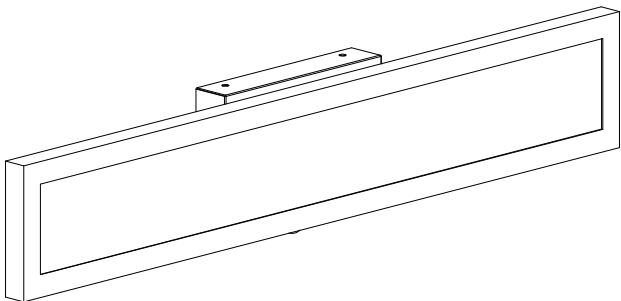


MYTH REALM

ITEM NUMBER: MRLVN-001

Please consult your electrician for hanging fixture and wiring.



The fixture is designed to dim with a standard Triac forward phase dimmer. Dimming levels will vary by dimmer. Below is a list of recommended dimmers:

- Lutron MACL-153M
- Lutron DVL-153P
- Lutron SCL-153P
- Leviton IPL06-10Z
- Leviton 6674-POW

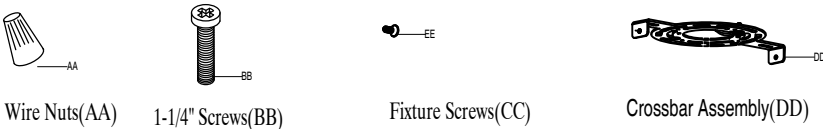
Due to inrush current, wattage should not exceed 150 Watts of product for a 600W dimmer.
WARNING: Wires need to be connected to driver found in canopy and should not be connected directly to power source or a short may occur.

3000K-4000K-5000K DIMMABLE

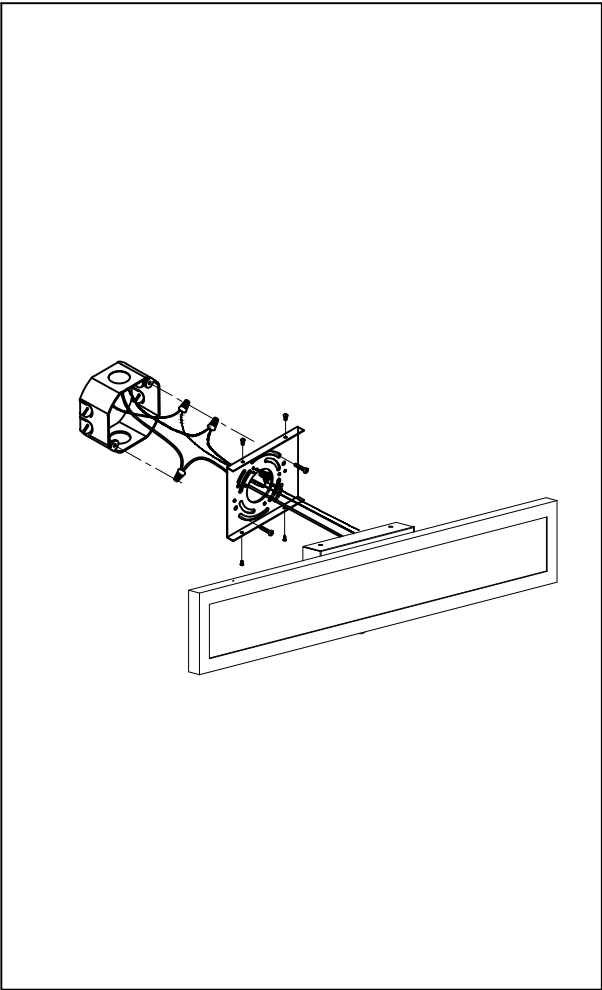
PRODUCTS ARE NOT INTENDED
 FOR COMMERCIAL USE.

MADE IN CHINA
 Page 1 of (2)

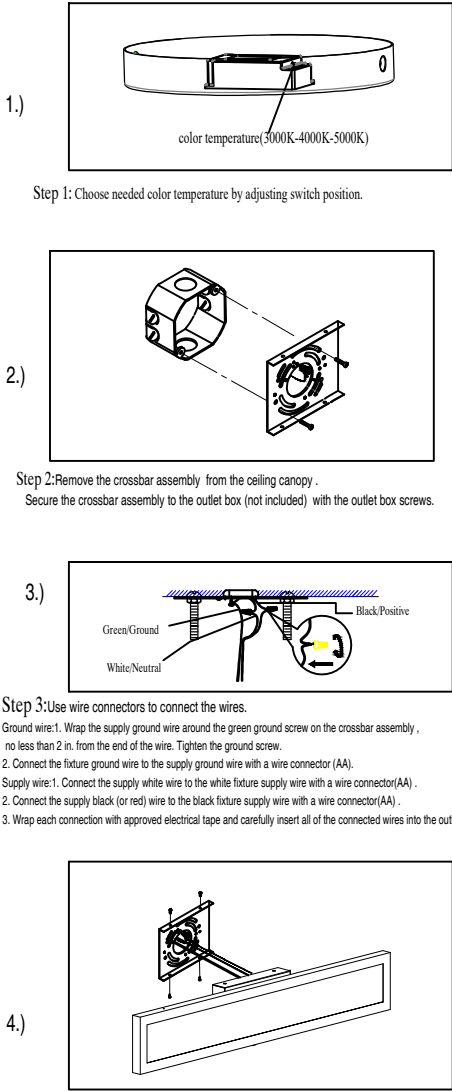
IMPORTANT: Turn off the power at the main fuse or circuit breaker box before starting installation



Locate all hardware & components before discarding packaging



Cleaning & Care:
 Clean with soft cloth and a mild detergent.
 Do not use abrasive cleaner.



Step 4: Assembling the fixture body to the outlet box. Line up the holes on the ceiling canopy and the mounting holes on the crossbar assembly (DD). Secure with the lock screws (CC). Tighten until snug.