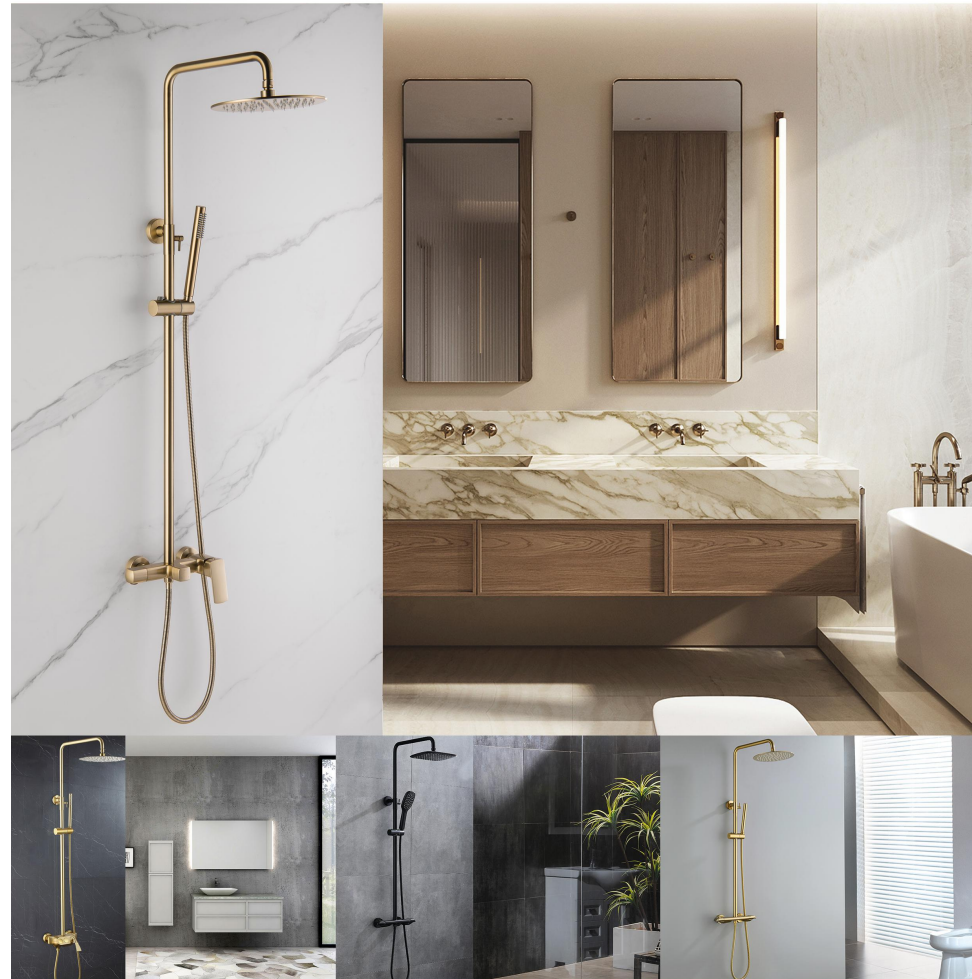


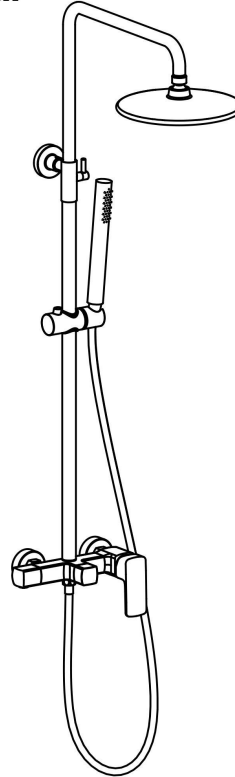
**AQUA
GALLERY**

User's Manual



INSTALLATION INSTRUCTIONS

Installation Manual



IAPMO RESEARCH AND TESTING, INC.
5001 East Philadelphia Street, Ontario, California 91761-2814 • USA • 909-473-4100 • 909-473-4244 • www.iapmotrt.com

ANSI **IAPMO** **UPC**

CERTIFICATE OF LISTING

IAPMO Research and Testing, Inc. is a professional testing organization that provides independent testing services to assist manufacturers in demonstrating compliance with applicable regulatory requirements. This certificate is issued only to products that have been tested and found to comply with the applicable regulatory requirements. This certificate is not a warranty, nor does it constitute an endorsement of the product or the manufacturer. For more information, please contact IAPMO Research and Testing, Inc. at the address above.

This certificate is not an endorsement of the product. For more information, please contact IAPMO Research and Testing, Inc. at the address above.

Product Listing Certificate No. 13127-2020-0000

Effective Date: December 2019 Rev: 1/28/2020 Valid Until: December 2024
Plate No. 13127

Product: **Flashing Shower Components**

Issued To: **Apex Shwing Co., Ltd.
Apex Shwing Co., Ltd.
International Department
Shanghai Street, SHANGHAI
China**

Identification: Products shall be marked with manufacturer's name or trademark, a part number, and listing file number in accessible locations only. The product shall also bear the UPC® certification mark. Markings shall be by means of either a permanent mark on the product, a label on the product or a tag attached to the product.

Characteristics: Products shall be constructed in accordance with applicable codes and standards for use in residential applications that consist of an shower pan, which may or may not have an open drain pan. Components are to be installed for use in accessible locations only. To be installed in accordance with the manufacturer's instructions, and the latest edition of the Uniform Plumbing Code and National Plumbing Code of Canada.

Reference: Listed on this certificate have been tested by an IAPMO R&T recognized laboratory. This recognition has been granted based upon the following information:

Tom Volting *Ron Chong*

This listing is based on the information provided by the manufacturer. IAPMO Research and Testing, Inc. is not responsible for any errors or omissions in this listing. The listing is subject to change without notice. The listing is not a warranty, nor does it constitute an endorsement of the product or the manufacturer. For more information, please contact IAPMO Research and Testing, Inc. at the address above.

IAPMO RESEARCH AND TESTING, INC.
5001 East Philadelphia Street, Ontario, California 91761-2814 • USA • 909-473-4100 • 909-473-4244 • www.iapmotrt.com

ANSI **IAPMO** **UPC**

CERTIFICATE OF LISTING

IAPMO Research and Testing, Inc. is a professional testing organization that provides independent testing services to assist manufacturers in demonstrating compliance with applicable regulatory requirements. This certificate is issued only to products that have been tested and found to comply with the applicable regulatory requirements. This certificate is not a warranty, nor does it constitute an endorsement of the product or the manufacturer. For more information, please contact IAPMO Research and Testing, Inc. at the address above.

This certificate is not an endorsement of the product. For more information, please contact IAPMO Research and Testing, Inc. at the address above.

Product Listing Certificate No. 13127-2020-0000

Effective Date: December 2019 Rev: 1/28/2020 Valid Until: December 2024
Plate No. 13127

Product: **Flashing Shower Fixtures**

Issued To: **Apex Shwing Co., Ltd.
Apex Shwing Co., Ltd.
International Department
Shanghai Street, SHANGHAI
China**

Identification: Flashing shower fixtures including deck and drain shall be marked with the manufacturer's registered name, trademark, or other mark or, in the case of private labeling, the name, trademark or other mark of the customer for whom the fixture was manufactured. The marking shall be accompanied by use of a permanent mark or by placing a permanent label on the fixture. Markings on private label fixtures shall be visible after installation.

Characteristics: Single-handle, single-control, and automatic compensating valve and shower valves shall have identifiable temperature control settings in which the settings are indicated by words "Hotter", "Warmer", "Cooler", etc.; by numbers, or graphically.

Reference: Listed on this certificate have been tested by an IAPMO R&T recognized laboratory. This recognition has been granted based upon the following information:

Tom Volting *Ron Chong*

This listing is based on the information provided by the manufacturer. IAPMO Research and Testing, Inc. is not responsible for any errors or omissions in this listing. The listing is subject to change without notice. The listing is not a warranty, nor does it constitute an endorsement of the product or the manufacturer. For more information, please contact IAPMO Research and Testing, Inc. at the address above.

IAPMO RESEARCH AND TESTING, INC.
5001 East Philadelphia Street, Ontario, California 91761-2814 • USA • 909-473-4100 • 909-473-4244 • www.iapmotrt.com

ANSI **IAPMO** **UPC**

CERTIFICATE OF LISTING

IAPMO Research and Testing, Inc. is a professional testing organization that provides independent testing services to assist manufacturers in demonstrating compliance with applicable regulatory requirements. This certificate is issued only to products that have been tested and found to comply with the applicable regulatory requirements. This certificate is not a warranty, nor does it constitute an endorsement of the product or the manufacturer. For more information, please contact IAPMO Research and Testing, Inc. at the address above.

This certificate is not an endorsement of the product. For more information, please contact IAPMO Research and Testing, Inc. at the address above.

Product Listing Certificate No. 13127-2020-0000

Effective Date: March 2019 Rev: 1/28/2020 Valid Until: March 2024
Plate No. 901939

Product: **Flashing Shower Fixtures - Components**

Issued To: **Single Handle Cartridge Technology Co., Ltd.
Shanghai Street, SHANGHAI
China**

Identification: Each fitting component shall be marked with the manufacturer's name or trademark, a part number, and listing file number in accessible locations only. The product shall also bear the UPC® certification mark. Markings shall be by means of either a permanent mark on the product, a label on the product or a tag attached to the product.

Characteristics: Flashing Shower fitting components to be installed in accordance with the manufacturer's instructions and the requirements of the latest edition of the Uniform Plumbing Code.

Reference: Listed on this certificate have been tested by an IAPMO R&T recognized laboratory. This recognition has been granted based upon the following information:

Tom Volting *Ron Chong*

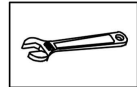
This listing is based on the information provided by the manufacturer. IAPMO Research and Testing, Inc. is not responsible for any errors or omissions in this listing. The listing is subject to change without notice. The listing is not a warranty, nor does it constitute an endorsement of the product or the manufacturer. For more information, please contact IAPMO Research and Testing, Inc. at the address above.

BEFORE INSTALLATION

► Notes before installation

1. Please check that all components are present.
2. Before installation ensure that all feed lines are clear of debris and on/off valve is present.
3. Pictures in the manual are general in content and may not represent exactly your purchased faucet.
If you are having difficulties please contact a professional plumber.
4. If you will be away from home for an extended period you should shut off the main water supply.

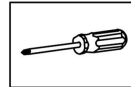
► Recommend Tools And Materials



Adjustable Wrench



Hexagon wrench

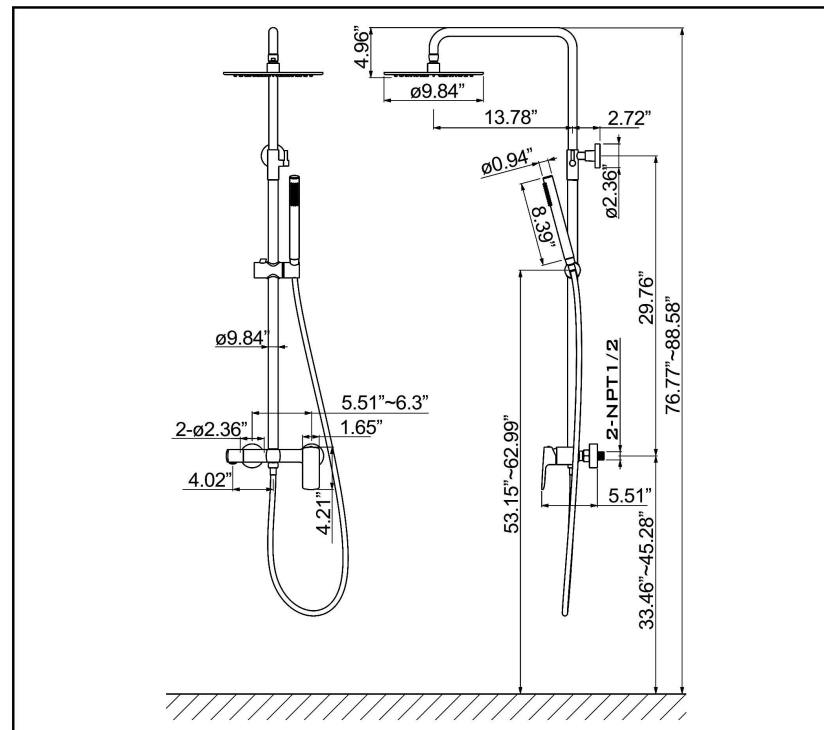


Philips Screwdriver



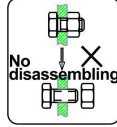
Pipe Tape

► Installation Dimension

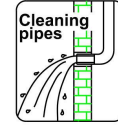


INSTALLATION STEPS

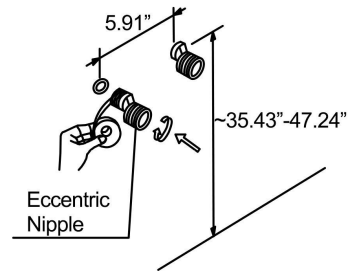
This product has been inspected and debugged by the factory to the best condition. Please do not disassemble and assemble it yourself.



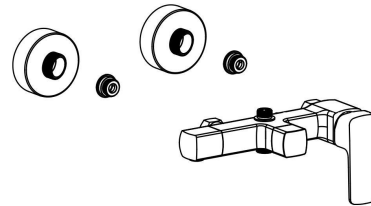
Before installing the product, please be sure to remove sundries and sludge from the water pipe to prevent sundries from blocking the product.



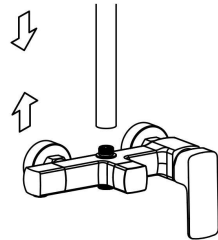
1. As shown, install the accessories and attach the tape.



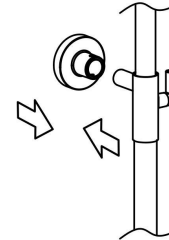
2. Install the main body and rubber pad.



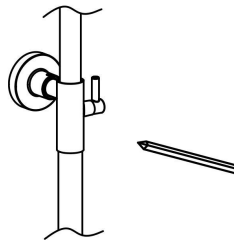
3. Install the riser on the faucet.



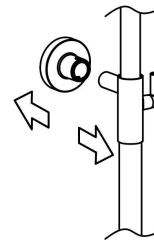
4. Install the mounting piece on the shower arm.



5. Make sure the riser is level, mark the position of the screw holes.

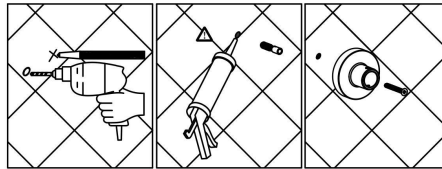


6. Remove the riser and the mounting piece.

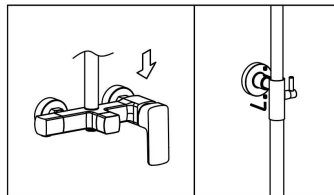


INSTALLATION STEPS

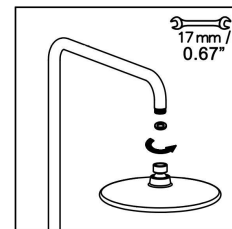
7. Drill the screw holes and install the anchors.
Install the mounting piece and mounting piece seal.



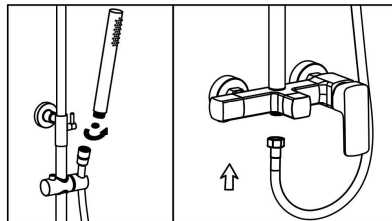
8. Install the riser on the faucet,
tighten the screw.



9. Install the shower rain head.



10. Place the hose washer in the short hose end connection. Connect this end of the hose to the faucet. Place the screen washer in the long hose end connection. Install the hand shower on this end of the hose. Rest the hand shower in the holder.



CLEANING CARE

In order to keep the appearance of product clean, bright and good performance, please take care of the product as follows;

1. Rinse with water only and dry with soft cotton cloth;
2. Use mild liquid and colorless glass cleaner to remove surface dirt and scale film, or use polish without abrasive effect;
3. Do not use abrasive detergent, polish, emery cloth, paper towel or scraper, etc;
4. Do not use acid cleaner, or cleaner and soap with insoluble gran etc;
5. In the process of use, mud may accumulate in the bubbler and make the water flow slow. The bubbler can be unscrewed, rinsed with water, and then installed back in place.



Please feel free to contact us if you have any questions. We will help to solve the issue together with you. OUR EMAIL: services@rbrohant.com



**AQUA
GALLERY**