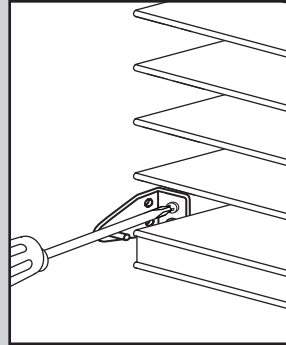


OPTIONAL: INSTALL HOLD DOWN BRACKETS

Use only if you wish to secure the blind to the bottom of the window.

1. Screw the hold down brackets (one on each side) to the bottom of the window or sill.
2. Insert the pins of the hold down brackets into the holes on the sides of the bottomrail end caps.



One Year Warranty

This warranty is provided to you _____ This warranty applies only to _____ products that meet the following conditions:

- (1) You are the original retail purchaser of the product;
 - (2) The product was properly installed in a residential dwelling, and;
 - (3) The product was made or assembled exclusively from _____ materials and components.
- WARRANTY:** _____ warrants the product against original defects in materials or workmanship for one year from the date of purchase. Our sole obligation under the warranty is to repair or replace defective products or components without charge. _____ is not responsible for transportation costs to or from the retailer or costs for measuring and installing the products. If repairs are made under this warranty, the repairs will be made with like or similar parts. Conditions or damages caused by accidents, alterations, misuse or failure to follow instructions for measurement, installation, cleaning or maintenance are excluded from the warranty. In addition, normal wear and tear is not covered by the warranty. **THIS WARRANTY IS EXCLUSIVE AND IN LIEU OF ALL OTHER WRITTEN OR ORAL WARRANTIES OR OBLIGATIONS AND LIABILITIES.** No person is authorized to extend or alter this warranty. **SHALL HAVE NO LIABILITY WHATSOEVER FOR INCIDENTAL OR CONSEQUENTIAL DAMAGES.** Some states do not allow the exclusion or limitation of incidental or consequential damages, so this limitation or exclusion may not apply to you. This warranty gives you specific legal rights, and you may also have other rights which vary from state to state. **SERVICE:** If you believe a product is defective, please return the product with your original sales receipt to the place of purchase. This store will arrange for inspection of the product and repair or replacement, if warranted, by _____ If you need further assistance regarding this warranty, you may write or call _____

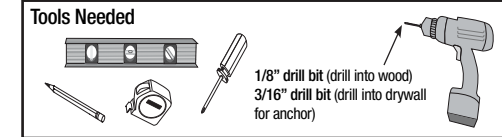
Questions? Let us help!

Please uninstall the blind and have the following information available for customer service:
 - blind's **item number** (located on the ends of the box)
 - blind's **sticker information** (located in the top headrail)
 Providing customer service with this information will help ensure faster service.

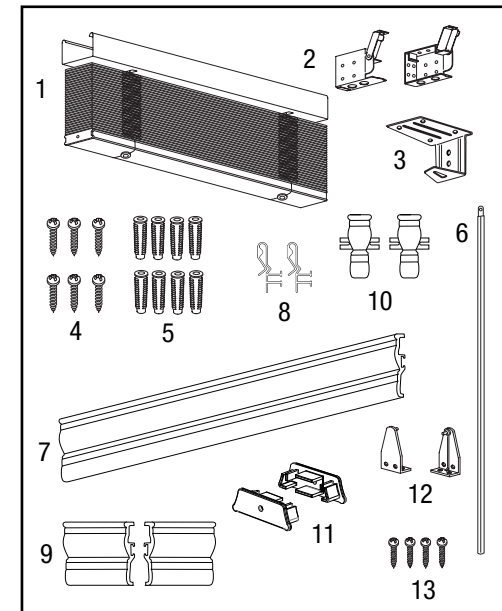
2 inch Cordless Faux Wood Blind

Instructions for Installation, Operation & Cleaning

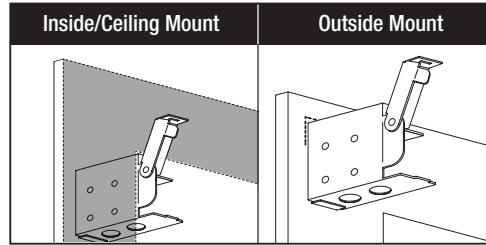
Congratulations on your _____ 2 inch cordless faux wood blind purchase! You can take pride and comfort in knowing that your new blind will be easy to install, will add to your home's beauty, and will perform to your expectations. Before beginning installation, please take a moment to review the following instructions and safety warnings.



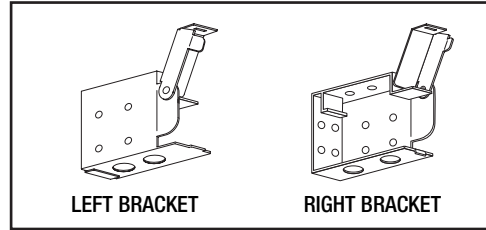
Items in the Box	Up to 48" Wide	Over 48" Wide
1 Faux Wood Blind	1	1
2 Corner Brackets	2	2
3 Center Support Brackets	0	1
4 Bracket Screws	4	6
5 Drywall Anchors	4	6
6 Wand	1	1
7 Valance	1	1
8 Valance Clips	2	2
9 Valance Returns	2	2
10 Valance Corners	2	2
11 Bottomrail End Caps	2	2
12 Hold Down Brackets	2	2
13 Hold Down Bracket Screws	4	4



1. Determine inside/ceiling or outside mount.



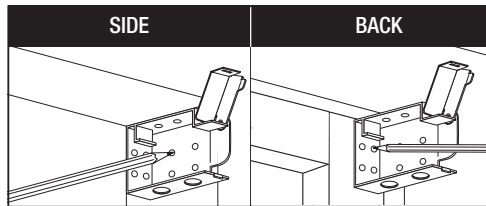
2. Identify the Left and Right brackets and open.



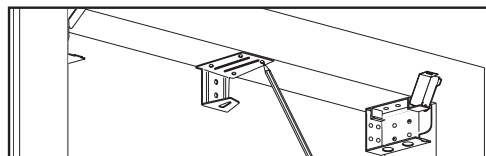
INSIDE MOUNT INSTRUCTIONS

3. **MOUNT BRACKETS:** When inside mounting, you can choose to mount through the side bracket wall (SIDE) or the back bracket wall (BACK).

A. Hold each bracket in the corner of window frame. Mark screw holes. NOTE: For flush valance mount, align the front of the mounting brackets 1" back from front of window frame.

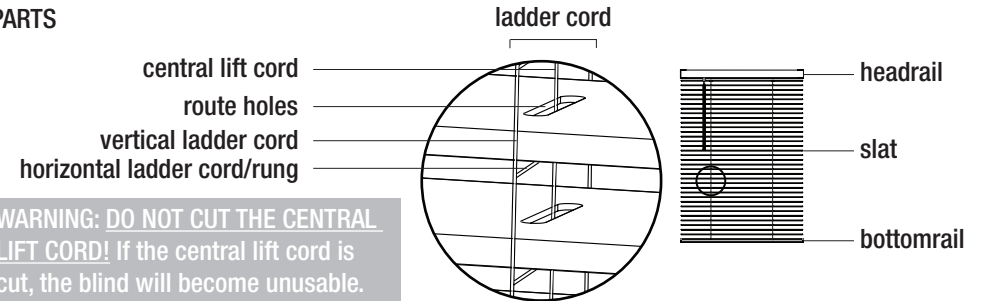


B. Center and mark center support bracket (for blinds 48" & wider).



PLEASE NOTE THAT BY SHORTENING YOUR BLIND, YOU ARE VOIDING THE WARRANTY.

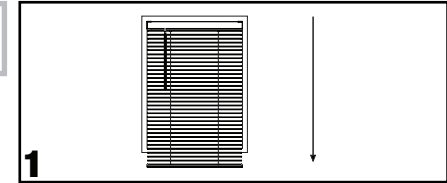
PARTS



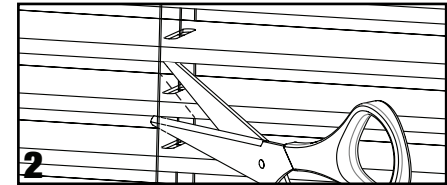
WARNING: DO NOT CUT THE CENTRAL LIFT CORD! If the central lift cord is cut, the blind will become unusable.

Tools needed: flat head screwdriver and scissors
Estimated time: 30 minutes

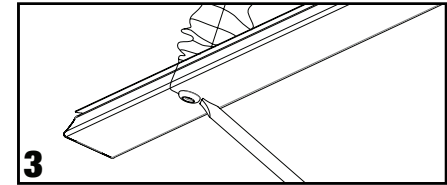
1. Fully lower the installed blind. Determine your desired blind length.



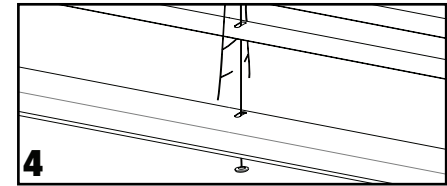
2. Start with the first slat below your desired length. Use scissors to carefully cut diagonally through each route hole. Make sure not to cut the central lift cord or the horizontal ladder cord under the slat. Repeat for all slats until you get to the bottomrail. Do not cut the bottomrail. Remove the cut slats.



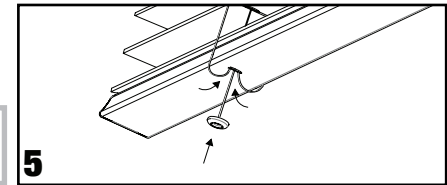
3. Use a flat head screwdriver to remove all plugs on the underside of the bottomrail. Note the plug is attached to the lift cord and should remain attached.



4. Cut all vertical ladder cords 2 1/2 rungs below the last slat. Then, cut all horizontal ladder cords EXCEPT for the rung below the last slat. To ensure a level bottomrail, make sure that the same amount of string is cut on each ladder cord. Do not cut the central lift cord. Remove excess ladder cord pieces.



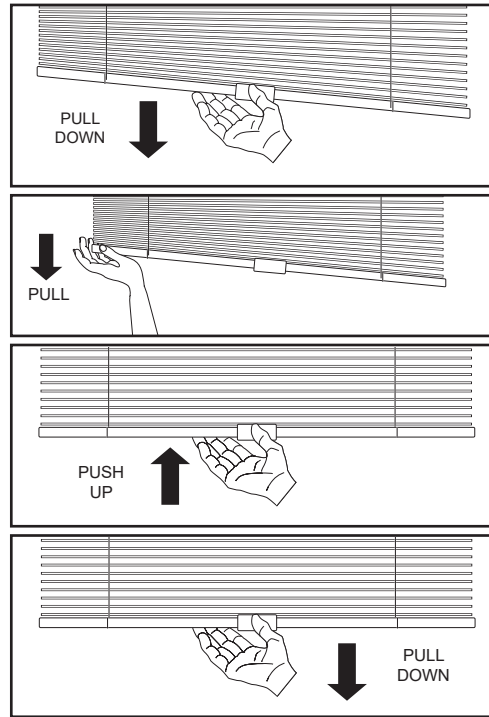
5. Insert the vertical ladder cord strings into the hole on the underside of the bottomrail and secure the plug back into place. Repeat for all plug locations.



TIP: If your blind creeps up, add weight to the bottom rail.

How to Correct an Uneven Bottomrail

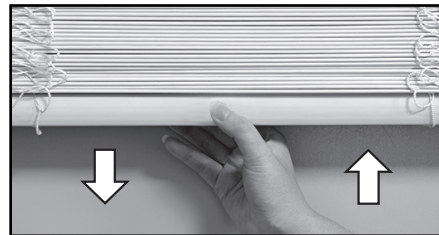
1. Fully extend the blind.
2. Pull down hard on the highest side of the bottomrail.
3. Push the bottomrail up to the headrail.
4. Fully extend the blind again.
5. Repeat steps until the bottomrail is level.



Operating Instructions

TO BRING BLIND DOWN TO WINDOW SILL:

Pull blind down to the window sill by pulling down on the bottom rail. Note: You may pull blind all the way down to the window sill or stop at any desired height.



TO FULLY OPEN BLIND:

Push blind up by pushing up on the bottom rail. Note: You may fully open blind to top of window or stop at any desired height.

TO TILT SLATS:

Twist wand left and right to open and close slats to your preference.



TO CLEAN BLIND:

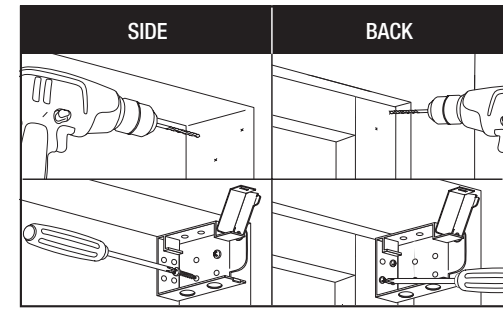
Dust gently with clean, damp non-abrasive cloth.

C. For drilling into wood:

Drill at each mark with the 1/8" drill bit. Screw brackets into place with screwdriver.

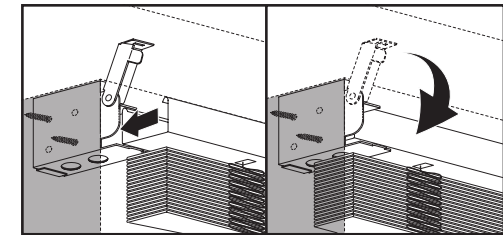
For drilling into drywall:

Drill a pilot hole at each mark with the 3/16" drill bit. Insert drywall anchors. Screw brackets into place with screwdriver.



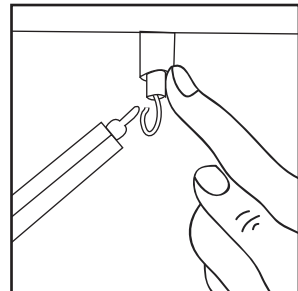
4. MOUNT HEADRAIL

Slide headrail into brackets. Close brackets.



5. INSTALL WAND

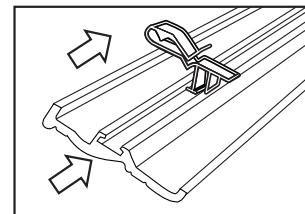
Hook the hole at the top of the wand, over the hook protruding from the front of the headrail.



6. INSTALL VALANCE

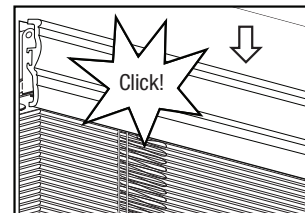
A. Slide valance clips into the channel on the back of the valance. Space evenly.

- TIP: Pinch the part of the clip that connects to the valance for easier installation.



B. Push the valance clips over the front lip of the blind headrail until they snap into place.

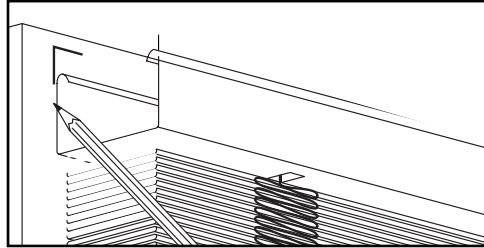
- TIP: Start at one end and work your way to the other to secure the valance.



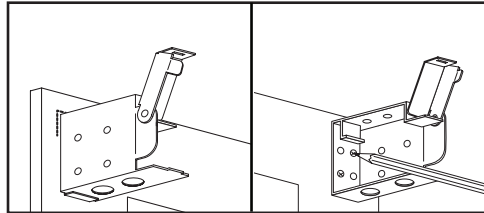
OUTSIDE MOUNT INSTRUCTIONS

3. MOUNT BRACKETS

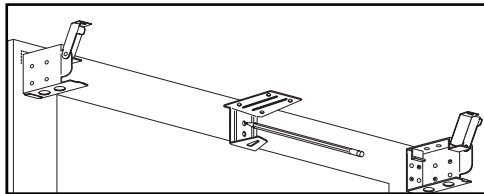
A. Center headrail over window and mark corner at both ends. Ensure that it is level.



B. Align brackets with marks made in step A. Mark screw holes.

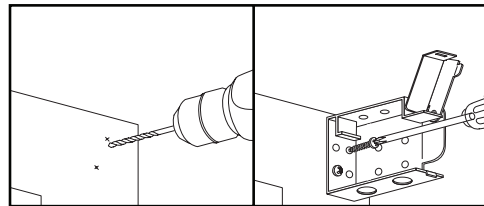


C. Center and mark center support bracket (for blinds 48" & wider).



D. For drilling into wood:

Drill at each mark with the 1/8" drill bit. Screw brackets into place with screwdriver.

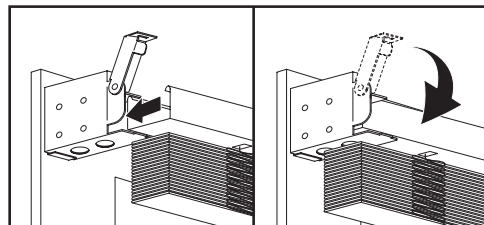


For drilling into drywall:

Drill a pilot hole at each mark with the 3/16" drill bit. Insert drywall anchors. Screw brackets into place with screwdriver.

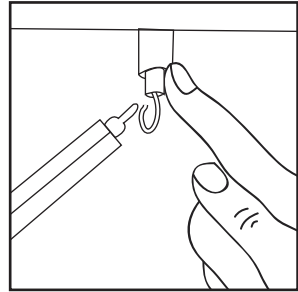
4. MOUNT HEADRAIL

Slide headrail into brackets. Close brackets.



5. INSTALL WAND

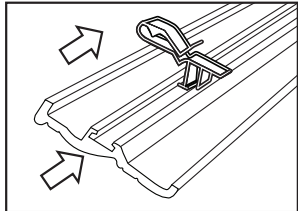
Hook the hole at the top of the wand, over the hook protruding from the front of the headrail.



6. INSTALL VALANCE

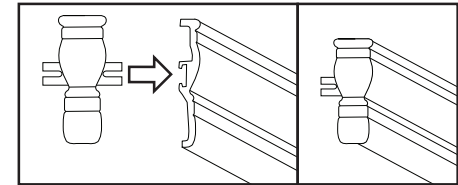
A. Slide valance clips into channel on the back of the valance. Space evenly.

- **TIP:** Pinch the part of the clip that connects to the valance for easier installation.

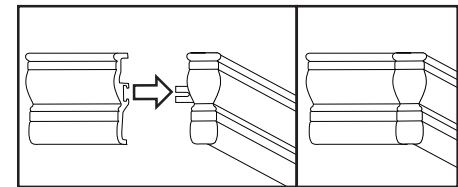


B. Slide valance corner into the channel on both ends of the back of the valance.

- **TIP:** Start at one end and work your way to the other to secure the valance.



C. Slide valance returns onto valance corners on both ends.



D. Push the valance clips over the front lip of the blind headrail until they snap into place.

