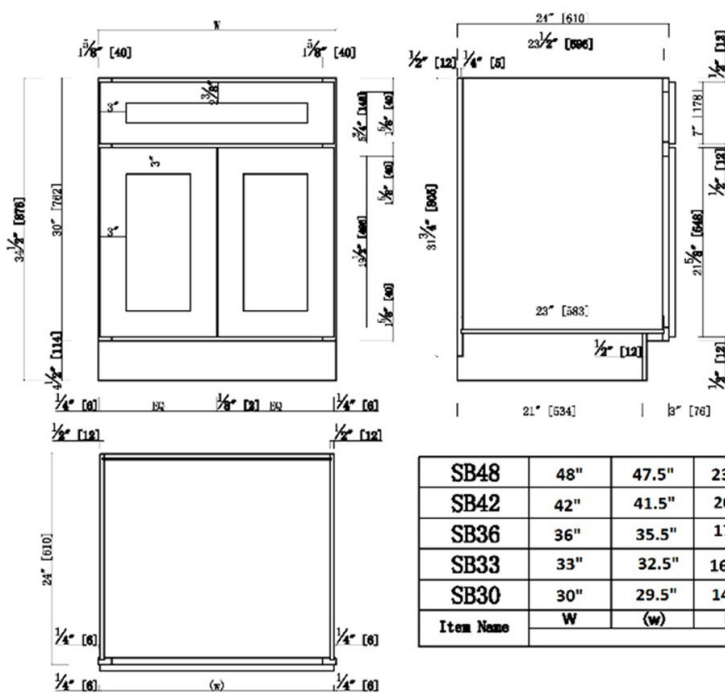


Brookings Unassembled Shaker Sink Base Kitchen Cabinet 36x34.5x24  
White



<b>SB48</b>	<b>48"</b>	<b>47.5"</b>	<b>23.75"</b>
<b>SB42</b>	<b>42"</b>	<b>41.5"</b>	<b>20.75</b>
<b>SB36</b>	<b>36"</b>	<b>35.5"</b>	<b>17.75"</b>
<b>SB33</b>	<b>33"</b>	<b>32.5"</b>	<b>16.25"</b>
<b>SB30</b>	<b>30"</b>	<b>29.5"</b>	<b>14.75"</b>
<b>Item Name</b>	<b>W</b>	<b>(w)</b>	<b>EQ</b>

## SPECIFICATIONS

MATERIAL CONSTRUCTION:	Wood
WOOD SPECIES:	Maple
ASSEMBLED DIMENSIONS:	34.5" H x 36" L x 24" D
ASSEMBLED WEIGHT:	59.12 lbs.
KITCHEN CABINET TYPE:	Base
MOUNTING TYPE:	Floor Mount
CONSTRUCTION TYPE:	Face Frame
HINGE STYLE:	Soft Close
DOOR STYLE:	2 HDF shaker doors

DRAWER DIMENSIONS 1:	N/A
DRAWER DIMENSIONS 2:	N/A
DRAWER DIMENSIONS 3:	N/A
DWR BOX MATERIAL:	N/A
DWR CONSTRUCTION:	N/A
DWR GLIDE:	N/A
FAKE DWR QTY:	1
FAKE DWR LOCATION:	Center

WARRANTY:	1-Year limited warranty
LEGAL FOR SALE IN CALIFORNIA:	Yes
CARB COMPLIANT:	CARB Phase 2
TSCA TITLE IV COMPLIANT:	Yes

NUMBER OF SHELVES:	0
SHELF STYLE:	N/A
ADJUSTIBLE SHELVES:	N/A
SHELF ADJUSTIBILITY INCREMENTS:	N/A
SHELF DIMENSIONS:	N/A
SHELF THICKNESS:	N/A
SHELF MATERIAL:	N/A
FACE FRAME MATERIAL:	Solid Maple
SIDES MATERIAL:	Plywood
BOTTOM MATERIAL:	Plywood
BACK PANEL MATERIAL:	Plywood
BACK BRACE MATERIAL:	Wood
TOE KICK INSET WIDTH:	3"
TOOLS NEEDED FOR INSTALLATION:	Phillips Screwdriver Mallet Wood Glue
FASTENER TYPE:	Wood Screw



TYPE:  
JOB:  
ORDER CODE:  
APPROVALS: