

LED Multi CCT Round Down Light Series

FEATURES

- Bridgelux LED chips
- In-line dimming
- IP rating of 20
- 5CCT selectable
- Easy installation and maintenance
- Corrosion and rust proof
- 50,000 hours lifetime

SUITABLE APPLICATIONS

- Kitchens
- Bedrooms
- Bathrooms
- Corridors



7" 12W



9" 17W



12" 21W



14.5" 25W

CONSTRUCTION:

Downlight body and endcaps are fabricated from aluminum for maximum rigidity. Lightweight aluminum heat sink designed to perform naturally convective cooling.

OPTICAL SYSTEM:

Bridgelux LED chips. General, medium, aisle distributions available to meet both horizontal and vertical light level requirements. Injection molded refractors for repeatable photometry.

WARRANTY:

3-year limited warranty. Actual performance may differ as a result of end-user environment and application.

ELECTRICAL:

Uses a 60°C-case temperature driver for maximum life at high temperatures. 0.90 power factor. Available as 120V input. -20°C to 40°C, -4°F to 104°F

INSTALLATION & MOUNTING:

Suitable for surface mount, spring clips or E26 base screw-in.

DIMMING:

Dimmable range from 10% to 100% with Lutron dimmer.

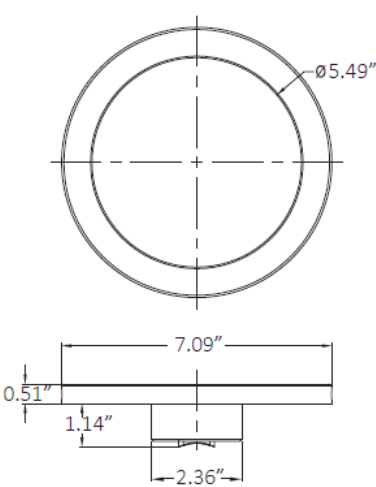


WATTAGE	LUMENS	EFFICACY	CRI	POWER FACTOR	REPLACES
12W	960LM	80LM/W	83	0.8	12W – 75W
17W	1,300LM	76.5LM/W	83	0.9	17W – 90W
21W	1,800LM	85.7LM/W	83	1.0	21W – 120W
25W	2,000LM	80LM/W	83	1.0	25W – 135W

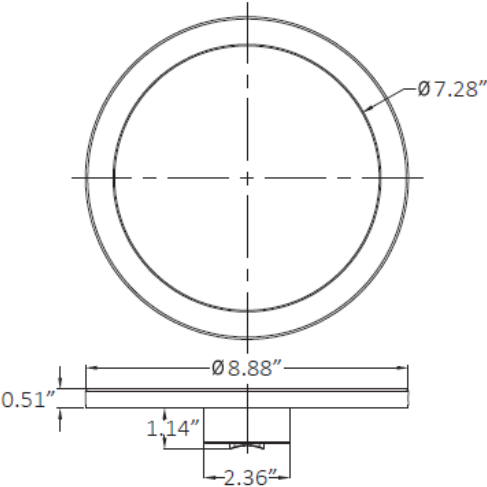
LED Multi CCT Round Down Light Series

Series	Size	Wattage	CCT Options
LOC-RDDL	ϕ 7.08" x 1.65"	12W	2,700K
	ϕ 8.87" x 1.65"	17W	3,000K
	ϕ 11.81" x 1.65"	21W	3,500K
	ϕ 14.56" x 1.68"	25W	4,000K
			5,000K

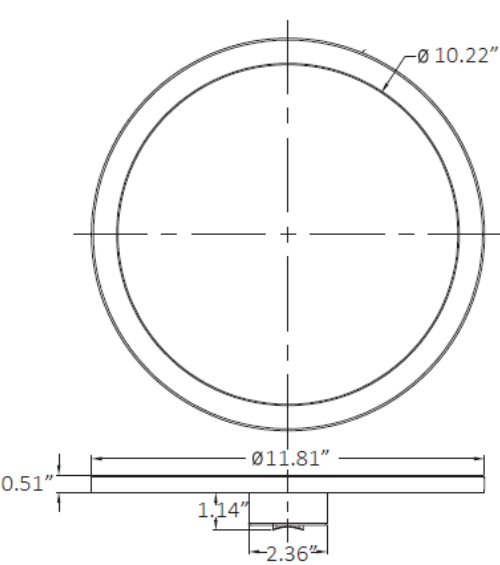
MEASUREMENTS



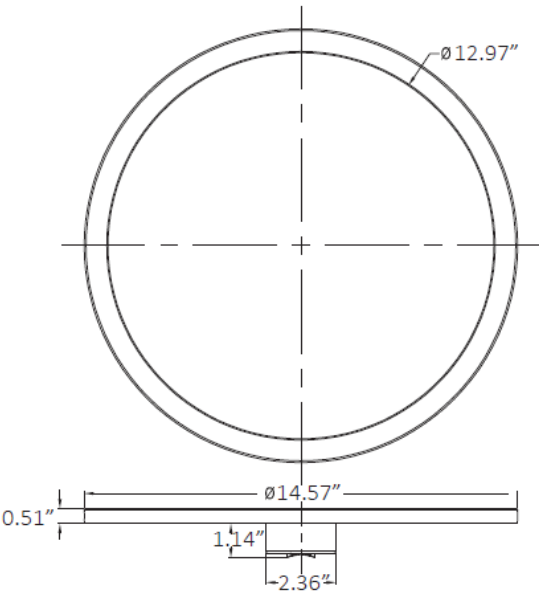
7" 12W



9" 17W



12" 21W

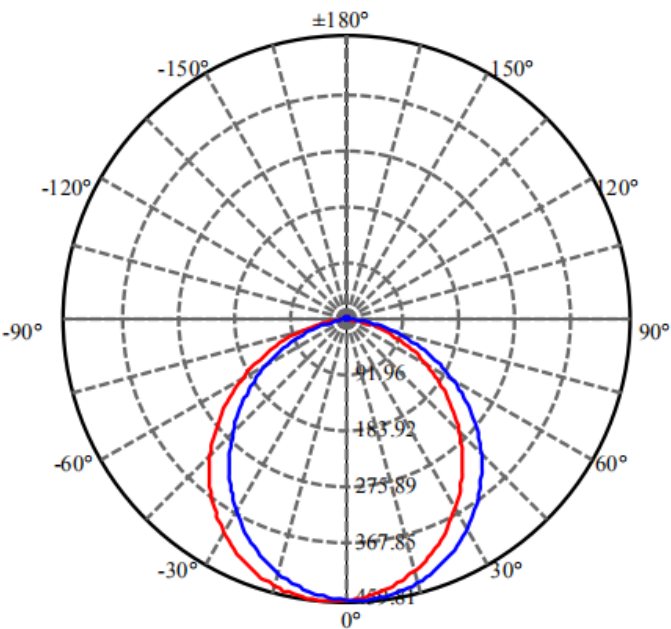


14.5" 25W

MODEL	QUANTITY	NET WEIGHT
LOC-7RDDL-12WMCCT	1	1.07 lbs
LOC-9RDDL-17WMCCT	1	1.55 lbs
LOC-12RDDL-21WMCCT	1	2.43 lbs
LOC-14.5RDDL-25WMCCT	1	3.64 lbs

PHOTOMETRIC DATA

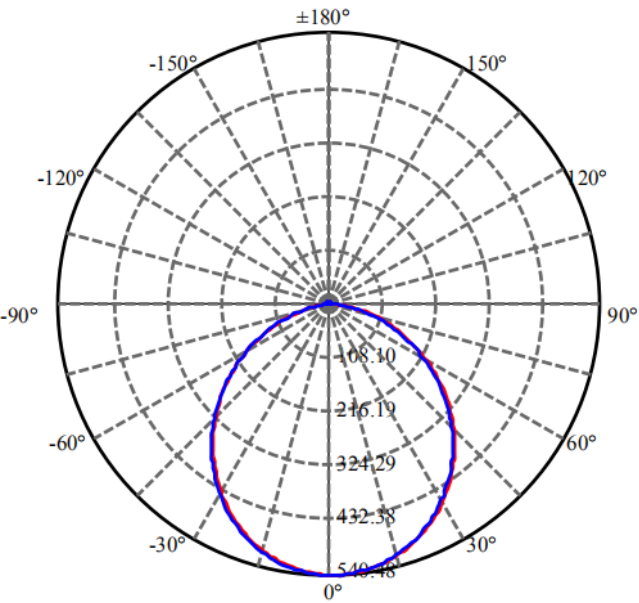
7" 12W



1.0m	457.5 , 154.2 lx	264.52cm
2.0m	114.4 , 38.5 lx	529.04cm
3.0m	50.8 , 17.1 lx	793.56cm
4.0m	28.6 , 9.6 lx	1058.09cm
5.0m	18.3 , 6.2 lx	1322.61cm
6.0m	12.7 , 4.3 lx	1587.13cm
7.0m	9.3 , 3.1 lx	1851.65cm
8.0m	7.1 , 2.4 lx	2116.17cm
9.0m	5.6 , 1.9 lx	2380.69cm
10.0m	4.6 , 1.5 lx	2645.22cm

Max , Ave Beam angle of C157.5 plane 105.82

9" 17W

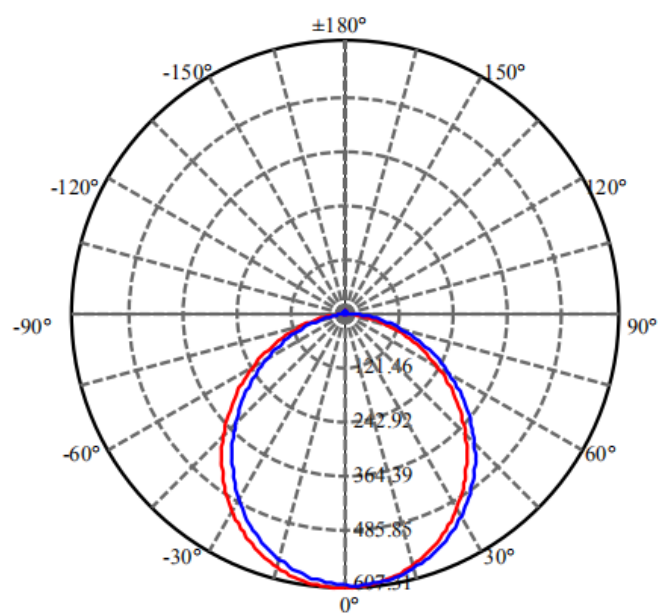


1.0m	540.5 , 179.6 lx	266.80cm
2.0m	135.1 , 44.9 lx	533.59cm
3.0m	60.1 , 20.0 lx	800.39cm
4.0m	33.8 , 11.2 lx	1067.19cm
5.0m	21.6 , 7.2 lx	1333.98cm
6.0m	15.0 , 5.0 lx	1600.78cm
7.0m	11.0 , 3.7 lx	1867.58cm
8.0m	8.4 , 2.8 lx	2134.37cm
9.0m	6.7 , 2.2 lx	2401.17cm
10.0m	5.4 , 1.8 lx	2667.97cm

Max , Ave Beam angle of C135 plane 106.29

PHOTOMETRIC DATA

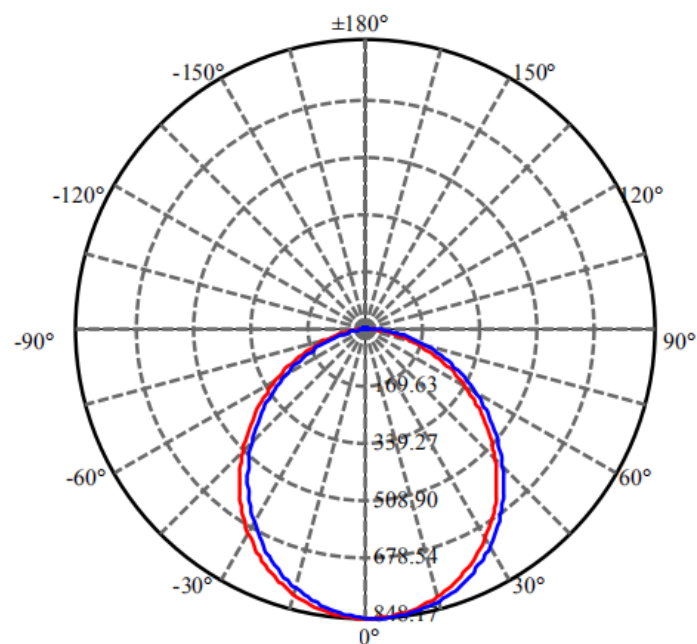
12" 21W



1.0m	607.2 , 200.7 lx	267.48cm
2.0m	151.8 , 50.2 lx	534.96cm
3.0m	67.5 , 22.3 lx	802.44cm
4.0m	38.0 , 12.5 lx	1069.92cm
5.0m	24.3 , 8.0 lx	1337.40cm
6.0m	16.9 , 5.6 lx	1604.88cm
7.0m	12.4 , 4.1 lx	1872.35cm
8.0m	9.5 , 3.1 lx	2139.83cm
9.0m	7.5 , 2.5 lx	2407.31cm
10.0m	6.1 , 2.0 lx	2674.79cm

Max , Ave Beam angle of C180 plane 106.43

14.5" 25W



1.0m	847.5 , 288.8 lx	261.11cm
2.0m	211.9 , 72.2 lx	522.21cm
3.0m	94.2 , 32.1 lx	783.32cm
4.0m	53.0 , 18.0 lx	1044.43cm
5.0m	33.9 , 11.6 lx	1305.54cm
6.0m	23.5 , 8.0 lx	1566.64cm
7.0m	17.3 , 5.9 lx	1827.75cm
8.0m	13.2 , 4.5 lx	2088.86cm
9.0m	10.5 , 3.6 lx	2349.96cm
10.0m	8.5 , 2.9 lx	2611.07cm

Max , Ave Beam angle of C90 plane 105.10