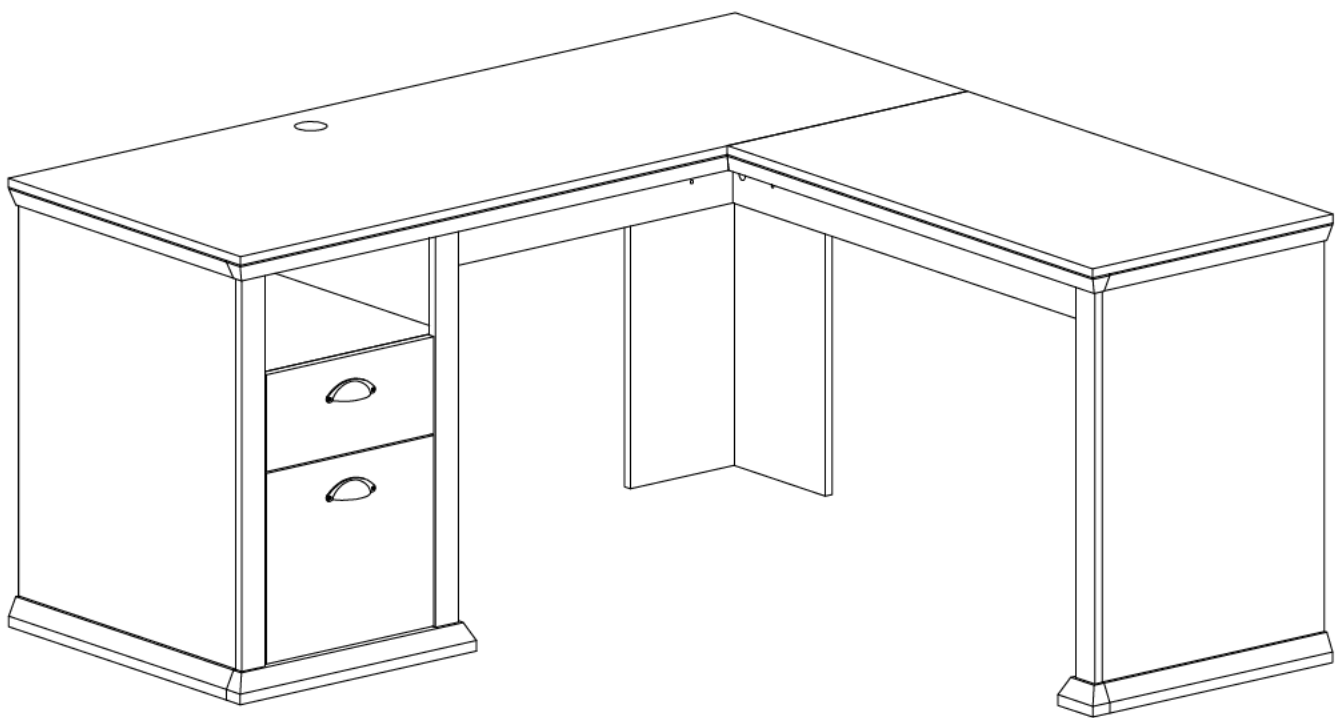


ASSEMBLY INSTRUCTIONS





WARNING

THIS PRODUCT IS DESIGNED AND INTENDED FOR USE WITH COMPUTER, FAX, AND PRINTER EQUIPMENT ONLY. IMPROPER LOADING WITH TELEVISION OR OTHER HEAVY EQUIPMENT COULD CAUSE INSTABILITY, TIP OVER, AND/OR SERIOUS INJURY.

ESTE PRODUCTO ESTA DISEÑADO SOLAMENTE PARA EL USO CON COMPUTADORS, FAXES, E IMPRESORAS. INAPROPIADO USO AL PONER TELEVISORES U OTRO EQUIPO PESADO PUEDE CAUSAR INESTABILIDAD, RODAMIENTO, Y/O HERIDA (GOLPES) SERIOS.

CE PRODUIT EST UNIQUEMENT CONÇU POUR UNE UTILISATION AVEC UN ORDINATEUR, UN TÉLÉCOPIEUR, OU UNE IMPRIMANTE. UN CHARGEMENT INCORRECT AVEC UNE TÉLÉVISION OU AUTRE MATÉRIEL LOURD PEUT LE RENDRE INSTABLE OU LE RENSER, ET PEUT VOUS CAUSER DES ENDOMMAGEMENTS SÉRIEUX.



WARNING

REMOVE ALL ITEMS FROM SHELVES BEFORE MOVING OR LIFTING.

RETIRE TODOS LOS ARTÍCULOS DE LOS ESTANTES ANTES DE MOVER O LEVANTAR OBJETOS.

RETIREZ TOUS LES ÉLÉMENTS ÉTAGÈRES AVANT DE SE DÉPLACER OU DE LEVAGE



WARNING

DO NOT LOAD UNIT WITHOUT PROPERLY ATTACHING BACK PANEL. DOING SO COULD CAUSE INSTABILITY, PRODUCT COLLAPSE, AND/OR SERIOUS INJURY.

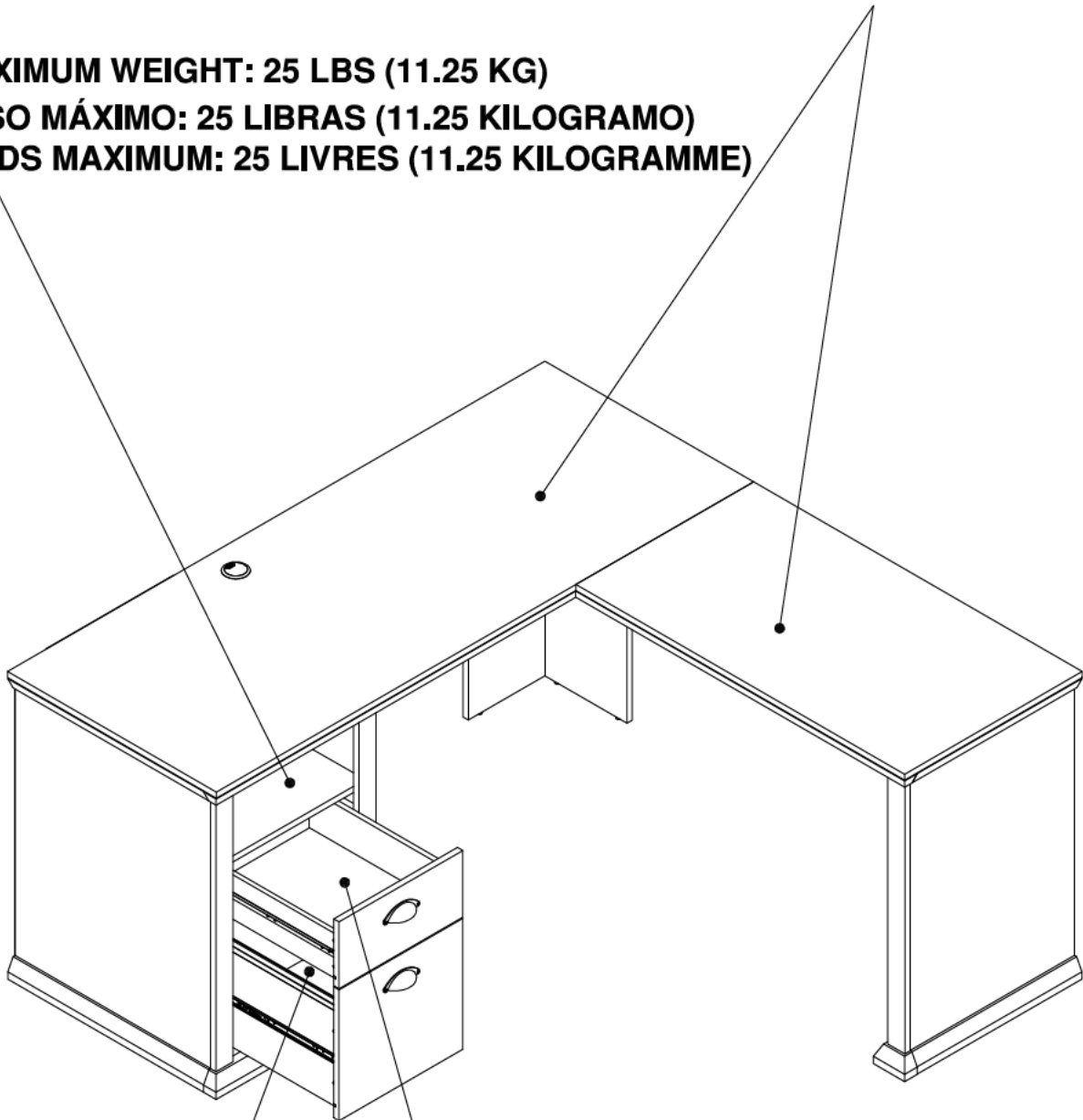
NO CARGUE ESTA UNIDAD SIN EL PANEL DE ATRÁS. HACERLO PUEDE CAUSAR INESTABILIDAD, QUE EL PRODUCTO SE DERRUMBE, Y/O HERIDAS (GOLPES) SERIAS.

NE PAS CHARGER LE PRODUIT SANS ATTACHER CORRECTEMENT LE PANNEAU ARRIÈRE. FAIRE AINSI PEUT CAUSER L'INSTABILITÉ OU L'EFFONDREMENT DU PRODUIT ET PEUT VOUS CAUSER DES ENDOMMAGEMENTS SÉRIEUX.

MAXIMUM RECOMMENDED WEIGHT LOADS

MAXIMUM WEIGHT: 200 LBS (90.9 KG)
PESO MÁXIMO: 200 LIBRAS (90.9 KILOGRAMO)
POIDS MAXIMUM: 200 LIVRES (90.9 KILOGRAMME)

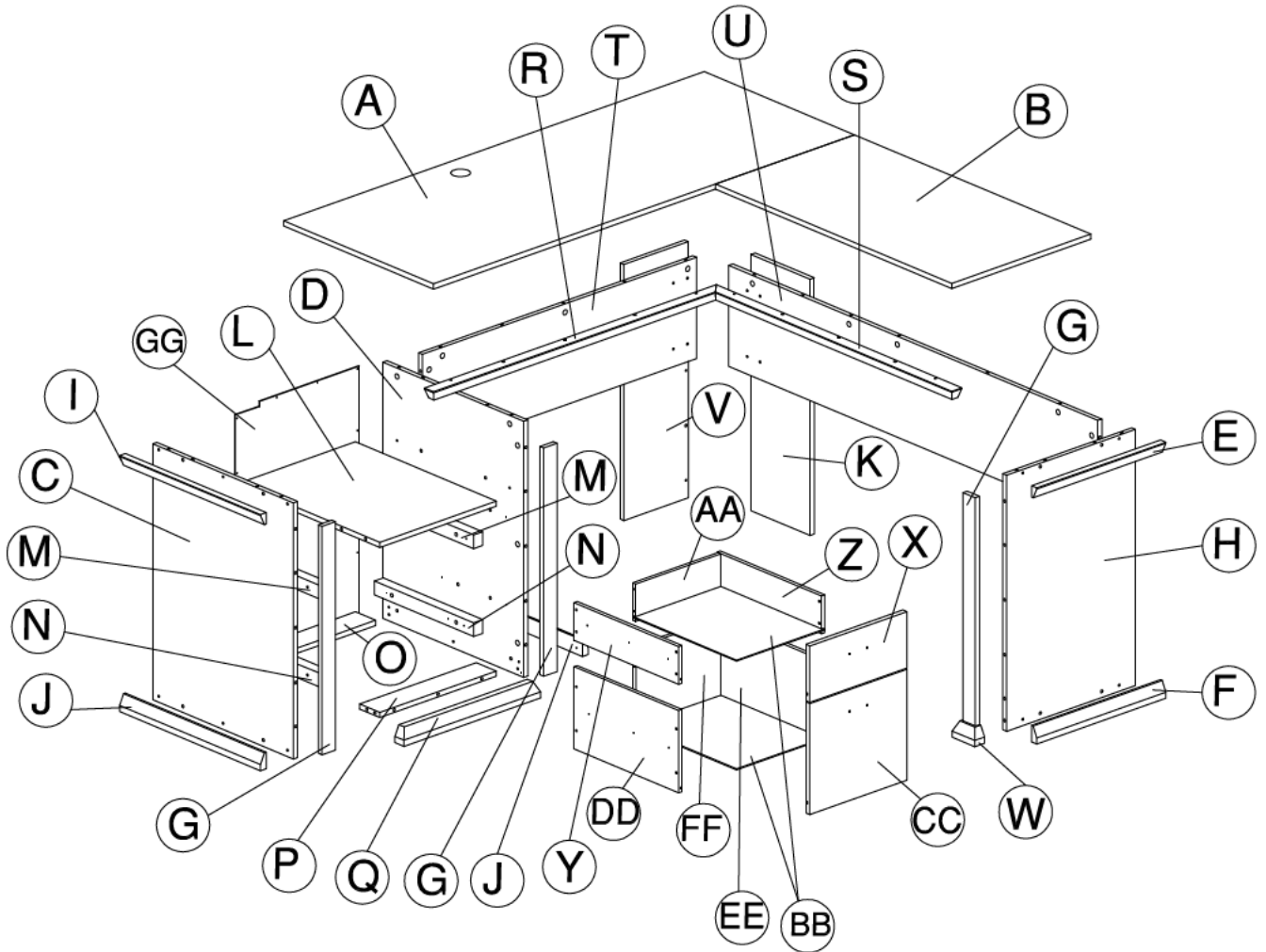
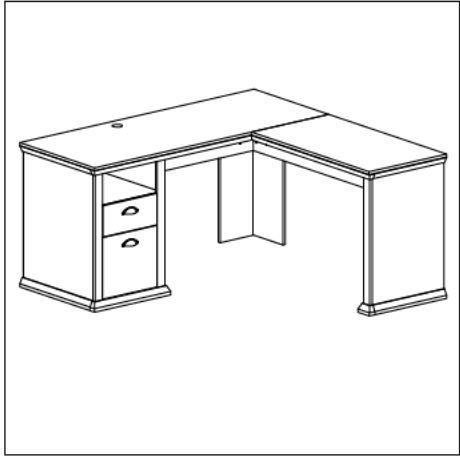
MAXIMUM WEIGHT: 25 LBS (11.25 KG)
PESO MÁXIMO: 25 LIBRAS (11.25 KILOGRAMO)
POIDS MAXIMUM: 25 LIVRES (11.25 KILOGRAMME)



MAXIMUM WEIGHT: 10 LBS (4.5 KG)
PESO MÁXIMO: 10 LIBRAS (4.5 KILOGRAMO)
POIDS MAXIMUM: 10 LIVRES (4.5 KILOGRAMME)

MAXIMUM WEIGHT: 25 LBS (11.25 KG)
PESO MÁXIMO: 25 LIBRAS (11.25 KILOGRAMO)
POIDS MAXIMUM: 25 LIVRES (11.25 KILOGRAMME)

EXPLODED VIEW



MODEL WC40330

A [1]	W175129	N [2]	W175139	AA [1]	W175151
B [1]	W175130	O [1]	W175140	BB [2]	W175152
C [1]	W175131	P [1]	W175141	CC [1]	W175153
D [1]	W175132	Q [1]	W175142	DD [1]	W175154
E [1]	W175099	R [1]	W175143	EE [1]	W175155
F [1]	W175100	S [1]	W175144	FF [1]	W175156
G [3]	W175101	T [1]	W175145	GG [1]	W175157
H [1]	W175133	U [1]	W175146		
I [1]	W175134	V [1]	W175147		
J [2]	W175135	W [1]	W175117		
K [1]	W175136	X [1]	W175148		
L [1]	W175137	Y [1]	W180552		
M [2]	W180551	Z [1]	W180553		

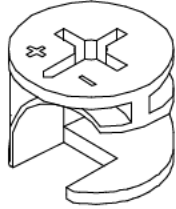
FASTENERS

Fasteners are shown in actual size.

Los fijadores son demostrados en su tamaño actual.

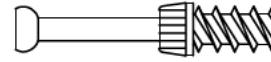
Les attaches sont montrées dans l'échelle grandeur.

H159916



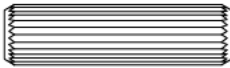
Quantity
40

H159917



Quantity
40

H38169



Quantity
41

8 x 30MM

H158986



Quantity
14

8 x 20MM

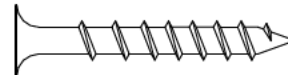
H127839



Quantity
4

M4 x 22MM

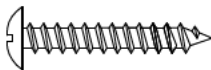
H23198



Quantity
22

#10 x 1-1/2"

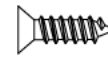
H150019



Quantity
21

#8 x 1"

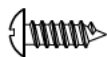
H170713



Quantity
12

#6 x 1/2"

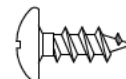
H101725



Quantity
26

#6 x 1/2"

H35251



Quantity
8

#10 x 1/2"

FASTENERS

Fasteners are shown in actual size.

Los fijadores son demostrados en su tamaño actual.

Les attaches sont montrées dans l'échelle grandeur.

H175158

Quantity
8



#12 x 15MM

H34174

Quantity
16

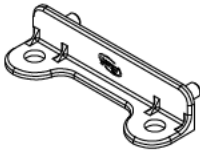


3 x 3/4"

HARDWARE

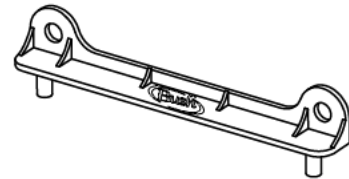
H100445

Quantity
2



H100446

Quantity
2



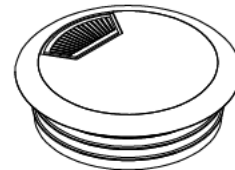
H175082

Quantity
2



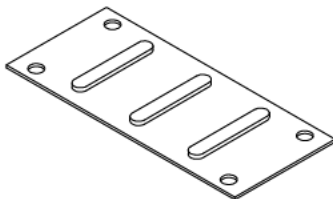
H170591

Quantity
1



H39922

Quantity
2



H175127

Quantity
24



HARDWARE

Z89898

Quantity
1



16" (406mm)

Z89899

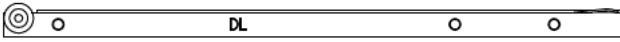
Quantity
1



16" (406mm)

Z89900

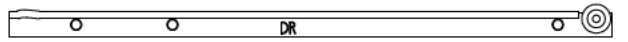
Quantity
1



16" (406mm)

Z89901

Quantity
1



16" (406mm)

H175081

Quantity
2



16" (406mm)

H20385

Quantity
9



H174447

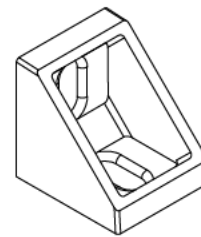
Quantity
2



400MM

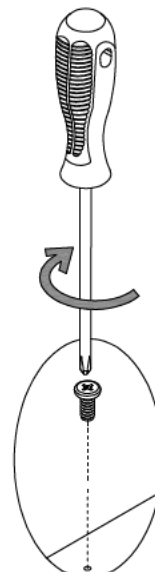
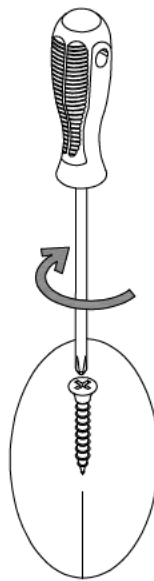
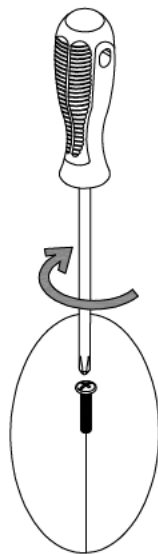
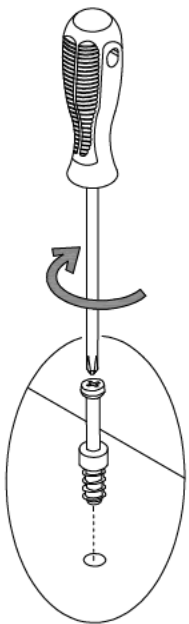
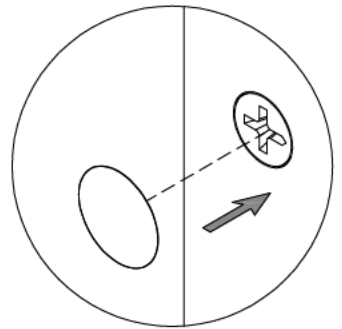
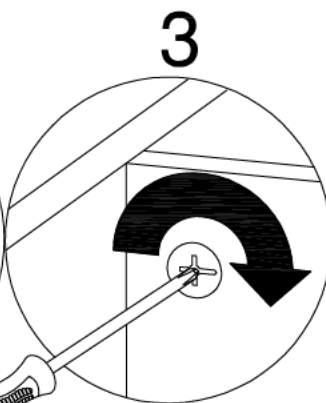
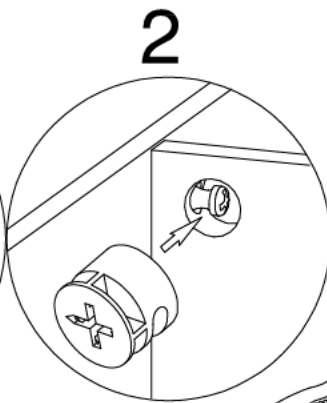
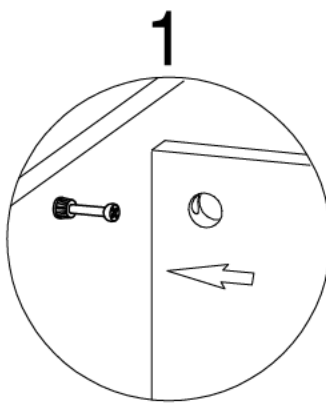
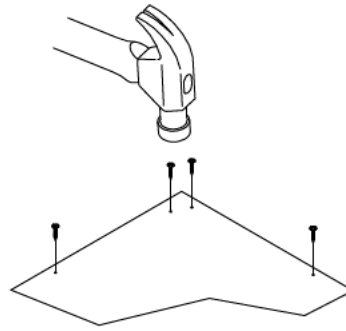
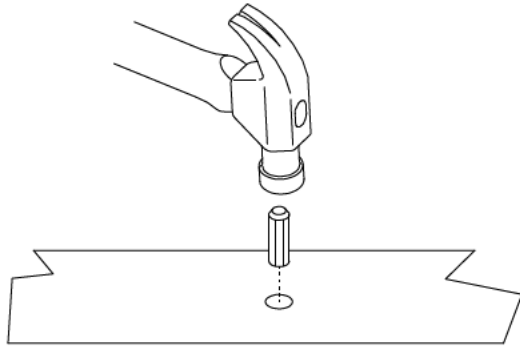
H137197

Quantity
3



ATTENTION

Common assembly techniques.
Técnica común de ensamblaje.
Techniques communes d'assemblage.



ATTENTION

Common assembly techniques.
Técnica común de ensamblaje.
Techniques communes d'assemblage.

Move lock lever on the runner as shown to separate runner from mount and cage.

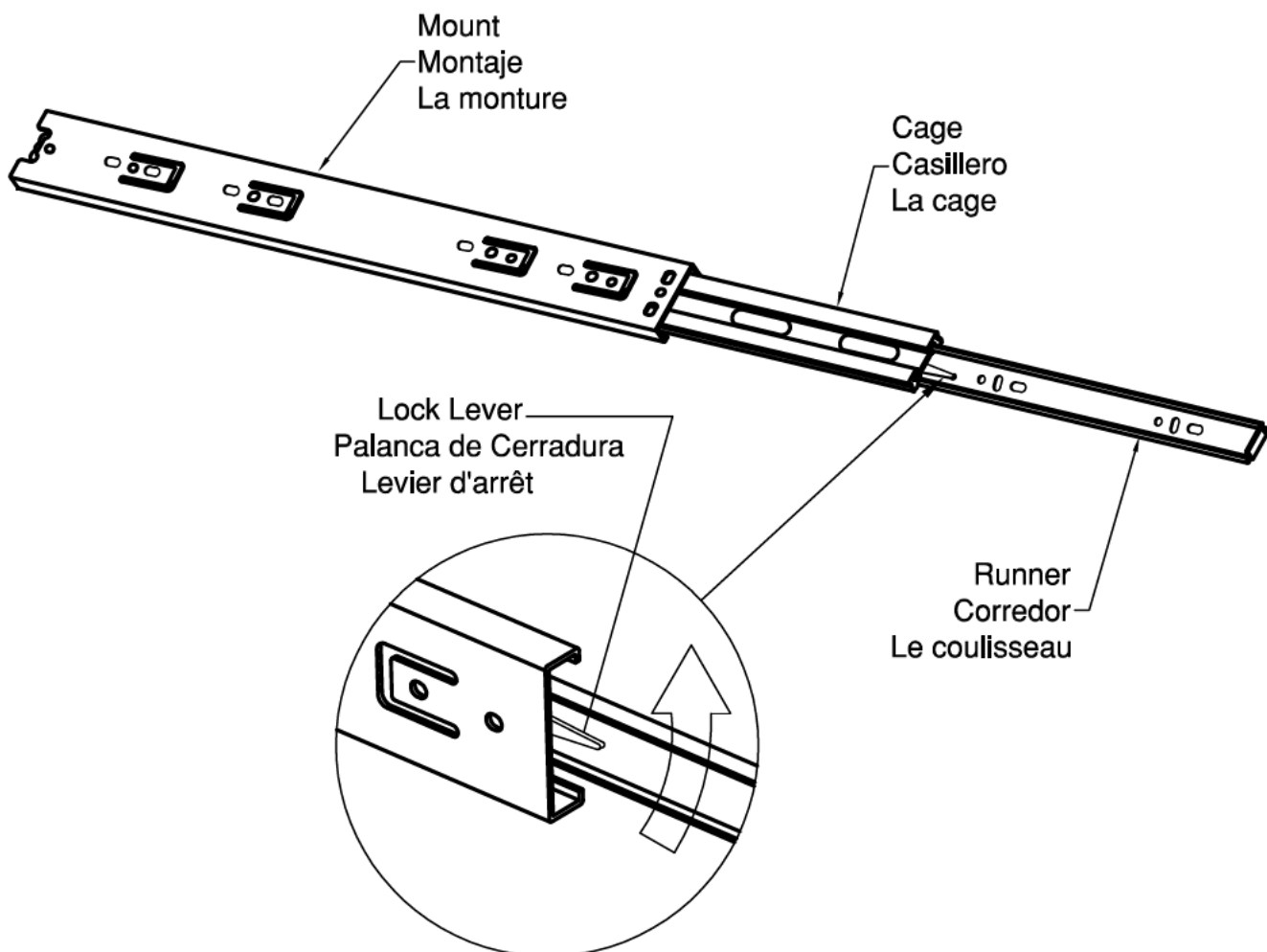
Mueva la palanca de seguro en el corredor del montaje y el casillero como se muestra.

Déplacez le levier de verrouillage sur le coulisseau comme illustré pour séparer le coulisseau de la monture et la cage.

Set runner aside to be used later in the Assembly Instructions.

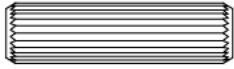
Haga el corredor hacia un lado porque sera utilizado mas adelante.

Mettez le coulisseau de côté pour être utilisé plus tard dans les instructions d'assemblage.

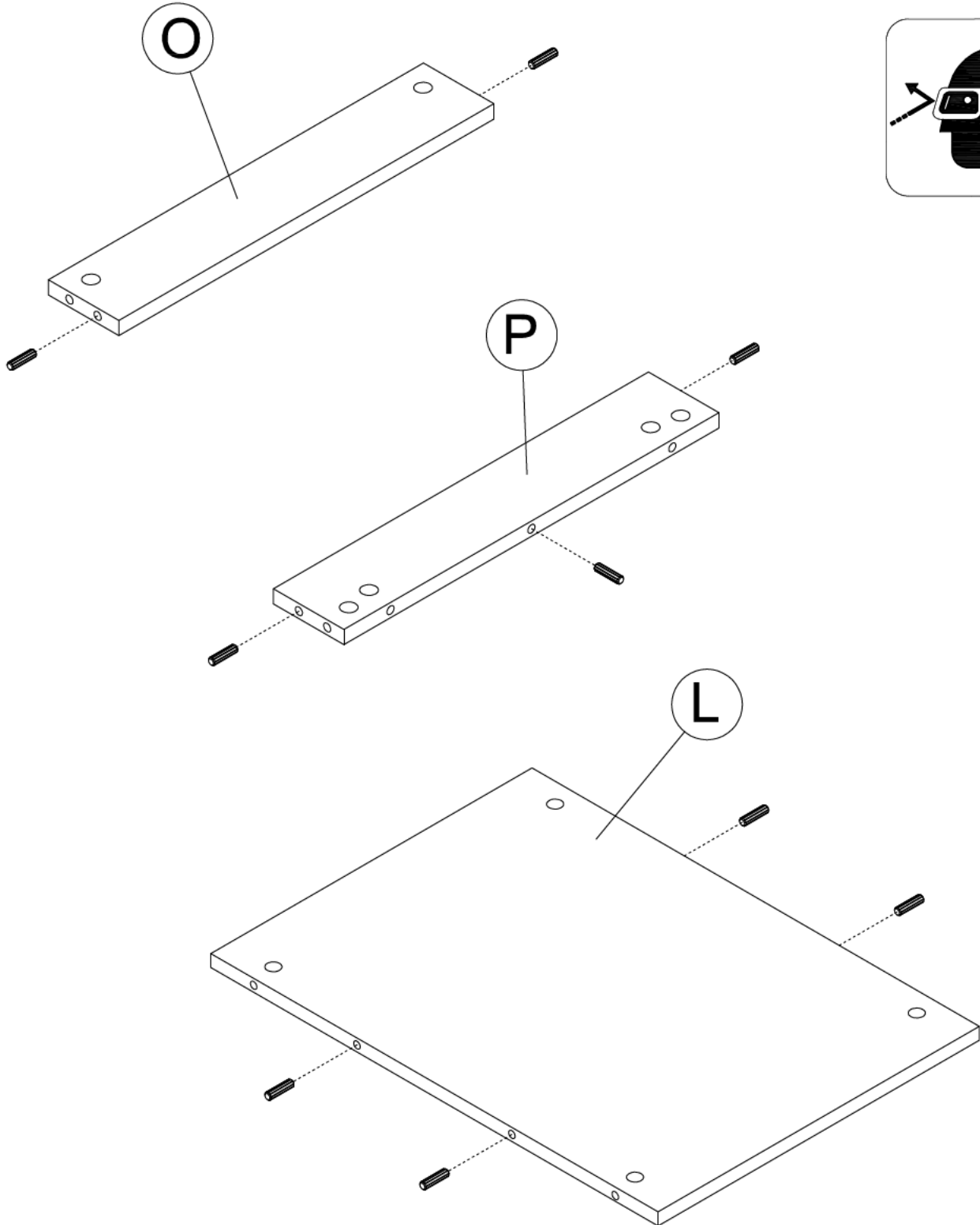


STEP 1

H38169

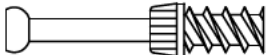


[9]

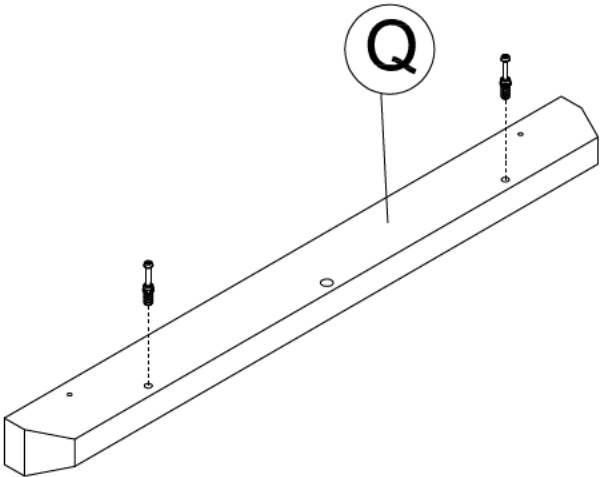
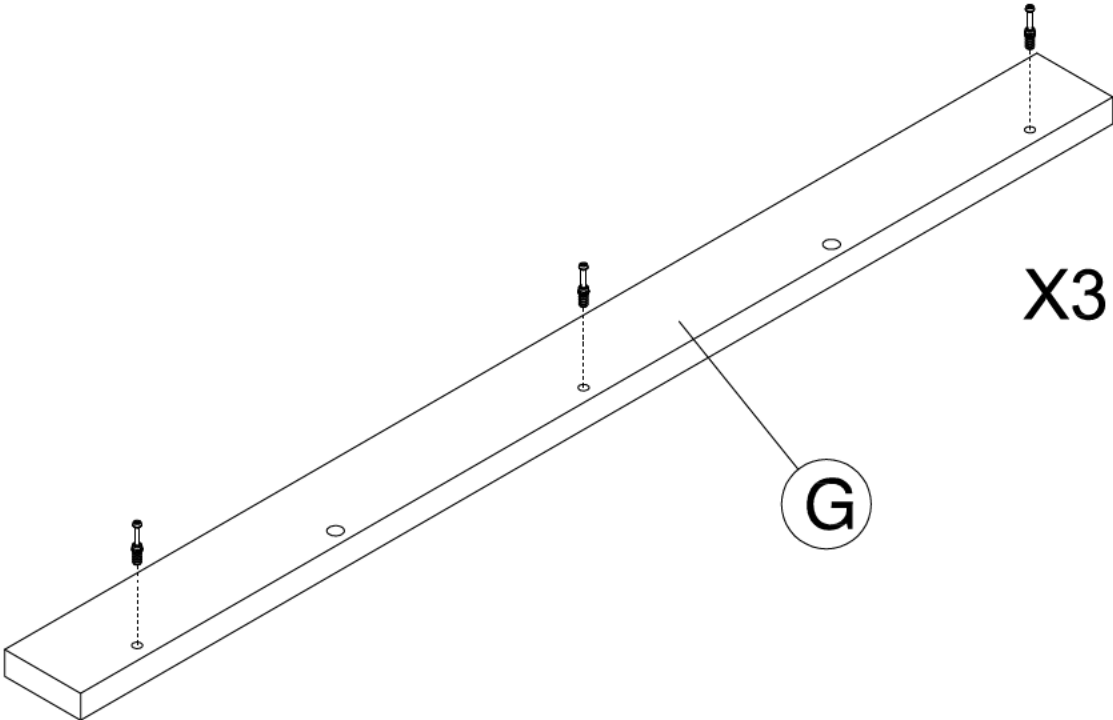


STEP 2

H159917



[11]



STEP 3

H159917

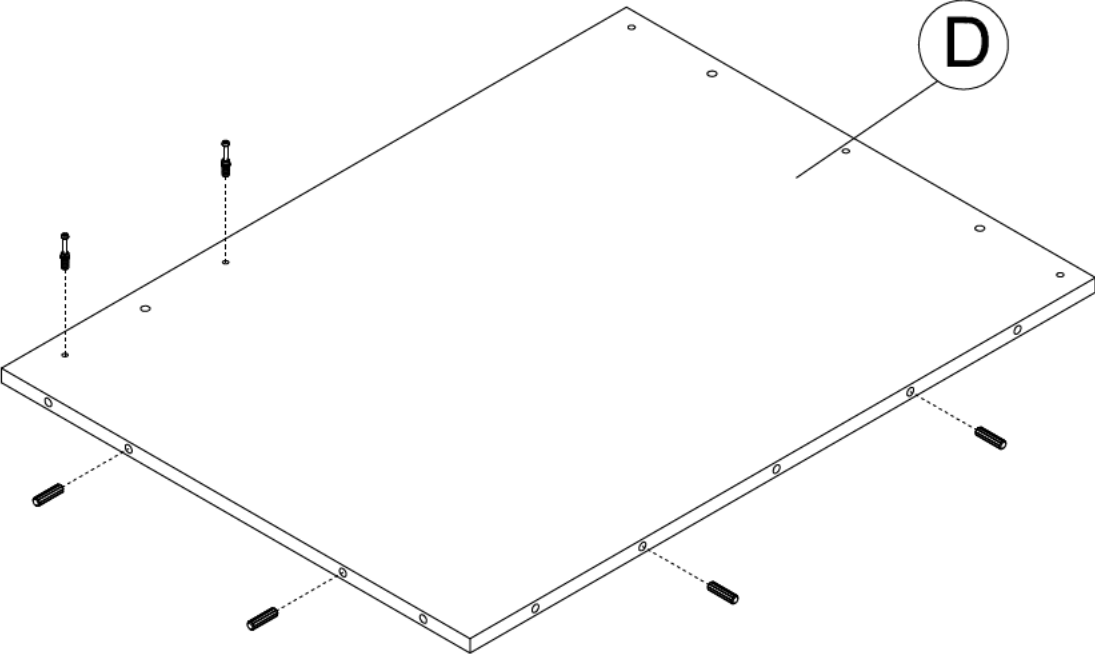
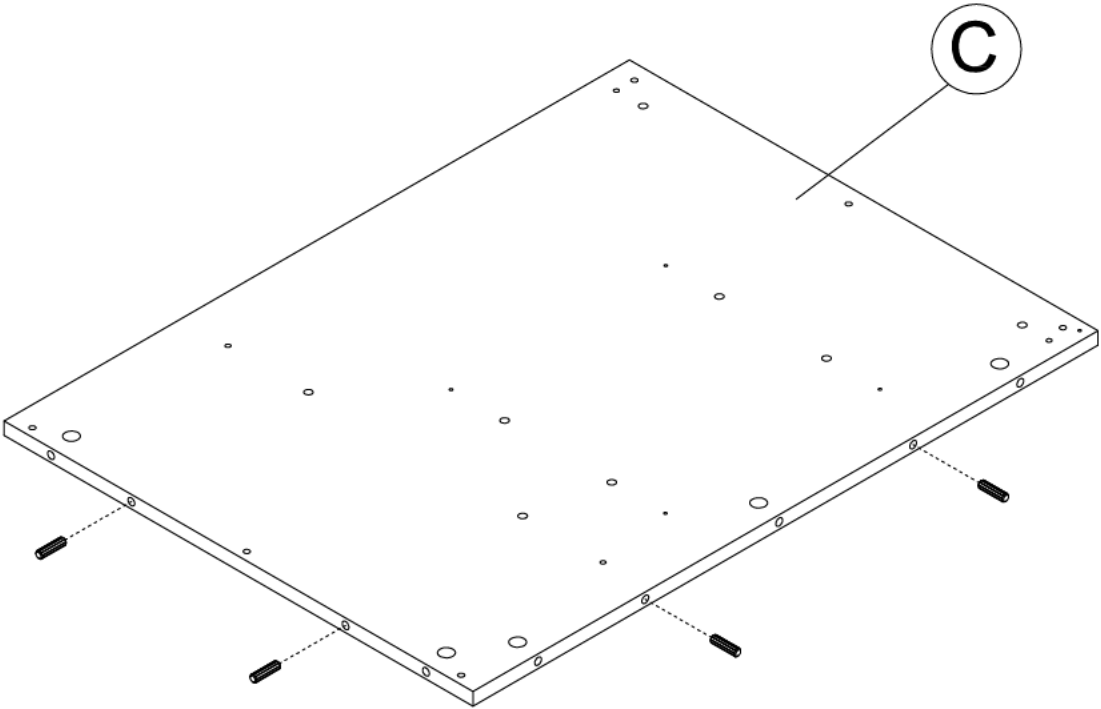
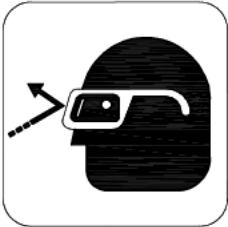


[2]

H38169



[8]



STEP 4

H150019

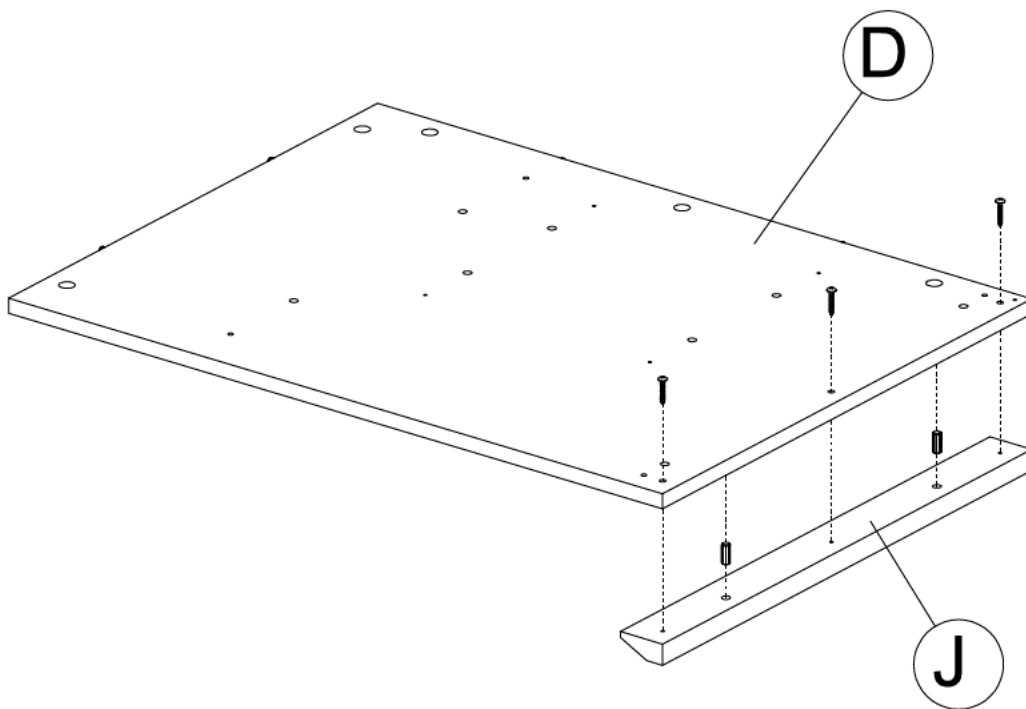
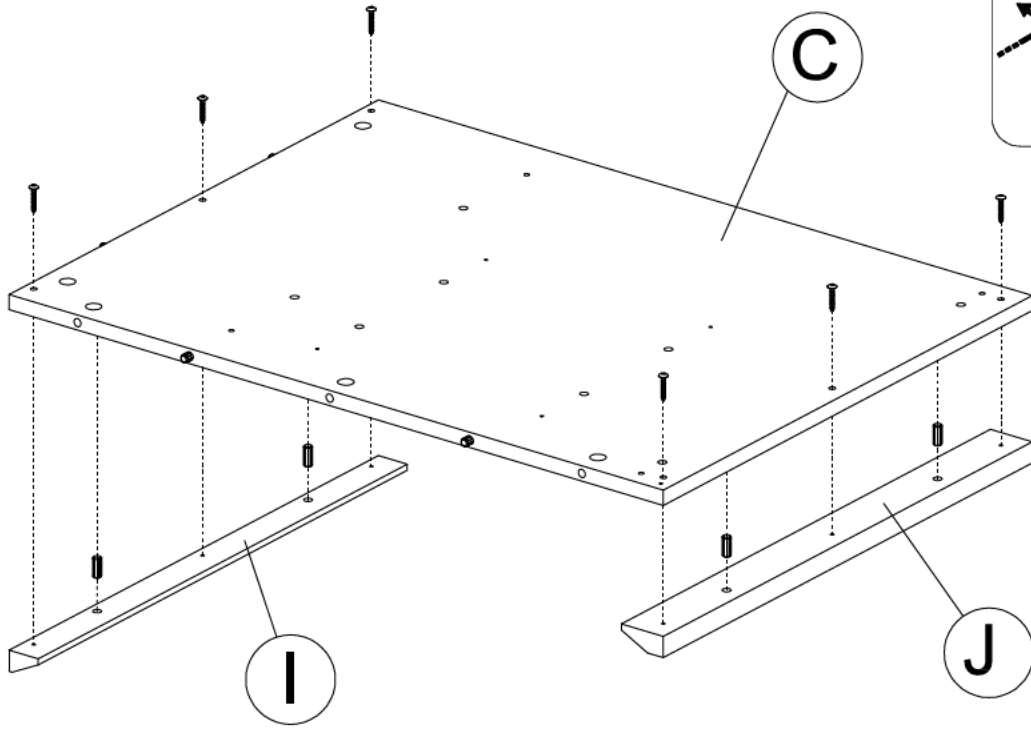


[9]

H158986

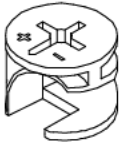


[6]



STEP 5

H159916

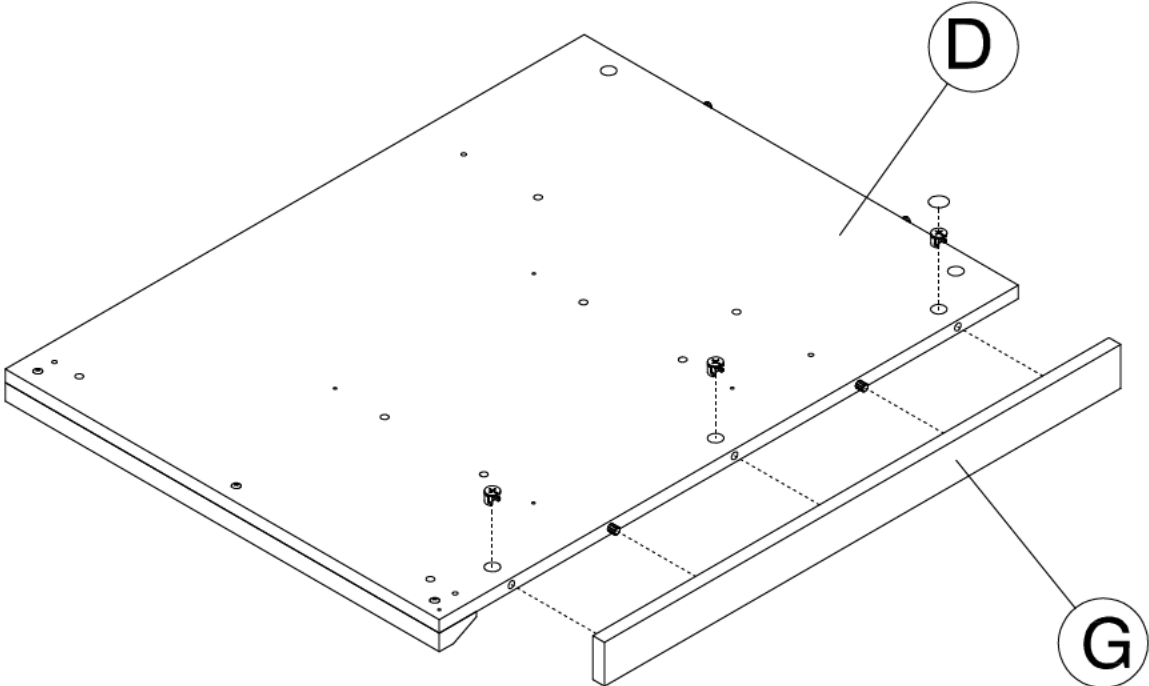
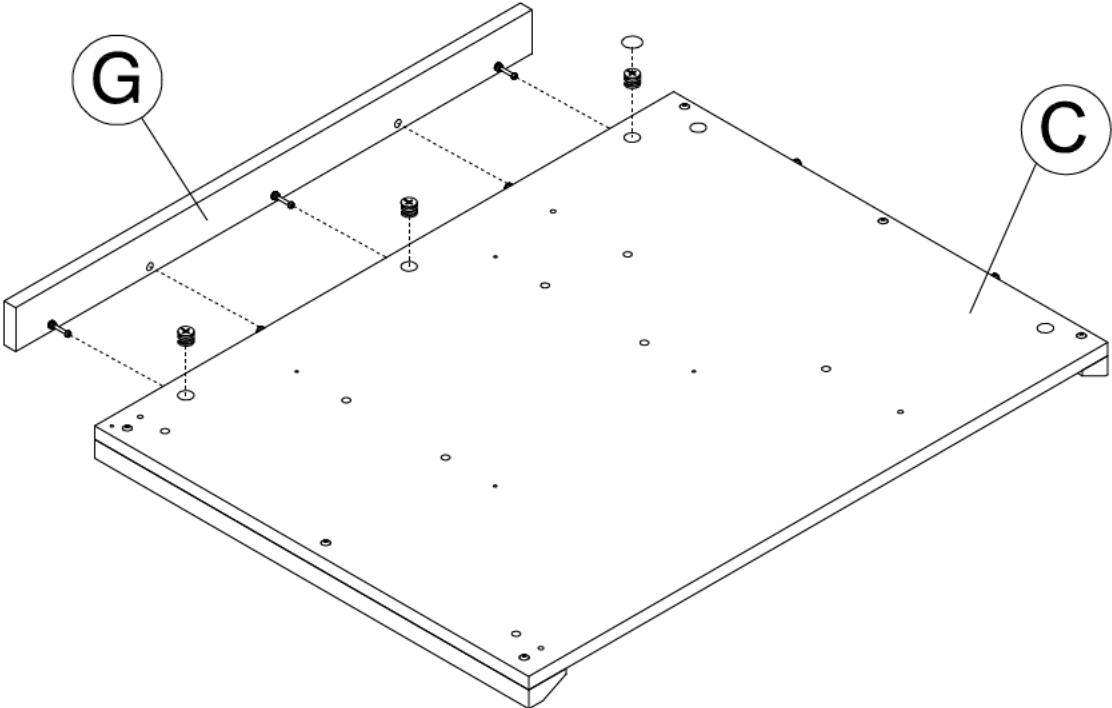


[6]

H175127

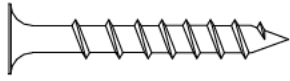


[2]



STEP 6

H23198

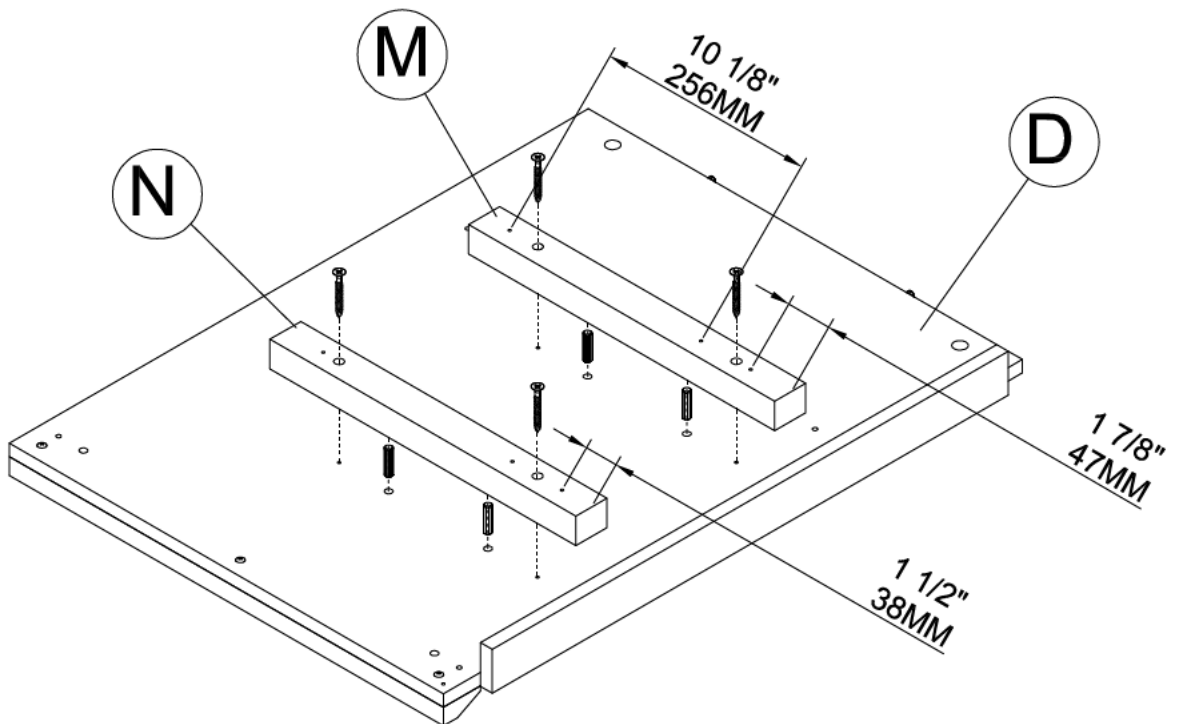
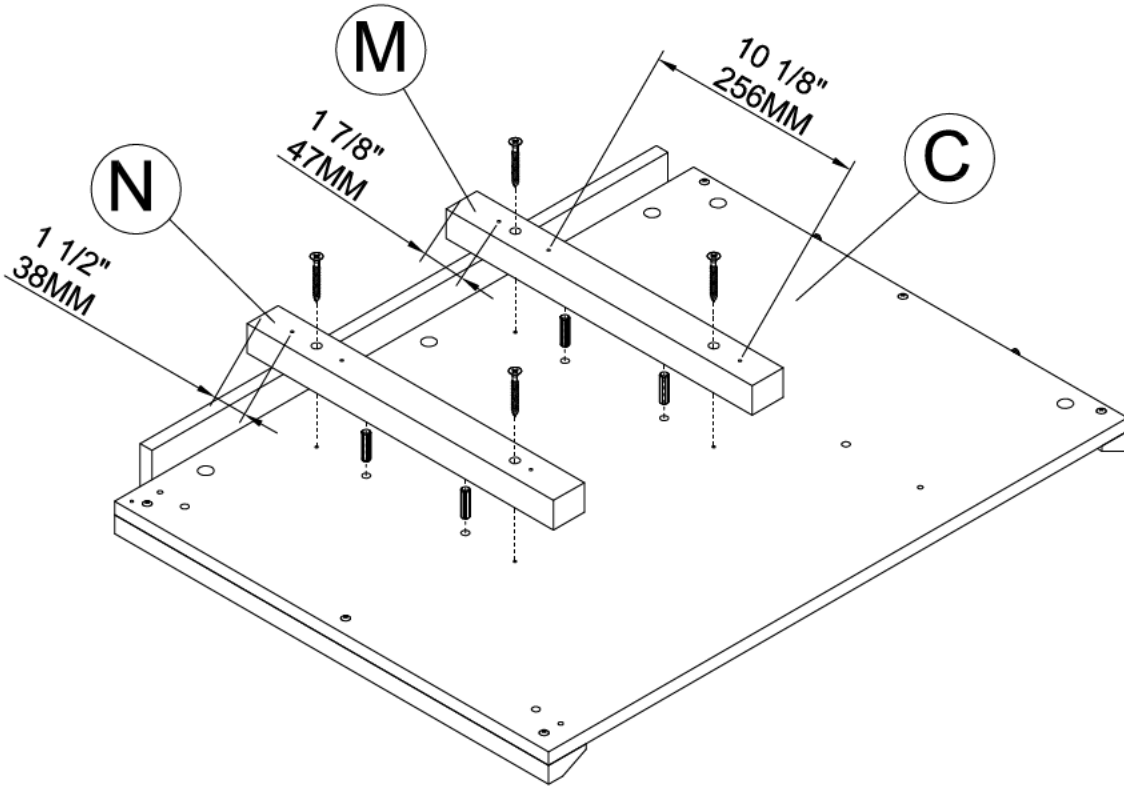


[8]

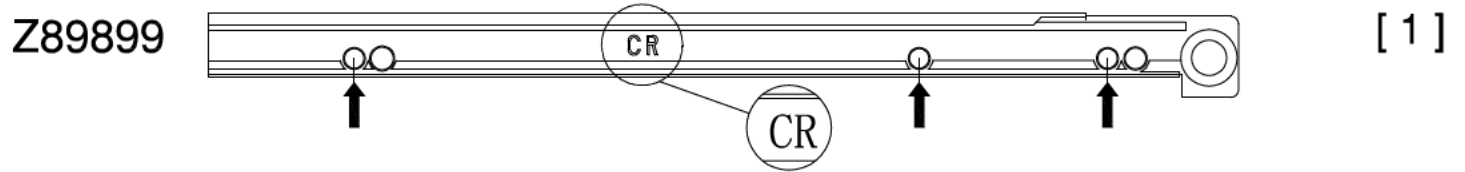
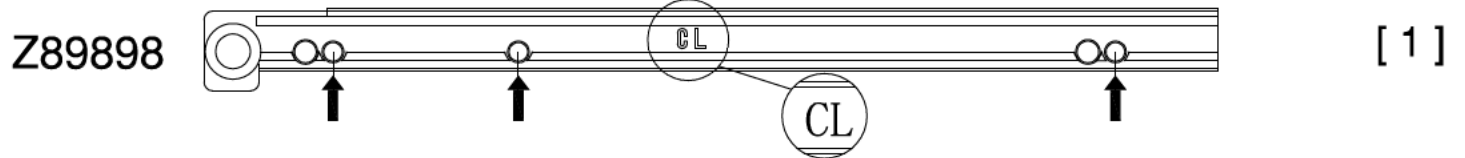
H38169



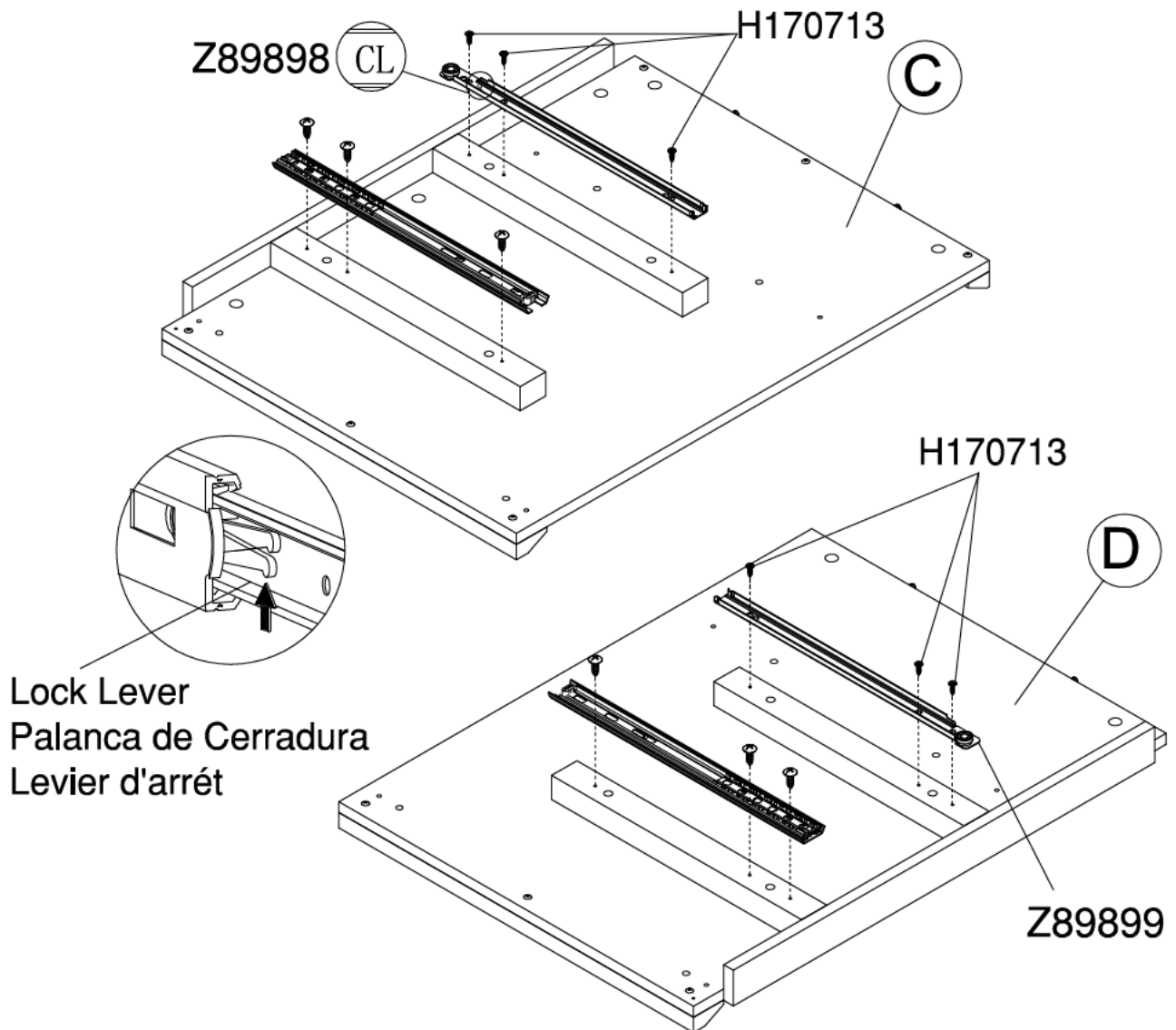
[8]



STEP 7

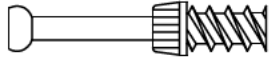


Move lock lever on the drawer runner as shown and separate drawer runner from drawer slide.
 Mueva Palanca de Cerradura en la corredera como se muestra y separe la corredera del deslizable.
 Relever le Levier d'arrêt sur la coulisse pour tirer et séparez le coulisseau de la coulisse tel que montré.



STEP 8

H159917



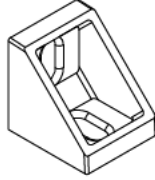
[8]

H101725

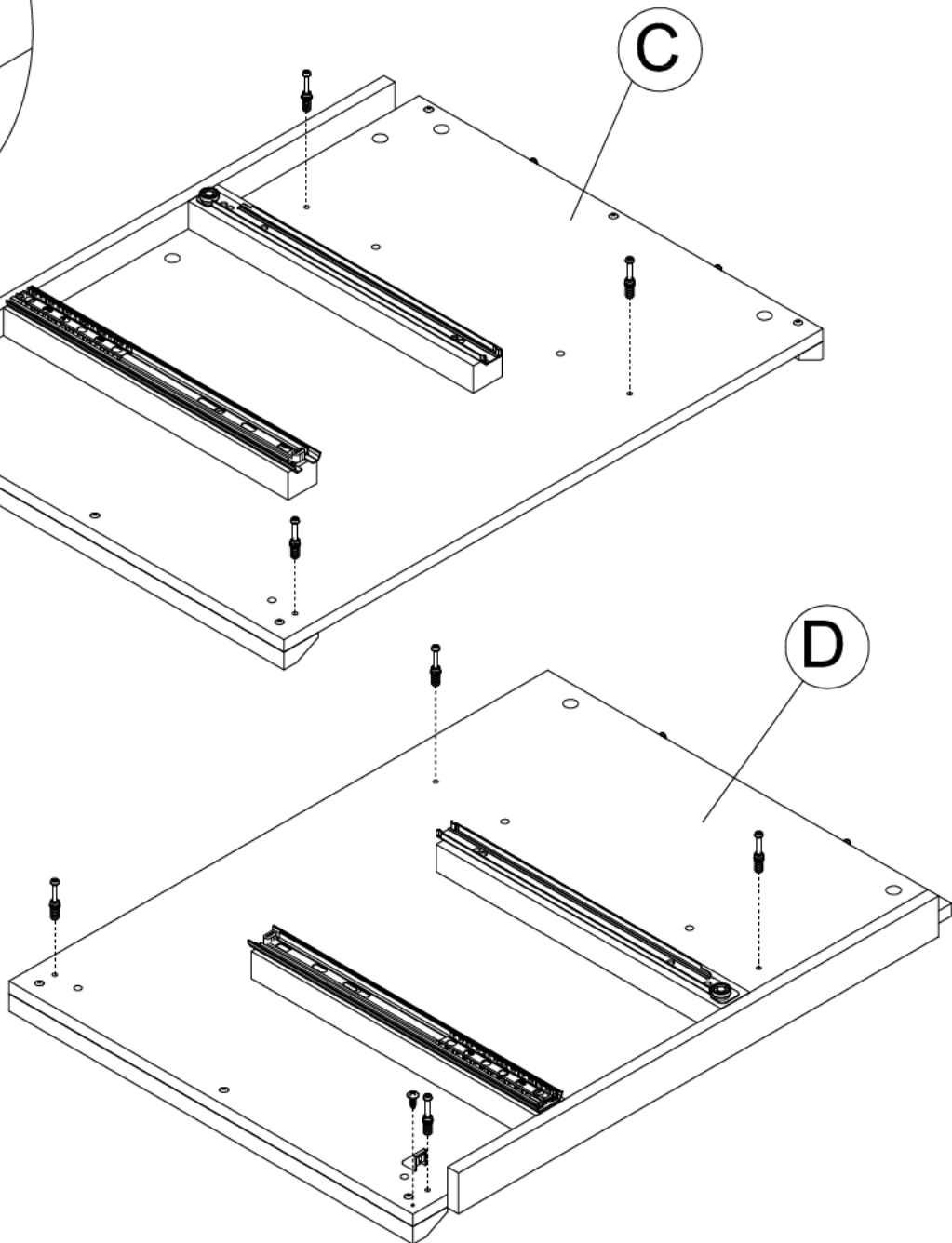
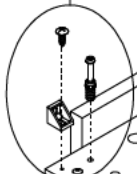
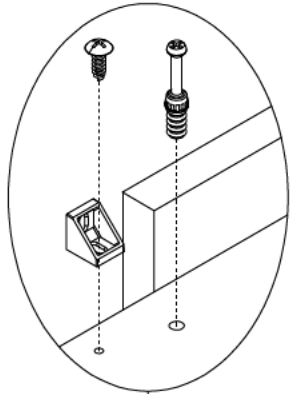


[2]

H137197



[2]

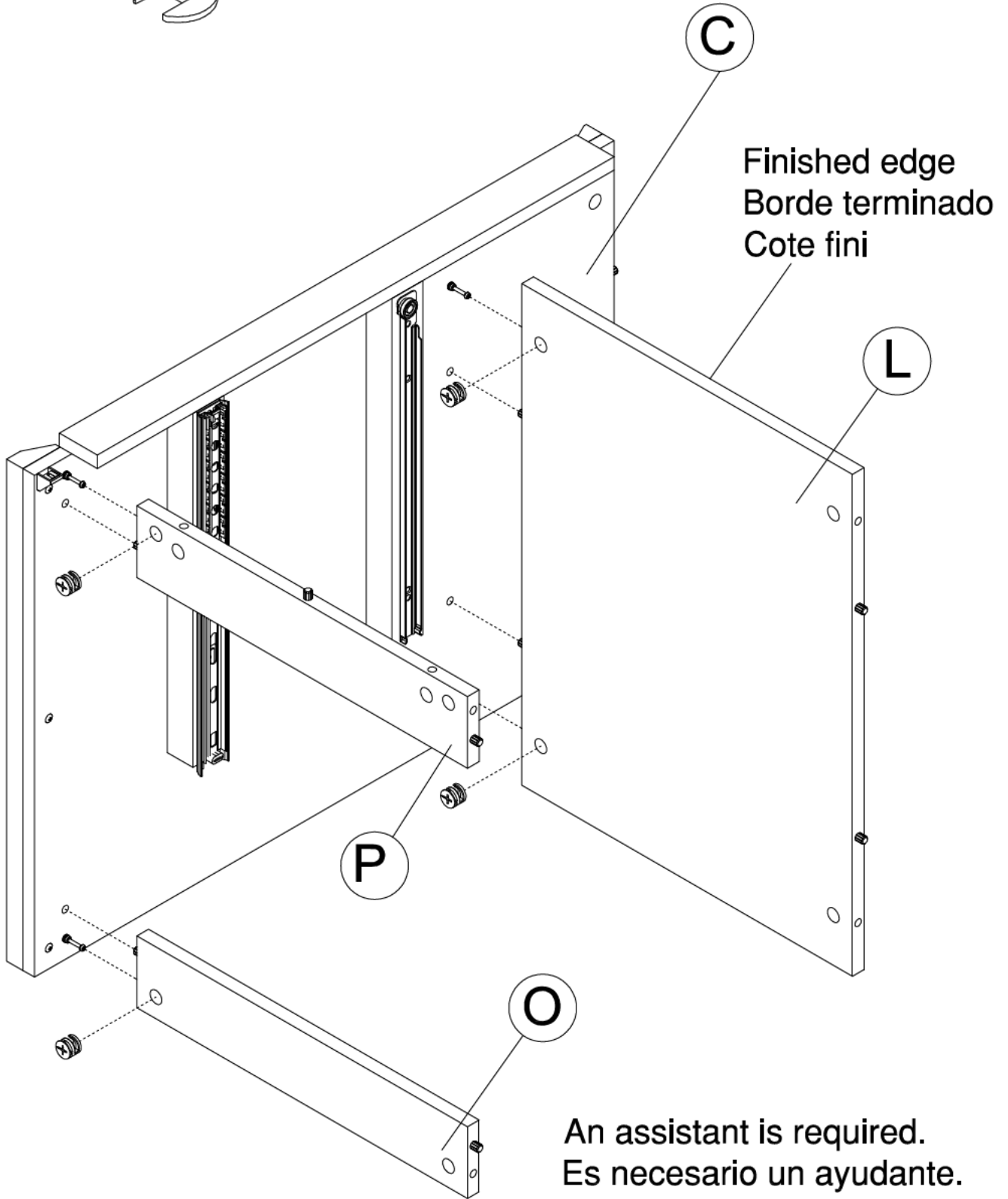


STEP 9

H159916



[4]



Finished edge
Borde terminado
Cote fini

An assistant is required.
Es necesario un ayudante.
Un assistant est nécessaire.

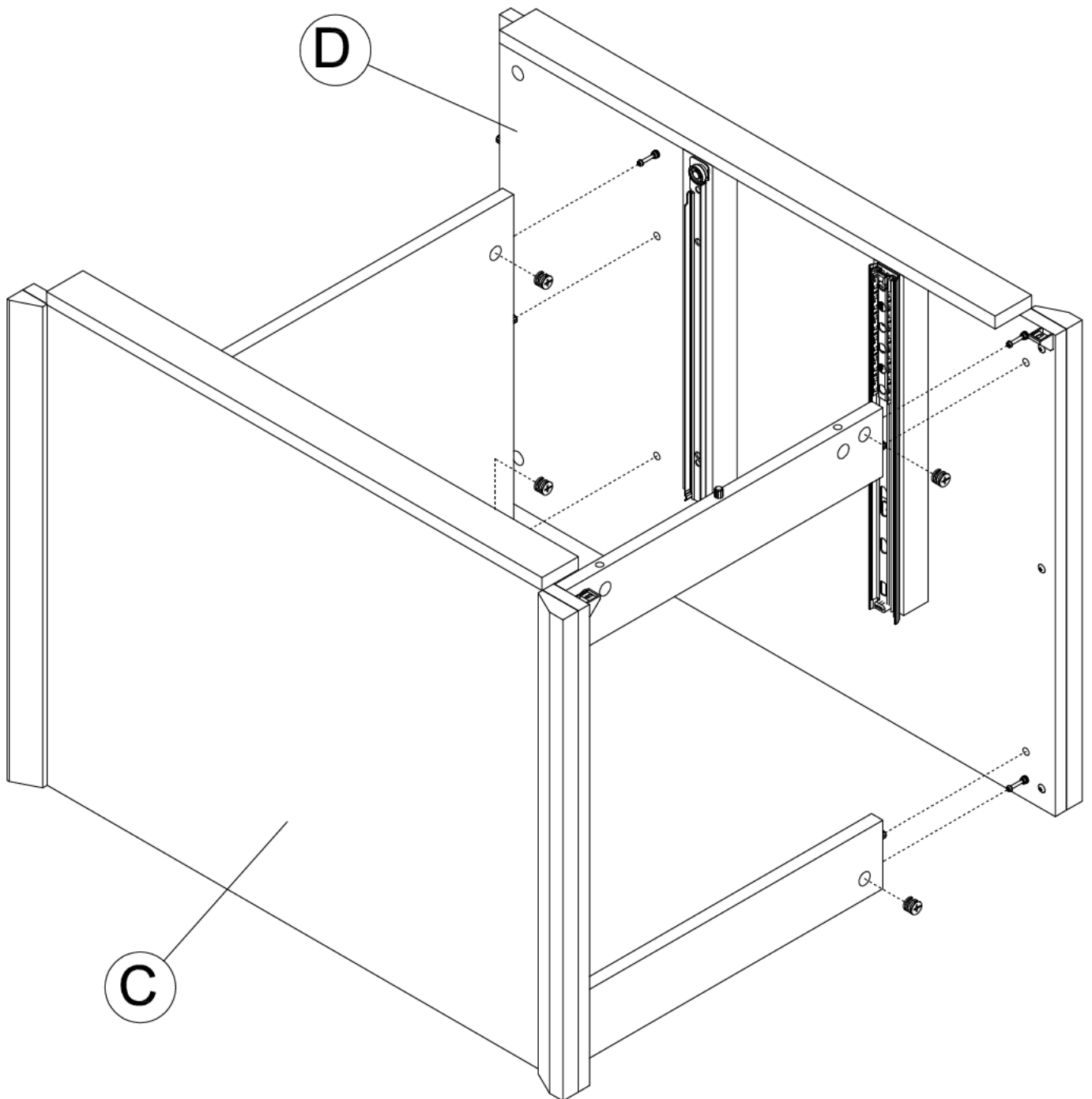
STEP 10

H159916



[4]

An assistant is required.
Es necesario un ayudante.
Un assistant est nécessaire.



STEP 11

H159916



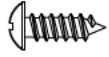
[2]

H20385

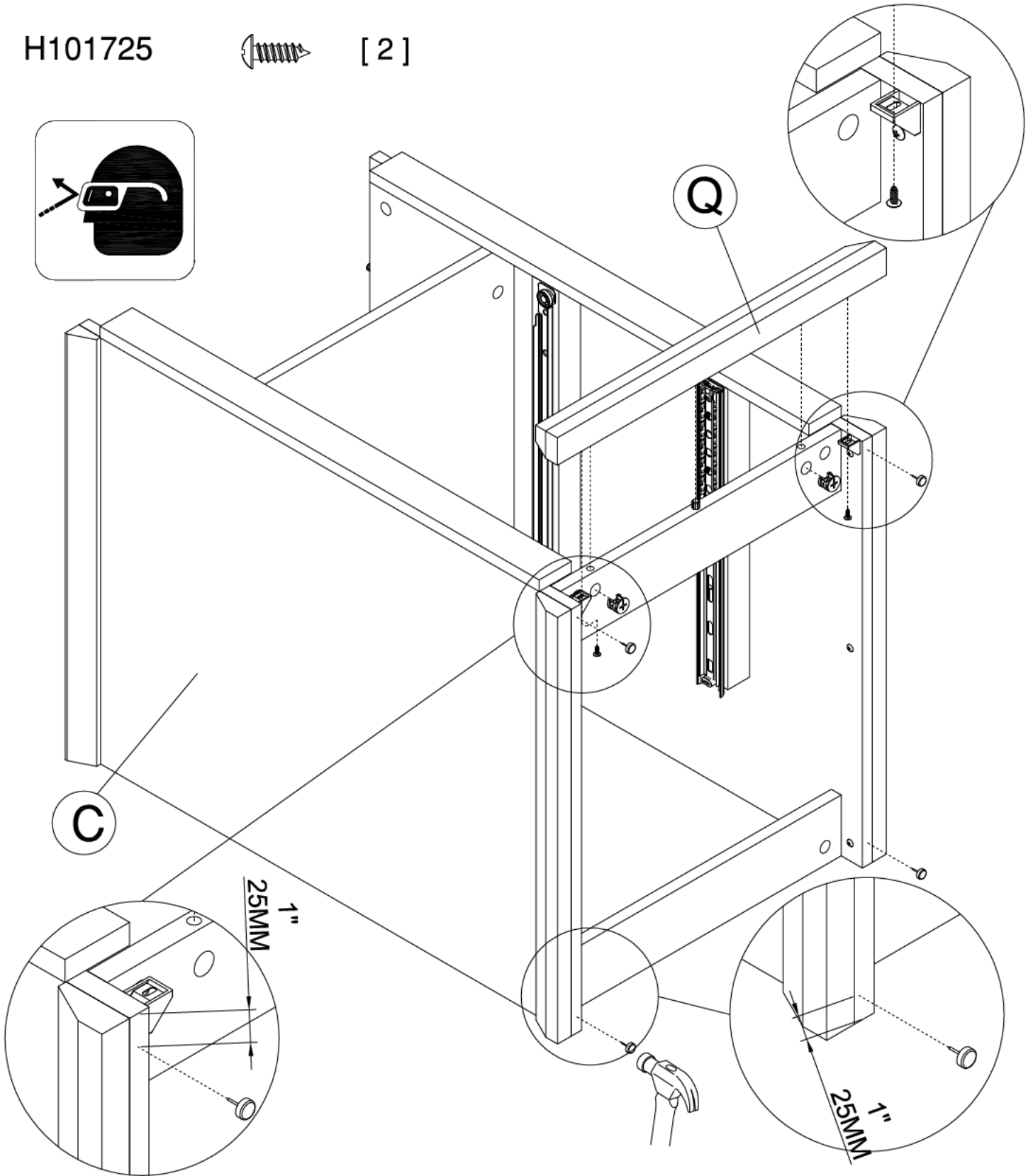


[4]

H101725

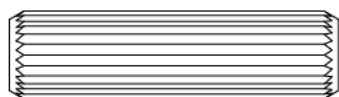


[2]



STEP 12

H38169

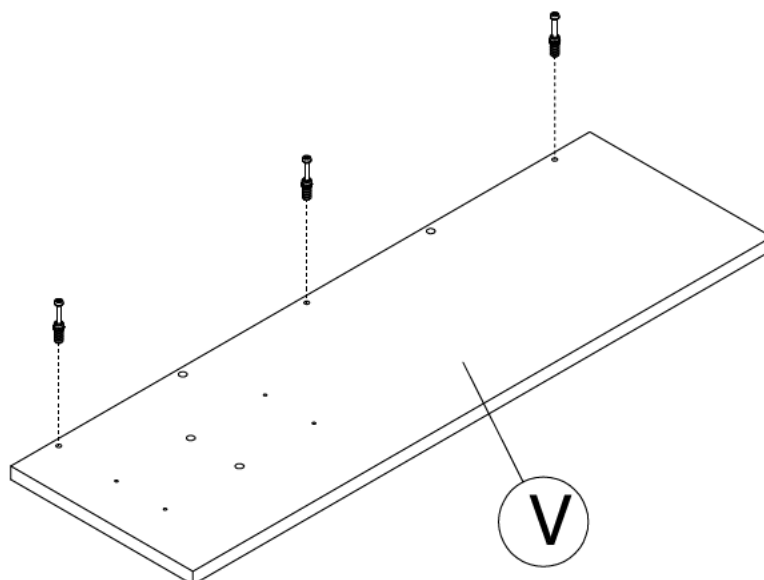
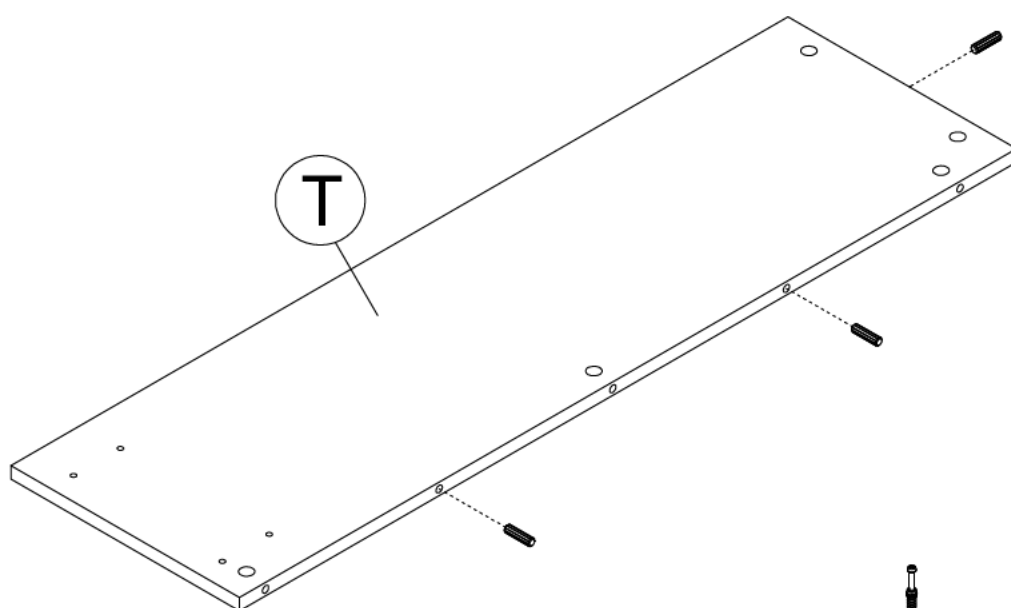


[3]

H159917

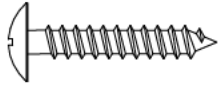


[3]



STEP 13

H150019



[4]

H20385

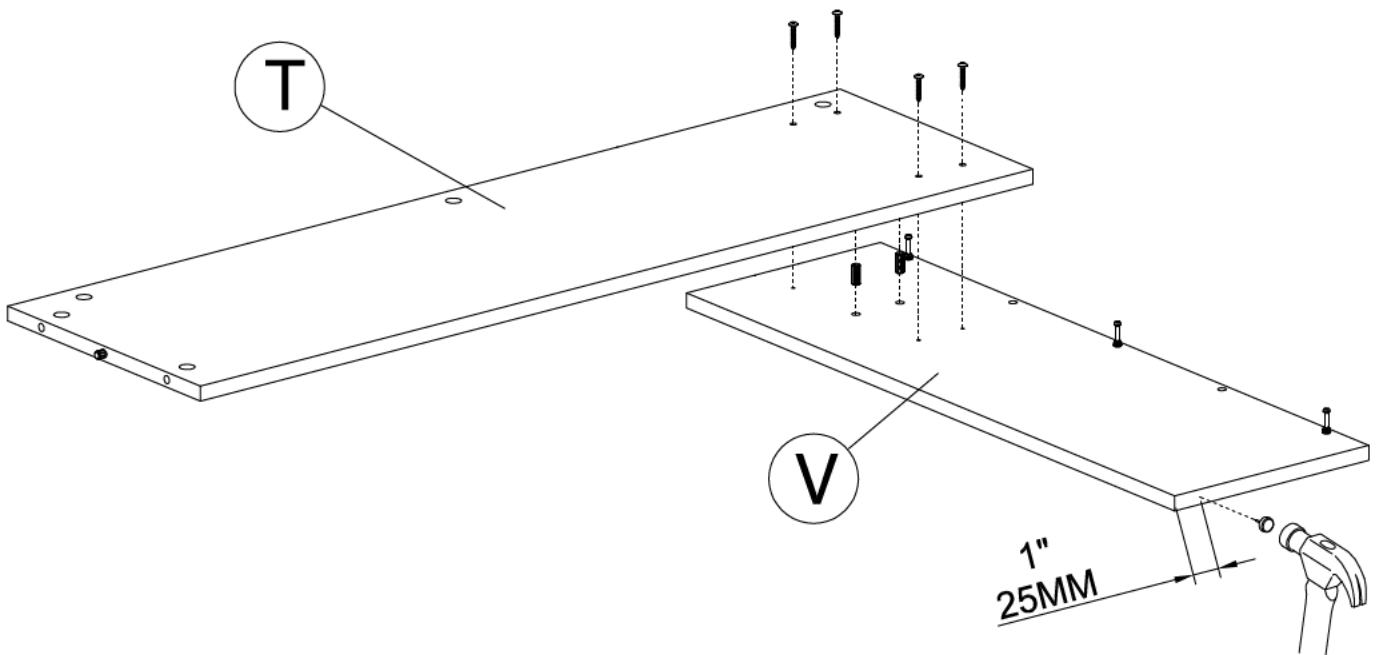


[1]

H158986



[2]



An assistant is required.
Es necesario un ayudante.
Un assistant est nécessaire.

STEP 14

H159916



[2]

H175127

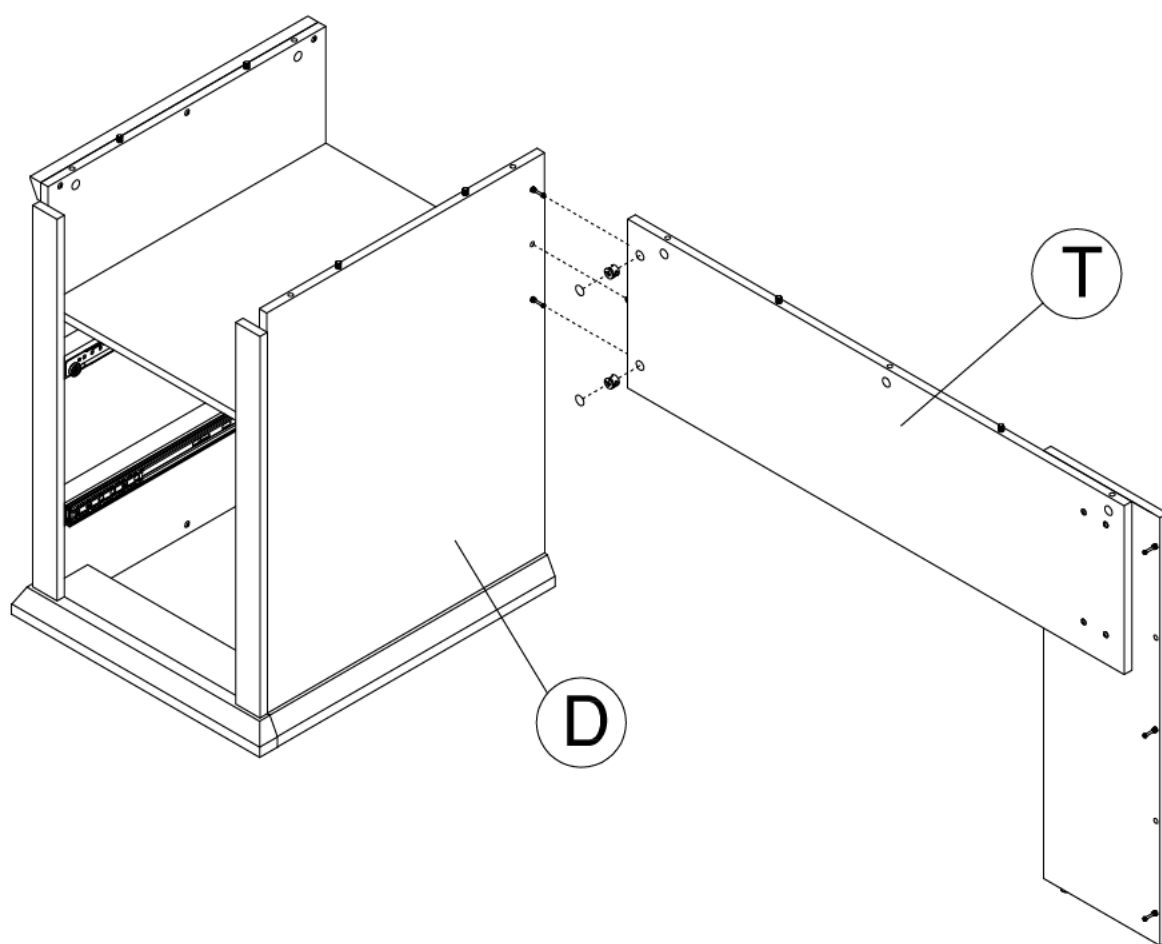


[2]

With assistant carefully flip unit over.

Con un asistente cuidadosamente acueste la unidad.

Avec l'aide d'une autre personne, retourner lentement l'unité sur le rebord frontal.

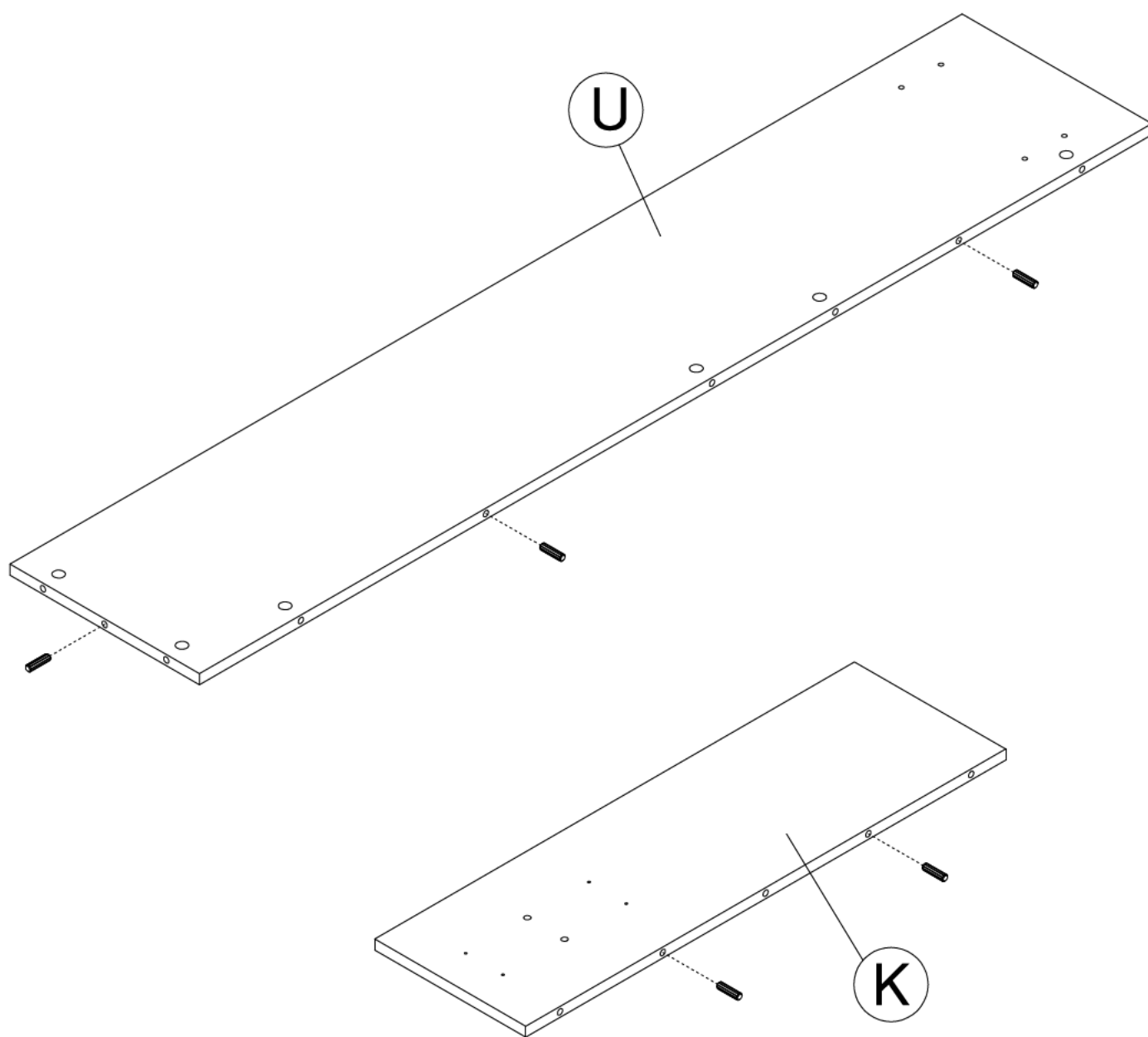
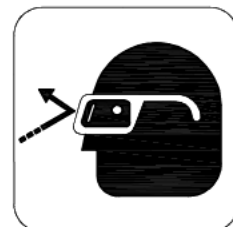


STEP 15

H38169



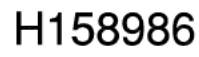
[5]



STEP 16



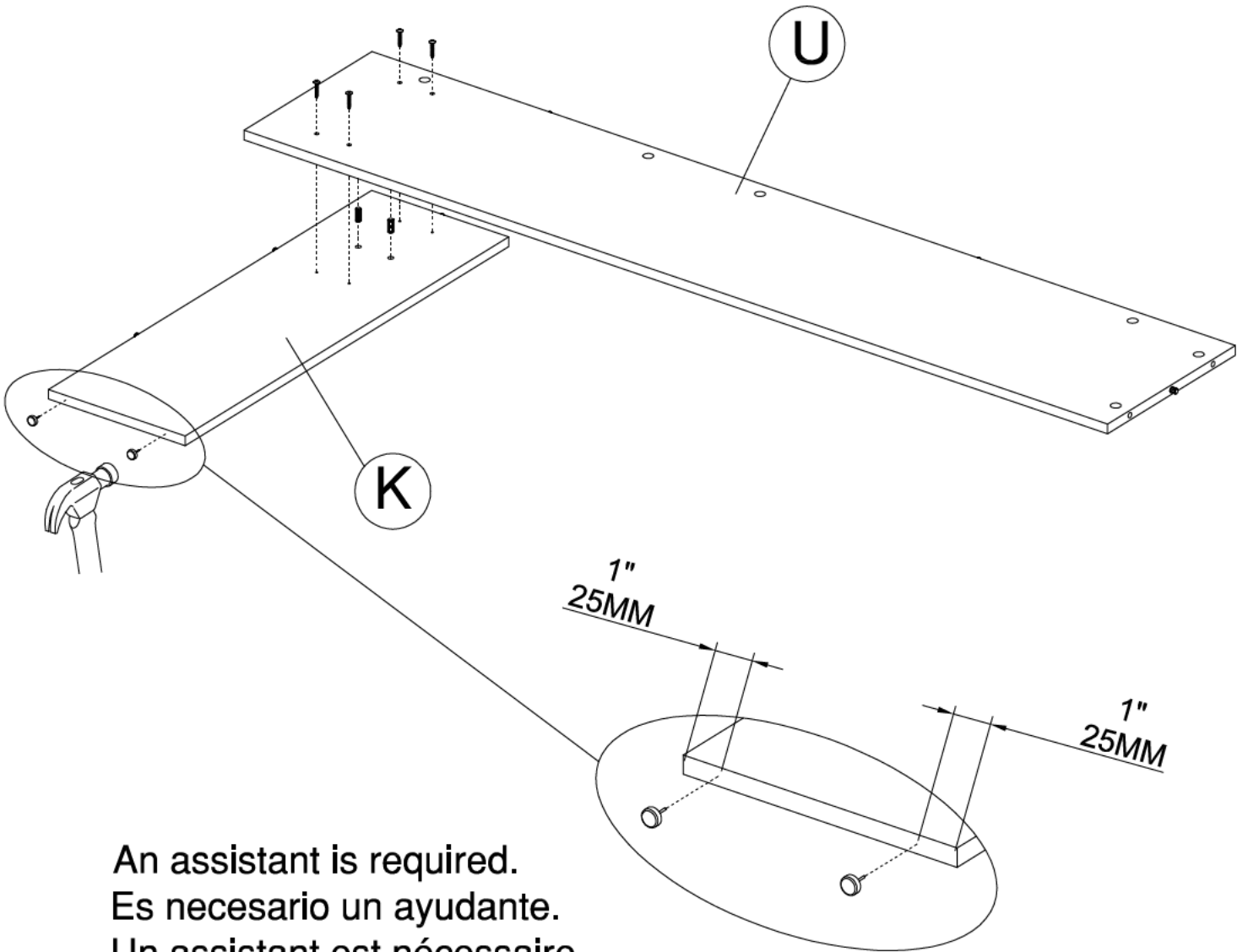
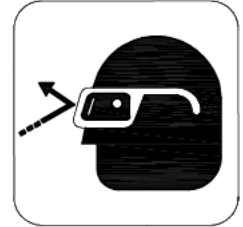
[4]



[2]



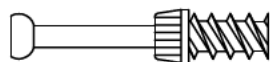
[2]



An assistant is required.
Es necesario un ayudante.
Un assistant est nécessaire.

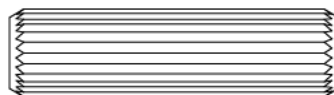
STEP 17

H159917



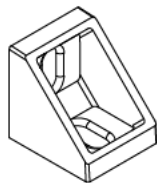
[3]

H38169



[4]

H137197

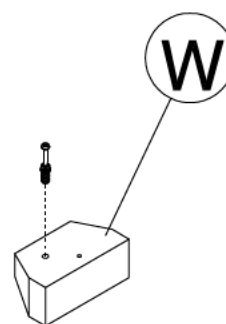
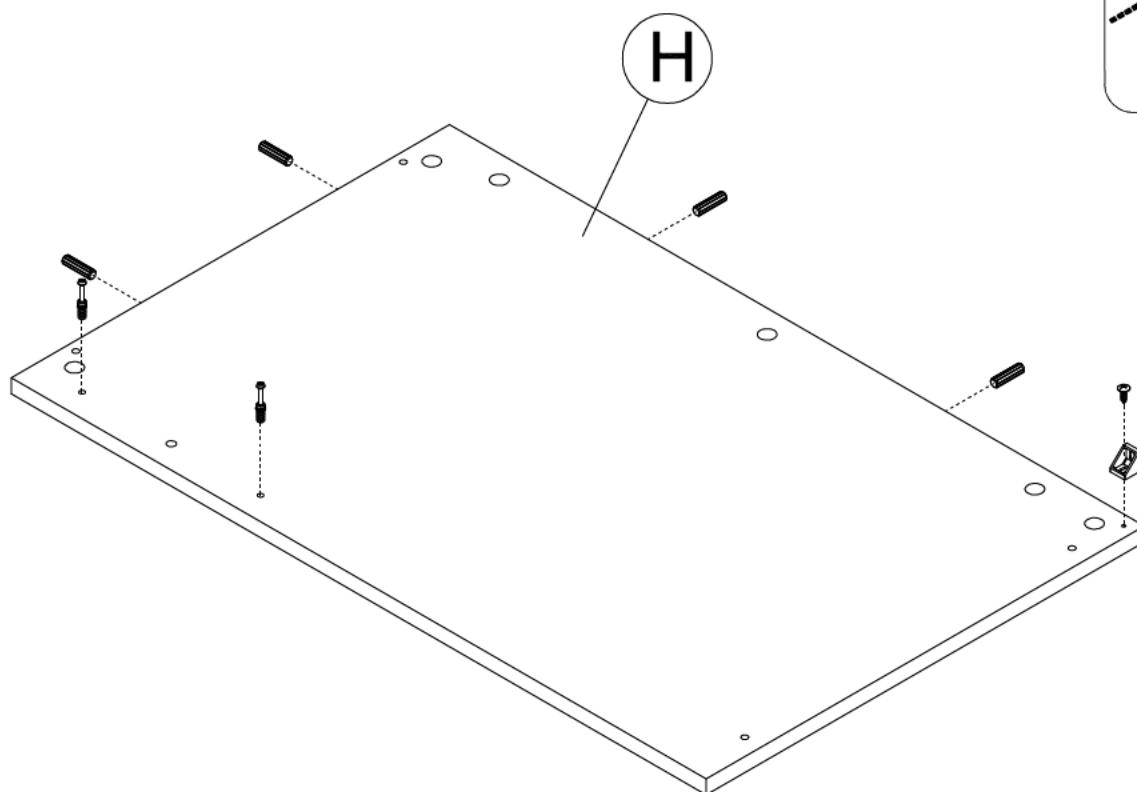


[1]

H101725

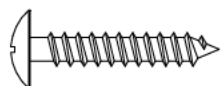


[1]



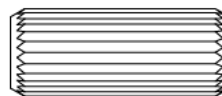
STEP 18

H150019

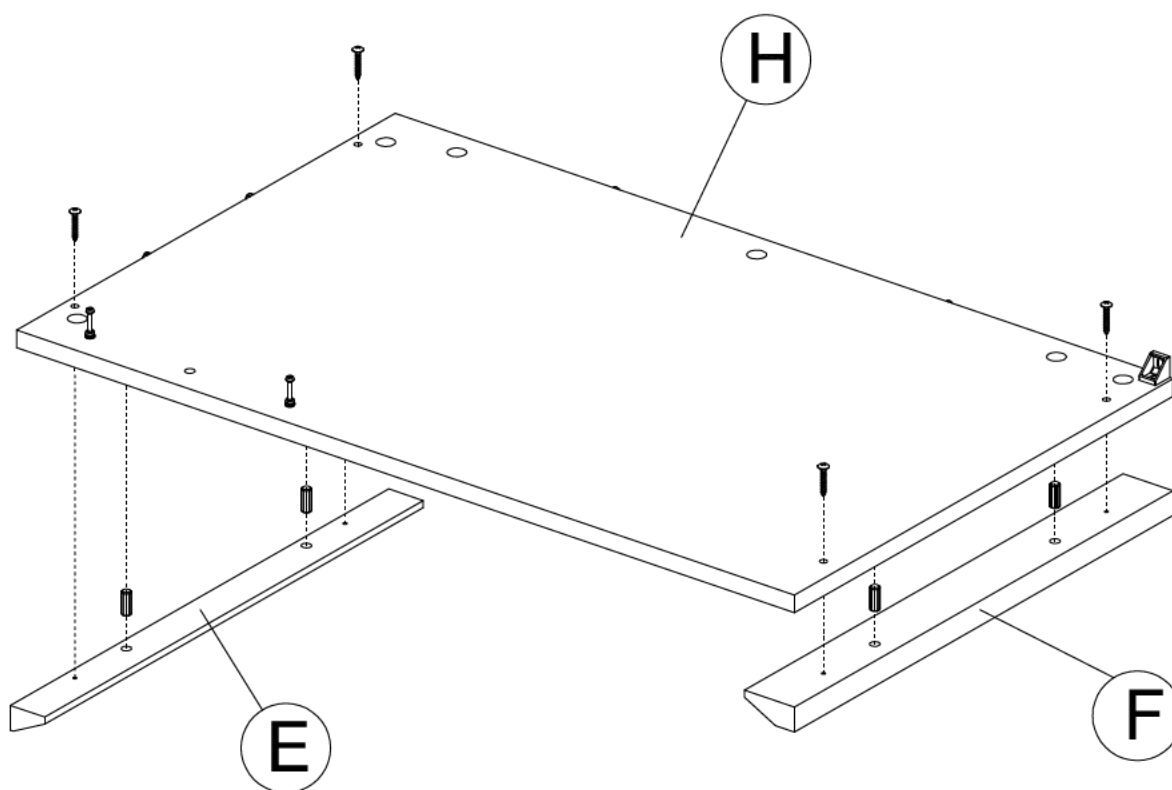
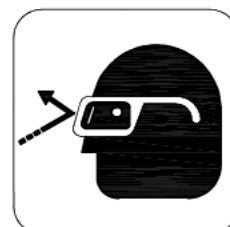


[4]

H158986



[4]



An assistant is required.
Es necesario un ayudante.
Un assistant est nécessaire.

STEP 19

H159916



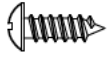
[4]

H175127



[4]

H101725

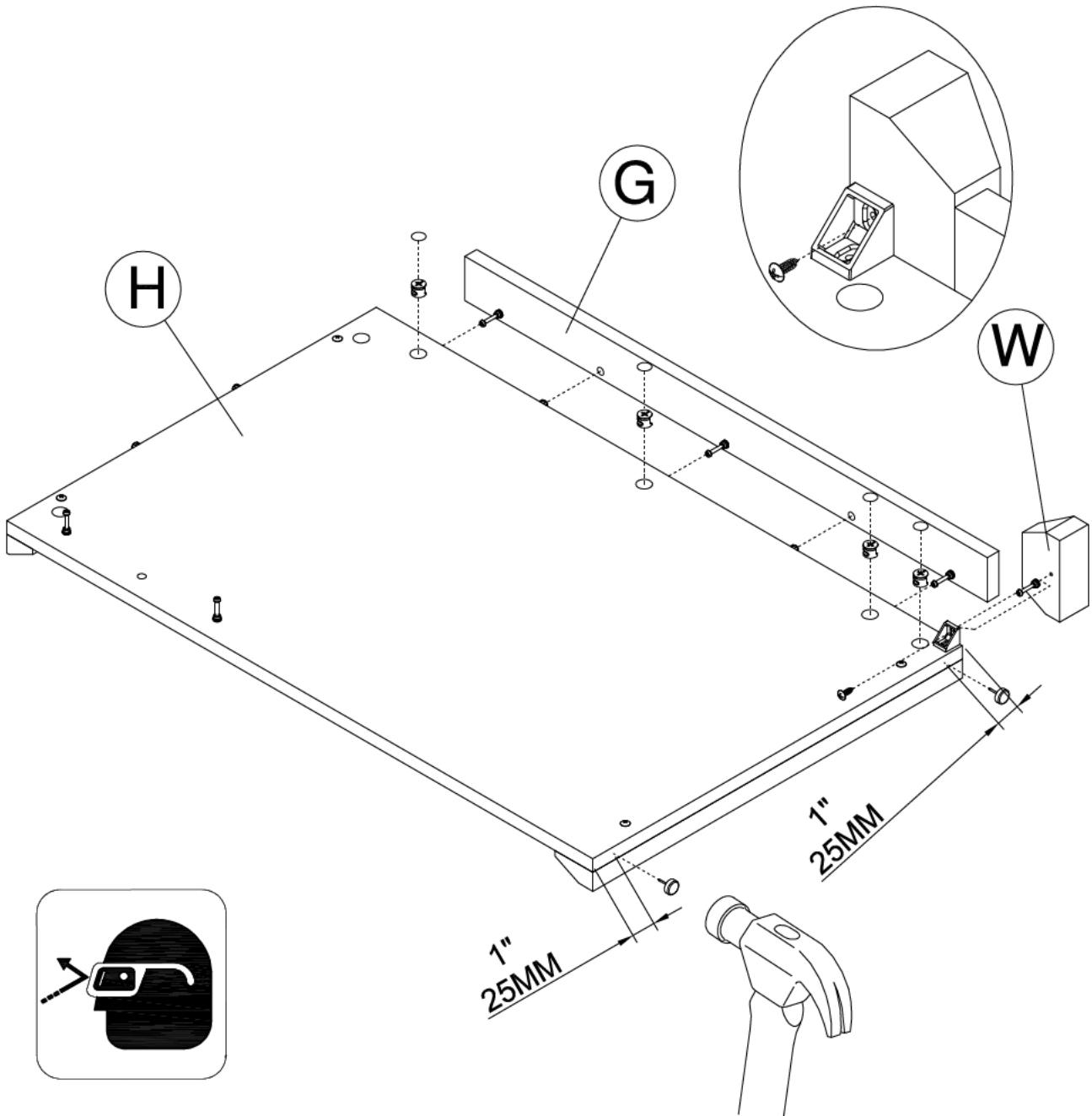


[1]

H20385



[2]



STEP 20

H159916

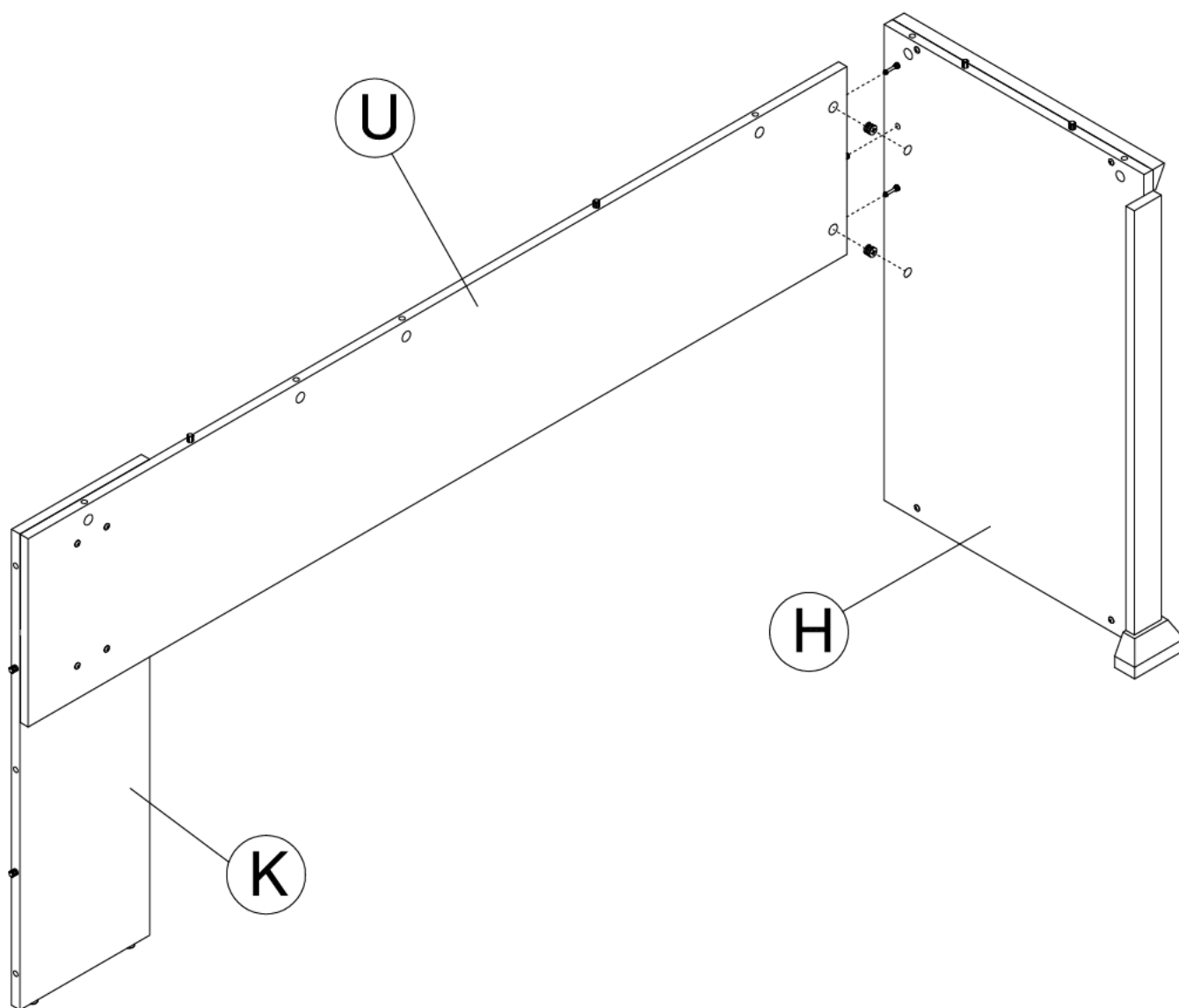


[2]

H175127

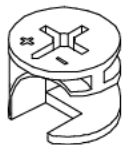


[2]



STEP 21

H159916

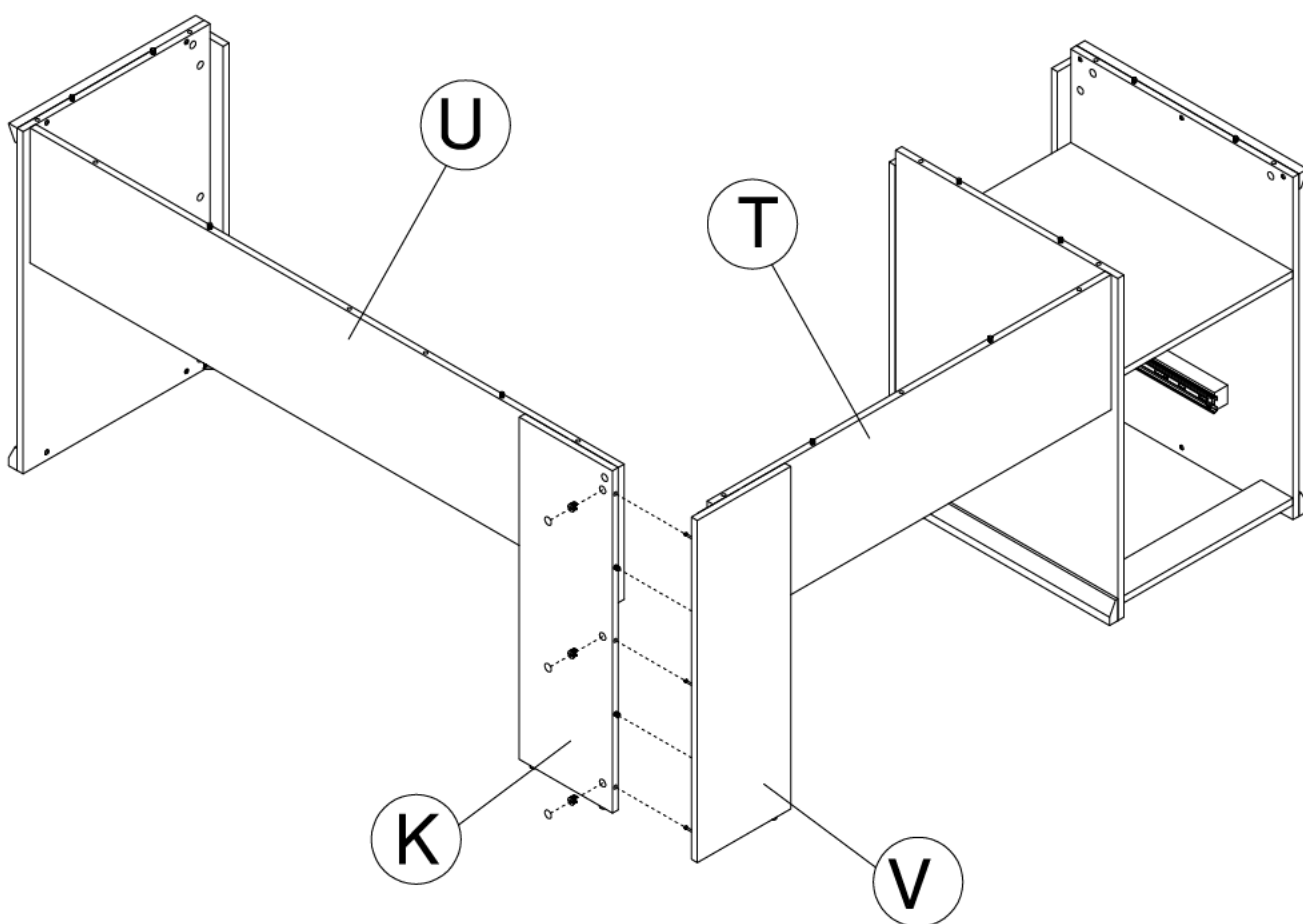


[3]

H175127

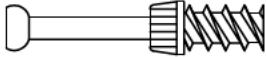

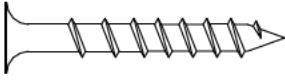
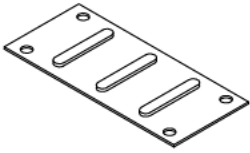
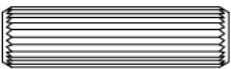


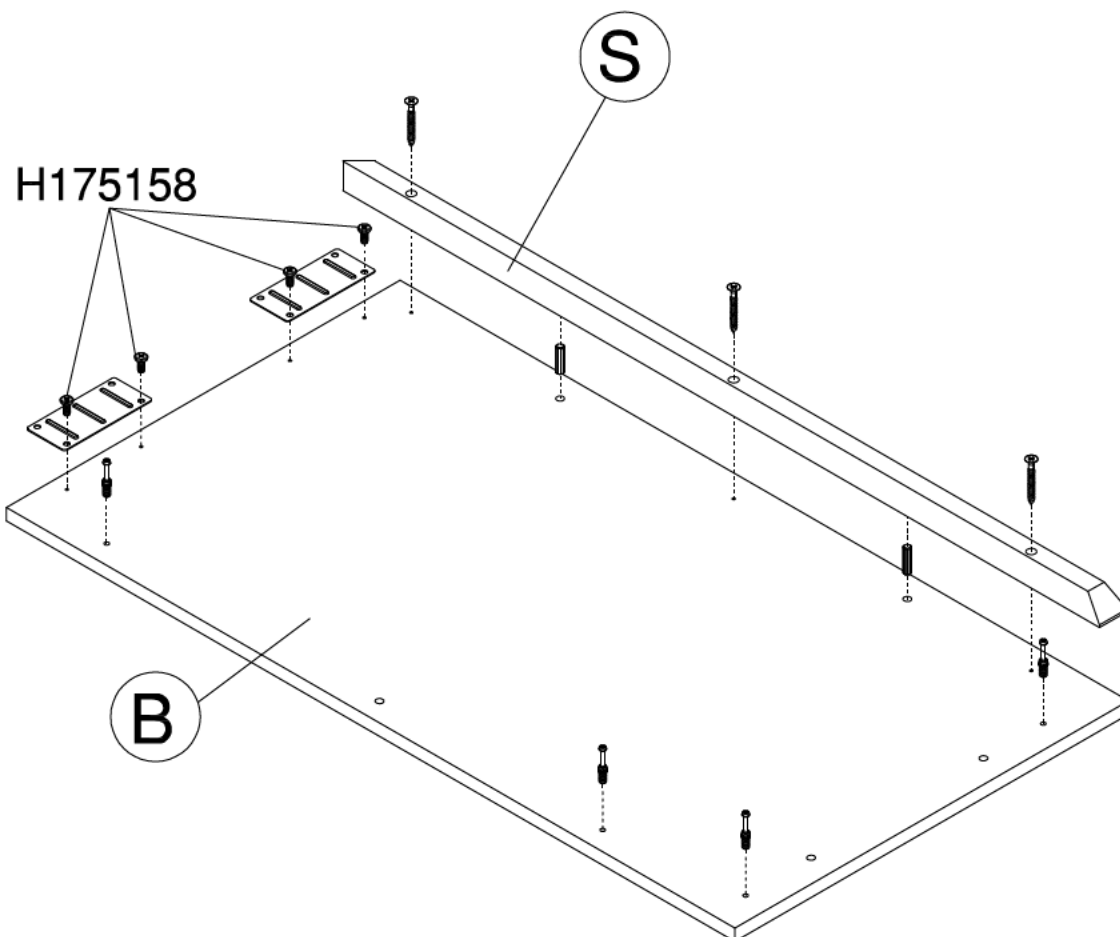
[3]



An assistant is required.
Es necesario un ayudante.
Un assistant est nécessaire.

STEP 22

H159917		[4]	H175158		[4]
H23198		[3]	H39922		[2]
H38169		[2]			



An assistant is required.
Es necesario un ayudante.
Un assistant est nécessaire.

STEP 23

H159916



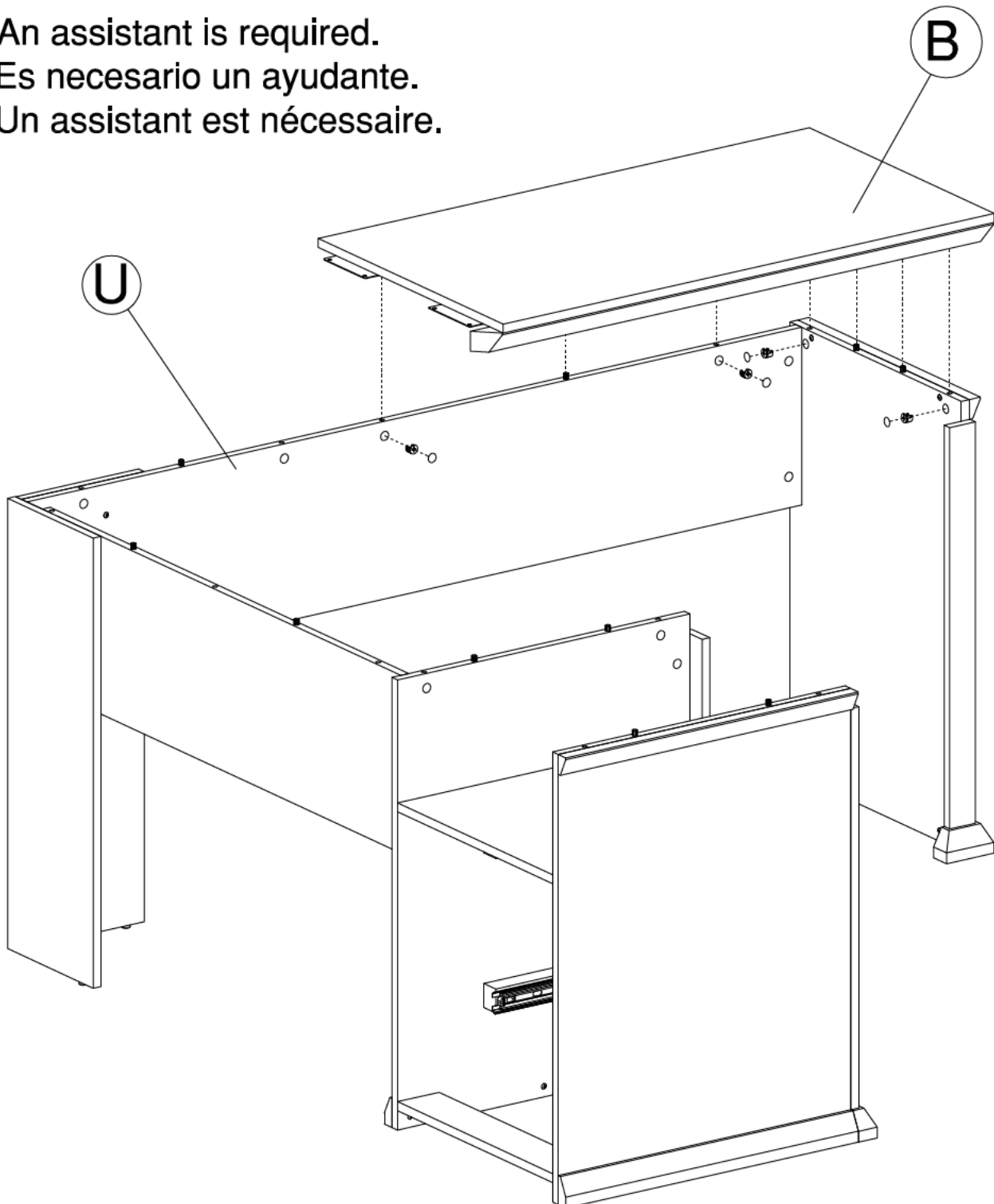
[4]

H175127



[4]

An assistant is required.
Es necesario un ayudante.
Un assistant est nécessaire.



STEP 24

H159917



[9]

H38169

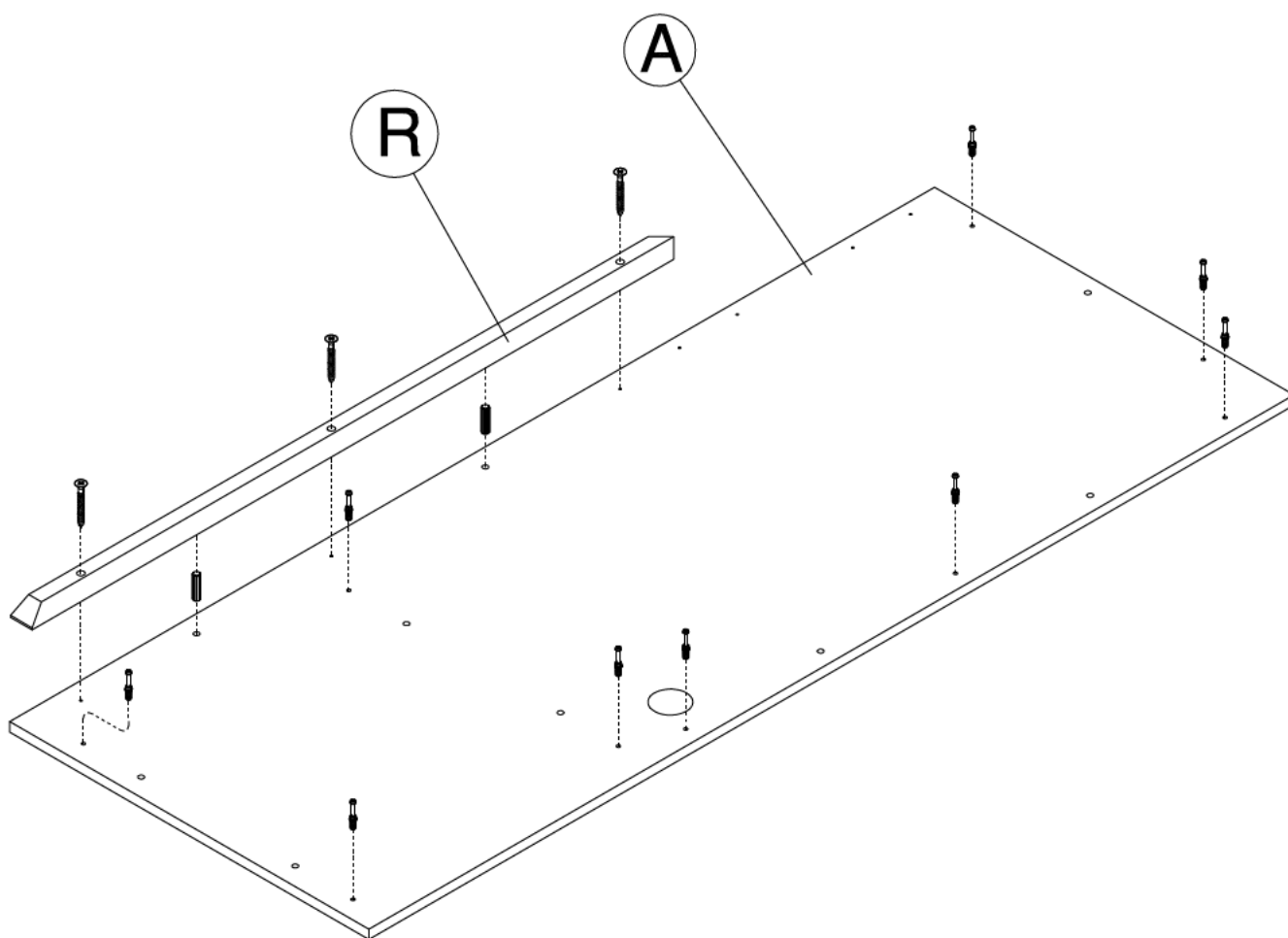


[2]

H23198



[3]



STEP 25

H159916

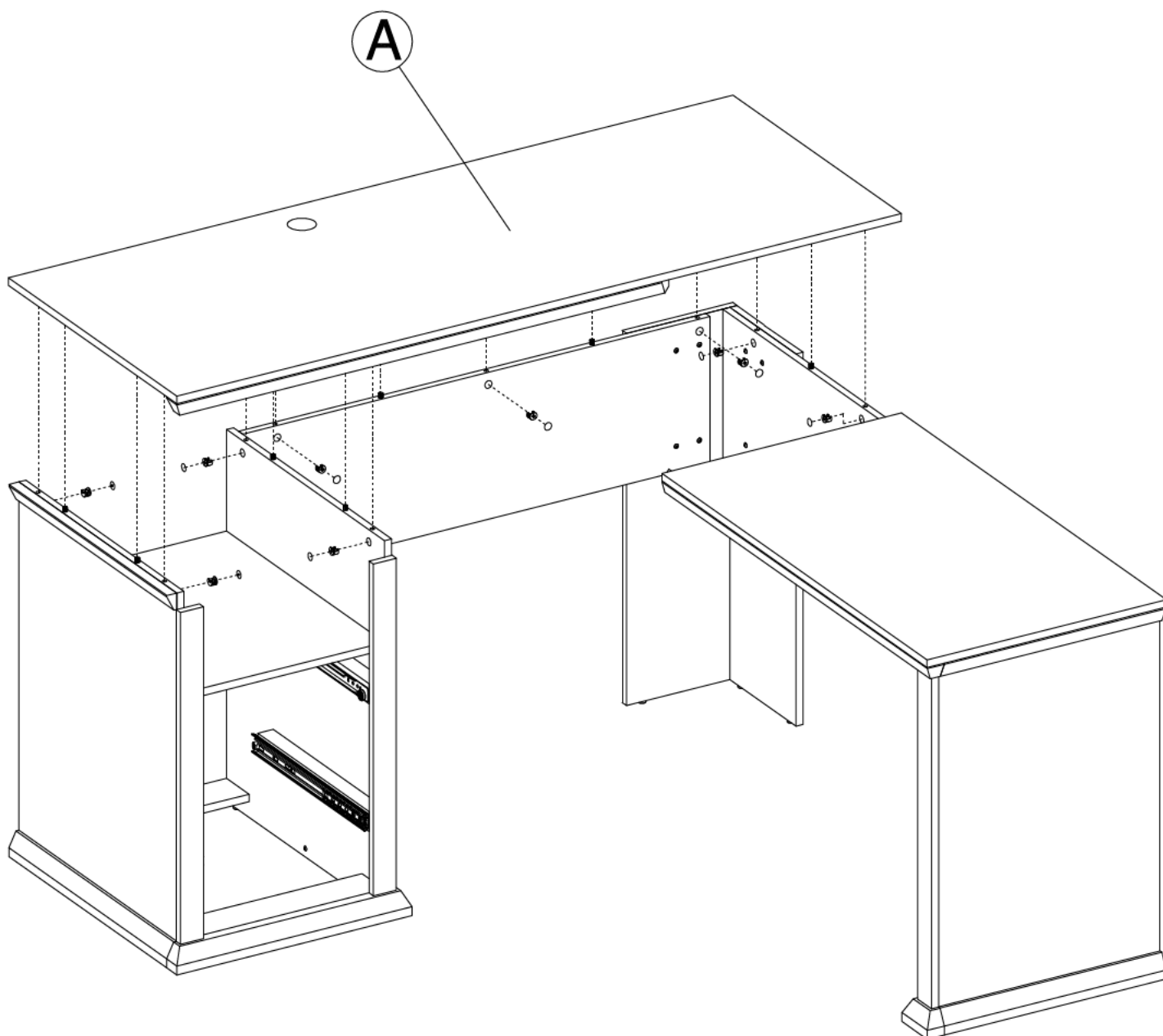


[9]

H175127



[9]



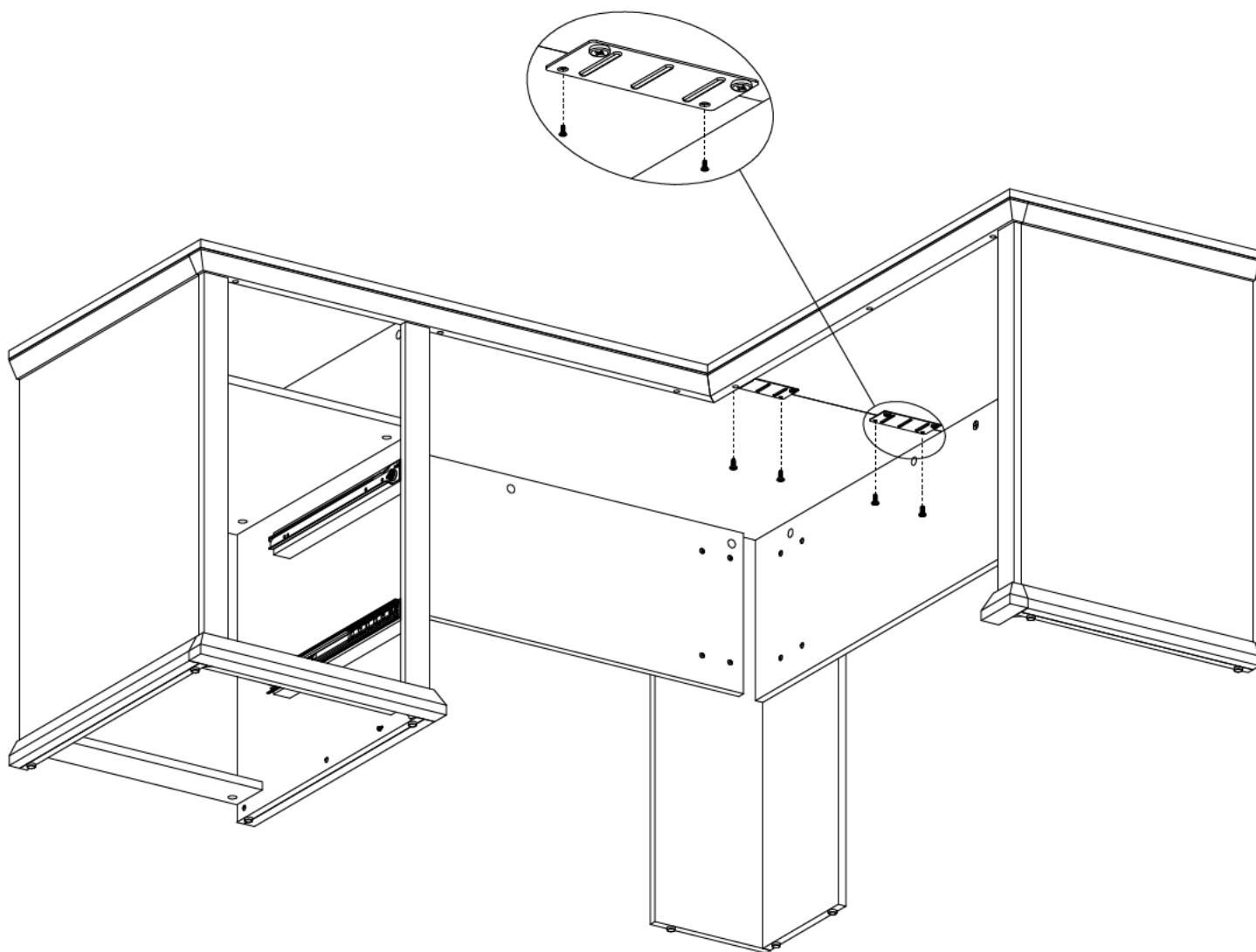
An assistant is required.
Es necesario un ayudante.
Un assistant est nécessaire.

STEP 26

H175158



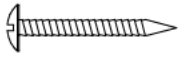
[4]



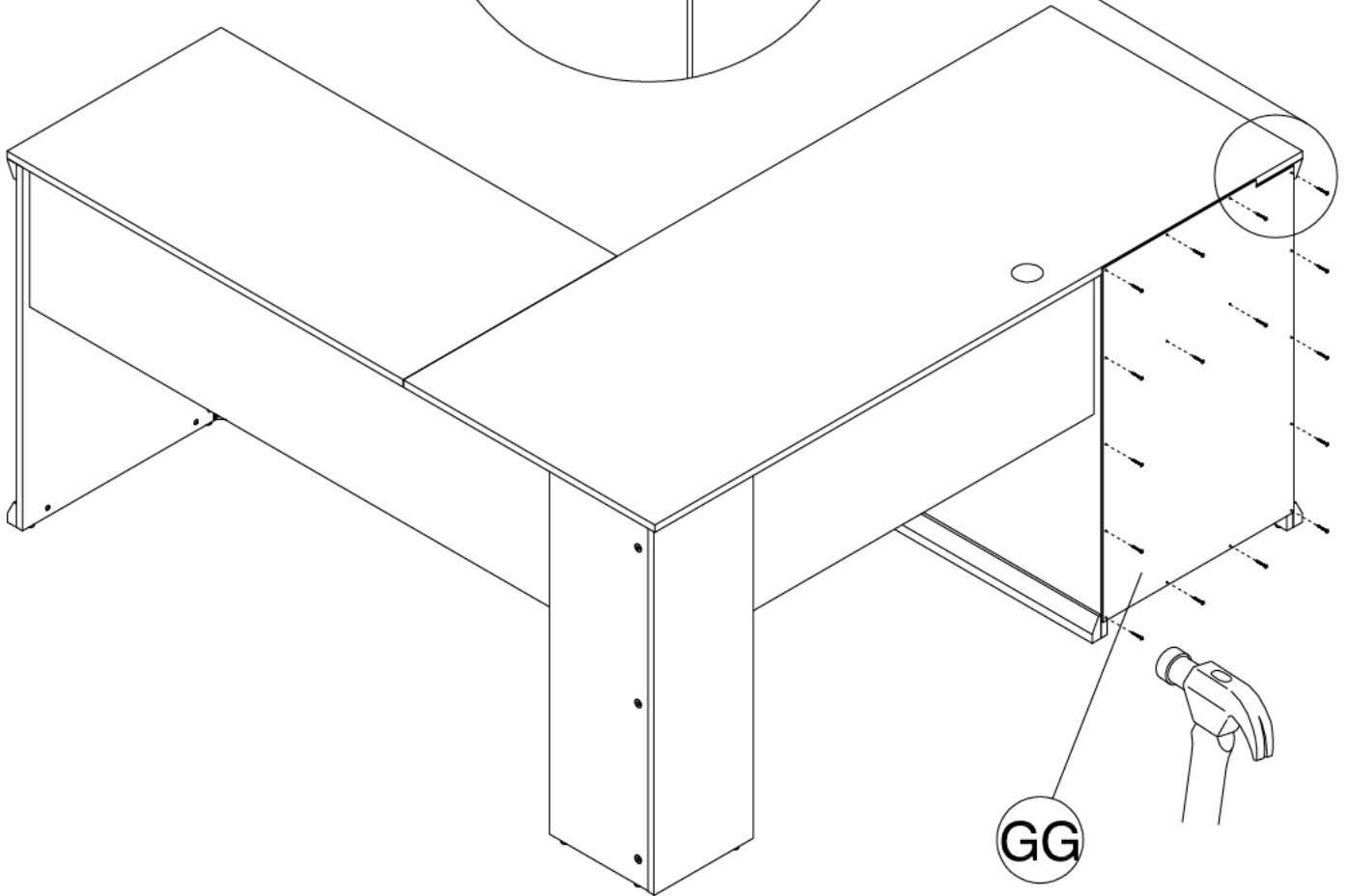
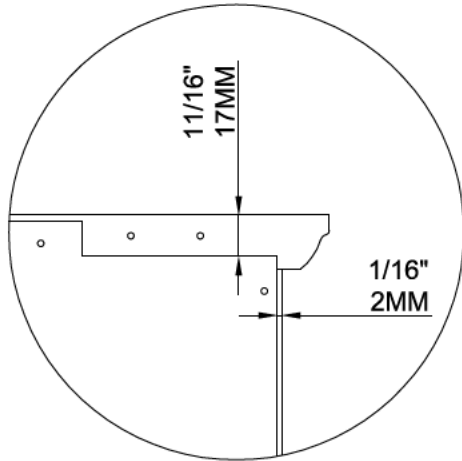
An assistant is required.
Es necesario un ayudante.
Un assistant est nécessaire.

STEP 27

H34174

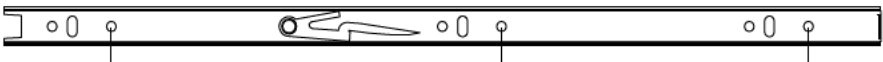


[16]



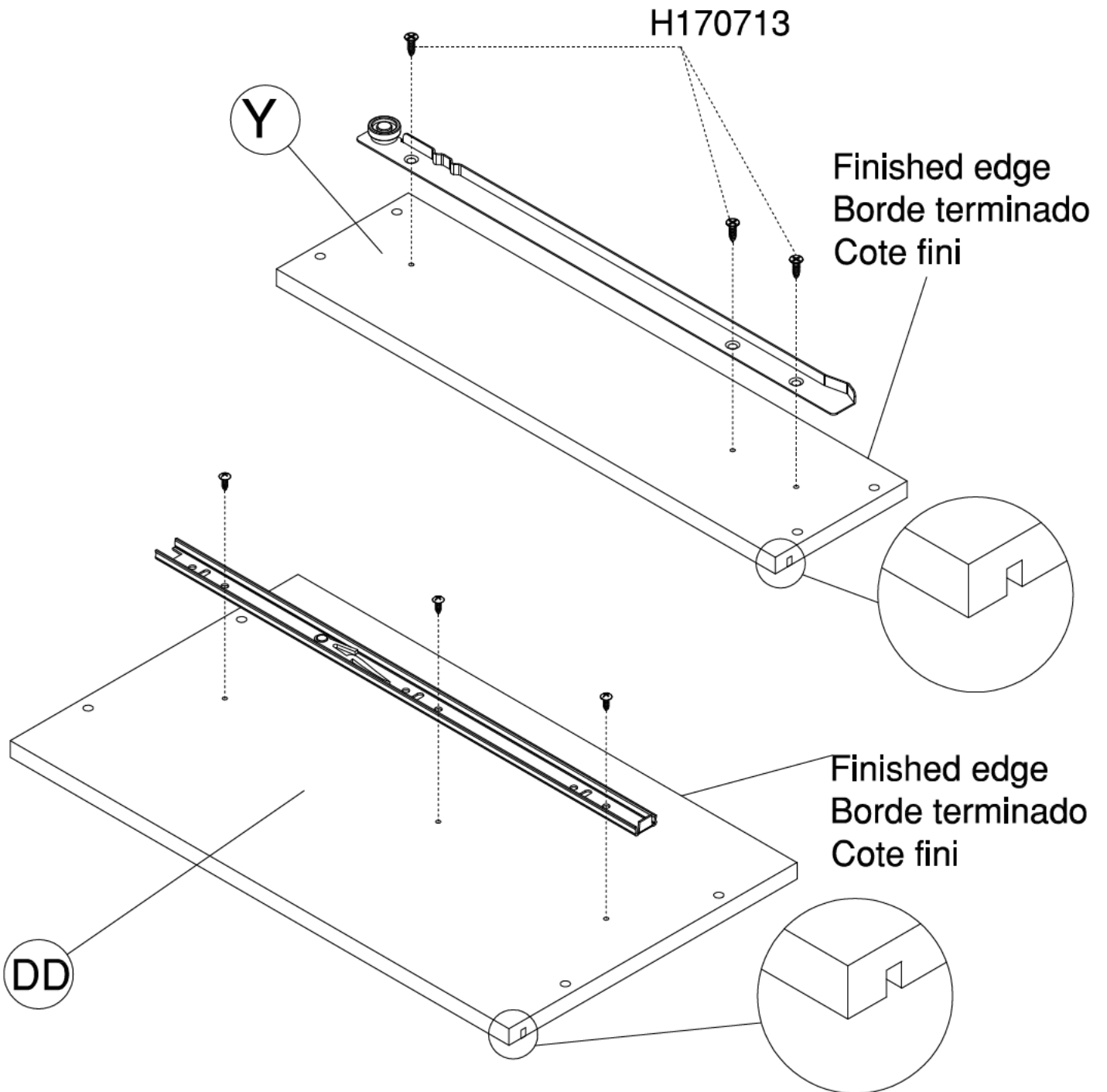
STEP 28

Z89900  [1]

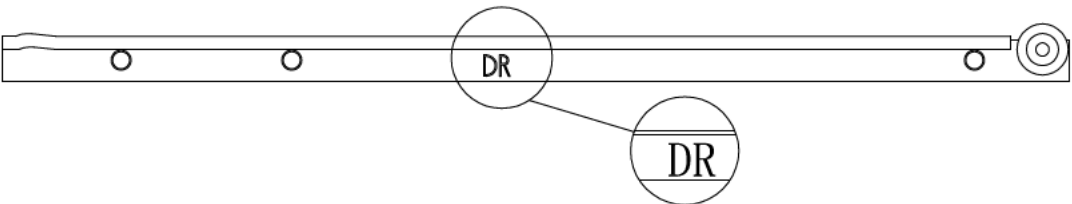
H175081  [1]

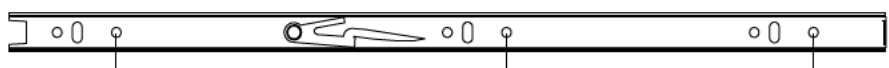
H170713  [3]

H101725  [3]



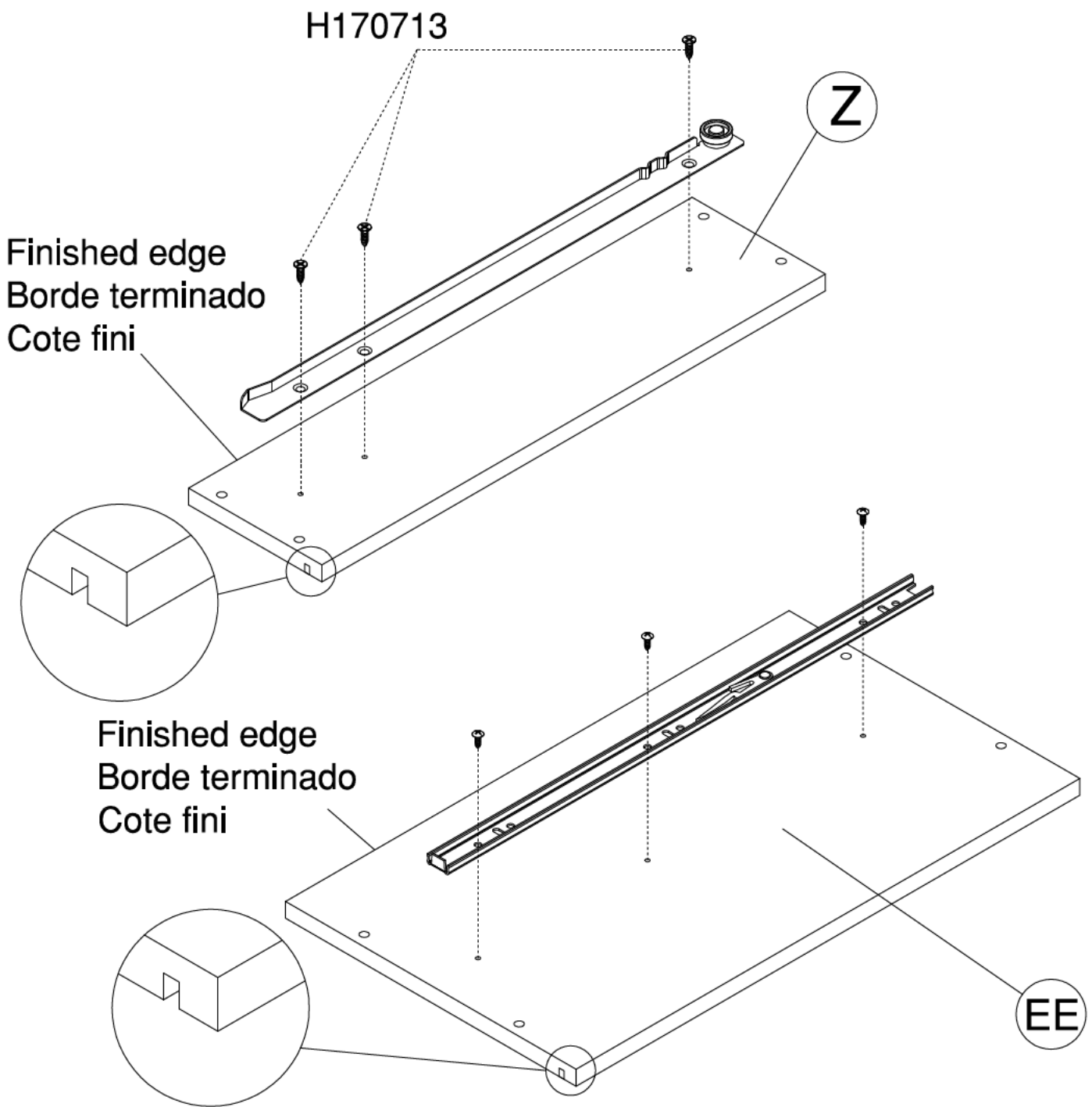
STEP 29

Z89901  [1]

H175081  [1]

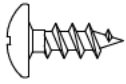
H170713  [3]

H101725  [3]



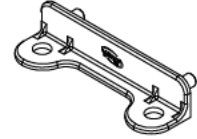
STEP 30

H35251



[8]

H100445



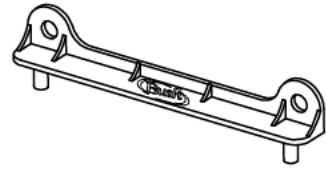
[2]

H127839



[4]

H100446

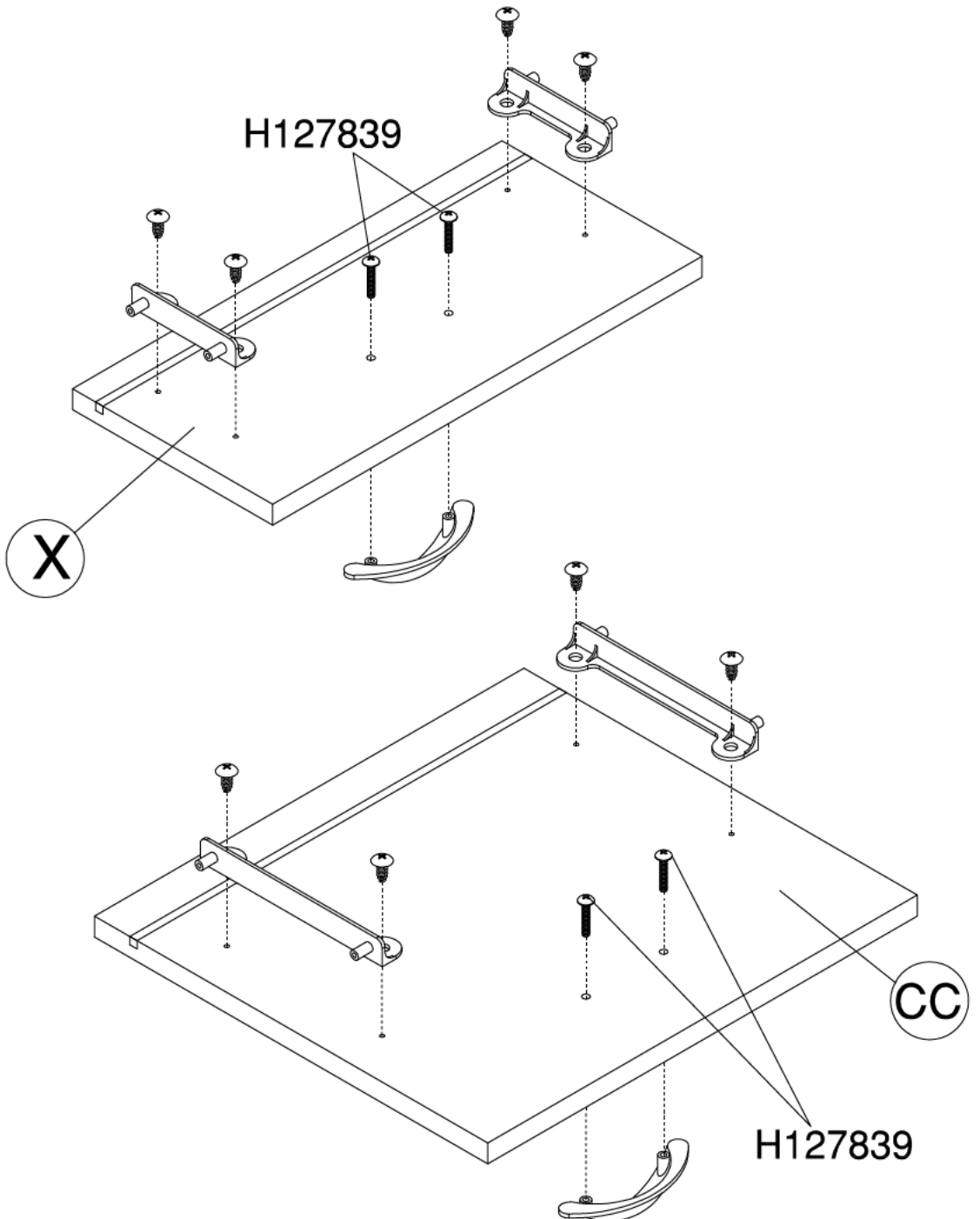


[2]

H175082

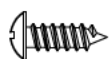


[2]

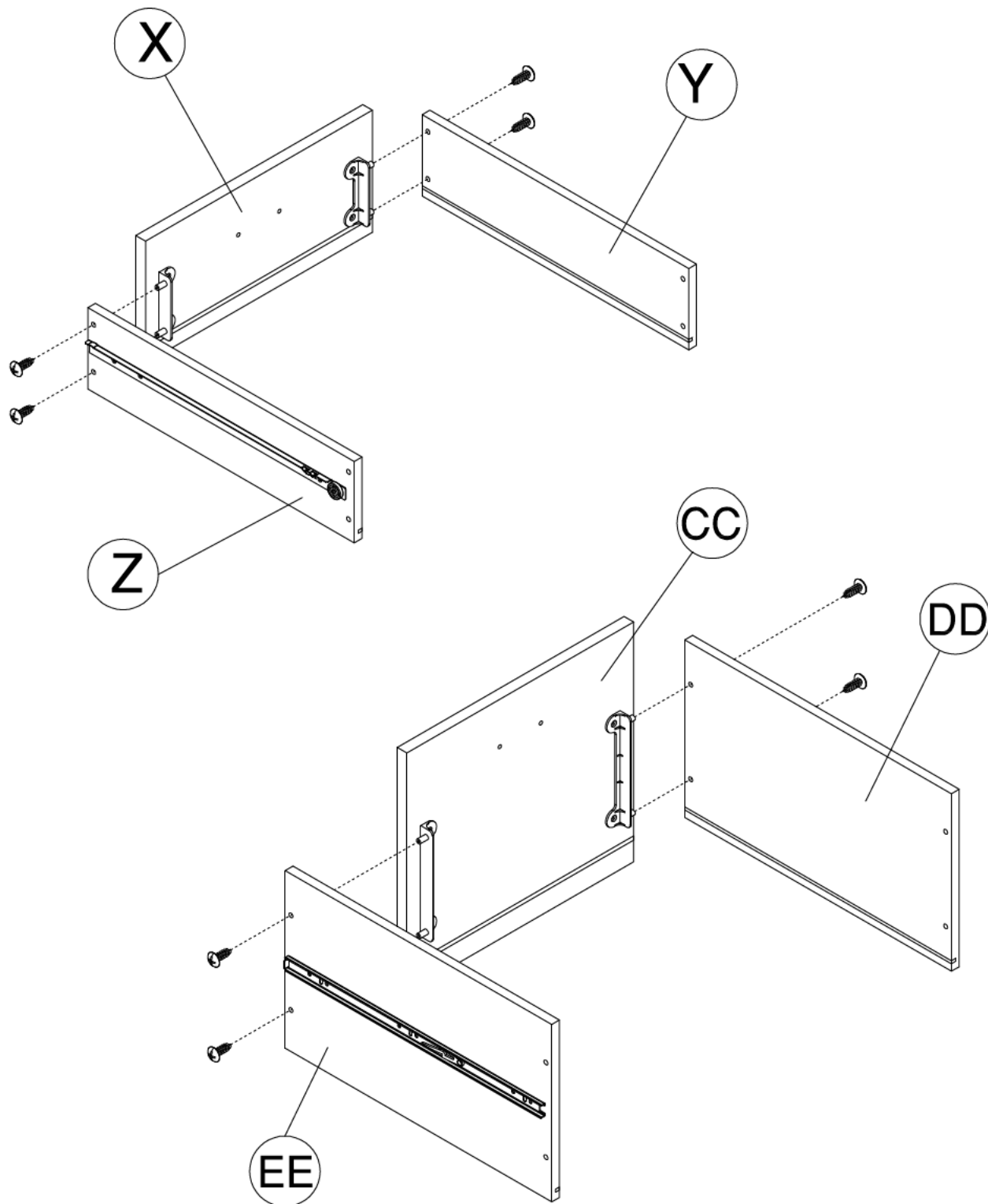


STEP 31

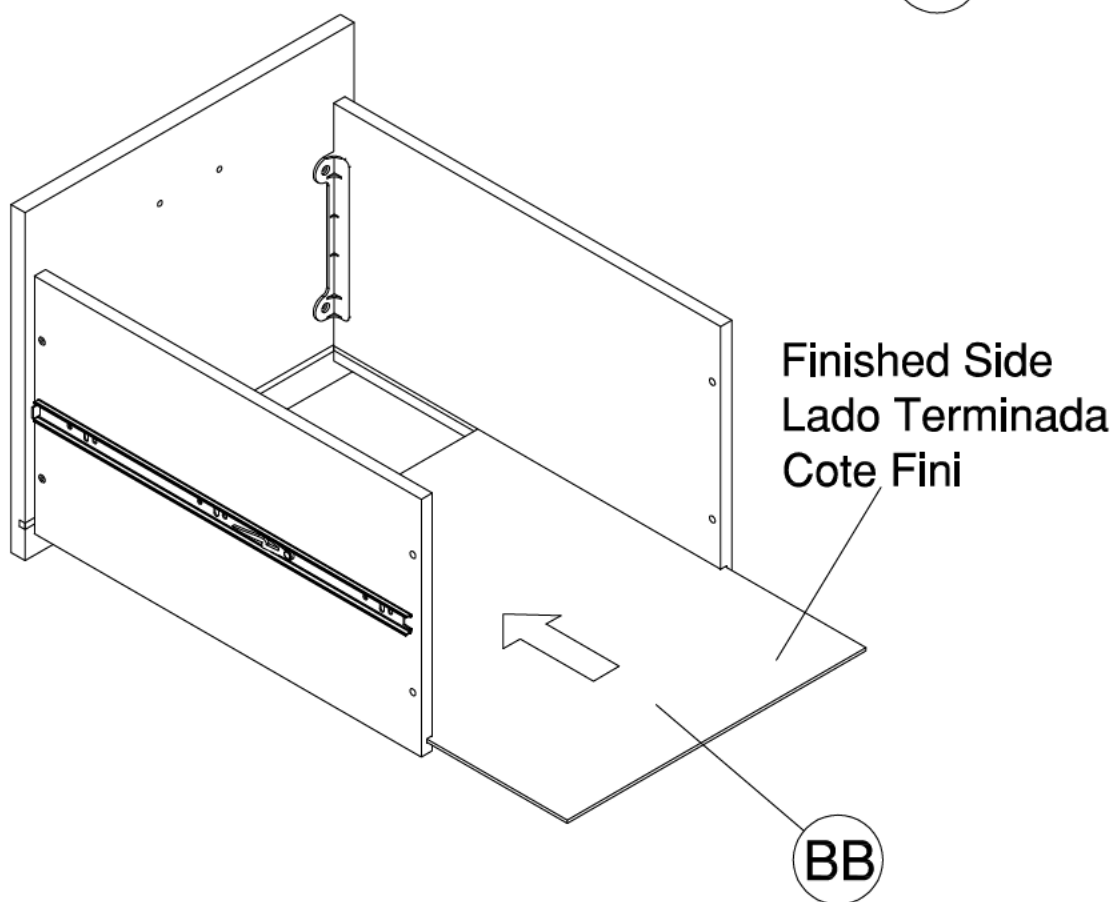
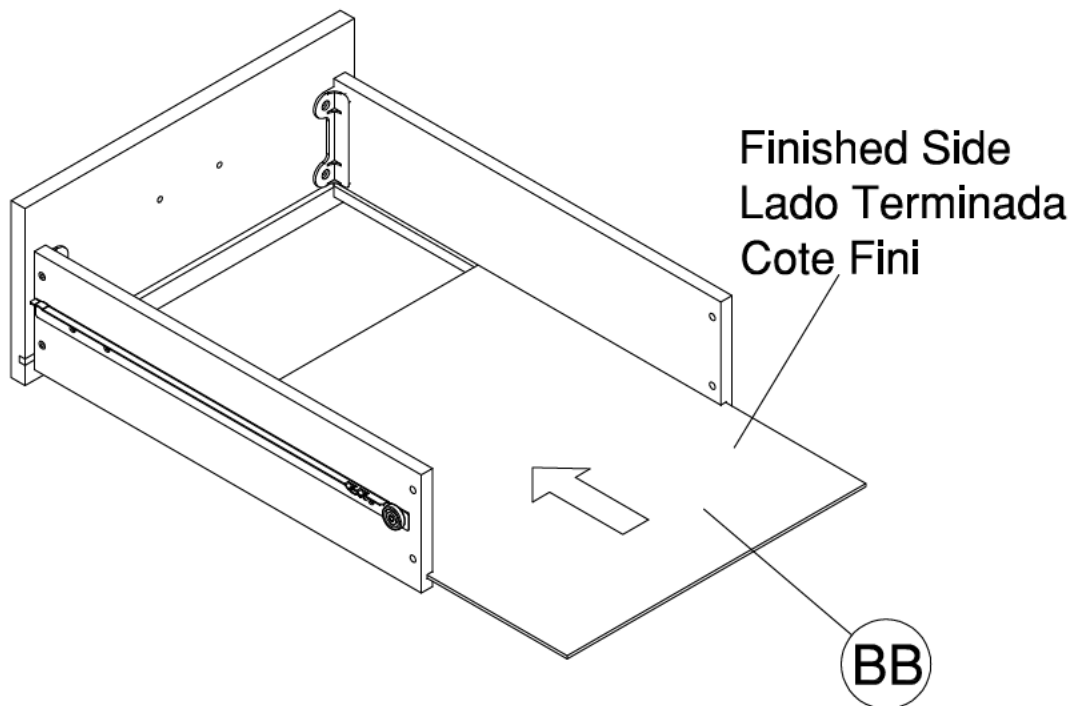
H101725



[8]

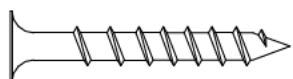


STEP 32



STEP 33

H23198

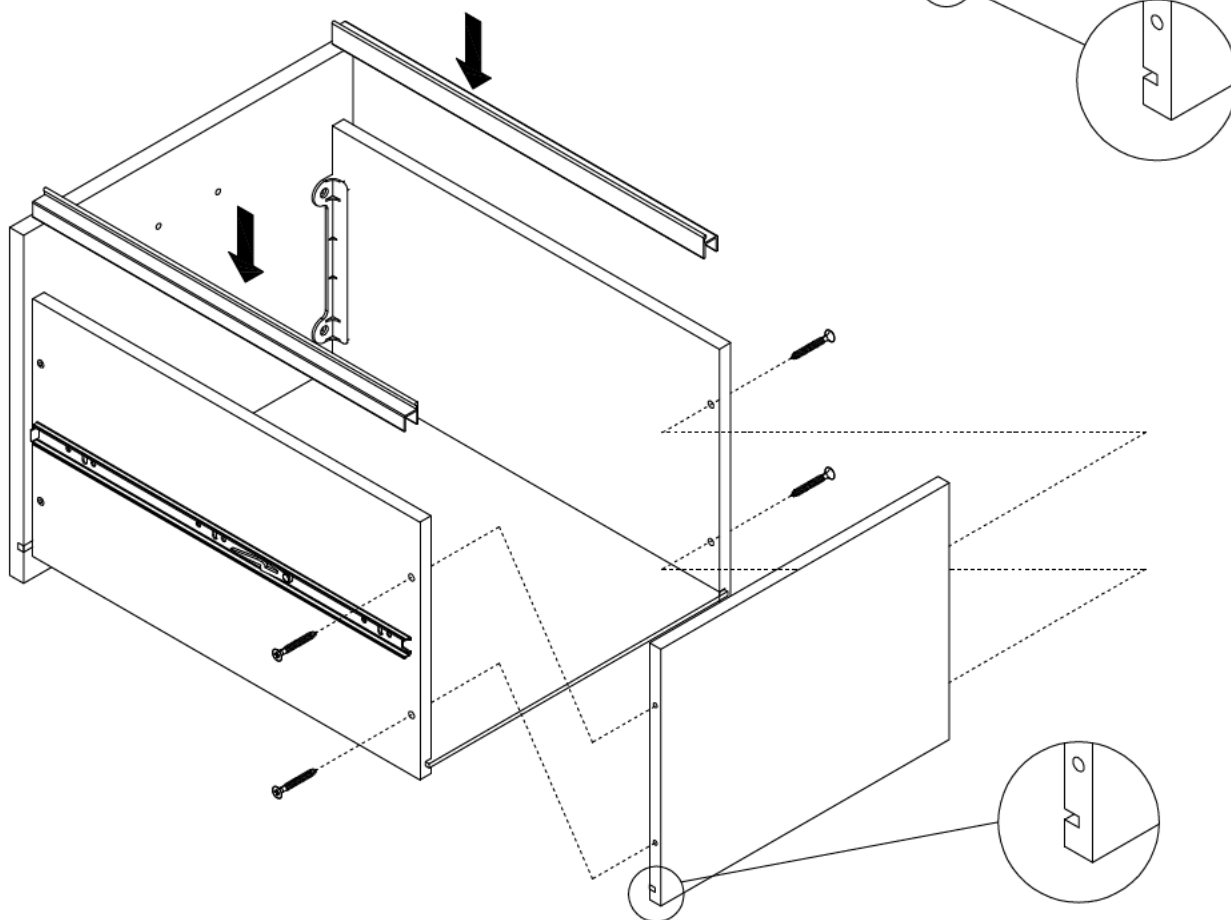
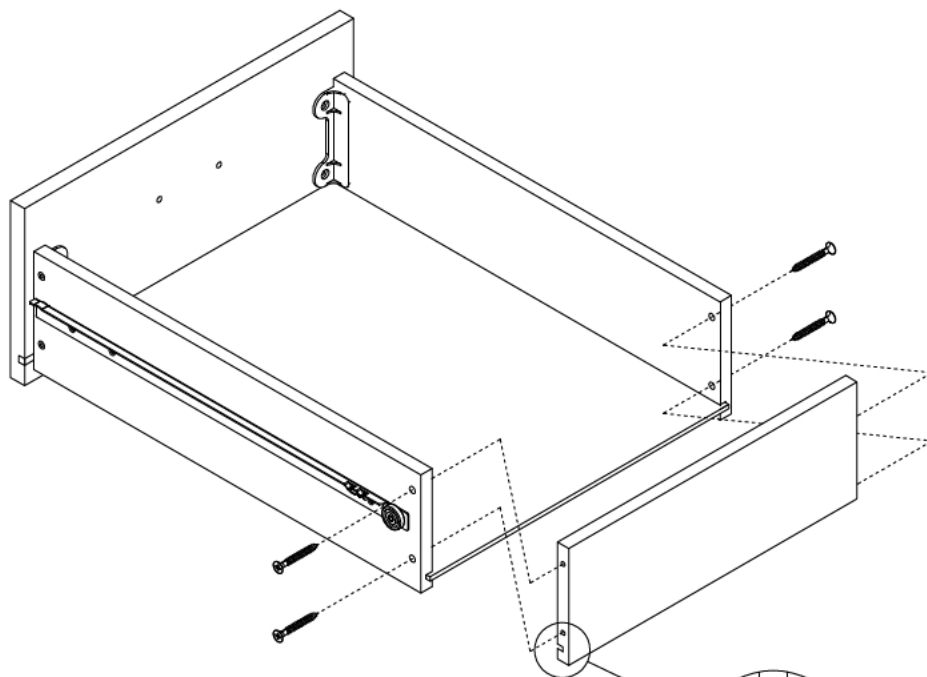


[8]

H174447



[2]

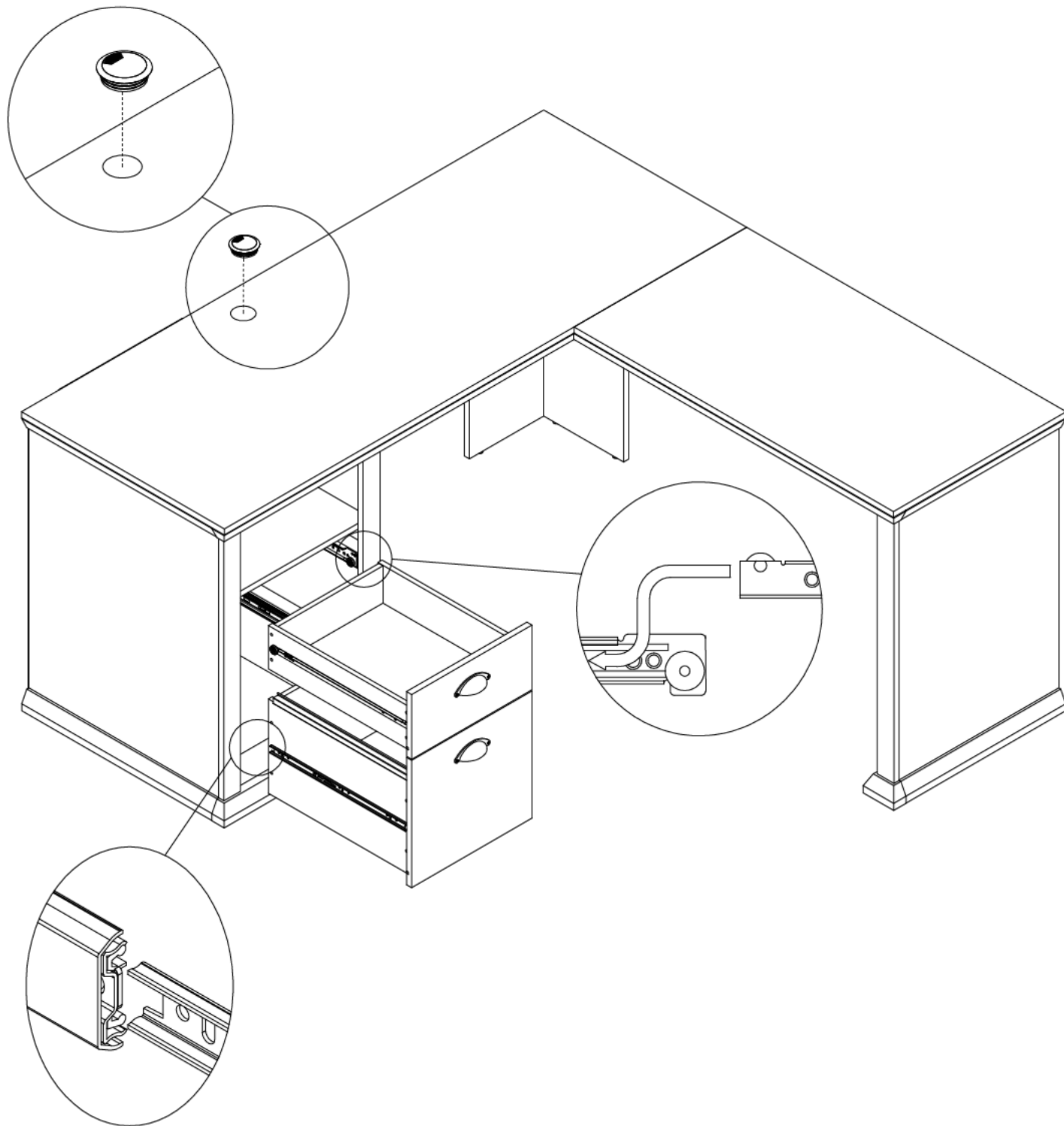


STEP 34

H170591



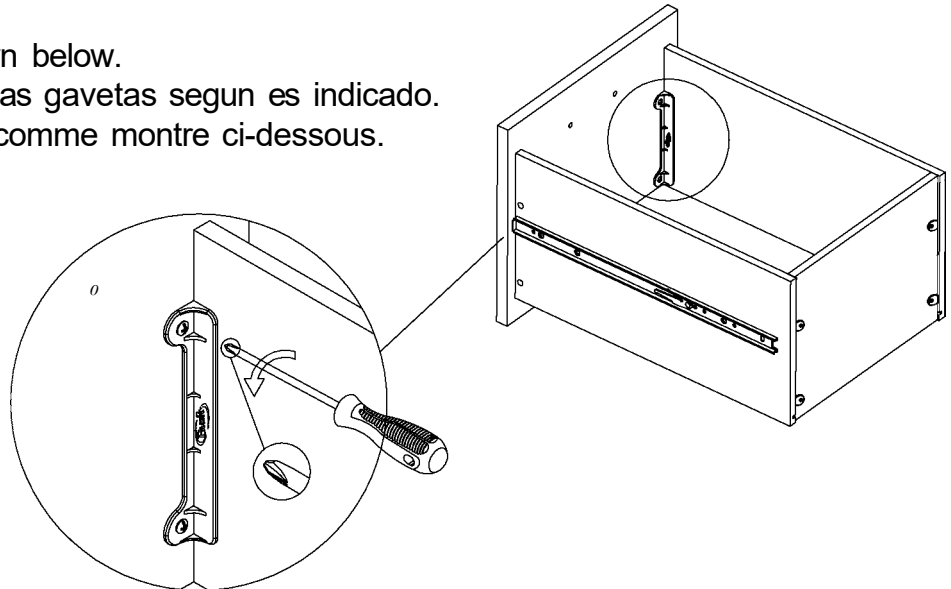
[1]



STEP 35

- Move unit to final location.
- Coloque esta unidad en su posición permanente.
- Déplacez l'unité dans l'endroit final.

- Adjust drawer fronts as shown below.
- Ajuste la parte delantera de las gavetas según es indicado.
- Ajustez les façades de tiroir comme montré ci-dessous.

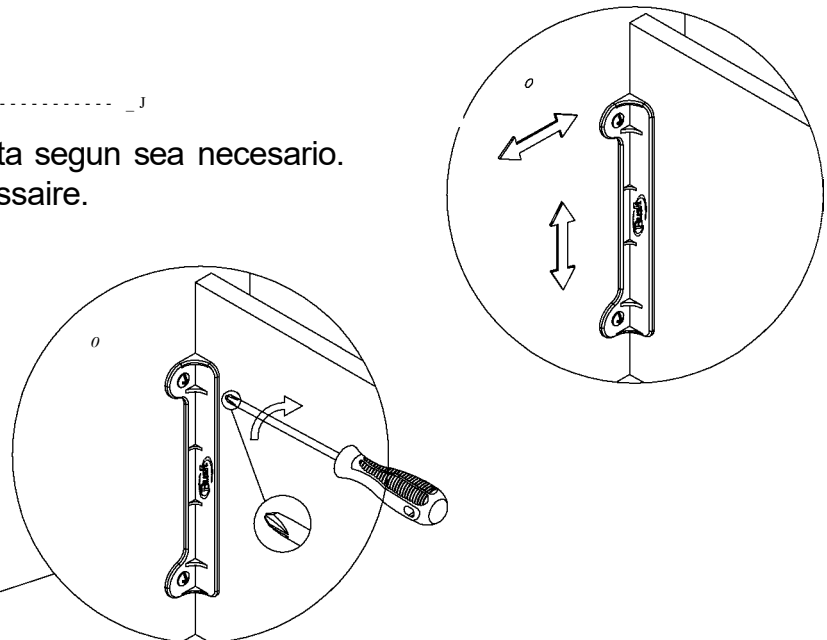


STEP 1.

- Loosen screws on back of drawer front brackets as shown.
- Afloje los tornillos en la parte trasera de la gaveta según es indicado.
- Desserrez les vis dans les appuis en plastique sur le dos de l'avant de tiroir comme montré.

STEP 2.

- Position drawer front as required.
- Ajuste la parte delantera de la gaveta según sea necesario.
- Placez l'avant de tiroir comme nécessaire.



STEP 3.

- Tighten screws while holding drawer front in position.
- Apriete los tornillos mientras sujeta la parte delantera de la gaveta en su posición permanente.
- Serrez les vis tout en tenant l'avant de tiroir en position.

IT'S AS EASY AS 1,2,3

Thank you for purchasing this

product. We trust that you will be completely satisfied with your product for many years to come.

Our products are backed by a 1-year warranty and crafted with today's styles in mind for the way you work.

Merci d'avoir acheté ce produit

Nous sommes sûr que vous serez complètement satisfait de votre meuble pendant de nombreuses années. Les produits sont garantis pendant 1 ans et sont conçus dans les styles actuels tout en gardant à l'esprit votre façon de travailler.

Gracias por comprar este producto

Confiamos en que usted estará completamente satisfecho con su mueble por muchos años. Los productos tienen 1 años de garantía y son diseñados con los estilos de hoy en mente para la manera que

Assembly tips:

1. Read the instructions and become familiar with the parts.
2. Ensure this carton contains all parts, fasteners and hardware.
3. To protect floors, assemble the furniture on the carton.
4. An assistant may be helpful.
5. Use of power tools is not recommended.

Conseils d'assemblage:

1. Lisez les instructions et familiarisez-vous avec les pièces.
2. Assurez-vous que le carton contient toutes les pièces, toutes les pièces de fixation et toute la quincaillerie.
3. Pour protéger vos sols, assemblez le meuble sur le carton.
4. Il peut être utile de vous faire aider.
5. L'utilisation d'outils électriques n'est pas recommandée.

Consejos de Ensamblaje:

1. Lea las instrucciones y familiarícese con las partes.
2. Asegúrese de que esta caja contenga todas las piezas, los sujetadores y el equipo.
3. Para proteger el piso, ensamble el mueble en el carton.
4. Un asistente puede serle útil.
5. El uso de herramientas eléctricas no se recomienda.

WARRANTY INFORMATION/INFORMATIONS POUR LA GARANTIE/INFORMACIÓN DE GARANTÍA

BUSH FURNITURE'S WRITTEN WARRANTY TO YOU

In order to provide you with timely assistance, please thoroughly inspect your furniture for missing or defective parts immediately after opening the carton. To receive replacement or missing parts under this warranty, call our

We warrant to you, the original purchaser, that our furniture and all its parts and components are free of defects in material or workmanship. "Defects," as used in this warranty, is defined as any imperfection which impairs the use of the furniture product.

Our warranty is expressly limited to the replacement of furniture parts and components. For one year after the date of purchase, Bush will replace any parts that are defective in material or workmanship.

This warranty applies under conditions of normal use. Our products are not intended for outdoor use. This warranty does not cover: 1) defects caused by improper assembly or disassembly; 2) defects occurring after purchase due to product modification, intentional damage, accident, misuse, abuse, negligence or exposure to the elements; and 3) labor or assembly costs.

IMPLIED WARRANTIES, INCLUDING THE WARRANTY OF MERCHANTABILITY, SHALL NOT EXTEND BEYOND THE DURATION OF THE WRITTEN WARRANTY STATED ABOVE, AND IN NO EVENT SHALL BUSH BE LIABLE FOR INCIDENTAL OR CONSEQUENTIAL DAMAGES RESULTING FROM USE OF THE PRODUCT.

Some states do not allow a limitation on how long an implied warranty lasts or the exclusion or limitation of incidental or consequential damages, so the above limitation and exclusion may not apply to you.

This warranty gives you specific legal rights. You may also have other rights that may vary from state to state.

VOTRE GARANTIE

Afin de vous assister rapidement, veuillez inspecter votre mobilier en détail immédiatement après l'ouverture du carton en cas de pièces manquantes ou défectueuses. Pour recevoir une pièce de rechange ou manquante couverte par cette garantie,

Nous vous garantissons, à vous l'acheteur original, que notre mobilier et toutes ses pièces et composants sont sans défaut de matériau ou de fabrication. Le terme "défauts" utilisé dans cette garantie, est défini comme étant toutes les imperfections qui compromettent l'utilisation du meuble.

Notre garantie est expressément limitée au remplacement des pièces et des composants du mobilier. Pendant un an après la date d'achat, Bush remplacera toute pièce défectueuse dans le matériau ou sa fabrication.

Cette garantie d'applique sous des conditions d'utilisation normale. Nos produits ne sont pas destinés à être utilisés en plein air. Cette garantie ne couvre pas: 1) les défauts causés par un mauvais assemblage ou démontage, 2) les défauts ayant lieu après l'achat et dus à la modification du produit, des dommages intentionnels, des accidents, une mauvaise utilisation, un mauvais traitement, la négligence ou l'exposition aux éléments, et 3) les frais de main d'œuvre ou d'assemblage.

LES GARANTIES TACITES, Y COMPRIS LA GARANTIE DE QUALITE MARCHANDE, NE S'ETENDRONT PAS AU-DELA DE LA DUREE ECRITE CITEE CI-DESSUS, ET BUSH NE SERA EN AUCUN CAS RESPONSABLE DES DOMMAGES ACCESSOIRES OU INDIRECTS RESULTANT DE L'UTILISATION DU PRODUIT. Certains états ne permettent pas d'appliquer une limite à la durée de la garantie tacite, ni une exclusion ou limitation des dommages accessoires ou indirects; dans ce cas les limitations ou exclusion ci-dessus peuvent ne pas s'appliquer à vous.

Cette garantie vous donne des droits légaux spécifiques. Il se peut que vous ayez également d'autres droits qui peuvent varier d'un état à l'autre.

GARANTIA ESCRITA DE PARA USTED

Para brindarle asistencia oportuna, por favor, verifique detalladamente que a su mueble no le falte o tenga piezas defectuosas inmediatamente después de abrir la caja. Para recibir un reemplazo o la parte faltante bajo esta garantía, llame a nuestro Departamento de Servicio al Consumidor

Le garantizamos a usted, el comprador original, que nuestros muebles sus partes y componentes están libres de defectos en materiales o trabajo. "Defectos", según se usa en esta garantía, se define como una imperfección que perjudica el uso del producto mobiliario.

Nuestra garantía se limita expresamente al reemplazo de partes y componentes mobiliarios. Durante uno año después de la fecha de compra, Bush reemplazará cualquier parte defectuosa en material o trabajo.

Esta garantía se aplica bajo condiciones de uso normal. Nuestros productos no son para uso en exteriores. Esta garantía no cubre: 1) defectos causados por un ensamblaje

o desensamblaje inadecuado; 2) defectos que ocurran después de la compra debido a modificación del producto, daño intencional, accidente, mal uso, abuso, negligencia o exposición a los elementos; y 3) costos de trabajo o ensamblaje.

LAS GARANTÍAS IMPLICADAS, INCLUYENDO LA GARANTÍA DE COMERCIABILIDAD, NO SE EXTENDERÁN MÁS ALLÁ DE LA DURACIÓN DE LA GARANTÍA ESCRITA MENCIONADA, Y EN NINGÚN CASO BUSH SERÁ RESPONSABLE POR DAÑOS INCIDENTALES O CONSIGUIENTES COMO RESULTADO DEL USO DEL PRODUCTO. Algunos estados no permiten una limitación sobre el tiempo de duración de la garantía implicada o la exclusión o limitación de daños incidentales o consiguientes, de manera que la limitación y exclusión mencionadas pueden no aplicarse para usted.

Esta garantía le otorga derechos legales específicos. Puede también tener otros derechos que pueden variar según los estados.

1-Year
Manufacturer's
Warranty