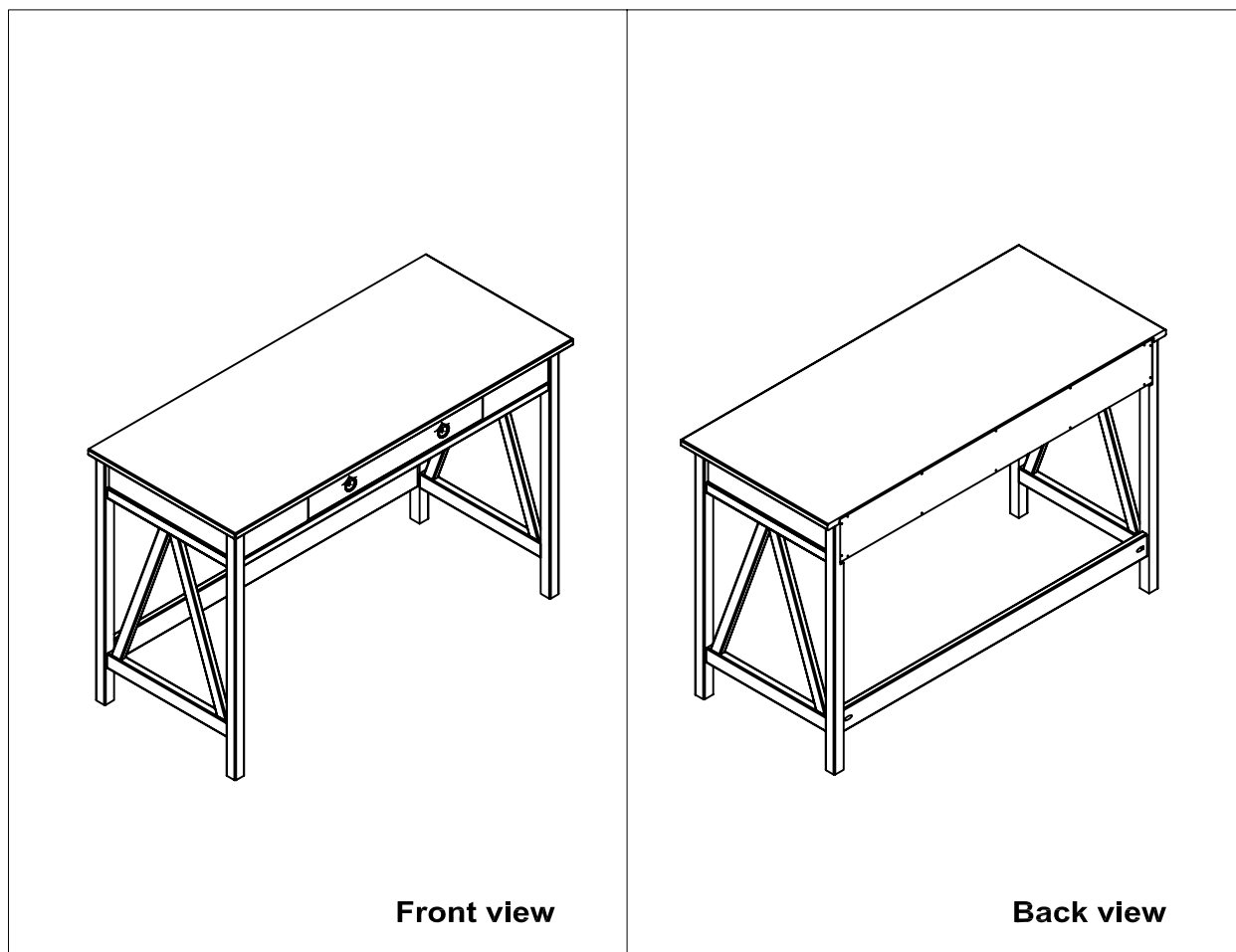


# ASSEMBLY INSTRUCTIONS

## DESK



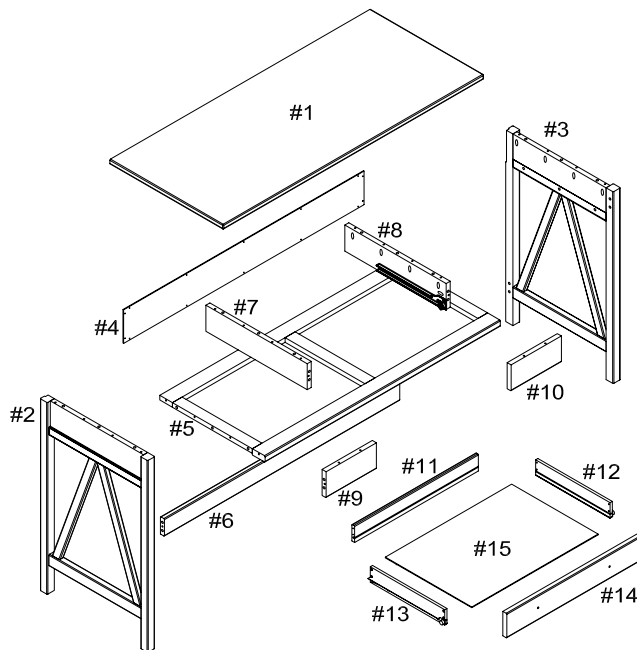
### We are here to help!

We do our best to insure that your furniture arrives in excellent condition. In the event that a part is damaged or missing, We will be happy to provide you with replacement parts, at no charge, within 30 days of purchase, providing the parts are available in our warehouse and the item purchased is part of our current inventory. In order to receive spare parts, at no charge, you must provide proof of purchase within 30 days.

If you need assistance with assembly or replacement parts, please call our Customer Service, prior to returning the item to the store.

# PARTS IDENTIFICATION

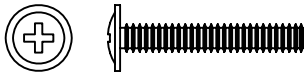

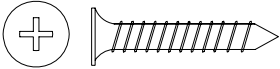
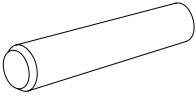
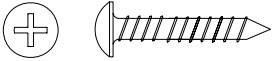
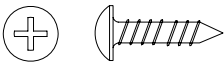
ITEM	DESCRIPTION	QTY
#1	TOP PANEL	01
#2	LEFT SIDE	01
#3	RIGHT SIDE	01
#4	BACK PANEL	01
#5	BOTTOM FRAME	01
#6	BACK RAIL	01
#7	LEFT VERTICAL BOARD	01
#8	RIGHT VERTICAL BOARD	01
#9	LEFT CROSS BAR	01
#10	RIGHT CROSS BAR	01
#11	DRAWER FRONT	01
#12	LEFT DRAWER SIDE	01
#13	RIGHT DRAWER SIDE	01
#14	DRAWER BACK	01
#15	DRAWER BOTTOM	01



For ease of identification all parts are labeled to correspond to the Step number in which the part is used.

If any parts are missing or damaged in this package, we will be happy to provide you with replacement parts, at no charge, within 30 days of purchase, providing the parts are available in our warehouse and the item purchased is part of our current inventory. In order to receive spare parts, at no charge, you must provide proof of purchase within 30 days.

Please line up the hardware with the correct full size image to make sure you are installing the hardware correctly.

ITEM	PICTURE	DESCRIPTION	QTY
A		(Ø4) Not to Scale	LARGE BOLT 02
B		Not to Scale	KNOB 02
C		(Ø3.5x25mm) Not to Scale	SCREW 08
D		(Ø8x30mm) Full Size	WOOD DOWEL 30
E		(Ø4x30mm) Full Size	SCREW 42
F		(Ø3x15mm) Full Size	SCREW 14

Tools required



Long screwdriver

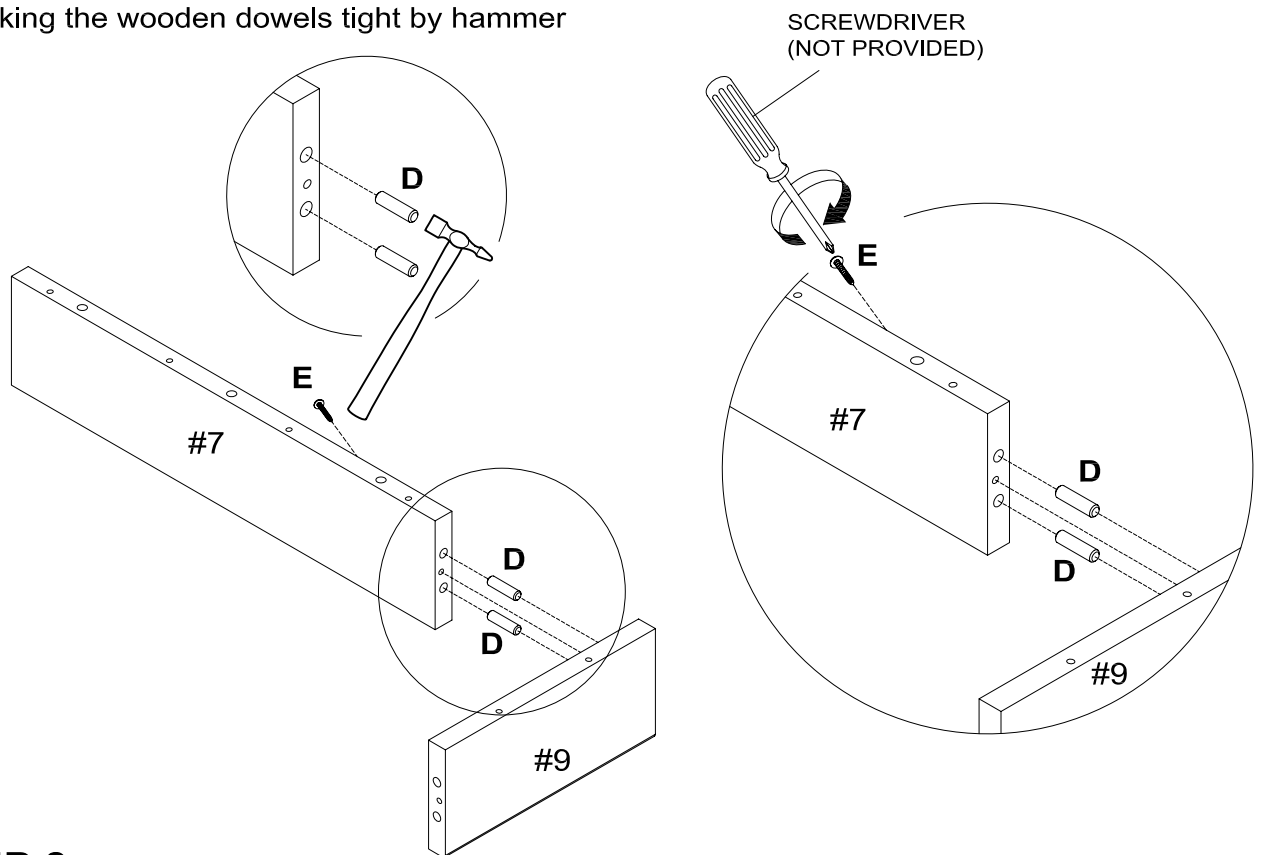


Small  
hammer

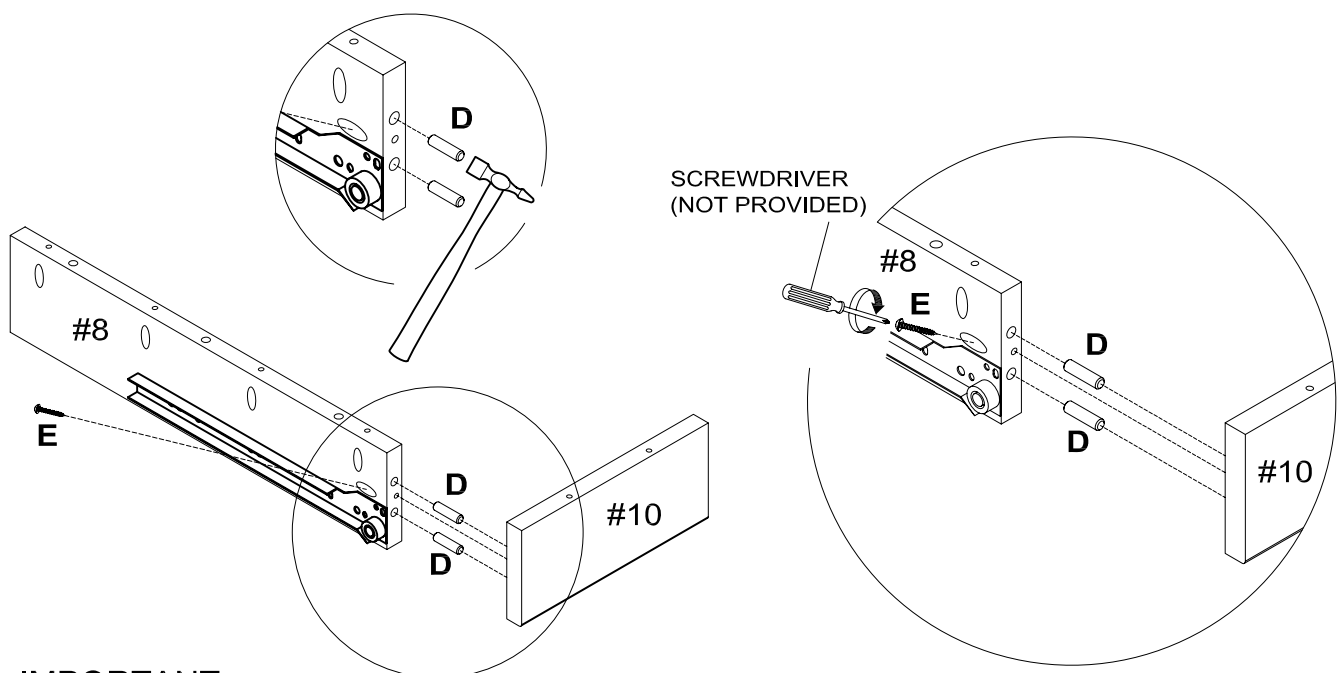
If any parts are missing or damaged in this package, we will be happy to provide you with replacement parts, at no charge, within 30 days of purchase, providing the parts are available in our warehouse and the item purchased is part of our current inventory. In order to receive spare parts, at no charge, you must provide proof of purchase within 30 days.

**STEP 1.**

knocking the wooden dowels tight by hammer

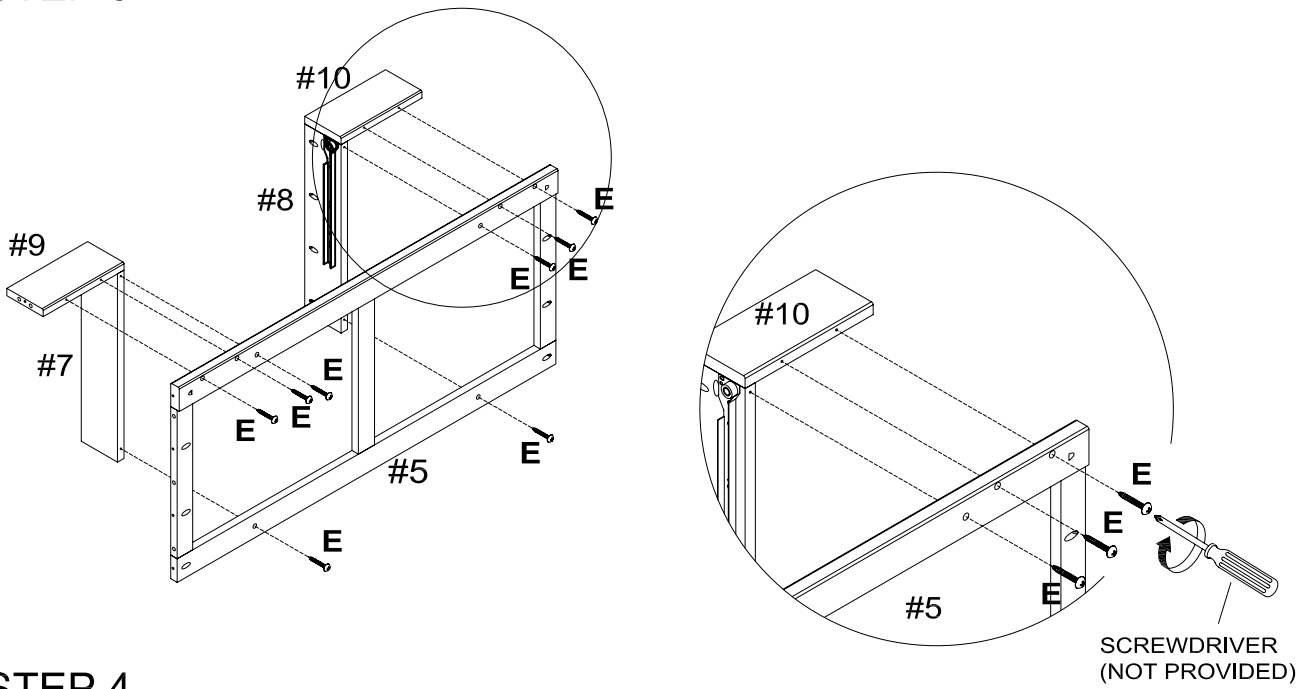
**STEP 2.**

knocking the wooden dowels tight by hammer

**IMPORTANT:**

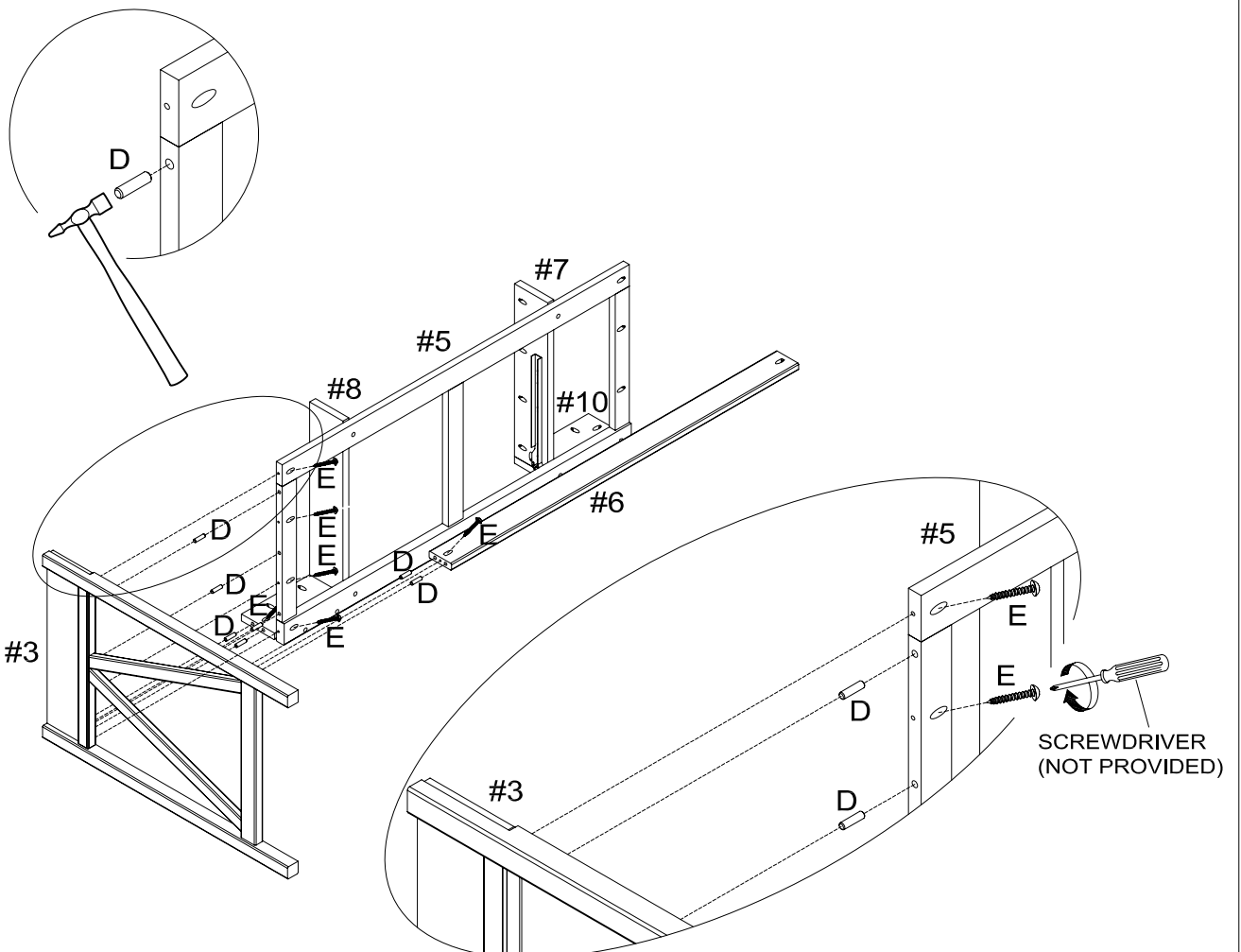
1. DO NOT TIGHTEN BOLTS COMPLETELY UNTIL ALL BOLTS ARE COMPLETELY LINED UP AND INSERTED INTO HOLES / NUTS.
2. DO NOT OVER TIGHTEN SCREWS AND BOLTS TO AVOID STRIPPING.

### STEP 3.



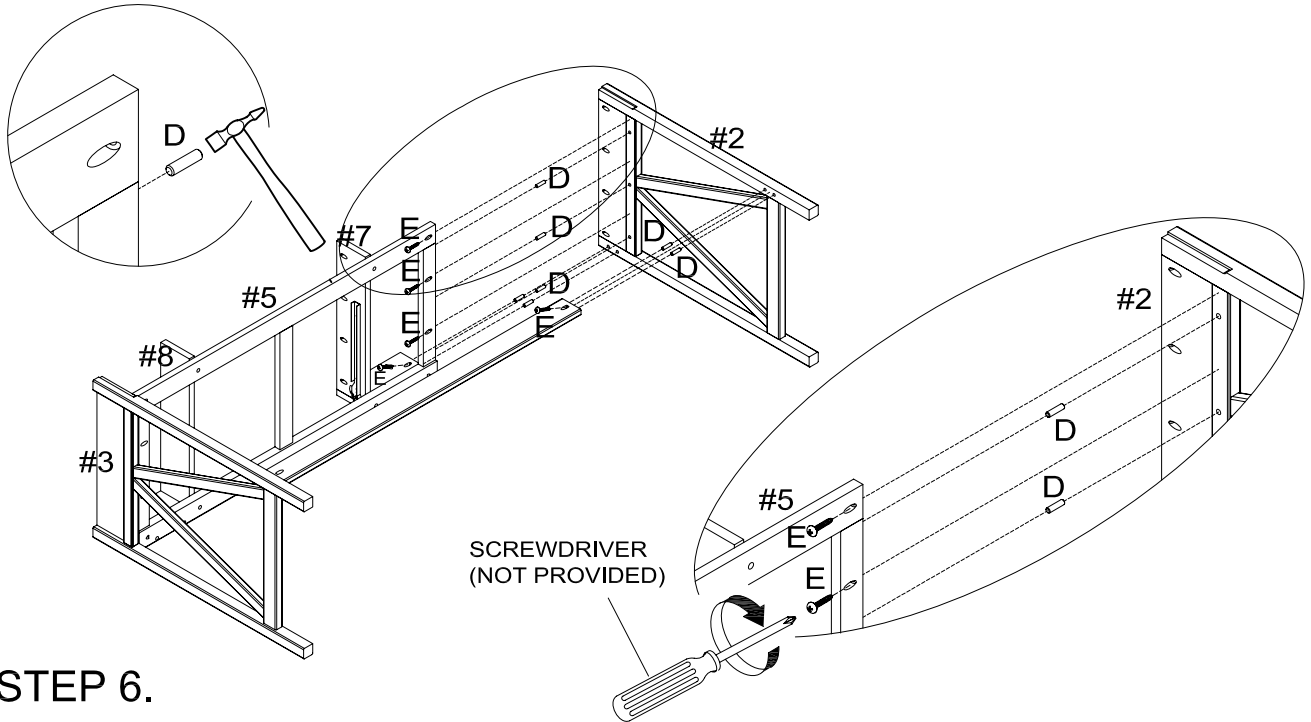
### STEP 4.

knocking the wooden dowels tight by hammer



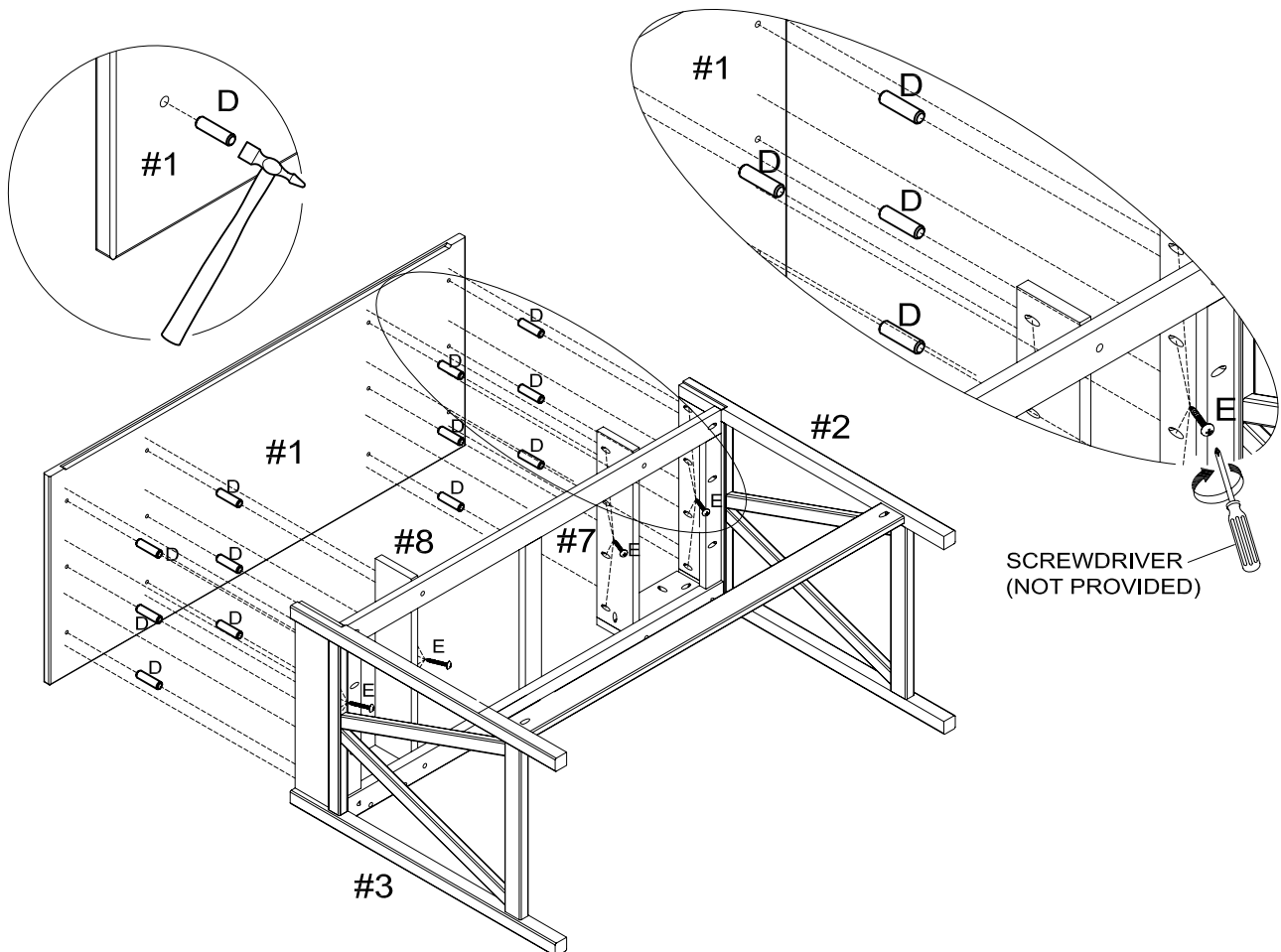
### STEP 5.

knocking the wooden dowels tight by hammer

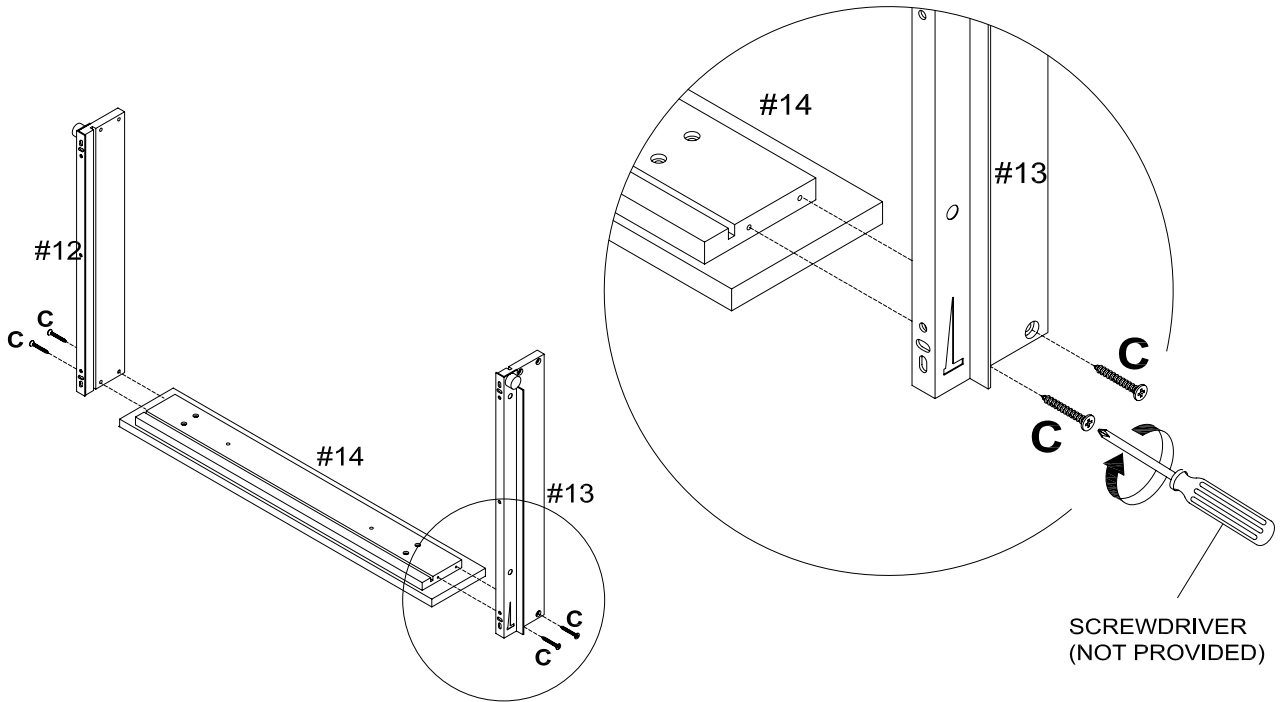


### STEP 6.

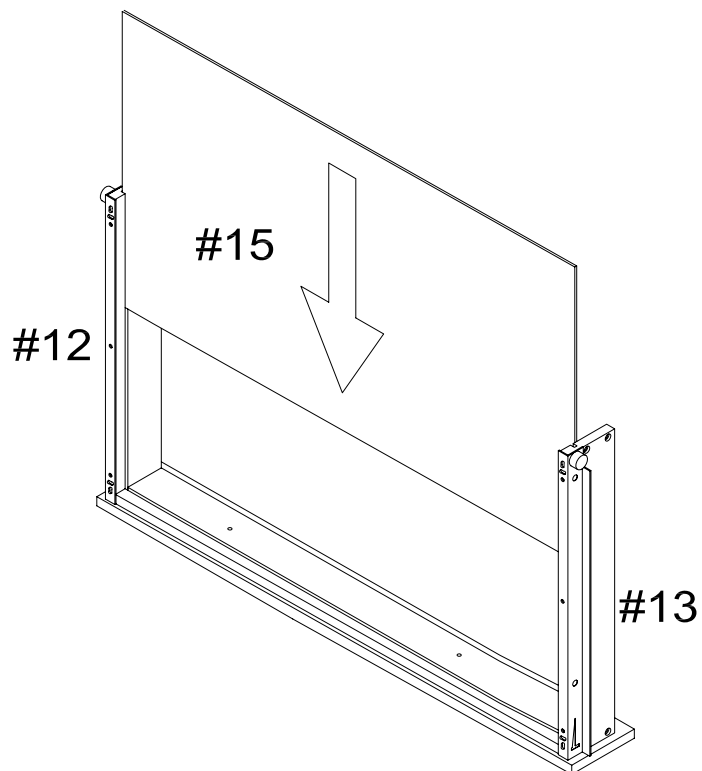
knocking the wooden dowels tight by hammer



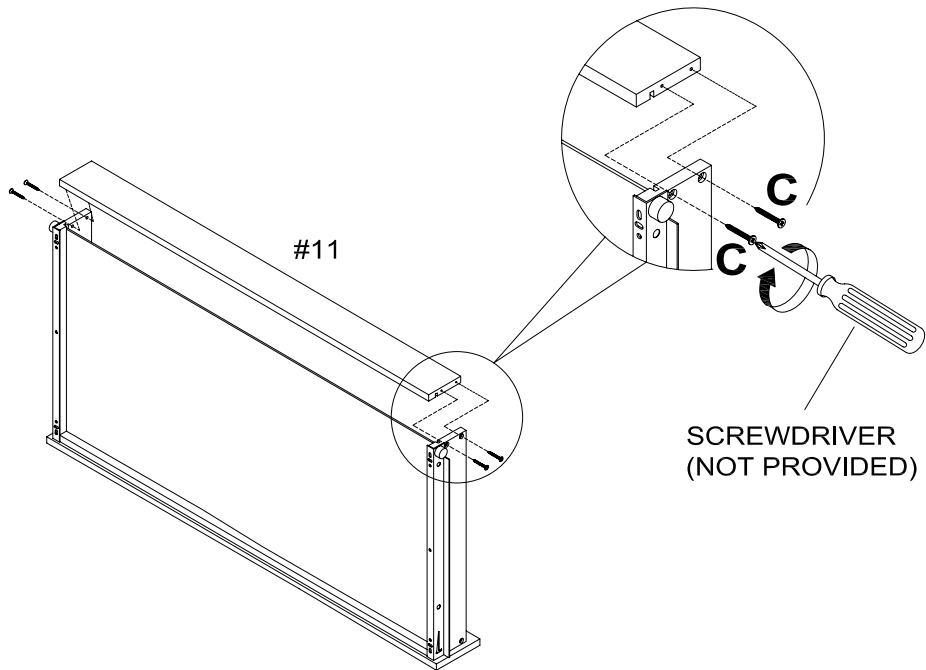
STEP 7.



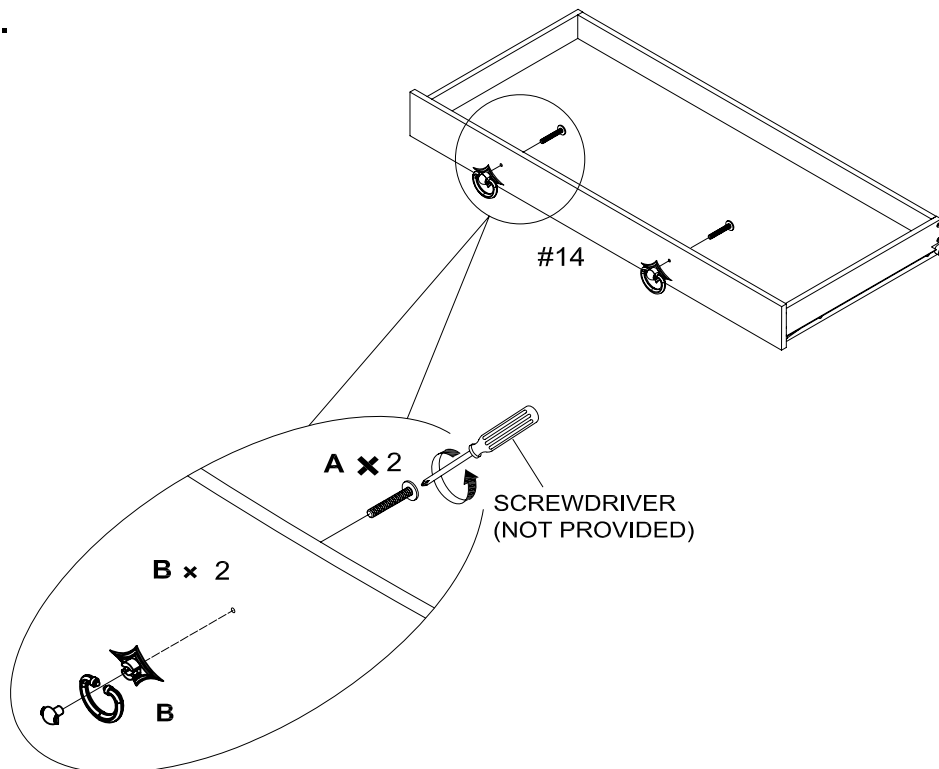
STEP 8.



STEP 9.

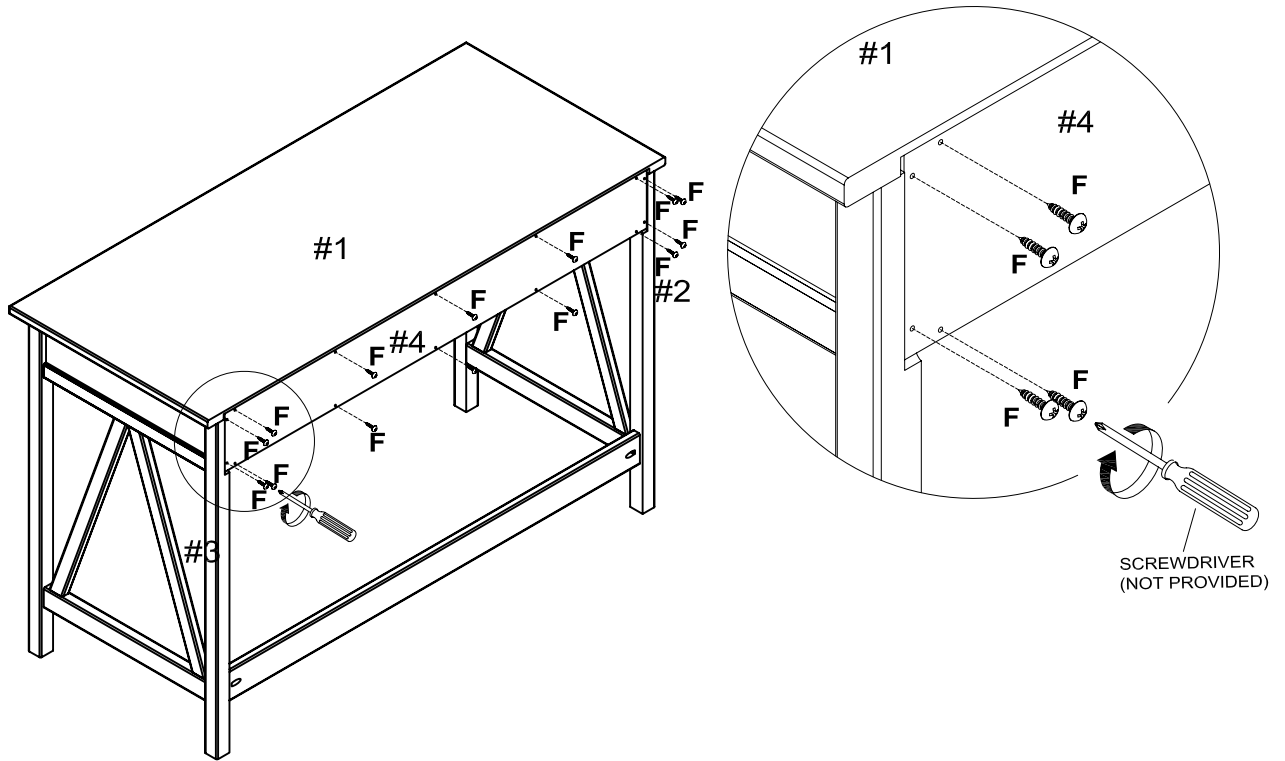


STEP 10.

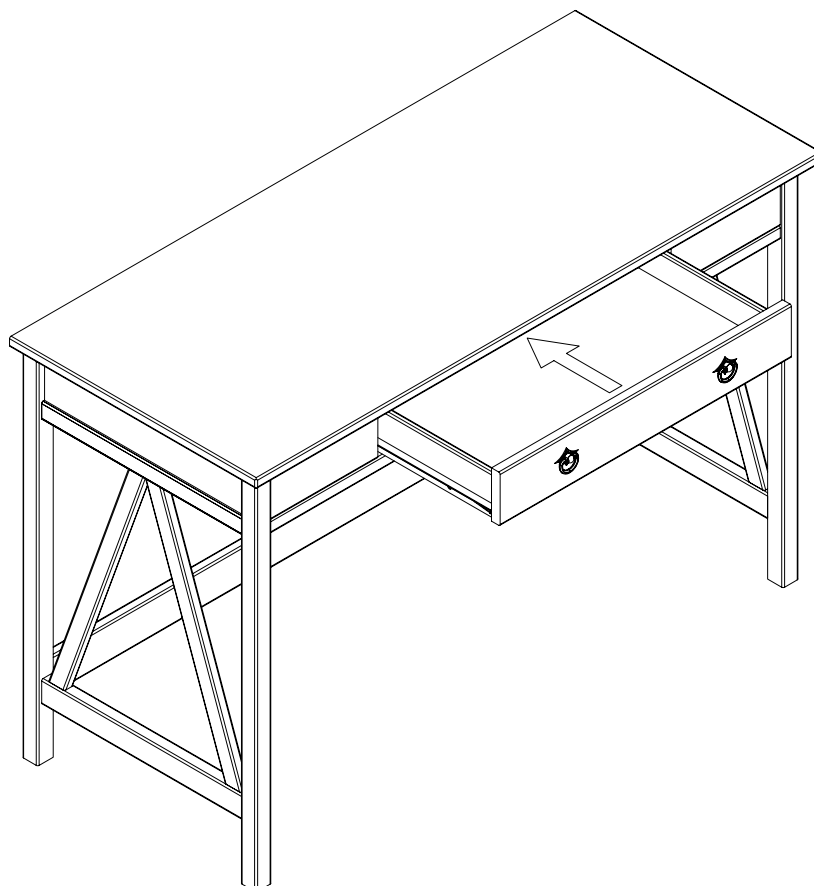




STEP 11.



STEP 12.



## **LIMITED 6 MONTHS WARRANTY**

### **WHAT IS COVERED**

This product is covered under our manufacturer's 6 months limited warranty. To ensure your complete satisfaction, this warrants to the original purchaser that our supplied item is free from defects in material and workmanship, as of the date of purchase, and that it will, under normal use and proper care, remain so for six months after the date of purchase.

Replacement of missing or initially defective parts will be sent, at no charge, for a period of 30 days from the date of purchase with valid proof of purchase providing the parts are available in our warehouse and the item purchased is part of our current inventory.

### **WHAT IS NOT COVERED**

It remains the customer's responsibility for freight and packaging charges to and from the customer service center. Labor and material charges to remove or replace parts under this warranty are not covered.

This warranty does not cover: Furniture used for commercial purposes, failures caused by improper installation assembly or by improper care, unreasonable or abusive use, freeze damage, acts of God, rust, purchased parts or return freight and packaging charges. Proof of purchase (dated register receipt) is required for warranty claims.