

ASSEMBLY INSTRUCTIONS

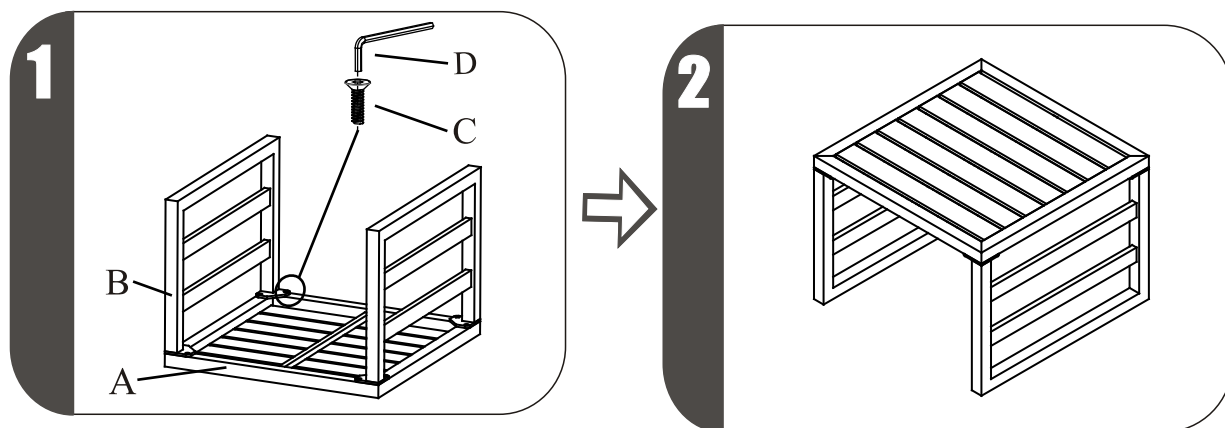
ATTENTION:

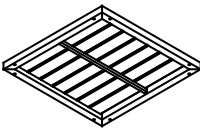
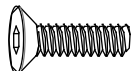
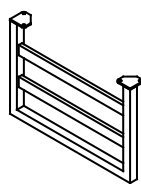

1. Please read these instructions carefully before assembly.
2. Aluminum is a soft metal and over tightening may strip the thread or break the part.
3. DO NOT use power tools.

Assembly steps:

1. Turn the table top (A) upside down on the soft clean surface. Loosely attach the table leg (B) to the table top with bolts (C).
2. Tighten all the bolts and nuts completely. DO NOT over tighten.
3. Turn the table on to its legs and adjust the foot cap to level the table.

Warning: DO NOT use acid or alkaline washing liquid to clean the product.



| Parts list | Parts picture | Description | Q'ty | Parts list | Parts picture | Description | Q'ty |
|------------|---|-------------|------|------------|---|-------------|------|
| A |  | Table top | 1 | C |  (M6*18) | Bolt | 8 |
| B |  | Table leg | 2 | D |  | Wrench | 1 |