



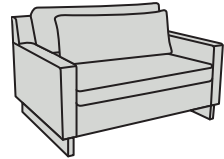


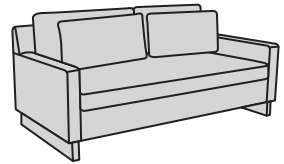
ASSEMBLY INSTRUCTIONS SLEEPER SOFA 76"

HARDWARE LIST			
A		LEGS 36 1/4", 5 1/8", 1 9/16"	2
B		BOLTS 5/16" x 4"	4
C		WASHERS 11/32", 11/16", 1/16"	4
D		ALLEN KEY 1/4"	1

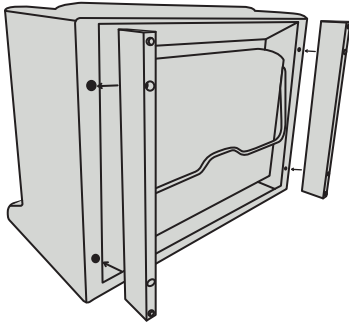
Sleeper Chair
legs should be
facing this way



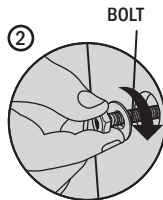
Sleeper Sofa
legs should be
facing this way



SLEEPERS



②



- ① Lay furniture on its back, then place legs as shown in figure 1.
- ② Secure leg in pre drilled holes with 2 bolts provided.
- ③ Using Allen key, tight bolts to main body.