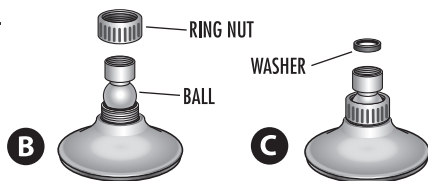
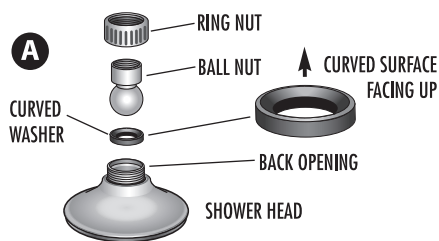


# AQUASPA® 3-way Shower



## To Assemble Shower Head if Disassembled

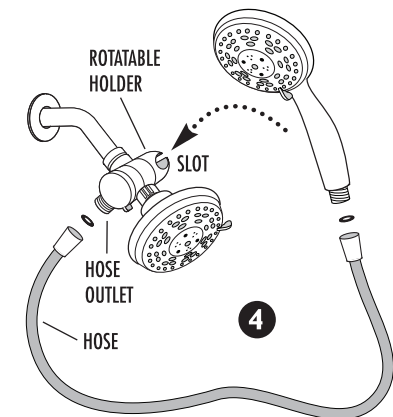
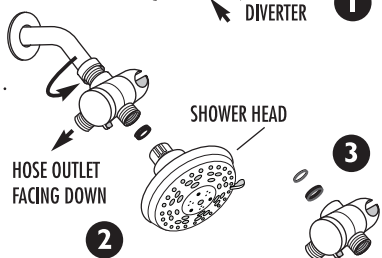
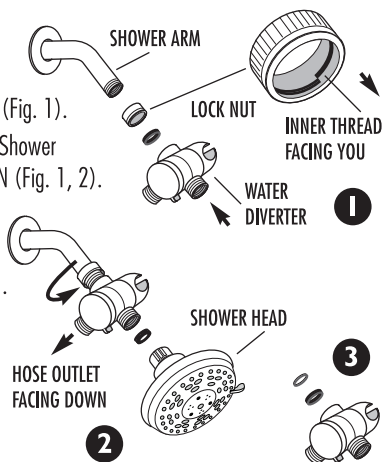
1. Unscrew Ring Nut (Fig. A) and place Curved Washer into Back Opening with curved surface facing UP.
2. Stand Ball Nut on top of Curved Washer with Ball pressing against its curved surface ( Fig. A, B).
3. Slide threaded Ring Nut over Ball Nut (Fig. B), then screw it back onto outer thread of Back Opening and hand-tighten (Fig. C). Check Washer inside Ball Nut.

## IMPORTANT! Hand tighten ONLY all connections.

**DO NOT** use wrench or pliers. **DO NOT** overtighten - this may cause washer to bend and be pushed into shower arm. If needed, use plumber's tape **ONLY** on shower arm thread if washers fail to stop leakage. **DO NOT** use plumber's tape on any other connections.

## To Connect

1. Remove old shower head. Screw Lock Nut, with single Inner Thread facing YOU, onto shower arm to end of its thread, but **DO NOT** tighten (Fig. 1).
2. Screw Water Diverter with Thick Washer (may be already inside) onto Shower Arm stopping at last possible position when Hose Outlet is facing DOWN (Fig. 1, 2).
3. Counter-tighten Lock Nut in reverse direction, until it presses tightly against Diverter, thereby locking it in this position.
4. Screw Shower Head with its Washer in place onto Front Outlet (Fig. 2).
5. Turn ON water to test connection. If leakage occurs, disconnect Diverter and add Thin Washer (spare) to Thick Washer already inside its neck (Fig. 3), then reconnect and test again.



## If Leakage Occurs Due to Short Shower Arm Threads, DO NOT Use Lock Nut

To stop leakage, your Shower Arm end must always reach Washer inside Diverter and press against it. If your Shower Arm with Lock Nut on it does not have enough threads to reach Thick Washer inside Diverter, remove Lock Nut and **DO NOT** use it. Add Thin Washer to Thick Washer, if needed, for better alignment (Thin Washer compensates for about 1/2 thread turn).

6. Screw one Hose nut with Medium Washer in place onto Hose Outlet (Fig. 4). Screw other Hose nut with Medium Washer in place onto Hand Shower handle and place Hand Shower into wider Slot of Rotatable Holder (rotate holder to place Slot on TOP, if needed).

**NOTE:** If your shower arm has a ball on the end of it instead of thread, it will not work with this shower unit and will need to be replaced with a standard shower arm available at most plumbing supply stores.