

caracole



PURRR-FECT

uph-418-036-a

COLLECTION: Caracole Upholstery

DIMENSIONS: 28.5W x 29D x 47.5H

AVAILABLE IN CARACOLE COUTURE CUSTOM UPHOLSTERY PROGRAM This sculptural modern wing chair, with its statuesque tall back, is distinguished by its wide, squared-off upholstered top rail that swoops down the sides to low arms. The shimmering ivory velvet on the inside is complemented on the outside by a cut velvet that showcases dressy swirls of cream. Its square-tapered front legs and graceful sabre rear legs make this chair a real beauty.

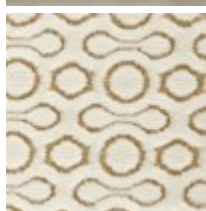
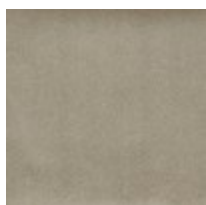
CONSTRUCTION: Plush poly foam cushion.

FINISH:



Ivory

FABRIC:



Body Fabric:
Inside 2613-
35CC, Outarm,
Outback 8119-
34CC