

# The Craftsman Playhouse



## Tools Needed:

- Cordless Drill (12V or higher)
- #2 Square Drive Bit
- Hammer
- 6' Step Ladder
- Tape Measure
- Square utility knife  
w/ blade & hook blade
- Speed Square



**Little Cottage Co.**®  
**PO Box 455**  
**Berlin, OH 44610**  
**330-893-4212**  
**[www.cottagekits.com](http://www.cottagekits.com)**

**© 2015 Little Cottage Co.**

# The Craftsman Playhouse



1



Locate 4x4s and space as shown on floor layout.

2



2x4 rim boards will be marked at 16" o.c. for floor joists. Fasten rim to joists using (2) 2 1/2" screws.

3



After 2x4 frame is assembled fasten frame to 4x4 with 2 1/2" screws. The 4x4s on the ends need to be set in 1" as shown, see floor layout.

4



Continue fastening rim to outside 4x4s 1" in.

5



Measure and mark for 4x4, refer to floor drawings.

6



Screw end joist to center 4x4 at an angle.

# The Craftsman Playhouse



7



Measure corner to corner to square the floor frame. Move floor accordingly until it measures the same.

8



Toe screw the remainder joists to 4x4s.

9



Lay flooring on 2x4 frame.

10



Make sure flooring is flush each way before fastening with 1 1/4" screws.

11



Fasten every 8-10".

12



Begin setting walls on floor starting with wall panel, A.

# The Craftsman Playhouse



13



Make sure wall is flush on end and side, fasten wall to floor using 2 1/2" screws 12" - 16" o.c.

14



Continue with walls.

15



Be sure to measure 20" for child door opening.

16



This picture shows wall panel B being installed. B panel will vary by playhouse size.

17



Using 2 1/2" screws, connect all walls on the inside.

18



Continue setting walls, refer to wall layout.



# The Craftsman Playhouse



19



20



Walls should be flush on inside.

21



Set all end walls per drawing.

22



Make sure corners are tight together before fastening, with 2 1/2" screws.

23



Lay the gable panels face down, make sure the framing is flush and connect using 2 1/2" screws.

24



Gable is ready to set.

# The Craftsman Playhouse



25



Set gable on top of the wall.

26



Make sure the framing is flush, then fasten using 2 1/2" screws.

27



Connect the second gable.

28



Set on top of wall.

29



Measure 5 1/2" to the inside of the wall.

30



Fasten gable to wall using 2 1/2" screws.

# The Craftsman Playhouse



31



Locate 2x6 top plates for back wall.

32



Set top plates on top of back wall.

33



Using 2 1/2" screws fasten top plates to wall. Top plates need to be flush with inside wall framing.

34



Locate 2x3 top plate for front wall.

35



Fasten to wall using 2 1/2" screws.

36



Locate (3) 36" 2x3 door braces.



# The Craftsman Playhouse



37



Fasten one above door.

38



And one on each side for support.

39



Locate all roof trusses, front trusses and back trusses are different. Compare to gables. Do not use rear truss. Front (2) trusses are marked for T-bar.

40



Truss on each side of dormer will be double.

41



Fasten gusset on each side of truss using 1 1/4" screws.

42



Trusses are ready to be set on walls.



# The Craftsman Playhouse



43



Front wall.

44



Back wall. Fasten using (3) 2 1/2" screws.

45



Trusses are in place.

46



Locate and fasten double 2x3 T-bar where marked on trusses, with 2 1/2" screws.

47



Fasten short rafter on front wall and double T-bar. Fasten ridge T-bar using 2 1/2" screws.

48



Install rear rafter where marked using 2 1/2" screws.

# The Craftsman Playhouse



49



Locate dormer T-bar.

50



Fasten with 2 1/2" screws.

51



Set dormer front on double T-bar.

52



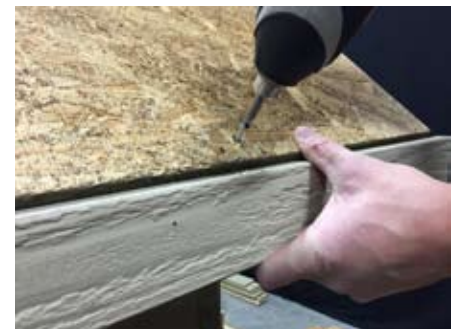
When flush on inside fasten using 2 1/2" screws.

53



Refer to roof sheeting drawing. Sheeting will hang over 12" from 2x3 on gable.

54



Fasten using 1 1/4" screws 8"-10" o.c.

# The Craftsman Playhouse



55



Continue with roof sheeting.

56



Measure to make sure rafters are in place before fastening.

57



After you are finished with the back side begin installing sheeting on front side.

58



Refer to drawing for front side.

59



Install dormer sides, fasten with 2 1/2" screws.

60



Install dormer rafters 2 1/2" screws.



# The Craftsman Playhouse



61



Install dormer sheeting.

62



Measure 6 1/2" from dormer front framing. Fasten sheeting using 1 1/4" screws.

63



Install deck boards on porch. Add 2x4 between 4x4's for support, overhang boards 1" on end and front of 4x4.

64



Continue installing the rest of the boards.

65



Locate below door siding 3"x34".

66



Make sure siding is flush with top of floor, fasten using 1 1/4" screws.

# The Craftsman Playhouse



67



3"x20" siding for below child door.

68



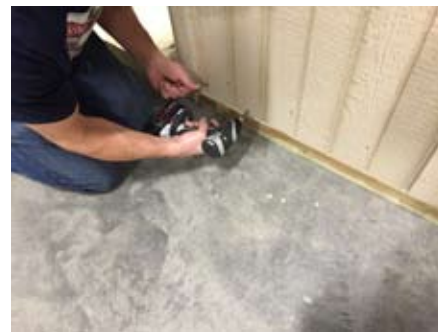
Fasten likewise.

69



Fasten all siding corners with 1 1/4" screws 10" o.c.

70



Fasten siding along bottom with 1 1/4" screws 8" o.c.

71



Locate above adult door trim.

72



Fasten with 1 1/4" screws.

# The Craftsman Playhouse



73



Find door spacer.

74



Lay door spacer on floor by adult door.

75



Set bottom section of door on door spacer. Keep door tight against trim and fasten door with 1 1/4" black headed screws.

76



Install top section of door keep 1/4" space between top of door and above door trim.

77



Locate child door sections.

78



Lay door spacer on floor.



# The Craftsman Playhouse



79



Set bottom section on floor.

80



Fasten with 1 1/4" black headed screws.

81



Set top section with 1/4" gap on top.

82



Locate door knob and fasten with 2 1/2" screw. This should be positioned to hold both sections.

83



Using 1/4" black screws, fasten door handles as shown.

84



Child door after it is complete.

# The Craftsman Playhouse



85



Center shutters over window flange.

86



Fasten using 1 1/4" screws.

87



Center top window trim above shutters and fasten with 1 1/4" screws.

88



Center flower boxes below shutters over window flange.

89



Fasten using (3) 1 1/4" screws.

90



Install corner trim.

# The Craftsman Playhouse



91



Corner trim flush with siding on bottom.

92



93



Keep rail 1 1/2" up from bottom post.

94



Fasten with (2) 2 1/2" from underside of railing.

95



Assemble one side of porch railing.

96



Install 1" in from edge, secured with 2 1/2" screws.



# The Craftsman Playhouse



97



Fasten with (2) 2 1/2" screws back against the building.

98



Locate porch beam set on top of corner post.

99



beam 1" out past corner post.

100



Fasten with 2 1/2" screws.

101



Porch gable section top of beam.

102



Fasten porch gable on top of beam.

# The Craftsman Playhouse



**103**



Fasten porch gable to main building.

**104**



Place 8" wide plywood 5/8" thick on the main building on top of sheathing underneath top end of porch rafter on DIY kits only.

**105**



Fasten porch rafter to beam.

**106**



Fasten top end of porch rafter on DIY kits only, don't forget 8" wide plywood underneath porch rafters.

**107**



Remove porch Fascia trim on porch beam.

**108**



Fasten porch fascia trim, match with other porch fascia.

# The Craftsman Playhouse



109



Fasten dormer rakes and trim at peak.

110



Install the dormer window trim sides.

111



Install dormer window trim on top.

112



Install porch roof sheeting, 11 1/2" over hang against siding.

113



Install porch roof sheeting, flush with rafter on bottom.

114



Porch roof sheeting.



# The Craftsman Playhouse



115



Fasten roof sheeting with 1 1/4" screws.

116



Locate the rakes, lay rakes on floor.

117



Screw rakes together with 2 1/2" screws.

118



Fasten rakes to roof sheeting with 1 1/4" screws. Flush outside with roof sheeting.

119



Fasten rakes to sheeting with screws.

120



Fasten porch fascia to rakes.

# The Craftsman Playhouse



121



Install activity deck below small door in gable up against gable trim.

122



Center activity deck with small door, fasten with (2) screws.

123



Deck has 2 countersink holes, use 3/8" drill bit to drill hole through deck and gable stud. Install (2) bolts from inside out, nut on outside.

124



Deck brace.

125



Deck brace underneath deck, flush on outside, fasten with 2 1/2" screws.

126



Fasten front end of brace to deck.

# The Craftsman Playhouse



127



Drill hole with 3/8" drill bit through brace and gable stud.

128



(4) bolts  
(2) bolts for deck  
(2) bolts for deck brace

129



Put bolt in from inside.

130



All nuts are outside.

131



Install small Gable door.

132



Fasten with 1 1/4" black screws.



# The Craftsman Playhouse



133



Railing on top of deck.

134



Back against the building 1" in from side of deck.

135



Fasten railing post to deck with 2 1/2" screws.

136



Install latch on inside of door with black screws.

137



Fasten brackets with 2 1/2" deck screws, install in pocket of the trim, square it and push it up against the rake.

138



(2) brackets against corner trim up against the rake.

# The Craftsman Playhouse



**139**



(3) dormer brackets are smaller, install (2) at the corners.

**140**



(1) dormer bracket at the peak.

**141**



Locate loft.

**142**



Fit loft together and screw together with 2 1/2" screws.

**143**



Install (2) 36" Loft braces.

**144**



Fasten with 2 1/2" screws.

# The Craftsman Playhouse



145



Install 34" loft brace 6" down from top of wall.

146



Fasten loft with 2 1/2" screws.

147



Install loft railing on inside of 2x6 with 2 1/2" screws.

148



center ladder for loft.

149



Flush on top fasten with 2 1/2" screws.

150



Fasten railing for loft from inside.



# The Craftsman Playhouse



151



Install V-channel.

152



The V-channel goes up against the roof sheathing on inside of the valley.

153



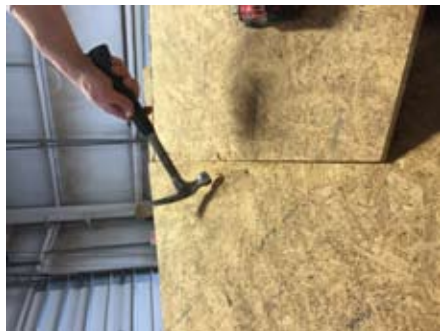
Fasten V--channel from inside with 2 1/2" screws enough to hold in place.

154



Fasten V-channel from outside with 1 1/4" screws.

155



Break 2 1/2" screws off with hammer.

156



Install drip edge on eve first fasten with 1 1/4" screws.

# The Craftsman Playhouse



**157**



Start drip edge on eve, flush on gable end.

**158**



Splice drip edge at hip.

**159**



Gable drip edge flush with eve drip edge outside edge.

**160**



Square drip edge to cut.

**161**



Over lap drip edge on hip.

**162**



Cut drip edge at peak.

# The Craftsman Playhouse



**163**



Once drip edge is in place, snip sharp edges on both corners of porch.

**164**



Cut shingle in half, use top half to start.

**165**



Follow shingle package instruction.

**166**



Stagger shingles.

**167**



Continue installing shingles in a staggered manner.

**168**



Cut around dormer.



# The Craftsman Playhouse



**169**



Fit around dormer.

**170**



Locate flashing for around dormer; 1 front, 2 sides.

**171**



Install flashing on front of dormer.

**172**



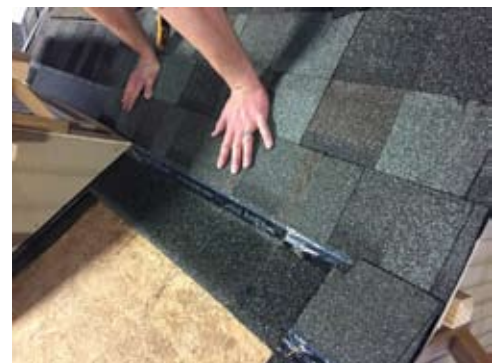
Side dormer flashing.

**173**



Install flashing along side of dormer.

**174**



Flashing is installed, continue shingling.

# The Craftsman Playhouse

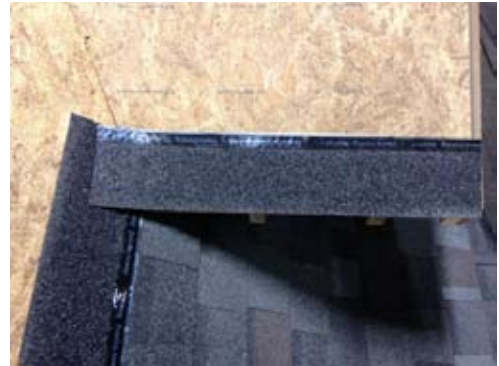


175



Shingle underneath dormer.

176



Main roof shingles underneath dormer shingles on top.

177



dormer shingle about 6" past valley.

178



Finish main roof to peak about 6" past valley.

179



180

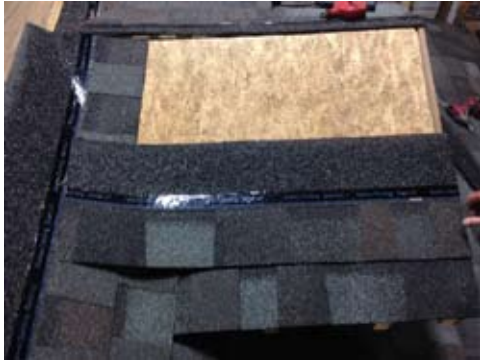


Cut off at peak.

# The Craftsman Playhouse



181



Continue shingling dormer.

182



Snap a line to cut dormer shingles in the valley.

183



Cut valley shingles.

184



185



Install ridge cap.

186



Install ridge cap on main roof first.



# The Craftsman Playhouse



187



188



Cut ridge cap flush with end.

189



190



Start dormer ridge cap at peak of main roof.

191



Cut to fit.

192



# The Craftsman Playhouse



193



Cut ridge cap on dormer flush with end.

194



195



Caulk where two peaks come together.

196



Valley dormer side is cut.

197



Roof is done.

198



You are done.