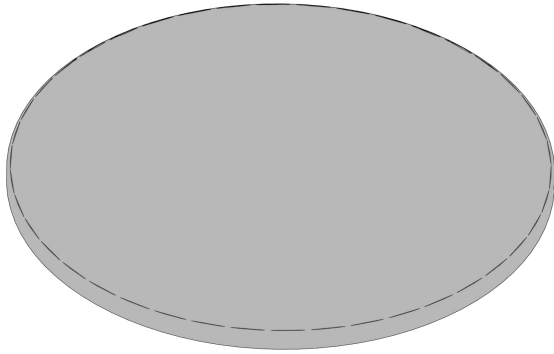
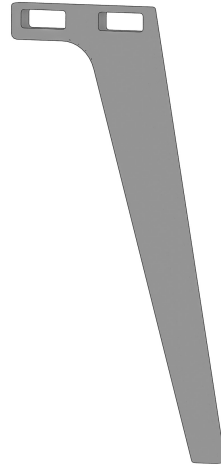


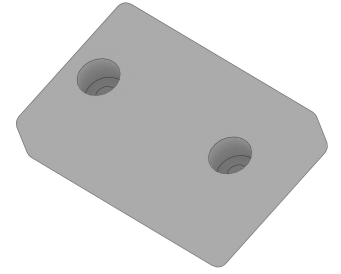
Included Parts



Top
X 1



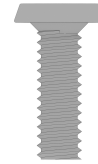
Leg
X 3



Block
X 6



Allen Wrench
X 1



1/4" X 3/4" Allenhead Bolt
X 12



BERLIN GARDENS
take life outdoors™

Assembly Tips

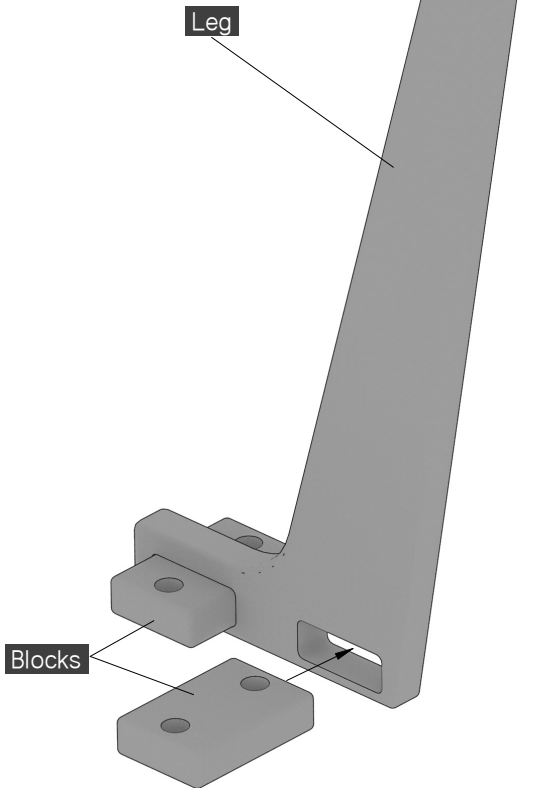
***Please read before beginning assembly!

To avoid damaging furniture, perform the assembly on a clean, soft surface like a carpet, blanket, or the flattened cardboard box with all the staples removed. Start the bolts with the included Allen Wrench until the 4 bolts for a leg are started, then fully install them. Be sure to tighten them very firmly. If it seems parts are not fitting properly, reread the instructions to ensure you have the correct components and are fitting them together correctly. If you need additional assistance or have questions, feel free to contact Berlin Gardens Customer Service for support at 800-593-3411. We will be happy to assist you!

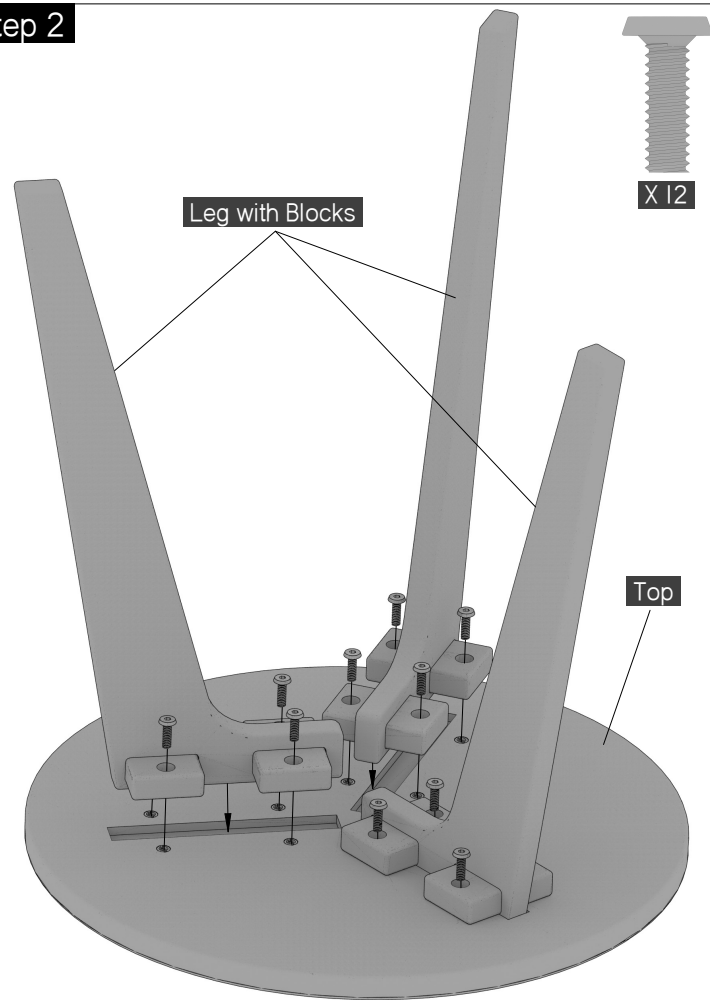
***Please Recycle the Box!



Step 1



Step 2



Step 2 Magnified View

