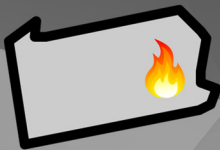
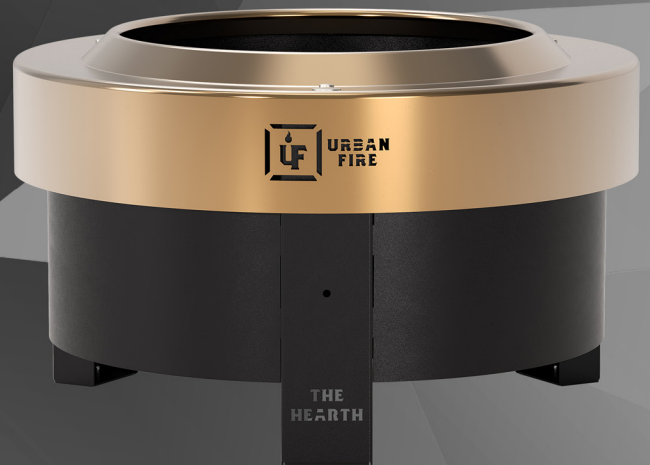
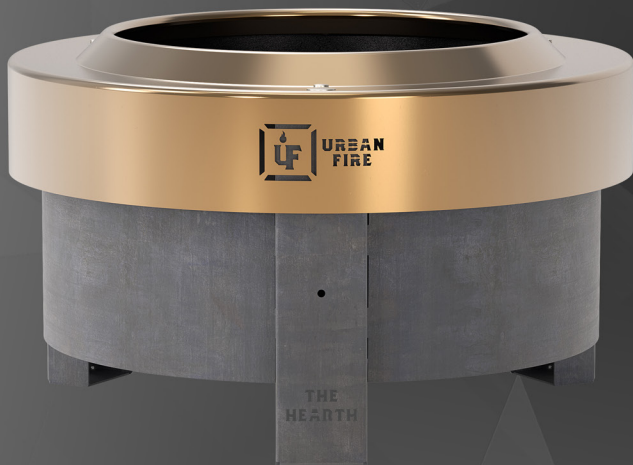




**URBAN
FIRE**

THE HEARTH

SMOKELESS FIRE PIT



**PROUDLY MADE IN
LANCASTER
COUNTY, PA. USA**



urbanfire.co

ASSEMBLY MANUAL / USE AND CARE GUIDE



Questions? Issues with Damaged or Missing Parts?

In order to best assist you, please contact YardCraft, the trusted distributor of Urban Fire products, NOT a third party retailer, with any questions regarding our products, damages, missing parts, or replacement parts. This will help you get what you need as quickly as possible! Call us at (717) 690-1587, or Email us at info@urbanfire.co

CAUTION

- For outdoor use only.
- Never place directly on deck/patio.
- Never place directly on grass.
- Place on pavers, crushed stone, or another suitable surface to avoid any damage caused by heat and coals.
- Fire pit will be extremely hot when burning; do not touch.
- The use of accelerants will void all manufacturer warranties.
- Burn only dry hardwoods.
- Only operate under adult supervision.
- Never leave fire pit unattended.





URBAN FIRE

The Hearth is unlike any other fire pit on the market. The Hearth is fully collapsible, making it easier to pack up for easy storage, or on the go. We used science to create a better atmosphere for you and your family around the fire. The Hearth pulls air in from three sources: protected air holes in the base, through hollow legs, and the top of each wall. As it rises through the leg, the air becomes super heated as your fire's internal temperature reaches up to 1,500°F. The super heated air is expelled through the top, right under the top cap, mixing with the smoke coming off the fire. This ignites a secondary burn of the smoke, nearly eliminating all visible fumes coming from your fire pit. Add any of our accessories like the Adjustable Swivel Grill or The Blade™ Searing Attachment. With The Hearth, take your fire wherever you roam!

ACCESSORIES



BBQ NATION PACKAGE



FIRE STARTERS



**ADJUSTABLE SWIVEL
GRILL**



**THE BLADE[®]
SEARING ATTACHMENT**



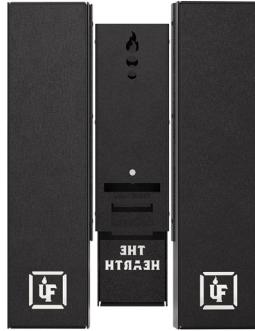
MORE TO COME!



WHAT'S IN THE BOX



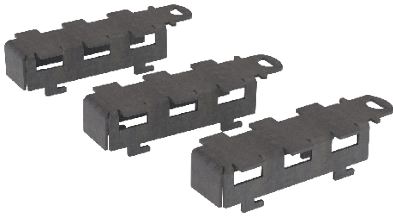
**(T)
TOP RING**



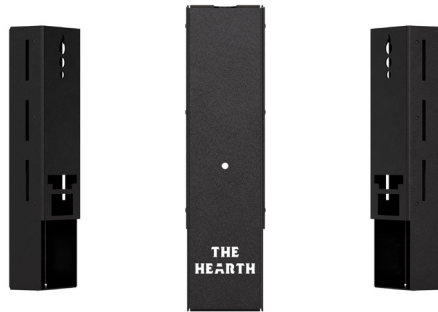
**(L)
UF LEG (X2)**



**(W)
SIDE WALLS (3)**



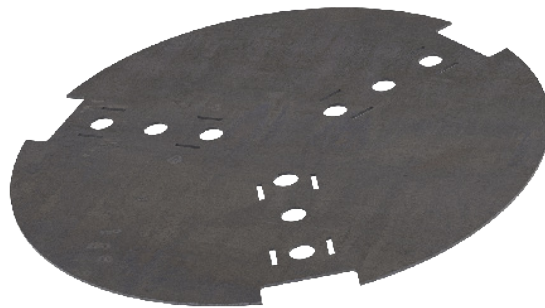
**(A)
AIR CHANNEL
COVERS (3)**



**(HL)
HEARTH LEG**



HARDWARE PACK



**(B)
BASE PLATE**



FIRST FIRE'S ON US!

4 PACK OF 100% ALL NATURAL. FATWOOD FIRESTARTERS



FIGURE 1



FIGURE 2

Step1: Locate 3 Air Channel Covers (A) and all 3 legs (L & HL), and assemble each component as shown in Fig. 1

Step2: Lift the Base Plate (B) approximately 3 inches, as shown in Fig. 2

Note: It may help to place one end of the base plate on your foot to help support it for the next step.



FIGURE 3



FIGURE 4

Step3: Carefully fold the legs (L & HL) and the Air Channel Covers (A) towards each other until it stops, as shown in Fig. 3

Step4: Lower the assembly into the appropriate slots on the Base Plate (B), starting with the front two prongs of part (A), as shown in Fig. 4

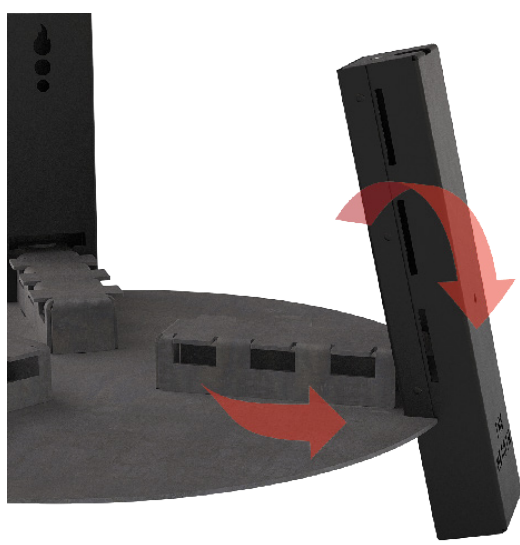


FIGURE 5

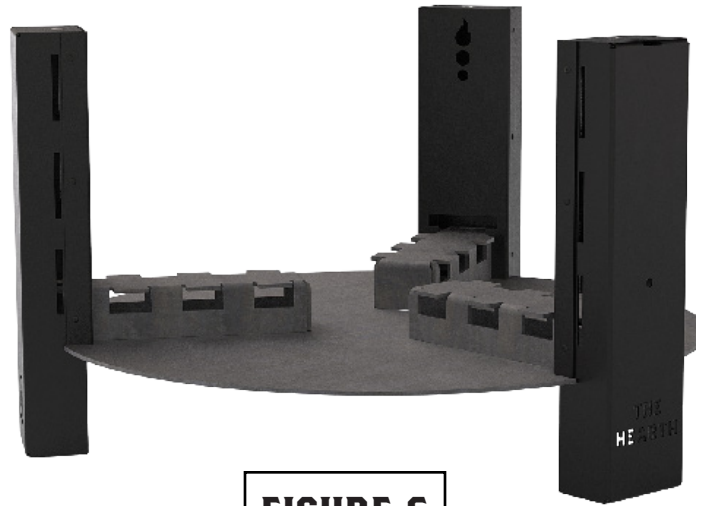


FIGURE 6

Step5: When both sets of prongs on the Air Channel Cover (A) are lowered into the Base Plate (B), slowly pivot leg (L or HL) as shown in Fig. 5. This will lock the Air Channel Cover (A) to the leg and Base Plate (B).

Step6: Repeat steps 3 thru 5 for the remaining leg and cover assemblies, as shown in Fig. 6

Note: You may have to realign some of the assemblies after completion due to shifting.

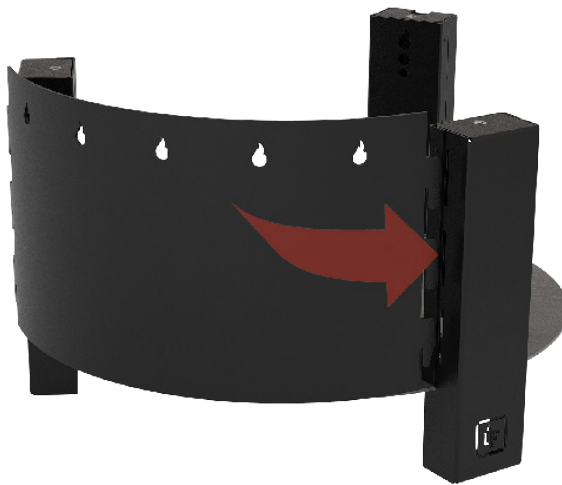


FIGURE 7

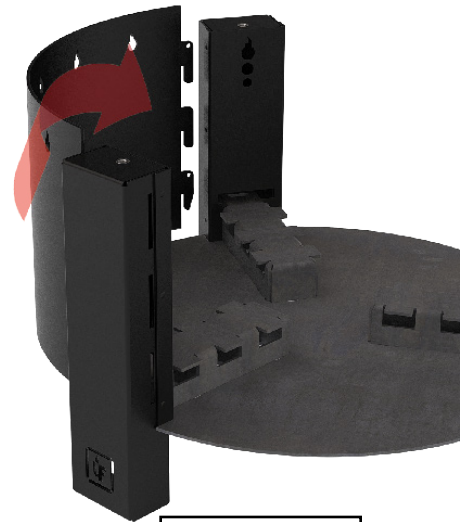


FIGURE 8

Step7: Insert the tabs on the Side Wall (W) into one of the legs, as shown in Fig. 7

Note: Be sure to keep the Side Wall raised until the next step.

Step8: Insert the opposite tabs into the second leg and gently lower the Side wall (W) all the way down, as shown in Fig. 8

Note: A light tap with a rubber mallet or your palm may be required to snap the second set of tabs into the slots.



FIGURE 9

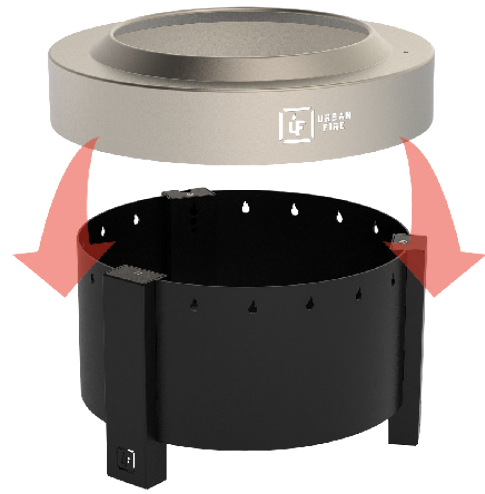


FIGURE 10

Step9: Repeat Steps # 6-8 for the remaining Side Walls (W), as shown in Fig. 9

Step10: Locate the Top Ring (T) and lower it over the legs, as shown in Fig. 10

Note: Be sure to align the “Grilling Pole” hole on the Top Ring (T) with “The Hearth” Leg (HL).

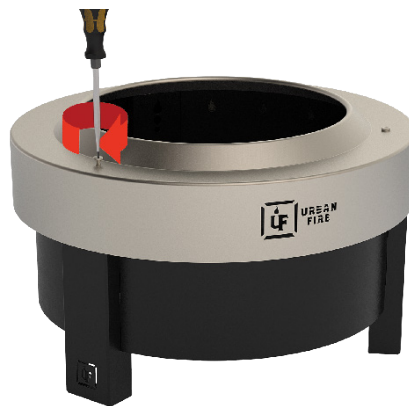


FIGURE 11

Step11: Use the provided bolts (Q) to fasten the Top Ring (T) to each Leg (L & F) using a flat head screwdriver, as shown in Fig. 11

Note: You may need to push/pull the legs while fastening for proper alignment.

Note: An optional Snap Cap (S) is provided to cover the hole used for the Urban Fire Adjustable Swivel Grill

CONGRATULATIONS!

YOU HAVE SUCCESSFULLY ASSEMBLED THE HEARTH FIRE PIT!



**URBAN
FIRE**