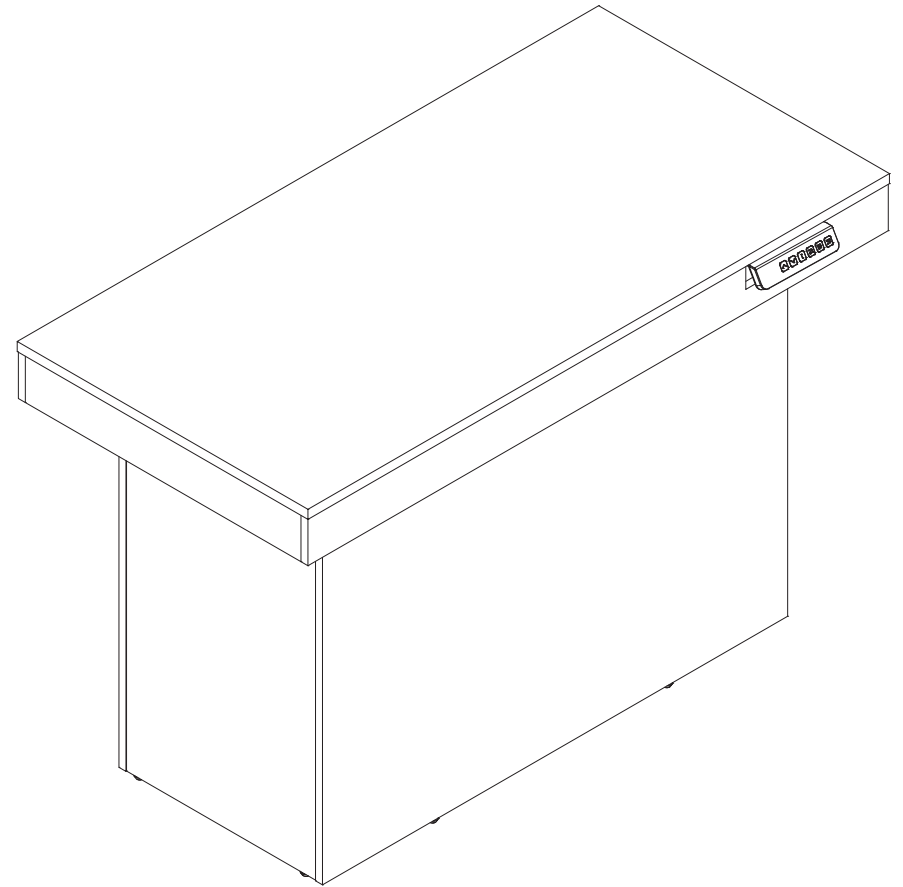


ASSEMBLY INSTRUCTION




Disclaimer

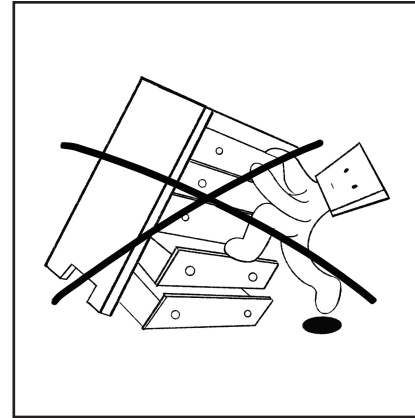
Use of this product constitutes acceptance of this disclaimer. Please read the following terms carefully:

- The product is guaranteed to be safe under normal use or foreseeable misuse.
- This furniture is designed for indoor household use only. Any improper modification, or use beyond the specified weight capacity (see product manual) shall void this disclaimer, and the manufacturer shall not be liable for any damage or injury arising therefrom.
- Regular wear and tear (e.g., fabric fading, minor hardware loosening) due to normal use is not considered a quality defect.
- The manufacturer shall not be responsible for damages caused by improper transportation, storage, or natural disasters (e.g., fire, earthquake).

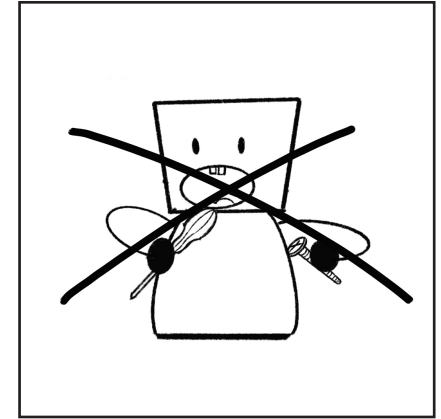
Electrical Safety Precautions

- **Do not** use damaged power plugs or loose power sockets.
- **Do not** move the product by pulling the power cord.
- **Do not** forcibly bend the power cord or place it under heavy objects.
- If the power socket is wet, carefully unplug the product's power plug.
- **Do not** touch the power plug with wet hands.
- Unplug the product's power plug before maintenance.
- For electrical products not in use for an extended period, ensure the power supply is disconnected.

 Children should use this product only with adult supervision.



DO NOT CLIMB OR HANG



DO NOT PLAY WITH OR SWALLOW SMALL PARTS

Weight Capacity:

–**Do not** place items exceeding the maximum weight capacity of the product. (For the product's weight capacity, please refer to the product link.)

Usage Scenarios and Maintenance Methods

- **Do not** place the product in a humid environment.
- Avoid direct exposure to high temperatures and keep it away from heat sources.
- Clean and maintain the product regularly.
- Place it on a flat surface. When moving is required, ensure that at least two people lift it together.
- Check the condition of screws regularly. If any screws are loose or fall off, reinforce them promptly.

Steel–wood products



Preparation before Installation

–Please read the assembly instructions carefully before installation and keep this manual for future reference. Check that all components are complete, including panels, hardware fittings, screws, plastic parts and other small components.

Ensure that **only adults** perform the installation, and keep children away from the installation area.

Instructions for Use

(1) Install in accordance with the instruction manual or professional guidance to ensure that screws, connectors, and other components are securely fastened. Make sure the support points are evenly in contact with the ground; if not, adjust the adjustable feet to level the product.

(2) Place items stably. Heavier items should be placed at the bottom (layer) to avoid instability and tipping due to an unbalanced center of gravity.

(3) Avoid prolonged exposure to direct sunlight or humid environments to prevent aging or mildew.

(4) **Do not** place heavy objects exceeding the product's load – bearing capacity, so as to avoid deformation and sagging of the wooden boards, which may affect the service life of the product.

(5) Regularly clean dust and stains on the surface to maintain hygiene.

(6) Suitable anti – collision corners can be installed to prevent children from being injured by sharp parts. This product is not a children's furniture. When children use this product, they should be accompanied and supervised by adults to ensure safe use. Adults and children are prohibited from climbing on it. It is forbidden to use the product as a support or stand on it for high – altitude operations.

- Steel–wood furniture is prone to moisture and rust, so it should avoid long–term contact with water or exposure to light and humid environments.
- Keep away from corrosive substances and avoid contact with corrosive chemicals such as acids and alkalis to prevent damage to the surface coating.
- High–temperature or frozen items should be placed on the furniture after being padded with heat–resistant mats; heavy or hard items should be placed on the tabletop after being padded with soft decorative tablecloths or felt pads for protection.
- Keep away from high temperatures and fire sources: It should be kept away from high temperatures, open flames or heat sources to prevent fires.
- Pay attention to the load–bearing range of the product and avoid overloading.
- Secondary drilling on metal parts is not recommended, as it will damage the internal structural strength.
- It is recommended to replace the product under the following circumstances: large–area rust or deformation of the base material, loose connection parts after multiple repairs, and significant decline in load–bearing capacity.
- Strictly use anti–tipping components in accordance with the instructions.
- It is strictly forbidden to violently open or close the doors and drawers of the furniture. When in use, appropriate force should be applied to avoid loose connections.

- When moving the furniture, items in the cabinet and drawers should be taken out, and movable parts such as doors and drawers should be fixed to prevent the furniture from tilting and parts from sliding off and causing injury. Do not drag or push hard during moving to avoid loose connectors and broken parts. The product needs to be lifted off the ground by multiple people at the same time, and attention should be paid to safety during moving.

(7) **Coating protection:** For metal parts with coatings, avoid using strong acid or strong alkali cleaners to prevent the coating from peeling off.

(8) **Lubricating connectors:** Regularly lubricate moving parts (such as hinges and slide rails) to maintain flexibility.

(9) **Products with wheels:** Regularly remove entangled hairs and fibers.



Maintenance Methods

(1) **Loose connectors:** Check the tightness of the connectors every 3 months. If they are loose, use the matching wrench to adjust and tighten them.

(2) **Surface cleaning:** Wipe with a soft dry or slightly damp cloth; do not use steel wool, hard objects, rough scouring pads, or acidic cleaners to avoid scratching the surface coating.

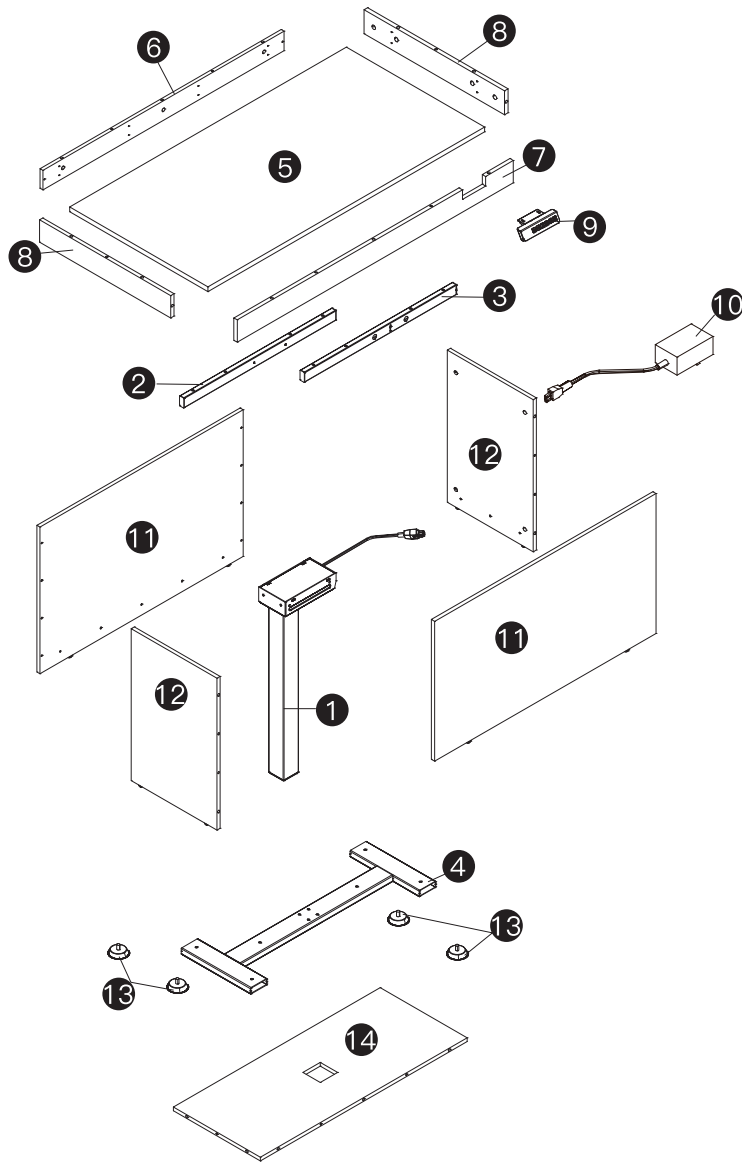
(3) When opening the cabinet doors and drawers of the product, apply appropriate force. It is strictly forbidden to open or close them violently, as this may cause loose connections.

(4) In suitable weather, regularly open the cabinet doors and drawers, take out the internal items, and ventilate the furniture to remove moisture.

(5) Place high-temperature or frozen items on the furniture after placing them on heat-resistant mats; place heavy or hard items on the tabletop after covering them with soft decorative tablecloths or felt pads for protection.

(6) **Rust prevention:** Regularly apply anti-rust oil or wax, especially in humid environments.

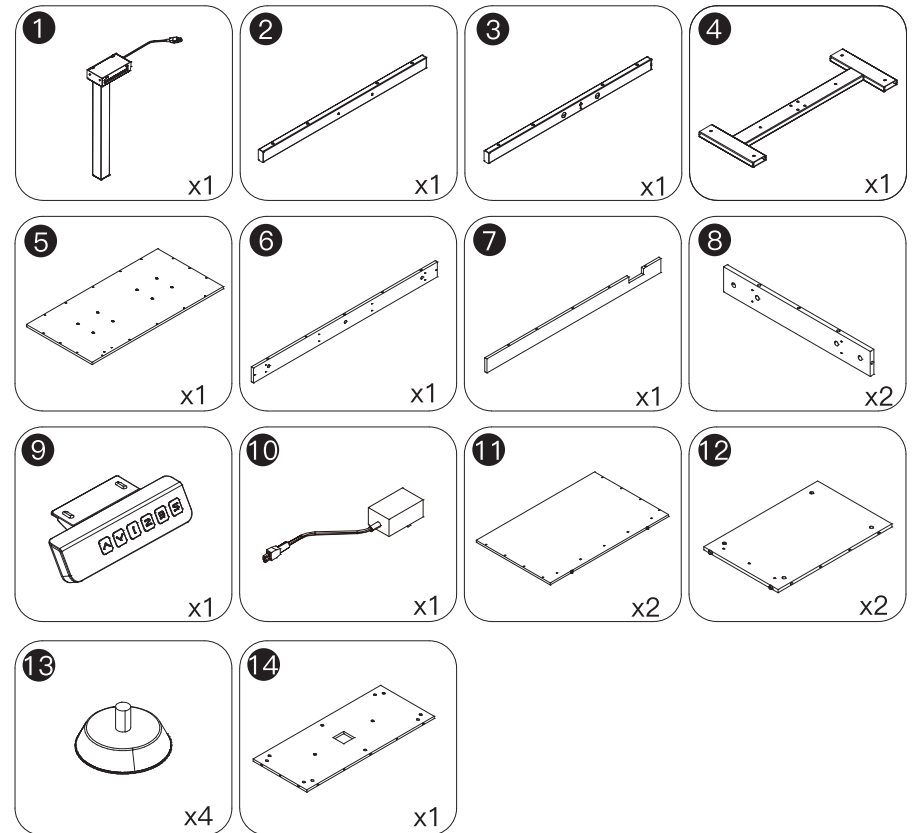
EXPLODED DRAWING:

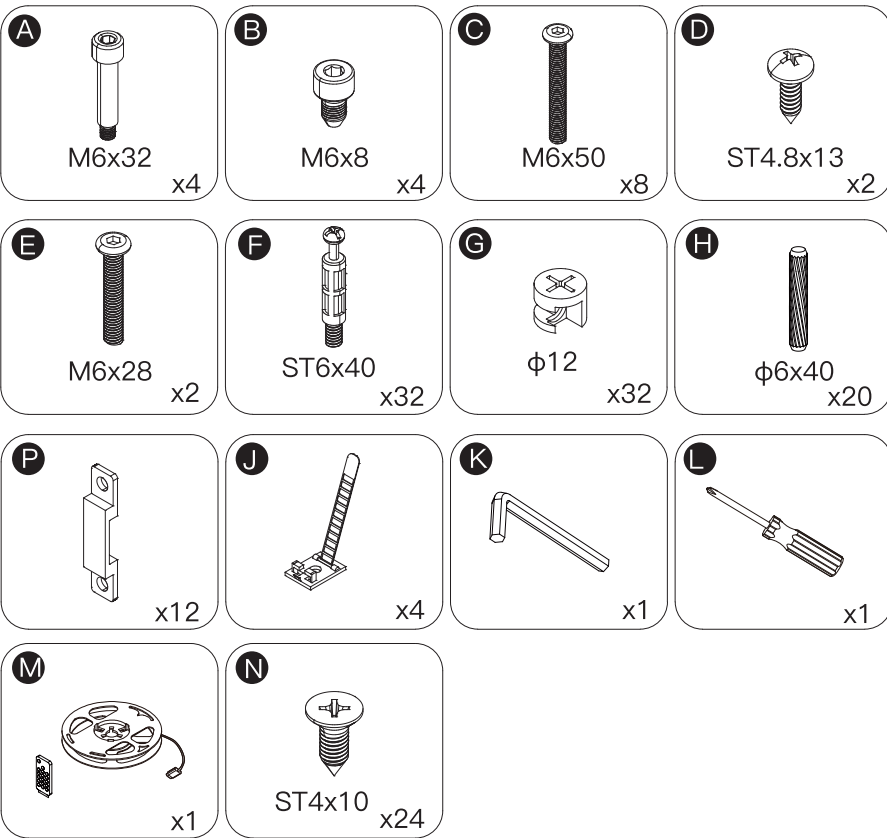


Please check all parts and accessories according to the parts list before assembling, make sure all contents are sufficient and in good condition.

If there is any parts missing or defective, please contact us immediately with purchase platform message to get replacement parts.

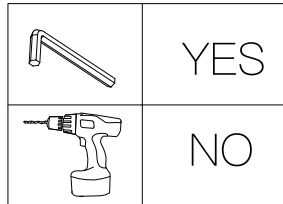
PARTS:





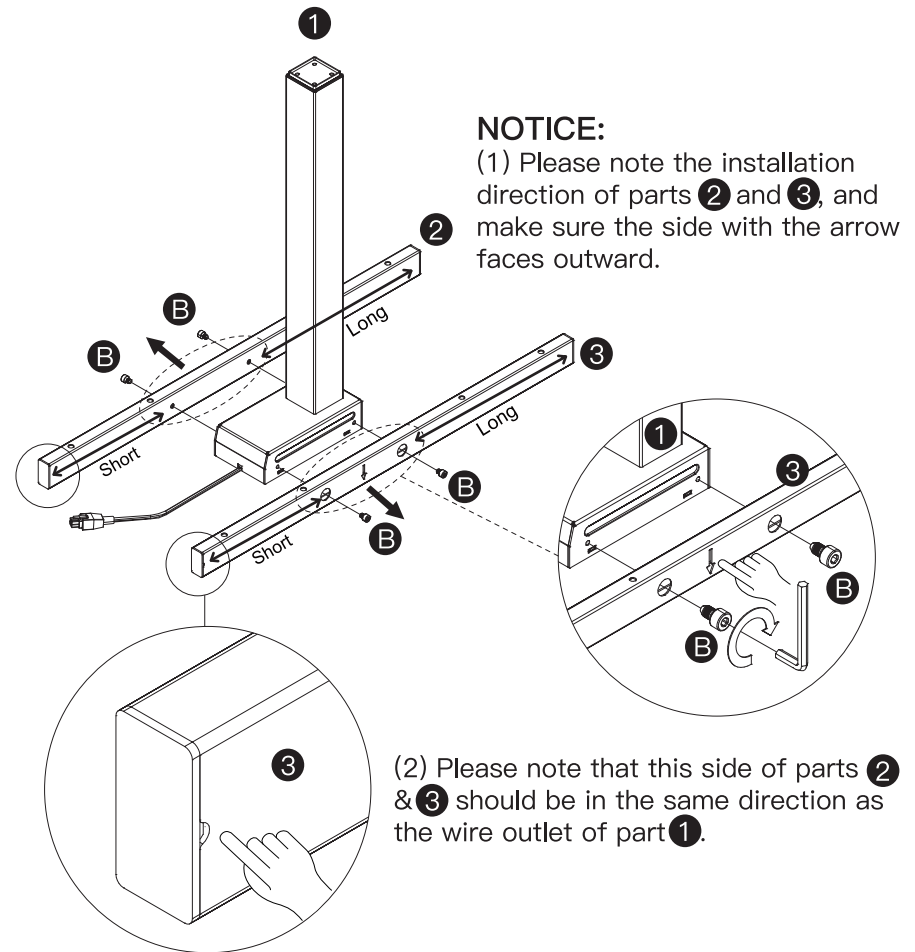
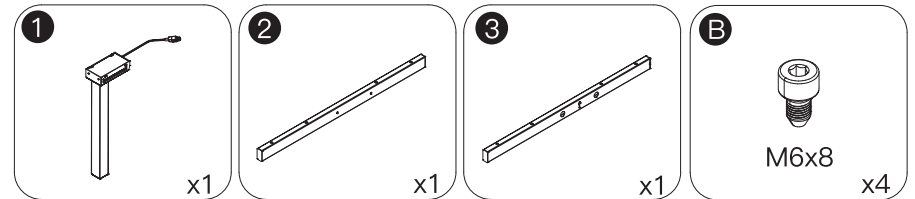
⚠ CAUTION:

- READ THE INSTRUCTION MANUAL BEFORE ASSEMBLING
- READ THE INSTRUCTION MANUAL BEFORE ASSEMBLING
- IDENTIFY, SORT AND COUNT ALL THE PARTS WITH TAGS
- ASSEMBLE IN AN AREA WITH PLENTY OF SPACE
- READ EACH STEP BEFORE BEGINNING CONSTRUCTION
- ASSEMBLE ACCORDING TO THE ILLUSTRATION IN CORRECT STEPS
- NEVER FORCE THE SCREWS OF FITTINGS
- KEEP THIS MANUAL FOR FUTURE REFERENCE
- TIGHTEN ALL THE SCREWS EVERY 6 MONTHS
- SHIFT OR DRAG THE DESK AFTER ASSEMBLY CAREFULLY
- POWER TOOLS SHOULD NOT BE USED TO ASSEMBLE THIS DESK

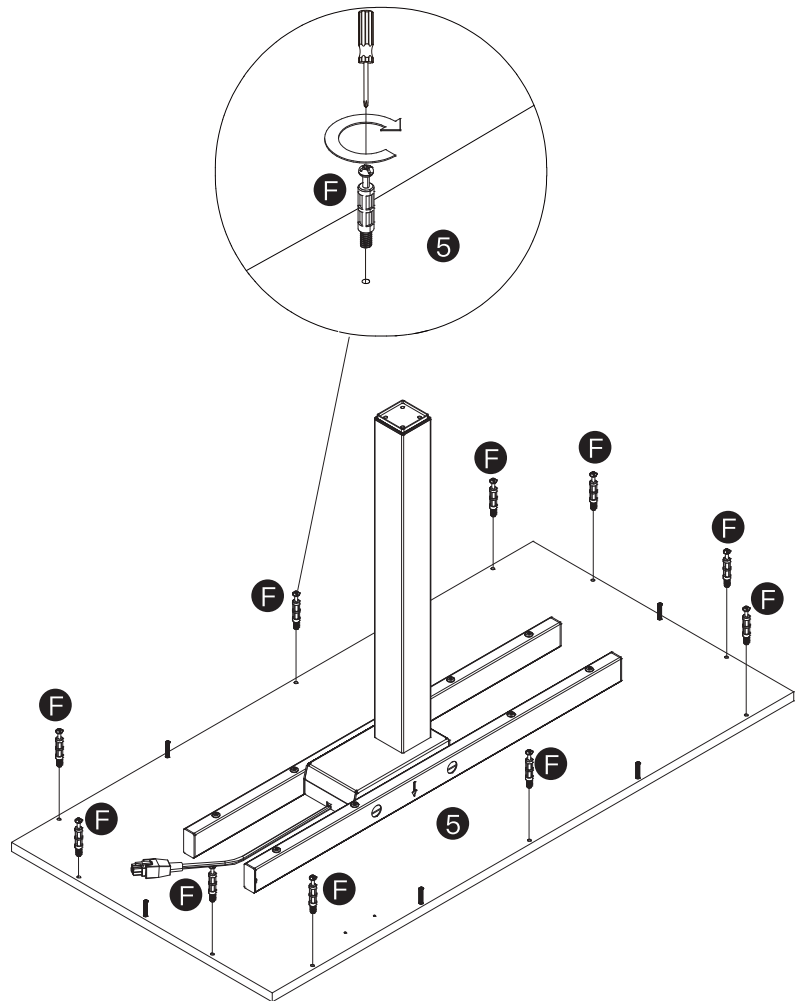
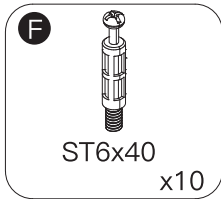


HOW TO INSTALL

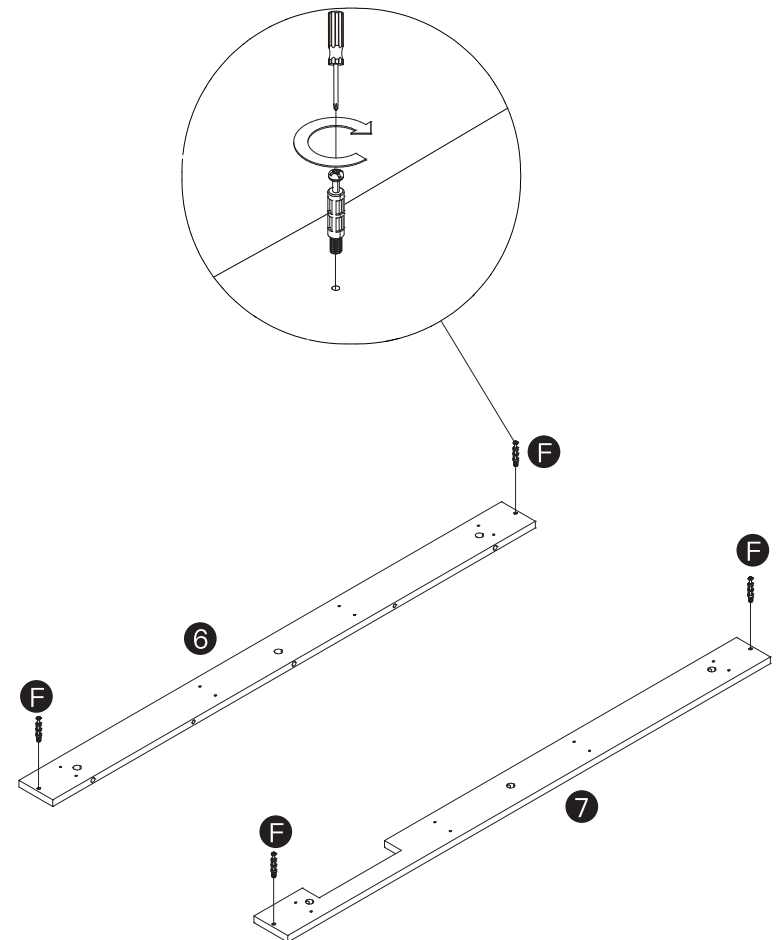
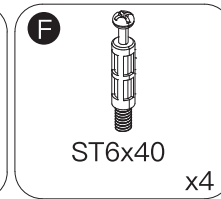
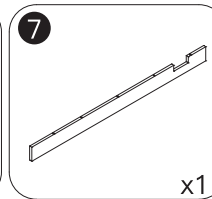
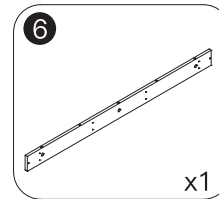
STEP 1



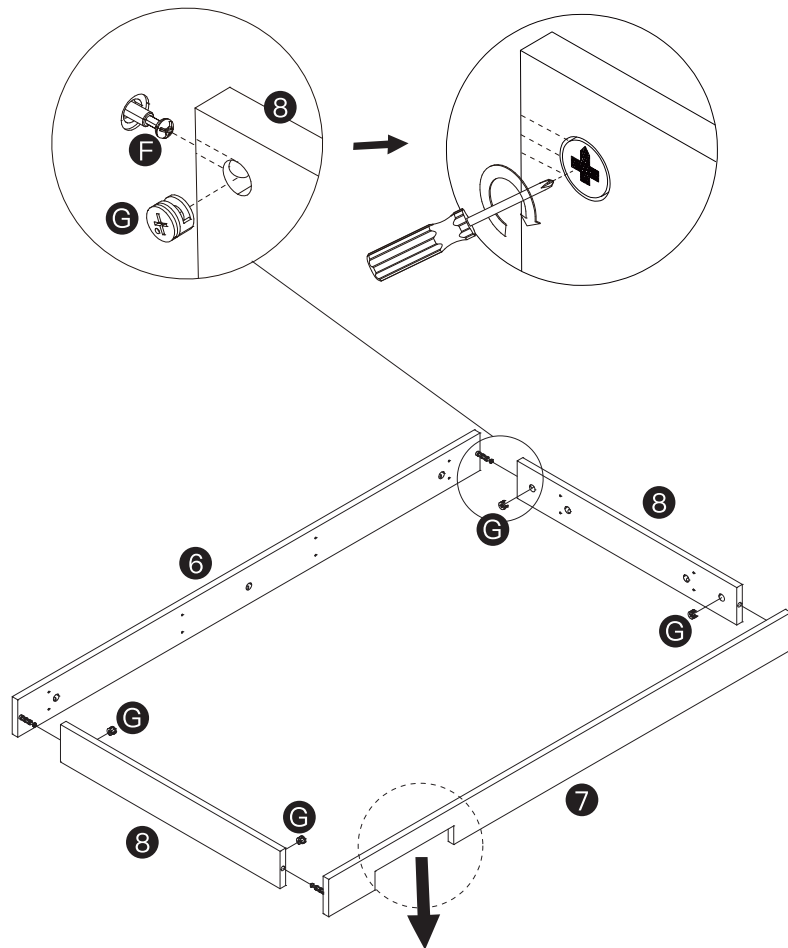
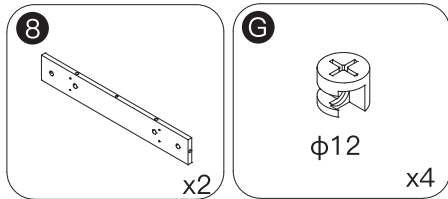
STEP 4



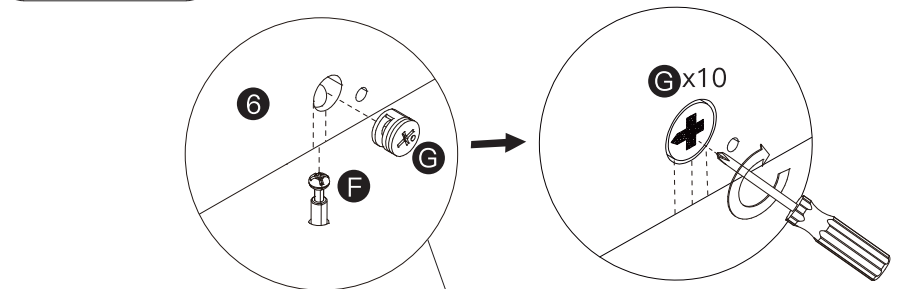
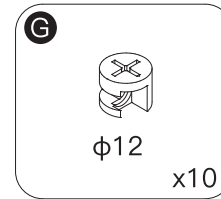
STEP 5



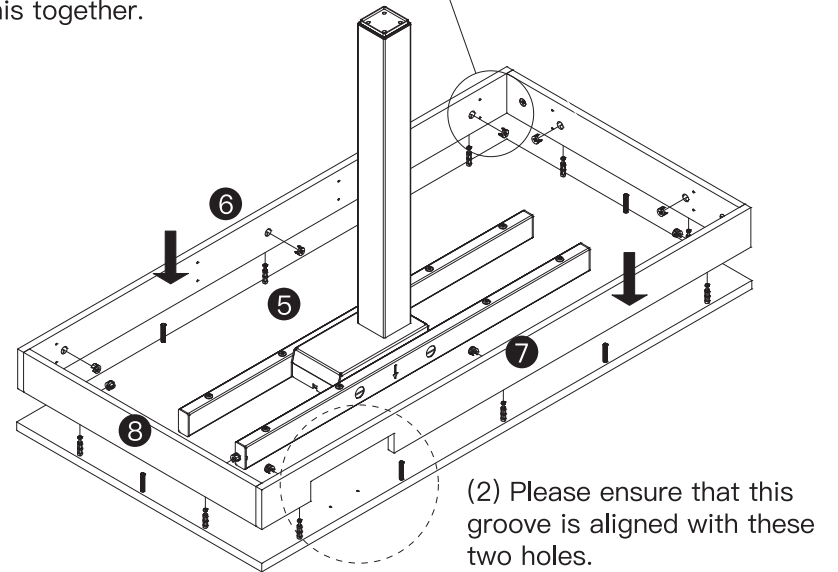
STEP 6



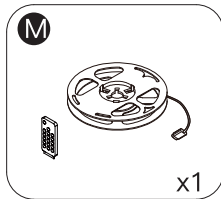
STEP 7



NOTICE:
(1) For your safety, it is recommended that two people install this together.

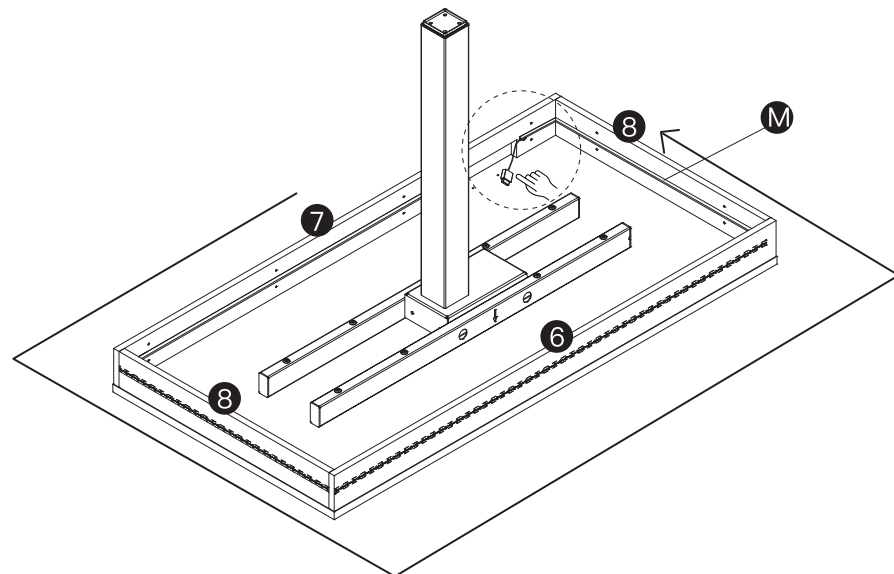
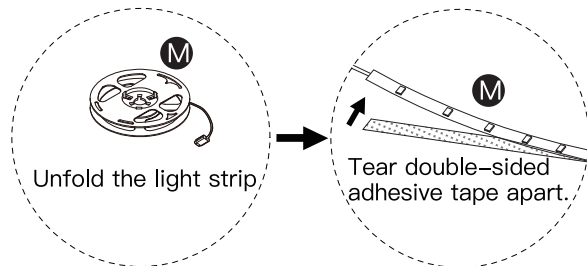


STEP 8

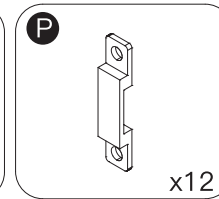
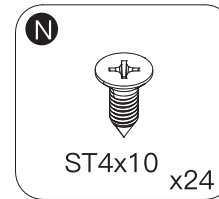


NOTICE:

Please be careful not to tear off the adhesive surface, when removing the double-sided tape.

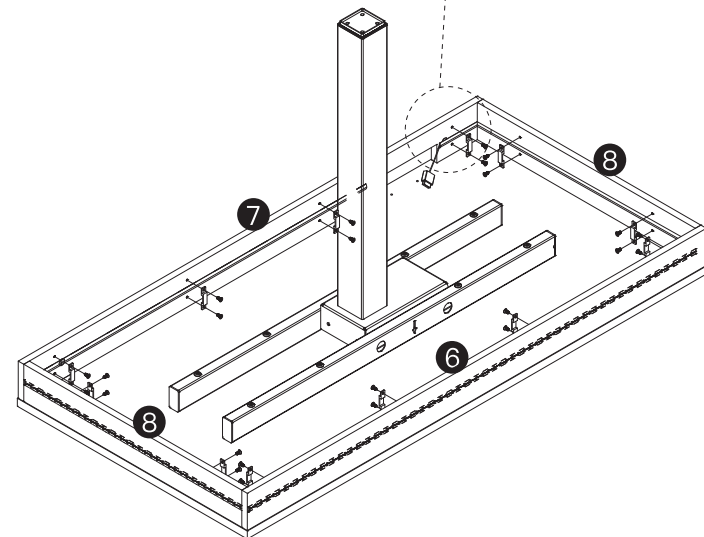
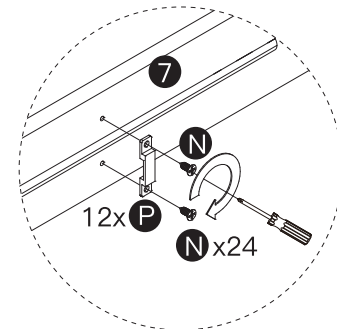


STEP 9

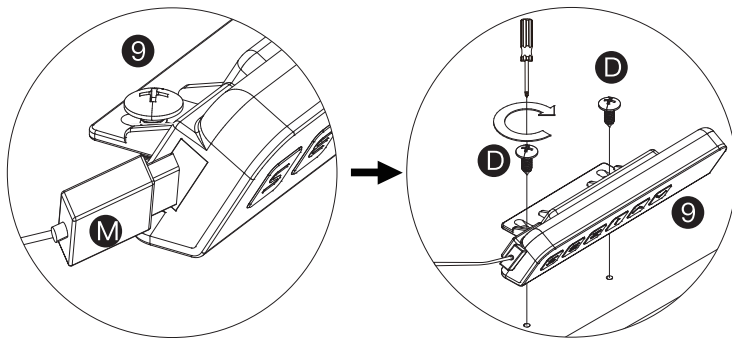
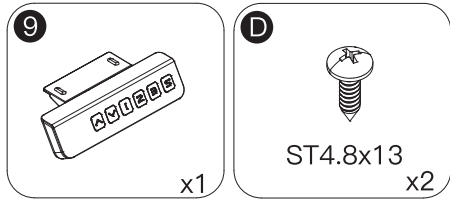


NOTICE:

Lock the buckle to prevent the light strip from falling off.

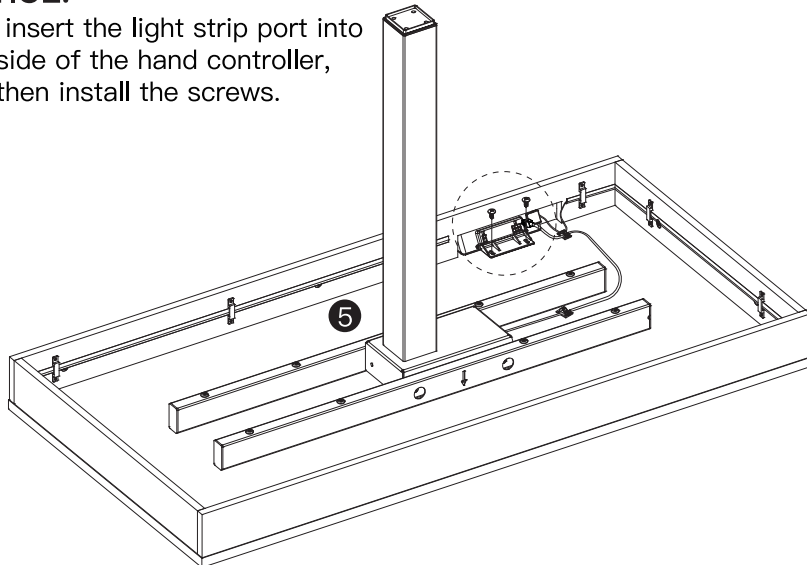


STEP 10

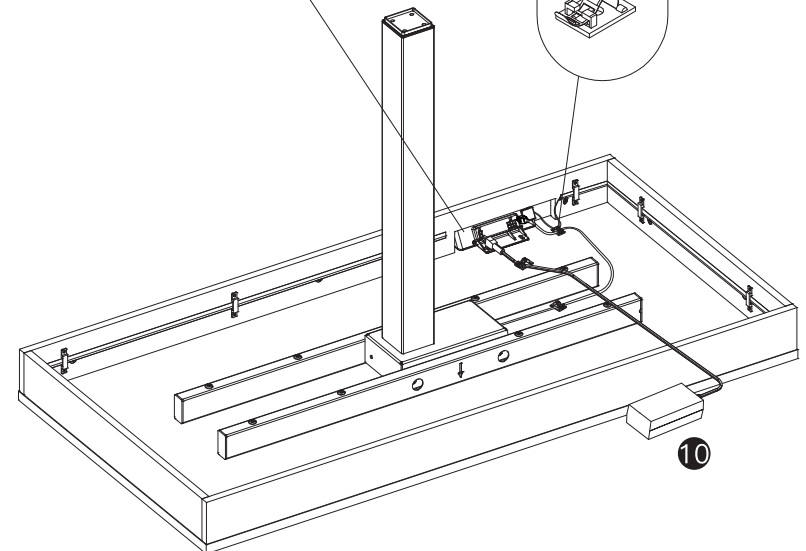
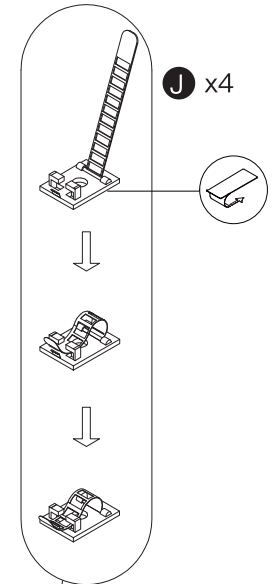
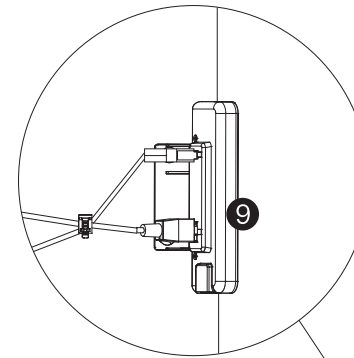
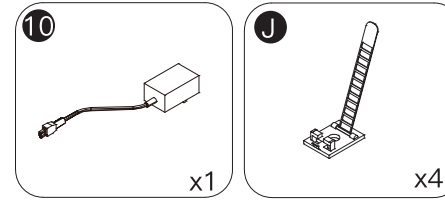


NOTICE:

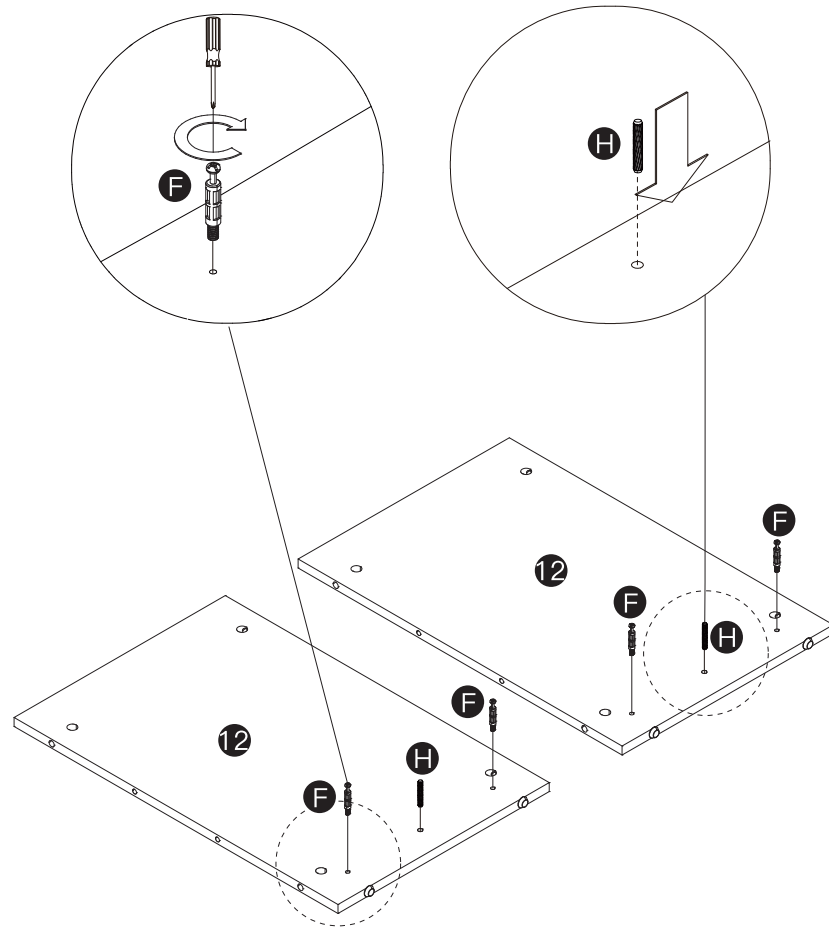
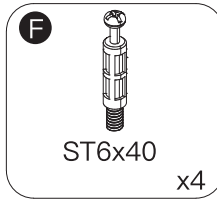
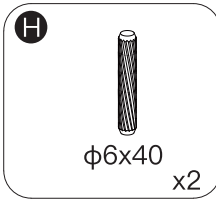
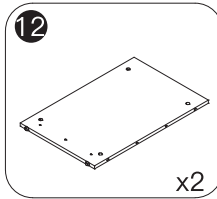
First insert the light strip port into one side of the hand controller, and then install the screws.



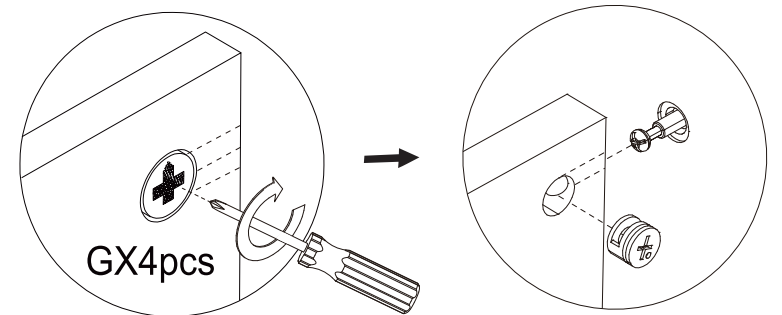
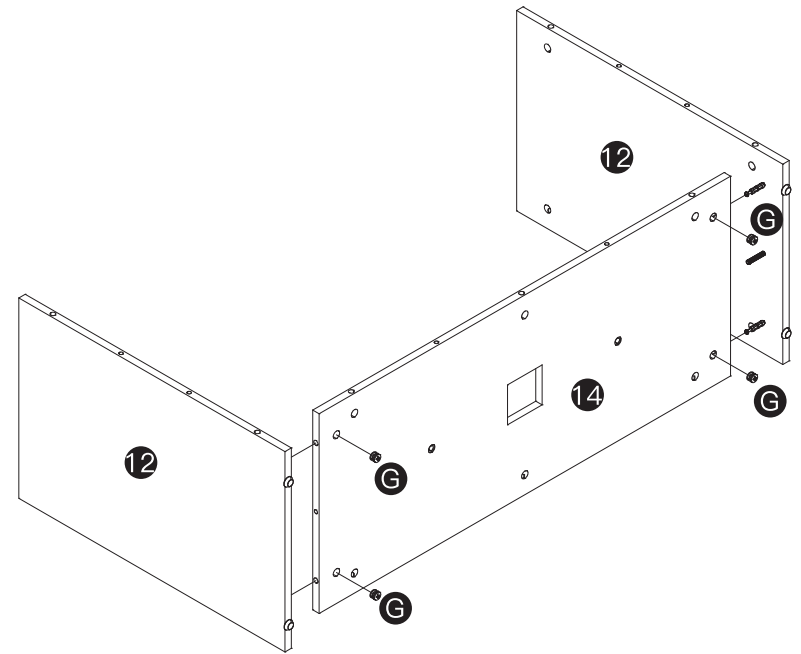
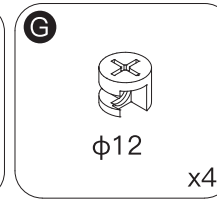
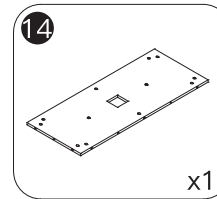
STEP 11



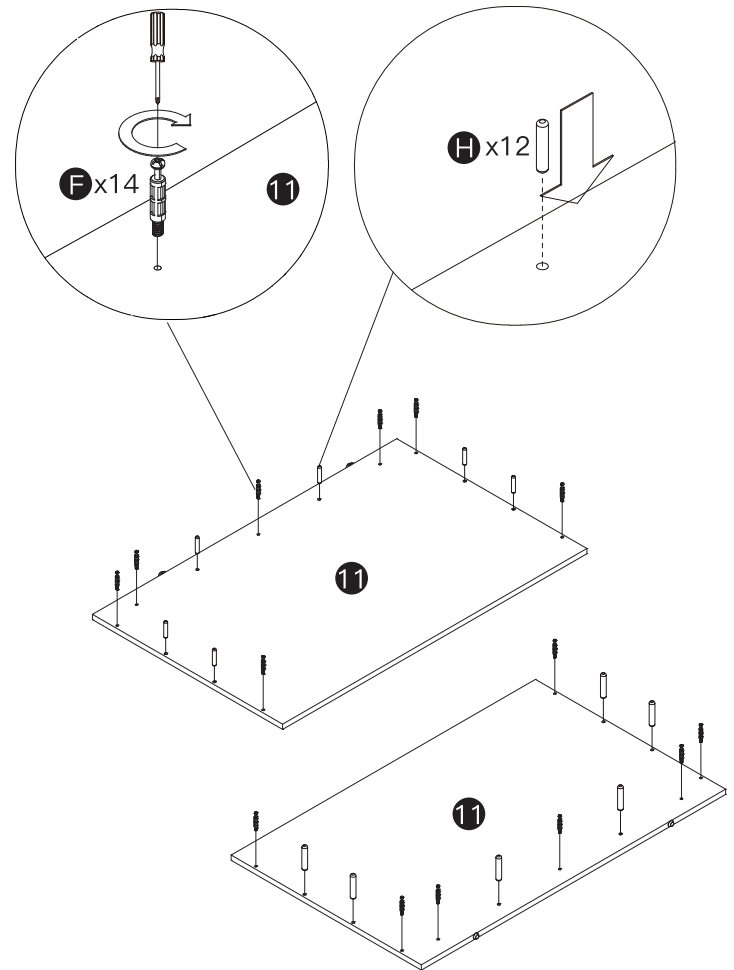
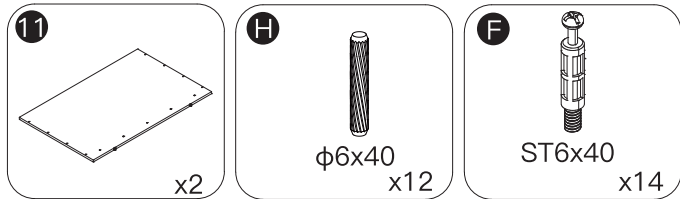
STEP 12



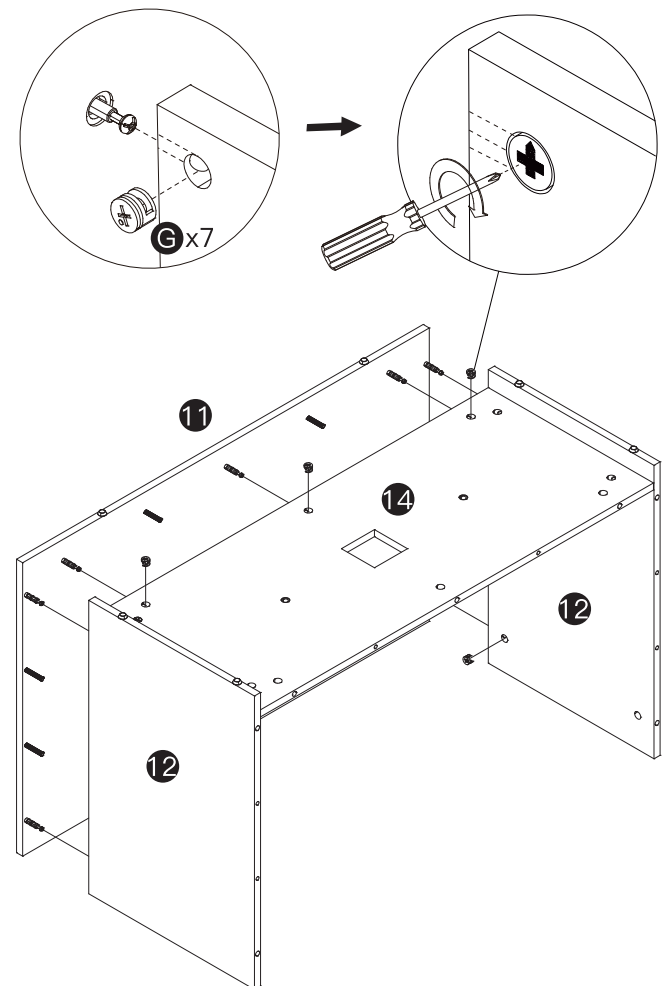
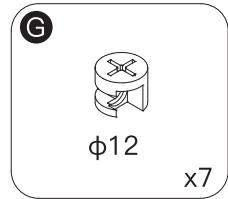
STEP 13



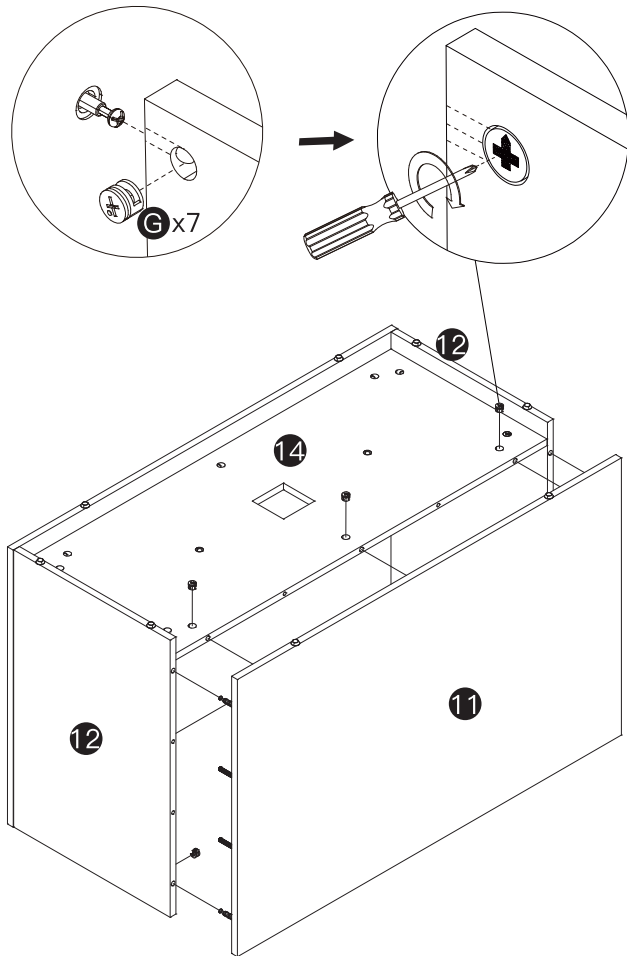
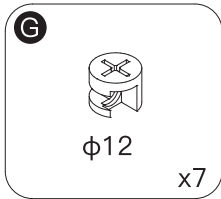
STEP 14



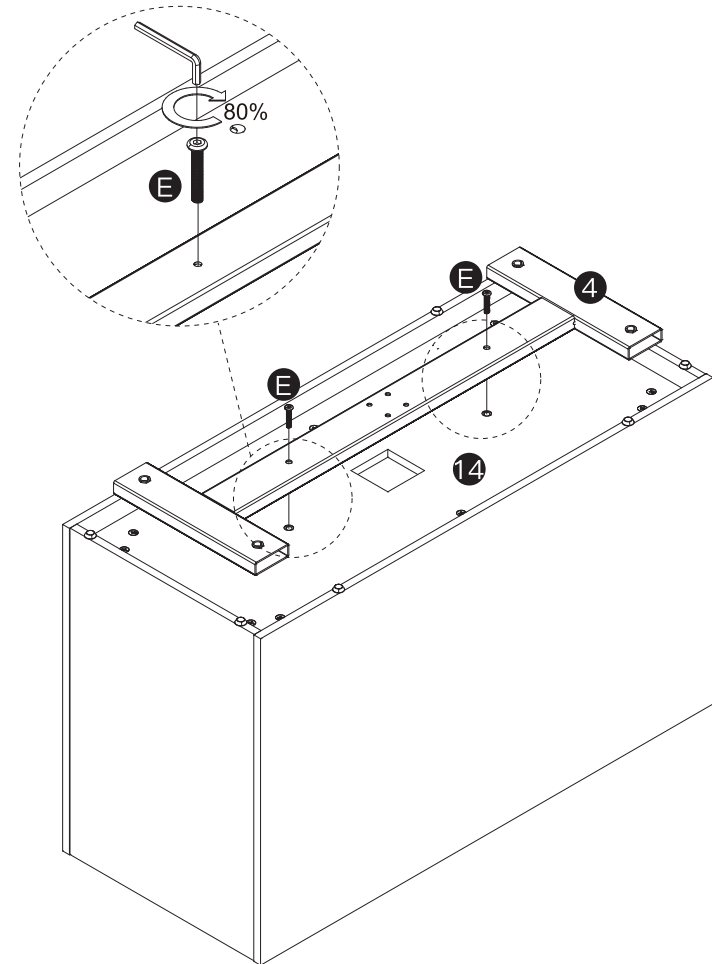
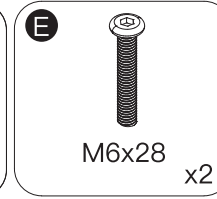
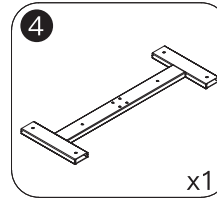
STEP 15



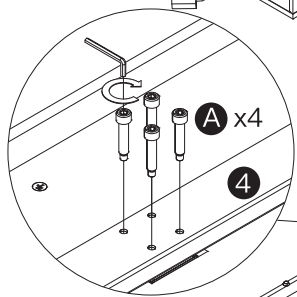
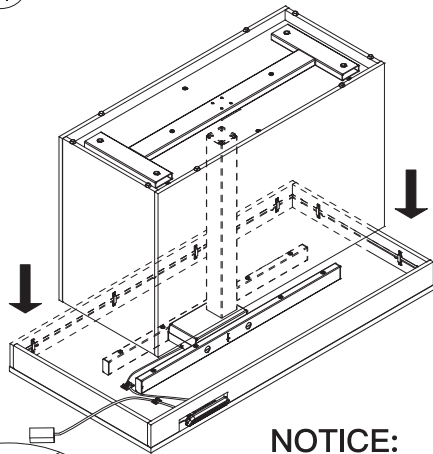
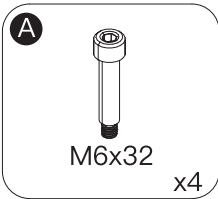
STEP 16



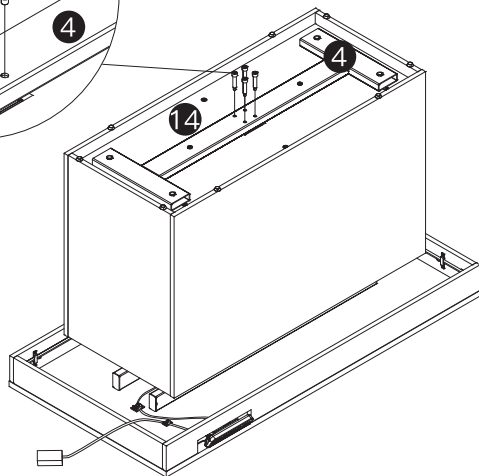
STEP 17



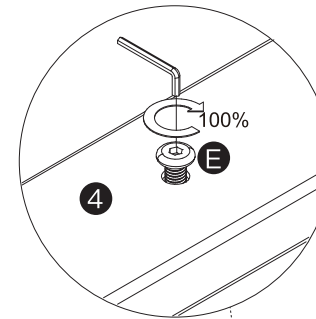
STEP 18



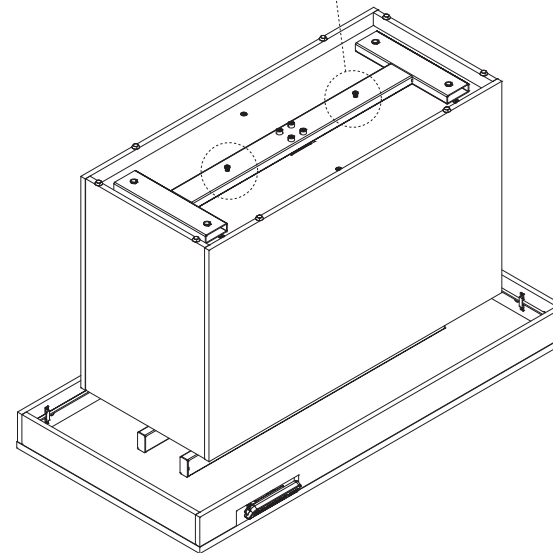
NOTICE:
It must be installed by two people together, and placed gently on the desktop.



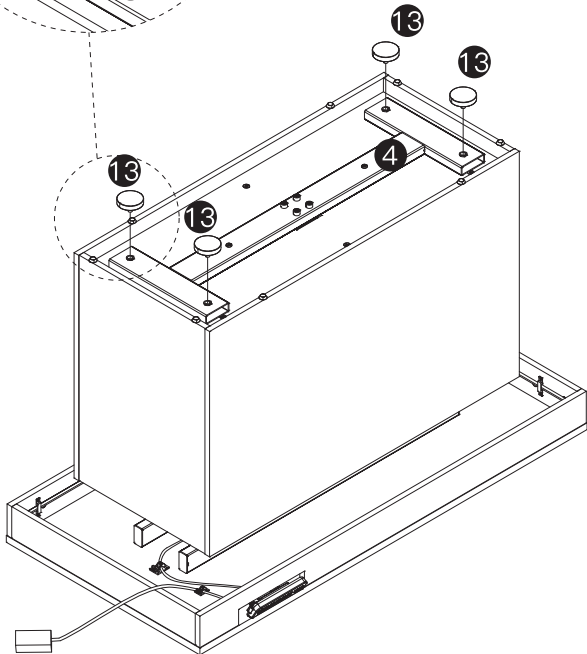
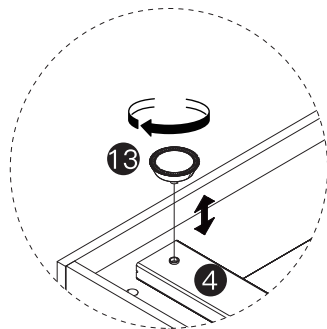
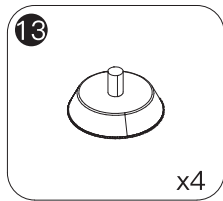
STEP 19



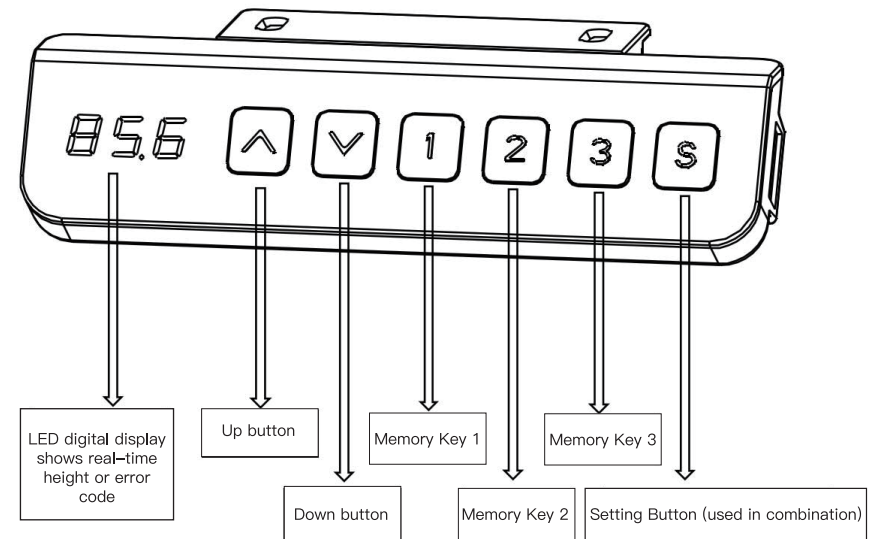
NOTICE:
Please tighten Screw E.



STEP 20



Operation Instructions for the Controller



Using the Height-Adjustable Desk Controller:

1.Upward Operation

Press and hold the “^” key on the controller, and the height-adjustable desk will rise. Release the key to stop.

2.Downward Operation

Press and hold the “v” key on the controller, and the height-adjustable desk will descend. Release the key to stop.

3.Call and Set Memory Heights

When the height-adjustable desk is stationary, press the “S” key. The current height will start flashing. At this point, press any one of the number keys “1”, “2”, or “3”. The current height position of the desk will then be saved to the corresponding number key. After the memory position is set, directly press any one of “1”, “2”, or “3”, and the desk will automatically move to the memorized position corresponding to the pressed key. During the process of the desk recalling the memory position, pressing any key can stop the operation.

4. Stroke Reset

Press and hold the “V” key until the desk legs stop. After 5 seconds, the controller will display “RSE”, and the reset will start. The desk legs will slowly descend to the lowest position and rebound a certain distance. Release the “V” key to end the reset operation.

5. Power-Saving Mode

If no button is pressed for a long time, the screen will turn off. When any button is pressed, the screen will turn on again.

6. Lock Mode

Press and hold both the “^” and “V” keys for 5 seconds. When the controller displays “LOC”, it indicates that the system is locked and cannot perform lifting operations. When in the locked state, press and hold both the “^” and “V” keys again for 5 seconds. When the controller display changes from “LOC” to the normal digital display, it indicates that the system has been unlocked.

7. Sensitivity Adjustment

Press keys 1 and 2 simultaneously. After three seconds, the sensitivity values “OFF”, “L (low)”, “N (normal)”, and “H (heavy)” will appear. Set the target sensitivity value and release the keys to complete the setting. If you need to adjust the next target sensitivity value, just follow the same operation sequentially.

8. Fault Code

Protection Mode Error Codes	
Hot	Overheat Protection: When the motor runs continuously, it will stop working to prevent damage caused by overheating. Please wait for a period of time before making any further height adjustments.
E10	Sensor Fault Warning: The motor safety sensor cannot be detected. Please turn off the power, unplug the controller cable, wait for 5 minutes, then reinsert the cable and reconnect the power, and then perform the rSE setting again.
E20	Overload Warning: Exceeding the maximum load. Turn off the power, remove items from the table, turn it back on, and then try again.

E02	Operation Status Warning: If vibration, impact, or tilt is detected, the table will stop moving. If this detection is incorrect, please follow the reset instructions before continuing to use it.
E32	Overvoltage Protection: Input voltage is too high. If using the correct AC adapter, please turn off the power first, unplug the controller cable, wait for 5 minutes, then plug the cable back in and connect the power, and then perform the RSE setting.
E31	Undervoltage Protection: Input voltage is too low. If using the correct AC adapter, please turn off the power first, unplug the controller cable, wait for 5 minutes, then plug the cable back in and connect the power, and then perform the RSE setting.
-	Cable Disconnection Warning: Please turn off the power first, unplug the controller cable, wait for 5 minutes, then plug the cable back in and connect the power, and then perform the RSE setting.

Light strip

Preparation before Installation

Before installation, please carefully read the instructions for this type. Check whether the light strip, power adapter, controller (if any), and connecting wires are in good condition, without extrusion, cuts, or exposed wires.

Confirm that the output voltage (V), current (A), or power (W) of the power adapter fully matches the rated input parameters of the light strip. **Strictly prohibit use with overvoltage or overpower!**

Confirm that the type of the controller (RF remote control, WiFi, Bluetooth, DMX, etc.) is consistent with your needs and compatible with the light strip (in terms of voltage and signal protocol).

Instructions for Use

(1) Operate the on/off function, dimming, color adjustment, and mode switching according to the controller's instructions. Avoid prolonged full – power operation in extremely high – temperature environments (such as direct sunlight without heat – dissipation measures) or enclosed, poorly ventilated spaces.

(2) Unless necessary, **Do not** frequently turn the power on and off. Avoid pulling, squeezing, or folding the light strip, as this may cause circuit breaks and render the light source inoperable.



Notes

- **Stay away from all water sources:** Use the light strip away from water sources or humid environments.
- **Strictly prohibit live – line operation:** All installation, cutting, connection, and maintenance must be carried out when the power is off.
- **Power adapter:** Be sure to use the original or high – quality power adapter with strictly matching parameters.

- **Pay attention to temperature:** It is normal for the light strip to feel slightly warm when working. But if it feels scalding hot ($> 50^{\circ}\text{C}$), it indicates poor heat dissipation or overload. You must immediately cut off the power and check (installation environment, power matching, whether there is a local short circuit).
- **Professional installation:** For complex installations (such as long – distance, high – power, special environments) or if you lack electrical knowledge, it is recommended to seek the help of a professional electrician.
- **Child safety:** Keep children away from this component; Prevent children from biting, swallowing, or wrapping it around their bodies.



Maintenance Methods

(1) **Cleaning Method:** Before cleaning, be sure to disconnect the power supply and wait for the light strip to cool down. Use a dry or slightly damp soft cloth to gently wipe dust and stains on the surface of the light strip. The surface of the encapsulated glue is relatively easy to clean. It is strictly forbidden to use corrosive chemical cleaning agents (such as strong acids, strong alkalis, alcohol, gasoline, thinner, etc.), abrasives, steel wire balls and other hard objects for wiping, so as not to damage the surface finish, transparency of the encapsulated glue layer or cause aging and cracking. **Do not** soak the light strip in water for cleaning!

(2) **Inspection and Maintenance:** Regular inspection (recommended quarterly or semi – annually): Check whether the light strip has physical damage (such as cuts, indentations, colloid cracking, degumming). Check whether all connection points (joints, solder joints, power interfaces) are firm, free of rust, and free of water ingress marks. Check whether the waterproof measures (end caps, connector seals, sealant) are in good condition and not aged and ineffective. Check whether the fixing devices (back glue, buckles, cable ties) are loose or fallen off.

Lifting motor

Preparation before Installation:

If the motor has a slight mechanical odor, place it in a well-ventilated area to disperse the odor before installation.

Instructions for Use

(1) Use the motor within the rated load and voltage range, and adjust parameters such as lifting stroke and speed according to the instruction manual.

(2) Start and stop smoothly; avoid frequent sudden stops and starts to reduce motor wear and tear.



Notes

- **Product Integrity Assurance:** Prevent collisions and drops that may damage the motor casing and internal structure; also, avoid hard objects scratching the motor's heat-dissipating parts.
- **Keep Away from High Temperature and Fire Sources:** Avoid direct sunlight and stay away from heat sources to prevent the motor from overheating and burning out.
- **Load – Bearing Limit:** Strictly use within the rated load. Avoid overloading, which may cause motor damage and safety hazards.
- **Heat Dissipation Protection:** Ensure good ventilation of the motor's heat-dissipation holes and prevent blockage by debris.
- **Installation Precautions:** Install the drive shaft in the correct direction and ensure that the connections between the drive shaft and the lifting table legs on both sides are fully inserted.



Maintenance Methods:

After powering off, use a dry and soft cloth to wipe the dust on the motor surface. A soft brush can be used to clean the heat dissipation holes. **Do not** rinse with water. Regularly check whether the motor is firmly fixed and whether the connection wires are loose.

After-Sale Support

Dear Customer,

Thank you for choosing to purchase our products! We attach great importance to your shopping experience and hope to ensure that you are satisfied with this purchase.

Should you have any questions, please contact us through the original purchase platform. We will reply your messages as soon as possible, please kindly wait for the response from our team.

Thank you again for your understanding and support! If you have any other questions, please feel free to contact us at any time.

Best Regards,
After sales service team