

User Manual

3D Octagon Infinity
Mirror Light



Thank you for shopping , we really appreciate your business. Our goal is to provide an excellent customer service before, during and after delivery. We've included a guide on how to install this light, should you require additional assistance please feel free to email us and one of our customer service reps will reach out to assist you.

BEFORE YOU GET STARTED

When working with electrical wiring, follow these safety instructions to prevent injury or damage:

1. Turn off the power: Before starting any work, turn off the power to the area you will be working in.
2. Use appropriate tools: Only use tools designed for electrical work and in good condition.
3. Wear protective gear: Wear safety glasses, gloves, and other protective gear as necessary.
4. Test for power: Use a non-contact voltage tester to check for electrical current before touching any wires.
5. Avoid wet conditions: Do not work with electrical wiring in wet or damp conditions.
6. Keep a safe distance: Stay away from exposed wires or electrical components.
7. Seek professional help: Consult a qualified electrician if you are unsure about any aspect of electrical wiring or encounter any problems.



WARNING!

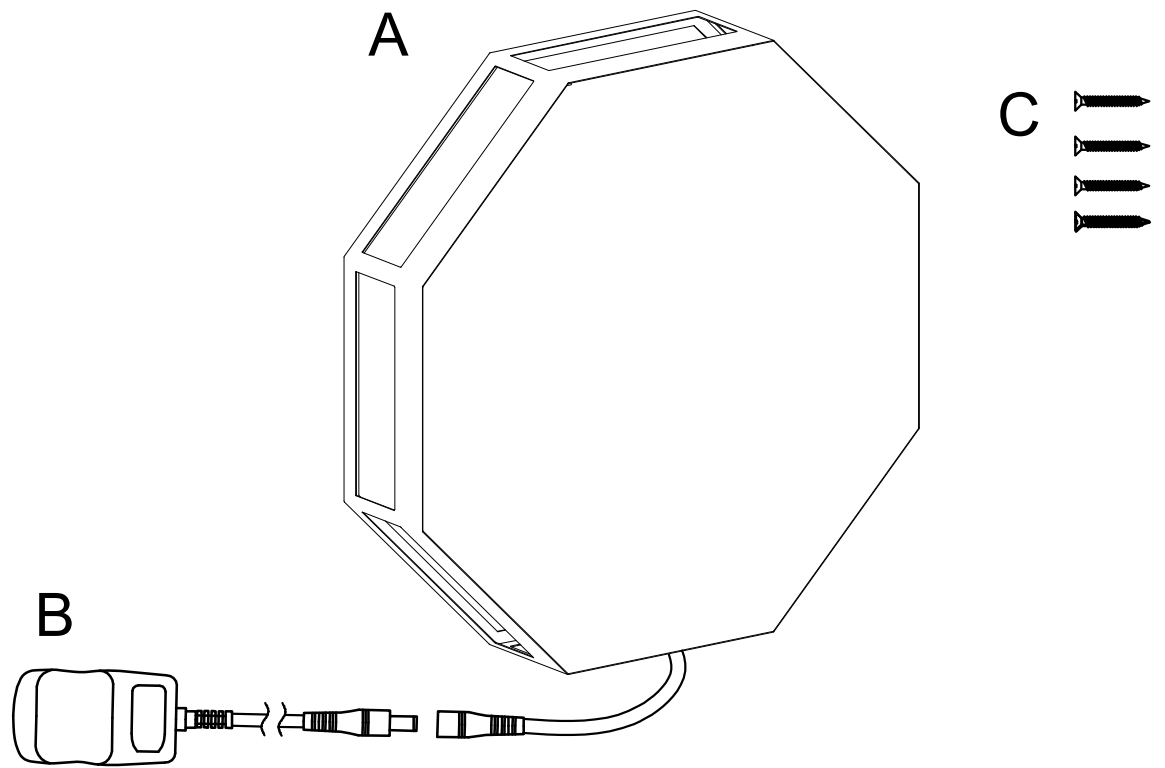
1. Do not use the power supply beyond the specified range (100-240V).
2. Avoid scratching the surface and wires of the light during installation.
3. Do not install the light outdoors.
4. The light should not be close to corrosive chemical objects or gases.
5. It should not be washed with water. It can only be wiped with a clean soft cloth.



Assembly Inventory:

Please check the assembly inventory. If you find anything missing, reach out to our customer service team.

- A - 1 x Lamp Body
- B - 1 x LED Driver
- C - 4 x Screws



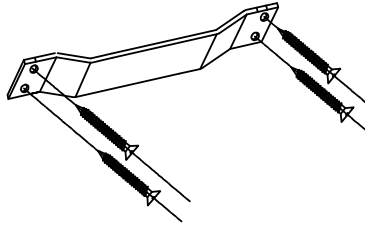


Fig. 1

Step 1:

Utilize the screws to secure the mounting plate onto the wall, following the guidance presented in Figure 1.

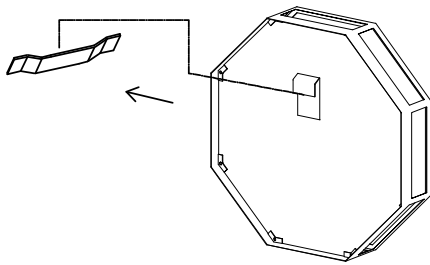
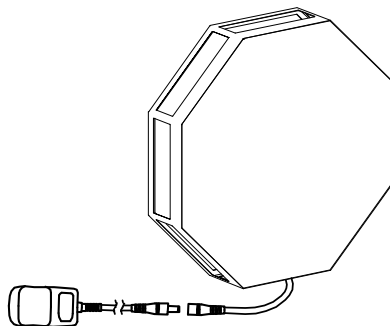


Fig. 2

Step 2:

Hang the metal frame into the mounting plate as shown in Fig.2



Step 3:

Take out the adaptors and chose one plug you need, and connect the adaptor wire with the mirror lamp.





Turn on/off Function:

1. Press on the button to use the on/off function
2. Press and hold for 5 seconds for code clearing/code checking function

Play/Pause Function:

When the light belt is turned on, press color ring monochrome or phantom static color will enter the auto playing mode. In dynamic mode, press the button to pause

Press and hold for 5 seconds pause button for 5 seconds when the light belt is off, and then enter the light belt line sequence and count setting mode:

- Model +/-: Adjust the Line sequence
- Speed +/-: Adjust the points

After adjusting the line sequence to red, green, and blue, press on/off button to save.



Color temperature cycle: Tap or slide the color ring to change colors.

Lighting mode: Press the button to enter the lighting mode.

Timed shutdown: Press the button to set the timer shutdown time, and the white light flashes 1/2/3/4/5 times respectively corresponding to the timer 1/2/3/4/5h, and the timer is untimed.

Mode +/- : Press +/- to switch the magic color mode, a total of 200

Music Mode:

Tap into music mode, press again to switch music mode Color ring and mode +/- exit music mode

Press and hold for 5 seconds this will force Wi Fi into disconnect mode

Brightness +/- : Press the button to adjust the brightness, a total of 16 gears

Speed +/- : Press the button to switch the speed of magic color mode, a total of 10 gears.

Sensitivity +/- : Press the button to add or subtract the sensitivity of music mode

Wi-Fi Instruction Manual

1. Basic parameters

1. Supply voltage: 5-16V
2. Remote control distance: >10m
3. WiFi connection distance: >20m



1. Download the app from the app store
2. Open APP (Bluetooth function of mobile phone can be turned on when WIFI is configured)
3. Add device method

Method 1: Open the APP and find the device to be added → go to add → select the WIFI and password of the device to work → add successfully → complete

Method 2: Open APP → "add device" or "+" sign in upper right corner to add device → automatic device discovery → select device working WIFI and password → add successfully → complete

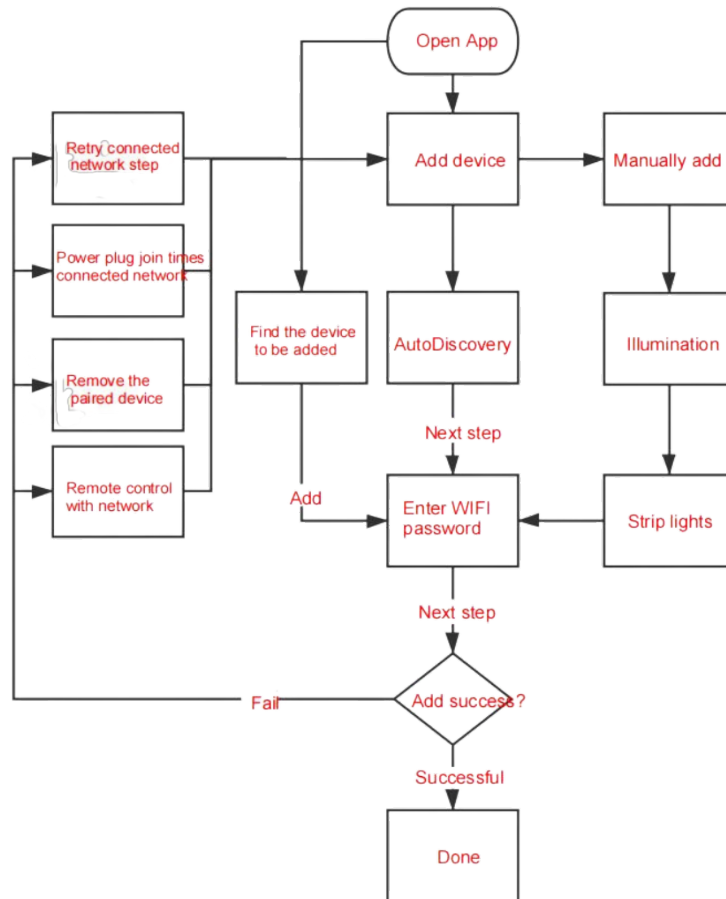
Method 3: Open APP → "Add device" or "+" sign on the upper right corner to add device → lighting → WIFI → select WIFI and password for the device to work → add successfully → complete

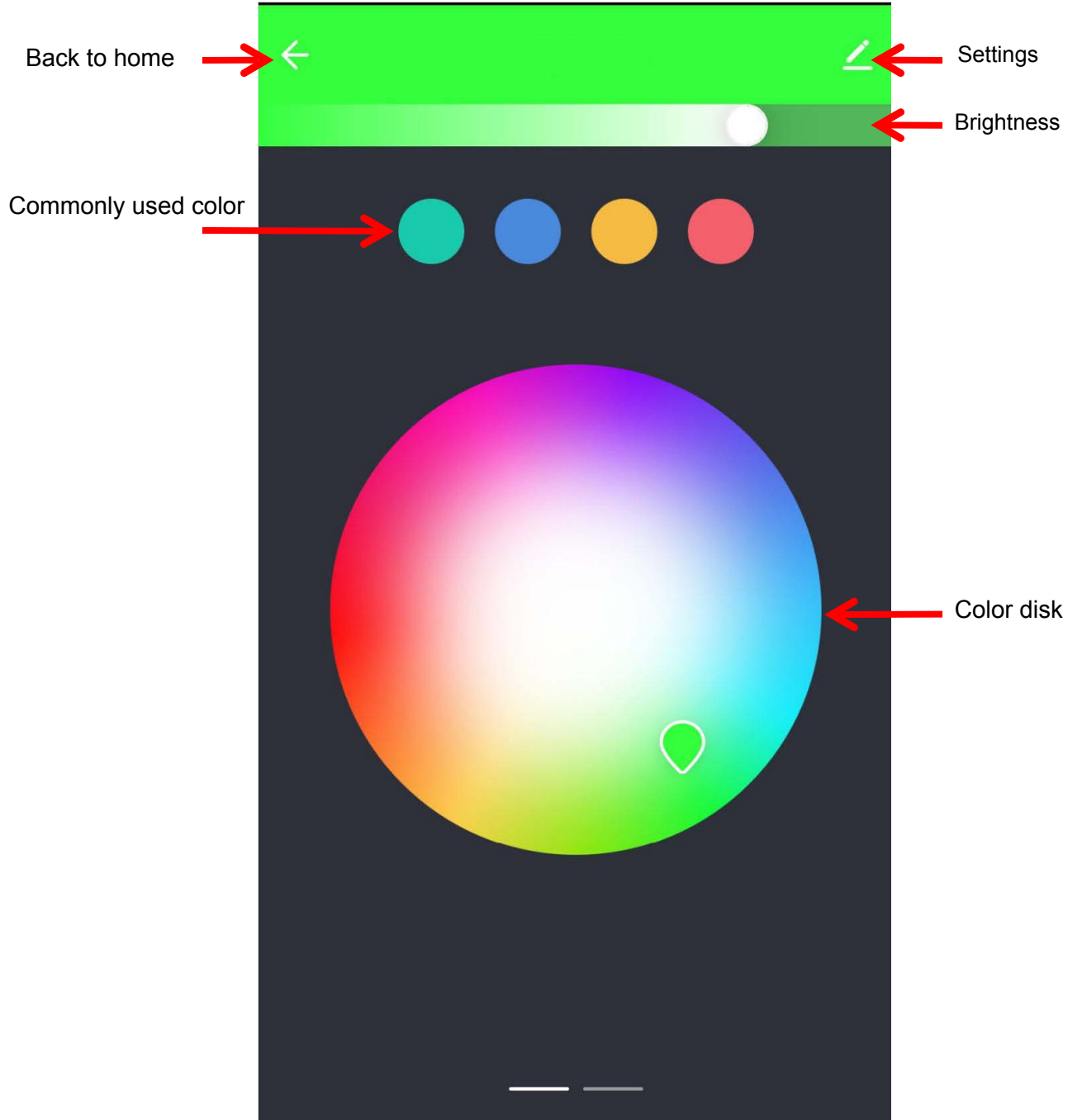
Troubleshooting:

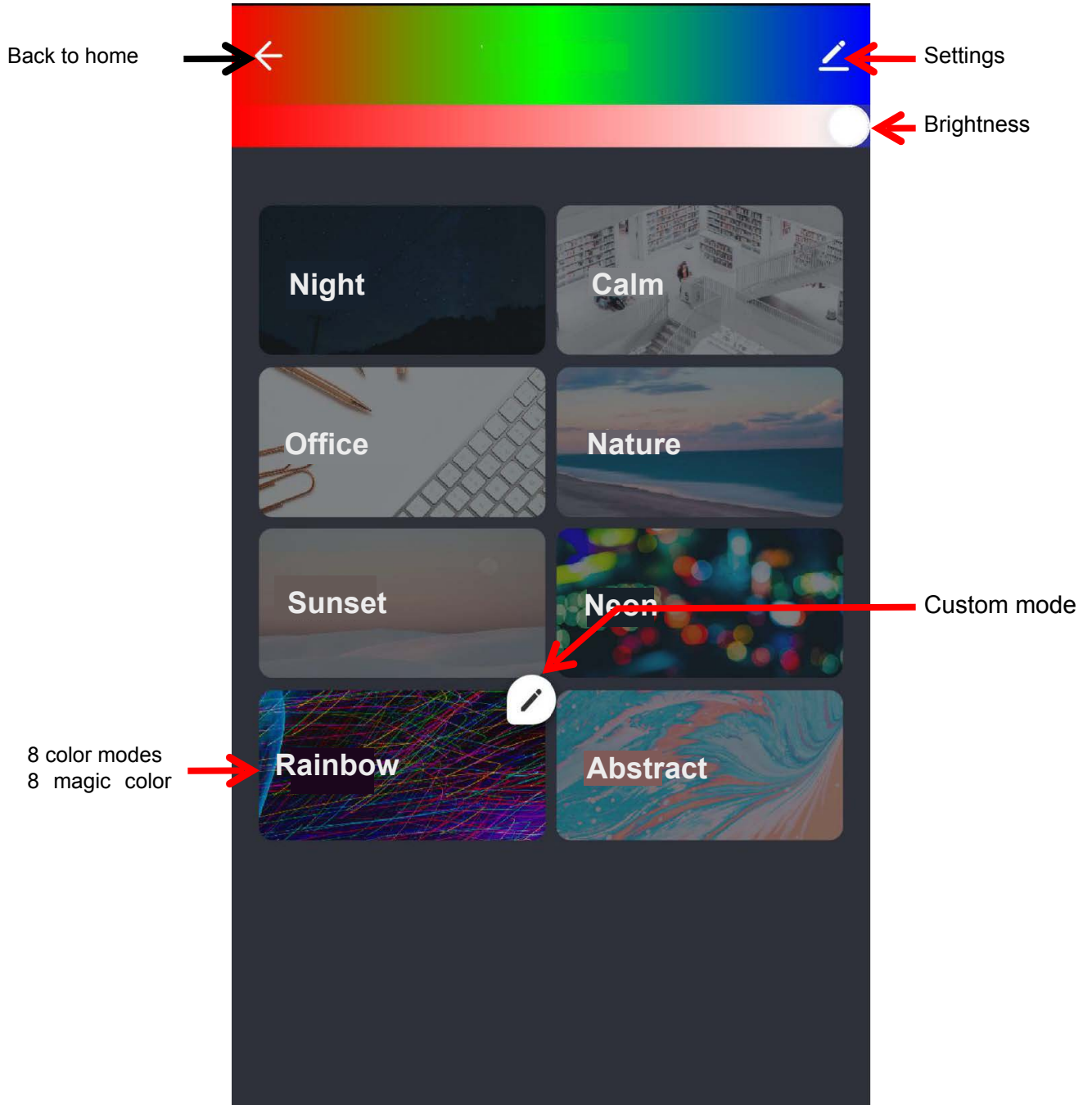
1. Try matching network again
2. Remove the paired device
3. Remote control with network
4. Power plug and unplug 3 times forced distribution network

Note: The distribution network does not support 5G networks

NETWORK FLOW CHART







Back to home



Settings



External Mic

External microphone



Back to home



Settings



Close after 02:13



Set the switching time

