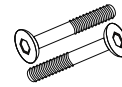


ASSEMBLY INSTRUCTIONS

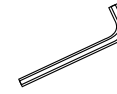
DESK

ASSEMBLY INSTRUCTIONS

DESK



(A) 8x Allen Bolt
Flat Head M6 6x40mm

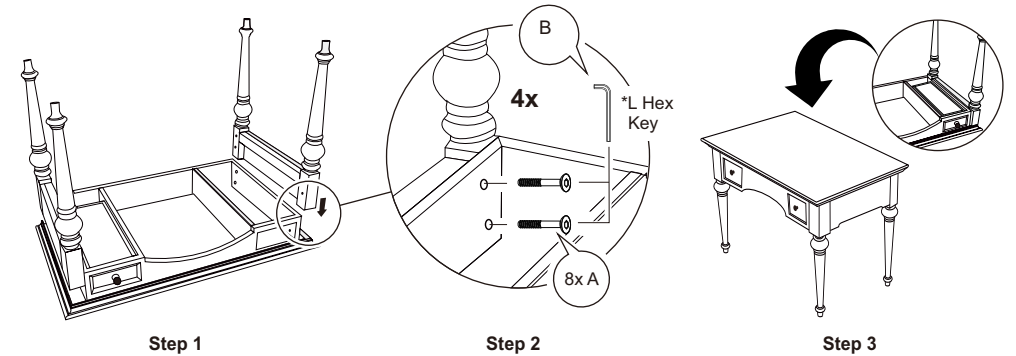
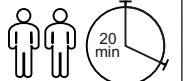
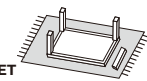


(B) 1x L Hex Key 4"

Prepare for Installation

- Ensure the product is on a flat, level surface. Features may not function properly on sloped or uneven surfaces.

TO AVOID
DAMAGES,
PLEASE
ASSEMBLE
ON A CARPET
OR RUG




WARNING

Always use the proper tools during assembly and follow the steps in order—DO NOT skip any steps. Carefully check all packing materials for assembly hardware. If any parts are missing, contact the retailer from which you purchased the product to obtain replacements. **DO NOT USE SUBSTITUTE PARTS.** When assembling, tighten screws by hand initially. Once all screws are in place, use the provided tool for final tightening. Periodically check that all hardware (bolts, screws, etc.) is secure. **DO NOT STAND ON THE PRODUCT DURING ASSEMBLY.** If the instructions indicate that assembly requires two or more people, **DO NOT ATTEMPT TO ASSEMBLE IT ALONE**, as this poses a risk of injury.