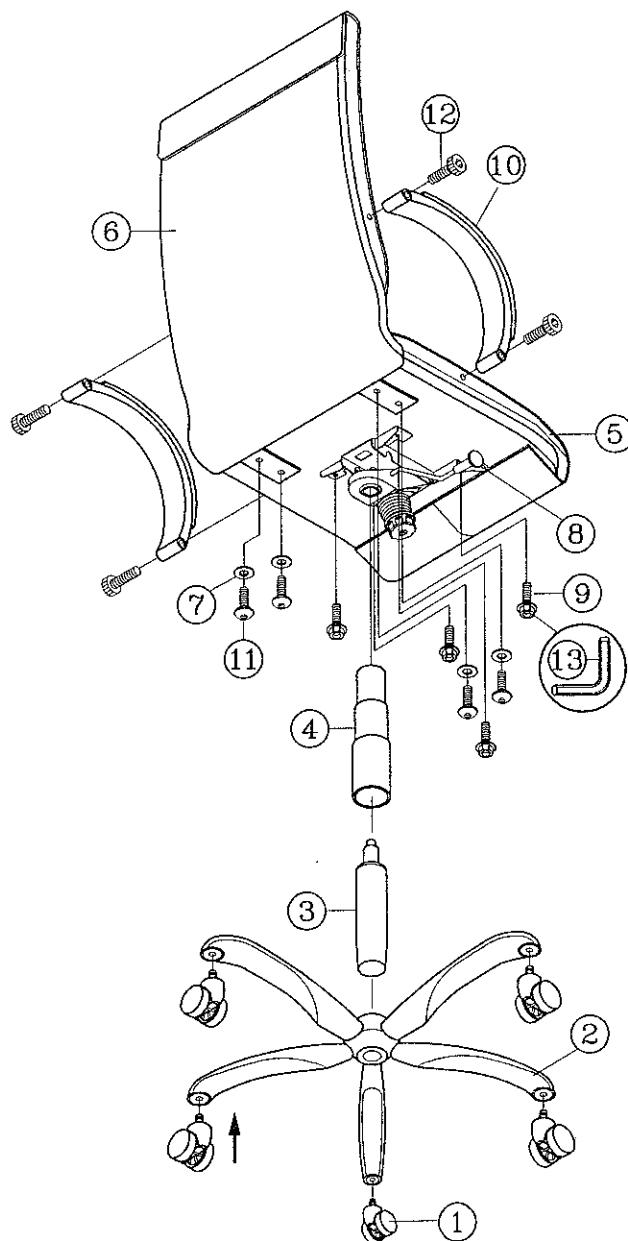


OFFICE CHAIR

PART LIST

KEY QTY DESCRIPTION

1	5	Caster
2	1	Base
3	1	Seat Post
4	1	Seat Post Cover
5	1	Seat
6	1	Backrest
7	4	Washer
8	1	Mechanism
9	4	Mechanism Screw
10	2	Armrest
11	4	Metal Backrest Screw
12	4	Arm Screw
13	1	M5 Size Allen Wrench

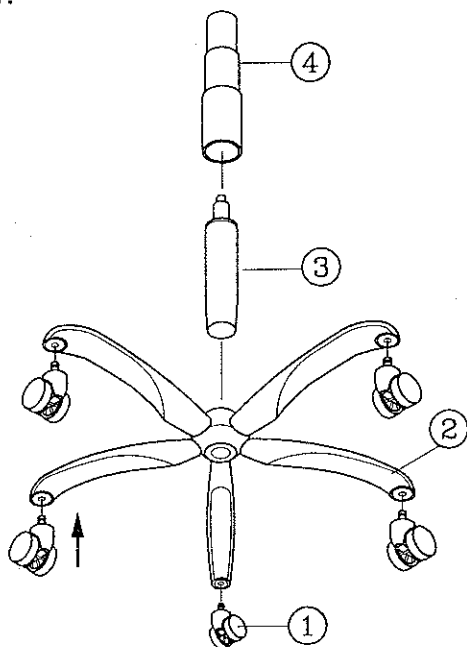


LIMITED WARRANTY

ASSEMBLY INSTRUCTION

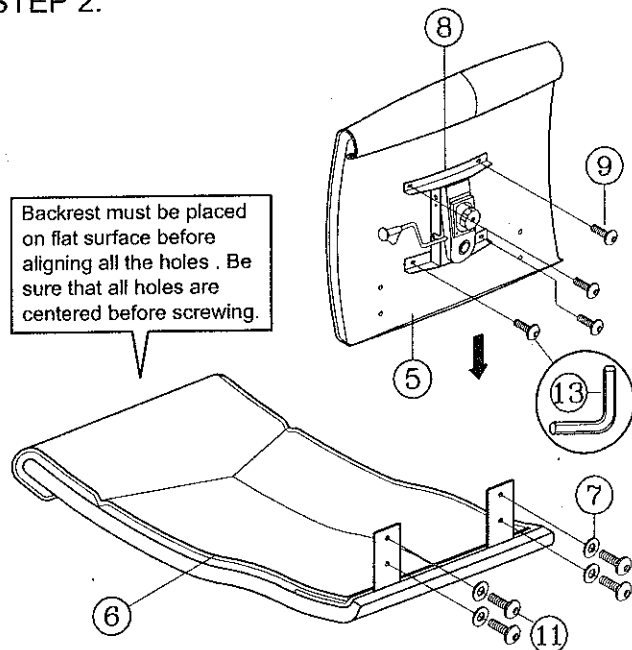
Remove all items from the carton . Verify all pieces before assembly.

STEP 1.

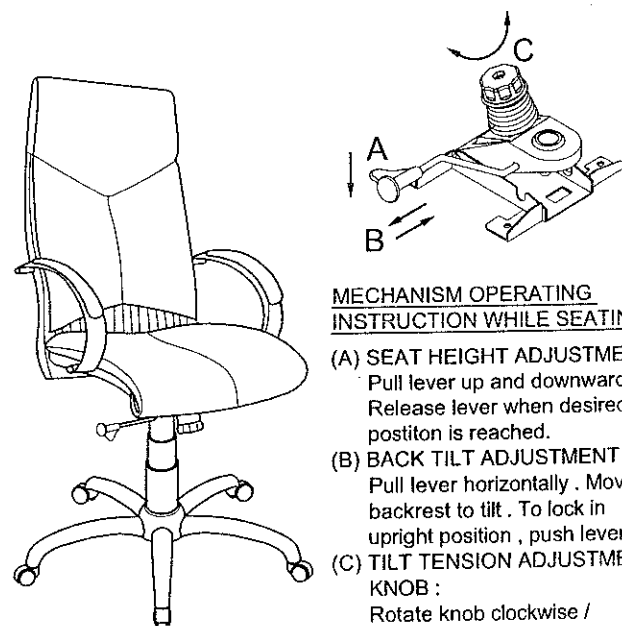
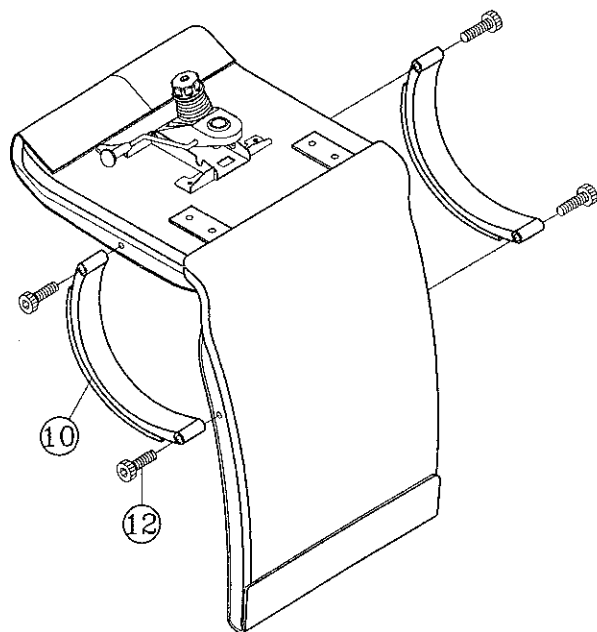


STEP 2.

Backrest must be placed on flat surface before aligning all the holes . Be sure that all holes are centered before screwing.



STEP 3.



MECHANISM OPERATING INSTRUCTION WHILE SEATING :

- (A) SEAT HEIGHT ADJUSTMENT : Pull lever up and downward . Release lever when desired position is reached.
- (B) BACK TILT ADJUSTMENT : Pull lever horizontally . Move backrest to tilt . To lock in upright position , push lever in.
- (C) TILT TENSION ADJUSTMENT KNOB : Rotate knob clockwise / counterclockwise to adjust tilt tension based on body weight.

PREVENTIVE MAINTENANCE AND WARNING!

- USE THIS PRODUCT ONLY FOR SEATING ONE PERSON AT A TIME.
- DO NOT USE THIS CHAIR AS A STEP STOOL / LADDER.
- DO NOT SIT ON ANY PART OF THE CHAIR EXCEPT THE SEAT.
- DO NOT USE CHAIR ON UNEVEN FLOOR SURFACES.
- DO NOT USE CHAIR UNLESS ALL BOLTS, SCREWS AND KNOBS ARE TIGHT. AT LEAST EVERY SIX MONTHS, CHECK ALL BOLTS, SCREWS AND KNOBS TO BE SURE THEY ARE TIGHT.

- IF ANY PARTS ARE MISSING, BROKEN, DAMAGED OR WORN, STOP USE OF THE PRODUCT UNTIL REPAIRS ARE MADE USING FACTORY AUTHORIZED PARTS.
- DISPOSE OF PACKAGING PROPERLY. PLASTIC BAG IS NOT A TOY. DO NOT USE PLASTIC BAG AS HEAD COVERING - IT MAY CAUSE SUFFOCATION.
- FAILURE TO FOLLOW THESE WARNINGS COULD RESULT IN SERIOUS INJURY.