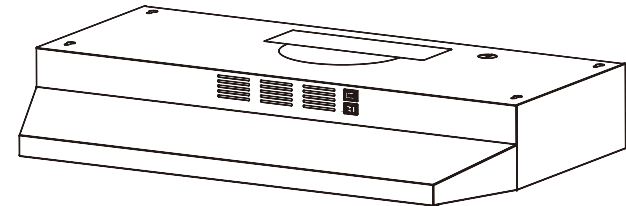


# VIKIO

HOME

PURE AIR. CLEAN KITCHEN.



# VIKIO

HOME

info@vikihome.com    www.vikihome.com

## INSTALLATION USER MANUAL

info@vikihome.com / www.vikihome.com

Model Name: RC15    Available Sizes: 30"



## CONTENT

Introduction.....	2
Safety Precaution .....	2
Parts Diagram .....	3-4
Installation Instructions .....	4-5
Installation .....	6-8
Operation .....	8
Maintenance .....	9-10
Trouble-Shooting .....	11
Environmental Protection .....	11

## Introduction

Thank you for choosing this range hood.

- This instruction manual is designed to provide you with all required instructions related to the installation, use and maintenance of the appliance.
- In order to operate the unit correctly and safely, please read this instruction manual carefully before installation and usage.

## Safety Precaution

- Never let the children operate the machine.
- The range hood is for home use only, not suitable for barbecue, roast shop and other commercial purpose.
- Clean the range hood according to the instruction manual and keep the unit from danger of burning. There is a fire risk if cleaning is not carried out in accordance with the instructions.
- Please keep the kitchen room a good convection before connecting this appliance; Please check that the power supply cord is undamaged. A damaged supply cord must be replaced by qualified service personnel only.
- Regulations concerning the discharge of air have to be fulfilled.
- This appliance can be used by children aged from 8 years and above also the persons with reduced physical, sensory or mental capabilities or lack of experience and knowledge if they have been given supervision or instruction concerning use of the appliance in a safe way and understand the hazards involved. Children shall not play with the appliance. Cleaning and user maintenance shall not be made by children without supervision.
- If the supply cord is damaged, it must be replaced by the manufacturer, its service agent or similarly qualified persons in order to avoid a hazard.

### CAUTION:

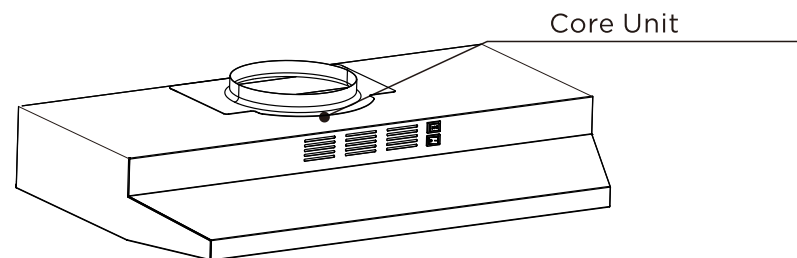
Accessible parts may become hot when used with cooking appliance.

Electrical Shock Hazard

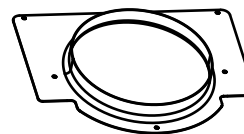
Only plug this unit into a properly earthed outlet.

If you have doubts, seek advice from a suitably qualified engineer.

## Parts Diagram



### Parts Supplied



Air Outlet



Recirculation Sheet :

1. If you choose ventilation mode must need to install this sheet.
2. If you choose recirculation mode, please make sure to NOT install this sheet into the body.



×6

St4×30



×6

φ 8×35



×6

St4×16



×8

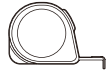
St4×6

(2 screws extra)

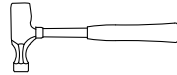
## Tools Required



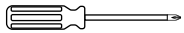
Pencil



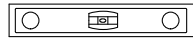
Measuring tape



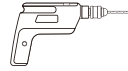
Hammer



Screwdriver



Level



Electric drill



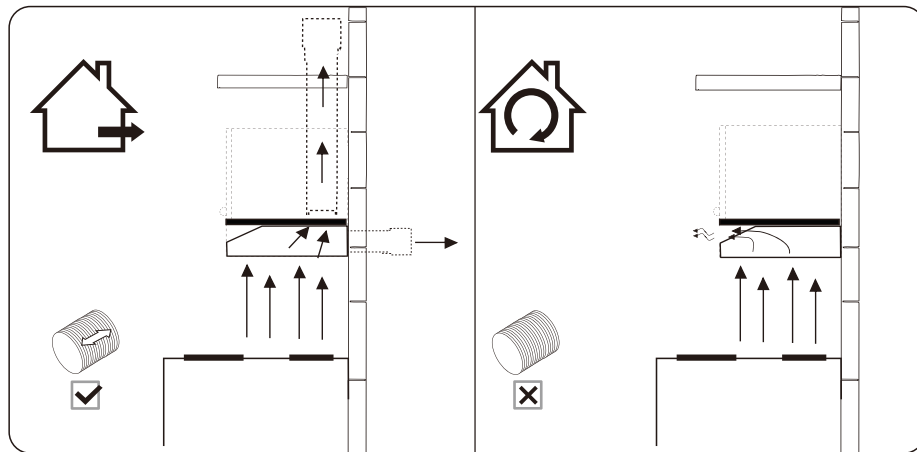
Duct Tape



Gloves

## Installation Instructions

### Prepare for installation:

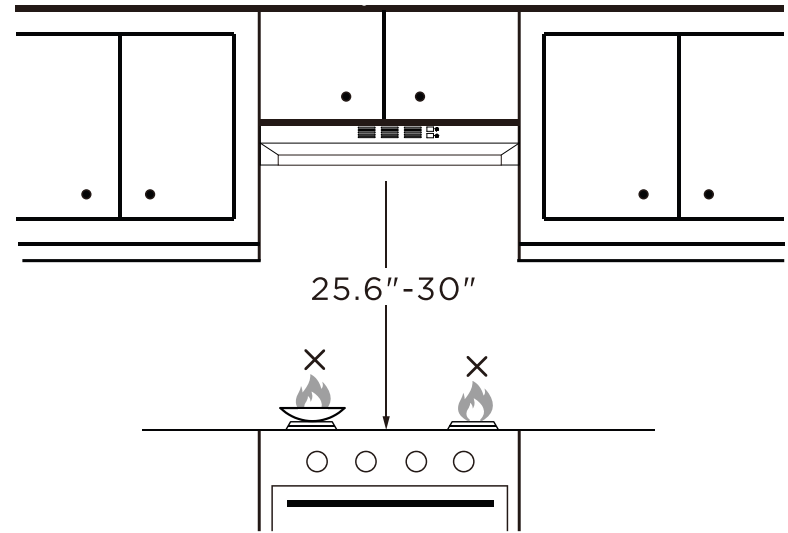


VENTILATION OPTION

RECIRCULATION OPTION

If you have an outlet to the outside, your range hood can be connected as above picture by means of a pipe (with an interior diameter of 120mm). If you don't have an outlet to the outside, you can go with recirculation mode .

## Installation Requirements



The range hood should be placed at a distance of 25.6"~30" above the cooktop for the best effect.

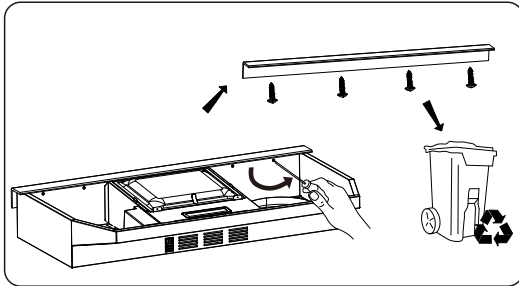


Note

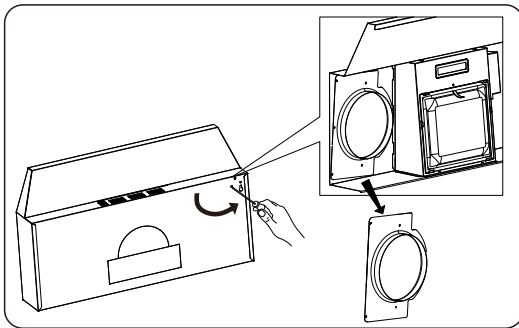
No open flames directly approach to the range hood.

# Installation

**i** Please connect the power supply to test and confirm that the power is on before installing this under cabinet range hood.



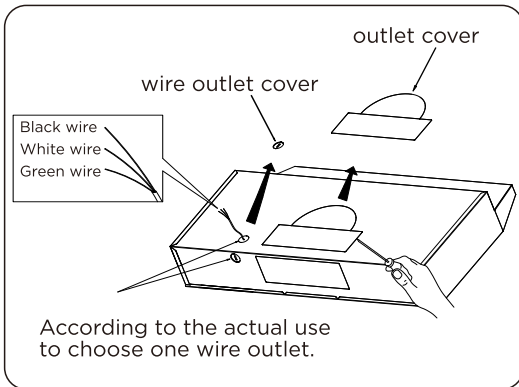
1. Disassemble the corner bead.



2. Disassemble the round outlet.

**Recirculation:** Factory default is recirculation mode.

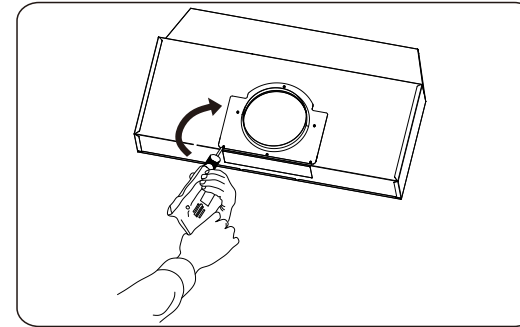
**Ventilation:**



3. Use screwdriver and plier to peel off the outlet cover and wire outlet cover. Then let the cable across the hole.

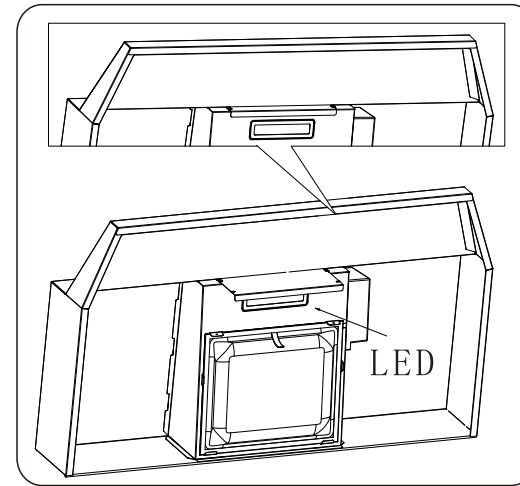
( PS: No necessary to peel the outlet off if you use recirculation mode)

If you use back rear outlet, please buy the outlet from local market.



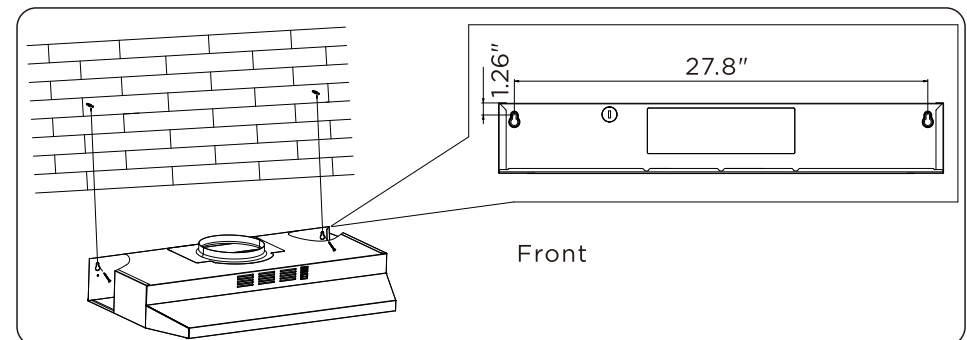
4. Install the outlet with ST4\*6 screws.

Scan for a Air Outlet installation tutorial video.

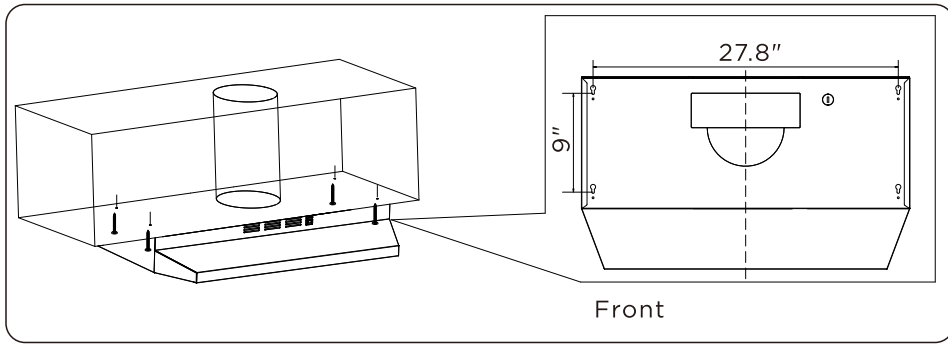


5. Insert the recirculation sheet in the gap between the housing and body.

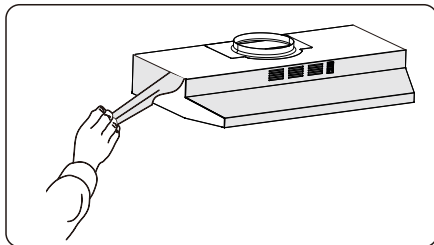
**Two ways for installation (A & B) Ventilation and Recirculation available.**



A: Drill the holes according to the graphic distance, plug the expand tube and screwed with 2pcs ST4\*30 screws.



B: Drill the holes according to the graphic distance, plug the expand tube and screwed with 4pcs ST4\*30 screws.



**CAUTION:**  
**BEFORE USE**  
 Please remove the white/blue protective film on the range hood (for SS surface).

## Operation

### 2 Speed Rocker



Light button  
 On the left side of hood.



Speed button  
 On the right side of hood.  
 “≡”: high speed level.  
 “—”: Low speed level.  
 “○”: Off

## Maintenance

Before cleaning switch the unit off and pull out the plug.

### I. Regular Cleaning

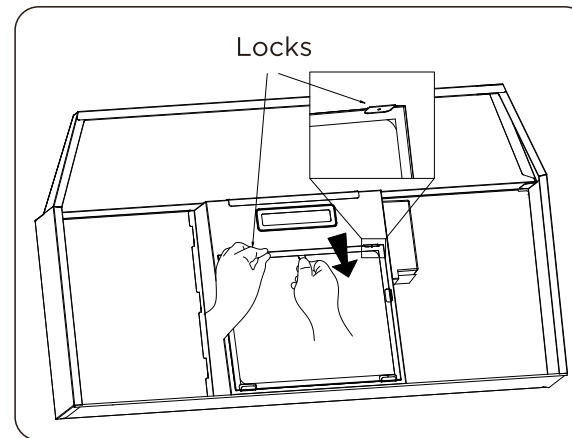
Use a soft cloth moistened with hand-warm mildly soapy water or household cleaning detergent. Never use metal pads, chemical, abrasive material or stiff brush to clean the unit.

### II. LED Light Replacement

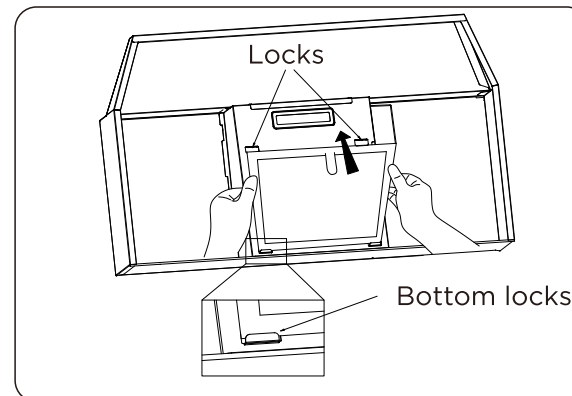
Switch the unit off and unplug the appliance.

**CAUTION: LAMP UNIT MAY BE HOT!**

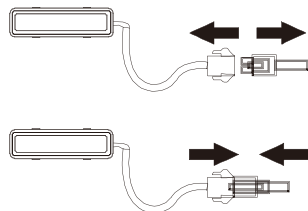
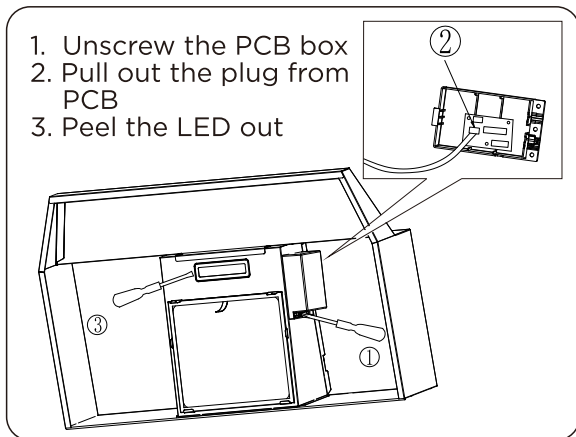
**WAIT UNTIL THE UNIT IS COOL. BEFORE** attempting to replace the LED lamps make sure the unit is powered off and **UNPLUGGED.**



Disassemble the filter:  
 Pull out the plastic handle and the filter from the left and right locks.

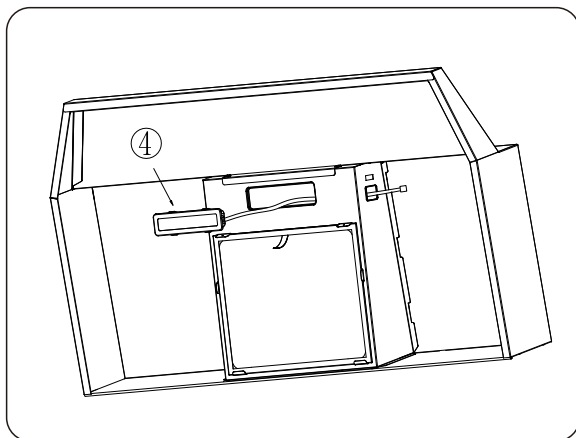


Install the filter:  
 Install the filter firstly into the bottom lock and then stick the filters into the upper locks.



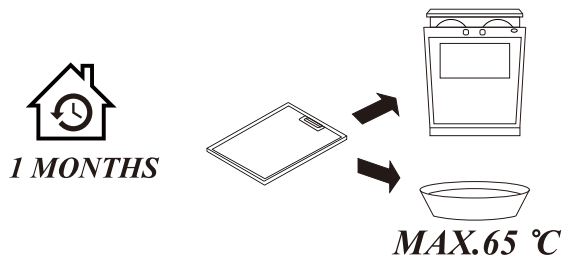
Pull out the LED wires and replace a new one

Scan for a light bulb installation tutorial video.



### III. Filter and charcoal filters replacement

In order to install the carbon filter, the grease filter should be detached first. Press the lock and pull it downward.



## Trouble-Shooting

Fault	Cause	Solution
Light on, but fan does not work	The fan blade is jammed.	Switch off the unit and repair by qualified service personnel only.
	The motor is damaged.	
Both light and fan do not work	Light is burnt out.	Replace the LED light with correct rating.
	Power cord is loose.	Plug into the power supply again.
Serious Vibration of the unit	The fan blade is damaged.	Switch off the unit and repair by qualified service personnel only.
	The fan motor is not fixed tightly.	
	The unit is not hung properly on the bracket.	Take down the unit and check whether the bracket is in proper location.
Suction performance not good	Too far distance between the unit and the cooktop.	Readjust the distance between 25.6"-30"

## Environmental Protection

Waste electrical products should not be disposed of with household waste.

Please recycle where facilities exist.

Check with your Local Authority or retailer for recycling advice.



