

1 2 3 4 5 6 7 8

PLACE THIS SIDE AGAINST LEFT CASING

2

3

4

5

6

7

8

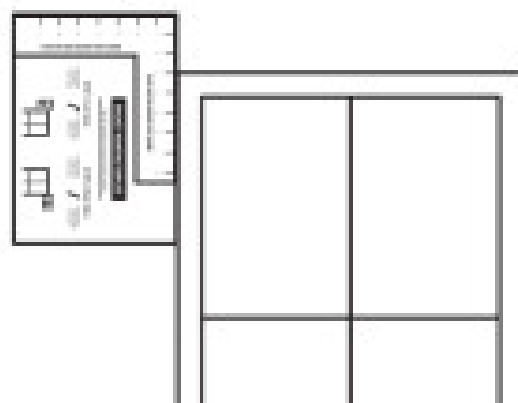
PLACE THIS SIDE AGAINST RIGHT CASING

OPTIONAL BRACKET MOUNTING TEMPLATE

Use this template to measure bracket location

STEP 1 (Left Side)

1. Place template on left side of window casing.
2. Mark desired bracket location with a pencil.



STEP 2 (Right Side)

1. Place template on right side of window casing.
2. Mark desired bracket location with a pencil.

