



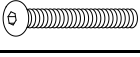

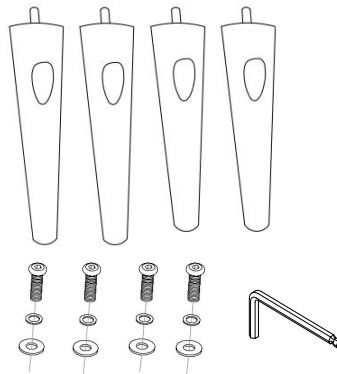


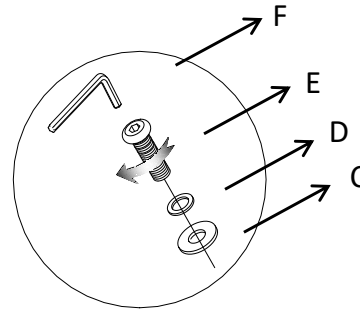
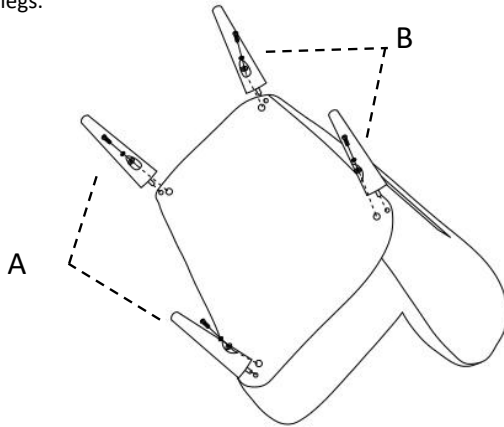
ASSEMBLY INSTRUCTION

PARTS #	Description		QTY
A	Front Legs		2
B	Hind Legs		2
C	Flat Washer M8*18MM		4
D	Flash Washer M8		4
E	Long Bolt 5/16*55MM		4
F	Allen Key 5MM		1

1. Take out the legs. Please take note: On the bottom of the legs, there is a label indicating "front leg" or "back leg".



2. Screw in the legs.



3. Level the chair and place it upright on a level surface. Please note: To level the chair, you may need to add or remove washers from the appropriate legs.

