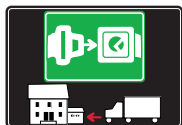




SYMBOLS AND FINISHES LEGEND

SYMBOLS



= SHELF SAFELY LOCKED DURING TRANSPORTATION AND AT HOME.



= ANTI-TURNOVER LOCKING SYSTEM



= NORMS / PATENTS



= PHILLIPS / POZIDRIV



= NEWTON



= PCS. PER PACKAGE



= HEXAGONAL SOCKET



= FRICTION



= CAPACITY LOADING



= BLADE SLOT



= AUTOMATIC



= WOOD / GLASS THICKNESS



= COMBI SLOT



= DROP DOWN



= HOLE DIAMETER



= COUNTERSUNK HEAD



= STANDARD HINGE



= DIAMETER



= PAN HEAD



= KIMANA HINGE



= LENGTH



= FLANGE HEAD



= FLAP HINGE



= HEIGHT



= FLAT HEAD



= TRILOBULAR SCREW



= RIGHT VERSION



= SELF-TAPPING SCREW



= WITHOUT SPRING



= LEFT VERSION



= EURO THREAD



= REVERSED SPRING



= SETTING CODE



= METRIC THREAD



= FOR ROUND TUBE



= PCS. PER PAD



= PRE-INSERTED SCREW



= FOR OVAL TUBE



= CUT ON REQUEST



= PRE-INSERTED SCREW AND SPREADING BUSH



= SELF ADHESIVE



= WITH BUFFER



= WITH FLANGE

NOTE: Printing errors and omissions may exist despite our best efforts to ensure accuracy. We reserve the right to alter specifications without notice.

MATERIALS

ZA = Zinc Alloy	ST = Steel	HSS = High Speed Steel	BR = Brass	ABS = Acrylonitrile Butadiene Styrene
ZAnk = Nickel-plated Zinc Alloy	STzk = Zinc-plated Steel	AL = Aluminium	WD = Wood	EVA = Ethylene Vinyl Acetate

EP = **ENGINEERING PLASTIC**

+ **EP** = other engineering plastic available on request

SR = **SOFT RUBBER**

+ **SR** = other soft rubber available on request

EPn = Natural Engineering Plastic

EPc = Clear Engineering Plastic

SRn = Natural Soft Rubber

EPw = White Engineering Plastic

EPg = Grey Engineering Plastic

SRw = White Soft Rubber

EPwg = Water Green Engineering Plastic

SRb = Black Soft Rubber



FINISHES



= OTHER FINISHES AVAILABLE ON REQUEST

PART. NO	FINISHES	PART. NO	FINISHES	PART. NO	FINISHES
	Natural	JB	Bright Aluminium		Walnut
	White	JC	Aluminium - Chrome		Red
	Opal White	JD	Matt Aluminium		T -Met
	White 9010	JE	Satin-finished Aluminium		Bronzed
	Champagne	JF	Aluminium - Brass		Burnished
	Ivory	JG	Aluminium 5		Satin-finished Steel
	Black	JL	Aluminium PE 11		Nickel-plated
	Glossy Black	JM	Aluminium RAL 9006		Bright Nickel-plated
	Matt Black	KA	Chrome		Matt Nickel-plated
	Anthracite	KB	Bright Chrome		Satin-finished Nickel-plated
	Gunmetal	KC	Matt Chrome		Zinc alloy
	Raw	MA	Brown		Zinc-plated
	Brass-Plated	MB	Light Brown 1		Bright Gold
	Tropicalized	NN	Metallic Beige		Titanium
	Raw Brass	NO	Beige		Clear
	Grey	OA	Oak		Insignificant finish
	Metallic Grey	OZ	Ash		
	Middle Grey	PA	Light Ash		
	Light Grey	PZ	Beech		
	Grey 20	QA	Maple		

SETTINGS



is the innovative family of CABINET HANGERS and WALL PLATES especially conceived to satisfy all the customer's needs. The hangers are to be installed behind the rear panel with the only small cover caps left visible inside the cabinet.

is a very resistant and reliable solution as the zinc-coated steel body is sensibly thicker, and therefore stronger. All the models within the family feature an innovative **ANTI-TURNOVER** device which is covered by patent.

is the left/right cabinet hanger with 3 semi-circular pins + pre-inserted screw for the top (if required).

Also featured in the family are 5 types of wall plates and 1 types of wall bar made of very thick zinc-coated steel and hardened by punched impressions.

Wall bars and wall plates feature oval holes which facilitate the correct positioning and give the possibility to carry out the horizontal adjustment. Placement of the holes for wall-fixation has been optimised to reduce the stress on the plates and on the plugs.

cabinet hangers allow to adjust the cabinet vertically and horizontally. The 2 movements are 100% INDEPENDENT of each other and therefore make the adjustments much easier and more efficient. The adjustment and the locking of the **ANTI-TURNOVER** bolt can be carried out from the inside of the cabinet by using a standard PZ2 screwdriver.

Capacity Loading 70 Kilos per piece

Steel, Zinc alloy and Engineering plastic according to related version.

In accordance with the regulation DIN 68840

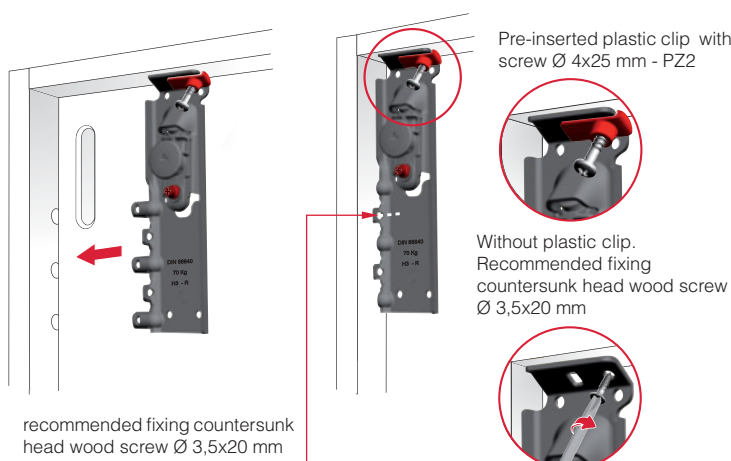
PATENTED



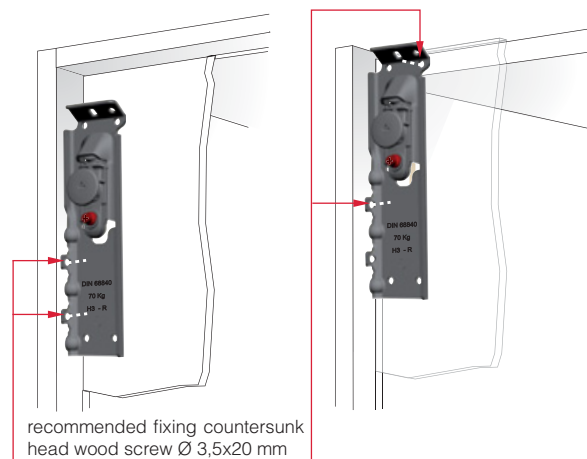
70 Kg per piece



INSTALLATION UNDER THE CABINET TOP



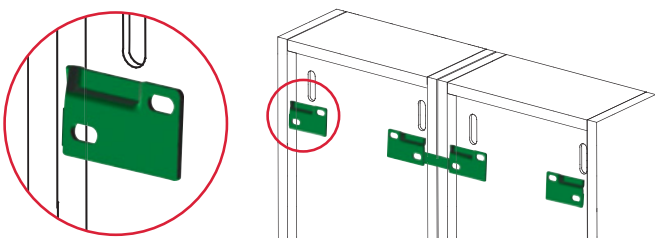
ALTERNATIVE INSTALLATIONS



INSTALLATION ON THE WALL

- For details

WALL PLATES"



It is the responsibility of the customer:

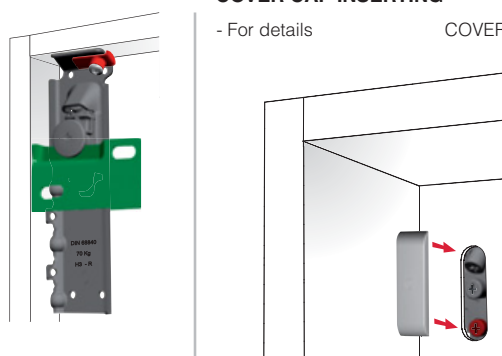
- to ensure that the wall is of a suitable quality to hold the unit fixing in place.
- to use the proper hardware fittings according to the construction of the wall.

For more specific information, please refer to the WARNINGS section at the end of the catalogue.

COVER CAP INSERTING

- For details

COVER CAPS"



ADJUSTMENTS

1

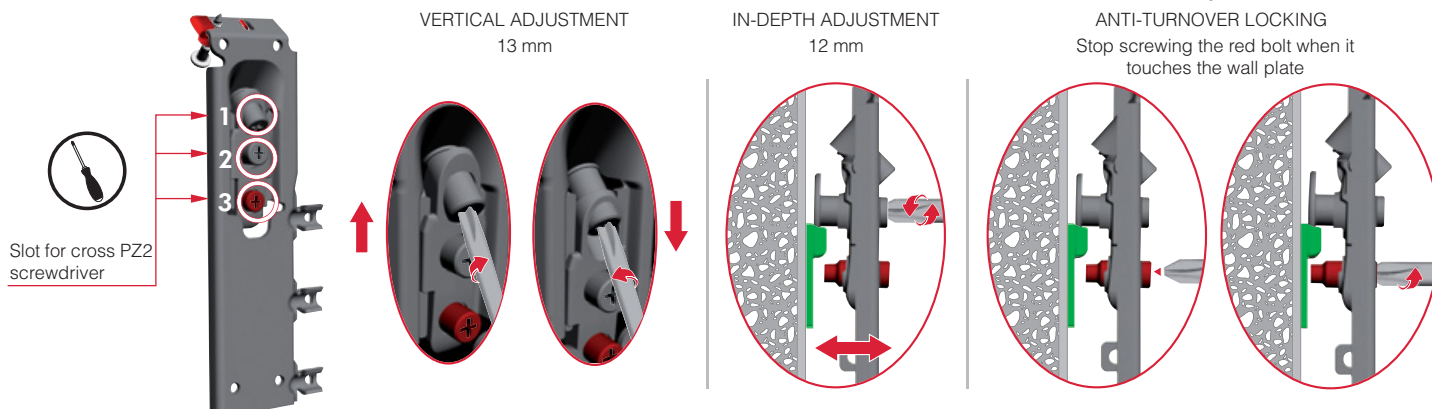
VERTICAL ADJUSTMENT
13 mm

2

IN-DEPTH ADJUSTMENT
12 mm

3

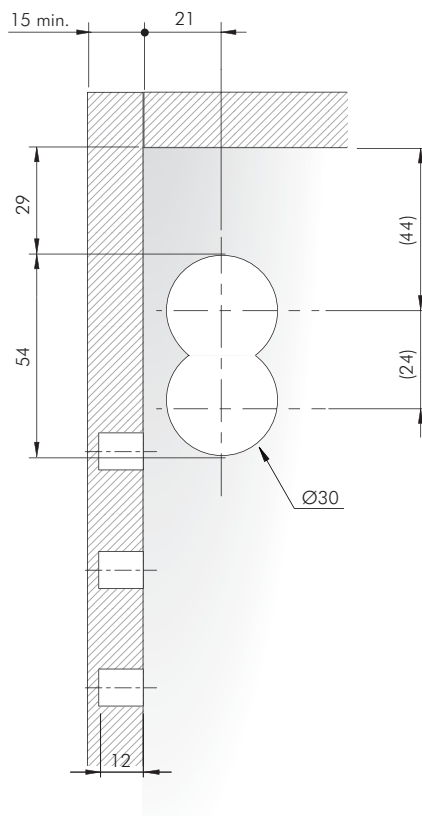
ANTI-TURNOVER LOCKING
Stop screwing the red bolt when it touches the wall plate



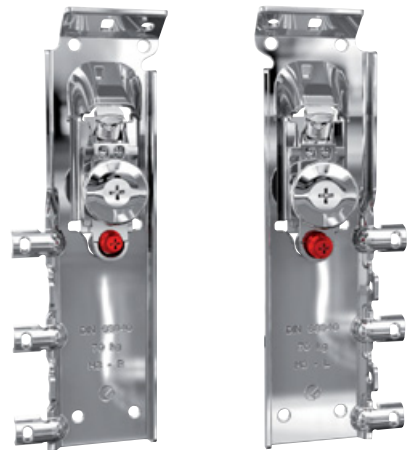
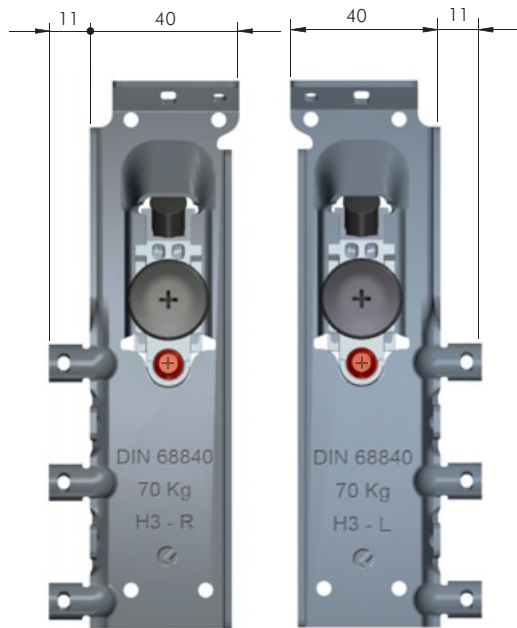
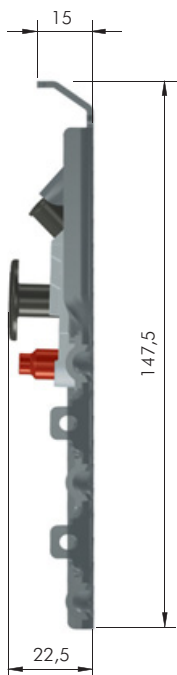
FIXED UNDER THE CABINET TOP

BACK PANEL

cover cap

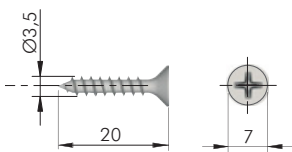


Ⓛ



= PZ2
 ZA ST = 100 pcs.
 R
 L

FIXING ACCESSORY



= PZ2 +
 ST = 8000 pcs.

