



**DV-100**



**DV-105**

## Slimline® Bedpan Washer Diverter Assemblies

**DV-100**  
**DV-105**



### Description

Slimline® Bedpan Washer Diverter Assembly for use in retrofit installations where Flushometers currently are installed and for replacing older in-line type bedpan washers.



### Models

- ☐ DV-100 Standard
- ☐ DV-105 with Deoseptic Unit



### Specifications

Bedpan Washer Diverter Assembly for use with Flushometer with the following features:

- Solid One-piece Body Construction
- Counter Balanced Pivot Assembly
- Solid Brass Spray Arm
- High Back Pressure Vacuum Breaker with One-piece Bottom Hex Coupling Nut
- Wall Support, Spud Coupling and Flange for 1½" Top Spud
- Vacuum Breaker to be molded from PERMEX™ rubber compound for Chloramine resistance

**Diverter Assembly ONLY. Does NOT include Flushometer.**

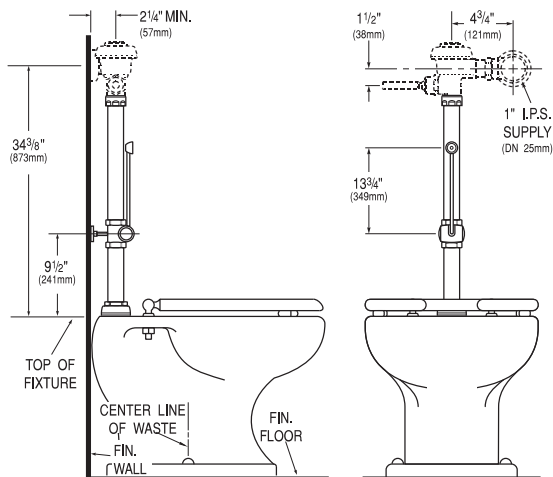


### Variations

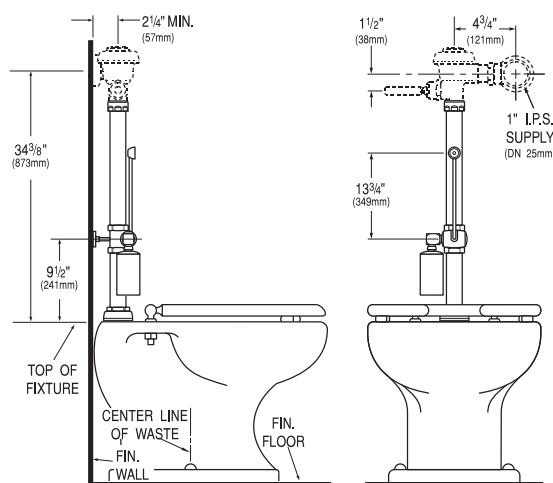
- ☐ **BG** Bio-Gard™ Spray Arm
- ☐ **R** Includes 1" I.P.S. Elbow (to raise existing water supply rough-in) and Pipe Support

See Accessories Section of Sloan catalog for details on these and other Flushometer variations.

**DV-100**



**DV-105**



This space for Architect/Engineer approval

The information contained in this document is subject to change without notice.

Made in the U.S.A.

**SLOAN**

SLOAN VALVE COMPANY • 10500 SEYMOUR AVE. • FRANKLIN PARK, IL 60131  
PHONE: 1-800 982-5839 • FAX: 1-800 447-8329 • <http://www.sloanvalve.com>