

## **TROUBLESHOOTING:**

If your tree does not light up, please check the following.

1. Check that all plugs are properly connected.
2. Check fuse in extension cord plug. If the fuse is burned out, please replace it with spare fuse enclosed.
3. Check wall outlet for power.
4. Check for loose, missing, or broken bulbs.

## **STORAGE:**

Unplug the product from the wall outlet and remove all ornaments and decorations.

(Except for decorations attached at manufacturer.)

Unplug each section of extension cord, keep each stack of lights connected together.

Gently lift off the top and middle sections, and remove the bottom section from the tree stand. Carefully replace the tree in its box and tape it shut.

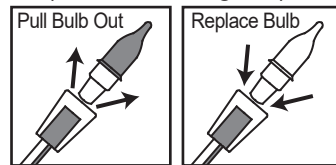
**DO NOT STORE TREE IN A DAMP AREA OR IN AN AREA WHERE THE TEMPERATURE EXCEEDS 100 F.**

## **USER SERVICING INSTRUCTIONS:**

### **BULB REPLACEMENT INSTRUCTIONS:**

1. Make sure the light string is unplugged.
2. To unplug, grasp plug and remove from the receptacle or other outlet device.  
Do not unplug by pulling the cord.
3. Allow bulb to cool. To remove bulb, pull bulb out of socket. (see below diagram)

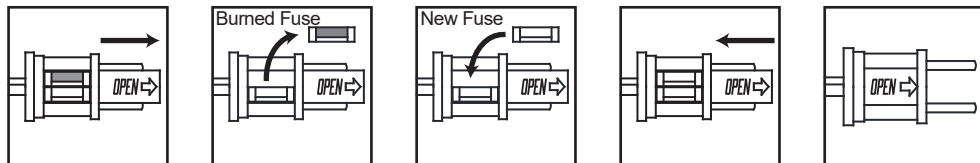
**CAUTION:** To reduce the risk of overheating, replace burned out lamps promptly.  
Use 2.5volt, 0.425watt lamps only.



### **FUSE REPLACEMENT INSTRUCTIONS FOR EACH LIGHT STRING:**

Risk of fire. Do not replace attachment plug. Contains a safety device (fuse) that should not be removed. Discard product if the attachment plug is damaged.

1. Unplug product from the receptacle or other outlet device. Do not unplug by pulling on cord.
2. Open fuse cover. Slide open fuse access cover on top of attachment plug toward blades.
3. Remove fuse carefully.
4. Risk of fire. Replace fuse with 3 Amp, 125 Volt fuse (provided with this product.)
5. Close fuse cover: slide closed the fuse access cover on top of attachment plug.



# ABBLE® 9 ft. Green Lighted Flocked Spruce Artificial Christmas Tree

SKU#300722

- Thank you for purchasing ABBLE® product.
- You are welcomed to visit [www.ablestore.com](http://www.ablestore.com) for more ABBLE® products.
- We are committed to providing customers with quality products and a good purchasing experience.
- Need any help regarding purchase or customer service, please email us by [cs@ableinc.com](mailto:cs@ableinc.com) (will be responded within 24 working hours)



[www.ablestore.com](http://www.ablestore.com)

## **IMPORTANT SAFETY INSTRUCTIONS FOR INDOOR USE ONLY READ AND FOLLOW ALL SAFETY INSTRUCTIONS**

**When using electrical products, basic precautions should always be followed including the following:**

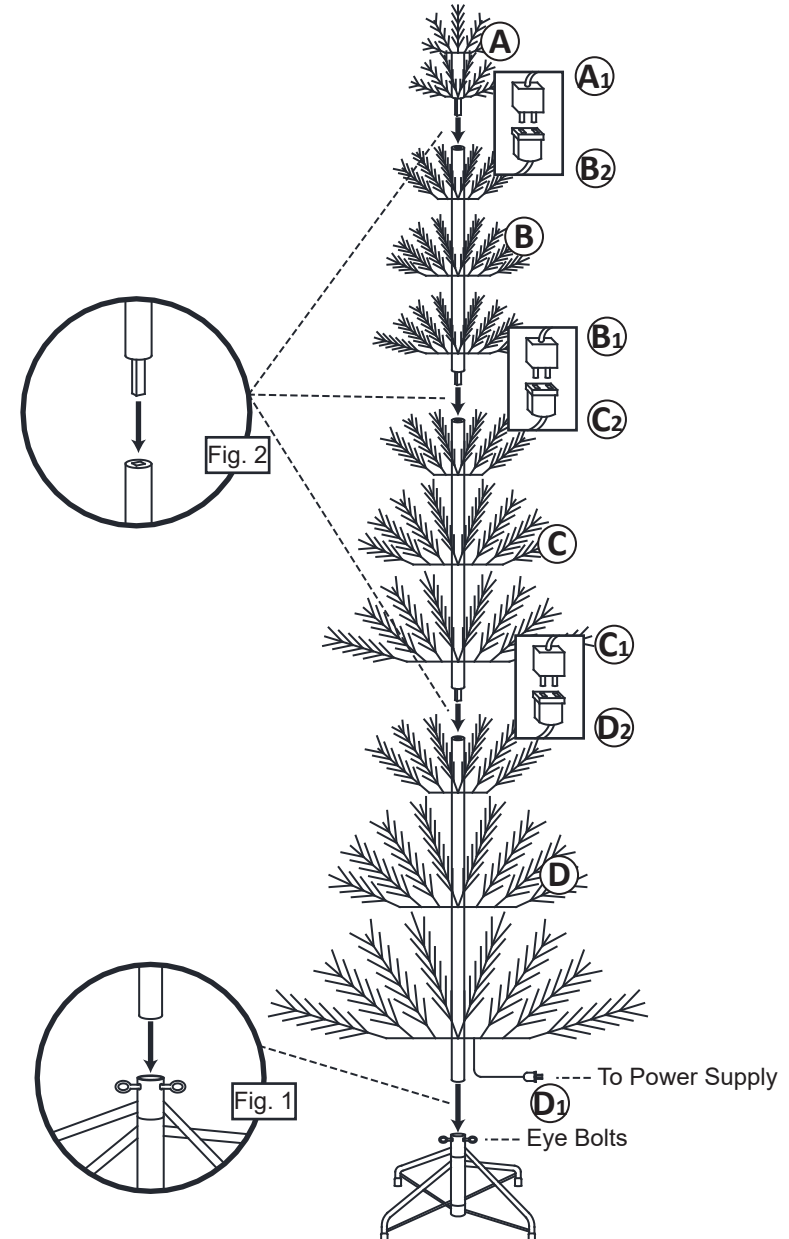
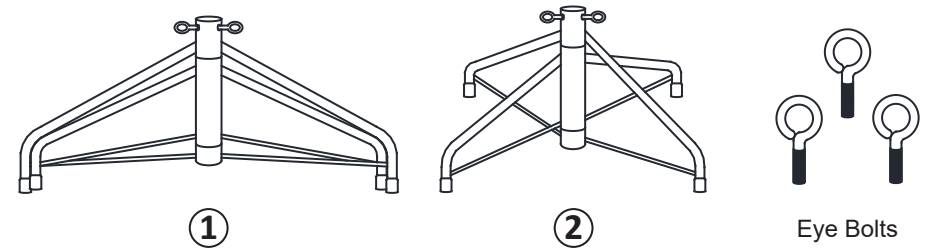
- 1) To reduce the risk of fire, do not deliberately reposition either bulb or lampholder contact.
- 2) To reduce the risk of overheating, replace burned out lamps promptly. This is an electrical product - not a toy! To avoid the risk of fire, burns, personal injury, and electric shock it should not be played with or placed where small children can reach it.
- 3) Do not use seasonal products outdoors unless marked suitable for indoor and outdoor use. When products are used in outdoor applications, connect the product to a Ground Fault Circuit interrupting (GFCI) outlet. If one is not provided, contact a qualified electrician for proper installation.
- 4) This seasonal use product is not intended for permanent installation or use.
- 5) Do not mount or place near gas or electric heaters, fireplaces, candles or other similar sources of heat.
- 6) Do not secure the wiring of the product with staples or nails, or place on sharp hooks or nails.
- 7) Do not let lamps rest on the supply cord or on any wire.
- 8) Unplug the product when leaving the house, when retiring for the night, or if left unattended.
- 9) Do not use this product for other than its intended use.
- 10) Do not hang ornaments or other objects from cord, wire, or light string.
- 11) Do not close doors or windows on the product or extension cord as this may damage the wire insulation.
- 12) Do not cover the product with a cloth, paper or any material not part of the product when in use.
- 13) The product employs overload protection (fuse). A blown fuse indicates an overload or short circuit situation. If the fuse blows, unplug the product from the outlet. Also unplug any additional strings or products that may be attached to the product. Replace the fuse as per the user servicing instructions (follow product marking for proper fuse rating) and check the product. If the replacement fuse blows, a short circuit may be present and the product should be discarded.

Read and follow all instructions that are on the product or provided with the product.

**SAVE THESE INSTRUCTIONS**

## PRE-LIT TREE ASSEMBLY INSTRUCTIONS:

- Follow the stand assembly instructions to set up the tree stand.
  - Pull apart the legs of the stand so that they are X-shaped.
  - Screw the eye bolts through the hole of metal tabs. Turn screws so they touch tree trunk. Stand tree up and straighten by adjusting screws in or out then tighten screws.
- Set section D to stand. Take all the hinged branches to unfold into place. (See Fig. 1)
- Shape the branches on the bottom section of your tree. Note that some tree models have "side branches" attached to the main branch stem that require additional shaping.
- Set the third section C of tree into bottom section. (See Fig. 2) Take all the branches to unfold into place. Shape the tree to a full look. Connect plug C1 to end plug D2.
- Set the second section B of tree into section C. (See Fig. 2) Take all the branches to unfold into place. Shape the tree to a full look. Connect plug B1 to end plug C2.
- Insert tree top A into the hole (pole cap) on the top of the trunk of section B. (See Fig.2) Take all the branches to be shaped. Connect the plug (A1) on the light set on the tree top section into the end-plug (B2) of the strings of the section B. Shape the branches on the tree top section.
- After shaping the whole tree following the previous steps, step back and take an overall look at the tree. Shift branches as necessary to fill any gaps.
- Now you can plug the D1 to a standard power outlet to perform the tree for decoration.



## USE AND CARE INSTRUCTIONS:

Before using or reusing, inspect product carefully. Discard any products that have cut, damaged, or frayed wire insulation or cords, cracks in the lampholders, loose connections, or exposed copper wire.

Before storing the product, carefully remove the product from wherever it is placed to avoid any undue strain or stress on the product conductors, connections, and wires.

When not in use, store neatly in a cool, dry location protected from sunlight.