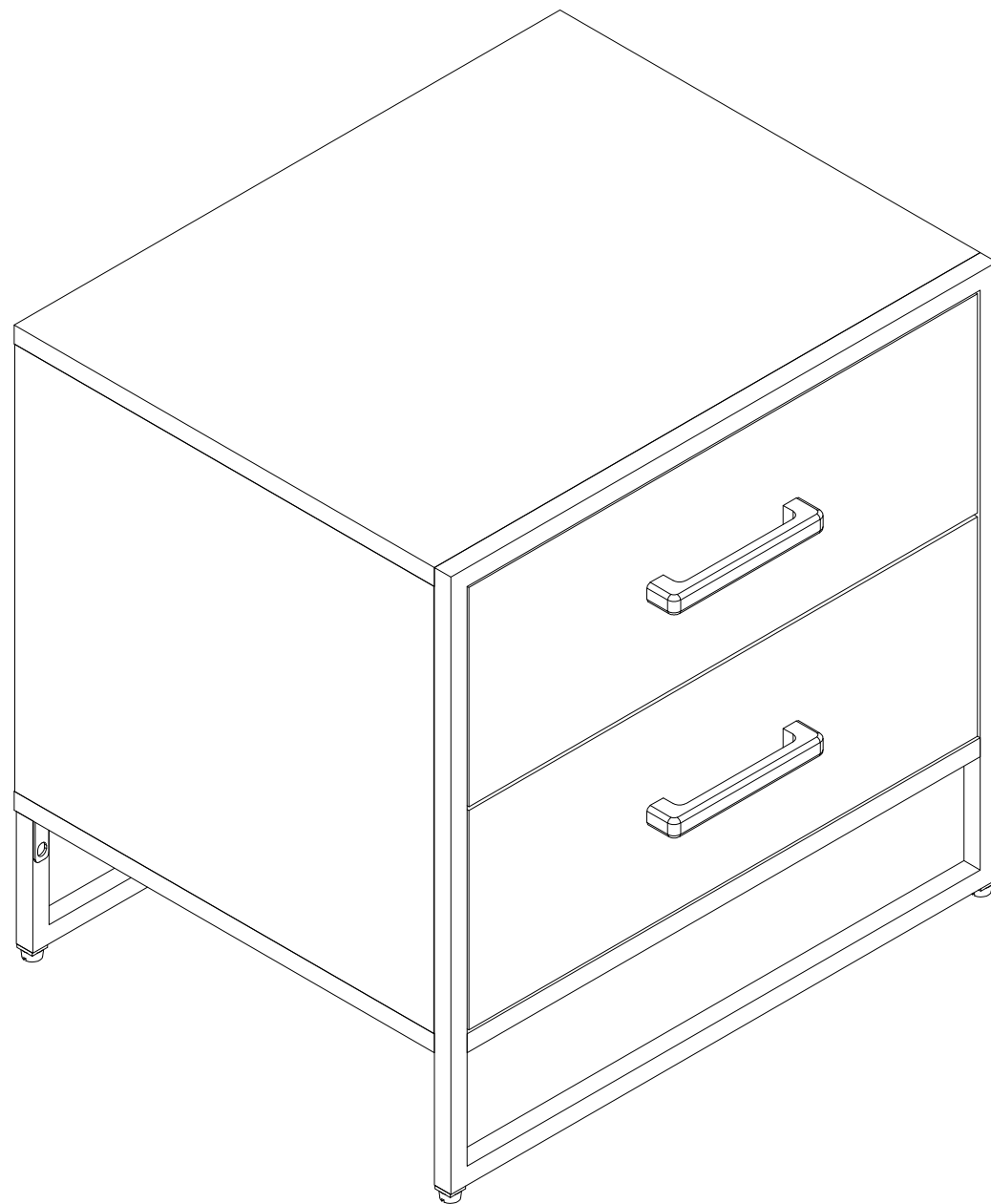


# ASSEMBLY INSTRUCTIONS

---

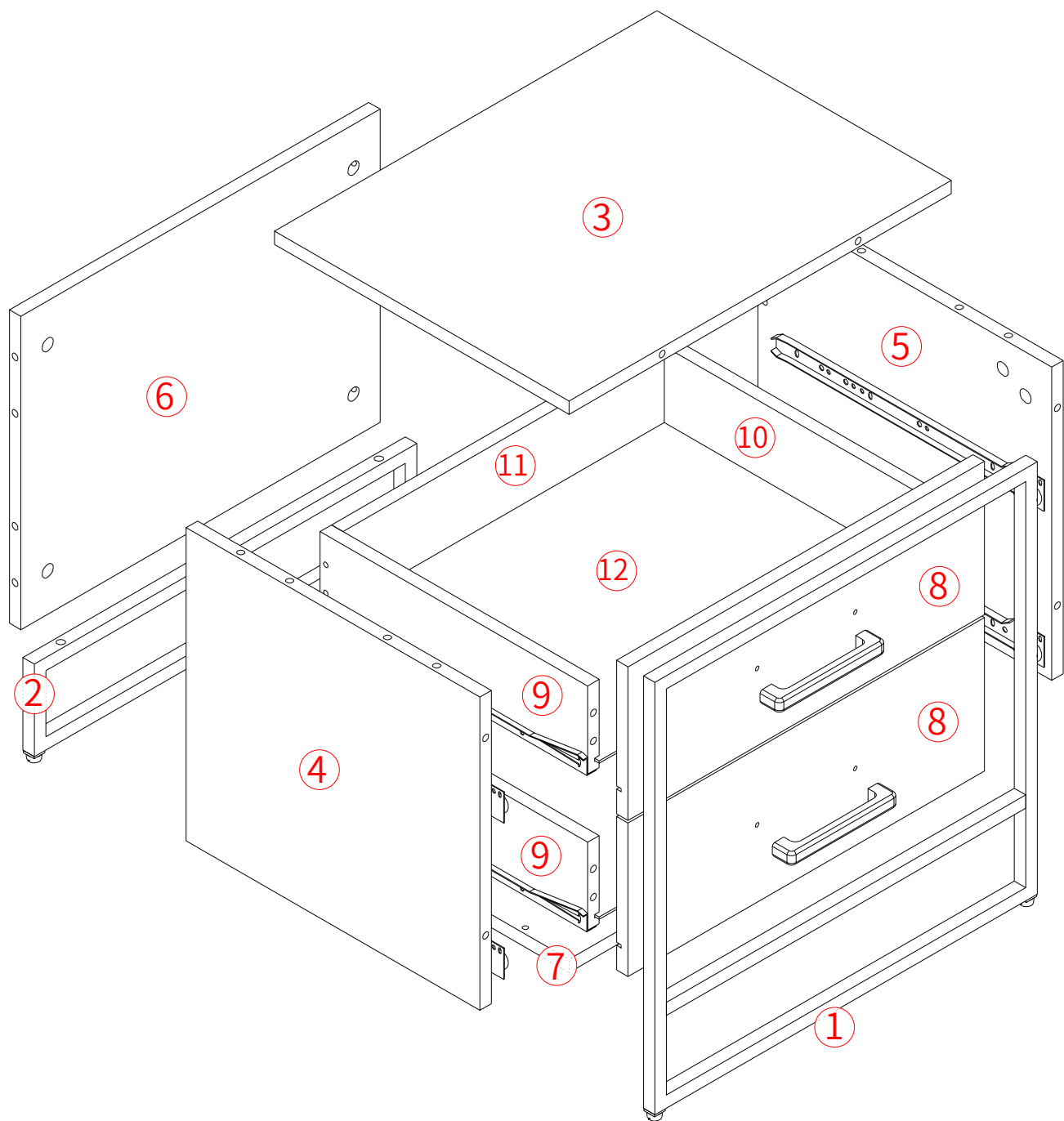
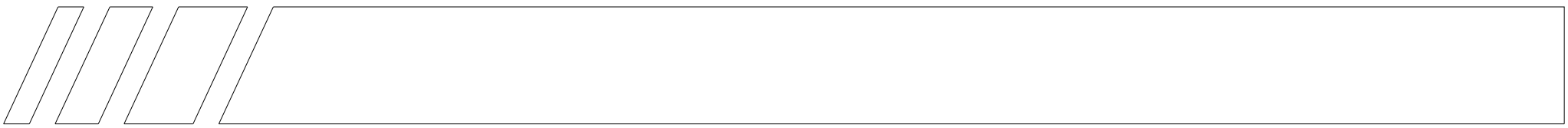


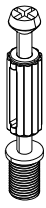
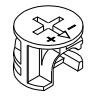
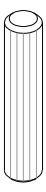

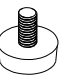
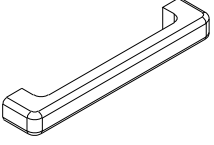
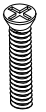

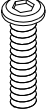

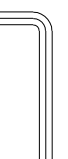
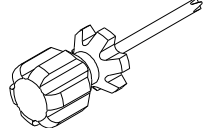
## Notice:

1. Follow the installation instructions. Please confirm all accessories are preset before installation.
2. Do not fully tighten the screws during initial assembly, Fully tighten screws only once all pieces which are correctly assembled.
3. If you encounter any problems during installation, please contact our customer service



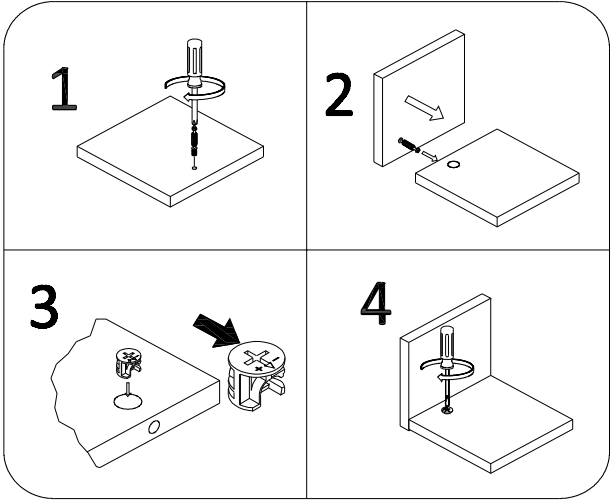
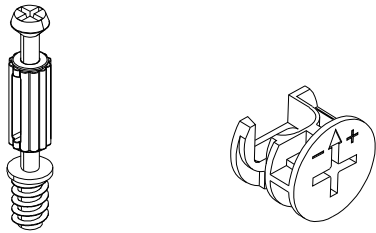
<div>①</div> <div></div>	<div>②</div> <div></div>	<div>③</div> <div></div>
<div>④</div> <div></div>	<div>⑤</div> <div></div>	<div>⑥</div> <div></div>
<div>⑦</div> <div></div>	<div>⑧</div> <div></div> <div>x 2</div>	<div>⑨</div> <div></div> <div>x 2</div>
<div>⑩</div> <div></div> <div>x 2</div>	<div>⑪</div> <div></div> <div>x 2</div>	<div>⑫</div> <div></div> <div>x 2</div>
<div>⑬</div> <div></div> <div>CL</div> <div>CR</div> <div>DL</div> <div>DR</div> <div>14"</div> <div>x 2</div>	<div>⑭</div> <div></div> <div>x 2</div>	

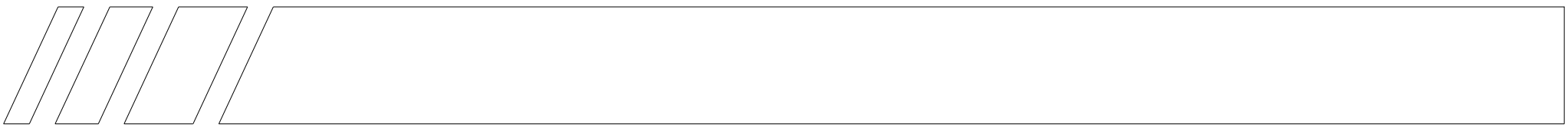


<b>A</b> M6x42  24 PCS	<b>B</b> Ø15x12  24 PCS	<b>C</b> Ø8x40  8 PCS	<b>D</b> M5x40  12 PCS	<b>E</b> M6xH10  4 PCS	<b>F</b> 8347-128  2 PCS
<b>G</b> M4x18  4 PCS	<b>H</b> M3.5x14  16 PCS	<b>I</b> M6x25  3 PCS	<b>J</b> M6x12  4 PCS	4#  1 PCS	 1 PCS

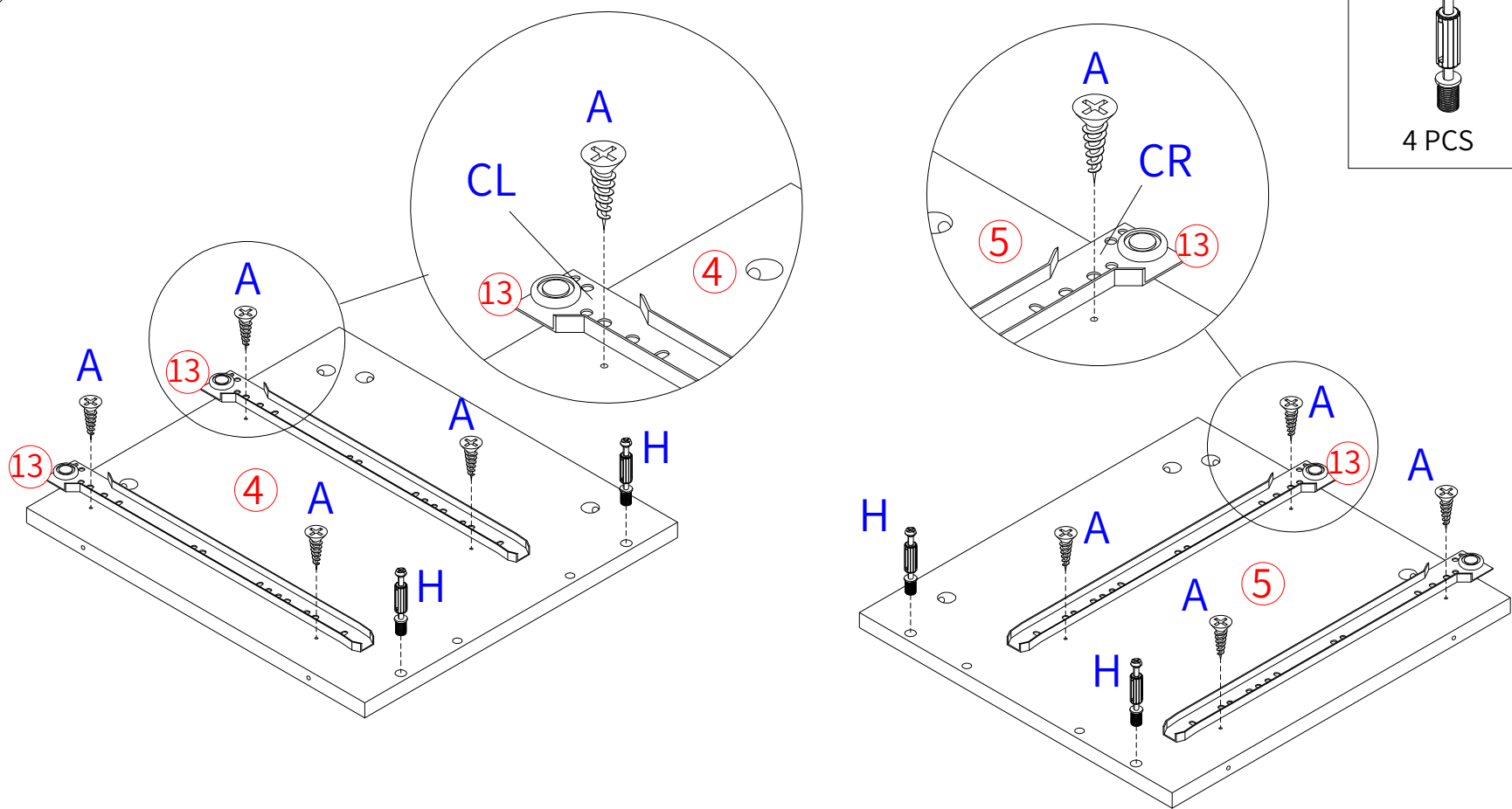
**Cam Lock Fastening System**

**This Cam Lock Fastening System will be used throughout the assembly process**



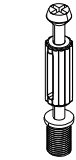


1



A M6x42

H M3.5x14

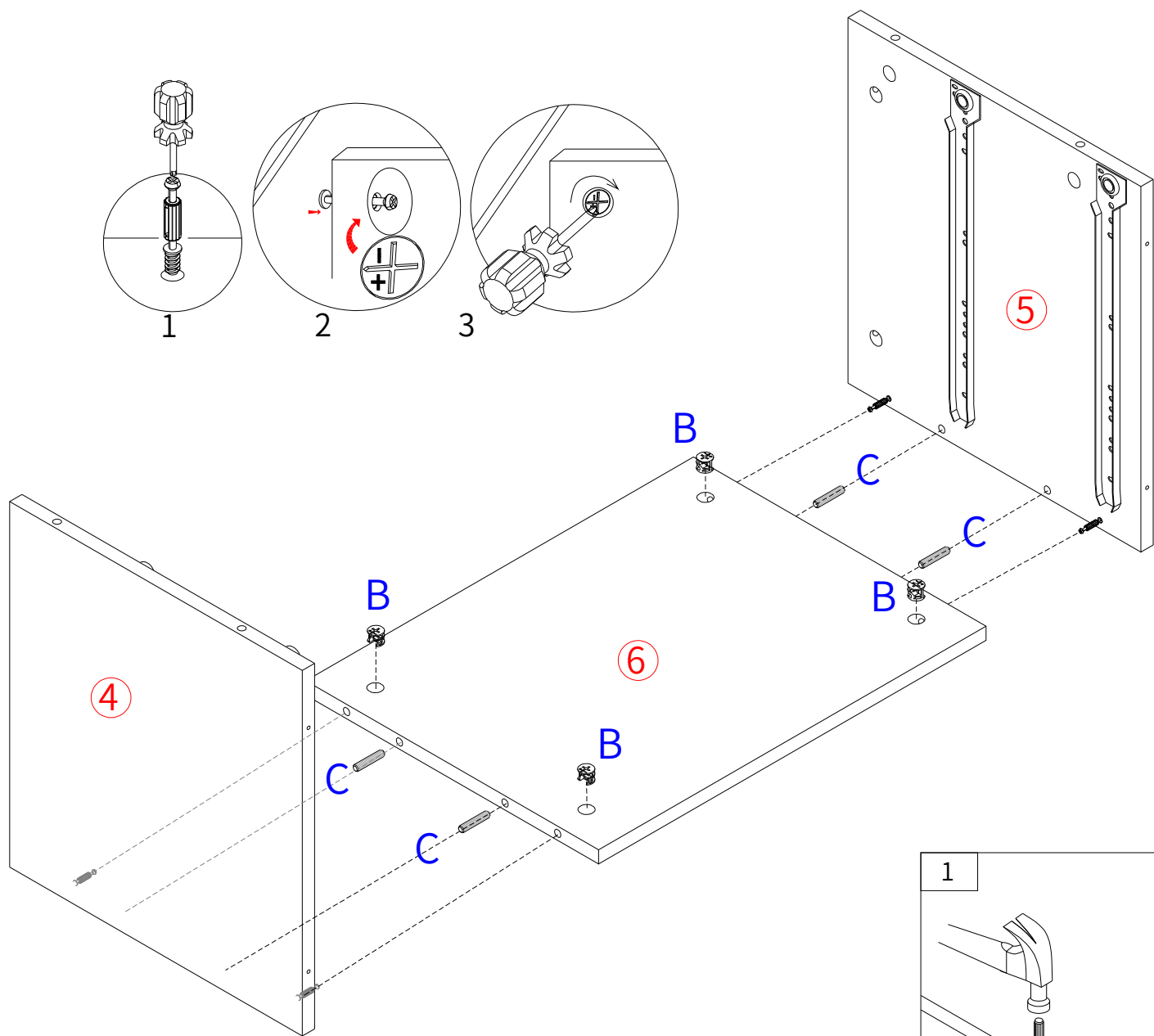


4 PCS



8 PCS

2

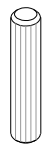


B Ø15x12

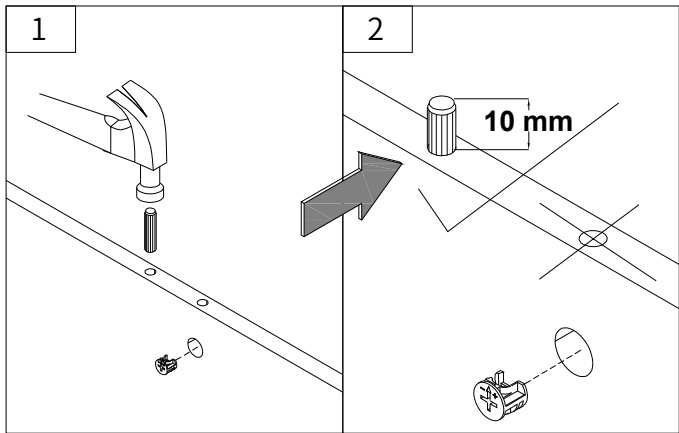


4 PCS

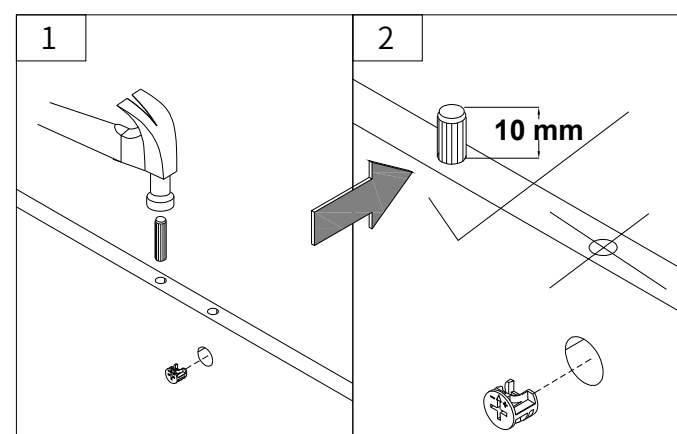
C Ø8x40

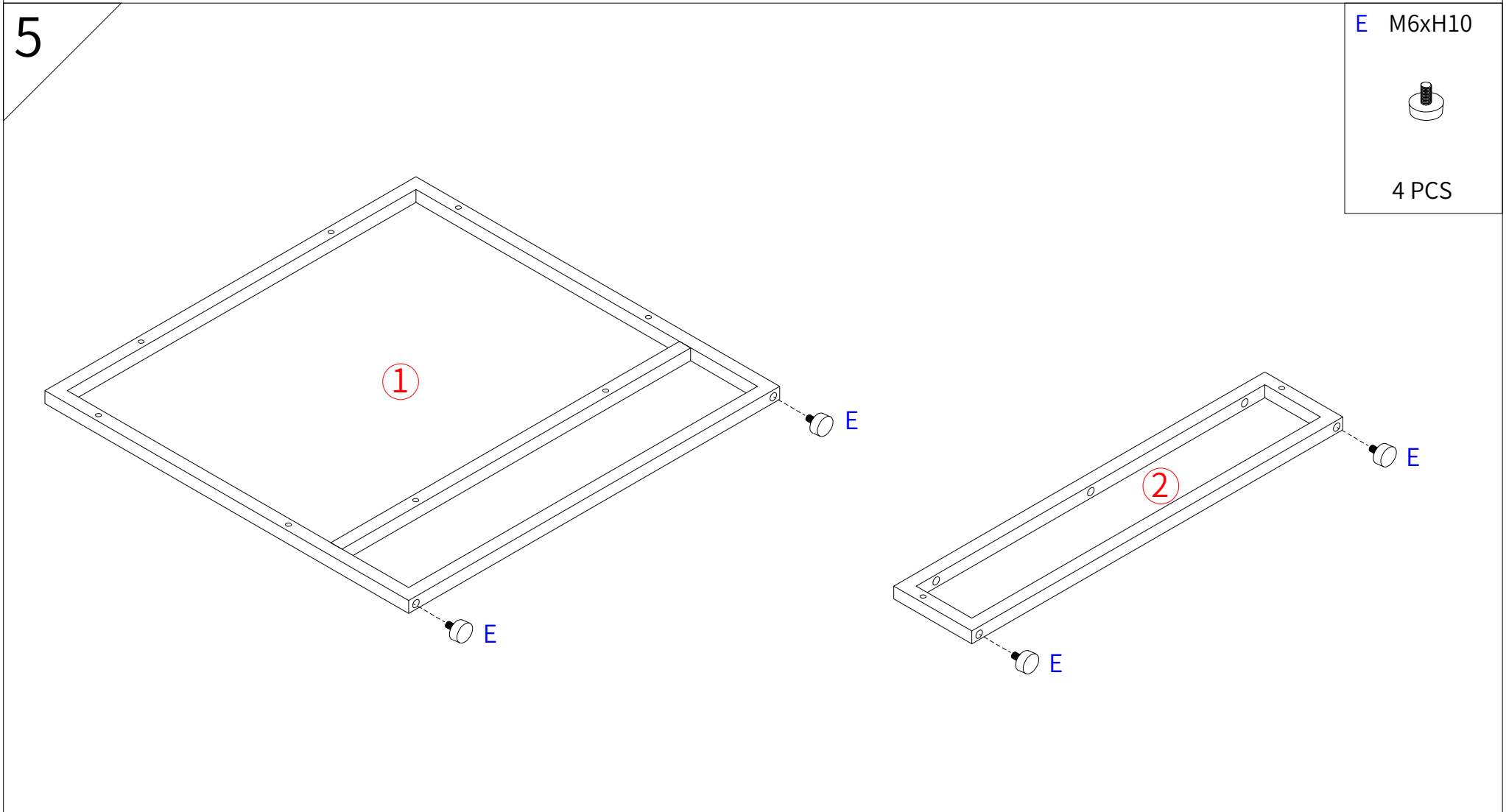
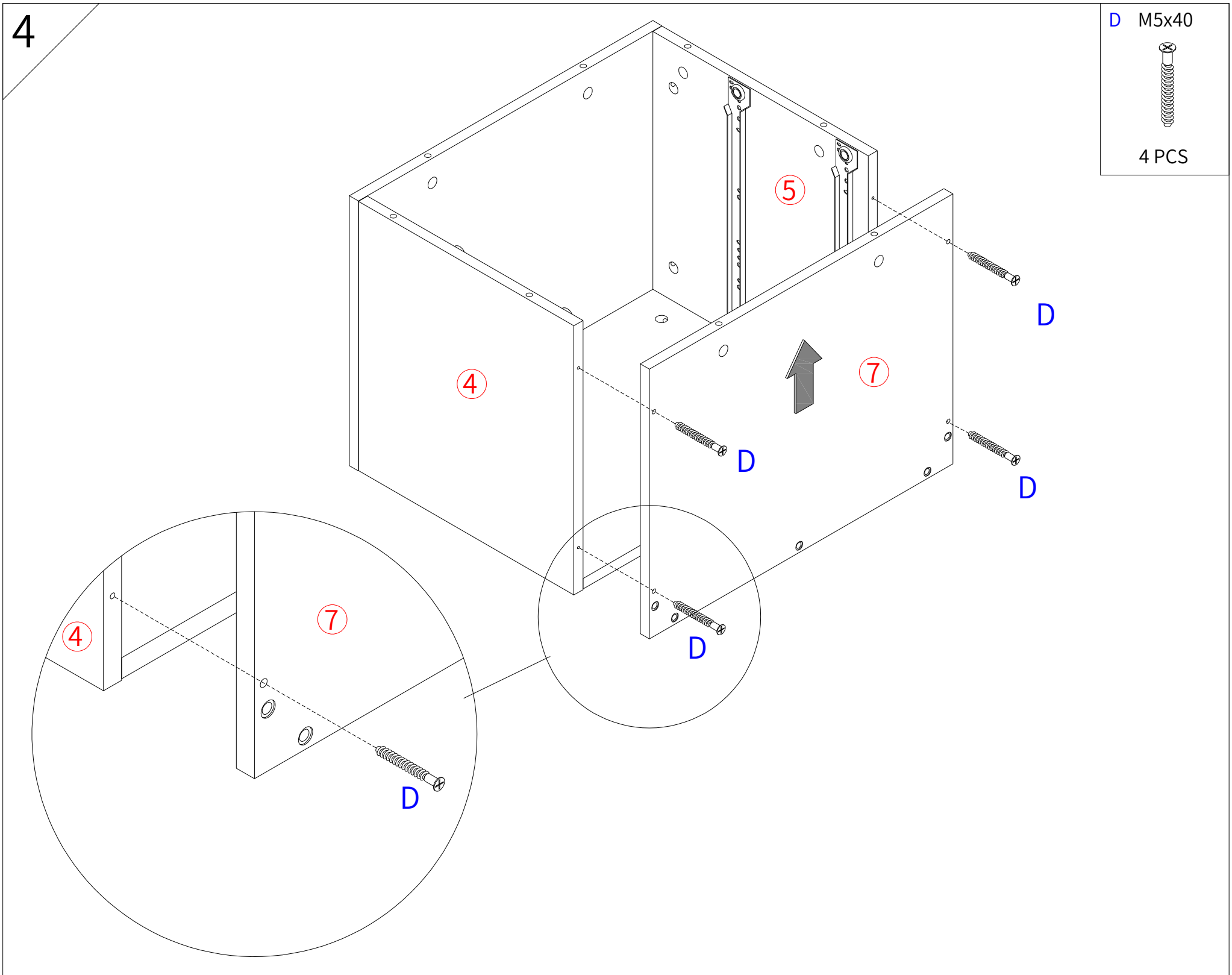
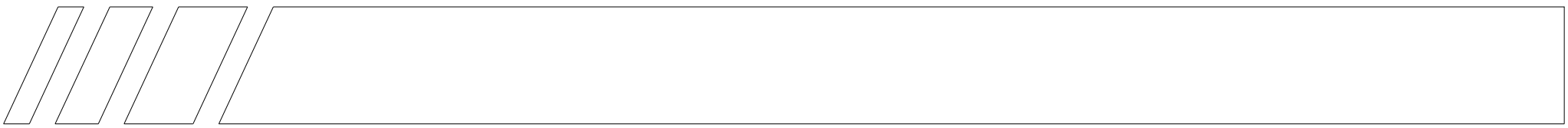


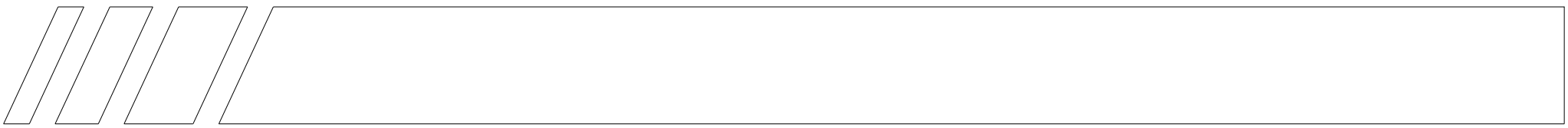
4 PCS



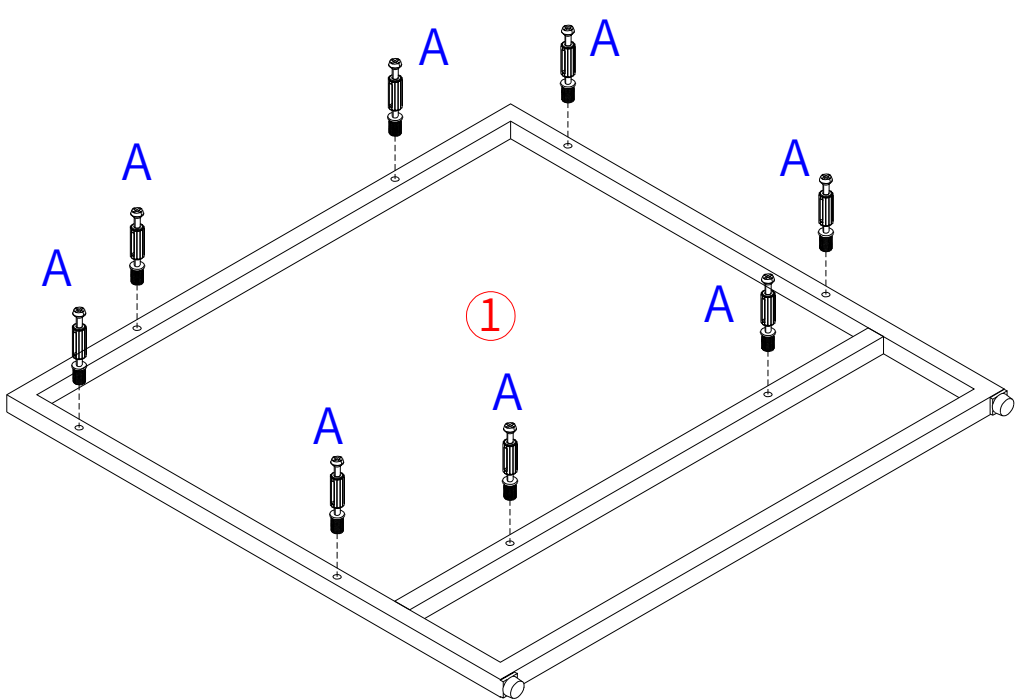
4 PCS







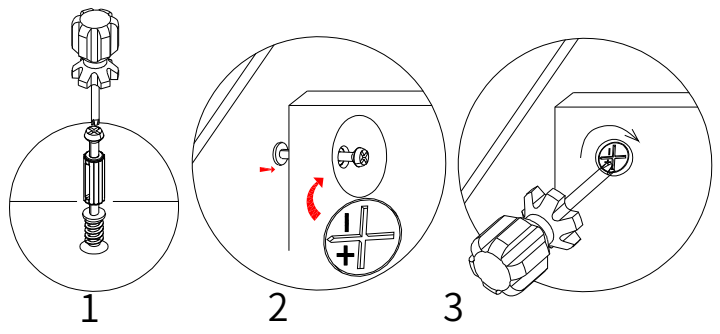
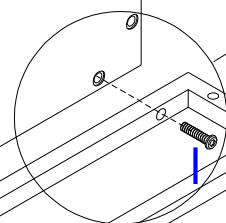
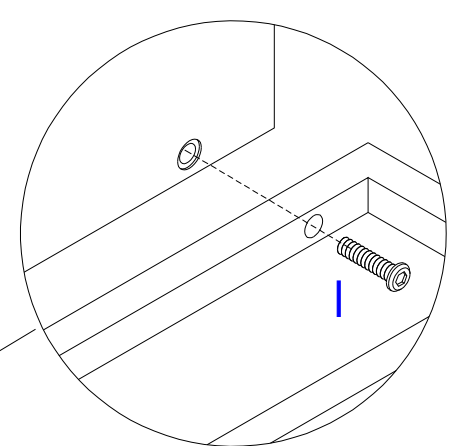
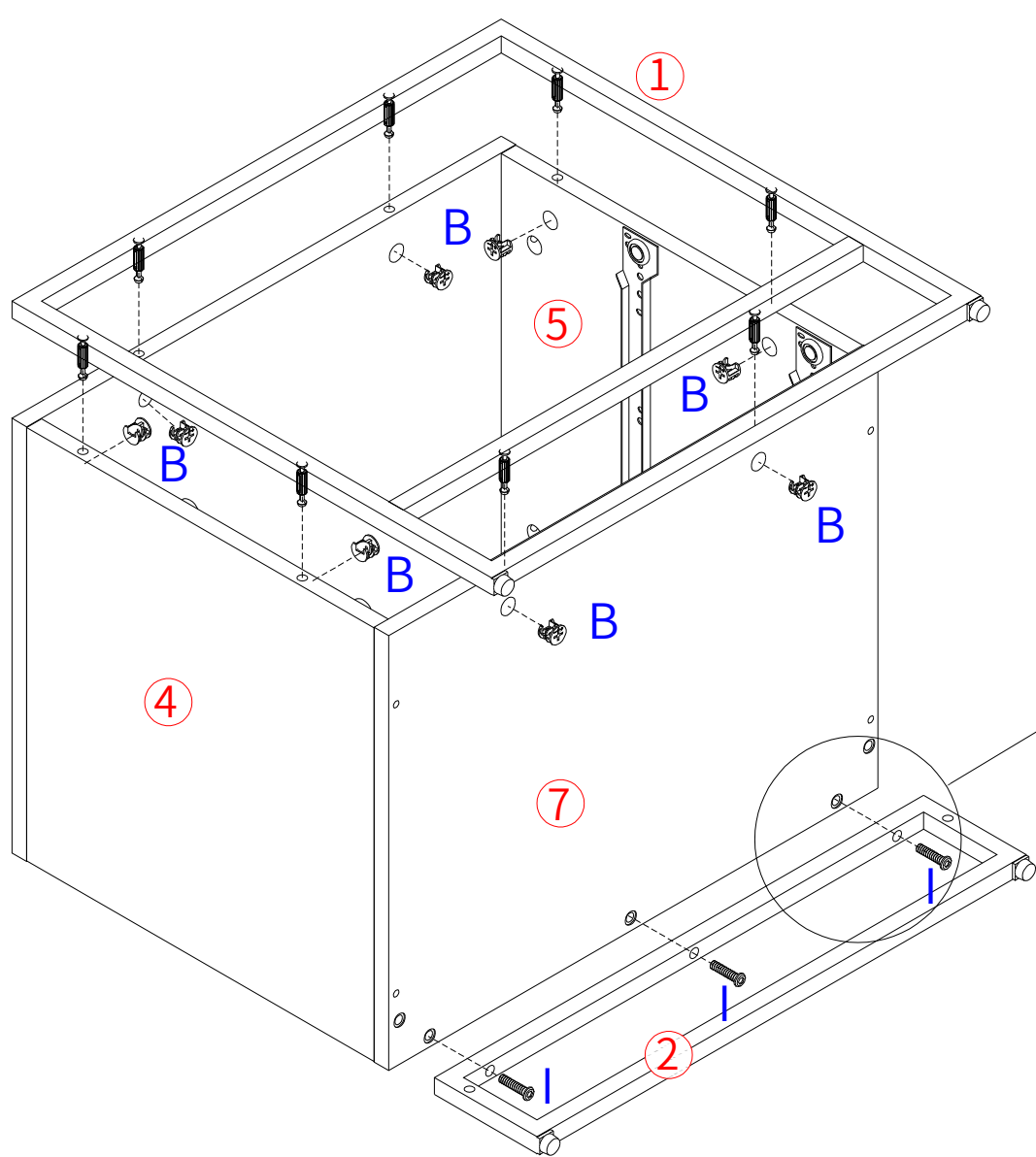
6

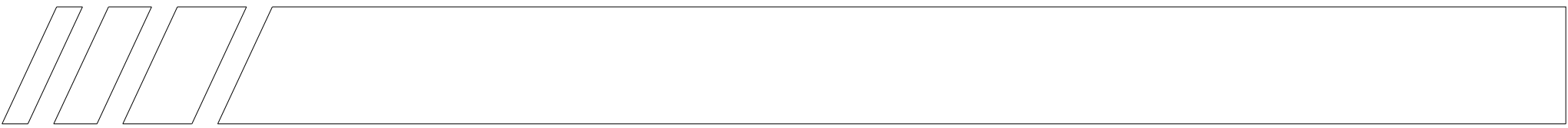


A M6x42  
8 PCS

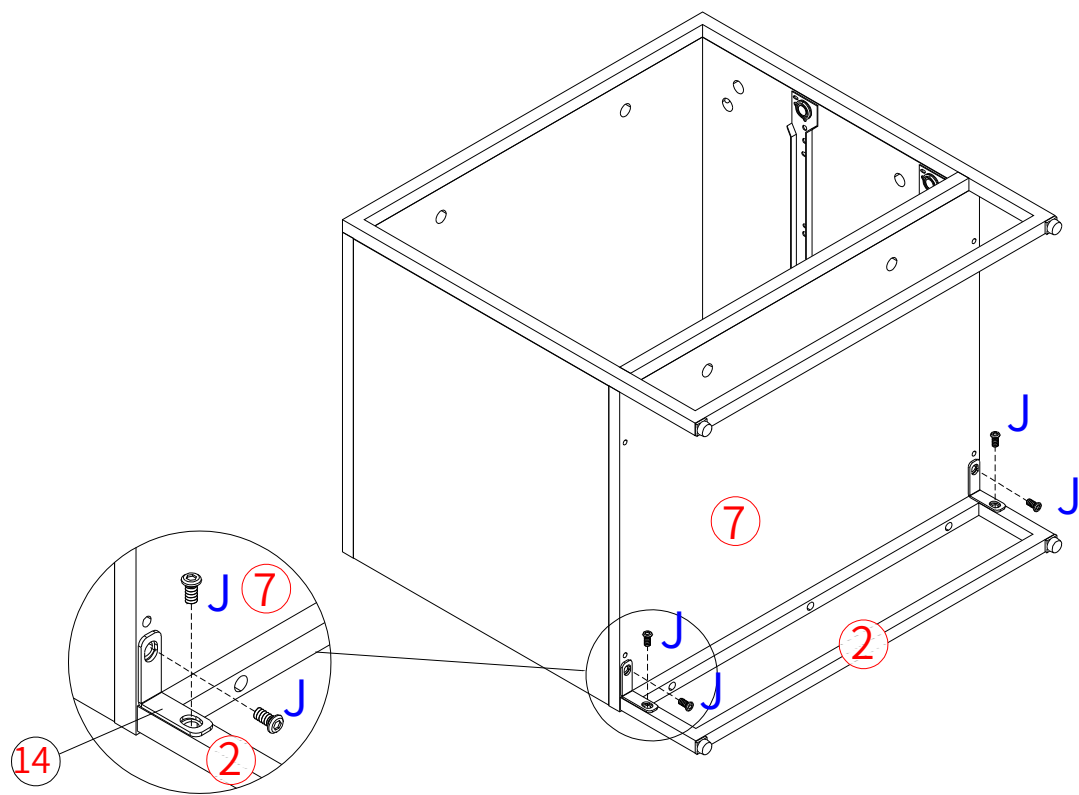
B Ø15x12  
8 PCS

I M6x25  
3 PCS






7

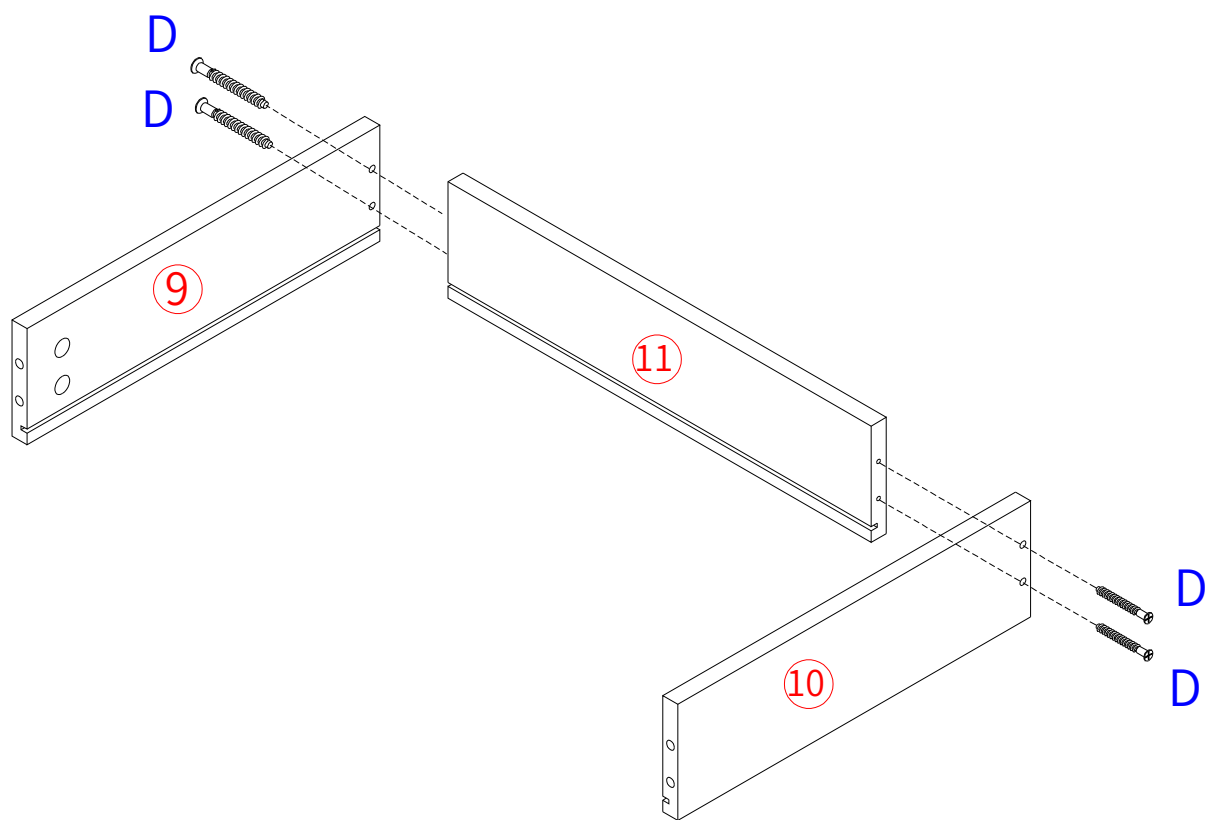


J M6x12

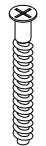


4 PCS

8



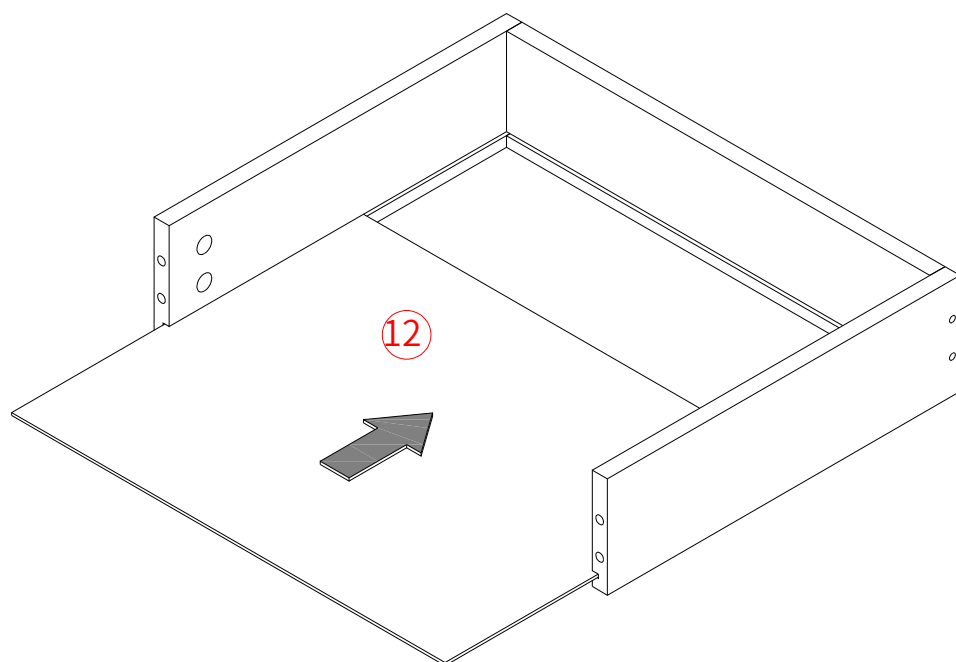
D M5x40



8 PCS

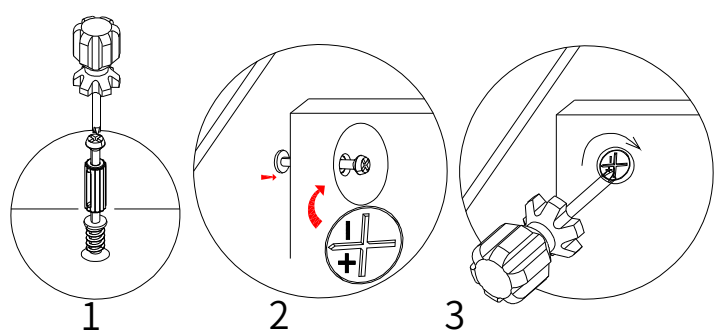
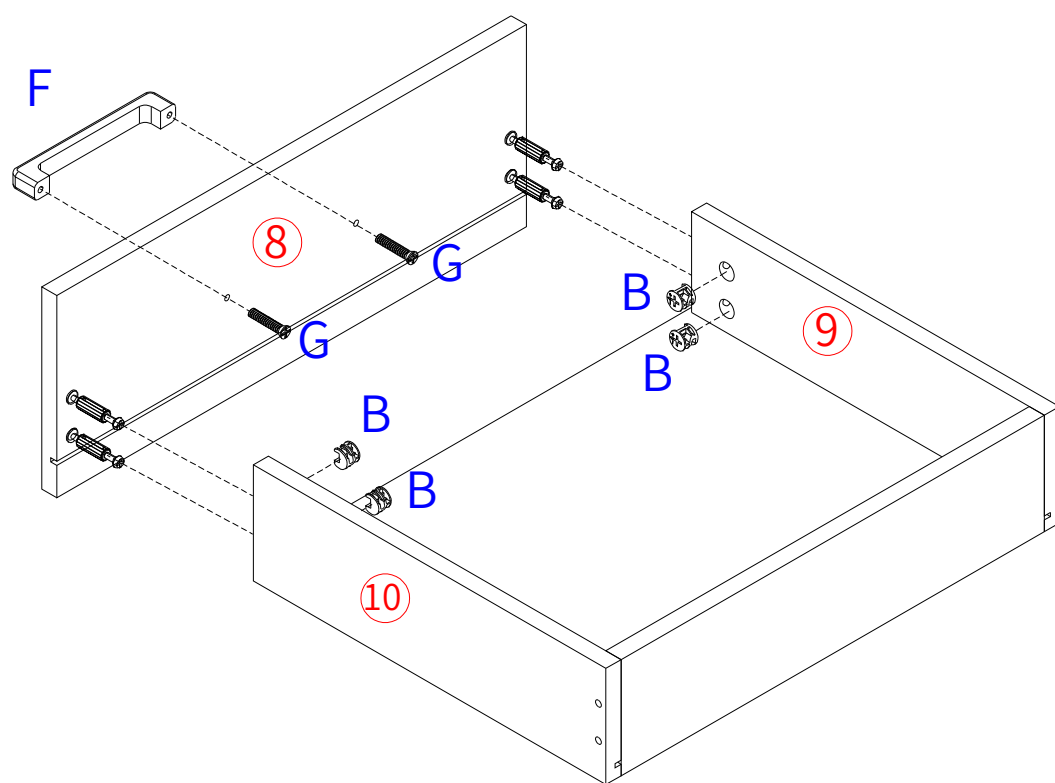
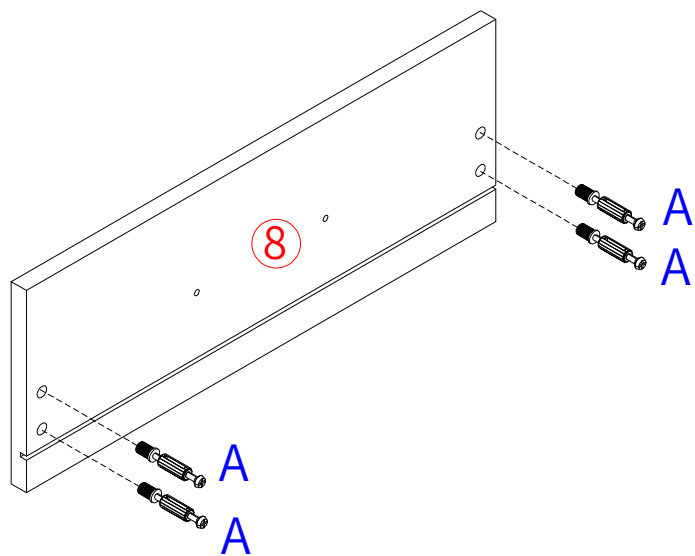

x 2

9

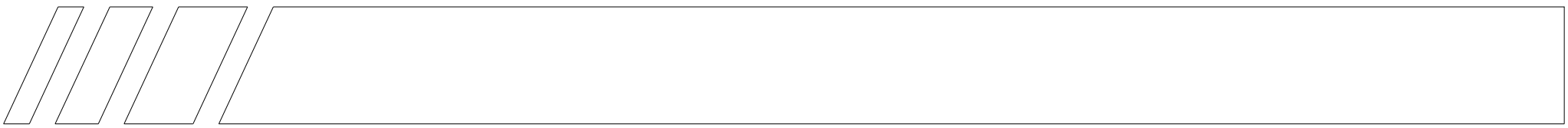


x 2






x 2

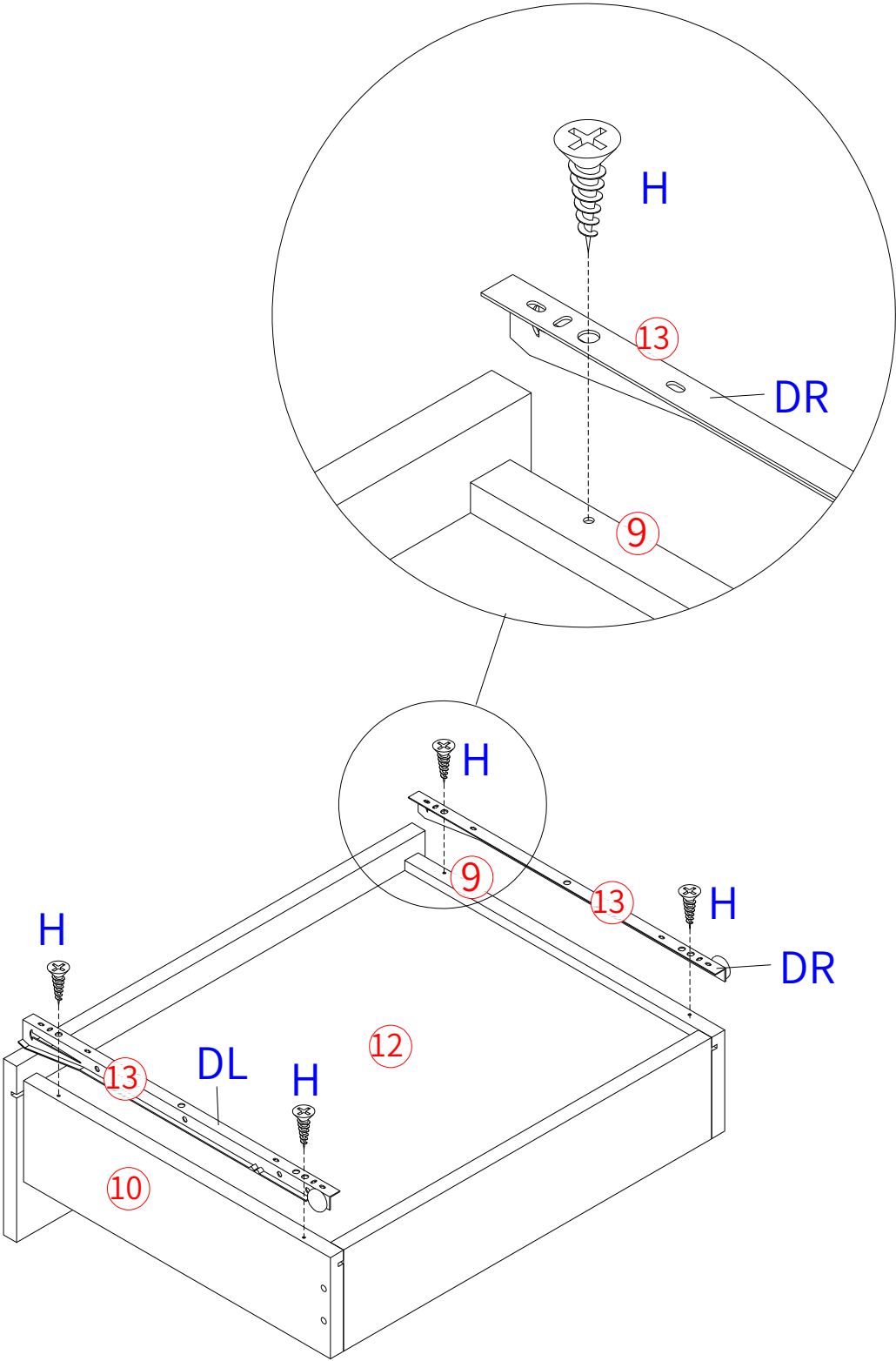


11

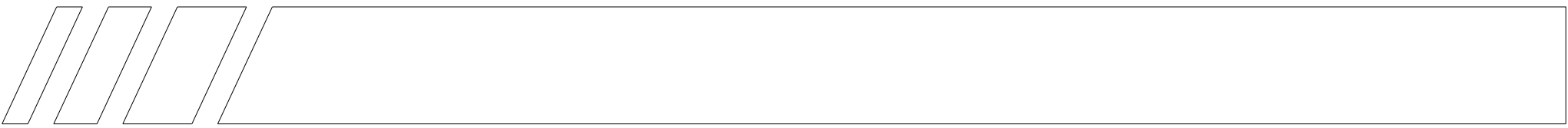
H M3.5x14



8 PCS



x 2



12

