

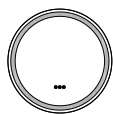
PACKING LIST



Hanging Bracket



Anchor & Screws



Led Lighted Mirror



Instruction Manua

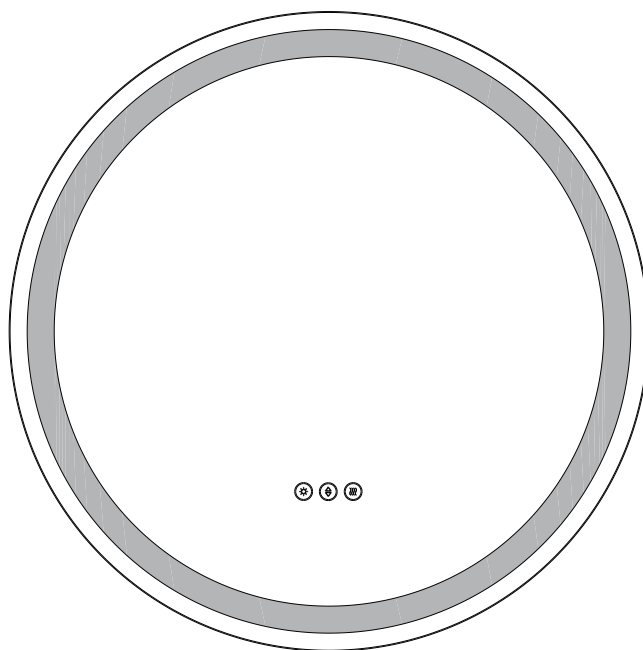


SAFETY INSTRUCTIONS

- ① Please read the instructions carefully before using.
- ① Do not disassemble or refit the products.
- ① Press touch sensor button properly.
- ① Handle with care during installation or moving.
- ① Keep the mirror dry moisture reduces the sensitivity of the product.
- ① Turn off the power before cleaning. The surface of the mirror should be cleaned with glass cleaner , please make sure the mirror is completely dry before using.
- ① Turn off the power and avoid direct sunlight if not used or stored for a long time , keep it away from children.
- ① Do not approach or put the product into the fire in case of fire or explosion.
- ① Stop using it immediately if abnormal condition occurs.

MADE IN CHINA

WALL-MOUNTED LED BATHROOM MIRROR OPERATIONS AMUAL



4MODERN HOME

ASSEMBLY & INSTALLATION INSTRUCTIONS

Dear Customer:

Thank you for your business!

If you have any question or problem, please send us an email to support @4modemhome.com or call us at 469-312-6428.

We will do everything possible to make you completely satisfied with your purchase. Product reviews help future customers to make their purchase decision.You are encouraged to share your experience by leaving a short product review on the platform where you bought this product.

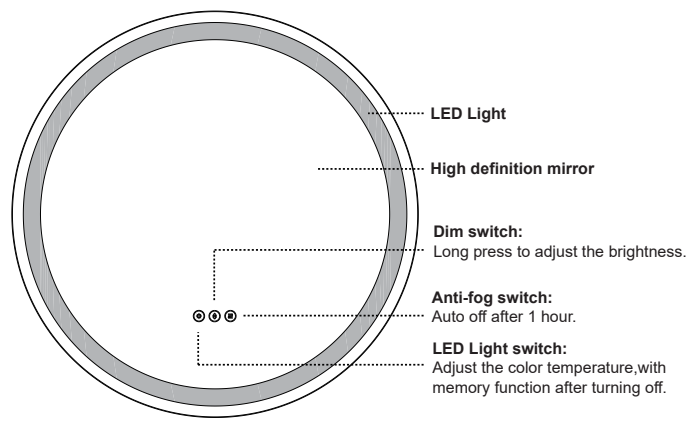
Thank you!

4ModemHome

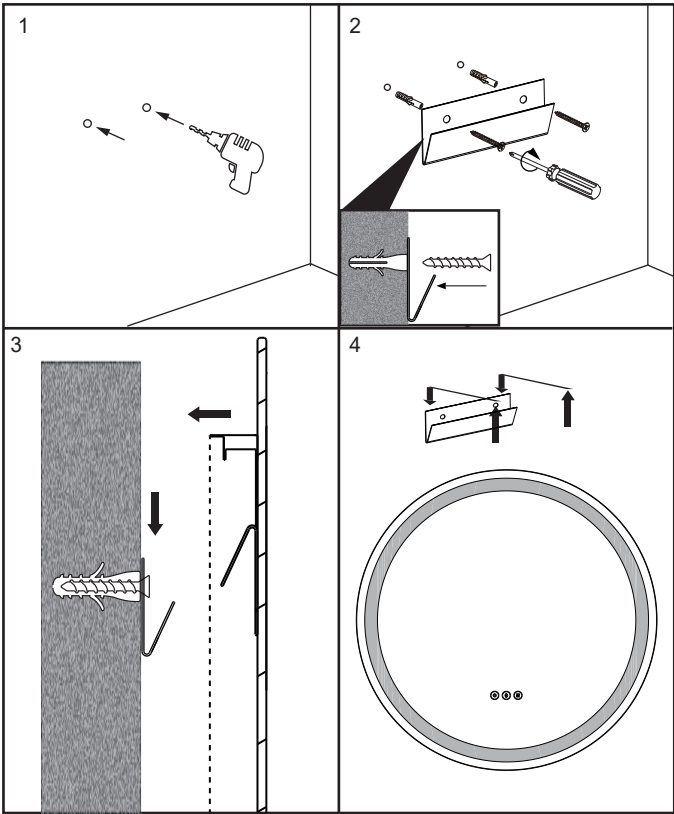
Warning: If any special control devices are used with this fixture , follow the instructions carefully to assure full compliance with N.E.C.requirements.If there are any questions , contact a qualified electrical contractor.

Caution: It is highly recommended to get an electrician to install this light.Please make sure to turn the electricity off at the main circuit breaker before beginning installation. All glass is fragile. Use care when handling glass component (s) and/or lamp(s).

ILLUSTRATION



INSTALLATION METHOD



- ① Measure the distance of the aluminum strip behind the mirror with a tape measure.
- ② Mark at the determined installation positions and draw an auxiliary line with a pencil.
- ③ Drill holes at installation positions with an electric drill.
- ④ Hammer the expanded plastic material into the holes.
- ⑤ Take out the metal hanging piece and use a screwdriver to fix the hanging pieces on the wall with screws.
- ⑥ Point the aluminum strip at the metal pieces and hang the mirror on the wall.

OPERATING INSTRUCTIONS

- Please use standard plug to connect the power directly.
- Touch once to turn on the lighting and touch three times to turn it off. Touch to cycle through the light comperatures: Cold White, Natural White, Warm Yellow
- Long Hold to dim or brighten the light. (Factory setting: the brightness has been adjusted to 100%; if you think it is too dazzling, you can long press it again to reduce the brightness to your prefece)
- Press switch to turn on/off the anti-fog. The button lights white when the demister is on.
- Unplug when it is no used.

SPECIFICATIONS

[Product Name] LED bathroom mirror

[Material] Aluminum frame +Glass

[LED Color Temperature] 3000-4200-6500K

[Power Supply] Powered driver AC,120V

Dimension	Output Around	LM	Defog Size (mm)	No. of Hanging Bracket	No. of Anchor+ Screws Set
Φ24"	25W	1850	120*300	1	2
Φ28"	25W	2100	200*350	1	2
Φ32"	36W	2400	300*400	1	2
Φ36"	36W	2800	350*500	1	2
Φ40"	36W	2900	350*500	1	3

SPECIAL FEATURE

- 3/16 inch Thickness high definition eco-friendly glass mirror
- With switching and free to switch between warm , natural and cool light
- With dimming function
- With anti-fog function
- Built-in power plug