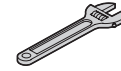


Logmey

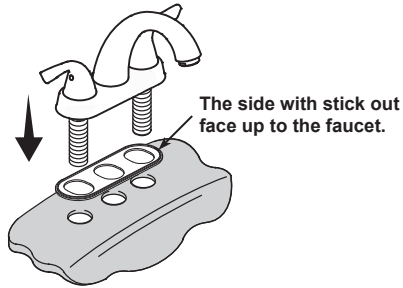
Installation Guide

Please contact
logmey168@yahoo.com first,
if you have any questions or need help.

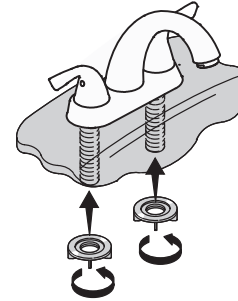
Package Includes
Bathroom Sink Faucet x 1
Pop-up Drain Assembly x 1
Hot & Cold Water Supply Hoses



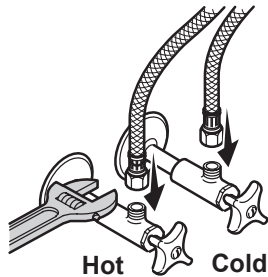
1 Insert the faucet.



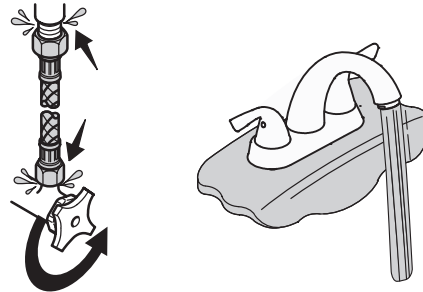
2 Tighten the mounting nuts.

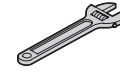


3 Connect and tighten the supply hoses.



4 Turn on the water supplies. Check all connections for leaks.





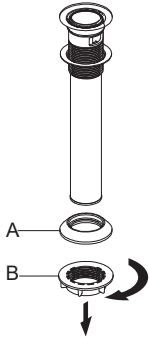
1/2" FIP Hose



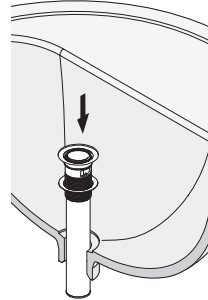
Rags

Installation Guide

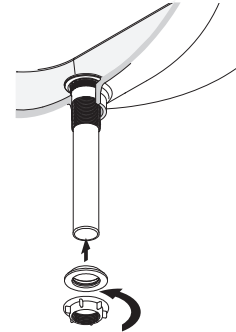
1 Unscrew components A & B. to the seal.



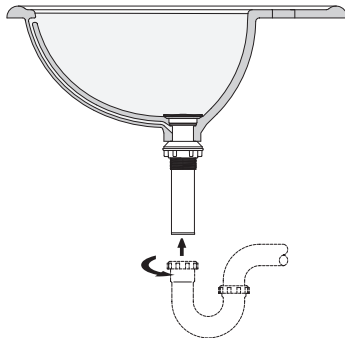
2 Slide the drain body (C) through the hole in the sink.



3 Screw components A & B back on as shown.



4 Connect the rear end of the drain to the Drain Pipe.



5 Push to activate.

