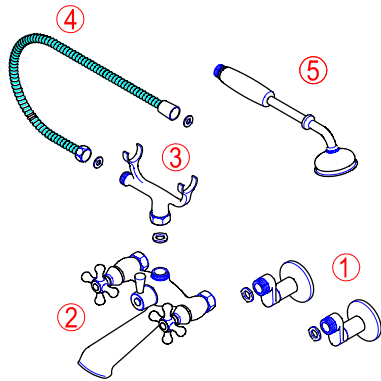


## 3"-9" wall mount tub/shower



### PART LIST

1. Elbow
2. Faucet body
3. Shower cradle
4. Hose
5. Hand shower

### Installation instructions

**WARNING:** Always turn off hot and cold water before starting.

Use Teflon or pipe compound on all water connections.

A. Place mounting legs on the tub, then tighten the lock nuts from underneath and connect the water supply lines. Place washers and then tighten the coupling nuts on to the mounting legs.

B. Use Teflon tapes on the threads of the mounting legs. Install the faucet body by connecting the end nuts of the water lines on the body to the mounting legs, Tighten the nuts.

C. Install the riser (holder) on to the top connector hole of the faucet body. Tighten the end of the riser.

D. Place a washer between the side hole of the riser and the cone nut of the shower hose and tighten the cone nut.

E. Place a washer between the handheld shower unit and the other end of the shower hose and then tighten the cone nut of the shower hose.

