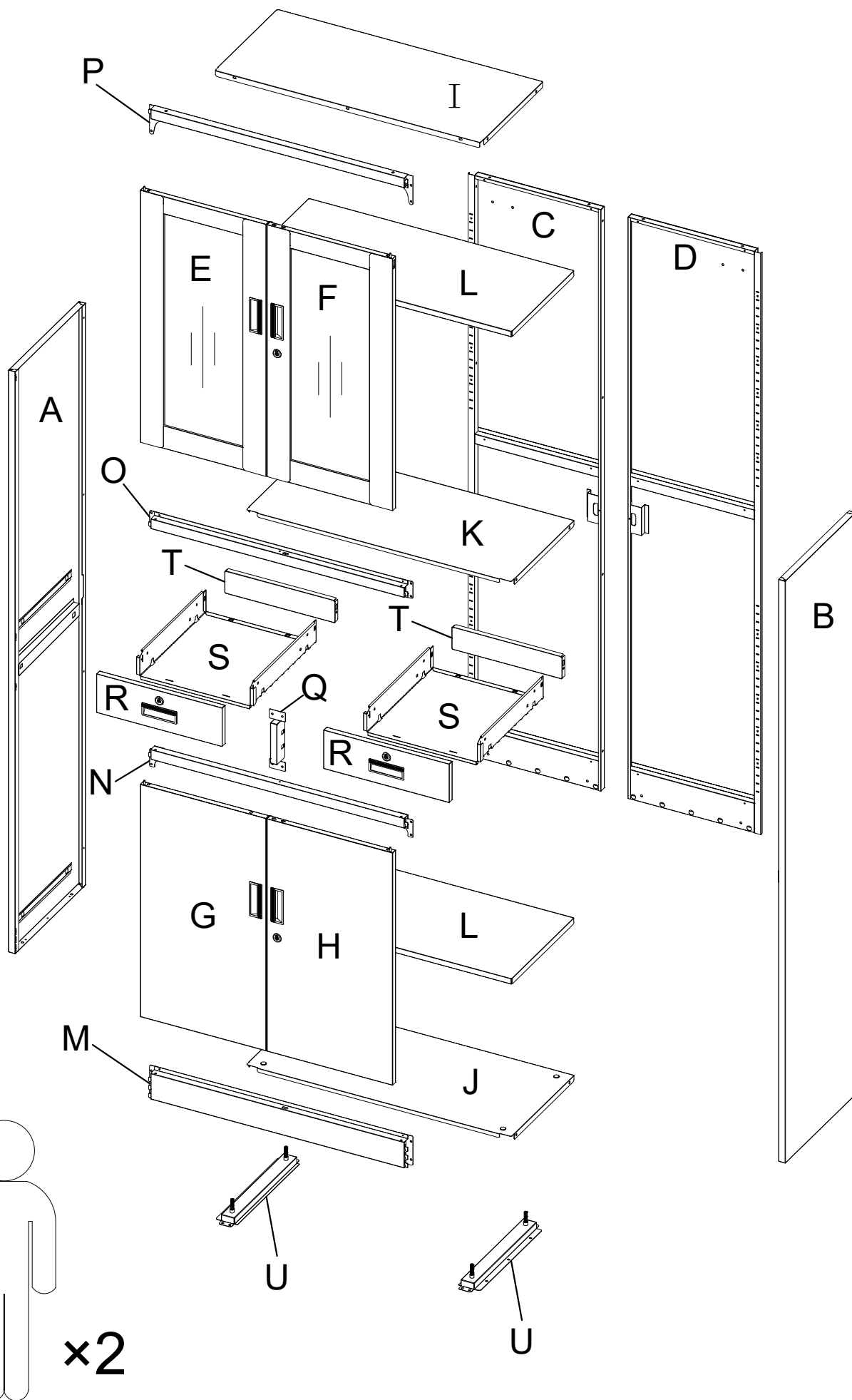
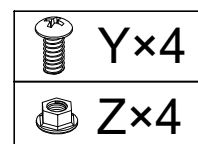
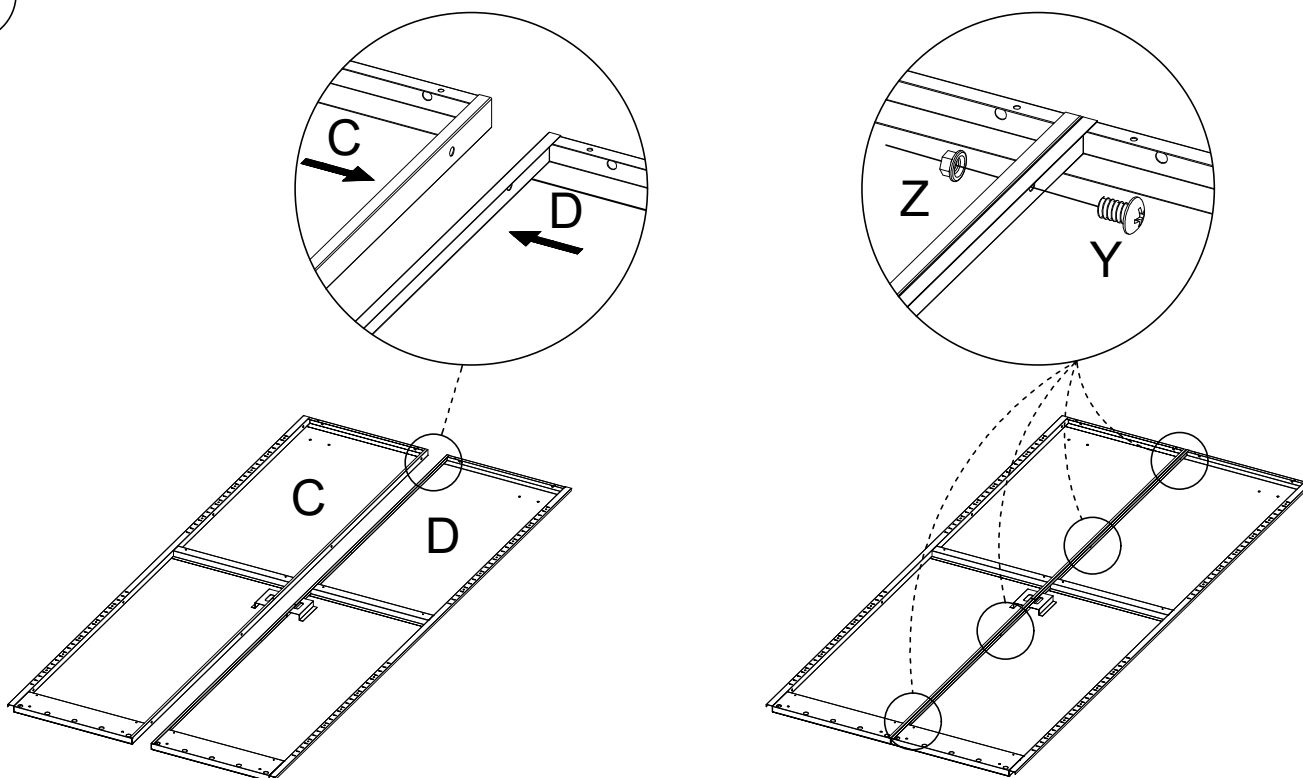


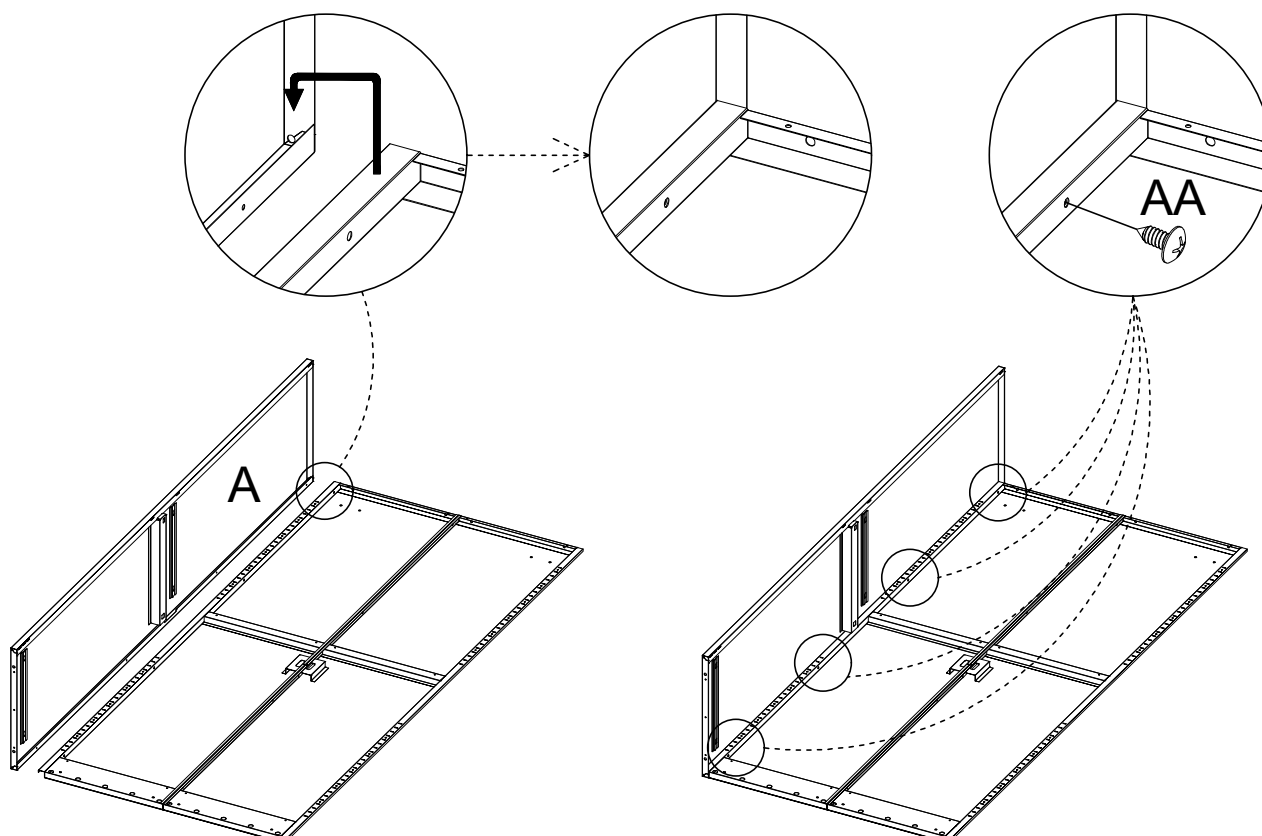
A×1		B×1		C×1		D×1			
E×1		F×1		G×1		H×1			
I×1		J×1		K×1		L×2			
M×1		N×1		O×1		P×1			
Q×1		R×2		S×2		T×2			
U×2		V×2		W×2		X×4			
Y×4	Z×4	AA×61	AB×8	AC×4	AD×8	AE×2	AF×2	AG×4	
									Standby Application



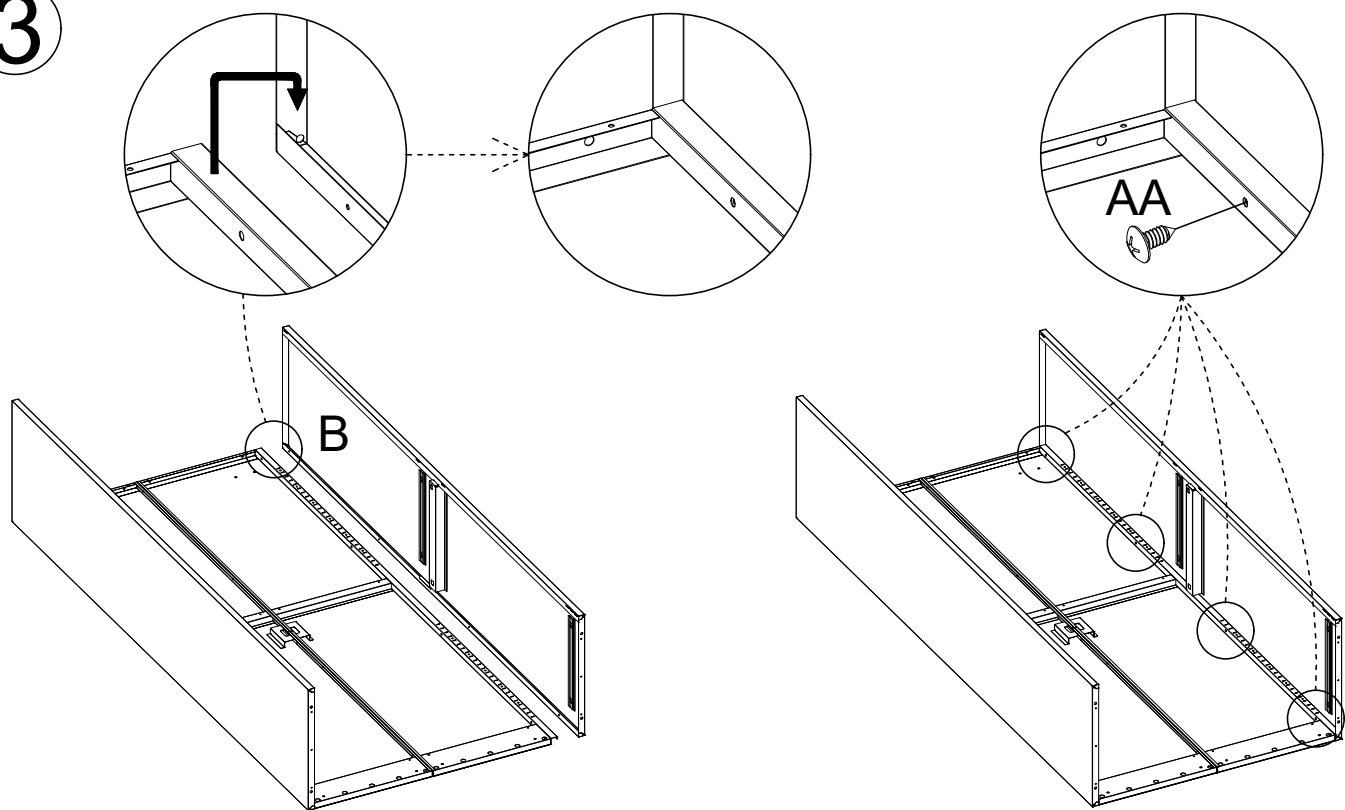
1



2

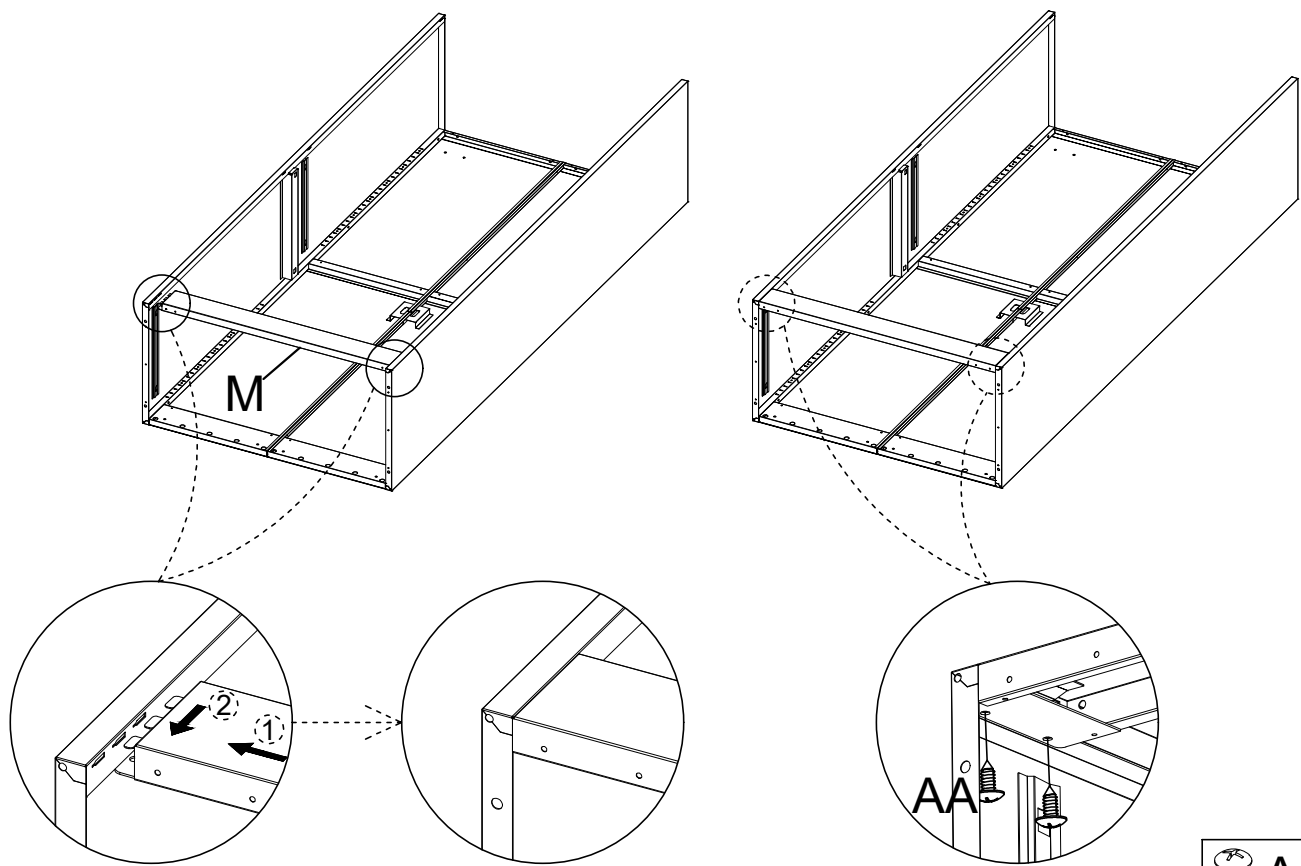


3



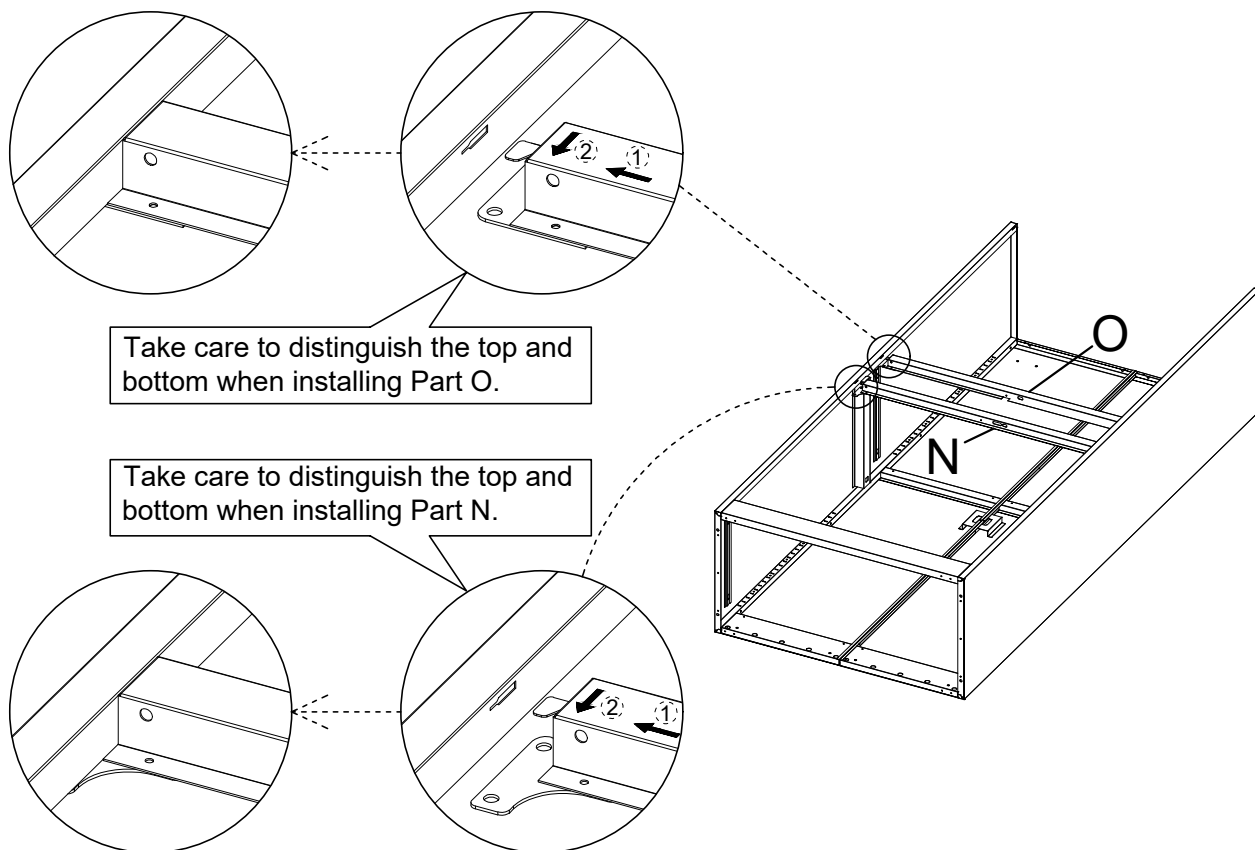
AA×4

4

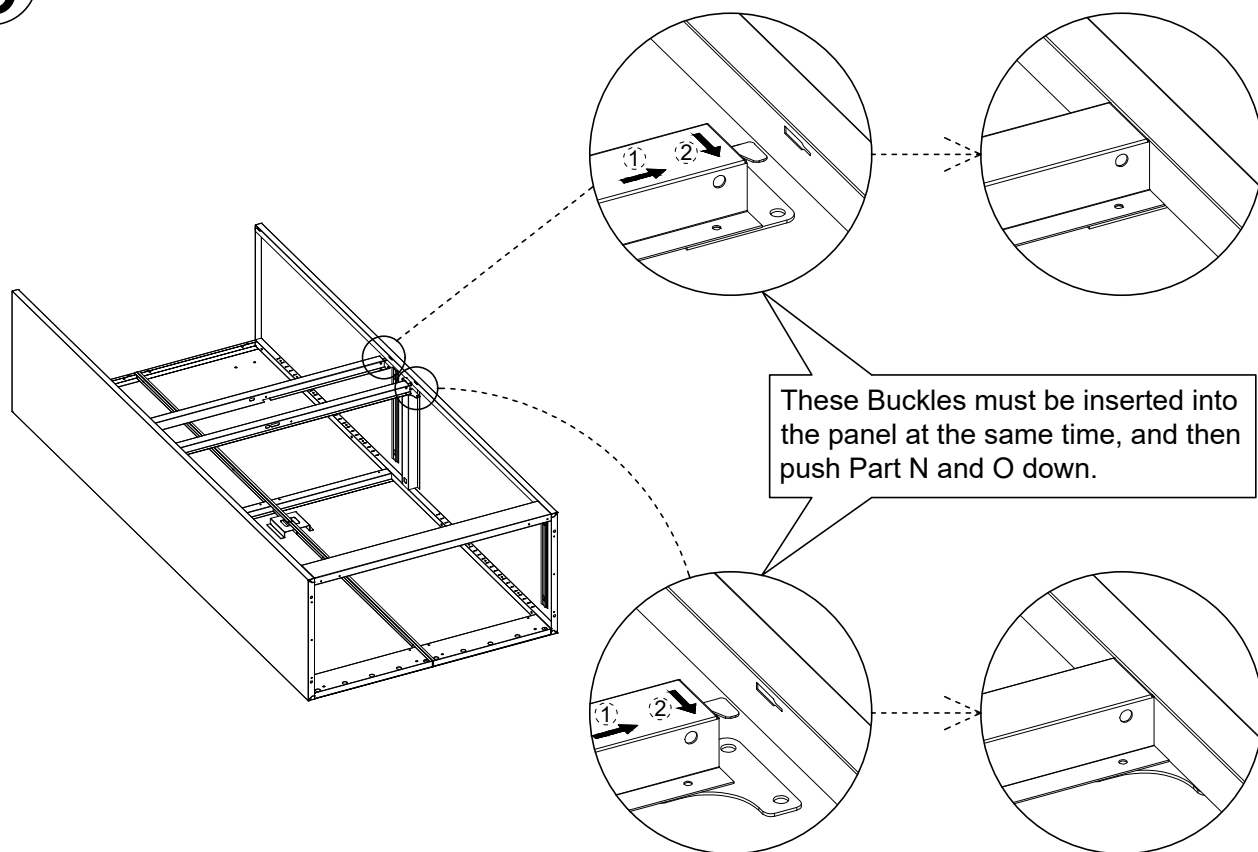


AA×4

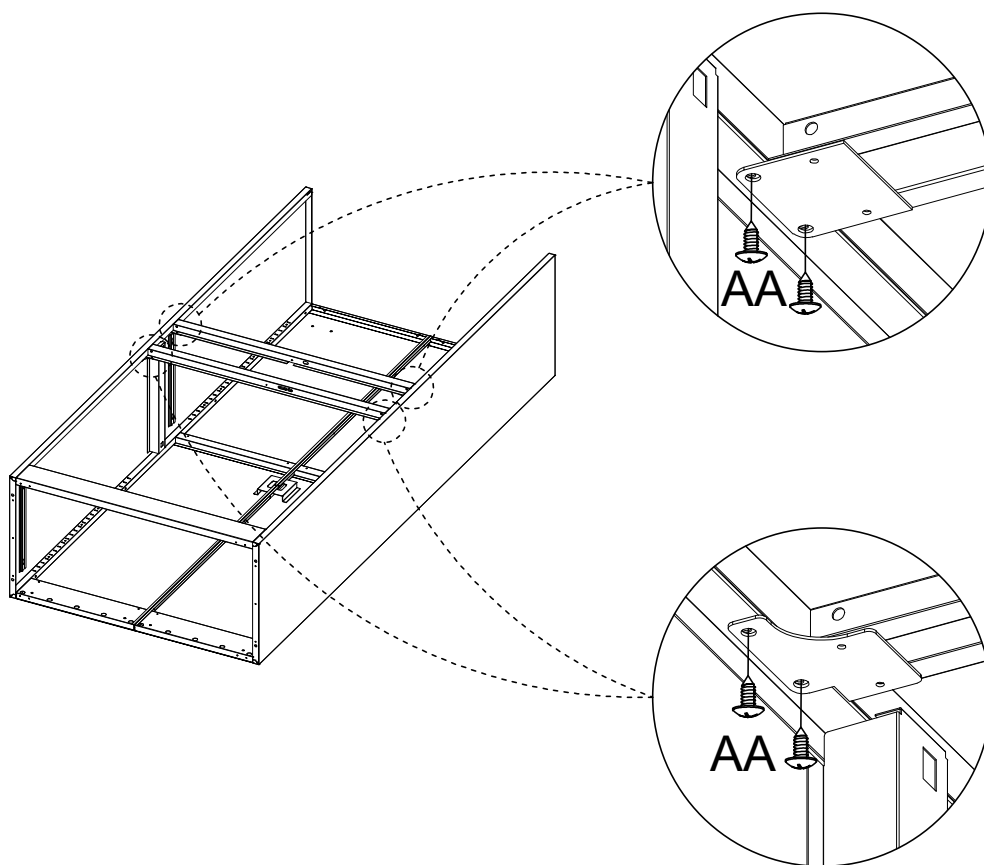
5



6

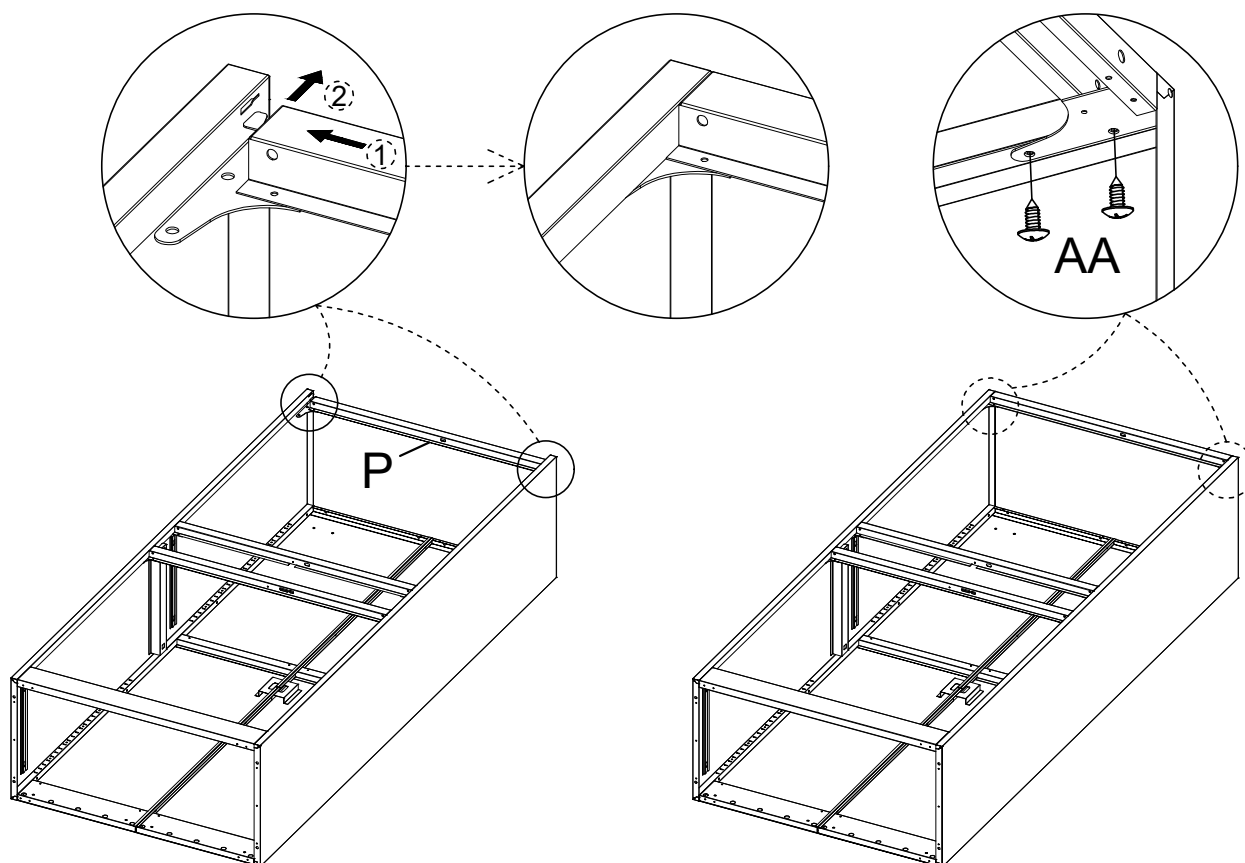


7



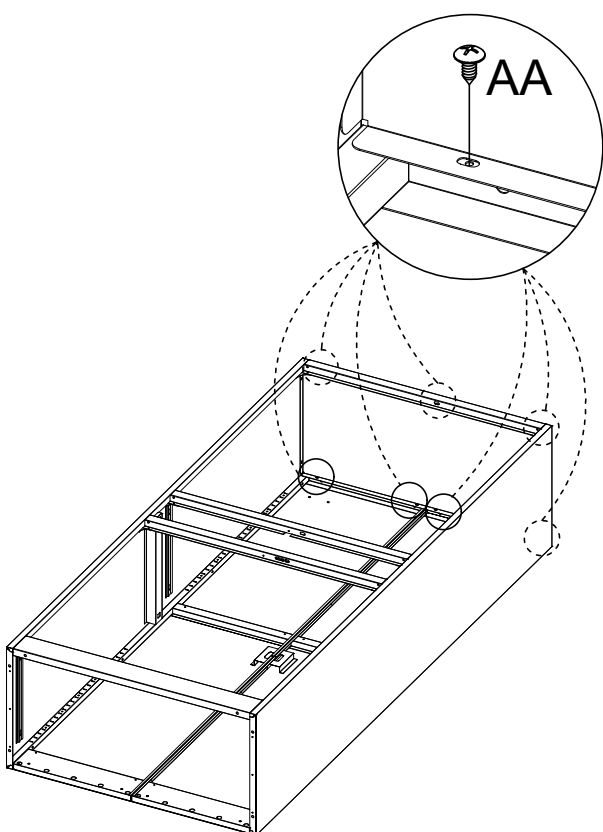
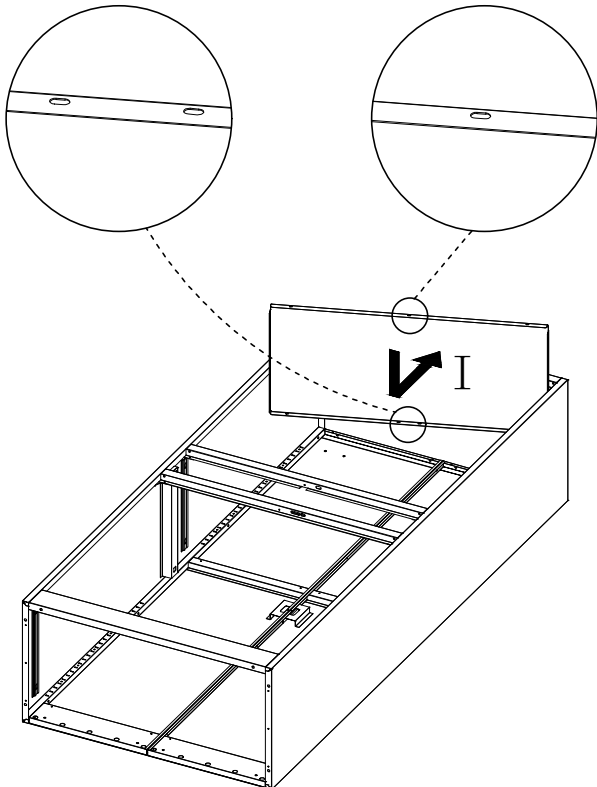
 AA×8

8



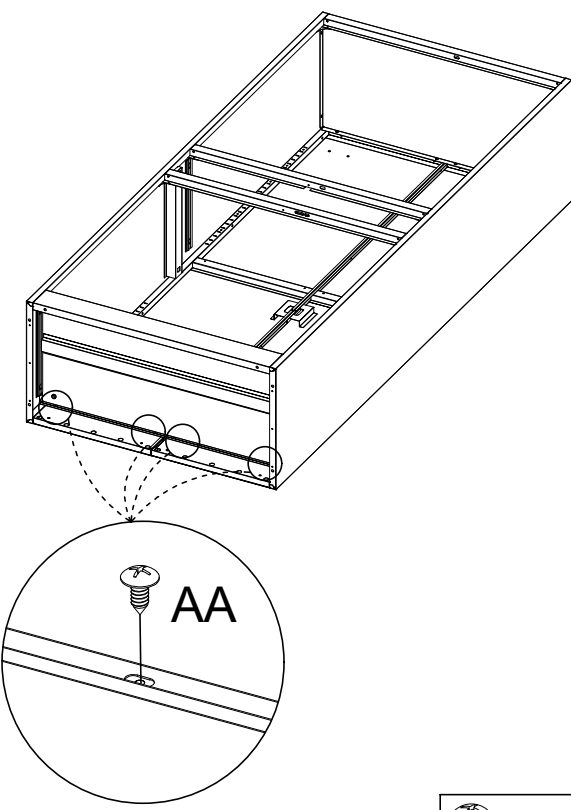
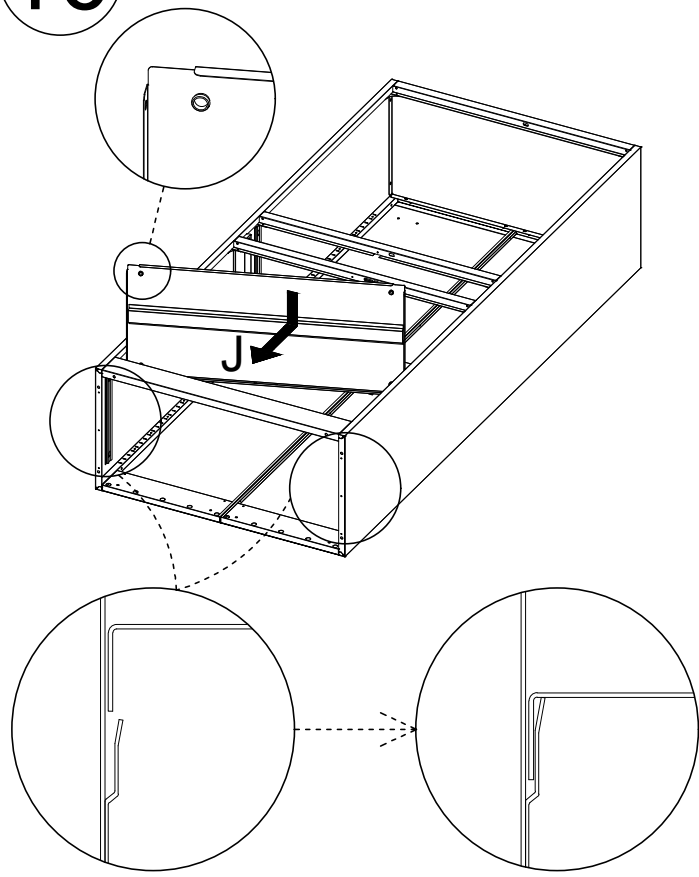
 AA×4

9



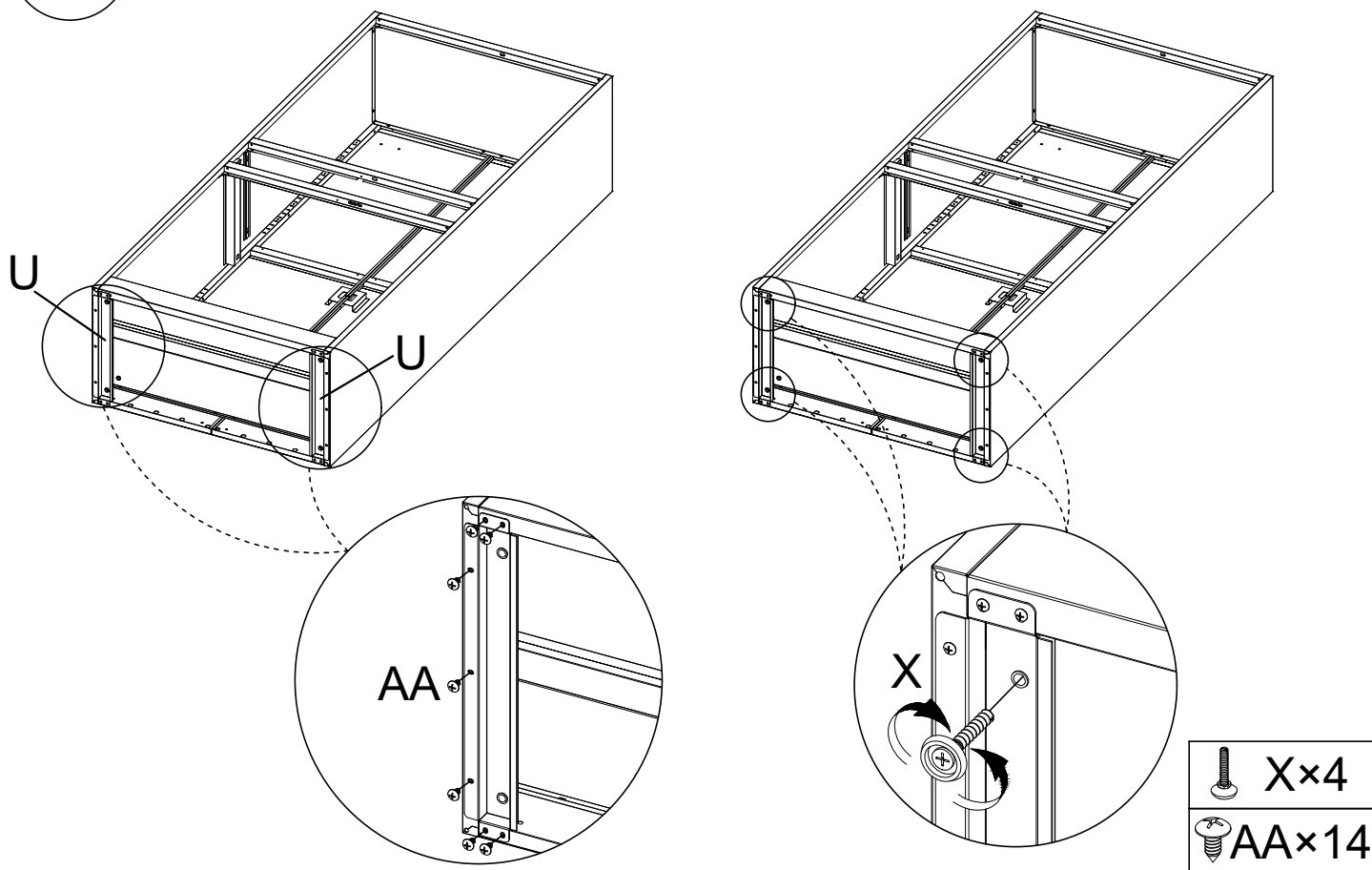
 AA×7

10



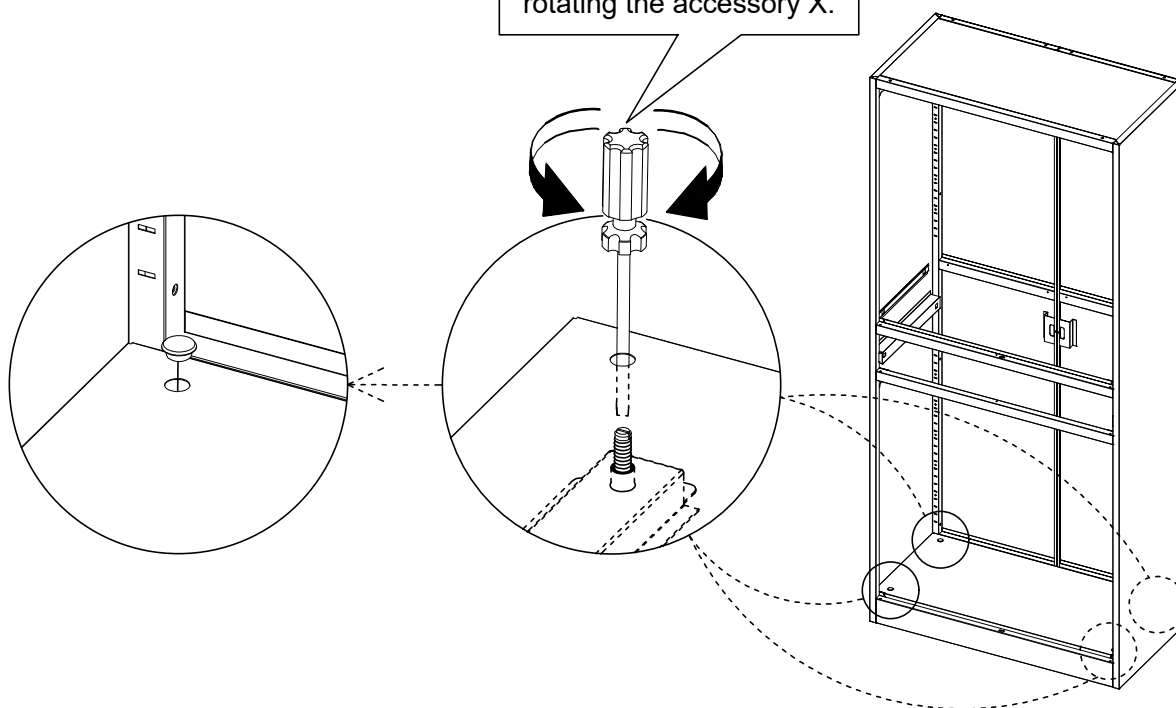
 AA×4

11



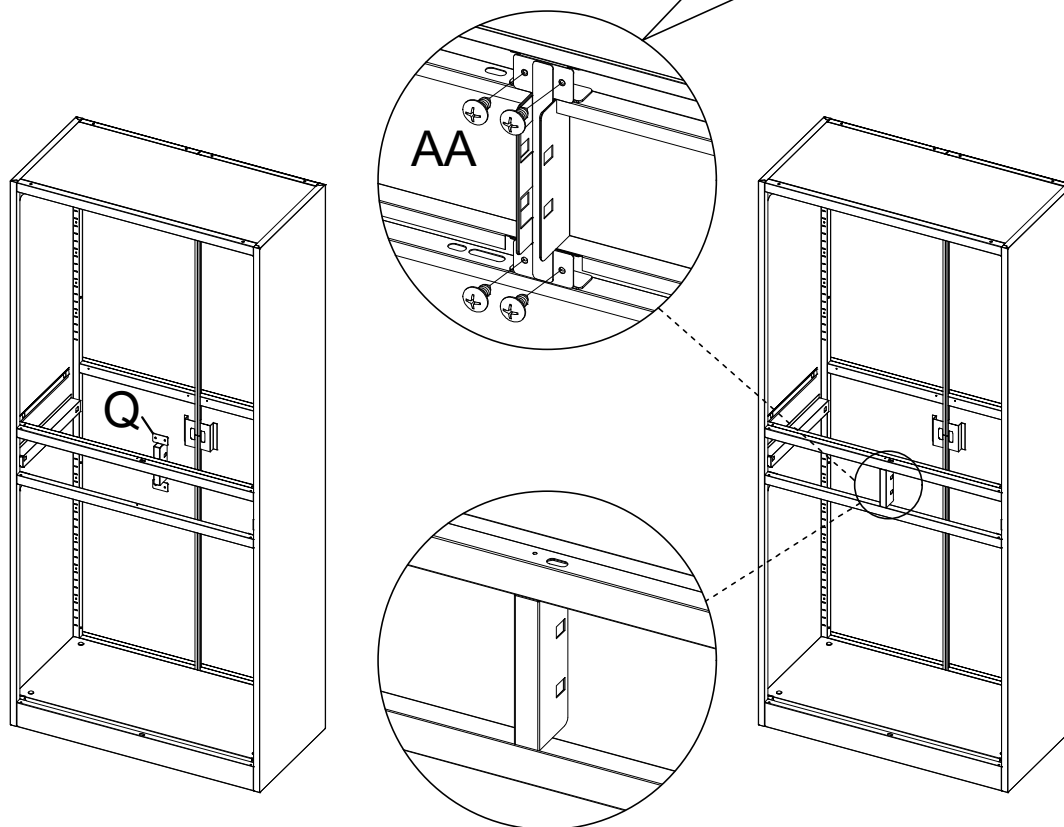
12

If the cabinet is uneven,
it can be adjusted by
rotating the accessory X.



13

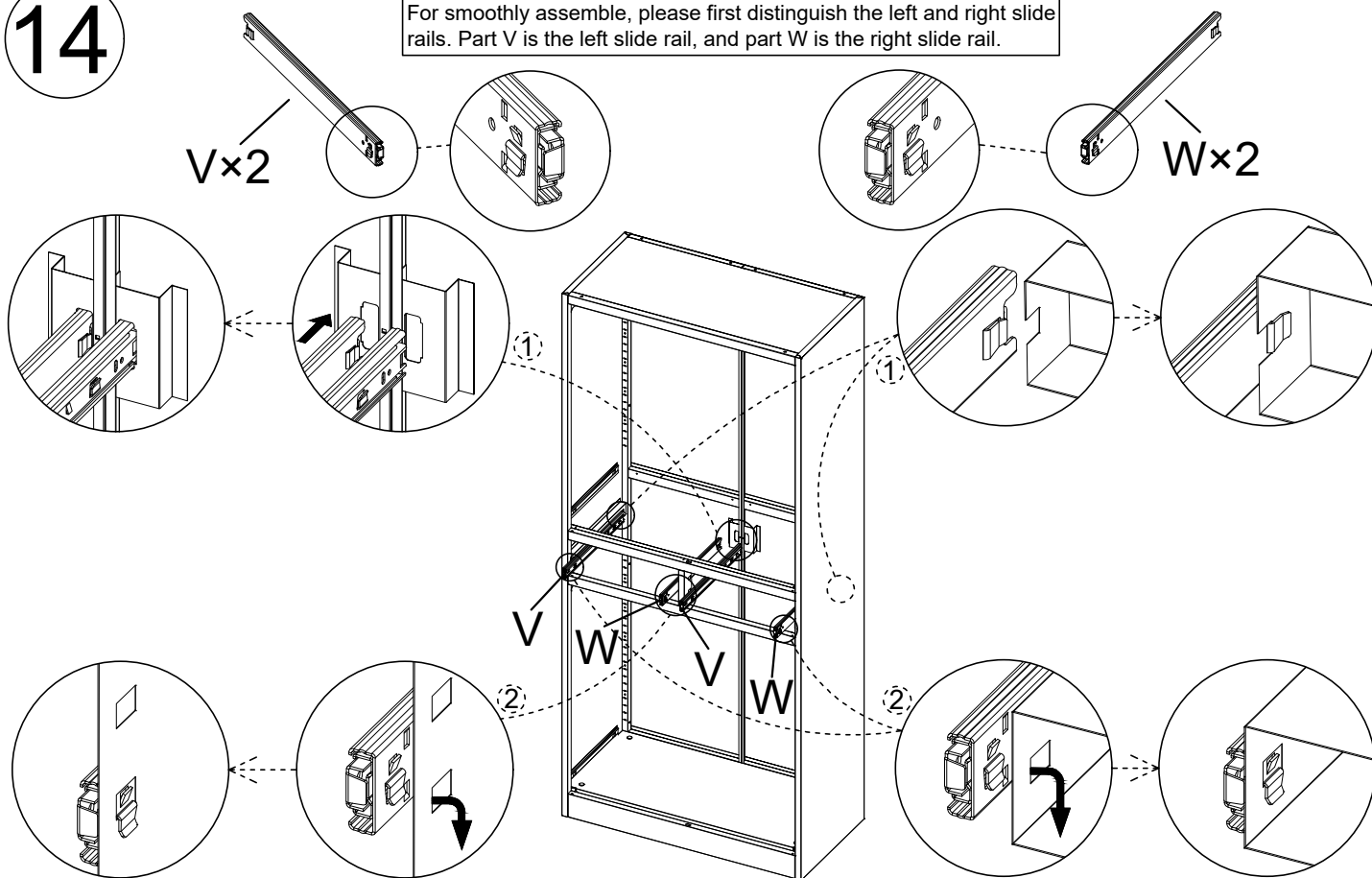
Install screws from inside the cabinet.



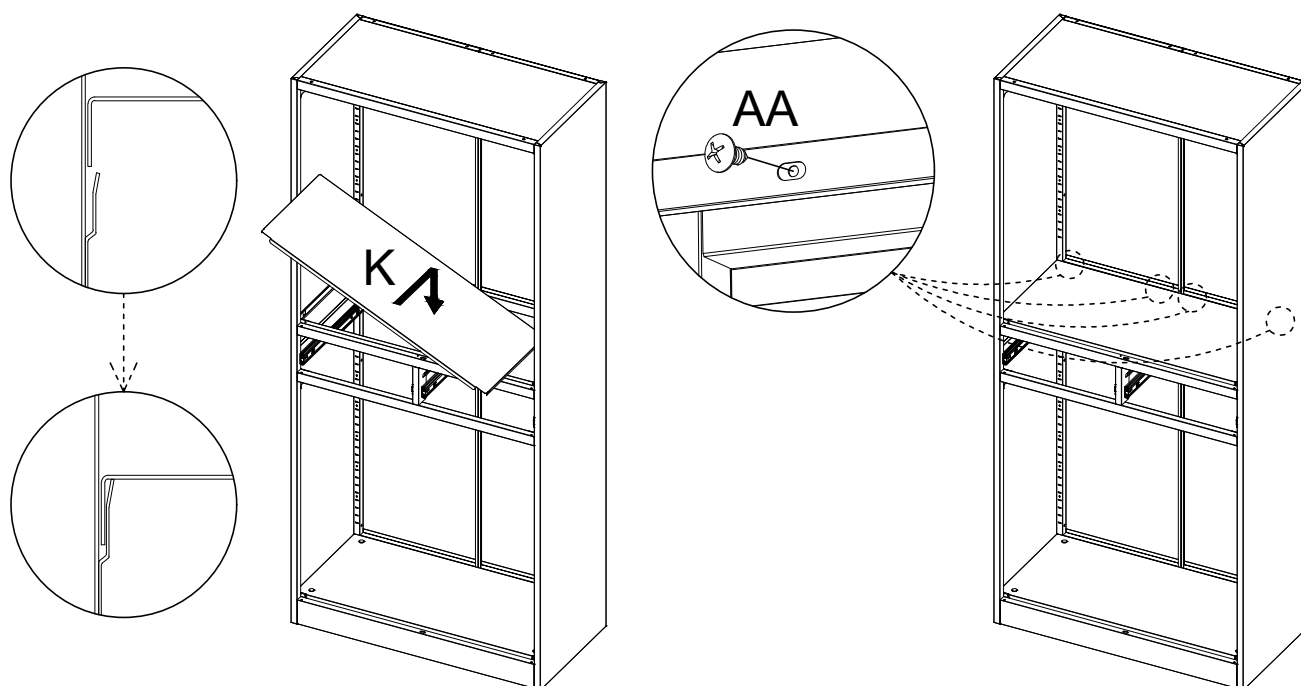
 AA×4

14

For smoothly assemble, please first distinguish the left and right slide rails. Part V is the left slide rail, and part W is the right slide rail.

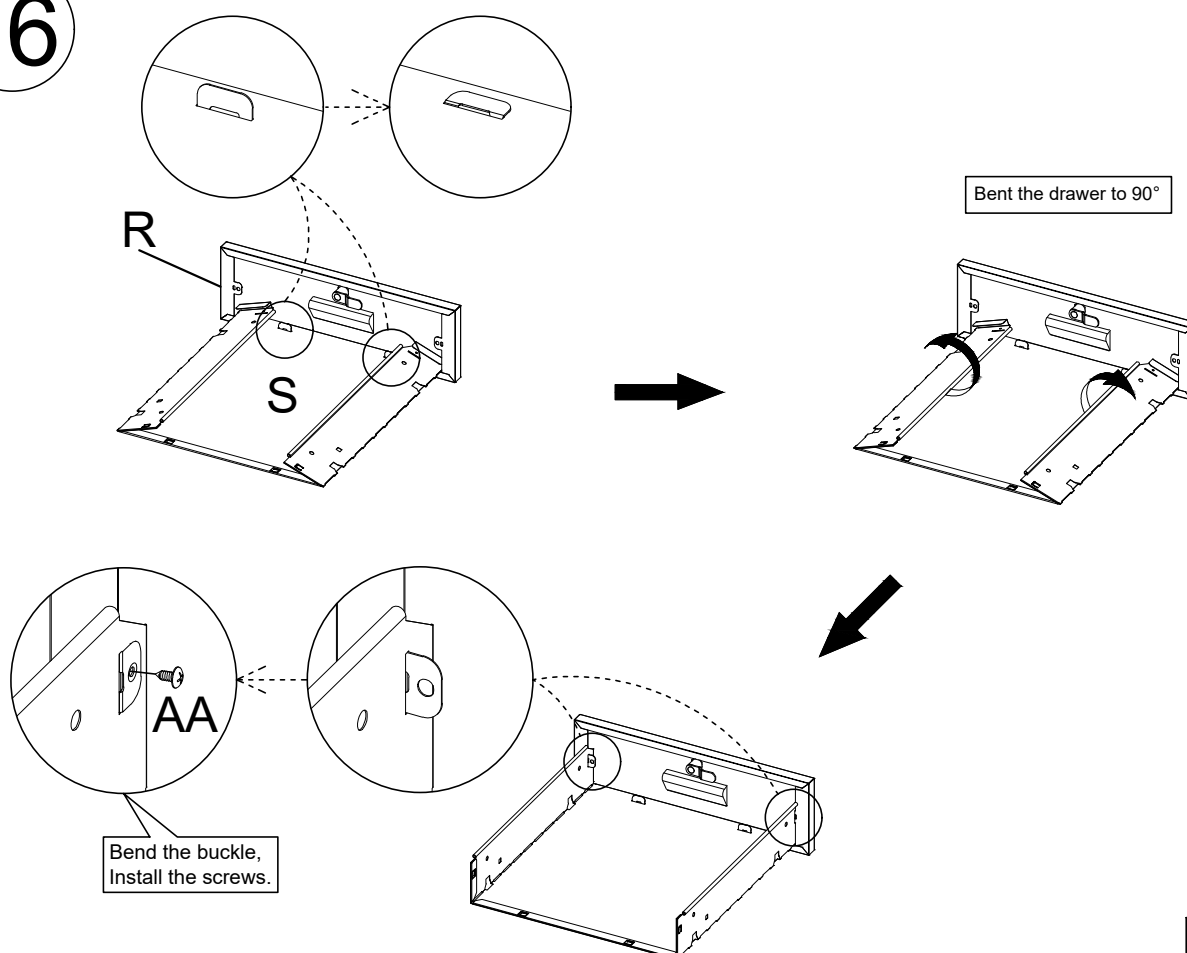


15



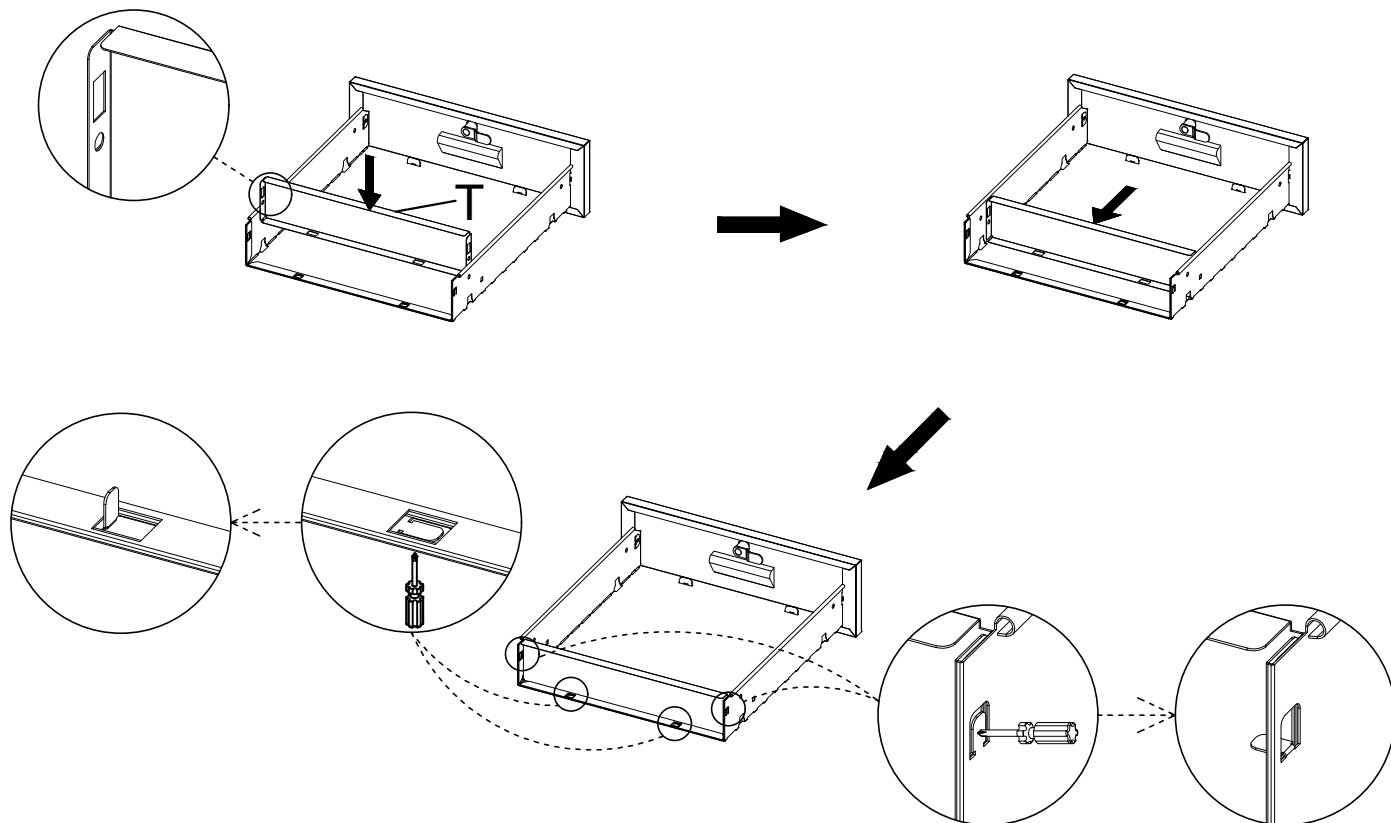
 AA×4

16



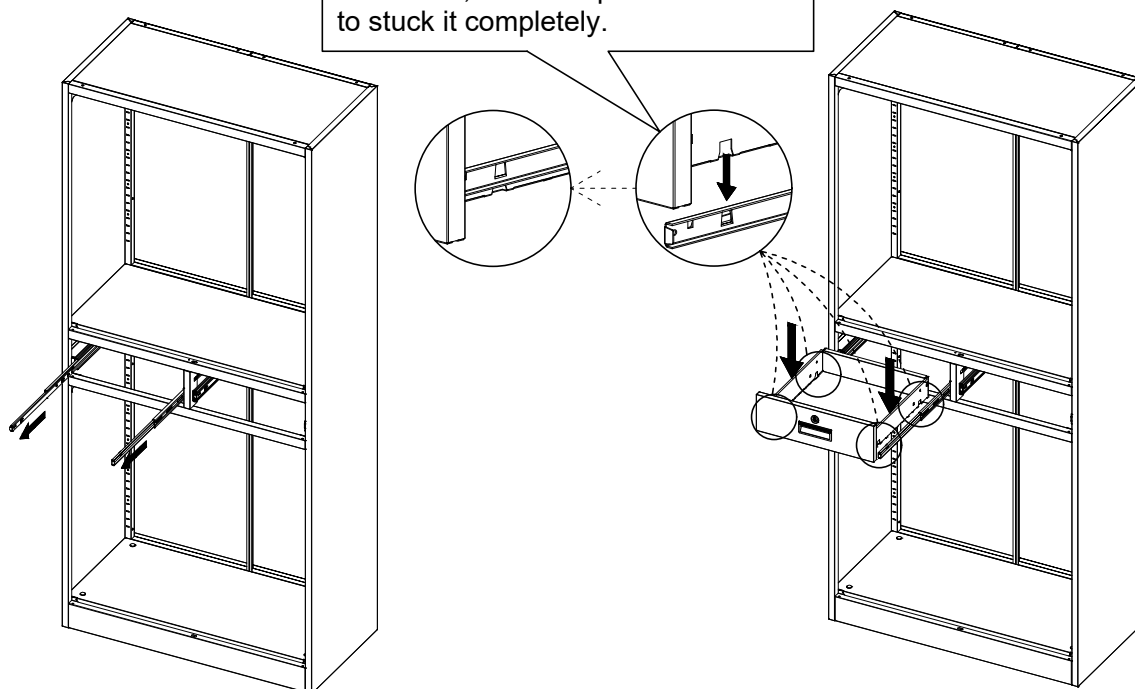
 AA×4

17



18

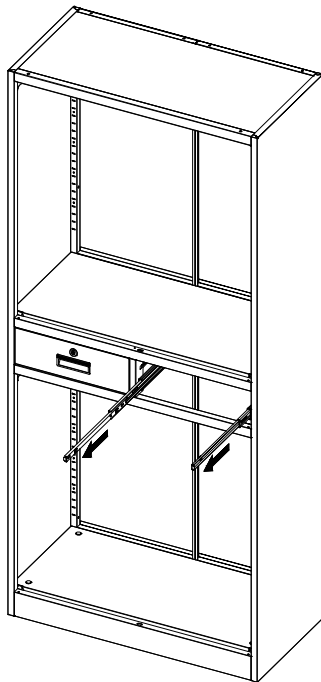
Using the Guide Rails on the left and right sides, snap the assembled drawers together as shown in the illustration, and then press the drawer to stick it completely.



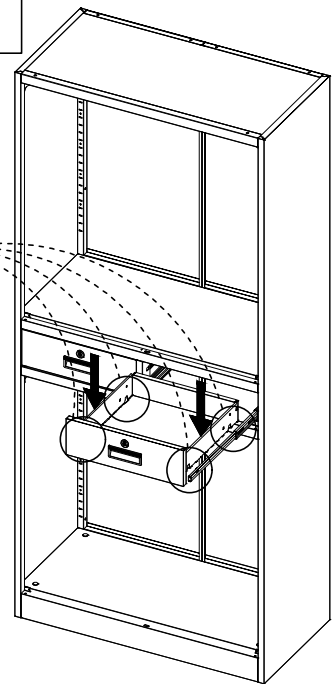
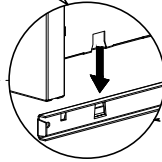
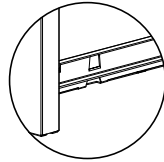
Pull out the two Guide Rails completely at the arrow position.

19

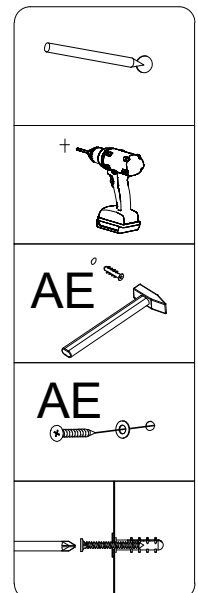
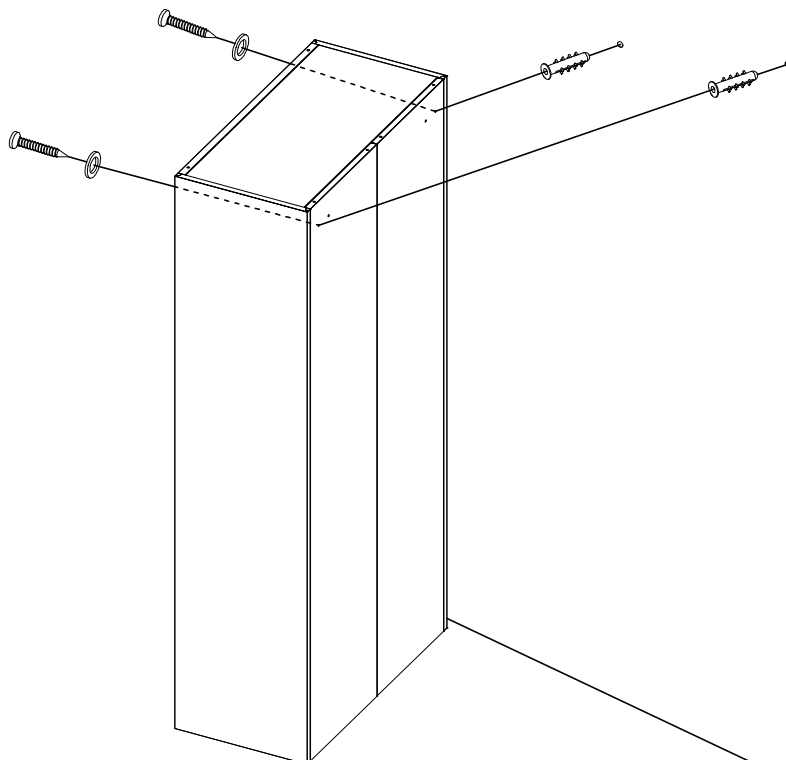
Using the Guide Rails on the left and right sides, snap the assembled drawers together as shown in the illustration, and then press the drawer to stick it completely.



Pull out the two Guide Rails completely at the arrow position.

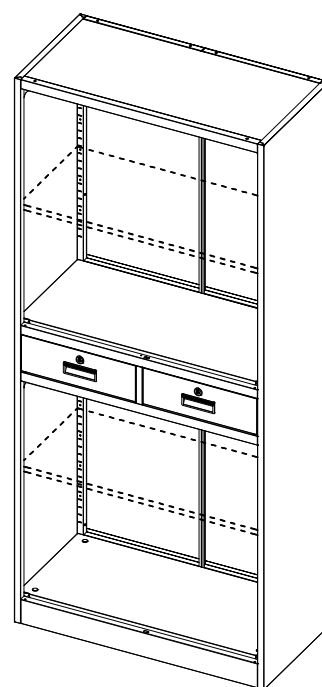
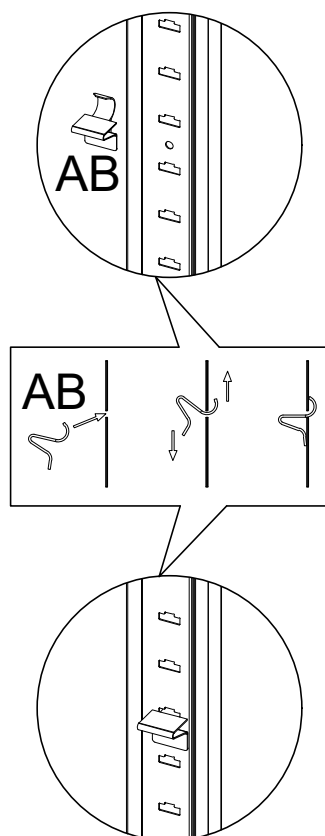
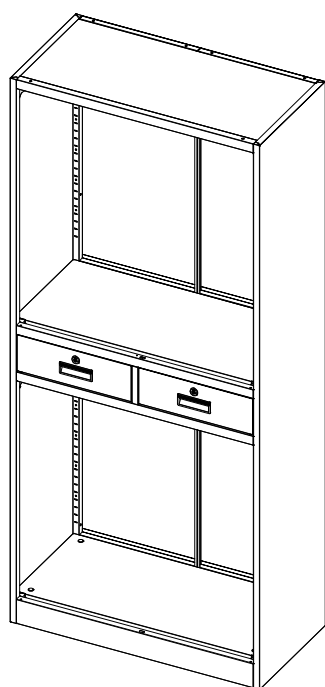


20



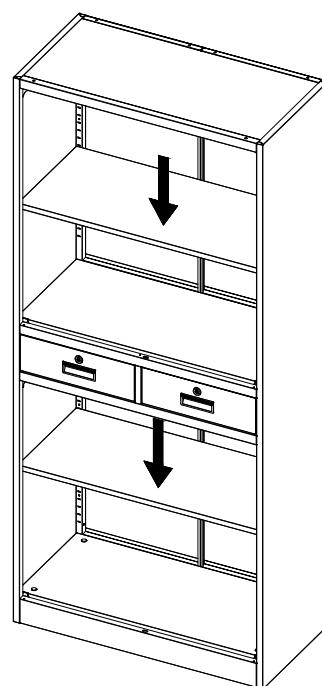
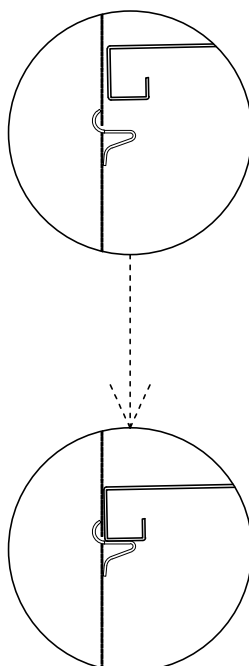
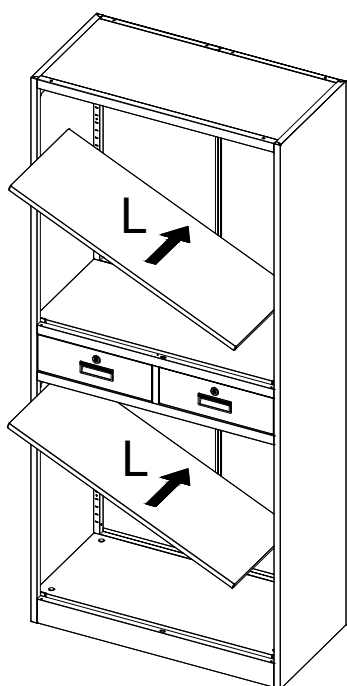
  AE×2

21

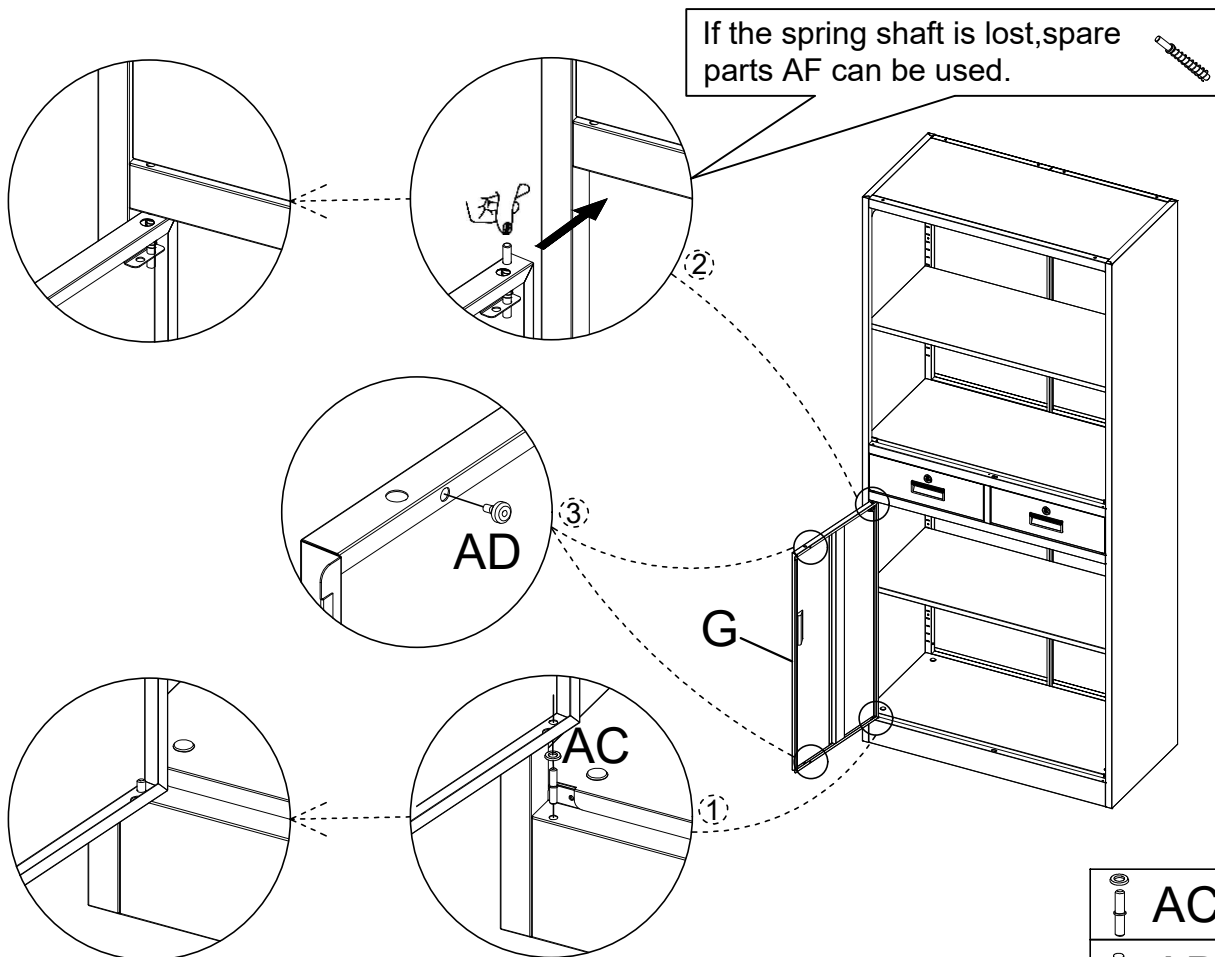


AB×8

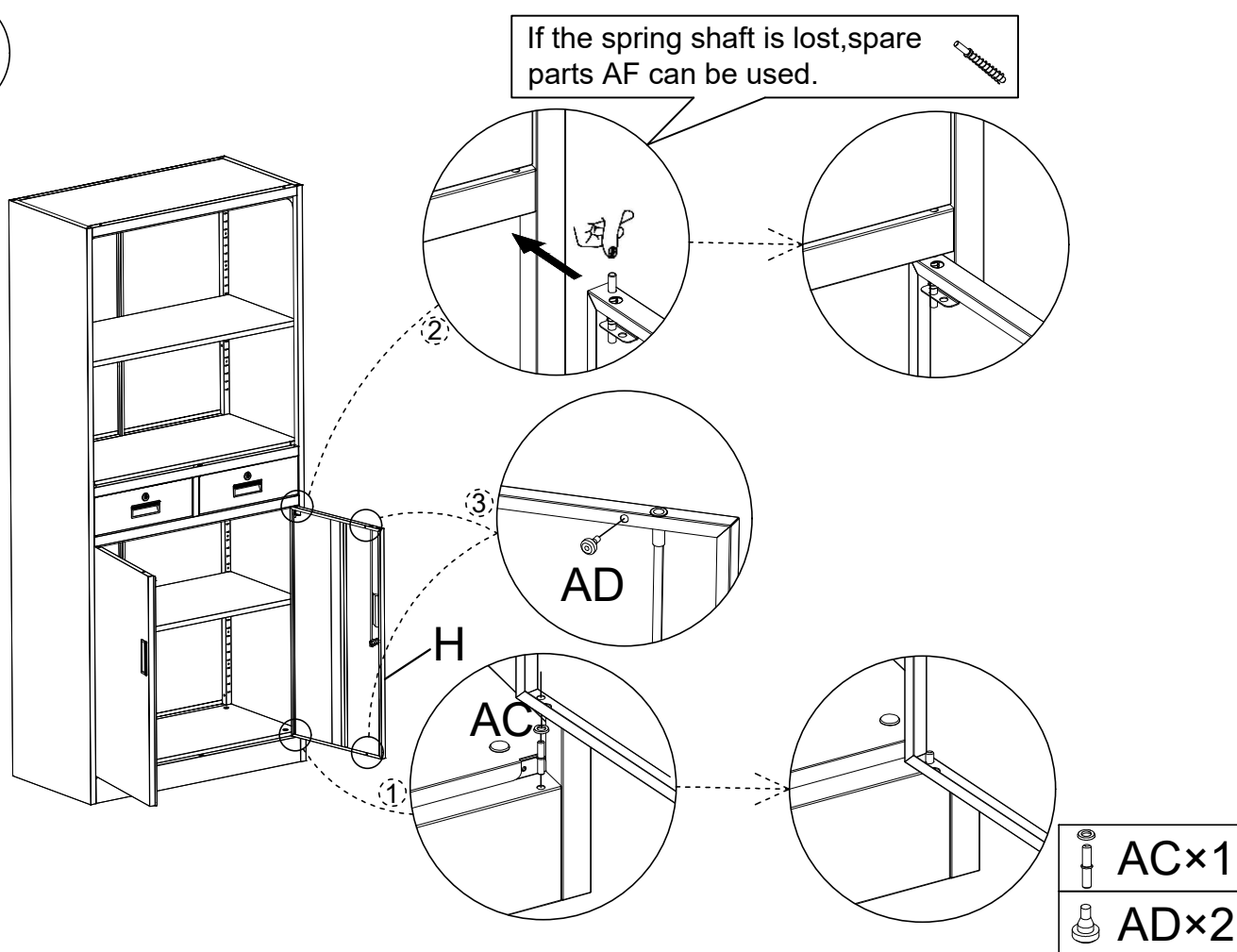
22



23

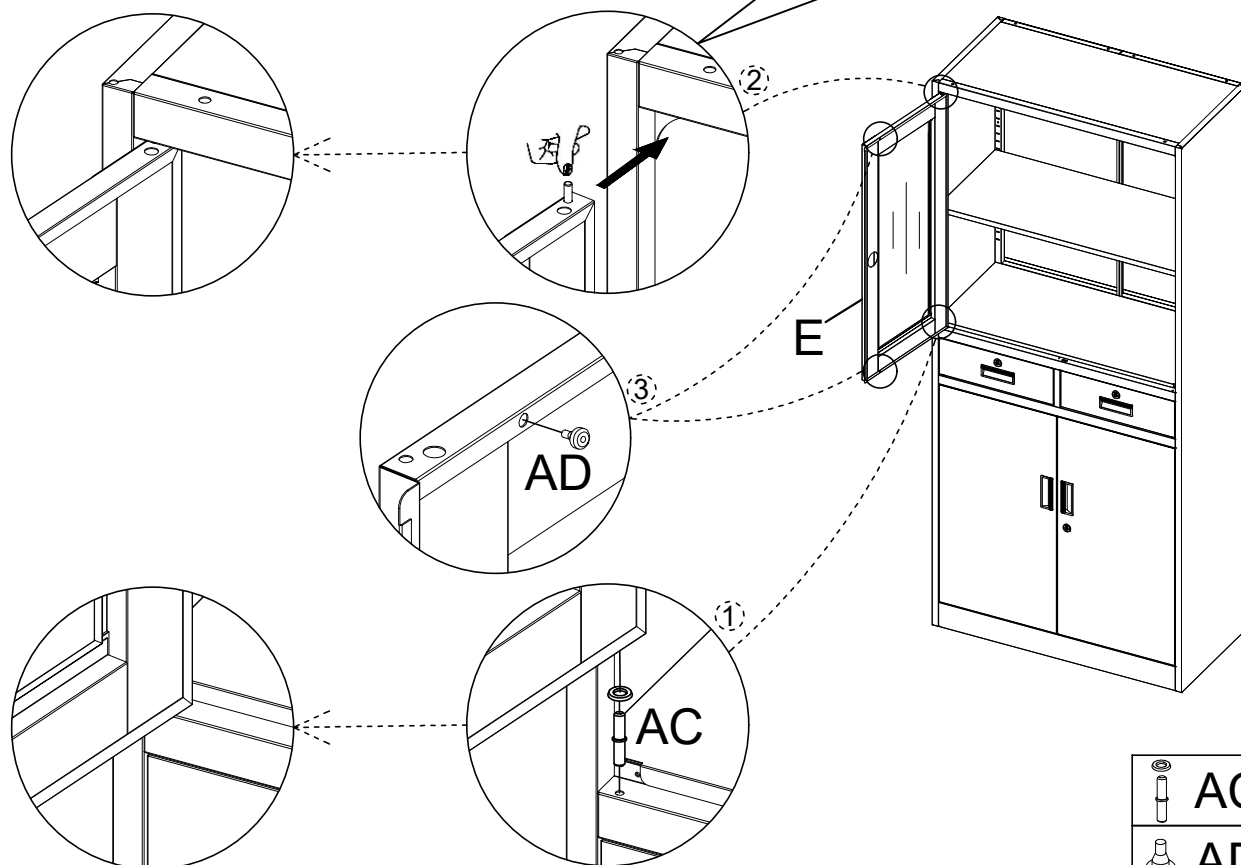


24



25

If the spring shaft is lost, spare parts AF can be used.



26

If the spring shaft is lost, spare parts AF can be used.

