



CYANNA  
VALLEY  
SPAS

# **COLD PLUNGE**

---

## OWNER'S MANUAL

# Premium Materials

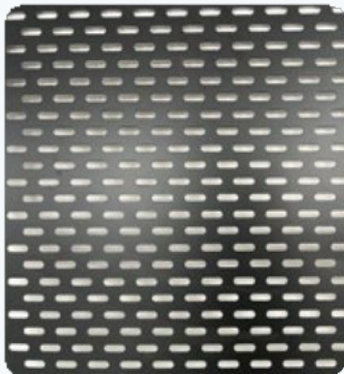
---

The Cyanna Valley Cold Plunge unit has several premium features. The acrylic shell provides a beautiful and durable seating area, the tri-layered cabinet provides efficient cooling combined with an aluminum frame for durability, and an insulated pipe sleeve to prevent condensation. Perfect for year-round outdoor use, energy-efficient, and reliable.

1 Acrylic Surface



2 Aluminum Frame



3 Tri-layered Side Cabinet



4 Insulation Sleeve



# Contents

---

|   |    |
|---|----|
| Installation and User Manual.....       | 1  |
| How To Setup .....                      | 2  |
| Important Safety Instructions .....     | 3  |
| Specifications .....                    | 5  |
| Using the Control Panel .....           | 6  |
| Changing the Filter .....               | 10 |
| How to Drain the Cold Plunge Unit ..... | 11 |
| Electrical Hook-Up .....                | 14 |
| Locate the Serial Number .....          | 15 |
| Troubleshooting .....                   | 16 |

# Installation & User Manual

---



**Warning!** Risk of fire, electric shock and and water leakage.



Your Cyanna Valley Cold Plunge unit includes a detailed Installation & User Manual. Follow all instructions in the Installation & User Manual closely.



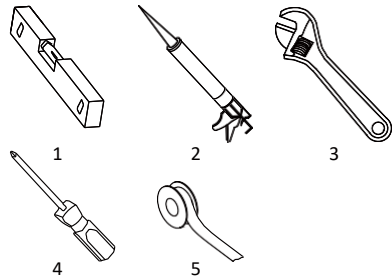
**Warning!** Improper installation, usage or maintenance can lead to loss of warranty, injury or property damage. Spa tub should be installed in accordance with BCA and local regulatory standards by qualified persons only. An isolation switch is recommended. Electrical installation must comply with AS:3000-Electrical Wiring Rules.

## Suggested Tools For Installation

---

The following tools are required to install your bathtubs. Additional tools may be required depending on the installation circumstances.

1. Bubble level
2. Sealant
3. Adjustable spanner or spanner in required sizes
4. Screw driver
5. PTFE sealing tape or suitable substitute



## Package List

---



Aqua-Shield Lid



HydroPur Filter



Easy-Access Stair



Cover

# How To Set Up

---

**Before plunging into your new Cyanna Valley Cold Plunge unit, please take a few moments to review the owner's manual and take note of the setup, safety and precaution information.**

1

Place the cold tub in a suitable location and fill it with water through the filter until the water level reaches the recommended mark as specified by the manufacturer.

2

Open the air bleed screw to exhaust air from the filter and pump housing. See page 10 for more details.

3

Plug the cold tub into a 120V/ 60Hz power source and set the desired temperature using the control panel.

4

Within a few hours, you can enjoy the refreshing experience of cold water therapy.

5

We strongly suggest regularly cleaning, sanitizing, and repeating these steps.

# Important Safety Instructions

---

## READ AND FOLLOW ALL INSTRUCTIONS

**Taking the plunge is a significant step, and Cyanna Valley Spas disclaims all liability for damages due to failure to follow the provided guidelines.**

- **Health Disclaimer**

If unsure, consult your doctor before using the Cold Plunge unit. While generally suitable for most individuals, those with reduced mobility or sensory/cognitive abilities should use the Cold Plunge unit under supervision and only if knowledgeable about safe usage and potential risks.

- **Temperature Awareness**

Start with a higher temperature (59°F / 15°C) and a shorter duration (1-2 minutes) instead of going straight for 15 minutes at 46°F (8°C).

- **Gradual Adaptation**

Tolerance to cold water varies. Gradually increase Cold Plunge unit usage time. Sudden immersion can shock the body; enter slowly, keeping face, shoulders, and hands above water until breathing is steady.

### **Cold Exposure Risks**

- Cold shock response decreases with exposure experience. Hypothermia is a risk - it leads to loss of consciousness and heart failure. Duration in cold water depends on factors like temperature, body size, and experience. Consult your doctor. Start with brief dips to find limits. Exit if uncomfortable.

- **Safety Precautions**

- Supervise children around the Cold Plunge unit
- Pregnant women, children, and those with medical conditions must consult a doctor before using.
- Avoid alcohol or drugs before use.
- Do not use in extreme weather or flood conditions.
- Ensure proper drainage to avoid water accumulation.

- **Maintenance**

- Be cautious when entering and exiting the Cold Plunge unit
- Keep the inlet clean to protect the pump.
- Avoid using electrical appliances nearby when empty.
- Use only approved cleaning agents; rinse thoroughly.
- Do not pressure wash the Cold Plunge unit
- Keep the cover on to prevent injuries and water ingress.
- For repairs, contact Cyanna Valley Spas Customer Service

- **Power Supply Safety**

Ensure the power supply is on an RCD protected circuit for safety.

# Important Safety Instructions

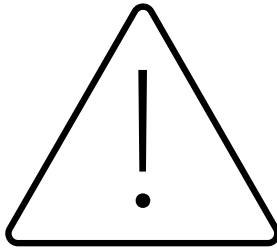
---

**WARNING:**

- People with infectious diseases should not use a spa or hot tub.
- To avoid injury, exercise care when entering or exiting the spa or hot tub.
- Do not use drugs or alcohol before or during the use of a spa or hot tub to avoid unconsciousness and possible drowning.
- Do not use a spa or hot tub immediately following strenuous exercise.
- Prolonged immersion in a spa or hot tub may be injurious to your health.

**CAUTION:**

- Maintain water chemistry in accordance with manufacturer's instructions.
- \* Please read the instructions carefully and use according to the instructions.  
Children should use this product under the close supervision of adults.



# Specification

## Power Supply

Rated: 120V, 60 Hz, 7.5A  
Water Flow: 20gal/Min  
68L/Min

## Materials

Acrylic  
Aluminum  
High-density PU

## Dry Weight

294 lbs  
133 kg

## Water Capacity

79 gallons  
300 liters

## Temperature Control

46-104°F (8-40°C)



## Draining

2-way draining:  
normal drain Groove and  
heat pump condensate  
drain outlets

## Antifreeze function

With the auto freeze-proof  
function, heating will initiate  
when the water temperature  
drops below 40°F (4°C) and  
will automatically turn off  
when the temperature  
reaches 48°F(9°C)

## Filtration

HydroPur Filter within  
arm's reach for easy  
configuration and  
maintenance

## Cover

An aesthetic Aqua-shield Lid  
that optimizes space, and  
gives an interior-grade look

By default the product is equipped with the following features as indicated in the illustration above:

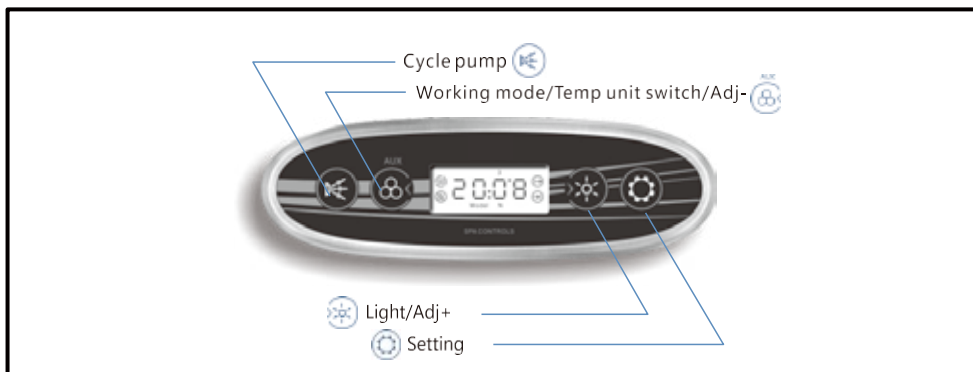


1. Water Pump
2. UV Sterilizer
3. Balboa® Mini Inverter Chiller
4. Insulation Sleeves



# Using the Control Panel

## Panel Function Diagram



## Touch Pad Usage Instructions

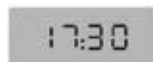
### 1. Temperature setting



When the system is powered on and not in setting mode, press " " to switch the temperature unit (°F or °C). The system will automatically save the selected unit.

To set the temperature, press the " " key until you enter the temperature setting interface. The LCD will display the temperature unit, which will flash. Then use the " " and " " keys to adjust the temperature value between the setting range 46-104°F ( 8-40°C ). The system will store the temperature value you set.

### 2. Clock setting



When the system is powered on, press " " button to enter the clock setting mode. The LCD will display either the hour or minute values, which will flash. Then, press the " " and " " buttons to adjust the hour and minute values.

### 3. Working Mode

When the system is powered on and not in the setting mode, press the " " key for 2 seconds to switch to the desired working mode.

The system offers three default working modes (when the system is powered on, it is in the standard mode):

- *Standard mode (LCD displaying Model N):* Heat & cool function will be valid in 24 hours. If system time falls within the water cycle set time period, filtering water cycle function will be valid.
- *Economy mode (LCD displaying Model E):* If the system time falls within the water cycle set time period, the filtering water cycle function is valid. If it falls within the heating set time period, the heat & cool function will be valid. If it is outside the set time period, the freezing proof function will be started.
- *Sleeping mode (LCD displaying Model D):* Freezing proof will be started and other loads will be turned off and can not be controlled by keys.

# Using the Control Panel

## Panel Function Diagram

### 4. Constant Temperature Function

The constant temperature function automatically activates in standard mode. In economic mode, it starts within the designated time frame. In sleep mode, the anti-freeze function runs automatically.

Once the constant temperature function is initiated, the circulation pump starts first, and the heat pump activates shortly after. If the constant temperature function is turned off, the heat pump shuts down first, followed by the circulation pump.

When the constant temperature function is enabled, the system regulates the heat pump's operation based on water temperature and the set temperature, ensuring automatic temperature control.

***The temperature control setting (standard model and economy mode) are as follows:***

- If the water temperature is  $\geq$  the set temperature + 34°F (1°C), the cooling function of the heat pump is activated;
- If the water temperature is  $\leq$  the set temperature - 34°F (1°C), the heating function of the heat pump is activated;
- If water temperature = set temperature, the heat pump stops.

***To set the heat & cool time period (Economymode and sleeping mode only):***

- When system is powered on, press " " till entering timing heating time period setting interface. The correspondent time value will flash. Press " " and " " to adjust the time.
- "1" and "2" in LCD stand for time period 1 and time period 2. " " and " " in LCD stand for starting and ending time of time period.
- The system will automatically store the value after timing heating setting.



## 5. Timing water cycle

The control system offers two time periods for setting water circulation. Before using the Cold Plunge unit, please configure these two time periods.

When the system operates in standard and economy mode, you can set the water cycle time periods. In sleeping mode, the timing of the water cycle is not applicable.

In any time periods, the water cycle will be started, otherwise, it will turn off.

### *To set the water cycle time period:*

- When system is powered on, press " " to set the timer for water circulation. The correspondent time value will flash. Press " " and " " to adjust the time.
- "1" and "2" in LCD stand for time period 1 and time period 2. " " and " " in LCD stand for the starting and ending time.
- The system will automatically store the value after setting the time of water circulation.



## 6. Freezing Proof

The freezing proof function will automatically work. When water temperature is lower than 40 °F (4 °C), heating will be started. When the temperature reaches 48 °F (9 °C), heating will be turned off.

## 7. Circulation Pump

When the control system is powered on and operates neither in sleeping mode nor setting mode, press the key " " to control the circulation pump.

Circulation pump will turn off automatically after running for 30 minutes.

# Control Panel Function

---

## 8. UV Sterilization

UV Sterilization will automatically start when system is powered on.

## 9. Children lock protection setting

When the system is powered on, press constantly " " until it goes to children lock setting interface. Then press " " to set the children lock function. When the setting is done, the system will save it.



If no button is touched within 3 minutes, then all the buttons will be locked, and no operation can be done. At the same time, the LCD displays "LOC"; press and hold any button for 3 seconds to unlock the panel. All the buttons work and "LOC" disappears from the screen.

## 10. Light

When the control system is powered on and operates neither in sleeping mode nor setting mode, press the key " " to control light. Press the key " " for 2 seconds to turn off the underwater light.

Light has two modes. In on / off mode, light turning on and off are controlled. In RGB mode, the control regulation is as below:

- state 1 auto color change (color changing among state 2 to state 8 in cycle)
- state 2 red
- state 3 green
- state 4 yellow
- state 5 blue
- state 6 purple
- state 7 cyan
- state 8 white
- state 9 turning off

# Preparation for Your New Cold Plunge Unit

## Change Your Cold Plunge Filter

### Exhaust Air and Replace Filter.

#### 1 EXHAUST AIR

Loosen the filter exhaust valve counterclockwise, then let the air exhaust from the filter.



Filter exhaust valve.



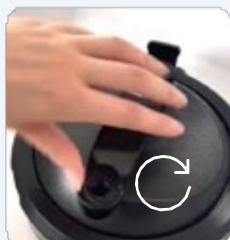
Loosen valve counterclockwise.



Air exhaust.

#### 2 EXCHANGE FILTER

Regularly cleaning your filter is the simplest and most effective way to maintain clear water. A dirty filter can cause power and system issues. Here are some steps about how to exchange the filter.



Loosen the locking ring.



Remove the filter cover and the whole filter.



Remove the old filter and insert the replacement. Repeat the previous steps.



# Preparation for Your New Cold Plunge Unit

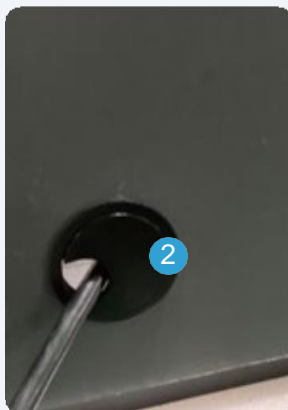
## Efficiently draining your Cold Plunge

### Power Supply and Drainage

#### POWER SUPPLY



1. Power Supply



2. Install the thread hole cover

#### DRAINAGE



1. Normal drain outlet

2. Groove and heat pump condensate drain outlet

\* Self-prepare an external drainage pipe



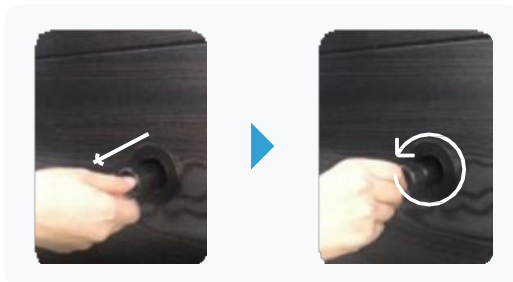
**CAUTION:** the two drain outlets on the cabinet are designed for water drainage purposes only, **DO NOT** fill water from this point.

# Preparation for Your New Cold Plunge Unit

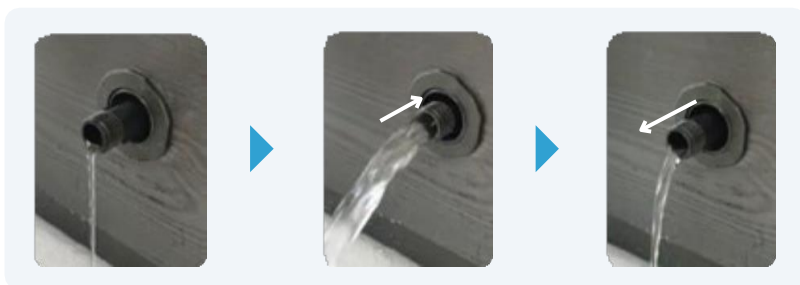
## Efficiently draining your Cold Plunge Unit

### Normal Drainage

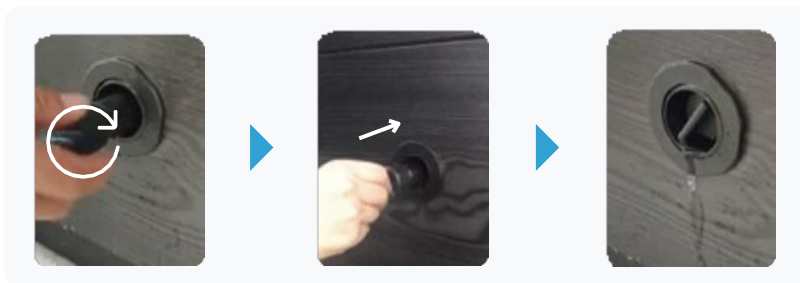
- 1 To drain water, pull out the drainage valve and rotate the cap counterclockwise.



- 2 Water will begin to drain. Pushing the valve inwards increases the water flow, while pulling it out reduces the water flow.



- 3 To stop the drainage, rotate the cap clockwise and push the valve inwards.



# Preparation for Your New Cold Plunge Unit

Efficiently draining your Cold Plunge

## Condensate Drainage



Self-prepare  
the accessories



Install the connector



Connect the hose and it  
is ready to use



# Preparing for Your New Cold Plunge Unit

## Opening the Front Door Panel for Electrical Hookup

The following electrical connections must be performed by a licensed electrical contractor. Unscrew and remove the two corner panels on each side of the spa's front door.

### Remove and install the skirt

#### 1 REMOVE



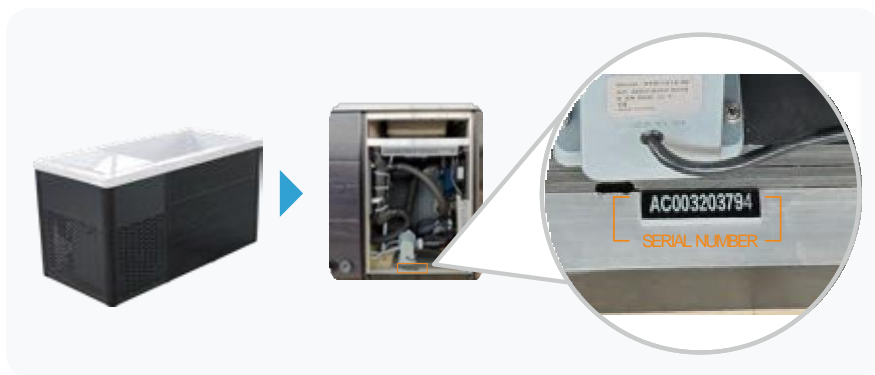
#### 2 INSTALL



# Troubleshooting

---

- Where to find the serial number on your Cold Plunge unit?
- If any after-sales service needs arise regarding the product, please provide this serial number.



| Symptom | Possible Solutions |
|---------|--------------------|
|---------|--------------------|

**Start-up problem**

|                  |   |
|------------------|---|
| Pump won't prime | <p>Sometimes air may get trapped in the pump during spa filling. You may notice that after filling and starting the spa, the pump appears to be non-functional. You can hear the pump running, but there's no water movement.</p> <ul style="list-style-type: none"><li>• The pump will not work properly while air is trapped in it.</li><li>• Continuing to operate the pump in this way will cause damage.</li></ul> <p>Whenever you fill your spa, fill it through the filter canister and make sure all jets are open.</p> |
|------------------|---|

**Power and system problems**

|   |  |
|---|--|
| System won't start up or breaker keeps shutting off                           | Power may be shut off. If this continues, contact your dealer or a qualified spa technician.   |
| Communication problem between the control mainframe and the circulation pump. | Please check the connecting wire between the control main unit and the heat pump and replace it if necessary. Or please check if the heat pump is powered. |
| The control panel cannot communicate with the control mainframe               | Check the connecting wire between the control panel and the control main unit. Replace if necessary.   |

|                   |  |
|-------------------|--|
| Does not turn off | <p>Spa may be trying to heat up. Check if spa is in Ready or Rest mode. In cold climates, if spa is not equipped with full foam or any kind of insulation, it will try to maintain the set temperature. Set the spa to low temperature range and set the temperature to 80°F (27°C).</p> <p>Maintaining your water quality helps the enjoyment of your spa and extends your spa's life by preventing damage from neglect and chemical abuse. Spa may be in filter cycle.If it is, this is normal and no adjustment is necessary.</p> |
|-------------------|--|

| Symptom   | Possible Solutions  |
|---|---|
| <b>Chiller problems</b>                                 |   |
|   | <ul style="list-style-type: none"><li>• Spa may be in high-temperature range. Set the spa to low-temperature range.</li><li>• Jet valves may be partially or fully closed. Open the jet valves.</li><li>• The filter may be dirty or may need to be replaced. Clean or replace the filter.</li><li>• Pump may have airlock. Remove airlock by priming the spa.</li><li>• The water level may be too low. Fill the spa until the water level is 4 to 6 inches from the top.</li><li>• The suction fittings may be blocked. Remove any debris that may be blocking them.</li></ul>  |
| Water does not get cold                                 | <ul style="list-style-type: none"><li>• The temperature is not turned down low enough. Lower the temperature on topside control.</li><li>• The filter skimmer may be blocked. Remove the blockage.</li><li>• Cover the spa to retain its warmth and prevent cold from penetrating. Ensure the cover is in place whenever the spa is not in use.</li><li>• Gate valves may be closed. Open gate valves. Note: Never operate your spa with closed gate valves.</li><li>• The cooling element may be old, defective, or coated with scale. For further assistance, please contact your dealer.</li><li>• Spa may be running in heating mode.</li></ul> |
| <b>Other problems</b>                                   |   |
| The water is murky                                      | <ul style="list-style-type: none"><li>• Ensure the filter is clean. This should be rinsed every month and changed every 3 months.</li><li>• Check if there is a green light on the ozonator. Change the water if it has become too dirty.</li></ul>   |
| Bad smell   | <p>If the water looks clean and clear there should be no adverse smells. Run a clean cycle several times.</p> <p>If the water looks murky, drain and change it.</p>   |
| The temperature differs from what the thermometer shows | <p>The internal temperature probe is calibrated to within 0.3o +/-</p> <p>There could be an issue with the temperature sensor or PCB board.</p>   |