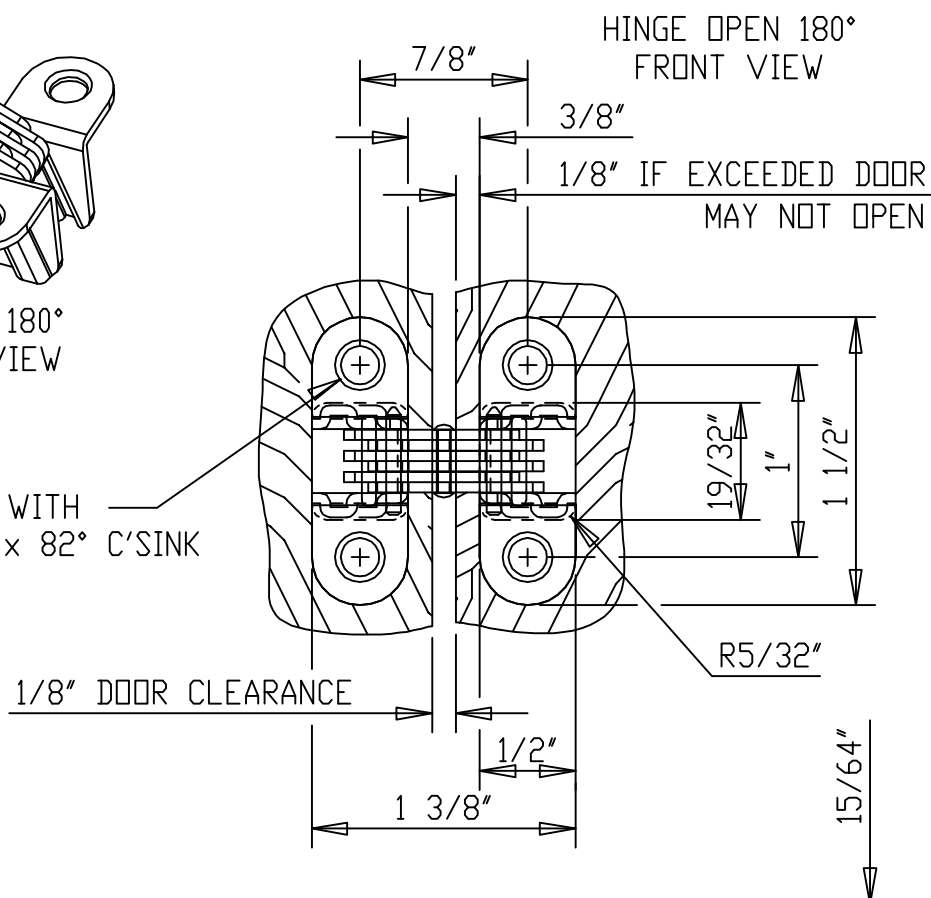


HINGE OPEN 180°  
ISOMETRIC VIEW

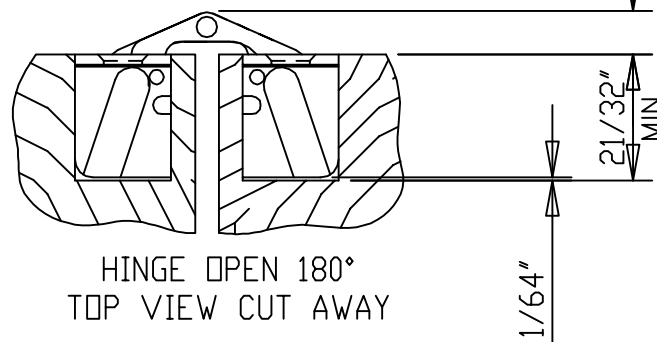
.20" DIA WITH  
.26" DIA x 82° C'SINK



1/8" DOOR CLEARANCE

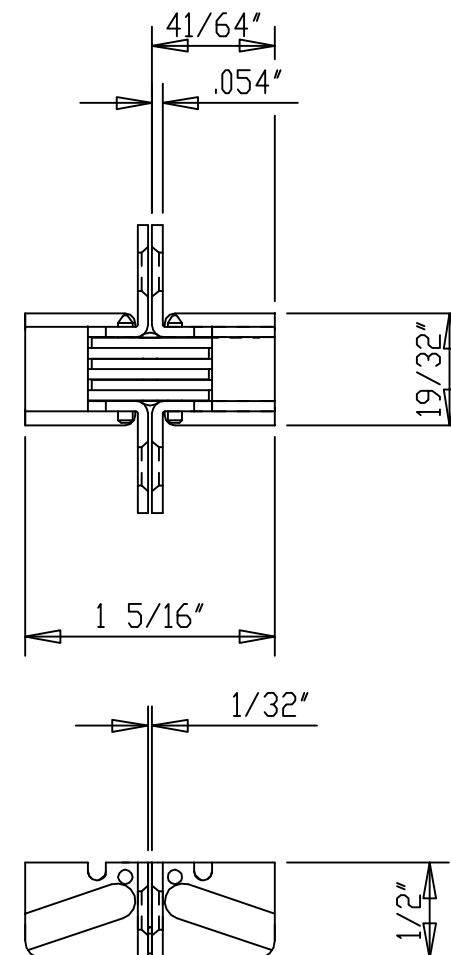
R5/32"

SUPPLIED:  
WOOD SCREW  
#5 x 3/4"  
SPECIAL ORDER:  
MACH. SCREW  
#5-40 x 1/2"



HINGE OPEN 180°  
TOP VIEW CUT AWAY

HINGE CLOSED  
FRONT VIEW CUT AWAY



HINGE CLOSED  
TOP VIEW CUT AWAY

MIN. MATERIAL THICKNESS IS 11/16"  
DO NOT SCALE DRAWING  
ALL DIMENSIONS ARE IN INCH  
DOOR CLEARANCE REDUCES TO 1/64" WHILE CLOSING  
SEE DWG# 4477-C IF ADDING MATERIAL TO DOOR FACE AND/OR FRAME FACE

**UIIP** ©Copyright  
Universal Industrial Products, Inc.  
One Coreway Drive  
Pioneer, Ohio 43554-0628

SCALE: 1 = 1

DRAWN BY: LHH

HINGE TEMPLATE

DATE: 5/01/11

#303 SOSS INVISIBLE HINGE

DRAWING # 303