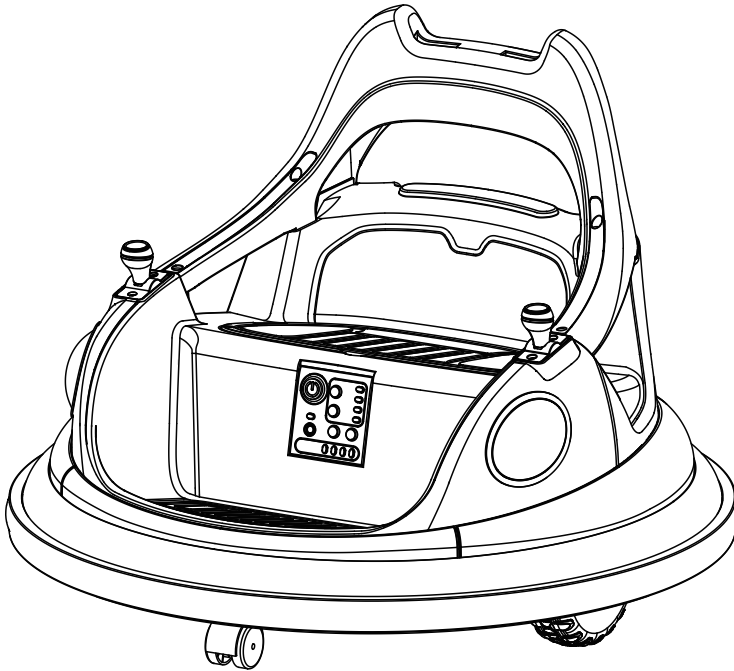


Children's Toy Bumper Car

BATTERY POWERED RIDE-ON



Owner's Manual with Assembly Instructions

Styles and colo(u)rs may vary.
Made in China.

The owner's manual contains important safety information as well as assembly, use and maintenance instructions.

The Ride-on Car must be assembled by an adult who has read and understands the instructions in this manual.

Keep the package away from children and dispose of properly before use.

Keep this manual for future reference.

On the purchase of your new Ride-On.

This ride-on will provide your child with many miles of riding of enjoyment. To help assure you and your rider a safe ride we ask you to please read this manual carefully, and keep it for future reference.

Follow the recommendations in this manual, they are designed to improve the safety and operation of your ride-on car and it's rider.

SPECIFICATIONS:

Battery	12V4.5AH*1
Charger	12V500mA

Suitable age: 37-96 months

Load Capacity: Under 30kg

Speed: 2.5 km/h

Size of car: 65 * 65 * 49 cm

Power way: Charging type

Charge time: 8-12 hours

 **WARNING!**

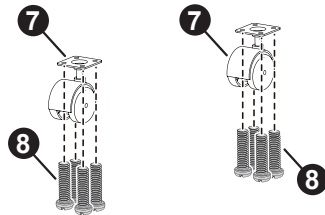
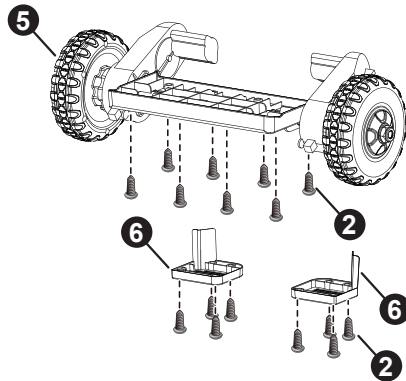
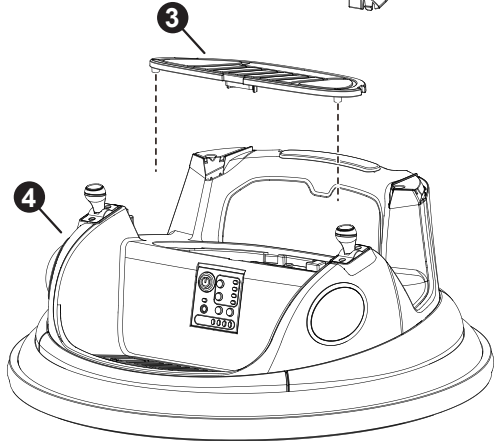
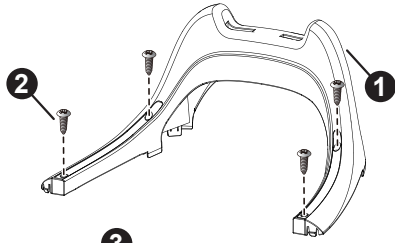
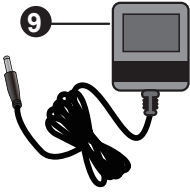
- **CHOKING HAZARD** - Small parts. Not suitable for children under 36 months. The product contains small parts, keep children away when assembling.
- **ADULT ASSEMBLY REQUIRED.**
- Always remove protective material and poly bags and dispose before assembly.
- Protective equipment should be worn. Always wear shoes and sit in the seat when operating the vehicle.
- Only drive on level ground. Never use on the lawn.
- Keep your hands, hair, and clothes away from moving parts.
- Never leave child unattended. Direct adult supervision is required. Always keep child in view when child is in vehicle.
- To reduce the risk of injury, adult supervision is required. Never use in roadways, near motor vehicles, on or near steep inclines or steps, swimming pools or other bodies of water, always wear shoes, and never allow more than 1 rider.
- Never use in unsafe conditions such as snow, rain, loose dirt, mud, sand, or gravel, otherwise may result in an unexpected accident such as tipping over, and could damage the electrical system or battery
- Not to be used in traffic.
- This toy should be used with caution since skill is required to avoid falls or collisions causing injury to the user or third parties.
- This toy is unsuitable for children under 36 months due to its maximum speed; Maximum user weight is 30kg.
- This toy has no brake.

 **BATTERY INFORMATION**

- Non-rechargeable batteries are not to be recharged.
- Rechargeable batteries are to be removed from the toy before being charged.
- Rechargeable batteries are only to be charged under adult supervision.
- Different types of batteries or new and used batteries are not to be mixed.
- Batteries are to be inserted with the correct polarity.
- Exhausted batteries are to be removed from the toy.
- The supply terminals are not to be short-circuited.

 **WARNING!**

The remote control is not a toy, and is only allowed to be operated by adults.



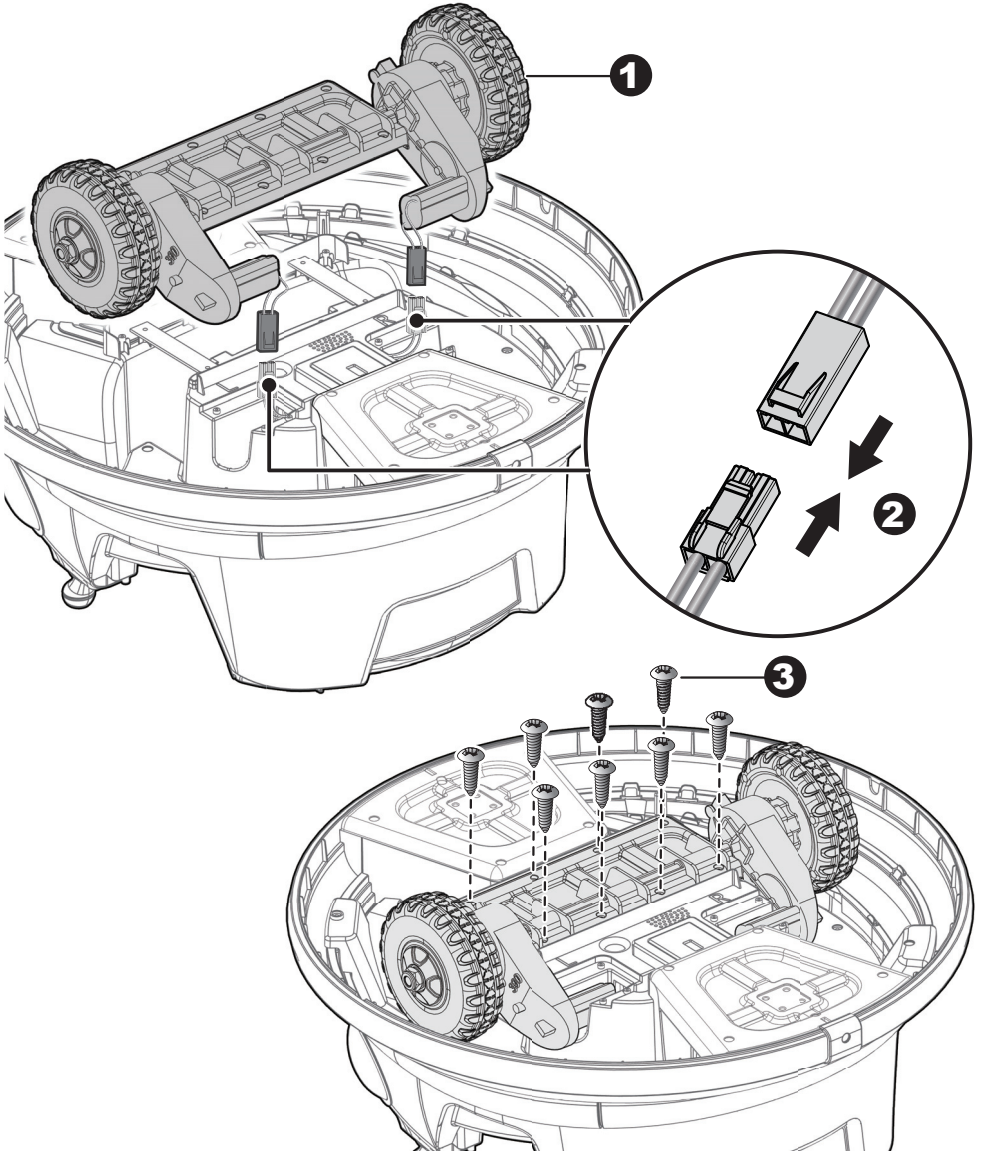
Parts List | 4

PART NO.	PART NAME	Q'ty (pcs)	REMARKS
1	Back rest	1	
2	Ø4x12 screw	20	Placed in the assembly package
3	Seat	1	Screwed on the vehicle body
4	Vehicle body	1	
5	Driving wheel assembly	1	
6	Motor hood	2	
7	Universal wheel	2	
8	M5x25 machine screw	8	Screwed on the bottom of the body
9	Charger	1	
10	Stickers	1	
11	Remote controller	1	For R/C type only

Assembly tools required (not included):

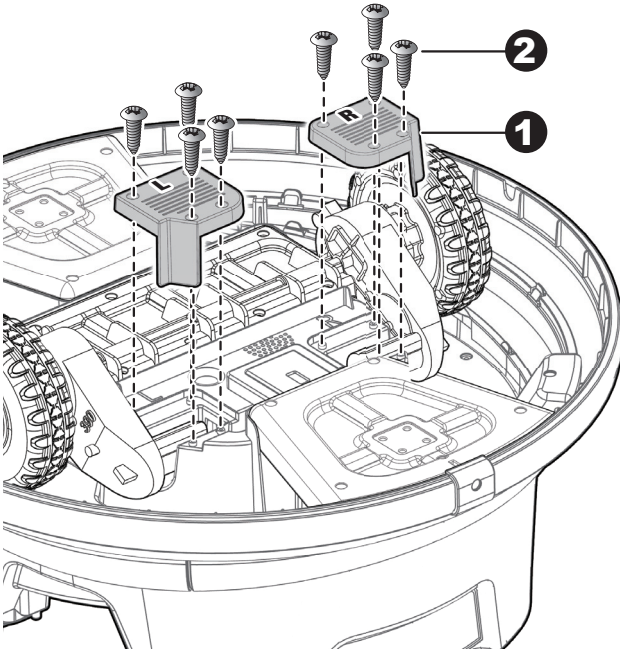


Screwdriver

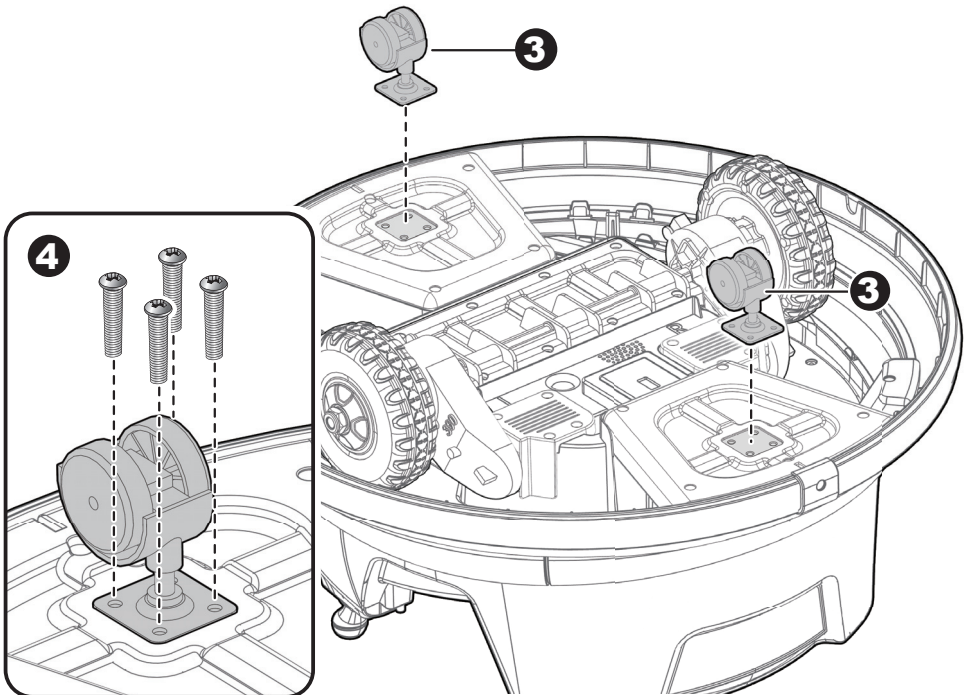


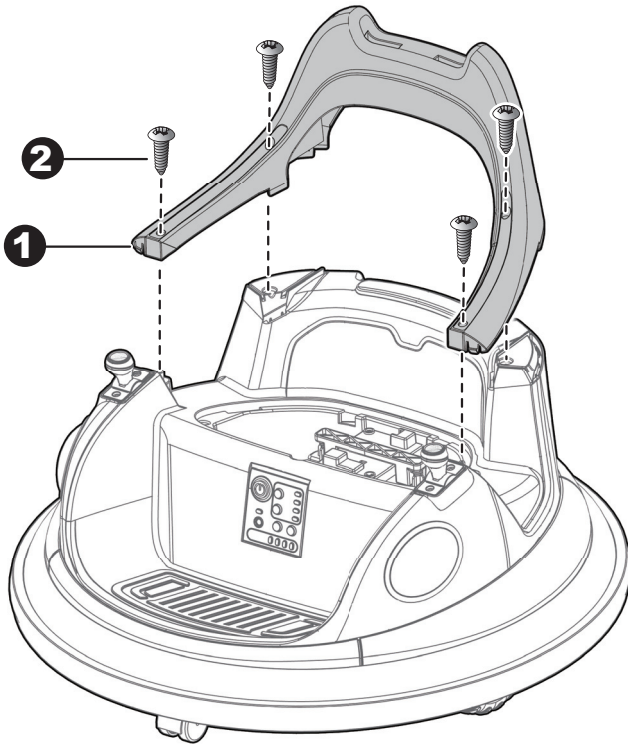
1. Turn the vehicle body downside up. Fit the driving wheel assembly to the vehicle body. Ensure the connector on each motor pass through the holes in the vehicle body.
2. Plug the both **White connectors** on the motor into the **White connectors** on the vehicle body, push firmly. Then hide the connectors into the hole in the vehicle body.
3. Insert eight $\text{Ø}4 \times 12$ screws and tighten with a screwdriver.

Assembly 6



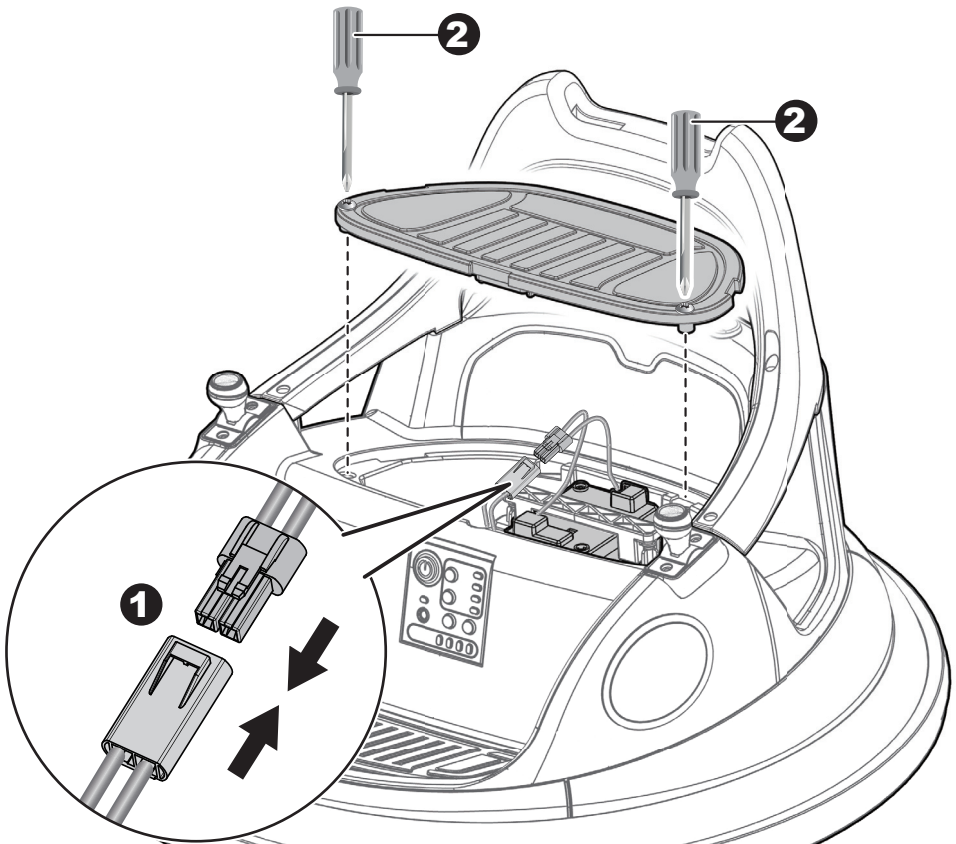
1. Fit the motor hoods to vehicle body (R to R, L to L)
2. Insert four $\varnothing 4 \times 12$ screws and tighten with a screwdriver on each motor hood.
3. Remove eight M5x25 machine screws from the bottom of the body with a screwdriver. Fit the universal wheels to the vehicle body.
4. Insert and tighten four M5x25 machine screws with a screwdriver on each universal wheel.



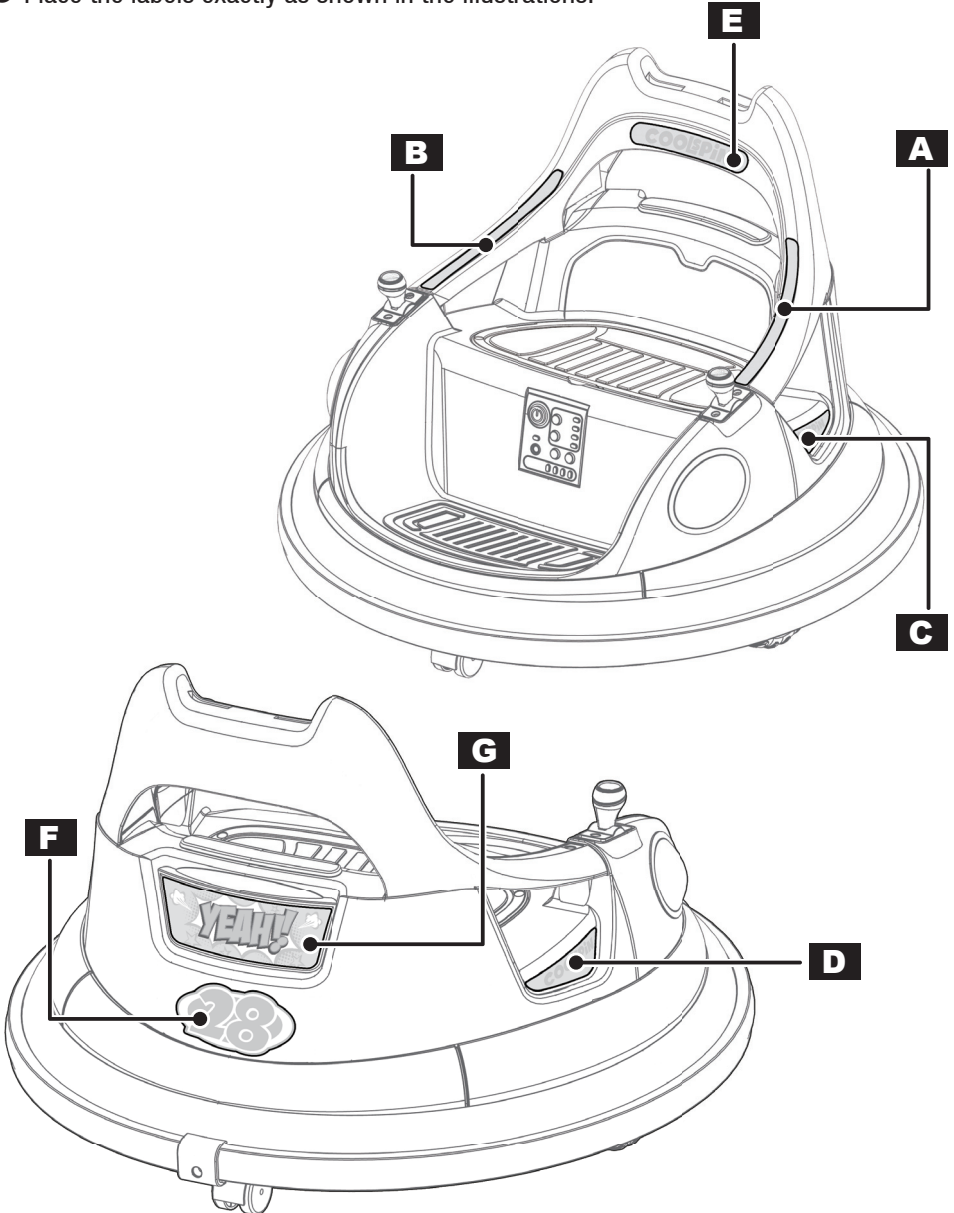


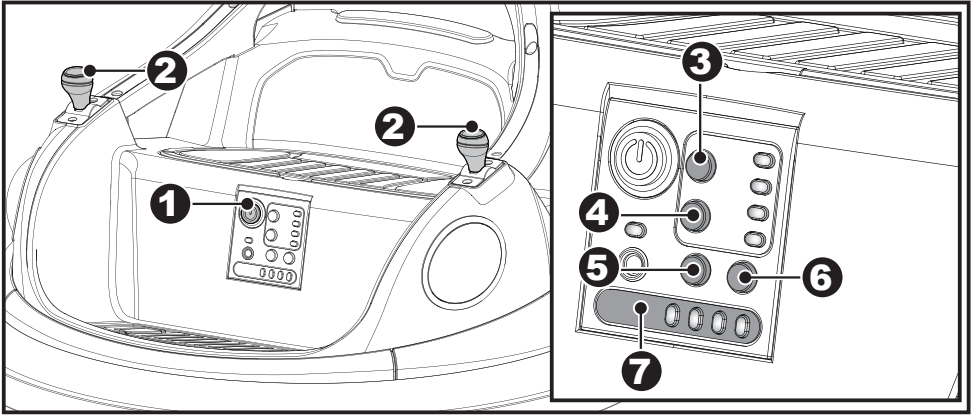
1. Turn the vehicle body upright. Fit the back rest to the vehicle body.
2. Insert four $\varnothing 4 \times 12$ screws and tighten with a screwdriver.

- Use a screwdriver to loosen the two screws on the top of the seat and remove the seat.
1. Plug the **Red connector** on the vehicle body into the **Red connector** from the battery.
 2. Use a screwdriver to tighten the both screws on the top of the seat into the holes of the vehicle.



- Wash your hands before applying the labels.
- Before applying the labels, wipe the surface of the vehicle with a clean, dry cloth to remove any dust or oils.
- Place the labels exactly as shown in the illustrations.

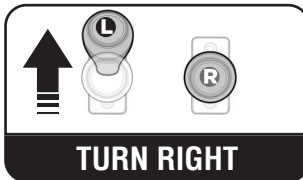




1. Power button: Turn the product on and off.

2. Left and Right joysticks:

Control the product to move forward, backward, turn left (circle) and right (circle).



3. RC/Joystick button: Operates the product control by remote control or joysticks.

4. High / Low speed button:

Operates the product to move forward in high speed and low speed.

5. Music button: Press for music playing.

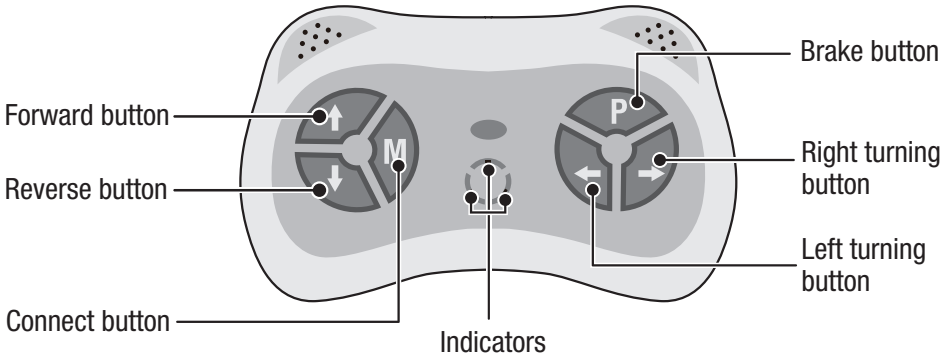
6. Lights button: Turn on and off the light bar on both sides of the body, this button can also switch the light mode of the light bar.

7. Battery indicators: Check the power remaining of the battery, If only one indicator remains, the battery needs charging.



WARNING:

ADULT OPERATING REQUIRED!



**The remote control has precedence over foot pedal operation.
(The foot pedal won't work while you operate the Remote Controller)**

1. Connect button (build connection)

Lift the battery compartment door on the back of the controller and insert two AAA (LR03) batteries. **NOTE: Batteries not included. Refer to the battery information on page 2.**

Press and hold the connect button for 3 seconds, the indicators flashes, mean that the remote controller is in the connected state. Then power on the product:

- The indicators goes to long bright, means the connection successful.
- If indicator no response, means the connection failed. Turn off the remote controller (by removing the batteries) and the product. And try again.

2. Brake button

Press the button to stop the vehicle, press it again to release the brake.

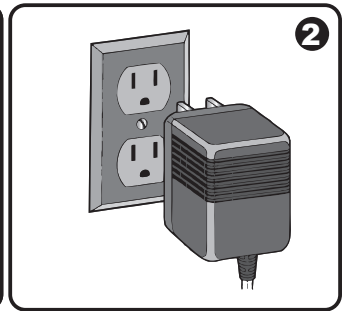
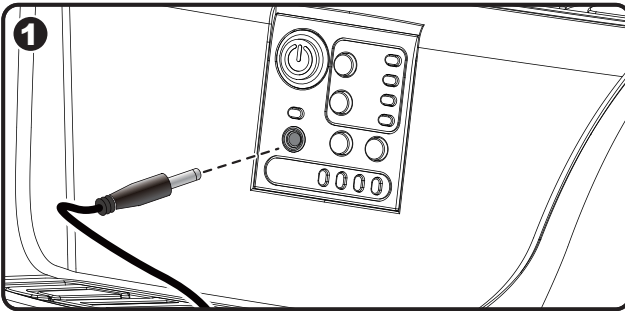
NOTE:

- Leave the remote controller idling for about 10 seconds, it will shut down automatically.
- After you replacing the batteries of the remote controller, please rebuild the connection. (step 1)

WARNING!

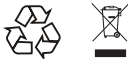
- **ONLY an adult is allowed charge and recharge the battery!**
- **This product with Charging Protection: when charging, all functions will be cut off.**

- The POWER SWITCH must be turned in OFF position when charging.
- Before the first use, you should charge the battery for 4-6 hours. Do not recharge the battery for more than 10 hours to avoid overheating the charger.
- When the vehicle begins to run slowly, recharge the battery.
- After each use or once a month minimum recharge time as 8 to 12 hours, less than 20 hours at most.
- Use the only rechargeable battery and charger supplied with your vehicle. NEVER substitute the battery or the charger with another brand. Using another battery or charger may cause a fire or explosion.
- Do not use the battery or charger for any other product.
- The battery indicators will tell you how much power is remaining in the battery. Make sure the product is stop! If there is only one indicator remains, recharge the battery.



1. Plug the charger port into the input socket (the socket below the seat).
2. Plug the charger plug into a wall outlet. The battery will begin charging.

Battery Disposal



The battery will eventually lose the ability to hold a charge. Depending on the amount of use, and varying conditions, the battery should operate for one to three years.

Important! Recycle the dead battery responsibly. The battery contains lead acid (electrolyte) and must be disposed of properly and legally. It is illegal in most areas to incinerate lead acid batteries or dispose of them in landfills. Take it to a federal or state-approved lead acid battery recycler, such as local automotive battery retailer. Do not throw the battery away with your regular household waste!

Problem	Possible Cause	Solution
Vehicle does not run	Battery low on power	Recharge battery.
	Thermal fuse has tripped	Reset fuse, see <Fuse>
	Battery connector or wires are loose	Check that the battery connectors are firmly plugged into each other. If wires are loose around the motor contact your distributor please.
	Battery is dead	Replace battery, contact your distributor please.
	Electrical system is damaged	Contact your distributor please.
	Motor is damaged	Contact your distributor please.
Vehicle does not run very long	Battery is under charged	Check that the battery connectors are firmly plugged into each other when recharging
	Battery is old	Replace battery, contact your distributor please.
Vehicle runs sluggishly	Battery low on power	Recharge battery, contact your distributor please.
	Battery is old	Replace battery, contact your distributor please.
	Vehicle is overload	Reduce weight on vehicle.
	Vehicle is being used in harsh conditions	Avoid using vehicle in harsh conditions, see <User Notice>.
Vehicle needs a push to go forward	Poor contact of wires or connectors	Check that the battery connectors are firmly plugged into each other. If wires are loose around the motor, contact your distributor please.
	“Dead Spot” on motor	A dead spot means the electric power is not being delivered to the terminal connection and the vehicle needs repair. Contact your distributor please.
Difficult shifting from forward to reverse or vice-versa	Attempting to shift while the vehicle is motion	Completely stop the vehicle and shift, see <Use Your Ride-On>
Loud grinding or clicking noises coming from motor or gear box	Motor or gears are damaged	Contact your distributor please.
Battery will not recharge	Battery connector or adapter connector is loose	Check that the battery connectors are firmly plugged into each other.
	Charger not plugged in	Check that the battery charger is plugged into a working wall outlet.
	Charger is not working	Contact your distributor please.
Charger feels warm when recharging	This is normal and not a cause for concern	

Completely read through this manual and the troubleshooting guide table before calling. If you still need help resolving the problem **Contact your distributor please.**

- It is parents' responsibility to check main parts of the toy before using, Must regularly examine for potential hazard, such as the battery, charge, cable or cord, plug, screws are fastening enclosure of other parts and that in the event of such damage, the toy must not be used until that damage had been properly removed.
- Park the vehicle indoors or cover it with a tarp to protect it from wet weather.
- Recharge the battery after each use. Only an adult can handle the battery. Recharge the battery at least once a month when the vehicle raider is not being used.
- Do not wash the vehicle with a hose. Do not wash the vehicle with soap and water. Do not drive the vehicle in rainy or snowy weather. Water will damage the motor, electric system and battery.
- Clean the vehicle with a soft, dry cloth. To restore shine to plastic parts, use a non-wax furniture polish. Do not use car wax. Do not use abrasive cleaners.
- When not using, all the electrical source should be turn off. Turn off the power switch and disconnect the battery connection.

Fuse

The battery features a thermal fuse with a reset fuse that will automatically trip and cut all power to the vehicle if the motor, electric system or battery is overloaded. The fuse will reset and power will be restored after the unit is turned OFF for 20 seconds and then turned ON again. If the thermal fuse trips repeatedly during normal use, the vehicle may need repair. **Contact your distributor please.**

To avoid losing power, follow these guidelines:

- Do not overload the vehicle.
- Do not tow anything behind the vehicle.
- Do not drive up steep slopes.
- Do not drive into fixed objects, which may cause the wheels to spin, causing the motor to overheat.
- Do not drive in very hot weather, components may overheat.
- Do not allow water or other liquids to come in contact with the battery or other electric components.
- Do not tamper with the electric system. Doing so may create a short, causing the fuse to trip.

**Our products are suitable for
ASTM F963; GB6675; EN71 and EN62115 standard.**