

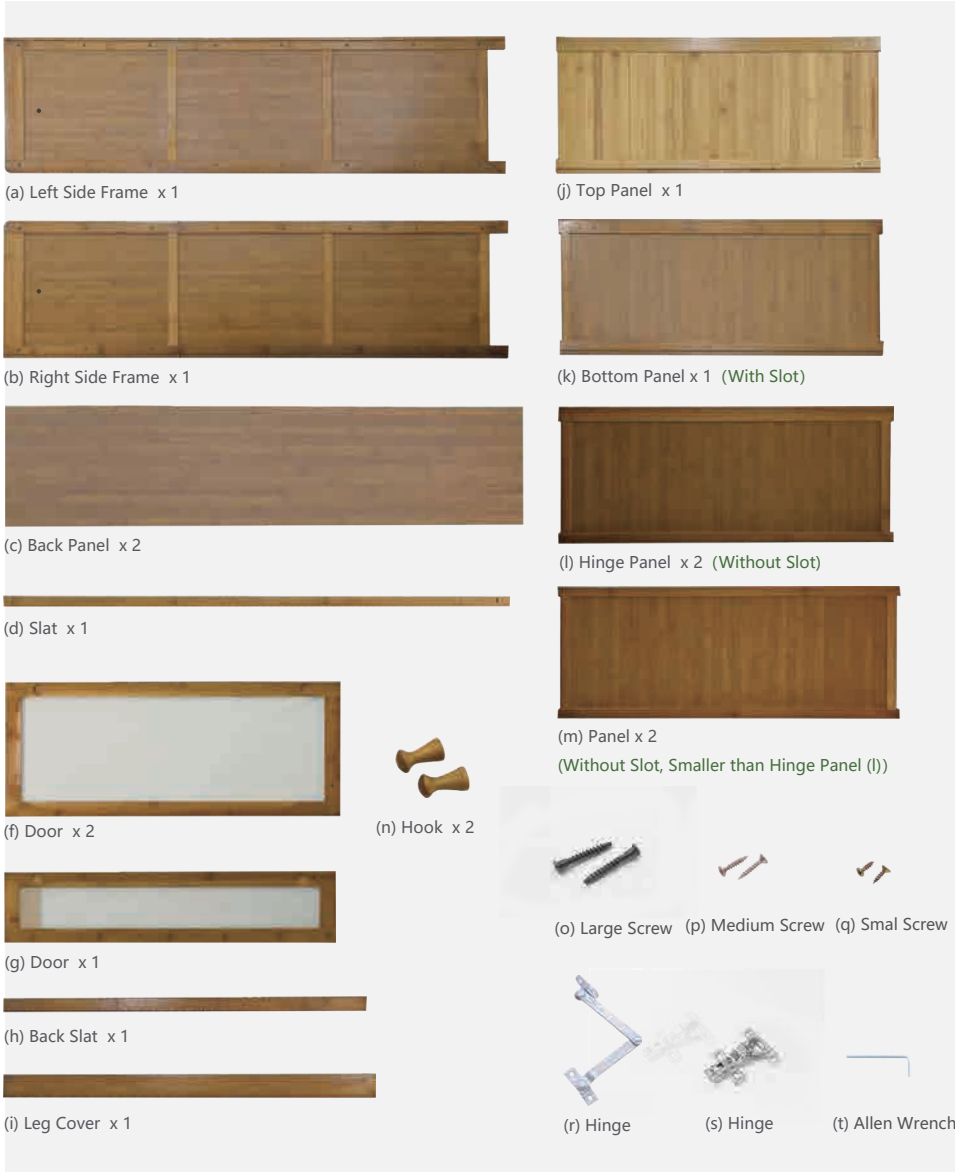
USER GUIDE

SHOE RACK

Natural / Stylish / Unique



HARDWARE



⚠️ DOOR AND HINGE ASSEMBLY



Secure Doors (f) and Hinges (s) with Small Screws (q).



Secure Door (g) and Hinges (s) with Small Screws (q).

⚠️ ATTENTION

- ① Please always read and follow the assembly, maintenance and operating instruction.
- ② Do not discard any of the packaging until you have checked that you have all the parts and pack of fittings.
- ③ Keep children away during assembly. This item contains small parts which can be swallowed by children.
- ④ Wipe frames with water gently, do not use bleach, acid, or other solvents.
- ⑤ Check all hardwares before assembly. Incorrect parts used may lead to damage.



Scan the QR code to view the assembly video.



FINISHED PRODUCT

ASSEMBLY INSTRUCTIONS

The assembly instructions may vary depending on the number of tiers.



The Groove of the Bottom Panel (k) Faces Up

① Secure Left Side Frame (a) and Bottom Panel (k) with Large Screws (o). Groove on both panels has to be aligned.



② Position and secure Hinge Panels (l) with Large Screws (o).
© 2020-2023 by Pundarika LLC - MoNiBloom.com



③ Position and secure Panels (m) with Large Screws (o).



④ Secure Right Side Frame (b) with Large Screws (o).



⑤ Position and secure Leg Cover (i) with Medium Screws (p).



⑥ Turn over the shelf, position Slat (e), secure from the Bottom Panel (k) with Large Screws.



⑦ Position Back Panel (c) and Slat (d), insert them along the groove.



⑧ Position Back Panel (c), insert along the groove.



⑨ Position and secure Top Panel (j) and Back Slat (h) with Large Screws (o).



⑩ Secure Doors (f, g) and Hinge Panel (l) with Small Screws (q).



⑪ Secure Hinges (r) and Side Frame (a, b) with Small Screws (q). Close the door.



⑫ Position and secure Hooks (n) with Large Screws (o).