








Computer desk A11 Installation diagram

Please give 5 points for satisfaction

If there are missing or damaged parts, please contact us and we will make a parts replacement for you.

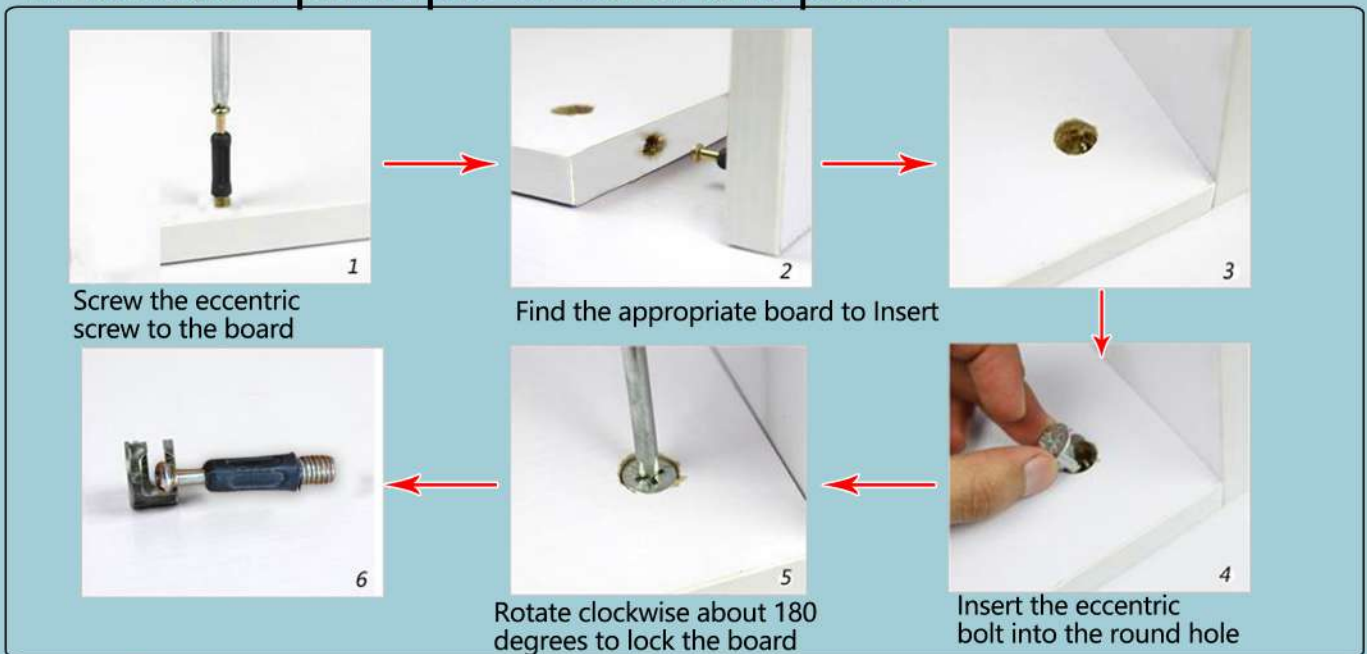
Matches the description ★ ★ ★ ★ ★ 5
 The service attitude of the seller ★ ★ ★ ★ ★ 5
 Speed of delivery ★ ★ ★ ★ ★ 5

Note: The product pictures within the assembly instructions are different from the actual product size, but their assembly process and steps are the same.

								
Eccentric screw	Eccentric bolts	5CM pointed screws	3.5 CM self tapping screw	4.5 CM flat head screws	Little Nail	2.5 CM flat head screws	Foot pads	Metal pins
A*16	B*16	C*4	D*39	E*2	F*10	G*4	H*2	I *6

Warm Tip: when the installation screw seven points tight, and so all completed before tightening

Installation principle of eccentric parts:



Installation steps

