

Assembly Instructions

RGB ILLUMINATIONS BENCH SEAT

ITEM # HO76-NT20003-1

PARTS LISTING
EACH RGB ILLUMINATIONS BENCH

Contains:

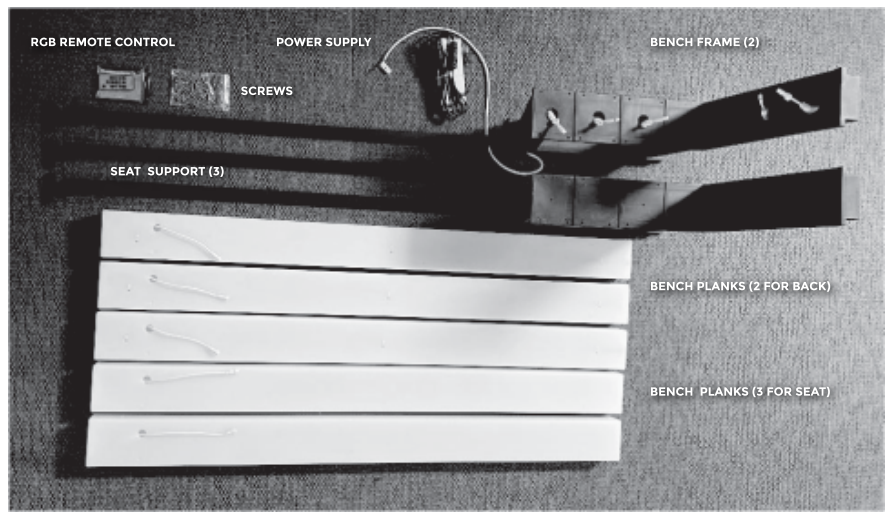
- (5) Bench Slats
- (2) Bench Frames
- (3) Electrical Raceways
- (1) Remote Control Unit
- (1) RGB Control Unit
- (1) Power Supply
- All Necessary Screws



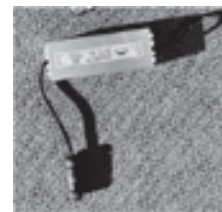
READ CAUTIONS AND WARNINGS SECTION OF INSTRUCTIONS BEFORE STARTING ASSEMBLY.

CARE INSTRUCTIONS:

To maintain this item's pristine condition, wipe product with a clean, soft, dry towel.



ASSEMBLED BENCH



POWER SUPPLY



SCREWS



RGB REMOTE CONTROL

ASSEMBLY:

NOTE: Construction of this item can be done with a handheld Phillips Screwdriver, but a Cordless Drill with an extended Phillips Screwdriver bit is recommended. You will also need a ruler or tape measure.

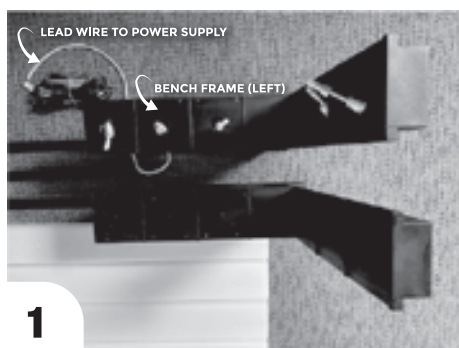
Carefully remove all items from boxes and remove any packing materials. It is best to assemble this item in the general location you intend to display it, as it can be awkward to navigate through doorways and halls.

Arrange the bench parts so that similar parts are grouped together. Separate the 2 different size screws in cups for easy identification.

1) **IMPORTANT!** You must physically connect the lead wires from the primary wire found in the LEFT Bench frame with coaxial plugs extending out of the holes and the lead wires extending out of a hole near the base of the part. **MAKE CERTAIN THE POWER SUPPLY IS UNPLUGGED!**

2) **IMPORTANT!** BEFORE CONNECTING WIRES, UNSCREW THE CONNECTION CAP AND SLIDE IT ONTO THE LEAD WIRE.

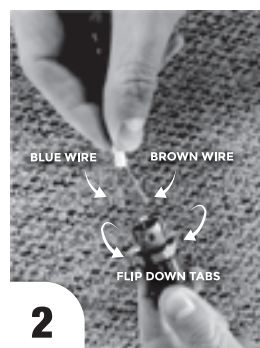
The lead wire has two (2) wires (Brown & Blue). The connection attached to the power supply will receive these wires in color coordinated receptacles. Flip the tabs down and insert the wires into the color matched receptacle and close the tabs. Then slide the cap down onto the connection and screw on until finger tight. The connection is now made and water tight.



1



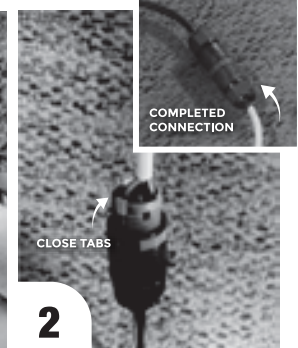
2



2



2



2

Note: Excessive movement of the Power Supply can result in the disconnection of wires inside the connection housing. Apply Electrical tape to the Cap and Lead Wire to guarantee a secure connection.

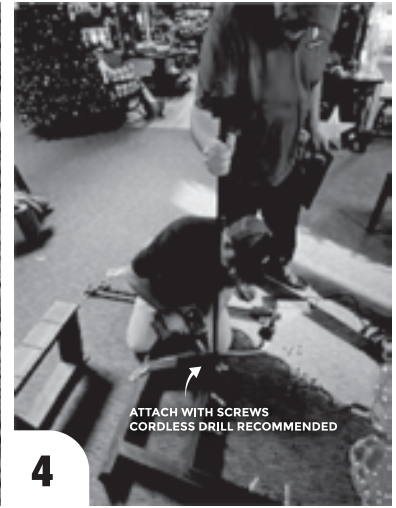
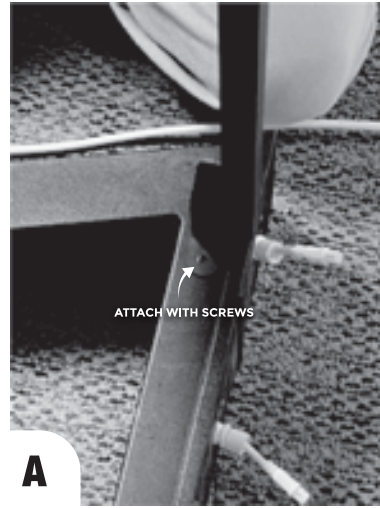
Assembly Instructions

ITEM # HO76-NT20003-1

RGB ILLUMINATIONS BENCH SEAT

ASSEMBLY continued:

- 3) Arrange the two (2) Bench Frame pieces roughly 5 feet apart in the general area where you intend to display the bench.
- 4) Locate one seating area support beam and line it up with the coaxial plug nearest the front of the bench. Line it up as shown in figure A and attach with the provided short screws (2) to the left frame as shown. Lay the frame flat on the floor to make this step easier.
****Make sure these connections are tight before proceeding****
- 5) Repeat the process in Step 4 for the center support and rear support.
****Make sure these connections are tight before proceeding****
- 6) When all three (3) supports are securely attached to the left frame, lift the frame and supports upright and lay the supports on the right frame base. Roughly line them up to match the left side.



- 7) Attach the supports to the frame with the short screws as you did on the left side. It could be more difficult to access the screws, so be careful not to screw at an angle or strip out the screws. (If you do strip out the screw so that it does not maintain a solid connection, back it out and attach at a different point at least 1/8" from the original hole.)
- 8) Attach all three (3) supports. You should now have a free standing frame with coaxial connections extending out on the left side.

FINAL STEPS NEXT!

Assembly Instructions

ITEM # HO76-NT20003-1

RGB ILLUMINATIONS BENCH SEAT

ASSEMBLY continued:

9) Locate the three (3) seating planks. They will be slightly wider than the two (2) backer planks. Arrange them to align with the coaxial holes and support beams. Attach each coaxial as shown and tuck the connection and excess wire into the frame base.

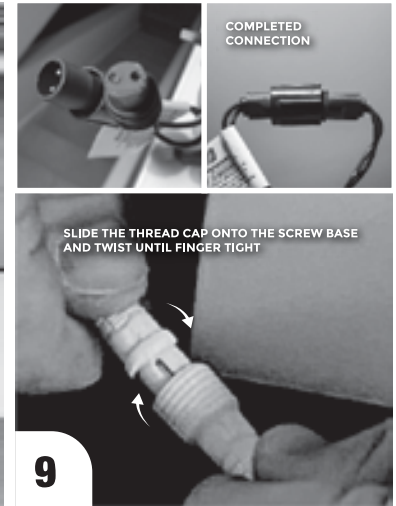
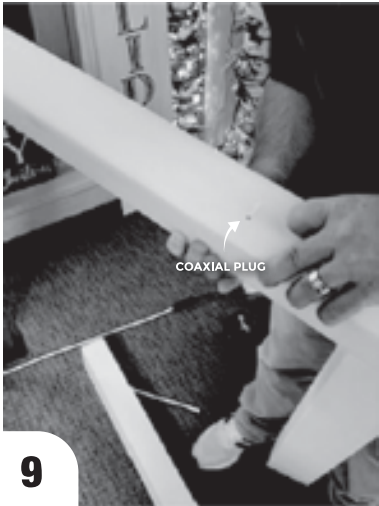
10) With all three (3) planks aligned, gently lean the bench back to access the attachment points.

11) Measure the first plank so that it is approximately 2" beyond the frame on either side and slightly hanging over the frame at the front. Attach with the provided long screws. Two (2) screws per plank per side.

****Make sure these connections are tight before proceeding****

12) Repeat this process for the additional seat planks and repeat again on the opposite side. NOTE: Make sure you leave a small gap between the planks. It should be consistent from one plank to the next.

****Make sure these connections are tight before proceeding****



7) Lean the bench back to the upright position to complete the assembly.

Let's finish it up!

Assembly Instructions

ITEM # HO76-NT20003-1

RGB ILLUMINATIONS BENCH SEAT

ASSEMBLY continued:

13) Locate the two (2) back planks. Arrange them to align with the coaxial holes and backrest frame. Attach each coaxial as before.

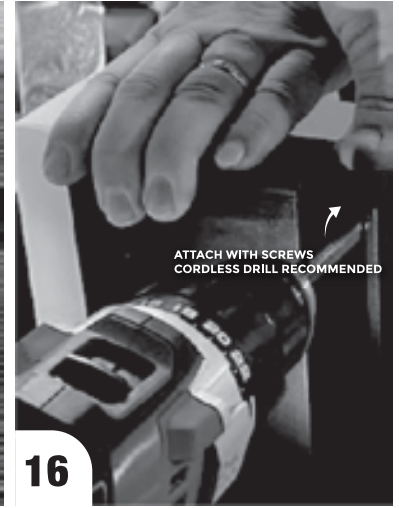
14) With the two (2) planks attached to the cable, align the top plank with the top of the backrest frame.

15) Measure the first plank so that it is approximately 2" beyond the frame on either side and slightly hanging over the frame at the front. Attach with the provided long screws. Two (2) screws per plank per side. (NOTE: this may require assistance from a second person)

****Make sure these connections are tight before proceeding****

16) Create a gap between backrest planks similar to the seating planks and repeat this process for the remaining backrest plank and repeat again on the opposite side.

****Make sure these connections are tight before proceeding****



The Bench is now completely assembled! Place it wherever you like and attach to a UL approved extension cord and enjoy!





- DO NOT** lift bench by the planks. Lift with two (2) people by the frame base only. Secure the power supply when moving.
 - DO NOT** attempt to sit on the bench prior to assembly completion.
 - DO** grasp electrical plugs and remove it from the receptacle or outlet device. Never Unplug by pulling on the cord.
 - DO NOT** remove tape from plug hubs; this is for your protection and to insure that the plugs maintain a firm connection.
 - DO NOT** attempt to disassemble any of the electrical components. If you are having a problem with the function of this piece you should contact a product specialist.
 - This product will provide years of reliable use if maintained and used properly.
- NOTE:** Full Remote Control instructions are included in the Remote Control pouch.

Thank you for your purchase and we hope you enjoy your Dynamic Illuminations Bench!