

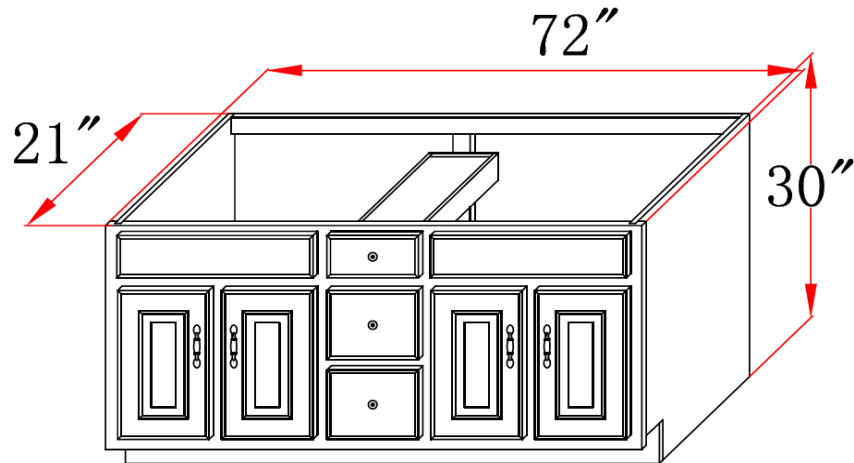
Four Door Three Drawer Vanity

Specifications

- MDF square panel doors & drawer fronts
- Full frame design
- 1/2" plywood sides
- Center mount ball bearing drawer glide system
- Concealed adjustable hinges
- Satin nickel hardware included
- Cam-lock connectors for fast & easy assembly
- Vanity top sold separately



Dimensions



Warranty & Compliances

Warranty	Limited 1 year warranty
California 93120	Compliant



Order Codes & Finishes/Colors

72"w x 21"d x 30"h

Type:

Job:

Order Code:

Approvals:

We reserve the right to make changes in materials, specifications & models at any time. We also reserve the right to discontinue product without notice or obligation.