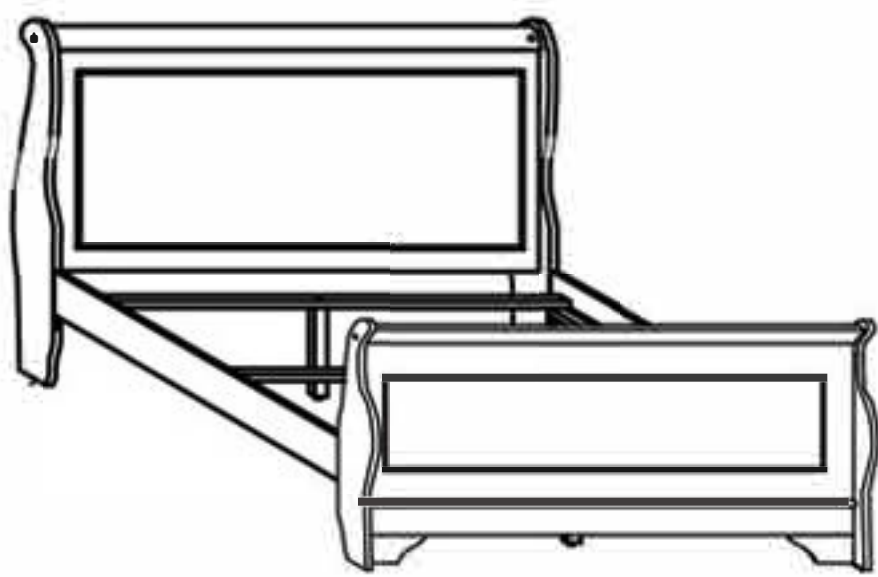


ASSEMBLY INSTRUCTION

Thank you for purchasing this product. Please take time to read and follow the instruction below. Check that you have all parts and hardware before assembly. Parts apparently missing are often found in the packing materials. If you do not have all the parts listed, have your dealer contact us and they will be sent to you immediately.



! It is recommended to install protective pads under all legs and supports to avoid damage or scratches when placing furniture on a wood floor or other hard surface, and to limit indentation and prevent discoloration if placing on carpet.

! Hardware may loosen over time. Periodically check to make sure all connections are tight. Re-tighten if necessary.

! Foundation/box spring required, sold separately.

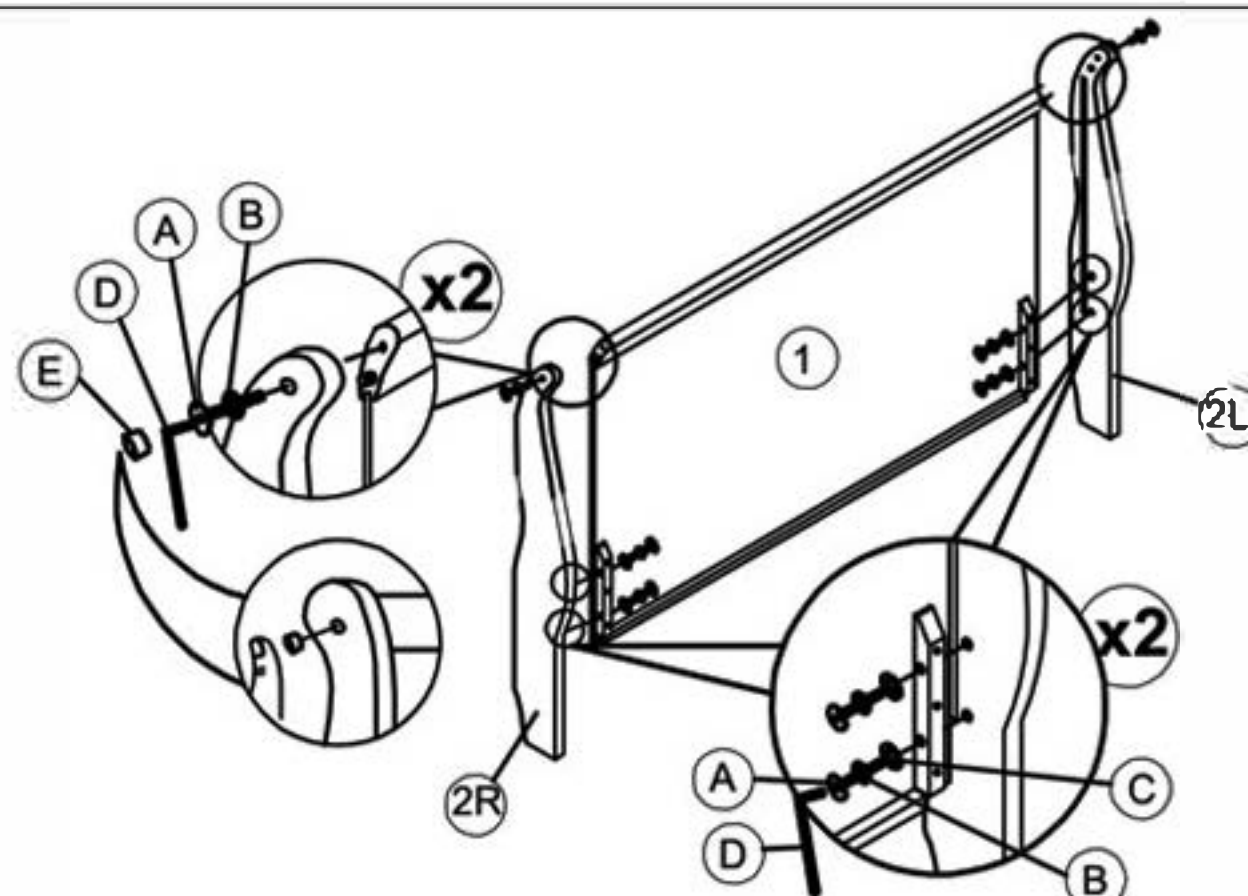
PARTS LIST			
NO/No	DRAWING/DESSIN	DESCRIPTION	QTY
1		HEADBOARD	1PC
2		HEADBOARD LEG - LEFT / RIGHT /	2PCS
3		FOOTBOARD	1PC
4		FOOTBOARD LEG - LEFT / RIGHT	2PCS

HARDWARE LIST			
NO/No	DRAWING	DESCRIPTION	QTY
A		JCBC BOLT 1/4"-20 x 1 3/8"	12PCS
B		SPRING WASHER 1/4" x 1/4" x 1/2" x 0.16"	12PCS
C		FLAT WASHER 1/4" x 1/4" x 3/4" x 0.04"	8PCS
D		ALLEN KEY	1PC
E		WOODEN BOTTON M15 X 9mm	4PCS

PARTS LIST			
NO/No	DRAWING	DESCRIPTION	QTY
5		SIDE RAIL	2PCS
6		SLATS	4PCS
7		CENTER LEG	4PCS

HARDWARE LIST			
NO/No	DRAWING	DESCRIPTION	QTY
F		SCREW 5/32" x 1 1/4" / VIS 5/32" x 1 1/4"	8PCS
G		JCBC BOLT 1/4"-20 x 1 7/8"	4PCS

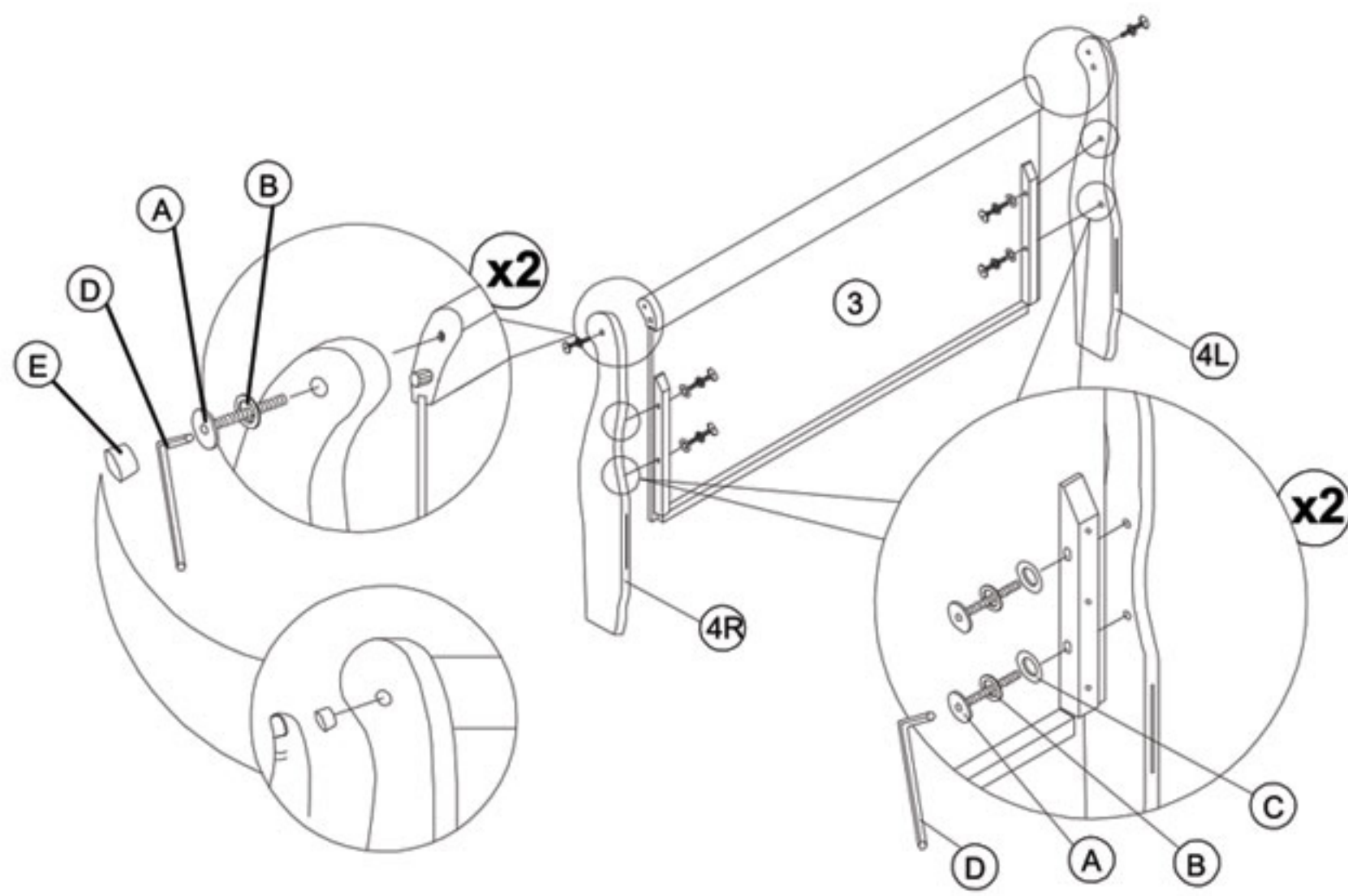
STEP 1



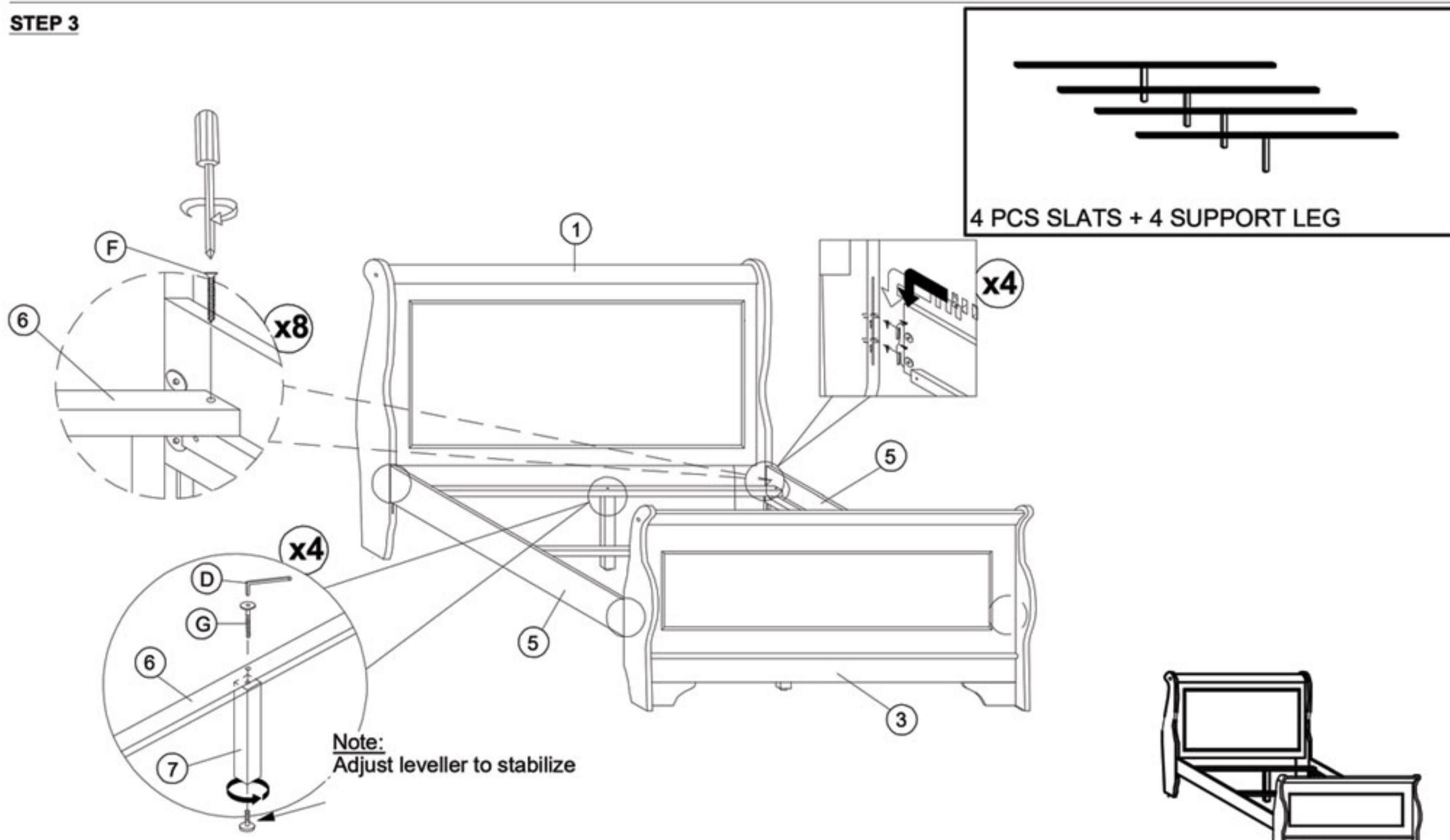
NOTE: YOU WILL ALSO NEED A PHILLIP SCREWDRIVER (NOT PROVIDED)

ASSEMBLY INSTRUCTION

STEP 2



STEP 3



* NOTE : YOU WILL NEED A PHILLIP SCREWDRIVER (NOT PROVIDED)

NOTE :

▲ DO NOT TIGHTEN BOLTS UNTIL COMPLETELY ASSEMBLED.

COMPLETED