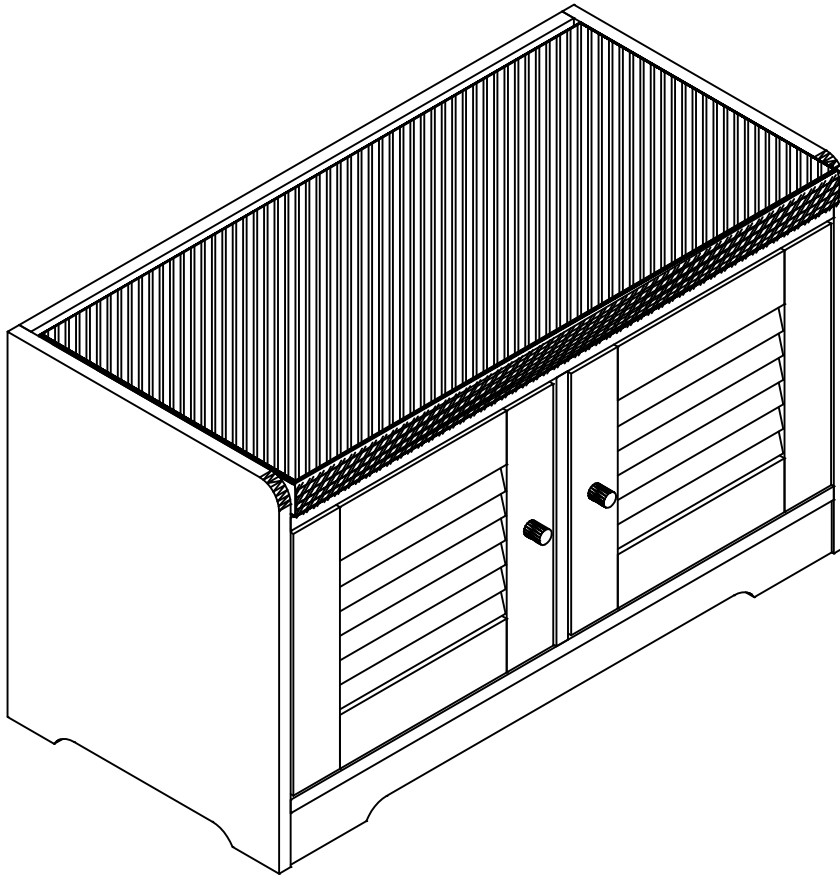
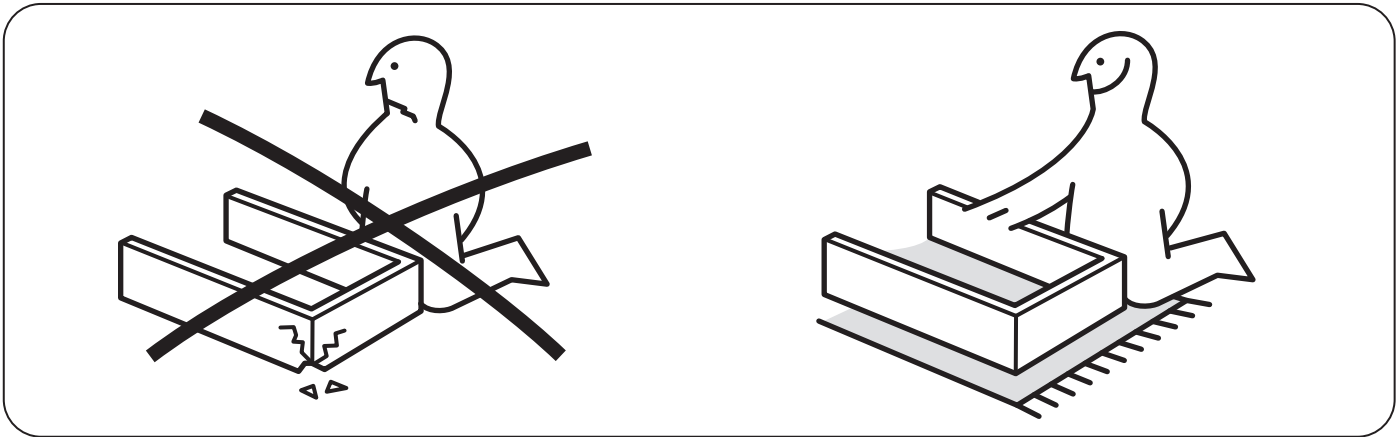
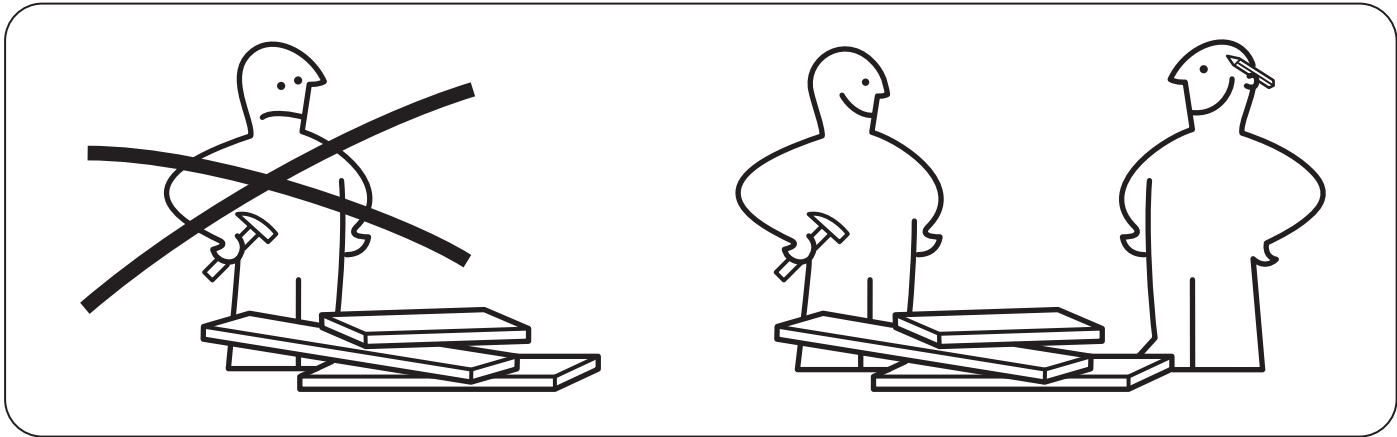


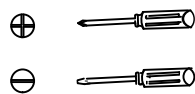
INSTALLATION & ASSEMBLY



Thanks for purchasing one of our products, please carefully read the assembly instructions before installation (Attention: Do not tighten the screws before all screws are in place).

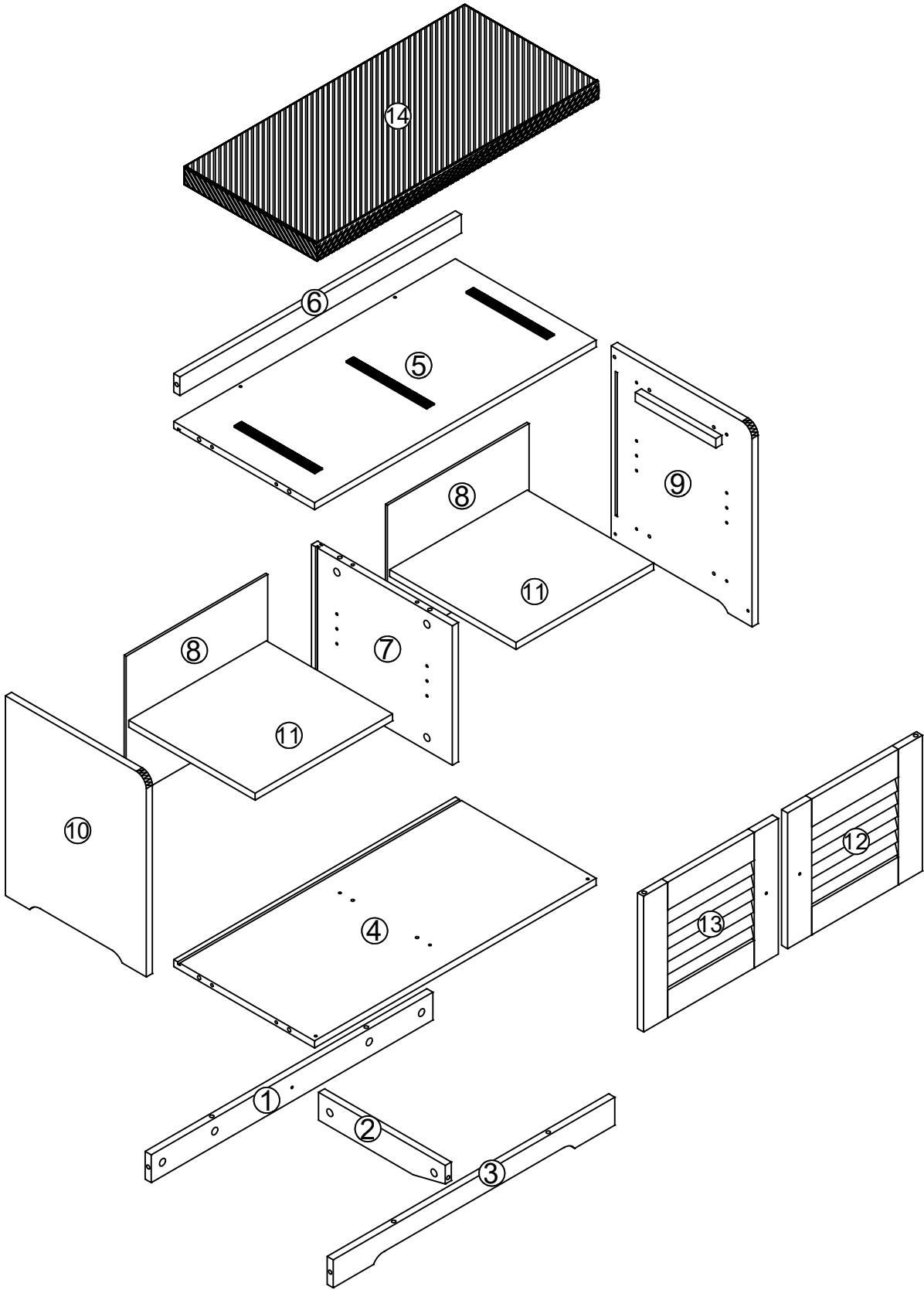


(Tools not provided)
 Flat Blade Screwdriver
 Phillips Head Screwdriver
 Wooden Hammer











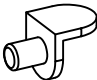


To Assemble the Unit
 Wooden Hammer

PAGE1
Exploded View



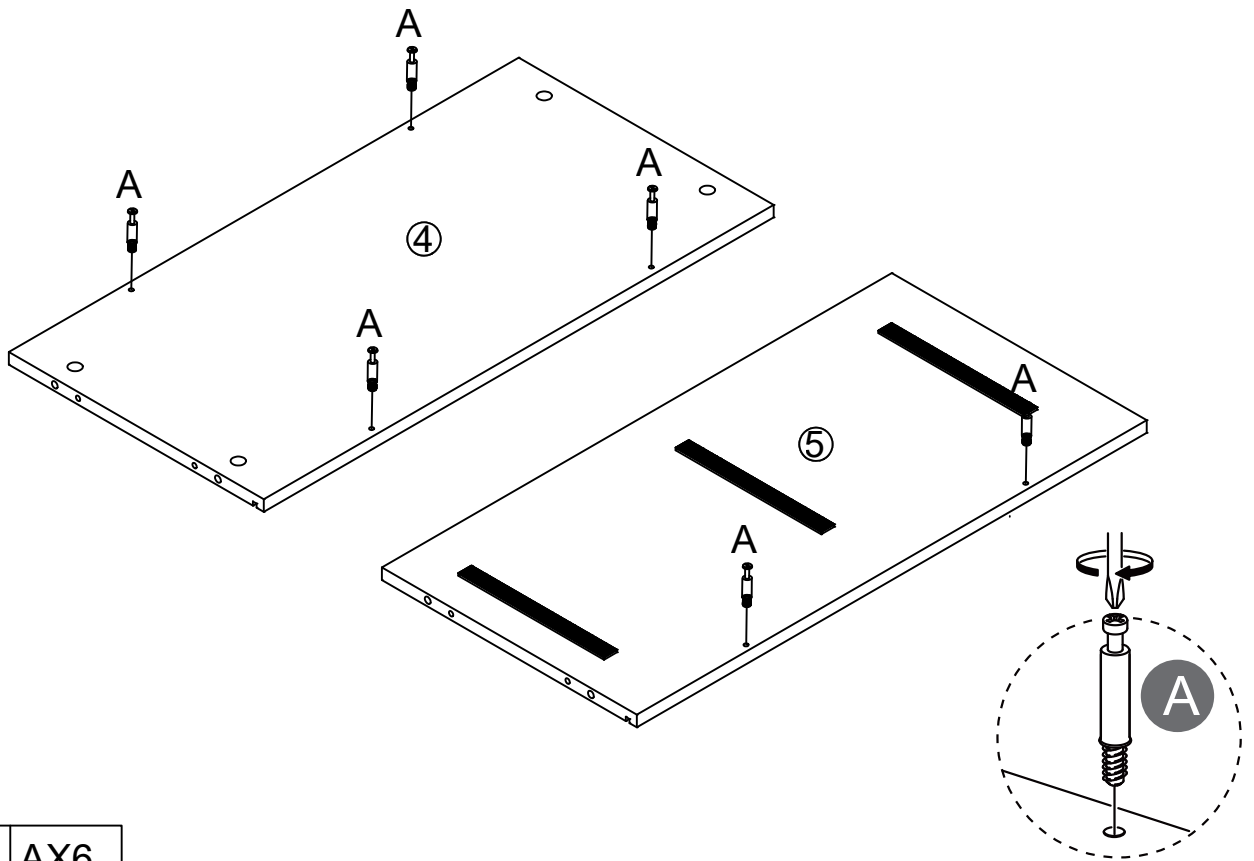
PAGE2
will require these parts

<p>A</p>  <p>26+2PCS</p>	<p>B</p>  <p>26+2PCS</p>	<p>C</p>  <p>M6X30MM</p> <p>12+2PCS</p>	<p>D</p>  <p>M3X16M</p> <p>4+1PCS</p>
<p>E</p>  <p>M3X10M</p> <p>4+1PCS</p>	<p>F</p>  <p>2PCS</p>	<p>G</p>  <p>4PCS</p>	<p>H</p>  <p>2PCS</p>
<p>I</p>  <p>M4X20M</p> <p>2PCS</p>	<p>J</p>  <p>(3*16MM)</p> <p>8PCS</p>	<p>K</p>  <p>8PCS</p>	

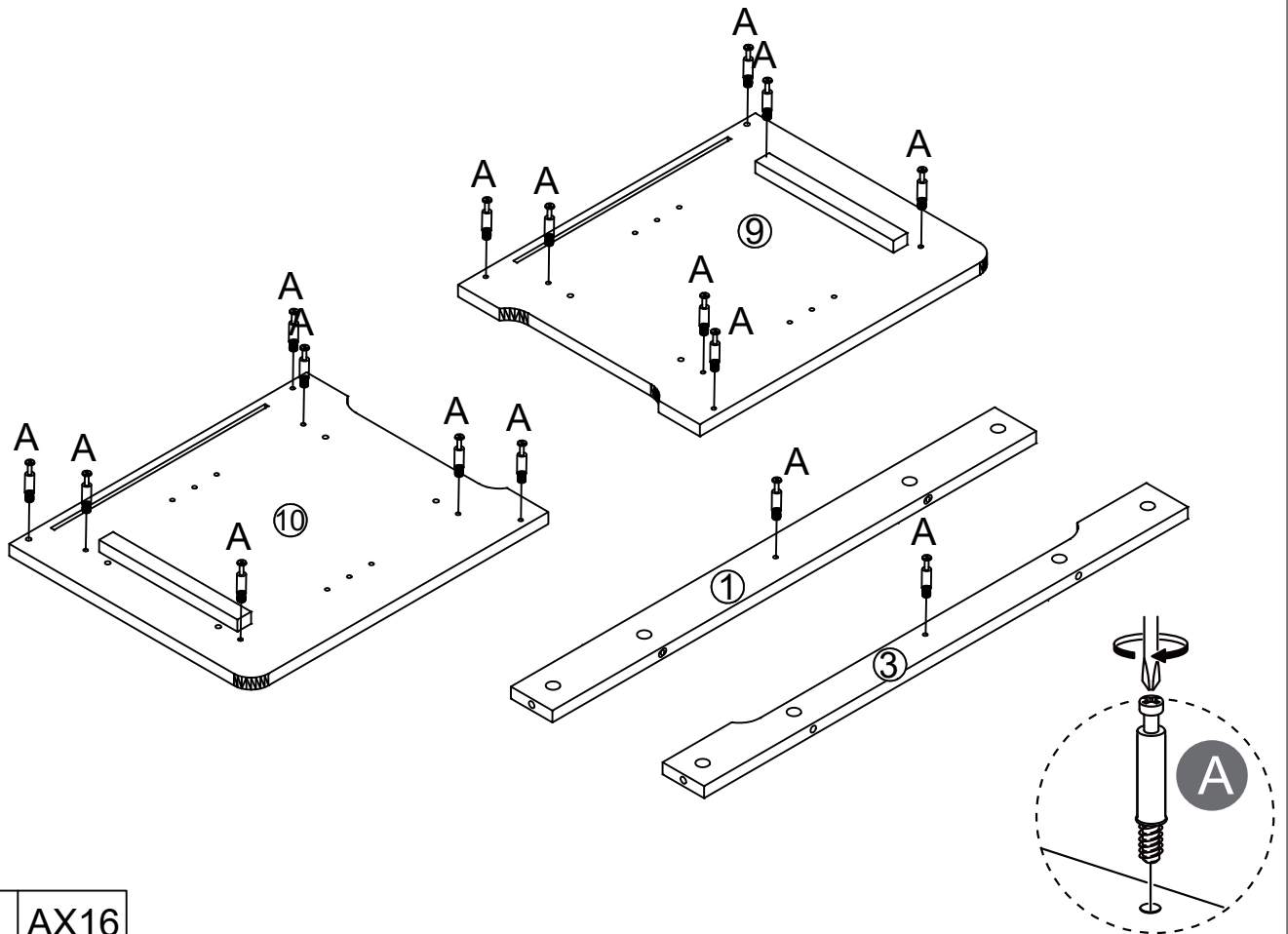
PAEG3

will require these parts

STEP1



AX6

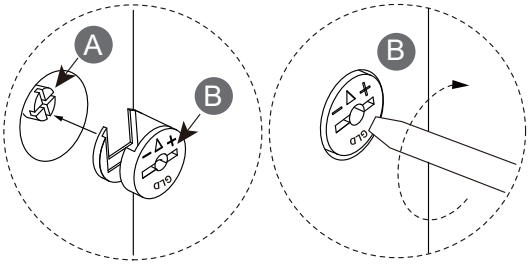


AX16

PAEG4

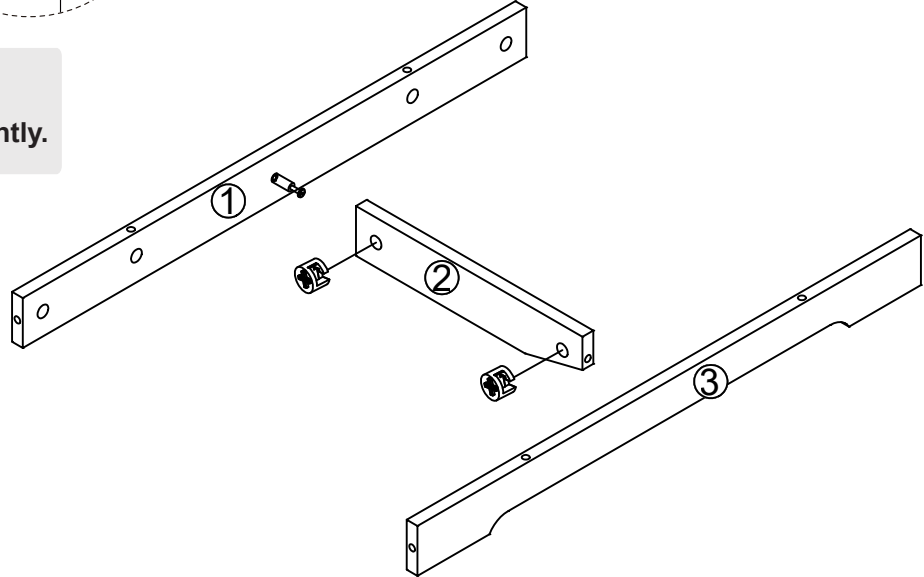
will require these parts

STEP2

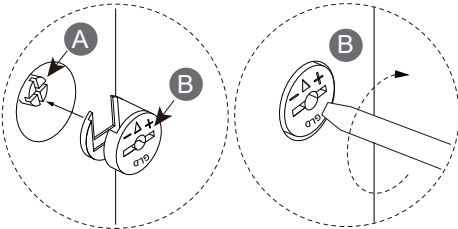


Attention:

Put **B** into the hole and turn **B** clockwise to lock **A** tightly.

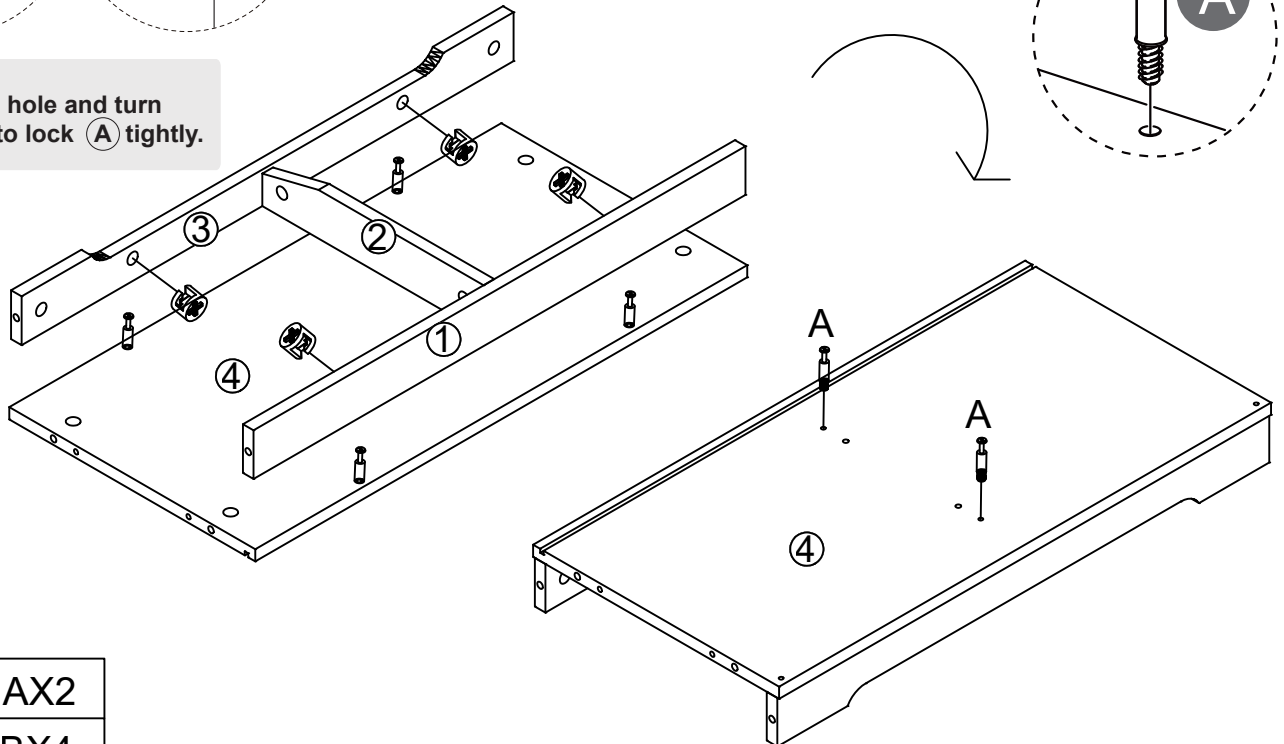


BX2



Attention:

Put **B** into the hole and turn **B** clockwise to lock **A** tightly.



AX2

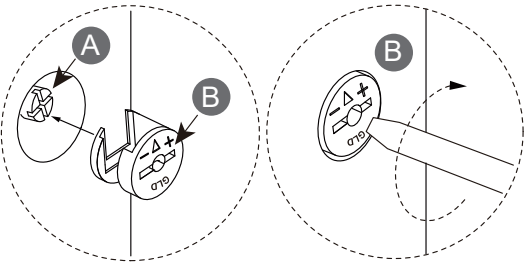


BX4

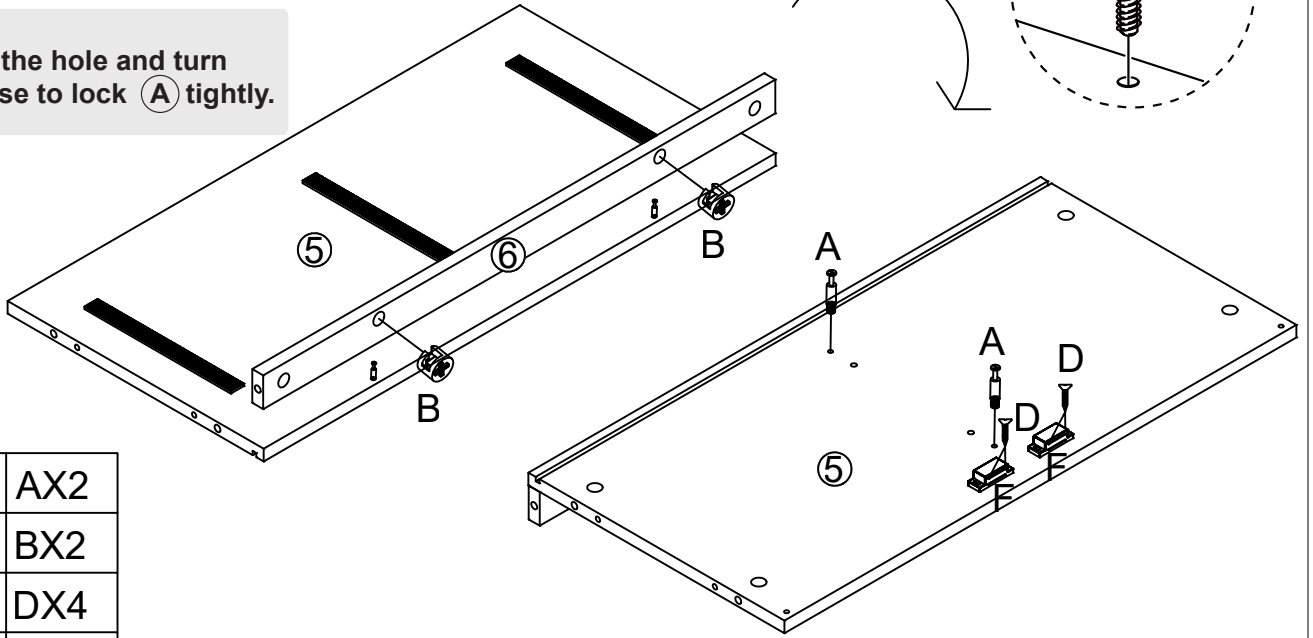
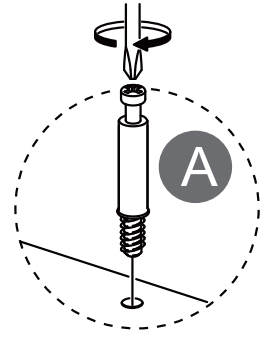
PAEG5

will require these parts

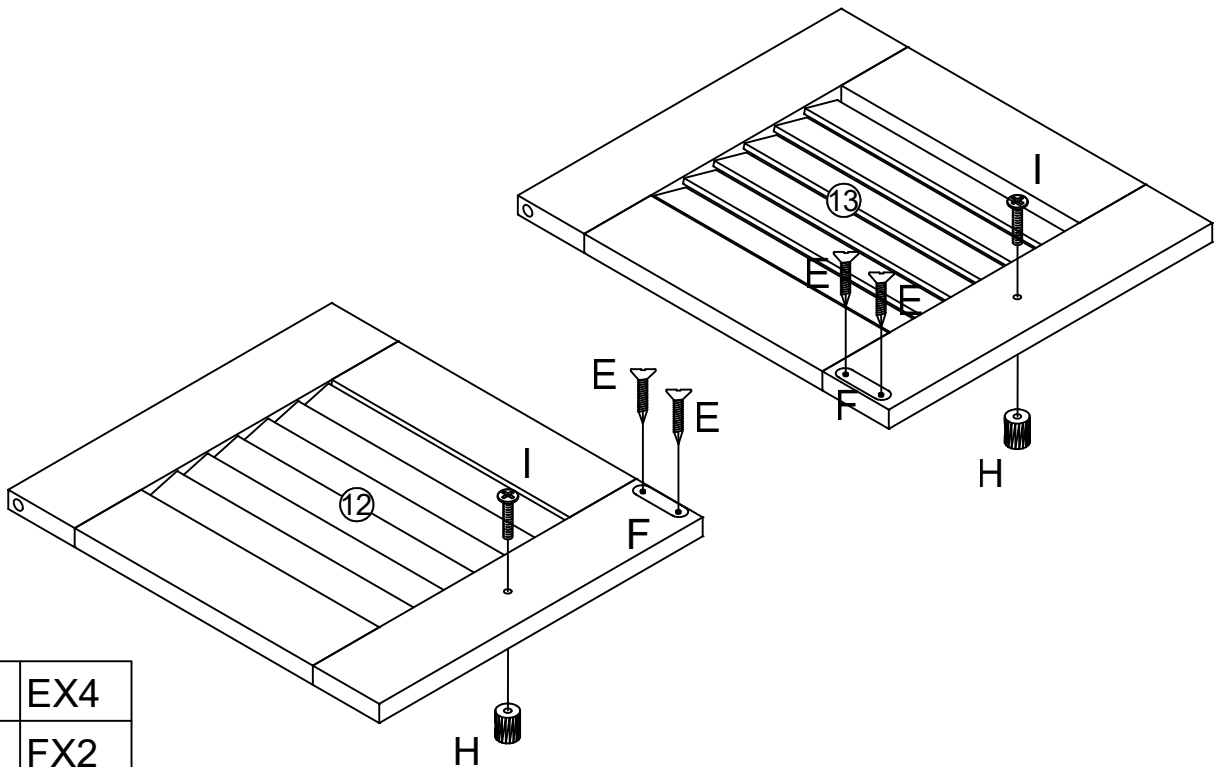
STEP3



Attention:
Put **(B)** into the hole and turn **(B)** clockwise to lock **(A)** tightly.



	AX2
	BX2
	DX4
	FX2

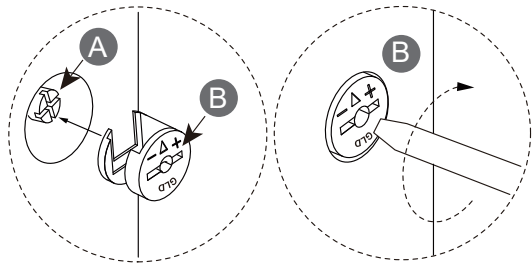


	EX4
	FX2
	HX2
	IX2

PAEG6

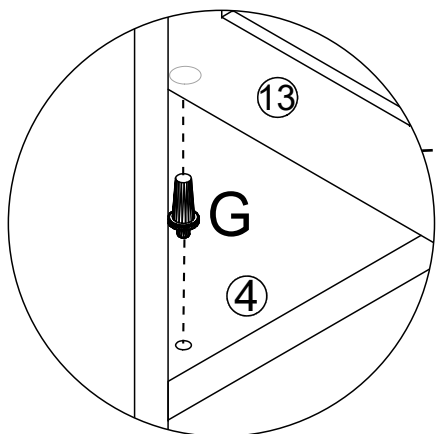
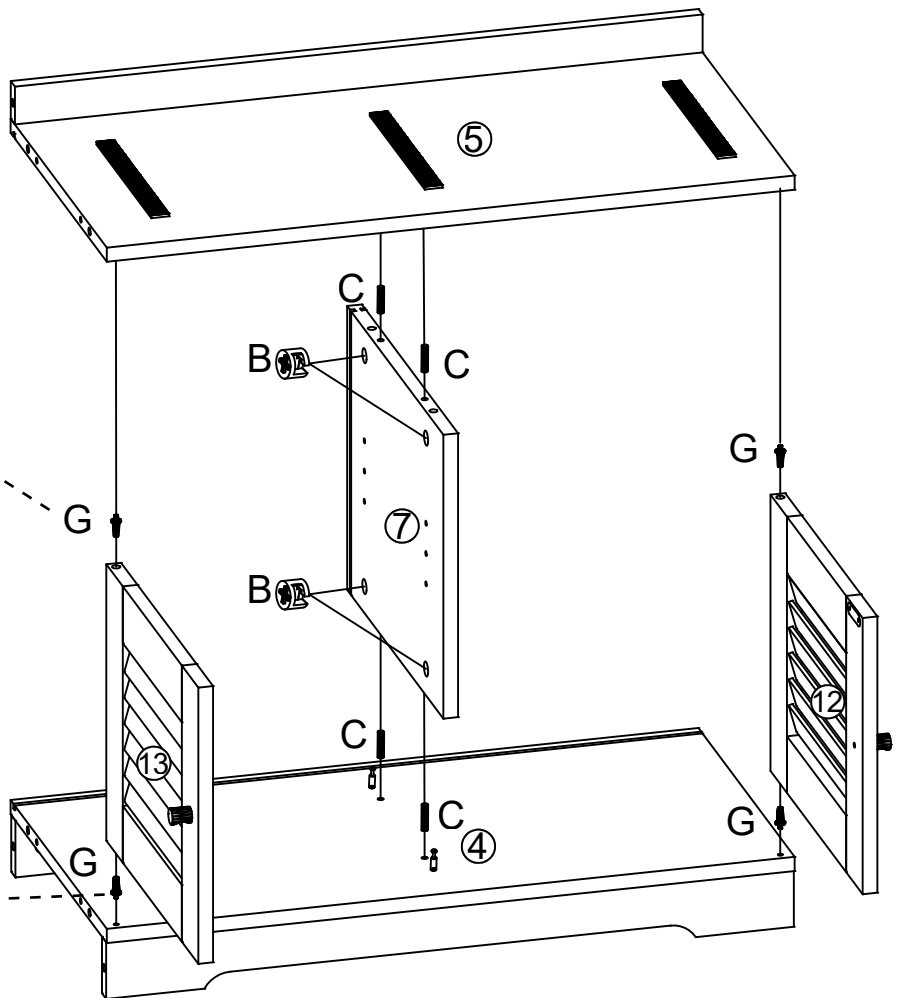
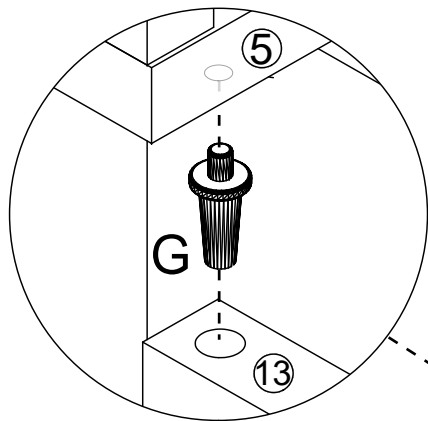
will require these parts




STEP4



Attention:

Put **(B)** into the hole and turn **(B)** clockwise to lock **(A)** tightly.

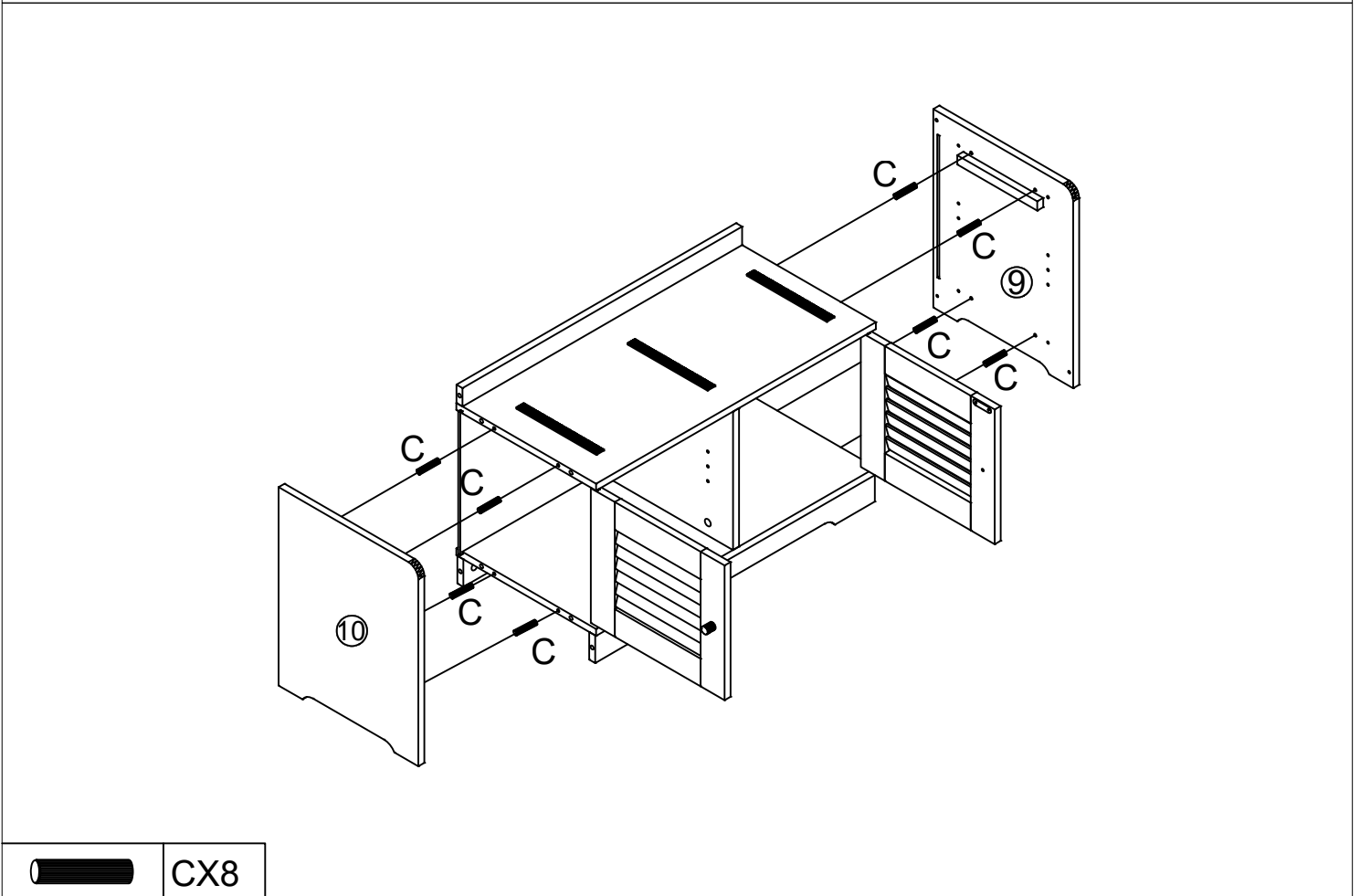
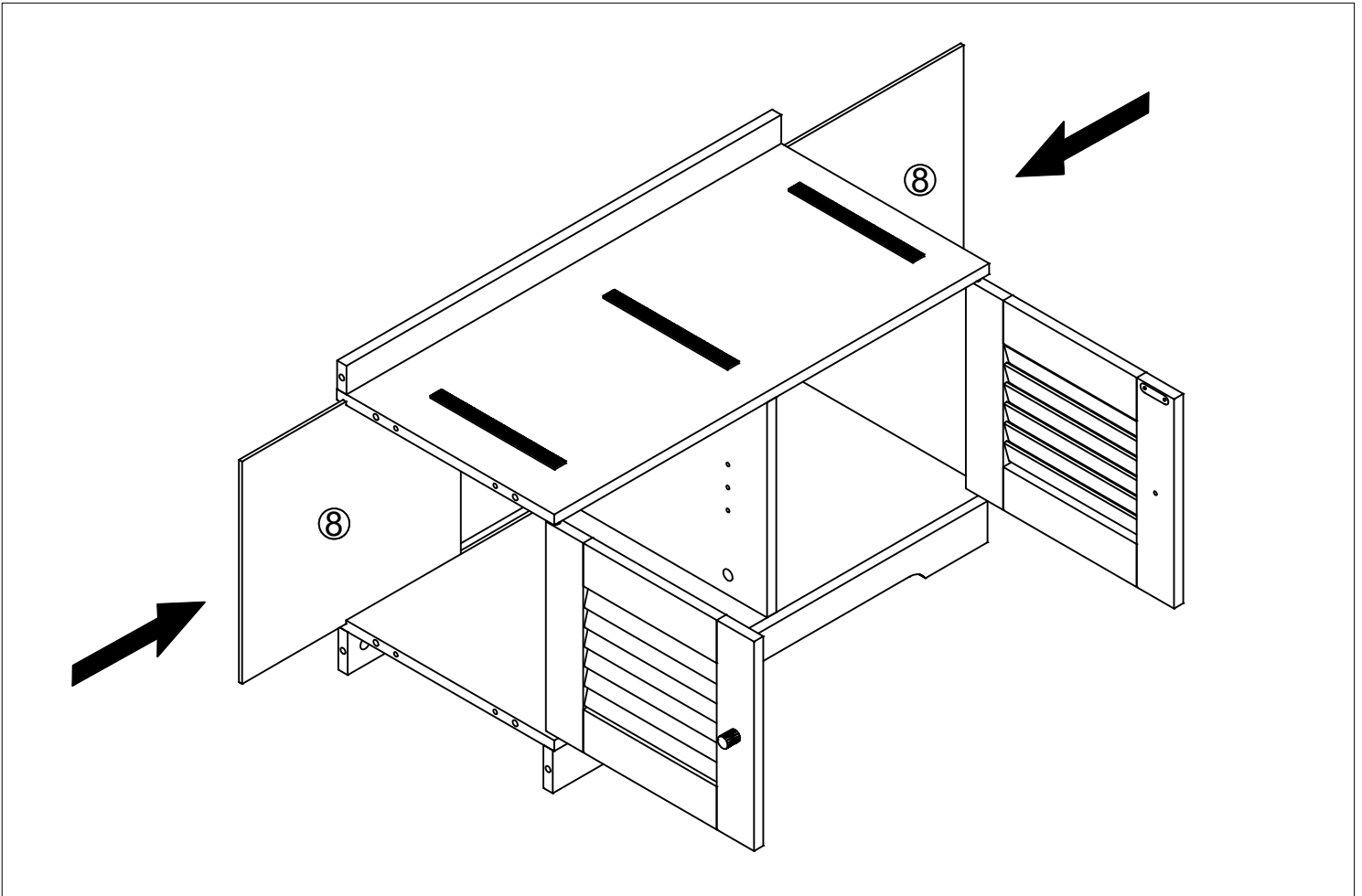


	BX2
	CX8
	GX4

PAEG7

will require these parts

STEP5

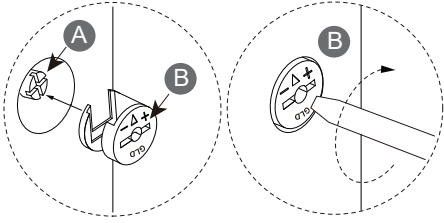


CX8

PAEG8

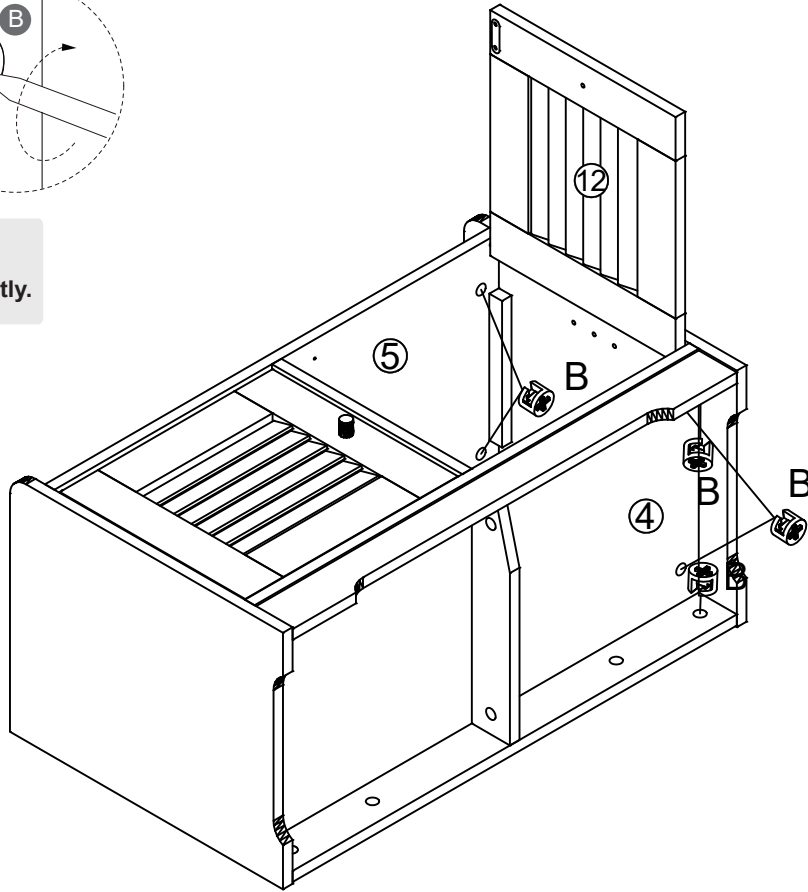
will require these parts

STEP 6

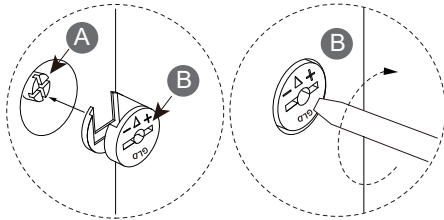


Attention:

Put **(B)** into the hole and turn **(B)** clockwise to lock **(A)** tightly.

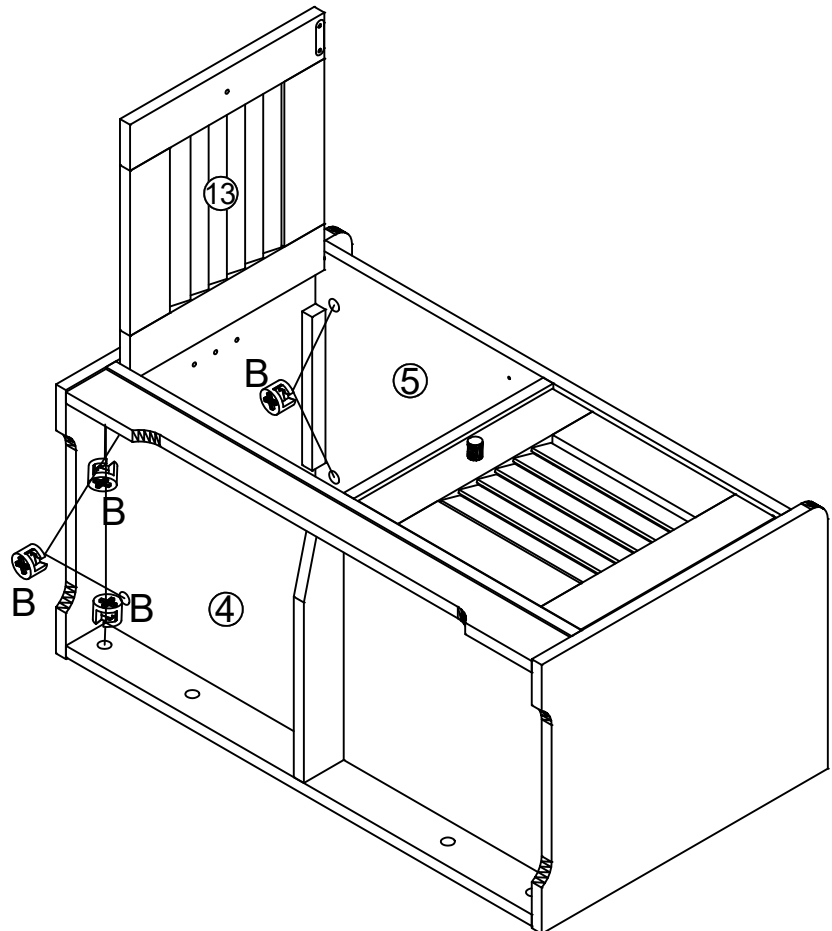


BX6



Attention:

Put **(B)** into the hole and turn **(B)** clockwise to lock **(A)** tightly.

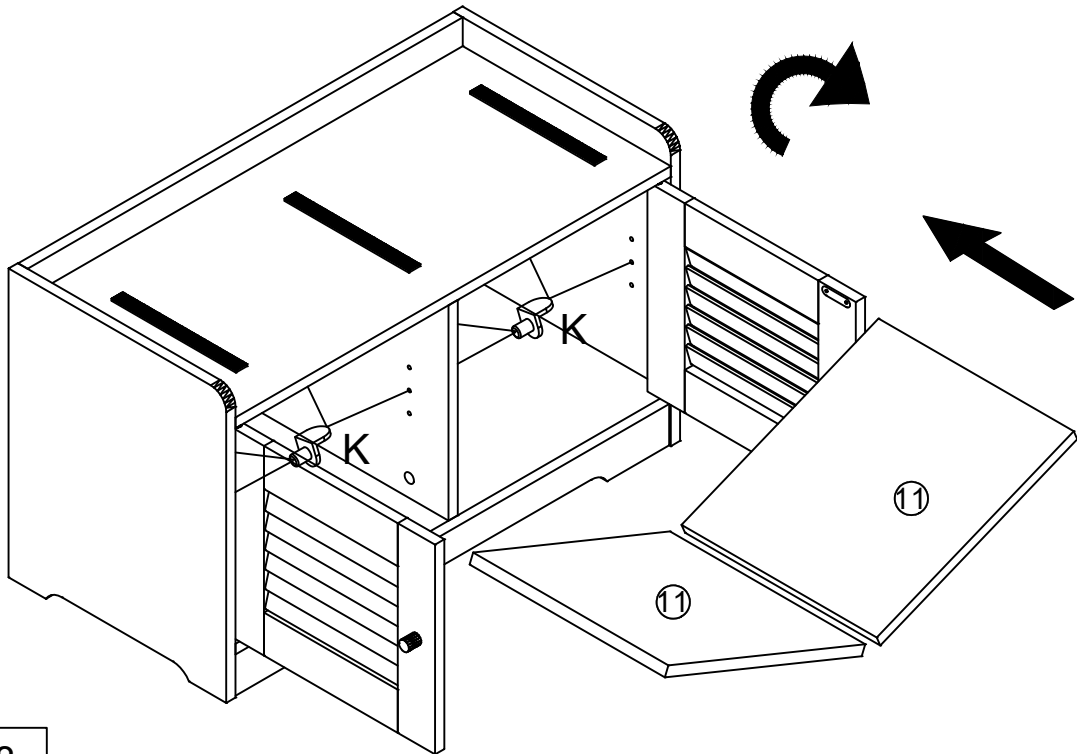


BX6

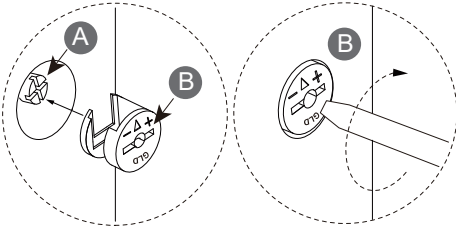
PAEG9

will require these parts

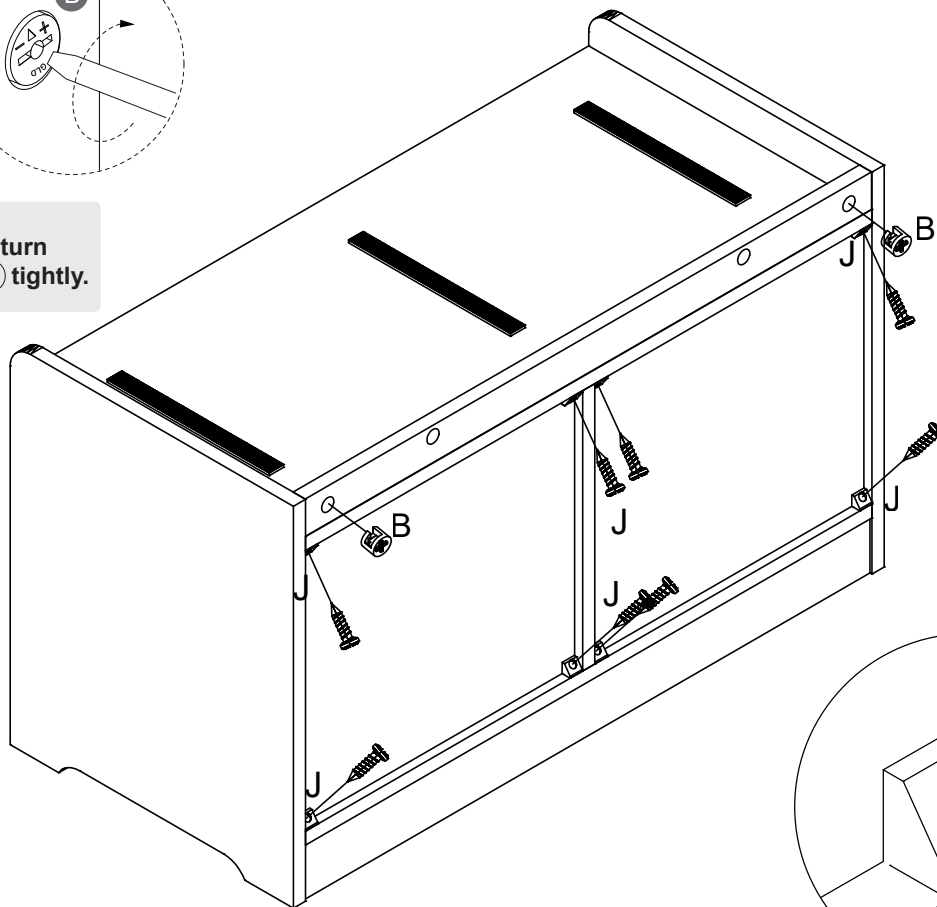
STEP 7



KX8



Attention:
Put **B** into the hole and
turn **B** clockwise to lock **A** tightly.



BX2



JX8

PAEG10

will require these parts

STEP8

