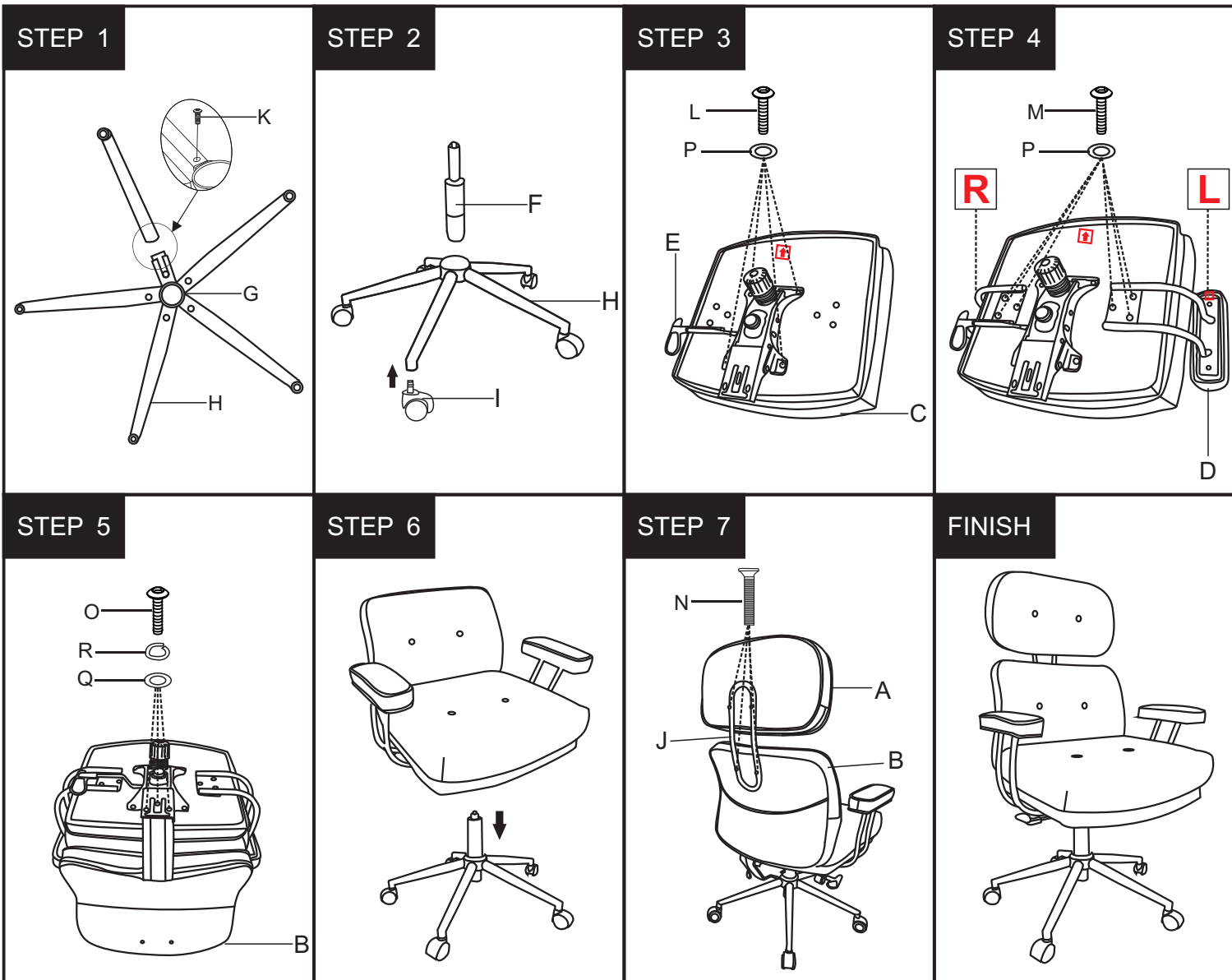


Assembly Instruction



ASSEMBLY INSTRUCTION

ASSEMBLY PROGRAM



▽ PARTS x QTY

A=Backrest x1	K=Screw(M6X14mm) x5
B=Pillow x1	L=Screw(M6X20mm) x4
C=Cushion x1	M=Screw(M6X30mm) x6
D=Armrest x2	N=Screw(M6X35mm) x4
E=Mechanism x1	O=Screw(M8X25mm) x3
F=Gaslift x1	P=Spacer(M6X18mm) x10
G=Base x1	Q=Spacer(M8X17mm) x3
H=Legs x5	R=Spacer(M8X13mm) x3
I=Castor x5	S=Spanner x1
J=Decorative sheets x1	