
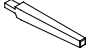

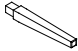






ASSEMBLY INSTRUCTIONS

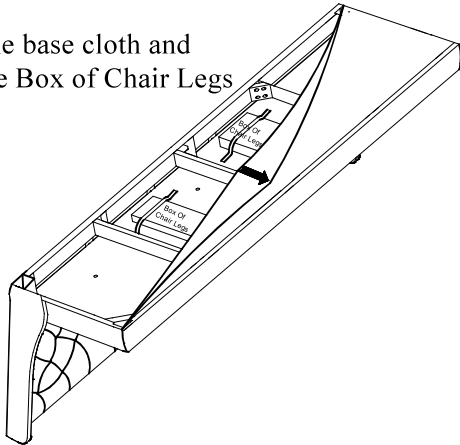
Description : Wing Bench

NO	Parts List	Q'TY
1	CHAIR FRAME WITH CUSHION SEAT 	1PC
2	FRONT LEG 	2PCS
3	REAR LEG (2L & 1R) 	3PCS
4	MIDDLE LEG 	1PC

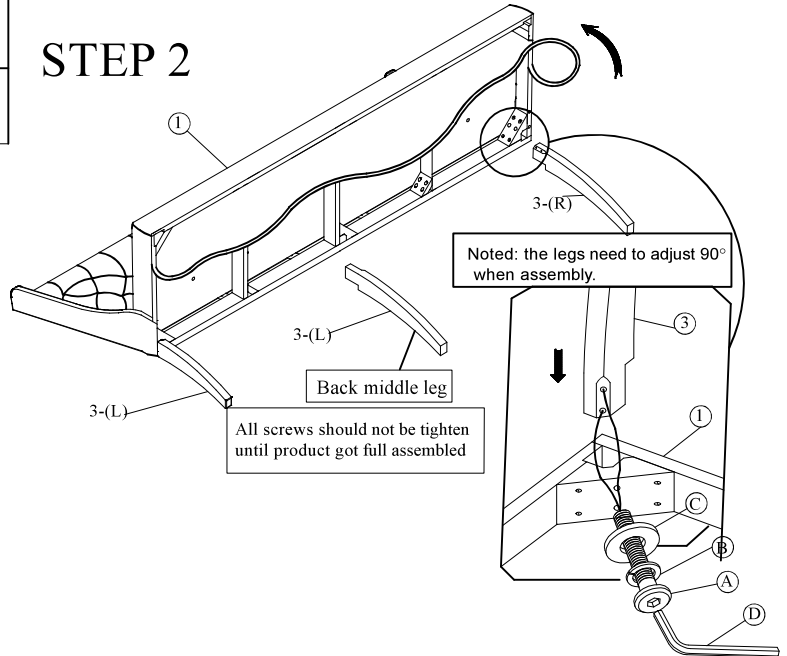
NO	Hardware List	Q'TY
A	 Ø1/4" * 50 mm	12 PCS
B	LOCK WASHER 	12 PCS
C	WASHER 	12 PCS
D	ALLEN KEY 	1PC

STEP 1

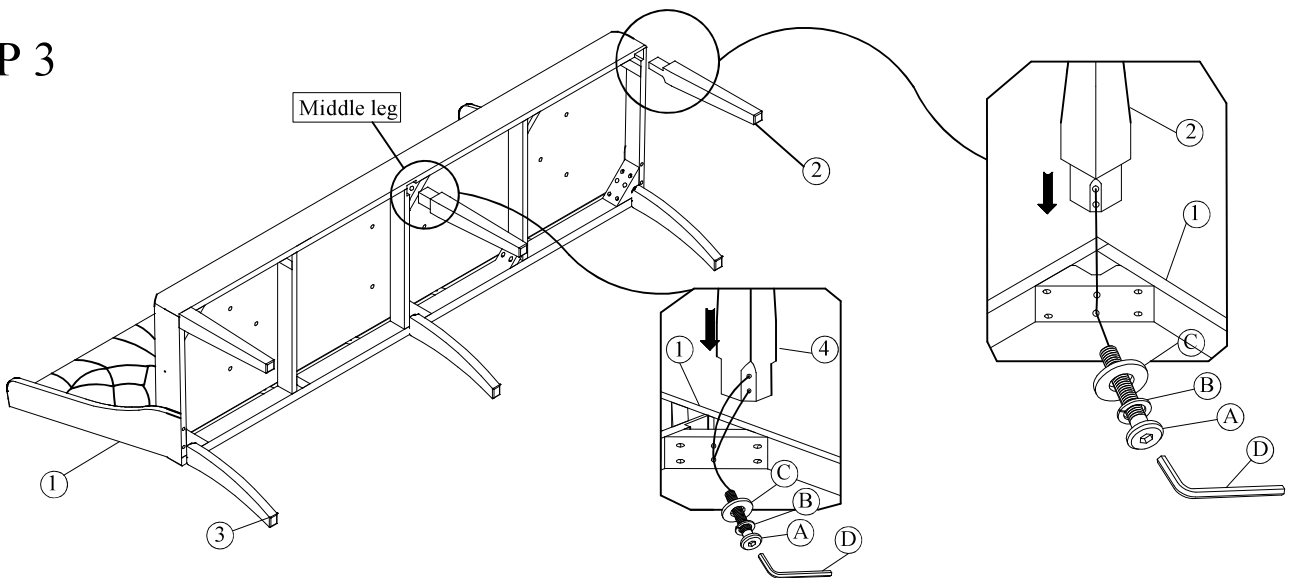
Uncover the base cloth and take out the Box of Chair Legs



STEP 2



STEP 3



STEP 4

