

Bistro set

Assembly Instructions

Assembly Tips:

To properly align metal parts, all hardware should first be fastened to about one rotation from being snug. DO NOT "tighten as you go."

Do not overtighten. A small socket wrench is adequate. A power drill/socket is quicker, but also more likely to over-torque and damage the unit. It is also more likely to strip the powder-coat off of the hardware, allowing rust to form.

Parts List

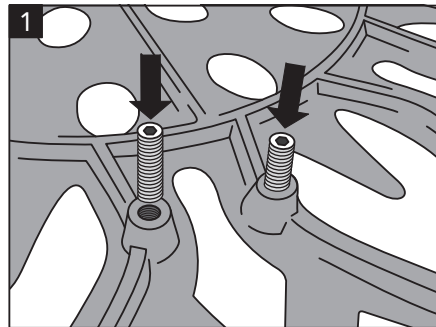
Table top	1
Table legs	3
Circle brace	1
Chair seat	2
Chair backrest	2
Chair legs	8

Hardware

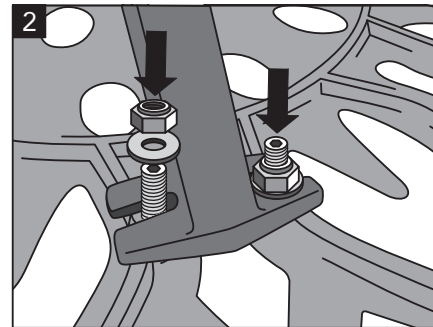
Stainless steel studs	26
Stainless steel lock nuts	26
Stainless steel flat washers	26
Stainless steel screws	3
"L" wrench	1
1/2" flat wrench	1

Hardware kit includes an extra piece of each size.

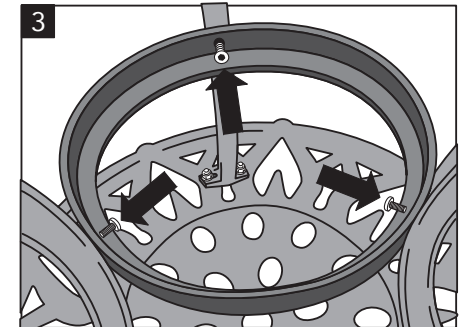
Table



Step 1. Lay table top upside down on a protected surface. Thread stainless steel studs as shown. Use "L" wrench, but do not tighten.

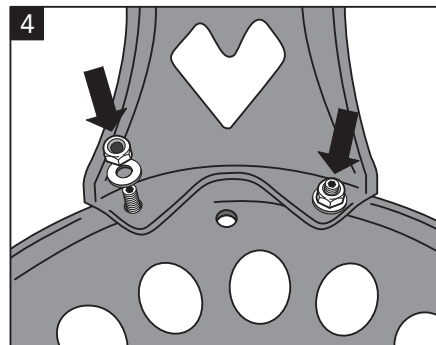


Step 2. Position a table leg between the studs and attach with a pair of washers and nuts. Repeat with the other legs. Leave some play, and do not tighten.

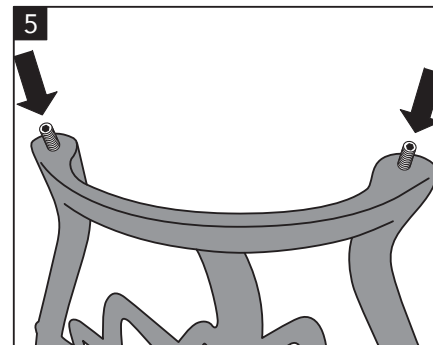


Step 3. Position the cast iron circle brace midway up the legs and attach using short screws. Tighten both these and the hardware in step 2 until the unit is firm and solid.

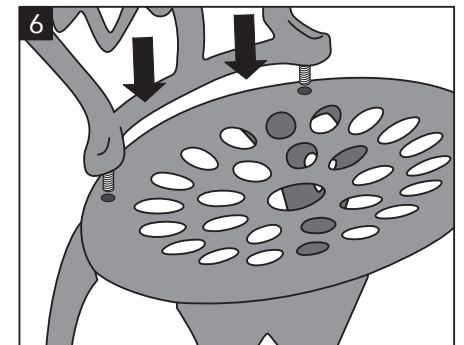
Chair



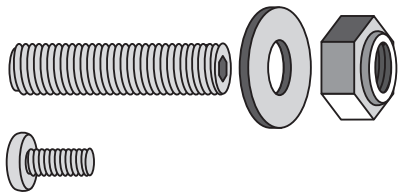
Step 4. Lay chair seat upside down on a protected surface. Thread stainless steel studs into bottom of seat. Attach legs as shown using flat washers and lock nuts. Tighten.



Step 5. Insert two stainless steel studs into the threaded holes in the bottom of the backrest. Hand tighten.



Step 6. Stand the seat section upright on its legs. Attach the backrest to the seat by inserting the threaded studs through the holes in the seat and fasten with flat washers and nuts. Tighten.



Maintenance Tip:

Although this is a maintenance-free product, there are steps you can take to keep it looking its best. Sun exposure will eventually break down any paint, even 2 layers of powder coat. Less sun exposure equals longer paint life. Partial shade placement, off season storage, etc. helps extend the life of the finish. If the product needs to be in the sun year-round, do so. That's what it was designed for.