

Walk-In Bathtub User Manual



Read Carefully Before Use
Keep for Future Reference

Safety Information

Warning

General Safety

- Improper installation and/or operation may result in property damage or injury. Follow the instructions carefully and contact customer service or a local contractor if any point is confusing, too difficult for you to do on your own, or requires special modification for your home. Keep these instructions for future reference. Provide them to anyone who will use this device and provide them with this device if it is ever given or sold to a third party.
- **ONLY** use this bathtub for its intended purpose: bathing and soaking in water for personal hygiene and relaxation.
- **DO NOT** allow children under age 8 or persons with compromised physical or mental capabilities to use this bathtub without close supervision.
- **DO NOT** use while under the influence of alcohol, drugs, or any medication that negatively affects your judgment or reflexes.
- Ensure all components and fasteners are intact and securely tightened before use. Do not operate this bathtub if any part is damaged or shows signs of malfunction. Repair or replace problematic components before further use. Never replace any parts with nonidentical ones.
- **ALWAYS** place the bathtub on a flat, stable surface that can bear its weight while fully filled with the user and water. The surface must be impervious to damage from moisture and the surrounding area must be able to handle the expected humidity created by the water.

Electrical Safety

- **DO NOT** allow electric appliances (such as a hair dryer, lamp, telephone, radio, or television) within 4 feet (122 cm) of this bathtub.
- Ensure all electrical outlets and exposed electrical connections around are at least 10 feet (300 cm) away from this bathtub or fully protected from possible splashing during bathing. Do not use any chargers or extension cords closer to this distance without similar protection.

Operational Safety

- Water may accumulate on the tub floor and other bathroom surfaces and become a slipping hazard. Use caution when entering or exiting the bathtub to avoid injury. We recommend placing a non-slip mat at the entrance of the bathtub.
- Use **ONLY** the armrest and faucet deck as supports when entering the bathtub. **DO NOT** use the door or faucet components as supports.
- Ensure that the water temperature in the bathtub is moderate to prevent scalding or catching a cold.

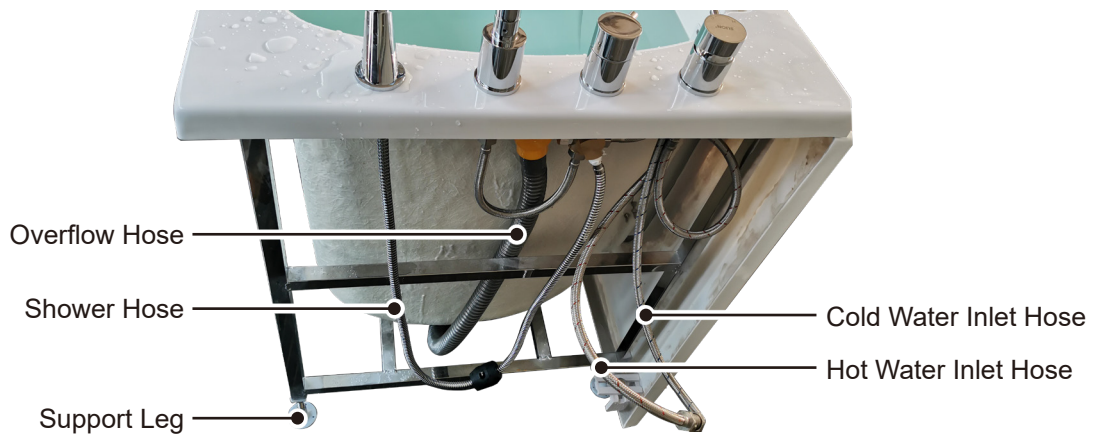
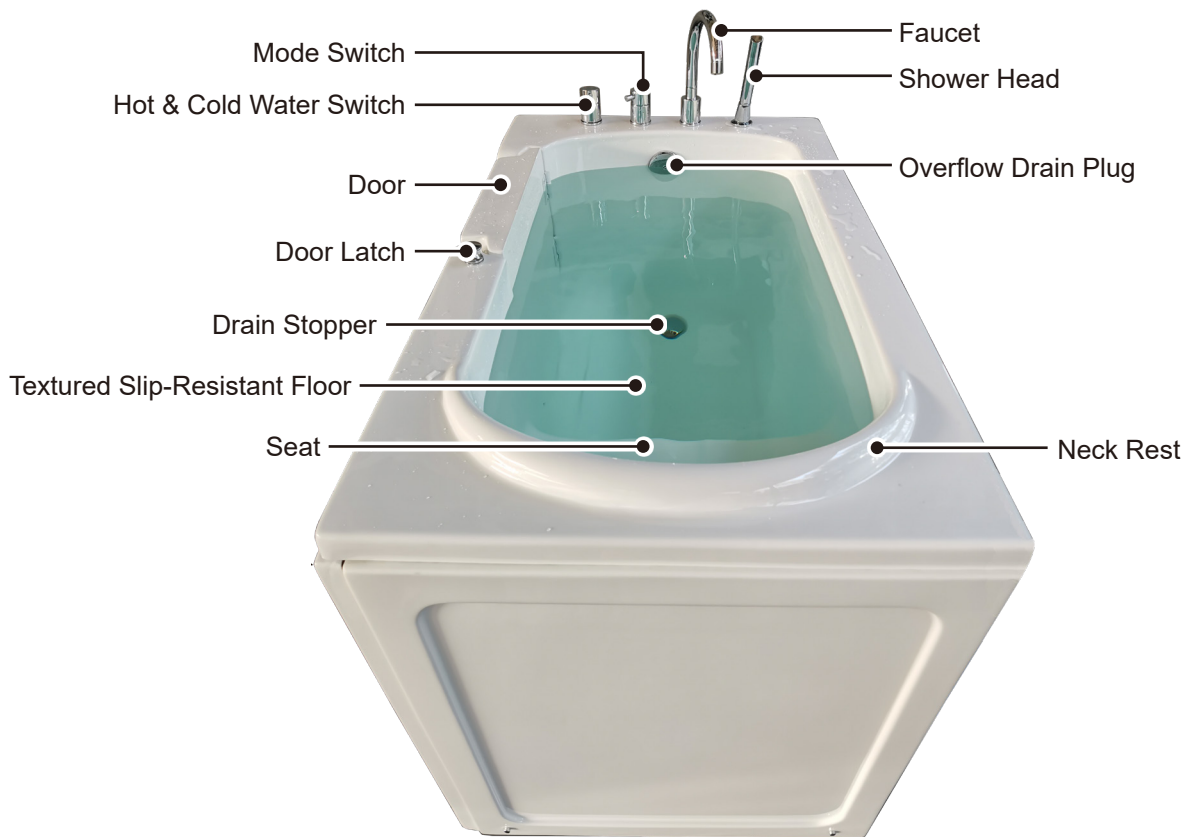
Safety Information

- **DO NOT** leave this bathtub unattended during use.
- Before filling the bathtub with water, make sure that the bathtub door is fully closed.
- **NEVER** allow the water level to rise above the level of your pet's chin during use.
- Adequate ventilation should be provided to safely deal with the expected heat and humidity.
- **DO NOT** add chemicals other than standard mild soaps and shampoos to the bathing water. After use, only apply a non-toxic cleaning agent to the bathtub's internal surface and rinse it away completely. For sterilization, only use safe and non-toxic disinfectants.

Specifications

Weight Capacity	1102 lb.	500 kg	
Water Capacity	67.3 gal.	255 L	
Water Inflow Rate	5.8 gal./min	22 L/min	
Water Outflow Rate	13.4 gal./min	51 L/min	
Seat Height	12.6 in.	320 mm	
Shower Hose Length	4.9 ft.	1.5 m	
Drain Outlet O.D.	1.26 in.	32 mm	
Water Inlet Hoses	Coupler I.D.	0.78 in.	20 mm
	Length	23.6 in.	600 mm
Faucet Height	10.28 in.	261 mm	
Dimensions (without Hardware)	52.36×29.92×37.01 (in.)	1330×760×940 (mm)	
Net Weight	132.3 lb.	60 kg	

Product Diagram



Package List

No.	Item	Qty.
A	Bathtub	1
B	Faucet	1
C	Shower Head	1

No.	Item	Qty.
D	2.5 mm Hex Wrench	1
E	Faucet Aerator	1
F	Aerator Wrench	1

Installation

Warning

Wear work gloves and other PPE necessary for your work before installation.

Unpacking

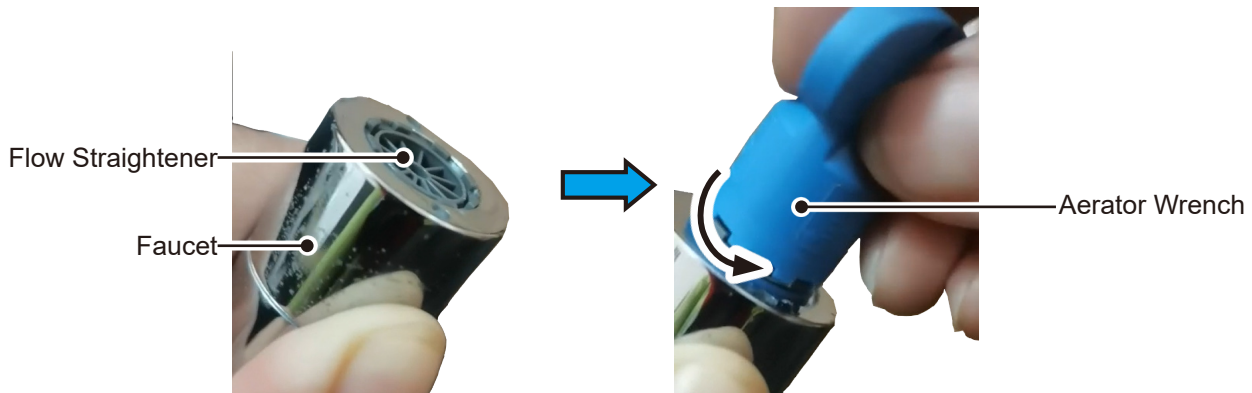
1. Remove all packing materials.
2. Check all components and accessories for any damage during transport.

If any damage is discovered, notify customer service and do not continue with installation until the product has been completely repaired.

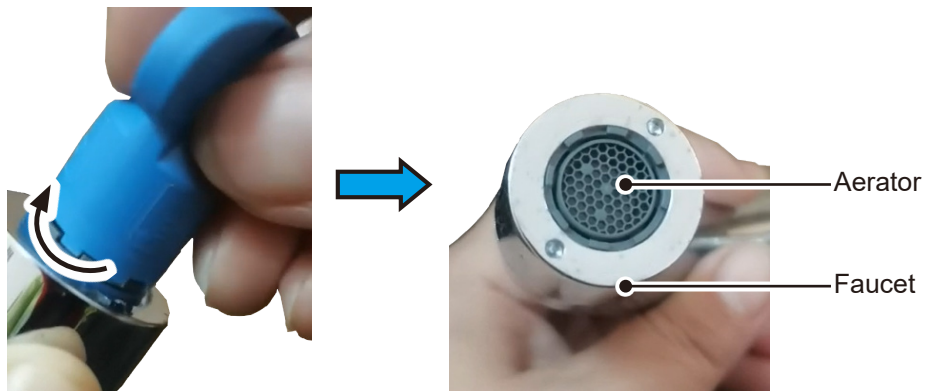
(Optional) Installing the Faucet Aerator

If you want to reduce water inflow rate of the faucet and save water, replace the preinstalled flow straightener on the faucet with the provided aerator (E) following the steps below.

1. Loosen and remove the preinstalled flow straightener on the faucet with the aerator wrench (F).



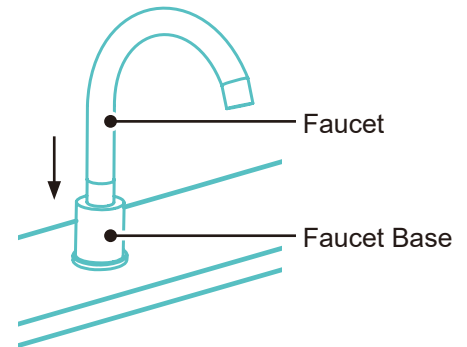
2. Insert the aerator into the faucet and tighten it with the aerator wrench.



Installation

Installing the Faucet

1. Loosen and remove the preinstalled bolt on the faucet base with the provided 2.5 mm hex wrench (D).
2. Attach the faucet (B) to the base.
3. Ensure that the water outlet of the faucet faces the bathtub.
4. Replace and tighten the removed bolt to secure the faucet.



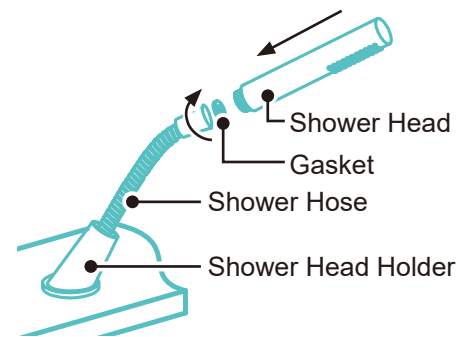
Installing the Shower Head

1. Pull out the shower hose from the shower head holder.
2. Attach the shower head (C) with a gasket to the hose by turning it clockwise.

Warning

DO NOT overtighten the shower head.

3. Put the shower head on the holder.



Selecting a Location

1. Select an appropriate location to place the bathtub that meets the following conditions:
 - It must be flat, stable, and able to easily bear the weight of the fully-filled tub, resistant to high humidity, and ideally out of direct sunlight.
 - Adequate water supply, drainage, and ventilation must be provided.
 - Metal surfaces and electronic devices should be kept at a suitable distance.
 - All electrical connections nearby should be fully protected and grounded.
2. (Optional) It is recommended to apply silicone sealant (not included) between the surface and the wall to prevent water penetration and mold growth.

Installation

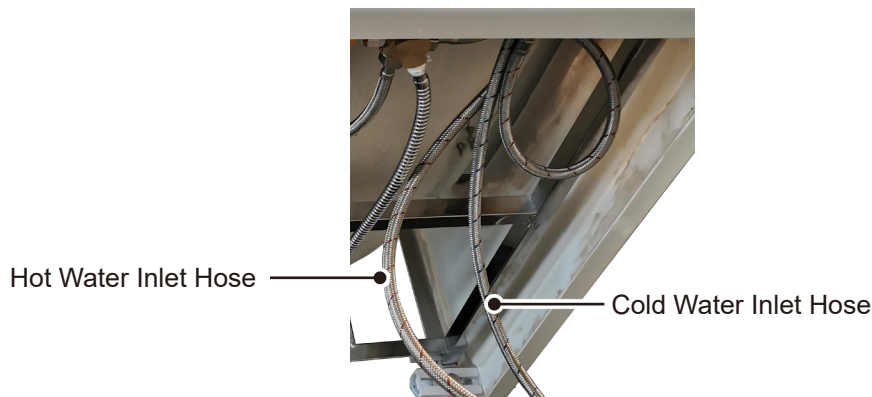
Transporting and Leveling

1. Use 2 or more people to transport the bathtub to the selected location.
2. If the bathtub is uneven, adjust following the steps below.
 - a. Use an adjustable wrench (not included) to loosen the nuts of one support leg.



- b. Extend or shorten the leg as needed.
- c. Retighten the nuts.
- d. Repeat this procedure as necessary.

Connecting to Your Water Supply and Drainage System



1. Ensure your water supply is turned off.
2. Connect the hot water inlet hose (red) to your hot water supply line.
3. Connect the cold water inlet hose (blue) to your cold water supply line.
4. Fit the end of the drain hose into your building's drainage system.

Checking for Water Leakage

1. Turn on your water supply.
2. Visually check for any water leaking from all the connections.
3. If there is water leaking out, turn off your water supply immediately, redo the connection where the leakage is, and repeat steps 1–2 until there is no water leakage.
4. Reinstate everything.

Operation

Bathing


1. Ensure that the drain stopper is closed.
2. Turn on your water supply and adjust your water heater as necessary.

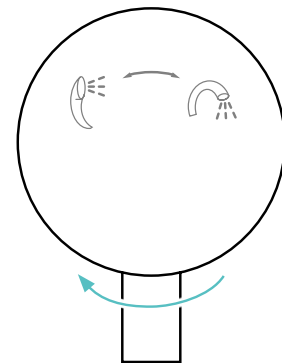
Note: *It is recommended you set the maximum temperature of your water heater to provide your desired temperature at the faucet, preventing any possibility of accidental scalding.*

3. Pull up the door latch to open the bathtub door and enter the bathtub.

Warning

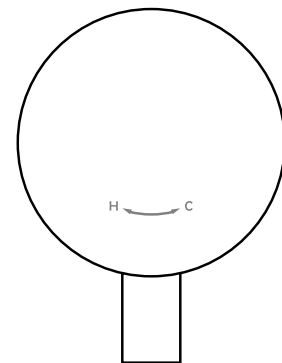
Water on the tub floor and other bathroom surfaces may accumulate and become a slipping hazard. Use caution when entering the bathtub to avoid injury.

4. Sit on the bathtub seat and fully close the door.
5. Ensure the mode switch is turned clockwise to switch to the faucet mode ().



6. Turn on the hot & cold water switch, carefully test the water temperature, and adjust the switch as needed.

Turning the switch towards **H** increases the water temperature; turning it towards **C** decreases the water temperature.



7. Wait until the water has reached the desired level, and then turn off the hot & cold water switch.
8. After bathing, press the drain stopper once to open it and completely drain the water.

Operation

Showering

1. Ensure that the drain stopper is opened.
2. Turn on your water supply and adjust your water heater as necessary.


Operation

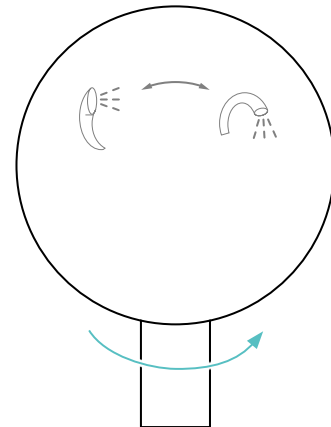
Note: It is recommended you set the maximum temperature of your water heater to provide your desired temperature at the faucet, preventing any possibility of accidental scalding.

3. Pull up the door latch to open the bathtub door and enter the bathtub.

Warning

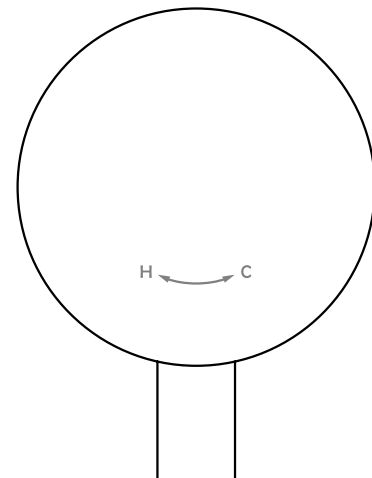
Water may accumulate on the tub floor and other bathroom surfaces and become a slipping hazard. Use caution when entering the bathtub to avoid injury.

4. Sit on its seat and then fully close the door.
5. Ensure the mode switch is turned counterclockwise to switch to the shower head mode ().



6. Pull out the shower head from its holder as needed.
7. Turn on the hot & cold water switch, carefully test the water temperature, and adjust the switch as needed.

Turning the switch towards **H** increases the water temperature; turning it towards **C** decreases the water temperature.



Maintenance

- After each use, wash the internal surface of the bathtub with mild detergent and a wet sponge or soft cloth. Do not use caustic chemicals or harsh abrasives. Rinse thoroughly after cleaning and drain completely. Remove any debris, hair, etc. from the tub and dispose of it appropriately. Rinse again as needed and dry it or allow time to air dry.
- Between uses, it is highly recommended to sterilize the interior of the bathtub with nontoxic and eco-friendly disinfectant.
- Check all parts of the bathtub for any signs of looseness, wear, or damage between uses. Tighten, repair, or replace any problematic components before further use.

Troubleshooting

Possible Problems	Possible Solutions
Reduced water flow or no water	Check your water supply.
	Check the intake and hose connections.
	Turn off your water supply and check the showerhead, faucet, and hose for any blockage or excessive wear or corrosion.
No hot water	Check your water heater.
	Turn off your water supply and check the hot water intake.
	Check your hot & cold water switch for any blockage or excessive corrosion.
Reduced or no drainage	Check the condition of the drain valve.
	Remove any debris from the drain outlet.
	Check your drain hose for any blockage, excessive wear, or corrosion.
Water leakage	Retighten all water connections.
	Check the hoses, and repair or replace the problematic ones.

Contact Us

Thank you for choosing our products! If you have any questions or comments, contact us at help@cs-supportpro.com and we'll resolve your issue ASAP!

For a .pdf copy of the latest version of these instructions, use the appropriate app on your smartphone to scan the QR code to the right.



W I B - N 0 0 0 - 0 1
W I B - N 0 0 0 - 0 2
Rev. 16 Jul. 2024