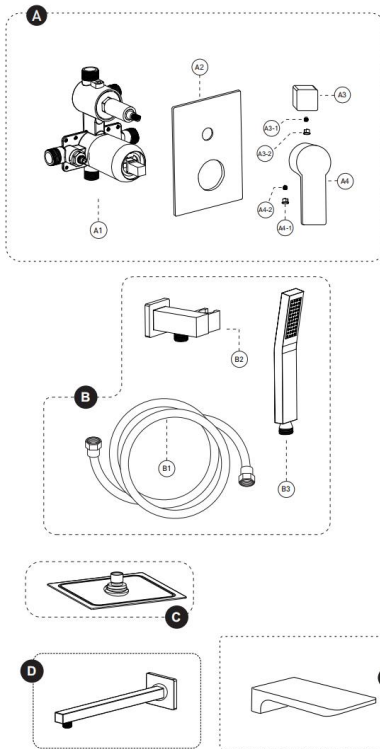
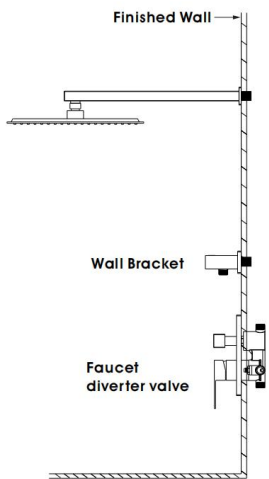


PRODUCT DRAWING



No.	Description				
A	Pressure balanced diverter valve				
A1	Valve				
A2	Face plate with sealjoint				
A3	Diverter knob kit				
A3-1	Allen screw (A-3 included)				
A3-2	Trim cap (A-3 included)				
A4	Shower valve handle				
A4-1	Trim cap (A-4 included)				
A4-2	Allen screw (A-4 included)				
B	Handheld Shower Kit with Flexible Hose				
B1	Flexible hose				
B2	Wall Bracket				
B3	Handheld Shower				
C	Shower head				
D	Shower arm and flange kit				
E	Bathtub spout				
Z	Accessories Package				
<table border="0" style="width: 100%;"> <tr> <td style="width: 50%; text-align: center;">For Repair And Warranty <small>(Spare Parts)</small></td> <td style="width: 50%; text-align: center;">For Installation <small>(Spare Parts)</small></td> </tr> <tr> <td style="text-align: center;"> </td> <td style="text-align: center;"> </td> </tr> </table>		For Repair And Warranty <small>(Spare Parts)</small>	For Installation <small>(Spare Parts)</small>		
For Repair And Warranty <small>(Spare Parts)</small>	For Installation <small>(Spare Parts)</small>				

SHOWER SYSTEM FAUCET

Installation instruction



MB/BN/BG/CH/ORB

CARE INSTRUCTIONS

Rinse the product with clear water. Dry the product with a soft cloth.

DO NOT:

Use abrasive cleansers, cloths, or paper towels. Use any cleaning agents containing acids, polish, wax, alcohol, ammonia, bleach, solvent or any other corrosive or harsh chemical cleansers.