

BASE CABINETY ASSEMBLY INSTRUCTIONS

Prepare a protection layer, a screwdriver

STEP 1: Pick up the frame and doors

STEP 2: Joint side panel with frame using METAL BRACKET & SCREW 4*15

STEP 3: Joint another side panel with frame using METAL BRACKET & SCREW 4*15

STEP 4: insert bottom panel and Joint bottom panel with frame using CLEAT & SCREW 3.5*12

STEP 5: Attach back panel using SCREW 3.5*40

Joint back panel with side panel (back direction) using CLEAT & SCREW 3.5*12

Joint back panel with side panel (bottom direction): using METAL BRACKET & SCREW 4*15

STEP 6: Joint toe kick with side panel using CLEAT & SCREW 3.5*12

STEP 7: Joint back panel with side panel using METAL BRACKET & SCREW 4*15

Put on PLASTIC BRACKET for drawer using SCREW 4*14 Flat hat

Attach slides using SCREW 4*14 Flat hat

STEP 8: Assemble the drawer

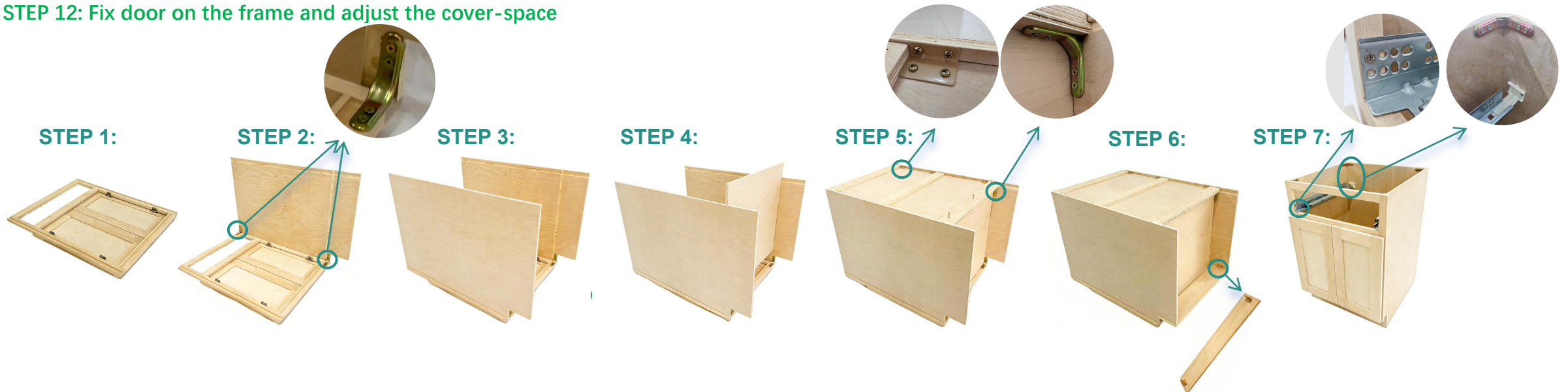
STEP 9: Install the GLIDE RUNNER onto the drawer bottom panel using SCREW 4*14

STEP 10: Install the Drawer onto the Glides and fit the glide hook into the hole of the drawer back.





STEP 11: Put on the adjustable shelves & BUMPER

STEP 12: Fix door on the frame and adjust the cover-space

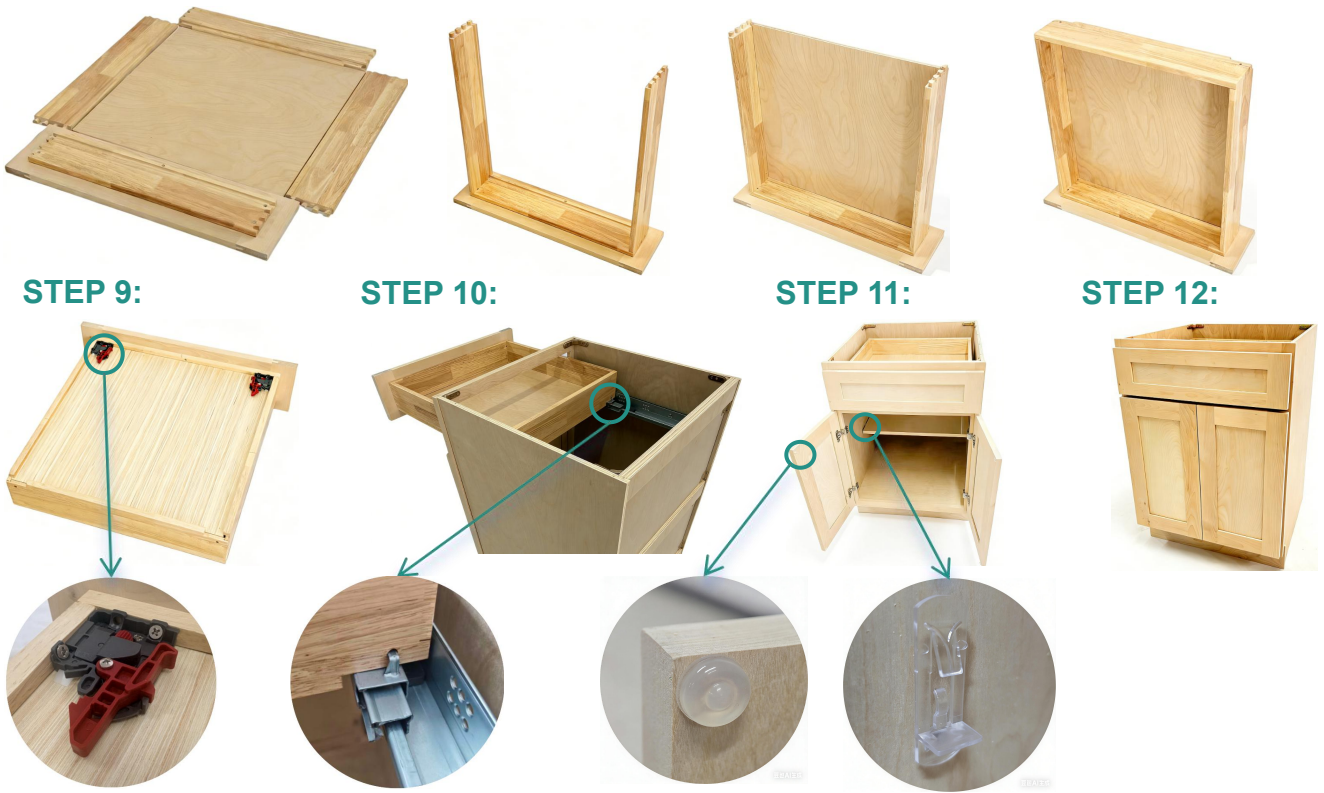
PARTS LIST		
NO	DESCRIPTION	QTY
A	SIDE PANEL	2
B	BACK PANEL	1
C	BOTTOM PANEL	1
D	FACE FRAME & DOOR	1
E	ADJUSTABLE SHELF	0 / 1
F	TOE KICK	1
G	DRAWER FRONT	0 / 1
H	DRAWER SIDE PANEL	0 / 2
I	DRAWER BACK PANEL	0 / 1



HARDWARE LIST

NO	DESCRIPTION	QTY	PICTURE
1	SCREW 3.5*12 Round hat	32 / 36 / 40	
2	SCREW 3.5*40	2 / 3 / 4 / 6	
3	CLEAT	8 / 9 / 10	
4	SHELF CLIP	0 / 4	
5	BUMPER	2 / 4 / 6 / 8 / 10 / 20	
6	METAL BRACKET	0 / 8	
7	SCREW 4*15 for BRACKET	0 / 32	
8	GLIDE RUNNER	0 / 2	
9	PLASTIC BRACKET for drawer	0 / 2	
10	SCREW 4*14 Flat hat	0 / 12	

STEP 8: Joint drawer side panel with drawer front
 Insert the drawer bottom panel and joint
 Assemble the drawer back panel with side panel



STEP 9:

STEP 10:

STEP 11:

STEP 12: