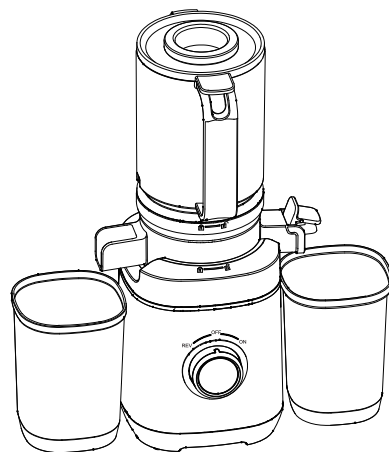


成品尺寸：A5纸大小
纸张材料：157g双铜

MK-SJ22

User Manual

Instruction manual



Enjoy it.

Enjoy it.

Masticating Juicers

Directory

① Precautions.....	01
② Product parameters.....	02
③ Product diagram.....	03
④ Instructions for use.....	04
⑤ Operating instructions.....	05
⑥ Care and maintenance.....	06
⑦ Troubleshooting methods for common faults.....	07
⑧ Warranty terms.....	08

①. Precautions

1. Tips: To avoid injury and property loss to you and others, please be sure to follow the safety precautions below. Failure to follow the safety warnings and incorrect use may lead to accidents.
2. Note: This product does not take into account the following situations: unattended use of the appliance by young children and disabled people, and the situation of young children playing with the appliance.

01. [Prohibition] Content:

1. This product is limited to home use only and is prohibited for commercial use.
2. It is prohibited to use inferior power strips and children are prohibited from operating it.
3. It is strictly forbidden to place the product near flammable items. When using it, be careful to keep away from curtains, drapes, curtain walls or similar items to prevent fire and property loss.
4. To prevent the risk of electric shock, do not immerse the machine and its parts in water or other liquids.
5. When the machine is not in use, the plug must be unplugged from the socket before installing or removing parts, and before cleaning.
6. Do not modify: Except for maintenance technicians, no one else is allowed to disassemble or repair it to avoid fire, electric shock, and injury.
7. Do not use voltages other than AC 120V~ to avoid causing the product to not work and affecting the product life.
8. Do not use if the power cord plug or cord body is damaged.
9. Do not operate in the following ways: forcibly bend the power cord, approach high temperature, bundle, carry heavy objects, etc., to avoid fire or electric shock caused by damage to the power cord.
10. During operation, it is prohibited to move or shake the product.
11. Do not let children operate it alone. It should be placed in a place where infants and young children cannot touch it to avoid dangerous accidents such as electric shock or personal injury caused by touching the juice extraction parts.
12. Do not insert pins, wires or other objects into the exhaust hole at the bottom of the product to avoid electric shock.

02. [Mandatory] Content:

1. The appliance must not be immersed in water or sprayed with water or washed.

01

2. This product is only suitable for indoor use.
3. If there is dust or water on the power cord plug, please clean it in time to avoid fire, electric shock or short circuit.
4. If you need to repair the product or replace parts, please contact after-sales service to avoid hidden dangers due to improper repair or improper selection of accessories.
5. The plug must be completely inserted into the socket to avoid fire, electric shock, and short circuit.
6. Do not unplug the plug with wet hands to avoid electric shock and injury.
7. If the power cord is damaged, it must be replaced by professionals from the manufacturer, other maintenance departments, or similar departments to avoid danger.
8. The appliance cannot be operated in an external timer or independent remote control system.
9. When putting in food, if the food is stuck in the feed port, please use the push rod configured by the product to press the food down. Do not press the food with fingers, spoons, chopsticks, etc. to avoid personal injury and product damage;

03. [Warning] Matters that may cause personal injury:

1. When using this product, people with pacemakers or hearing aids or cochlear implants should consult authorized medical personnel and refer to the instructions provided by the medical device.
2. When the product is in operation, do not put your fingers or other hard objects into the machine to avoid personal injury caused by moving parts.
3. Be careful not to let ties, necklaces, scarves, hair, etc. get caught in the juicer lid, which may cause personal injury, machine failure, or damage.
4. After each use, make sure the machine is turned off. Before disassembling the machine, make sure the motor has completely stopped to avoid personal injury caused by moving parts.
5. When the product is not in use or when you go out, be sure to unplug the power cord, otherwise it is easy to malfunction or be dangerous.

04. [Note] Matters that may cause minor injuries or property damage:

1. The product must be used on a stable and dry countertop to avoid product damage or accidents.
2. Some important parts, such as fuses, may fail to maintain the product protection if they are improperly repaired or short-circuited without permission, resulting in overheating or fire.

02

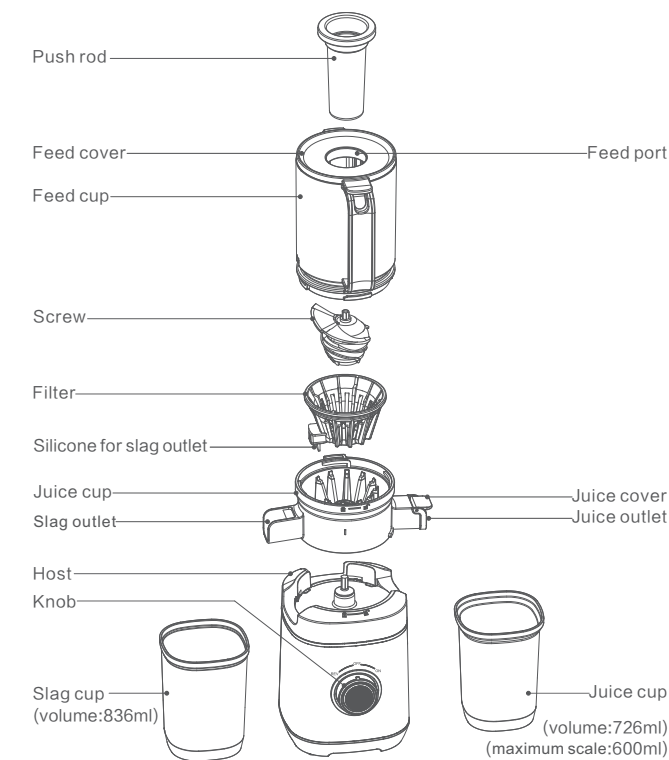
05. [Tips] Content:

- 1.If the product picture is inconsistent with the actual product, the actual product shall prevail.
- 2. Please do not start the machine for a long time before putting in any ingredients.
- 3.Before the product works,please check whether the juicer,juicer,and spiral squeezer are placed in place to avoid personal injury or machine failure.
- 4. If there is abnormal sound, excessive heating, smoking, etc. during use,please stop using it immediately and contact our service department immediately.
- 5. Please do not use it continuously for more than 10 minutes. After continuous use, you need to stop for 20 minutes before using it. If the motor overheats, the overheat protection will not work.Normal use can be resumed after the machine cools down.
- 6.Always ensure that the juicer lid is properly locked. During operation, do not loosen the juicer lid.
- 7. When switching from forward to reverse,do not switch quickly.Adjust to stop first and then proceed to the next operation.

②. Product parameters

Product Name	Masticating Juicers	Model No	MK-SJ22
Rated Voltage	120V~	Rated Frequency	60Hz
Rated Power	150W	N.W/G.W:	2.2kg/2.8kg
Size	189x163x394mm		

③. Product diagram



Tip: The pictures in the manual are for reference only. Please refer to the actual product.
Due to product updates and upgrades, the original manufacturer reserves the right to update the product. If there are any changes, no further notice will be given.

④. Instructions for use

1. Please place the product on a stable surface, not on a slippery surface.

2. Ingredients that require attention:

(1) For hard-core fruits such as plums, prunes, peaches, and lychees, the cores should be removed before adding them.

(2) For fruits with skins such as oranges, tangerines, grapefruits, lemons, watermelons, and cantaloupes, the skins should be removed before adding them.

(3) For vegetables with high fiber content such as celery and parsley, cut them into 3–4 cm pieces before adding them.

(4) Please do not add ingredients that cannot be cold-pressed, such as sesame seeds, peas, bark, and peppercorns.

(5) Please do not add fruits pickled with wine, honey, or sugar (grapes, raspberries, mulberries, etc.) and enzymes (seven-sided grass, orchid, etc.).

(6) Please do not add sugarcane or lemons to avoid damaging the machine.

(7) It cannot be used to crush grains and nuts or squeeze hard ingredients such as sugar cane and coconut. It cannot be squeezed with ice cubes. Frozen ingredients must be thawed before squeezing to avoid damaging the product.

3. When putting in ingredients, if there are ingredients stuck in the feed port, please use the push rod configured by the product to press the ingredients down. Do not press the ingredients with fingers, spoons, chopsticks or other objects to avoid personal injury and product damage;

4. After squeezing some ingredients, the parts may be stained, which is a normal phenomenon.

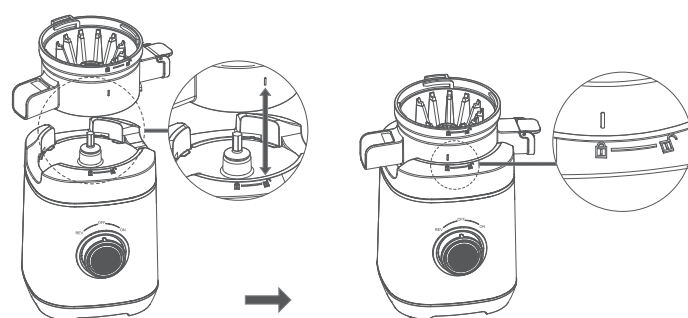
5. Please drink the squeezed juice as soon as possible and do not store it for a long time.

⑤. Operation Instructions

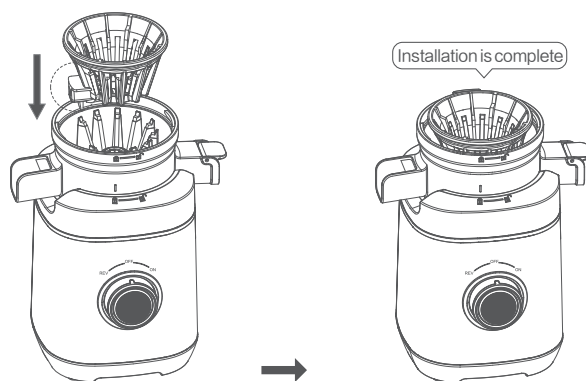
● Assembly method:

1. Align the 'I' mark on the juicer bowl with the 'unlock' mark on the host. Place it on top of the host and rotate it clockwise to screw it into place until the 'I' mark on the juicer bowl is aligned

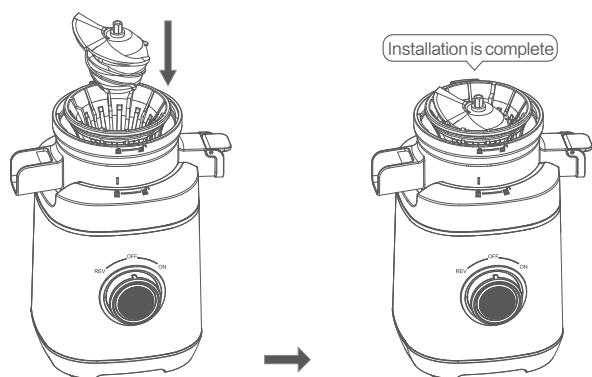
with the 'lock' mark on the host.



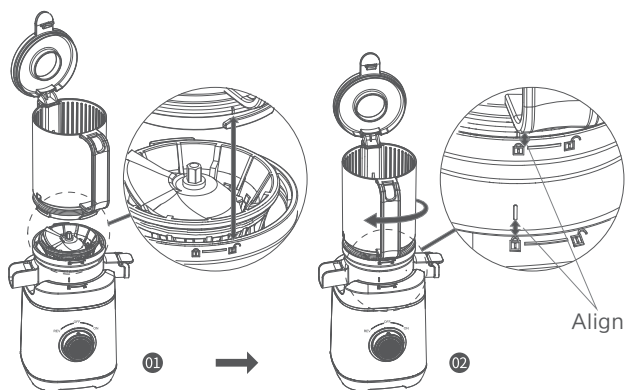
2. Place the filter into the juicer bowl and insert it to the bottom installation position to fully match the juicer cup. Note that the silicone of the slag outlet corresponds to the slag outlet. As shown in the figure.



3. Insert the screw assembly into the filter and rotate it left and right to fully secure it in place.

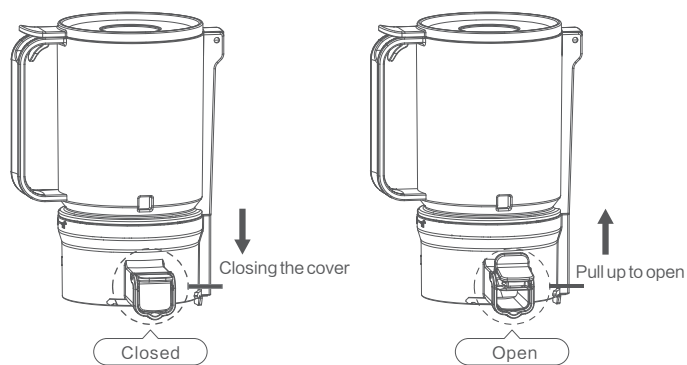


4. First, open the feeding cover on top of the feeding barrel. Screw the feed cup clockwise and lock it into the juicer cup until the 'I' mark on the feed cup is aligned with the '🔒' lock mark on the juicer cup. Then close the cup cover to complete the assembly of the juicer.



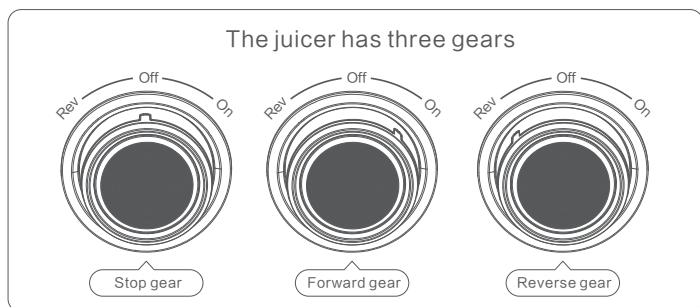
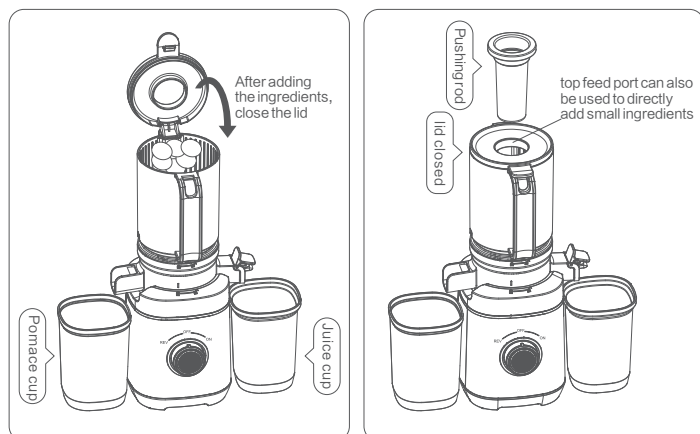
07

5. Before starting, adjust the juice cover to the appropriate position. Normally, it should be in the open state to allow the juice to flow out quickly, which helps extract more juice.



08

● Operation Instructions



1. Before juicing, ensure that both the pomace cup and juice cup are properly positioned.
2. Turn the knob clockwise to the 'ON' position to start the machine and begin juicing.

3. Open the feed cover to add larger ingredients. The feed port on the top of the cup cover can be used to add smaller ingredients directly. Use the push rod to push and convey the ingredients. (Note: Do not add hard ingredients like coconut or sugar cane. Lemon, citrus fruits, oranges, grapes, watermelon, cantaloupe, etc., should be peeled and pitted before use.) If ingredients become blocked in the juicer cup during operation, turn the knob counterclockwise to the 'REV' position for 3 to 5 seconds, then turn it back to the 'ON' position.
4. When you need to stop juicing, turn the knob to the 'OFF' position.
5. Before installing or removing the juicer, please open the feed cover.

⑥ . Care and Maintenance

1. Before cleaning, make sure to cut off the power supply and wait for the main unit to cool completely before cleaning.
2. It is strictly forbidden to rinse the main unit with water or immerse it directly in water for cleaning. It can be wiped clean with a damp soft cloth, and then wiped dry with a dry cloth.
3. Removable parts such as: pomace cup, juice cup, push rod, juice cup, feed cup, filter, screw, etc. can be washed with water. If there is residual pomace in the juice cup outlet, you can open the slag discharge cover and rinse with water.
4. The food crushing knife and screw inside the feed cup are relatively sharp, so please be especially careful when cleaning.
5. It is strictly forbidden to sterilize and clean the removable parts and juice cup, pomace cup, etc. at high temperature, otherwise the parts will be deformed. You can use warm water and an appropriate amount of detergent to wipe with a soft cloth.
6. After the machine is completely cleaned, wipe it thoroughly with a dry cloth and put the removable parts back in place.
7. If it is not used for a long time, please place the machine in a dry and ventilated place.

⑦ .Troubleshooting methods

Fault phenomenon	Cause analysis	Solution
The machine does not work	The machine is not powered	Plug the power cord into the socket
	The motor or other parts are damaged	Send to the designated maintenance point for repair
	There is no rotary switch knob	Turn the knob to the working position
	The juicer or feeder cup Not installed correctly	The juicer or juicer cover Reassemble and lock in place
	After 10 minutes of continuous use Thermal protection occurs	Stop and rest for 20 minutes, wait for the product to cool Then it can automatically resume normal use
After the machine is started Cannot squeeze	The food is blocked in the juicer cup	Use the reverse gear for 3~5 seconds and stop, Repeat 2~3 times and then squeeze; The food should be cut into appropriate sizes and slow down the speed of food input
	The food is blocked in the juicer cover	Use the push rod to push the food in; If it is still blocked, remove the juicer cover Clear the blocked food, The ingredients should be cut into appropriate sizes and slowed down.
	After hard food or objects are put in The machine cannot work	The machine is damaged. Please send it to the designated repair station for repair.
No juice/ no material feeding.	The screw is missing.	Reposing the screw.

⑧ .Warranty Terms

◎ This product provides one-year warranty service from the date of purchase. The warranty start date is based on the invoice date of the purchased product. Under normal household use, if the product is cracked or damaged due to non-human factors, the purchaser can bring the warranty card, invoice and damaged product to the designated repair point for repair service.

The following situations are not covered by free repair:

- (1) Damage caused by improper use, maintenance or storage;
- (2) Damage caused by disassembly by a repairer who does not provide the three guarantees;
- (3) No three guarantees certificate and no valid invoice;
- (4) The three guarantees certificate does not match the model of the repaired product or is altered;
- (5) Damage caused by force majeure;

◎ The warranty period is based on the invoice date of the purchase date.

◎ If the warranty period is exceeded or the product is not covered by free repair, our company will serve you wholeheartedly.

CUSTOMER SUPPORT

If you have any questions or concerns about your new product,
please contact our helpful Customer Support Team.

Email: JiangJ@gadgetgalaxyinc.com

DO NOT IMMERSE IN WATER