

FINXIN

SIMPLE LIFE . SIMPLE LOVE



CEILING FAN INSTALLATION

info@finxin.com.cn

Xinfeng Star Electronics Co., Ltd.

www.finxin.com.cn

SAFETY TIPS.

WARNING : To reduce the risk of electrical shock, turn off the electricity to the fan at the main fuse box or circuit panel before you begin the fan installation or before servicing the fan or installing accessories.

1. READ ALL INSTRUCTIONS AND SAFETY INFORMATION CAREFULLY BEFORE INSTALLING YOUR FAN AND SAVE THESE INSTRUCTIONS.

CAUTION : To avoid personal injury, the use of gloves may be necessary while handling fan parts with sharp edges.

2. Make sure all electrical connections comply with Local Codes or Ordinances, the National Electrical Code, and ANSI/NFPA 70-1999. If you are unfamiliar with electrical wiring or if the house/building wires are different colors than those referred to in the instructions, please use a qualified electrician.
3. Make sure you have a location selected for your fan that allows clear space for the blades to rotate, and at least seven (7) feet (2.13 meters) of clearance between the floor and the fan blade tips. The fan should be mounted so that the tips of the blades are at least thirty (30) inches (76 centimeters) from walls or other upright structures.
4. The outlet box and ceiling support joist used must be securely mounted, and capable of supporting at least 35 pounds (16 kilograms). The box must be supported directly by the building structure. Use only CETL or CUL in Canada or ETL or UL in USA listed outlet boxes marked "FOR FAN SUPPORT."

WARNING : To reduce the risk of fire, electrical shock, or personal injury, mount to the outlet box marked "Acceptable for Fan Support of 15.9 kg (35 lb) or less," and use the mounting screws provided with the outlet box. Most outlet boxes commonly used for the support of lighting fixtures are not acceptable for fan support and may need to be replaced. Consult a qualified electrician if in doubt.

WARNING : To reduce the risk of fire, electrical shock, or personal injury, wire connectors provided with this fan are designed to accept only one 12 gauge house wire and two lead wires from the fan. If your house wire is larger than 12 gauge or there is more than one house wire to connect to the corresponding fan lead wires, consult an electrician for the proper size wire connectors to use.

5. Electrical diagrams are for reference only.
6. After installation is complete, check that all connections are absolutely secure.
7. After making electrical connections, spliced conductors should be turned upward and pushed carefully up into the outlet box. The wires should be spread apart with the grounded conductor and the equipment-grounding conductor on opposite sides of the outlet box.

WARNING : To reduce the risk of fire or electrical shock, do not use this fan with any solid state speed control device or control fan speed with a full range dimmer switch. [Using a full range dimmer switch to control fan speed will cause a loud humming noise from fan.] (**Note:** This fan is suitable for use with remote control.)

8. Do not operate the reverse switch until fan has come to a complete stop. [**Note:** If using remote control with reverse capability, reverse fan blade direction only when on LOW speed.]
9. Do not insert anything between the fan blades while they are rotating.

WARNING : To reduce the risk of personal injury, do not bend the blade arms during assembly or after installation. Do not insert objects into the path of the blades.

WARNING : To avoid personal injury or damage to the fan and other items, be cautious when working around or cleaning the fan.

10. Do not use water or detergents when cleaning the fan or fan blades. A dry dust cloth or lightly dampened cloth will be suitable for most cleaning.

WARNING: To reduce the risk of personal injury, use only parts provided with this fan. **The use of parts OTHER than those provided with this fan will void the warranty.**

WARNING: This fan **MUST** be installed with the safety cable provided with the fan. Failure to use the safety cable provided may result in personal injury, damage to the fan or damage to other property.

CAUTION: Do NOT tamper with or attempt to repair LED component of fixture. The light source is designed for this specific application and should not be serviced by untrained personnel. If any servicing is required, call our customer service department.

NOTE: This equipment has been tested and found to comply with the limits for a Class B digital device, pursuant to Part 15 of the FCC Rules. These limits are designed to provide reasonable protection against harmful interference in a residential installation. This equipment generates, uses and can radiate radio frequency energy and, if not installed and used in accordance with the instructions, may cause harmful interference to radio communications. However, there is no guarantee that interference will not occur in a particular installation. If this equipment does cause harmful interference to radio or television reception, which can be determined by turning the equipment off and on, the user is encouraged to try to correct the interference by one or more of the following measures:

- * Reorient or relocate the receiving antenna.
- * Increase the separation between the equipment and receiver.
- * Connect the equipment into an outlet on a circuit different from that to which the receiver is connected.

Consult the dealer or an experienced radio/TV technician for help.

The LED light kit complies with Part 15 of the FCC Rules. Operation is subject to the following two conditions: (1) this LED light kit may not cause harmful interference, (2) this LED light kit must accept any interference received, including interference that may cause undesired operation.

NOTE : The important safety precautions and instructions appearing in the manual are not meant to cover all possible conditions and situations that may occur. It must be understood that common sense and caution are necessary factors in the installation and operation of this fan.

Parts Inventory.



① Motor

④ Down Canopy

⑦ Lampshade

⑩ Blades

② Hanging Bracket

⑤ Upper Canopy

⑧ Remote Control

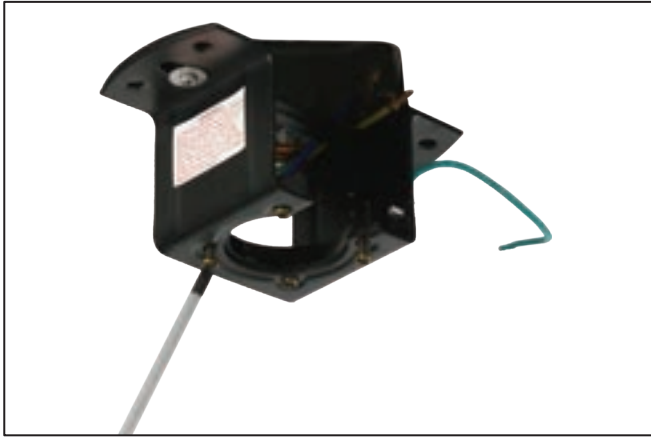
⑪ Blade holder

③ Down Rod

⑥ Light Kit

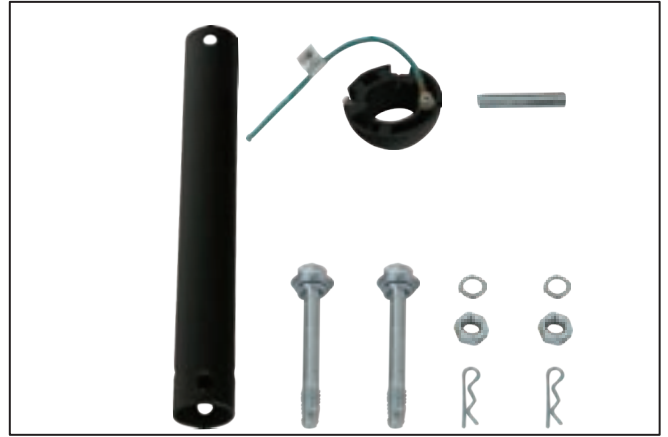
⑨ Screws Pack

Fan Assembly.



Step 1

Use the hanging bracket to fix in the octagon box.
And loosen two opposite screws under the bracket.



Step 2

Pull out the R-pin from the rod.



Step 3

Through the upper canopy and down canopy with the rod.



Step 4

Loosen the 2 screws of the coupler.



Step 5

The wires through into the hole of the rod, and insert the rod into the coupler.

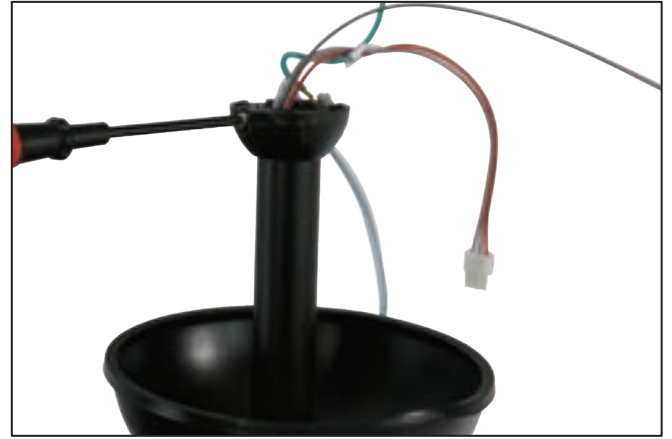


Step 6

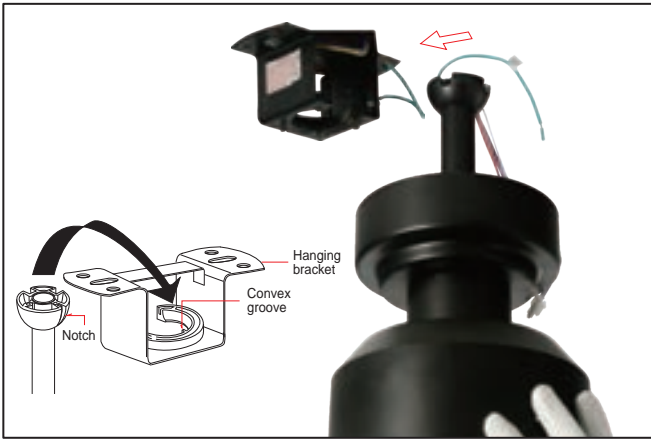
Tighten the 2 screws of the coupler.



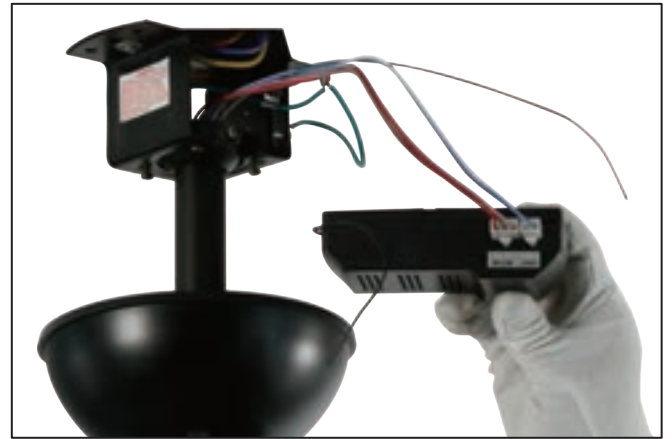
Step 7
Fix the motor to the hanging bracket.



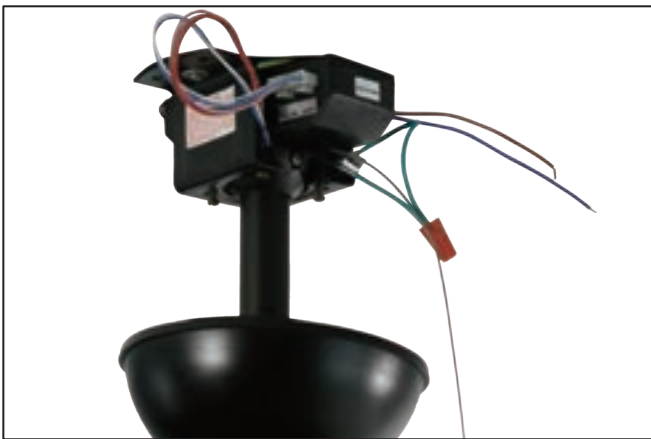
Step 8
Connect the motor to the remote control receiver.



Step 9
Fix the motor to the hanging bracket.



Step 10
Connect the motor to the remote control receiver.



Step 11
Place the receiver on the bracket and connect home wires.
Black for Live wire, White for neutral wire, Green for ground wire.



Step 12
Rotate the upper canopy and tighten the screws.



Step 13

Remove the fixing screws of the fan blades.



Step 14

Screw the holes tightly with screws and gaskets.



Step 15

Screw and tighten the blades on the motor with Blade holder.



Step 16

Remove the fixing screws of the light kit.



Step 17

Align the holes between the motor and the light kit, then screw them down with screws. Connect the light kit power cord to the light kit receiver.



Step 18

Align the cover with the light kit and then rotate it .

Trouble shooting Guide

If you have difficulty operating your new ceiling fan, it may be the result of incorrect assembly, installation or wiring. If you experience any faults, please check this Trouble shooting Guide.

PROBLEM	SUGGESTED REMEDY
If fan does not start:	<ol style="list-style-type: none"> 1. Check main and branch circuit fuses or circuit breakers. 2. Make sure forward/reverse switch is firmly in bottom or top position. Fan will not operate when switch is in the middle. 3. Make sure that the wall control is turned "ON". 4. Check line wire connections to fan and switch wire connections in switch housing. <p>CAUTION: Make sure main power is turned off.</p>
If fan sounds noisy:	<ol style="list-style-type: none"> 1. Make sure all screws in motor housing are snug.(not over tightened) 2. Make sure the screws which attach the fan blade bracket to the motor are tight. 3. Make sure wire connectors in switch housing are not rattling against each other or against the interior wall of the switch housing. <p>CAUTION: Make sure main power is turned off before accessing switch housing.</p> <ol style="list-style-type: none"> 4. If using an optional ceiling fan light kit, make sure the screws securing the glassware are finger tight.Make sure light bulb is tight in socket and not touching glass shade(s).If vibration persists from glass, remove glass and install a 1/4 in.wide rubber band on glass neck to act as an insulator.Replace glass and tighten screws against rubber band. 5. Some fan motors are sensitive to signals from Solid State variable speed controls.DO NOT USE a Solid State variable speed control. 6. Allow "break-in" period of 24 hours.Most noises associated with a new fan will disappear after this period.
If fan wobbles:	<ol style="list-style-type: none"> 1. Check that all blades are screwed firmly into blade brackets. 2. Check that all blade brackets are tightened securely to motor. 3. Make sure that canopy and hanger bracket are tightened securely to ceiling junction box and junction box is mounted firmly to ceiling joist. 4. Most wobble problems of fan are caused when blades are not in equal level. To check the blade levels, select a point on the ceiling above the tip of any blade.Measure the distance from the ceiling to the blade tip, to an accuracy of 1/8 inch. Rotate the blades until the next blade is in the measuring position. Repeat measurement for each blade. If all blade levels are not equal, you can adjust blade levels by the following procedure. To adjust a blade tip down, insert a washer (not supplied) between the blade and blade bracket at the screw closest to the motor. To adjust a blade tip up, insert washer (not supplied) between the blade and blade bracket at the two screws farthest from the motor. 5. Interchanging two adjacent blades could redistribute the weight and possibly result in smoother operation.
If light does not work:	<ol style="list-style-type: none"> 1. Check the blue wire of the fan to make sure it is connected to the blue wire of the receiver. 2. Check for loose or disconnected wires in fan switch housing. 3. Check for loose or disconnected wires in light kit. 4. Check for faulty light. <p>CAUTION: Make sure main circuit is turned off before entering switch housing.</p>

WARRANTY CARD

Product Information	Model	
Machine Information	Selling Unit	Xinfeng Star Electronics Co., Ltd.
	Customer Service Email	info@finxin.com.cn
	Purchase Date	
User Information	User Email	
	Contact No.	

For detailed information, please refer to the following warranty terms. SN:

Warranty terms
<p>The ceiling fan of this company strictly abides by relevant regulations of household appliances warranty, and we are devoting ourselves to providing satisfactory after-sale services for distinguished customers.</p> <p>The warranty term of fan motor is ten years, while the warranty term of other parts is one year. When any quality related issue arises out of the fan, customers need to fill in the [Warranty Card] and take a picture to be sent to the customer service email info@finxin.com.cn. Customer service staffs will timely follow up for handling.</p> <p>Warranty service is only limited to quality issue(s) under normal use. Any and all damages due to abnormal use, such as the installation and use without following the manual, exceeding the normal voltage ($\cong 110V\pm 10$), repair and modification without permission from this company, and water entering the fan, are out of the warranty scope, and the responsibility should be taken by the users.</p> <p>The warranty term starts to count upon confirmation of goods reception by customers. Warranty voucher is a guarantee for consumers to enjoy the right of warranty, so please keep it properly. The warranty voucher should be filled in with seriousness; please do not alter, or otherwise it is invalid.</p>

FINXIN PRODUCT INSPECTION STANDARD INSTRUCTION

Date:

Order No:

Model:

Quantity:

First and END S/N of this Batch:

We hereby certify that this batch of FINXIN product have been manufactured in conformance with drawings, specifications, requirements and standard class. And we have done the In-circuit Test, Function Test, for all the accessories 100% retest for Function Test and they have all passed.

We hereby confirm that FINXIN have done 100% final inspection before the delivery and don't have problem.

Inspector:

Qualified Seal: