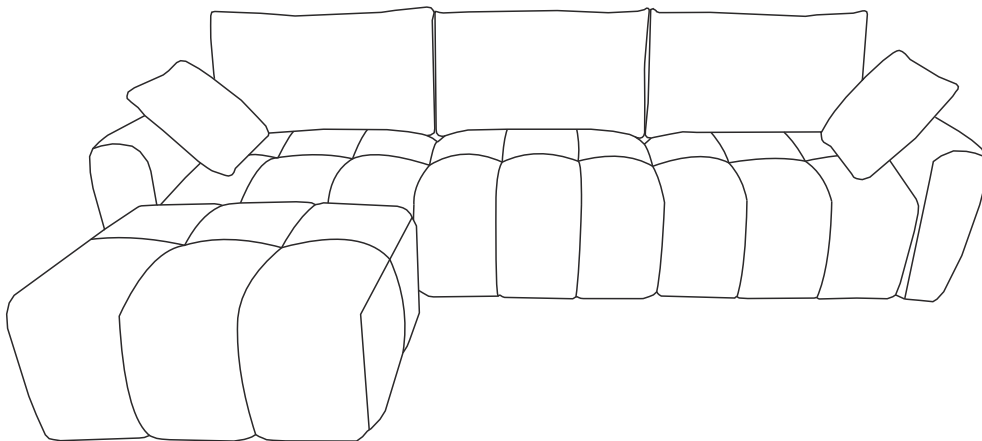


ASSEMBLY INSTRUCTION



Sets often ship in multiple boxes and delivery date may vary.

CUSTOMER SERVICE

Questions, Missing parts, Assembly help?

No need to return the product, we will gladly help and ship your replacement parts free of charge.

PRE-ASSEMBLY INFORMATION

Please read this manual carefully before beginning assembly of this product. Keep this manual for future reference.

NOTICE

1. Please assemble it AFTER all boxes are received.
2. Please do not throw away any of the packages or the instruction until the sofa is fully assembled.
3. Please keep children away from the plastic bags or any small pieces of stuff.
4. Some key parts of our product may be stored and hidden inside of other parts. Please open any zippered or hook & loop storage compartments to take out all parts.
5. Please do not open the compressed packages until your sofa frame is completely assembled.
6. As the cushions are all vacuum compressed, there will be some wrinkles. Please give them up to 72 hours to reach its original size and the wrinkles will basically disappear.
7. DO NOT INSTALL THE SCREWS ALL THE WAY IN THE BEGINNING. Place each screw into their proper hole and use your hand to twist the screw halfway. Twist all the screws in halfway to ensure the holes will match up properly and the product is level on the ground. When everything seems fitted, then tighten the screws.
8. Do not over tighten screws and bolts to avoid stripping.



2 adults recommended

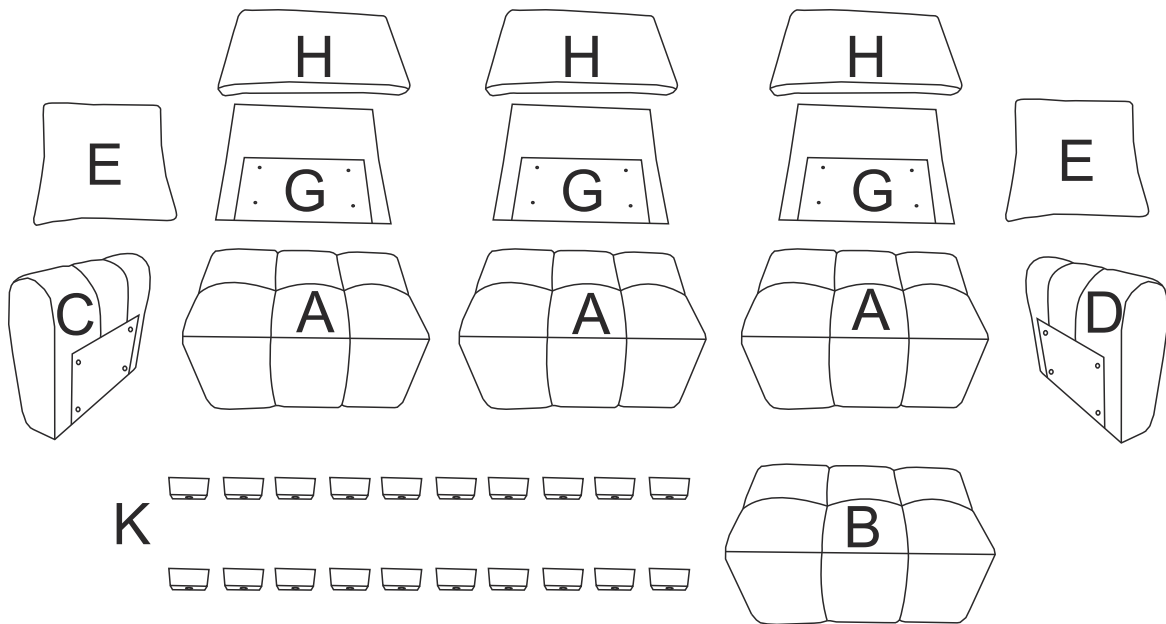








Takes about 1.5 Hours to assemble



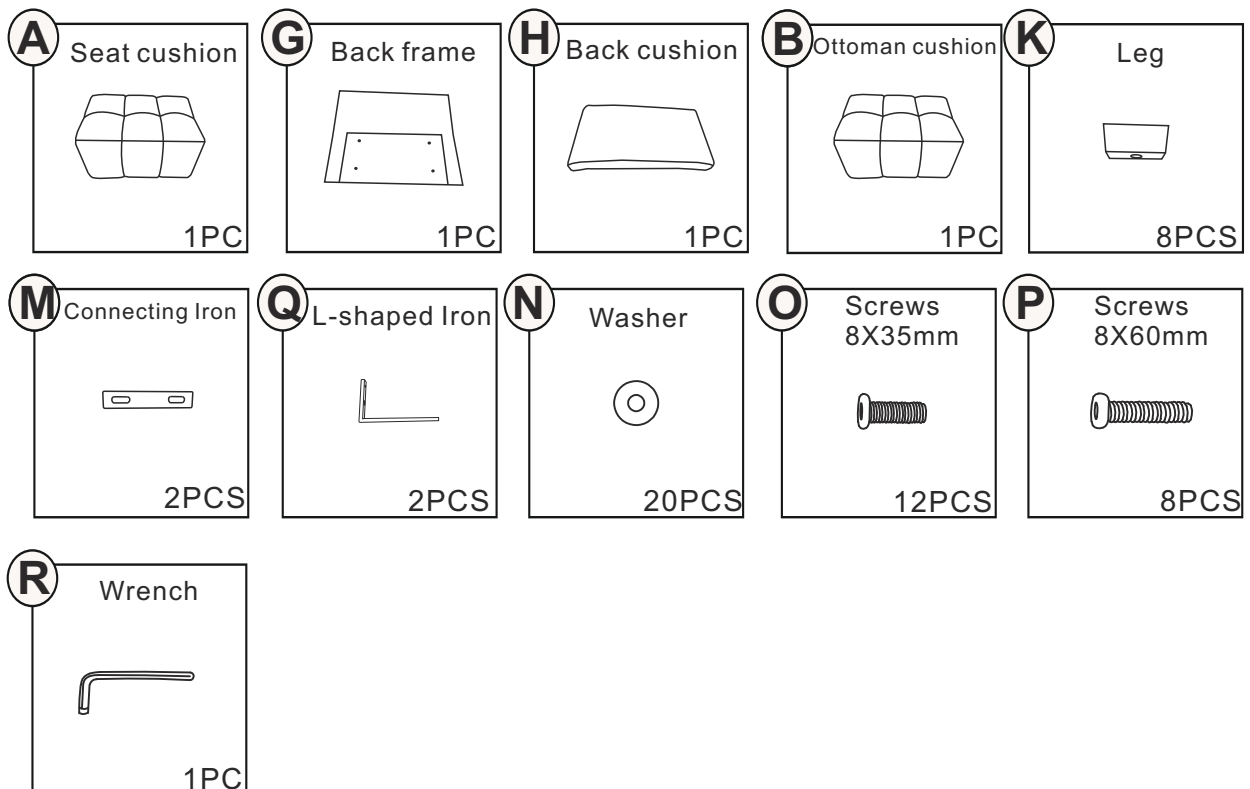
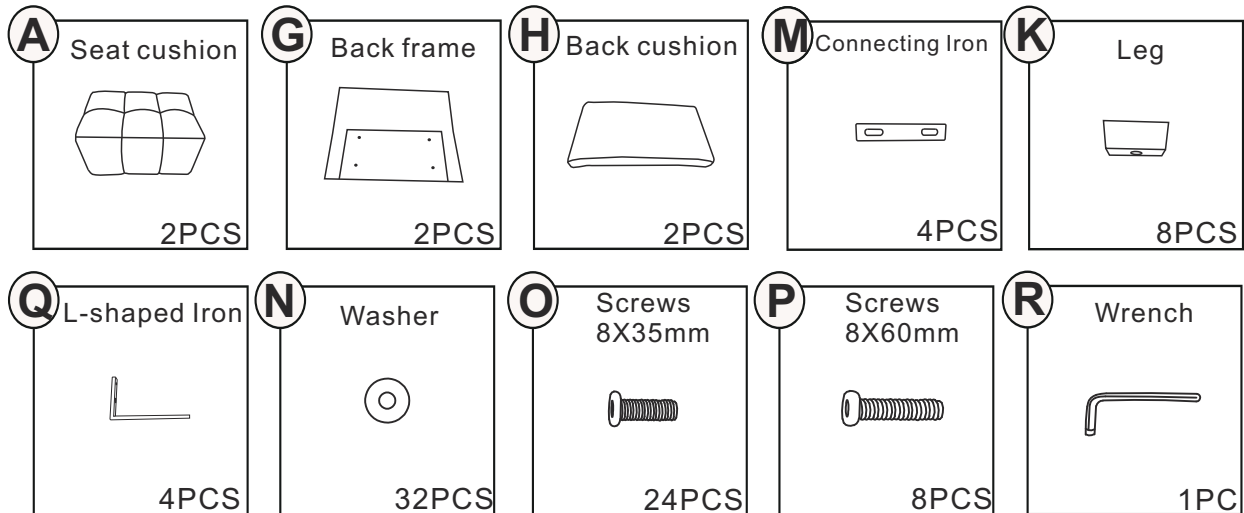
Weight capacity of each seat: 330LBS

COMPONENTS

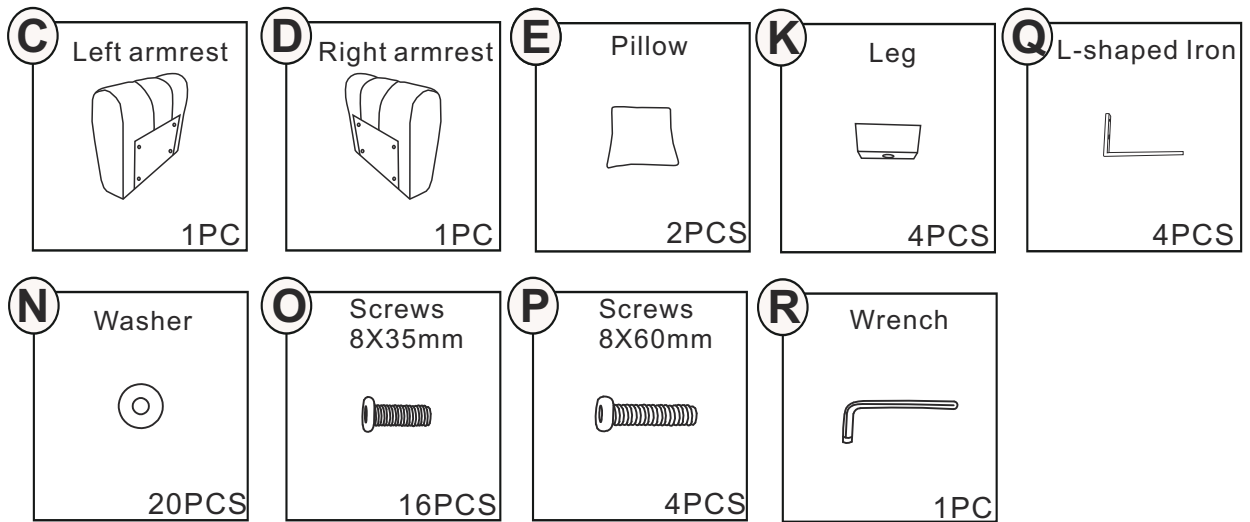


HARDWARE			
NO	DESCRIPTION	SKETCH	QTY
N	Washer		72
O	Screws 8X35		52
P	Screws 8X60		20
M	Connecting Iron		6
Q	L-shaped Iron		10
R	Wrench		3

COMPONENTS

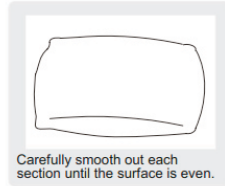
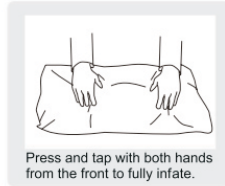


COMPONENTS



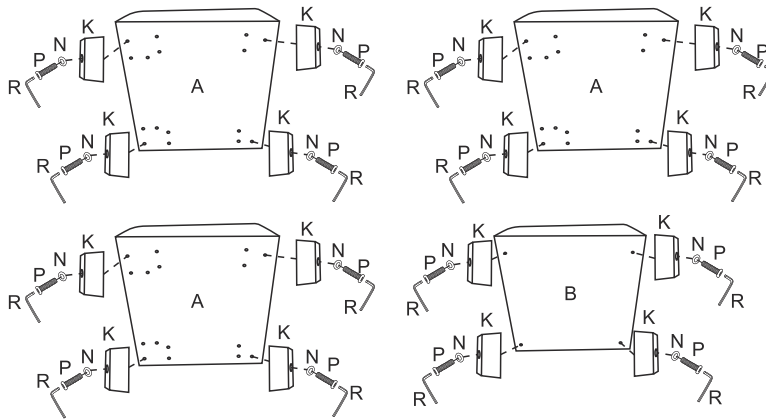
ASSEMBLY STEPS

STEP 1 Open the vacuum bag and take the cushion(A/B/E/H)out. To restore the original shape, follow the steps bellow.

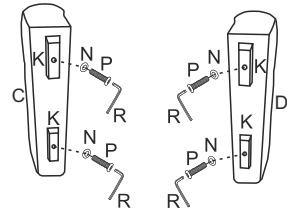


After packing up, place them in somewhere dry and venslated. After about 72-96 hours. It can be restored to the best use condition.

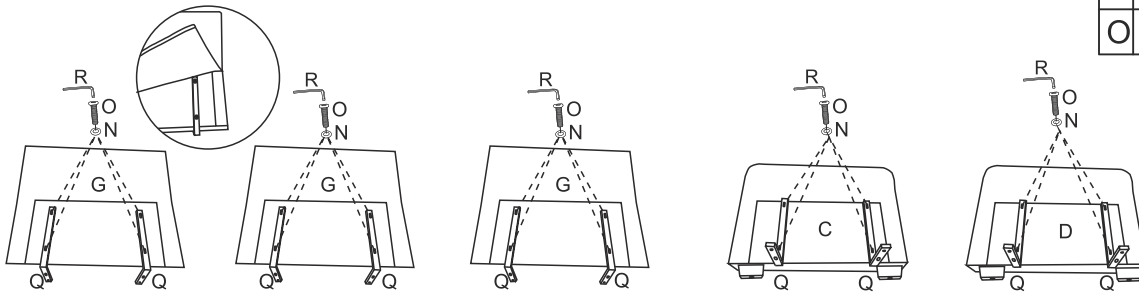
STEP 2 Assemble the Legs (K) on the sofa with Washers (N) and Screws (P).



N		20PCS
P		20PCS

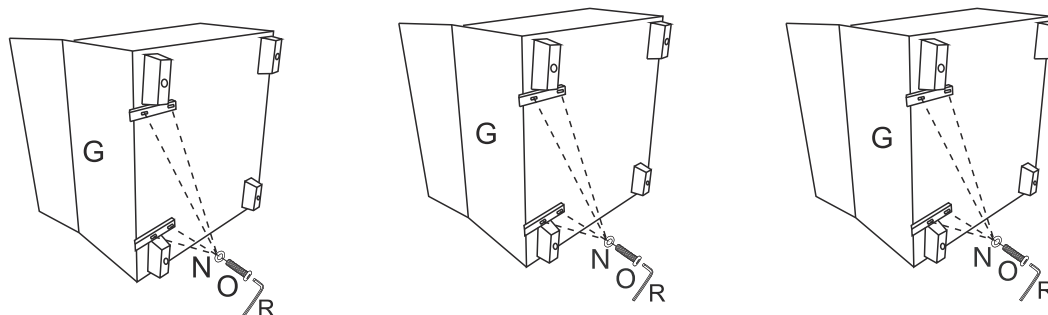


STEP 3 Install L-shaped irons (Q) on the Armrests (C/D) and Backrests (G).





N		20PCS
O		20PCS

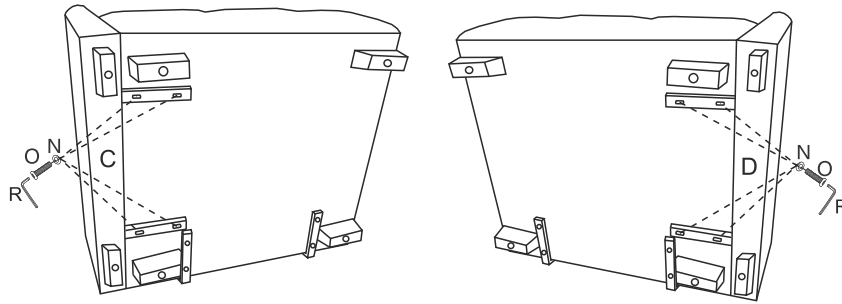
STEP 4 Assemble Backrests (G) with Washers (N) and Screws (O).






N		12PCS
O		12PCS

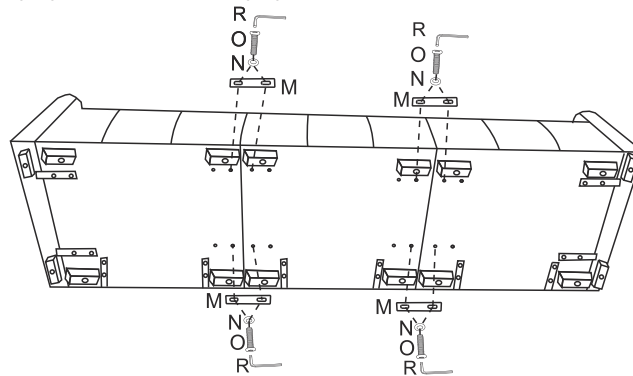
STEP 5 Assemble Left armrests (C) and Right armrests (D) with Washers (N) and Screws (O).

N		8PCS
O		8PCS

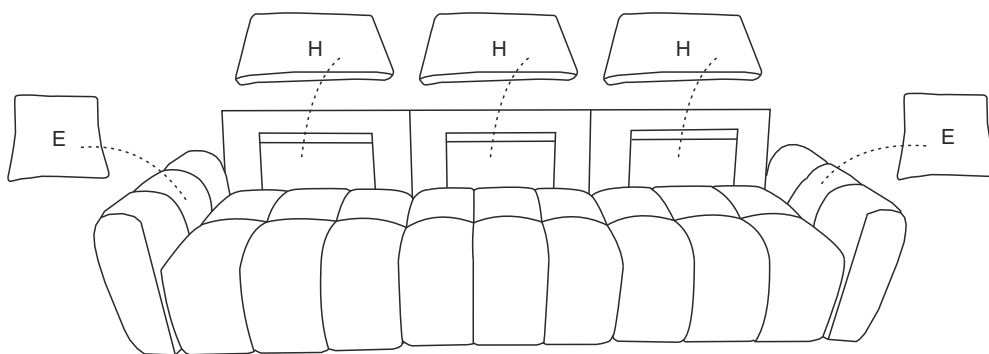


STEP 6 Assemble Seat frames (A) with Connecting irons (M) and Washers (O) and Screws (N).

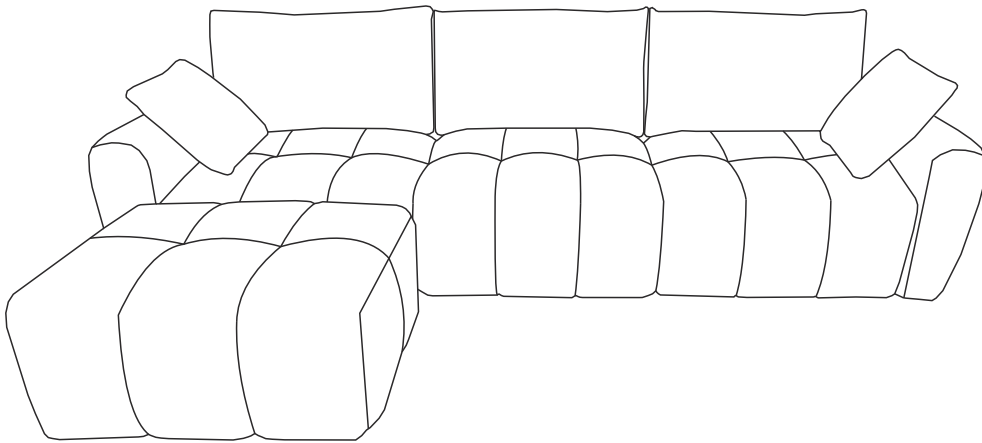
M		4PCS
N		8PCS
O		8PCS



STEP 7 Place the cushions on the sofa.



STEP 8 Complete



Note: After assembly, please wait at least 72 hours before sitting.