

KOHLER® 68" FREESTANDING BATH WITH BASK™ HEATED SURFACE

ARCHER®

K-2594-W1

Features

- Slotted overflow for maximum bathing depth
- Integral lumbar support
- Molded armrests for extra comfort
- Bask™ Heated Surface provides soothing warmth on your back and neck
- Three heat settings allow you to customize the surface temperature
- Two-piece design
- Textured Bottom Surface
- 67-3/4" (1568 mm) x 31-3/4" (806 mm) x 22" (559 mm)
- End Drain Placement
- Requires 120V electrical service

Material

- Exocrylic™

Installation

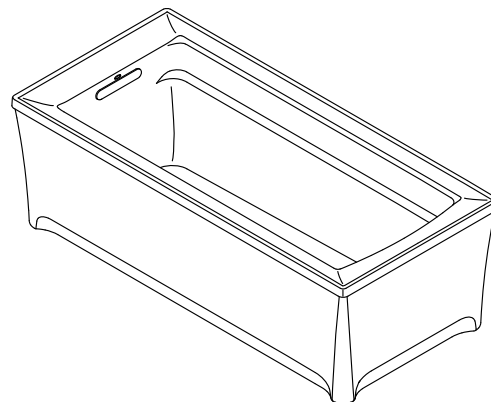
- Freestanding Bath
- Requires K-7271 or K-7272 Clearflo slotted overflow bath drain (sold separately).

Required Accessories

K-7271 Slotted Overflow Bath Drain

or

K-7272 Slotted Overflow Bath Drain



Codes/Standards

CSA B45.5/IAPMO Z124

UL 1795






CSA C22.2 No. 218.2

CARB P2

See website for detailed warranty information.

Available Color/Finishes

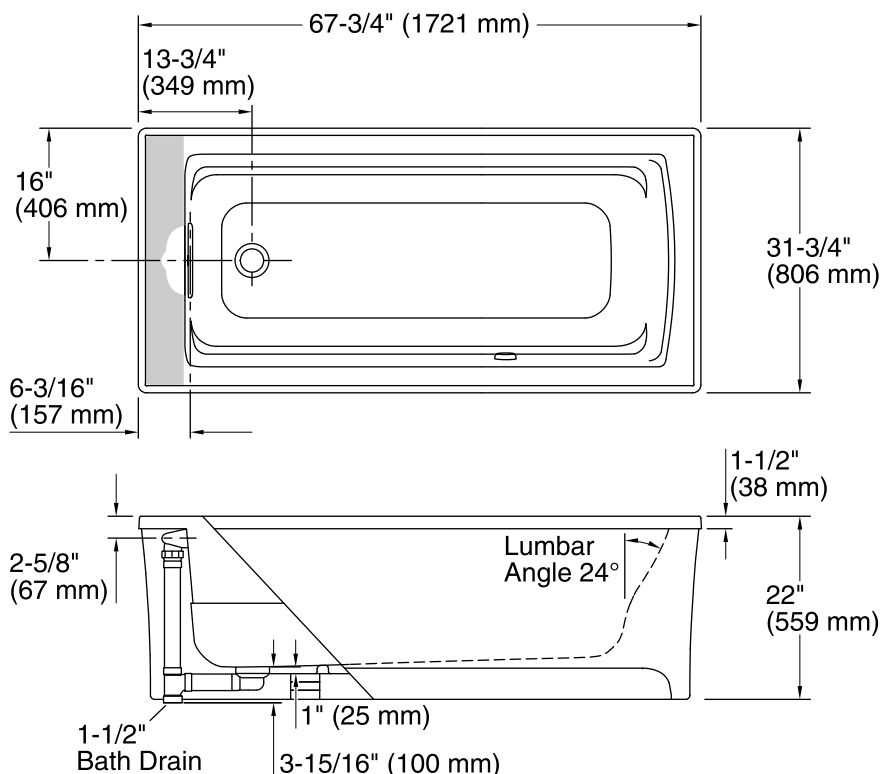
Color tiles intended for reference only.

Color	Code	Description
	0	White
	96	Biscuit
	47	Almond
	NY	Dune
	G9	Sandbar

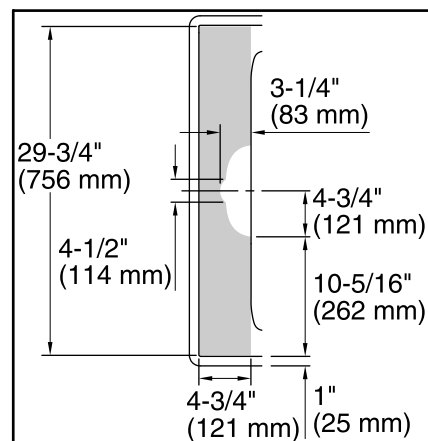
KOHLER® 68" FREESTANDING BATH WITH BASK™ HEATED SURFACE

K-2594-W1

Recommended faucet area.



No change in measurements if connected with drain illustrated. (K-7272)



Recommended Faucet Area Detail

Required Electrical Service

One dedicated circuit required, protected with Class A Ground-Fault Circuit-Interrupter (GFCI) or Residual Current Device (RCD).

Heated Surface: 120 V, 15 A, 50/60 Hz

Technical Information

All product dimensions are nominal.

Installation:	Freestanding
Drain location:	Reversible
Basin area, bottom:	51-1/16" x 19-11/16" (1297 mm x 500 mm)
Basin area, top:	58-9/16" x 25-5/16" (1487 mm x 643 mm)
Weight:	95 lbs (43.1 kg)
Minimum floor load:	43.8 lbs/ft ² (213.9 kg/m ²)
Water depth:	15-1/16" (383 mm)
Water capacity:	65 gal (246.1 L)
Electrical rating:	Heated Surface: 120 V, 1.1 A, 60 Hz, 65 W
Pump speed:	3-speed

Notes

Measure your actual product for roughing-in details.

Install this product in accordance with the installation instructions.

Locate a GFCI-protected 120 V, 15 A, grounded electrical outlet within 24" (610 mm) of the bath junction box. A 40" (1016 mm) cable is included.

This bath is designed for freestanding installation only.

NOTICE: Do not support the load weight of the bath by the rim.

NOTICE: Confirm adequate support for rim-mount faucet. Using faucets as a means of support are not appropriate or safe for this installation.

The hot water supply should be 70% of the capacity of the bath or greater. Installations will vary.