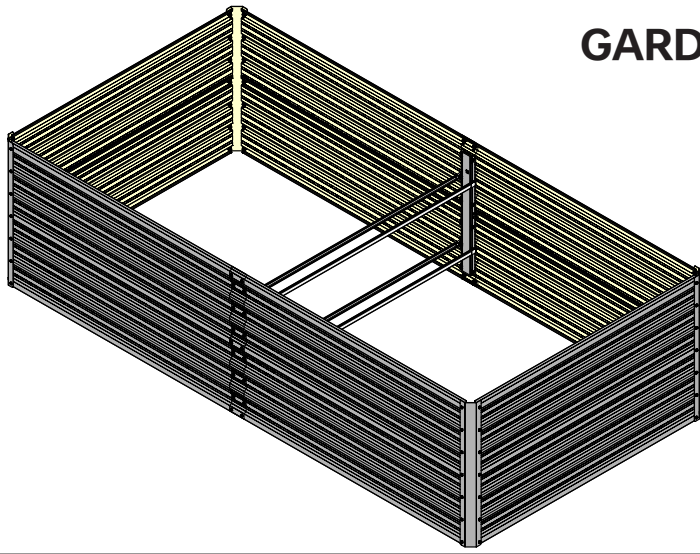


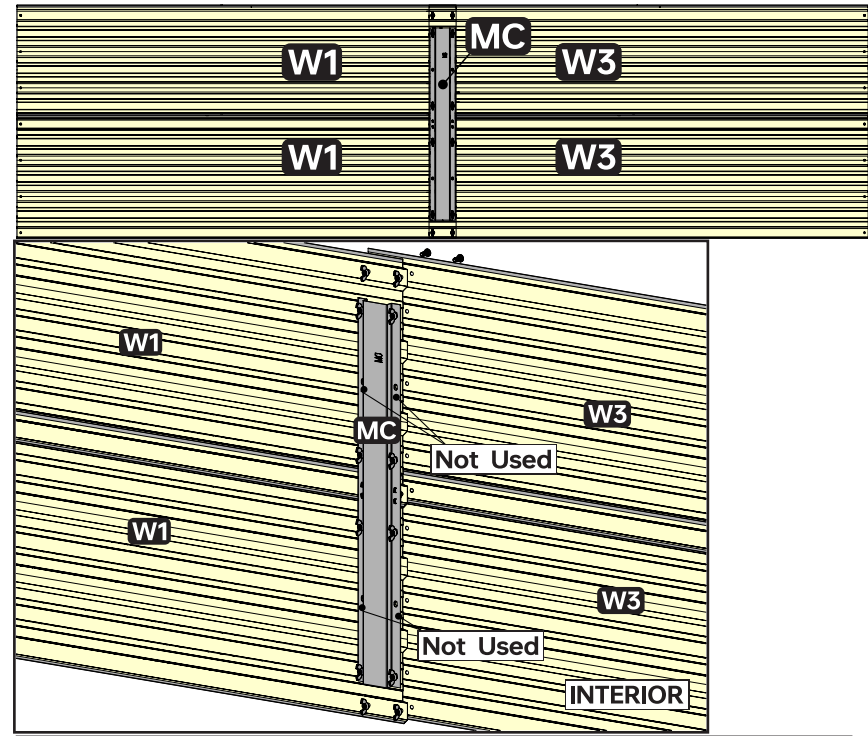
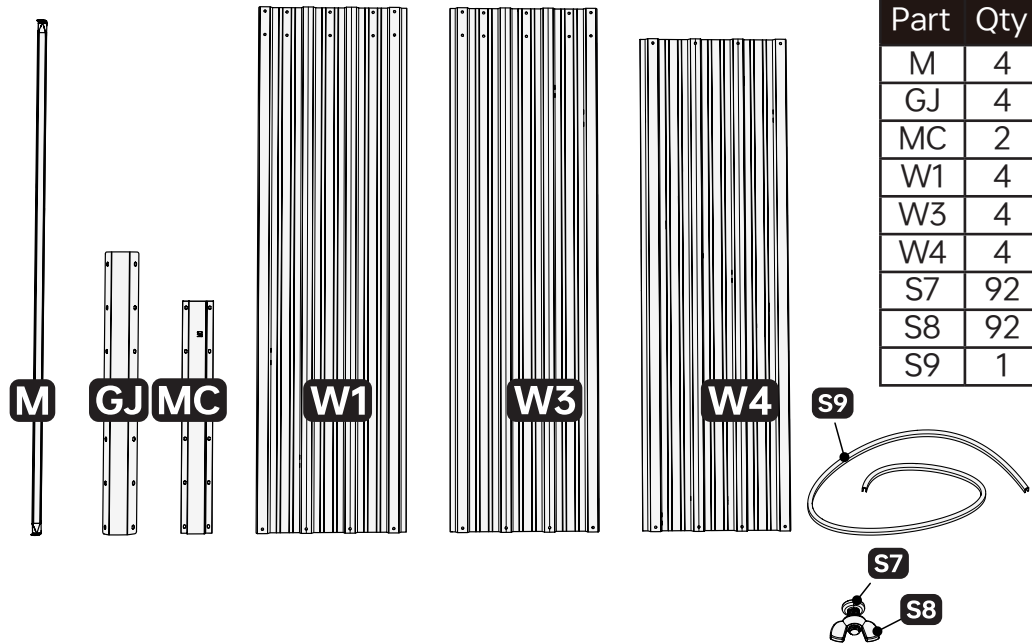
GARDEN BED GB06 ASSEMBLY GUIDE



SAFETY GUIDE

The metal sheets in this kit have sharp edges and corners. Handle them with extreme care to avoid cuts and abrasions. Wear sturdy work gloves to protect your hands from sharp edges and to ensure a good grip on the materials.

PARAT LIST



1	
Part	Qty
MC	2
S7	28
S8	28
W1	4
W3	4

Top

NOTE

Each panel of your garden bed comes with two distinct sides and two ends:

Interior Side: This side is always light gray.

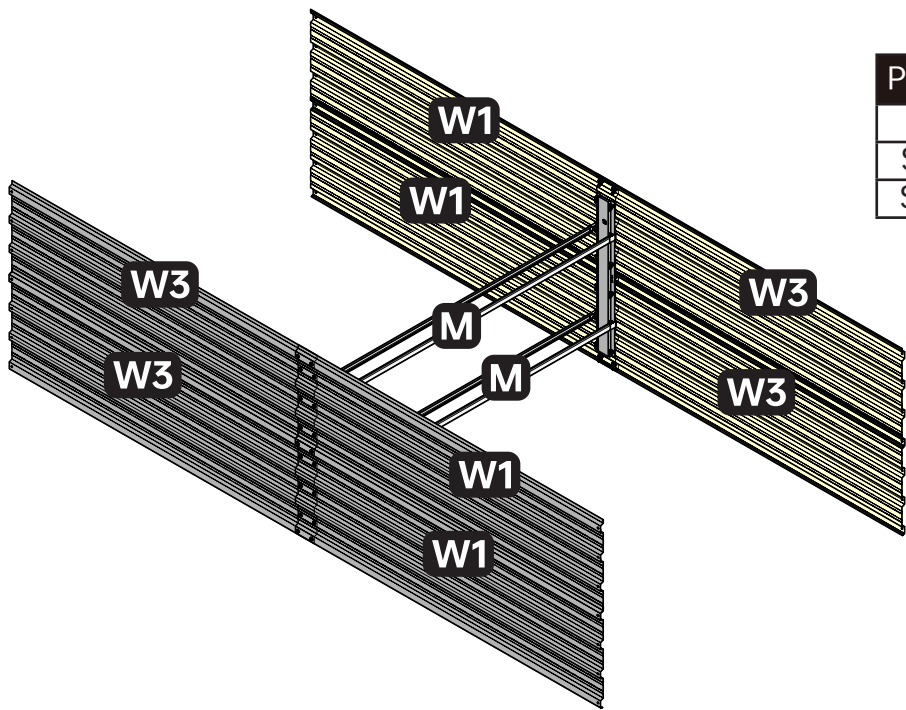
Exterior Side: This is the side that showcases the color you selected for your garden bed, facing outward. Peel off the thin protective film from the exterior side of each panel before use.

When stacking panels vertically, it is important to note that each panel has a distinct **top and bottom end**. Please refer to the illustration provided to ensure correct panel orientation during assembly.

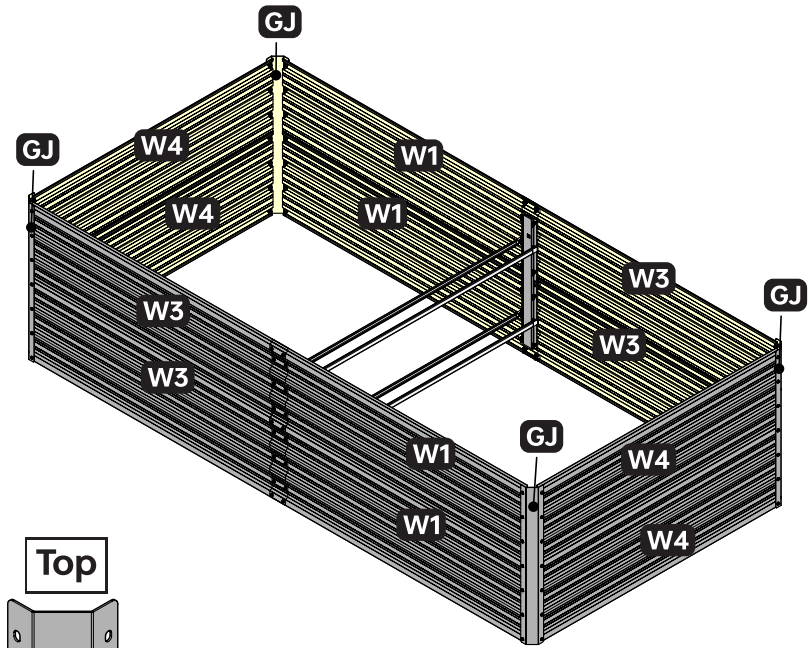
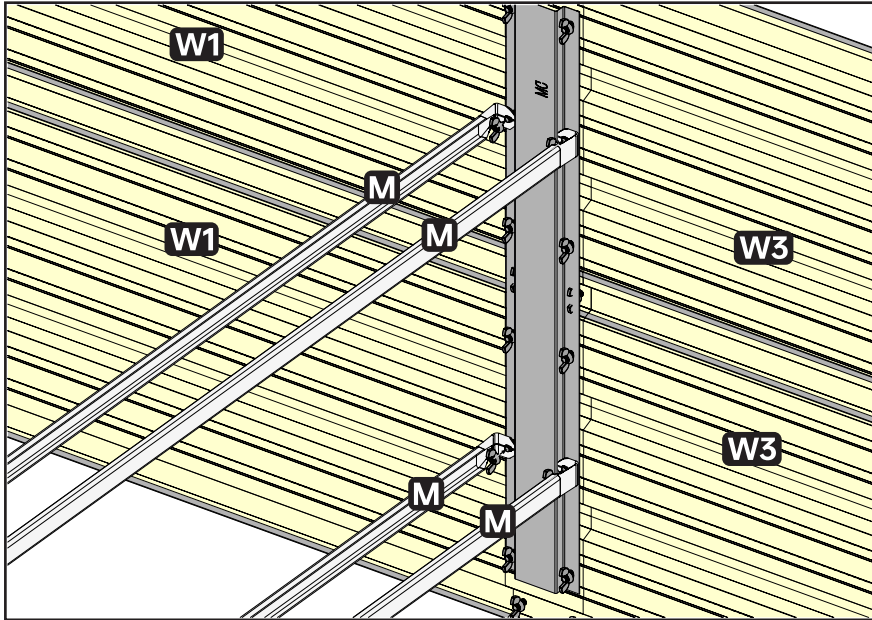
Attach part MC to the interior side of the garden bed using 8 of the 12 screw holes. Do not use the two middle screw holes at this time.

Repeat this process to create two sets of 2W1 + 2W3 + MC structures.

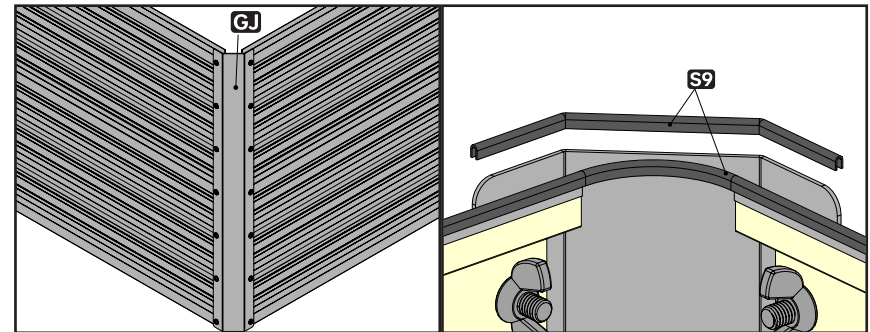
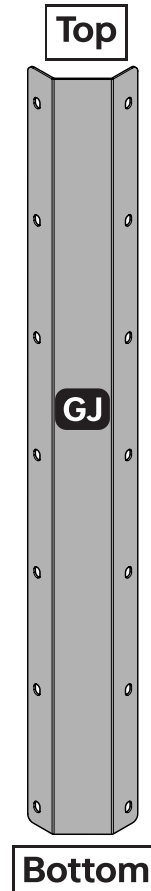
Bottom



2	
Part	Qty
M	4
S7	8
S8	8



3	
Part	Qty
GJ	4
S7	56
S8	56
S9	1
W4	4



NOTE
 Part GJ also has a defined top and bottom end. The end where the oval screw holes are closer to the edge is considered the bottom end. Conversely, the opposite end is the top end. Ensure panels are connected at the same ends.
 Use the S9 seal strip to seal the edges of the four GJ corner parts (cut four 10 cm/4inches pieces) and then wrap the remaining strip around the top edge of the garden bed.