


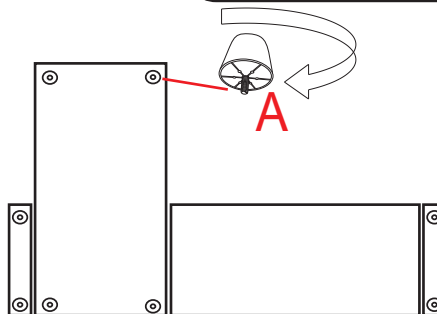
ASSEMBLY INSTRUCTION

HARDWEAR LIST

NO.	DESCRIPTION	QTY (pcs)
A	 leg	8
B		4

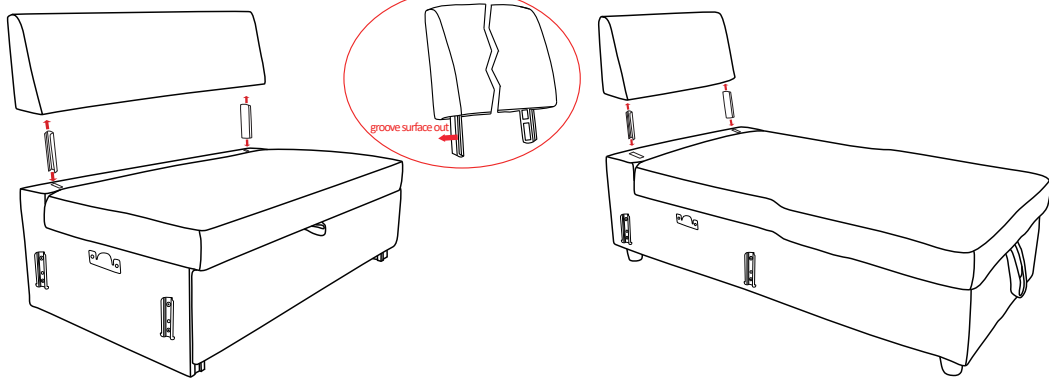
STEP1

ATTENTION:
LEGS LOCATION:
Please check zipper
compartment underneath the seat area.

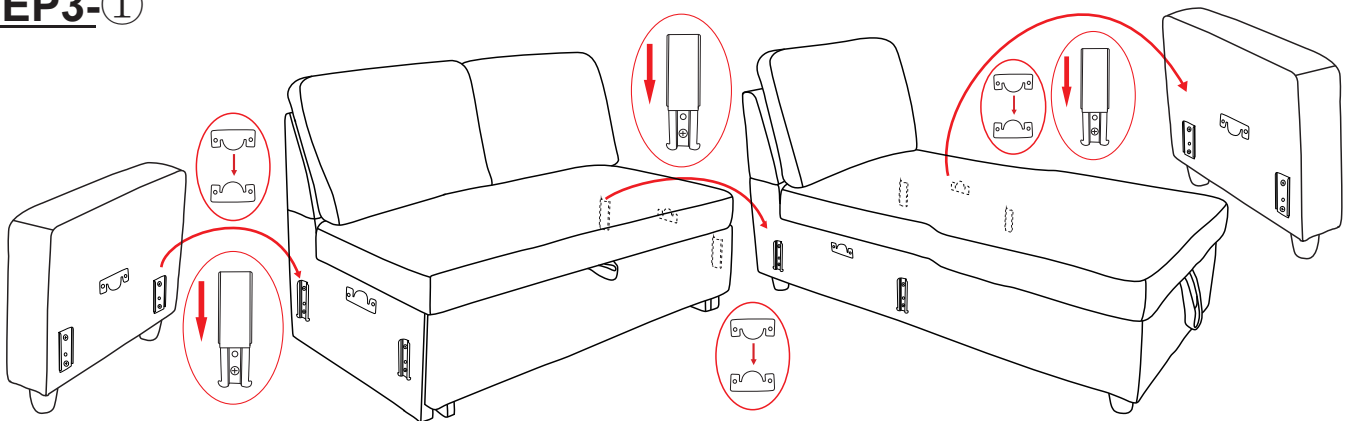


STEP2

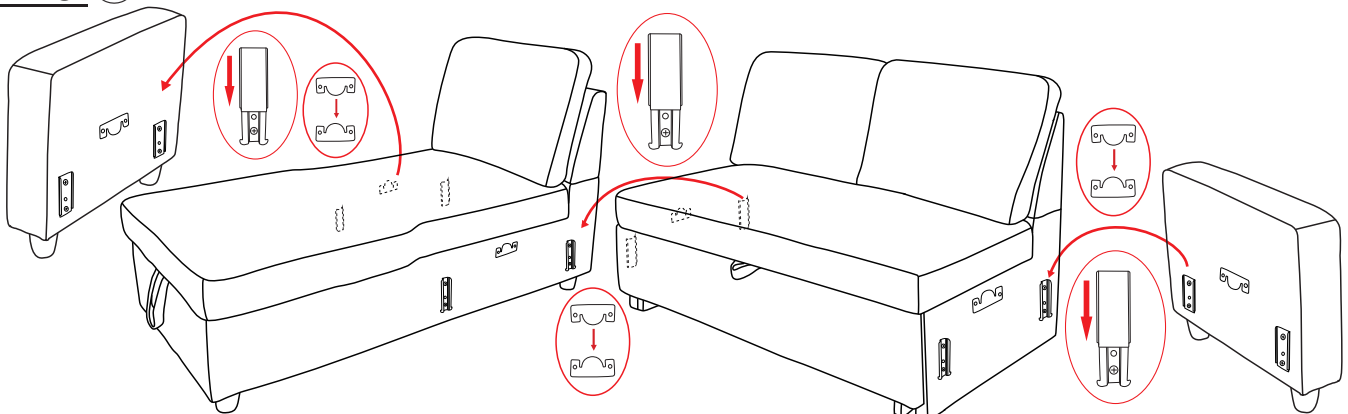
B



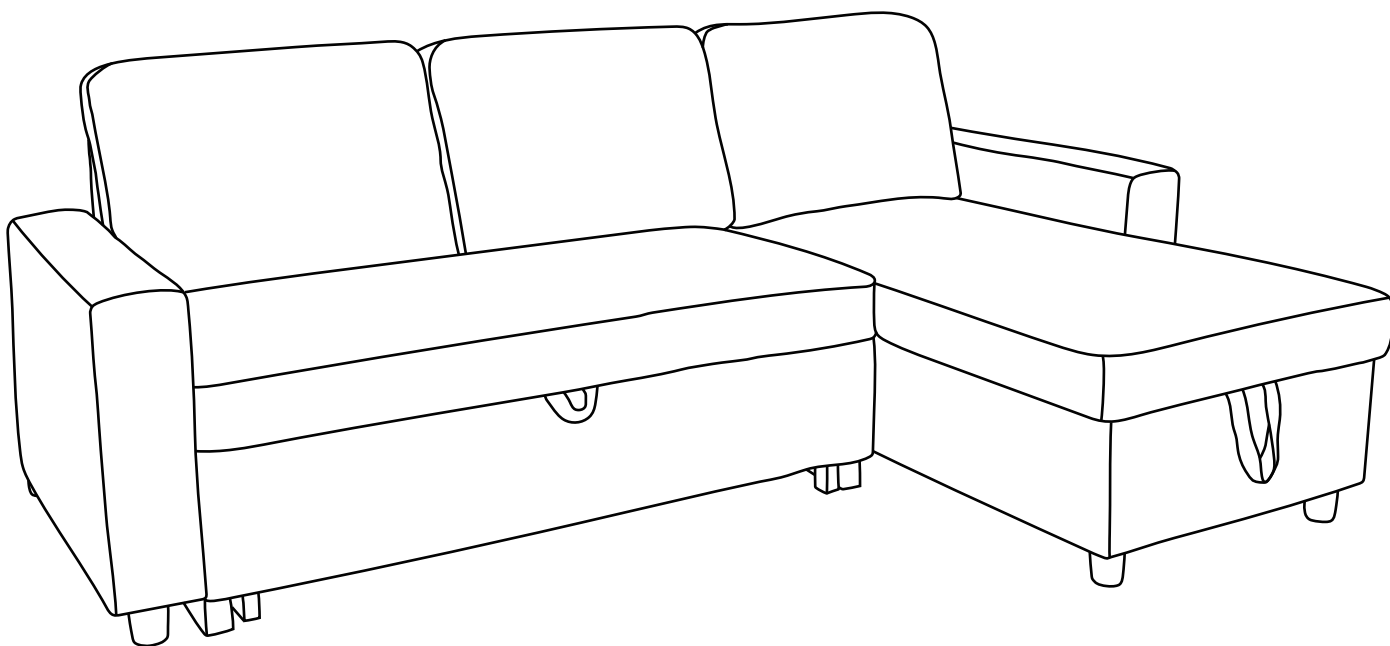
STEP3-①



STEP3-②



STEP4-①



STEP4-②

